

M82

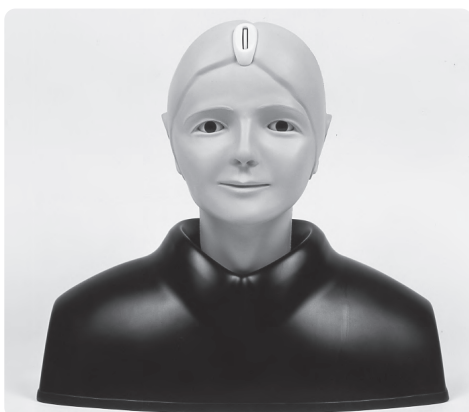
"EYE" Examination Simulator (3 steps)

⚠ Caution | Do not mark on the model and other components with pen nor leave printed materials contacted on surface.
Ink marks on the models cannot be removed.

Instruction Manual



"EYE" Examination Simulator Dark tone



"EYE" Examination Simulator Light tone
眼底診察シミュレータ

Movie Site



English Site

<https://youtu.be/t9i2caulgpl>

動画サイト



日本語サイト

https://youtu.be/haBoLsk_NZQ

⚠ Caution | Do not mark on the model and other components with pen nor leave printed materials contacted on surface.
Ink marks on the models cannot be removed.



Table of Contents

- Introduction
 - Manufacturer’s Note P. 1
- Before You Start
 - DOs and DON’Ts P. 2
 - Set Includes P. 3
- Before You Start
 - Preparation P.4-P. 5
- After Training P. 5

Manufacturer's Note

Please read the instruction carefully before use.

● Before Use

"EYE" Examination simulator is designed to help you practice examination of the optic fundus with an ophthalmoscope. So please do not use this model for any purpose other than medical practice and study, and please read the instructions carefully. We are not responsible for any damage caused by use that is not accepted by this instruction.

- Do not touch the fundus images. Fingerprints on the surface cannot be removed.
- Always handle the product carefully.

● Product Features

- You can examine the optic fundus with any ophthalmoscope available on the market. Provides you with the simulation of an actual examination. (Without correct operation of direct ophthalmoscope, it is impossible to examine the fundus.)
- Lenses are used for a part of the eyeball, and reproduces the visual axis close to human.
- It is possible to change the degree of dilation and contraction of the pupil in 3 steps (2, 3.5, 5mm) offering different degrees of challenges.
- Three slits with different depth are prepared on the holder, to simulate hyperopia, normal and myopia respectively.
- In addition to the normal case, typical cases of eye diseases are provided.
- The soft and supple material allows simulations of a real examination, in ways such as pulling up the eyelid.
- Explanation for the cases is included.

Caution

- Please use direct ophthalmoscope with an anti reflection filter.
- On opening and closing the eyelid, please do as you would with an actual patient.
- The fundus images must be handled with the utmost care. Please take care that the images are not stained and damaged. On removing dust on the images, please use the blower included.
- When changing the diameter of the pupil, please turn the gear softly.
Please do not turn the gear with excessive force.

DOs and DON'Ts

DOs

Handle with Care

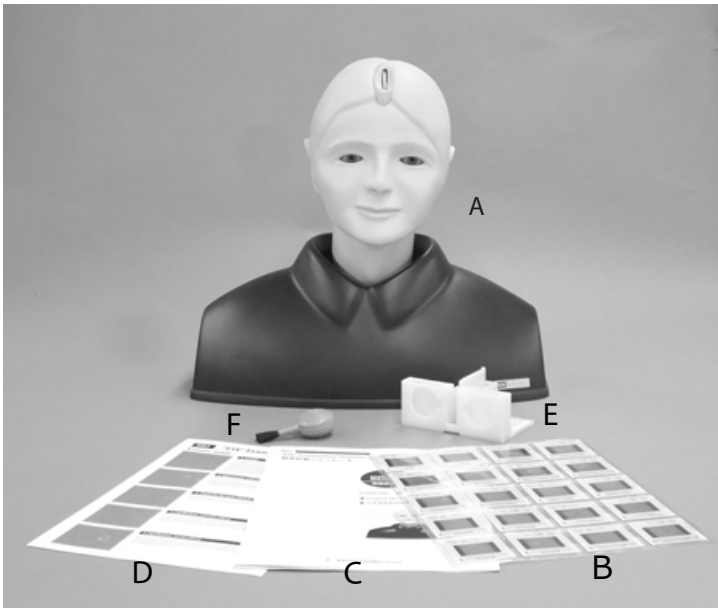
- The materials for the simulator are a special composition of soft resin. Please handle with the utmost care.
- Store the simulator in the case at room temperature. Keep away from heat, moisture, and direct sunlight.

DON'Ts

- Do not ever wipe the simulator with thinner or organic solvent.
- Do not mark on the simulator with pen or leave any printed materials in contact with the surface. Ink marks on the surface will not be removable.

Set Includes

Before your first use, ensure all components listed below are included in the unit.



Specifications

Manikin : Life size of an adult male head

Material : soft resin, hard resin

Weight : 2kg approx.

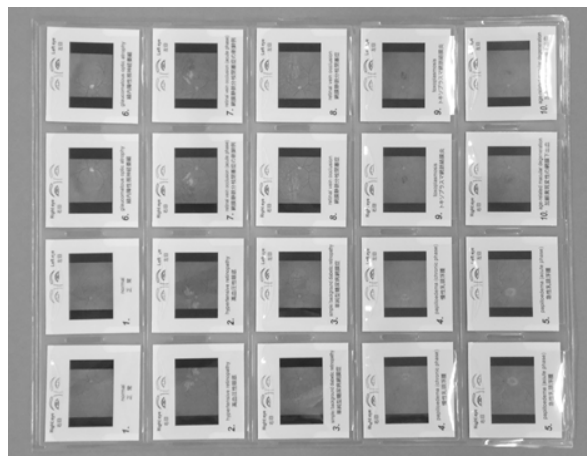
Dimensions : Manikin W42×D22×H38cm

Set includes

- A. Manikin head and shoulder 1
- B. Set of fundus images (10 cases) 1
- C. Manual 1
- D. Study guide 1
- E. Slide holder 1
- F. Blower 1
- G. Storage case 1

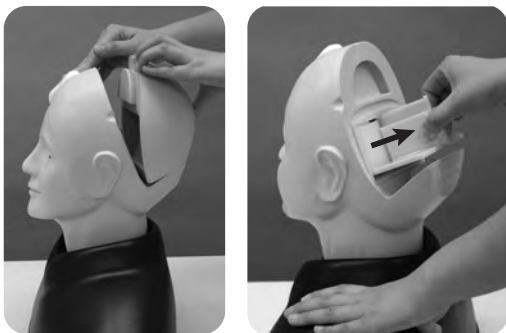
● Replacement Parts

11220-010 1 set of fundus images (10 cases, left and right for each)

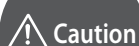


Preparation

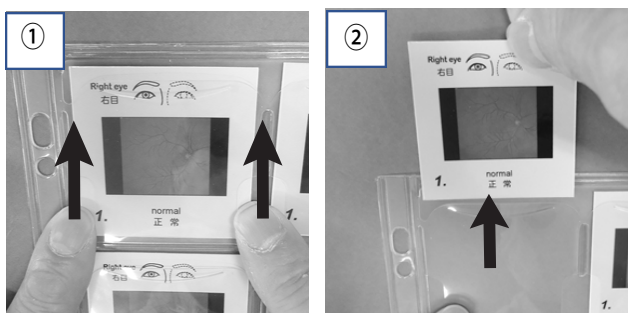
1. Setting of the slides



1. Remove the head cover on the back of the head.
2. Pull out the slide holder from the eyeball unit.
The slide holder is set with bearings on the inner wall of the eyeball unit. To pull it out, please grasp the center of the holder.



Caution Please do not remove the eyeball unit from the mannequin.



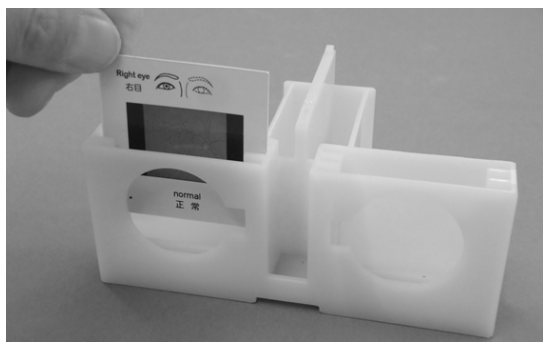
3. Prepare the fundus images

Be careful not to touch the surface of the fundus images when handling them.

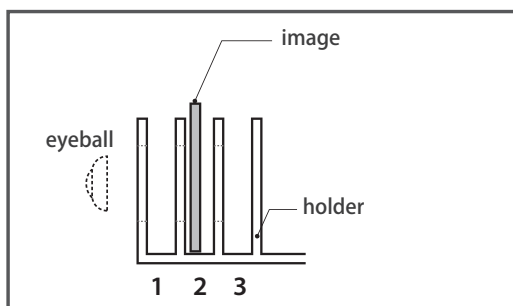
- 1) Push up the image card by pushing the lower corners of the pocket of the storage sheet.
- 2) Pull out the image card by holding its upper edge of the white frame.

4. Set the fundus images to the holder

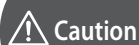
Insert the image card in the holder, taking note of the left/right mark on the top of each card. Be careful not to confuse the left and right.



Do not touch the area of fundus image on the card directly, as fingerprints deteriorate the image quality and they can be unremovable. When handling the image cards, always hold the area of the white frames. For removing the dust on their surface, use the included blower.



The first slit from the left is for simulating hyperopia (1) and the second slit is for simulating normal (2) and the third slit is for simulating myopia (3). (Please refer to the picture.) This simulation helps you study adjusting the strength of a lens of an ophthalmoscope. (Compartments for putting slides are provided on the holder. You can put 5 slides in each compartment.)

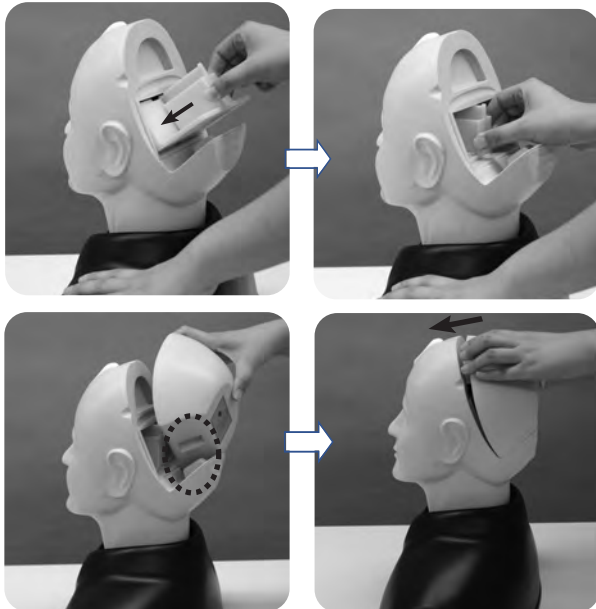


Caution The surface of the area of fundus images of the cards slide of the case image should never be touched directly as fingerprints will show up in all further examination.

On handling the slide, please hold its frame. On removing dust on the film, please use a blower included.

Before You Start & After Training

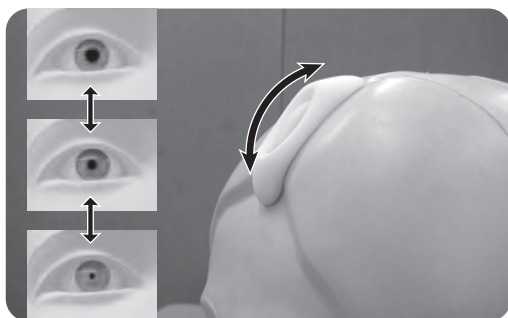
Preparation



4. As shown in the picture, incline the slide holder a little and insert it into the eyeball unit.

5. Set the head cover. First set the bottom part of it, then fit the upper part.

2. Changing the diameter of the pupil



1. It is possible to change the degree of dilation and contraction of the pupil in 3 steps (2, 3.5, 5mm). In order to dilate the pupil, please turn the gear to the top. In order to contract the pupil, please turn the gear to the bottom. The gear stops at three positions (top, middle and bottom).



.....
When turning the gear, please do it softly. Please do not turn the gear with strength and handle it roughly, because it may cause the breakage of the gears.



Now you are ready for a practice. Please use a direct ophthalmoscope.



.....
In case that the strong reflection disturbs the sight, use an anti-reflection filter with your scope and/or reduce its brightness.

After Training

3. After use:

For cleaning, wipe the surface of the mannequin with a soft cloth which has been moistened with water or alcohol. After drying, please dust the surface with baby powder.
Please do not put this model under high temperature or high humidity conditions.



Caution

Don't mark on the model and other components with pen or leave printed materials contacted on their surface.
Ink marks on the models will be irremovable.

For inquiries and service, please contact your distributor or KYOTO KAGAKU CO., LTD.

KYOTO KAGAKU co.,LTD

<http://www.kyotokagaku.com> e-mail: rw-kyoto@kyotokagaku.co.jp

■ Main Office and Factory

15 Kitanechoya-cho Fushimi-ku Kyoto 612-8388, Japan

Telephone : 81-75-605-2510

Facsimile : 81-75-605-2519

■ KyotoKagaku America Inc.

USA,Canada,and South America

3109 Lomita Boulevard, Torrance, CA 90505 ,USA

Telephone : 1-310-325-8860

Facsimile : 1 310 325 8867

The contents of the instruction manual are subject to change without prior notice.

No part of this instruction manual may be reproduced or transmitted in any form without permission from the manufacturer.

Please contact manufacturer for extra copies of this manual which may contain important updates and revisions.

Please contact manufacturer with any discrepancies in this manual or product feedback. Your cooperation is greatly appreciated.