



PROMPT FLEX RANGE

Multiple studies show positive outcomes through improved teamwork after a system wide commitment to enduring training.



Designed with, and used by leading worldwide Clinicians. The cost effective, modular nature of the **Birthing Simulator - PROMPT Flex** allows the training and practice of birthing, both normal and difficult, along with several maternal emergencies.

Used with Simulated patients, the key skill of communication can be practiced.

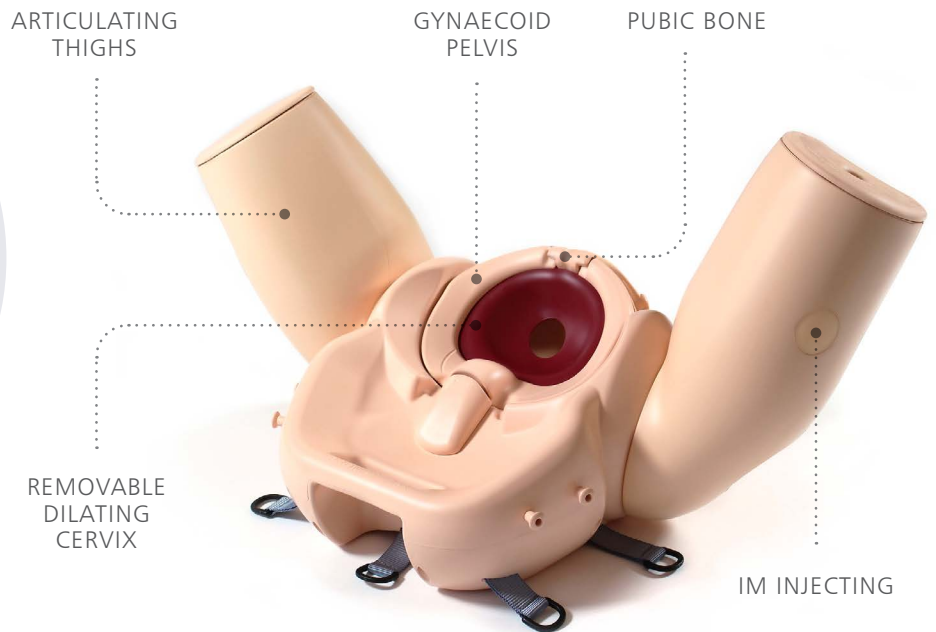
Learning has never been more lifelike

limbsandthings.com

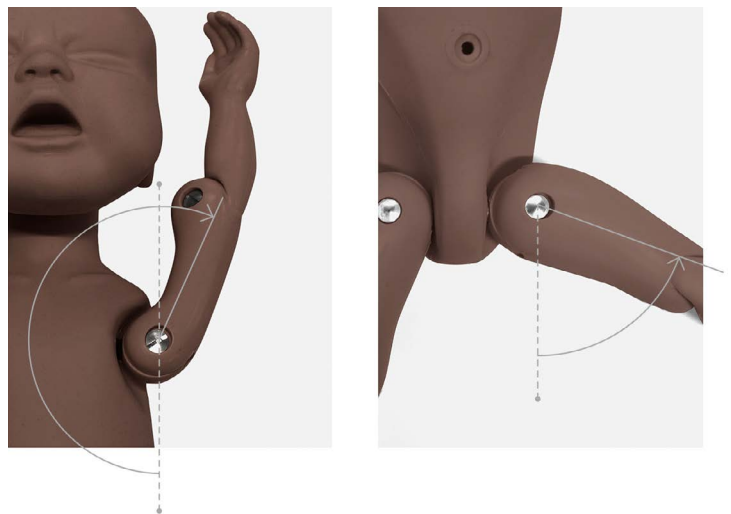
STANDARD & ADVANCED BIRTHING SIMULATOR - PROMPT FLEX

ARE STAND-ALONE TASK TRAINERS THAT CONTAIN A BIRTHING MOTHER & BABY WITH KEY ANATOMICAL FEATURES

The **Birthing Mother** features include a gynaecoid pelvis, flexible birthing canal, dilating cervix, a soft realistic pelvic floor and articulating thighs.



The **Enhanced Baby** has a realistic range of articulation in the shoulder and hip joints, as well as flexion at the thoracolumbar region.



* Standard only

Birthing Simulator - PROMPT Flex - Standard

80100

80200

A modular design birthing simulator allowing for numerous training scenarios.

Used either for stand-alone training or integrated into hybrid simulation, it is an ideal training solution for all skills relating to routine and difficult deliveries.



Birthing Simulator - PROMPT Flex - Advanced

80106

80206

Incorporates wireless force monitoring where force applied to the baby's head is measured during a shoulder dystocia drill. Includes an app with inbuilt scenarios allowing monitoring and recording of force, interventions made and time taken to deliver the baby.



Tablet not included
Download app at limbsandthings.com

QUALITIES

ANATOMY

- Birth canal and cervix
- Ischial spines and pubic bone
- Gynaecoid pelvis
- Articulating thighs
- IM injecting
- Fully articulated baby with detachable umbilical cord and placenta
- Baby includes clavicles, fontanelles and flexible head

KEY FEATURES

- Improved and more realistic pelvic floor
- Articulating thighs for McRoberts procedure
- Stretchable perineum
- Soft flexible birthing canal
- Additional modules to extend learning
- Optional lower legs for extended realism
- Optional wireless force monitoring for training in shoulder dystocia management

SAFETY

- Latex free

CLEANING & CARE

- Skin is washable using soap and water

SKILLS

	80100	80106
	80200	80206
• Communication & team work skills (SP)	✓	✓
• Normal	✓	✓
• Breech	✓	✓
• Shoulder dystocia management	✓	✓
• Instrumental (forceps & vacuum devices)	✓	✓
• Delivery of placenta	✓	✓
• Cord prolapse	✓	✓
• Urinary catheter placement	✓	✓
• IM injection pads	✓	✓
• Force feedback of baby's head	×	✓
• App with scenarios & force monitoring	×	✓

WHAT'S INCLUDED

	80100	80106
	80200	80206
Birthing Mother (+Upper Legs)	✓	✓
Standard Baby	✓	×
Wireless Force Monitoring Baby	×	✓
Placenta	✓	✓
Abdomen for PROMPT Flex	✓	✓
Perineum and Birth Canal	✓	✓
Bed Straps	✓	✓
Lubricant	✓	✓
Wheeled Carry Case	✓	✓

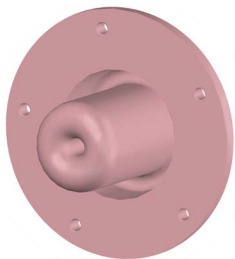
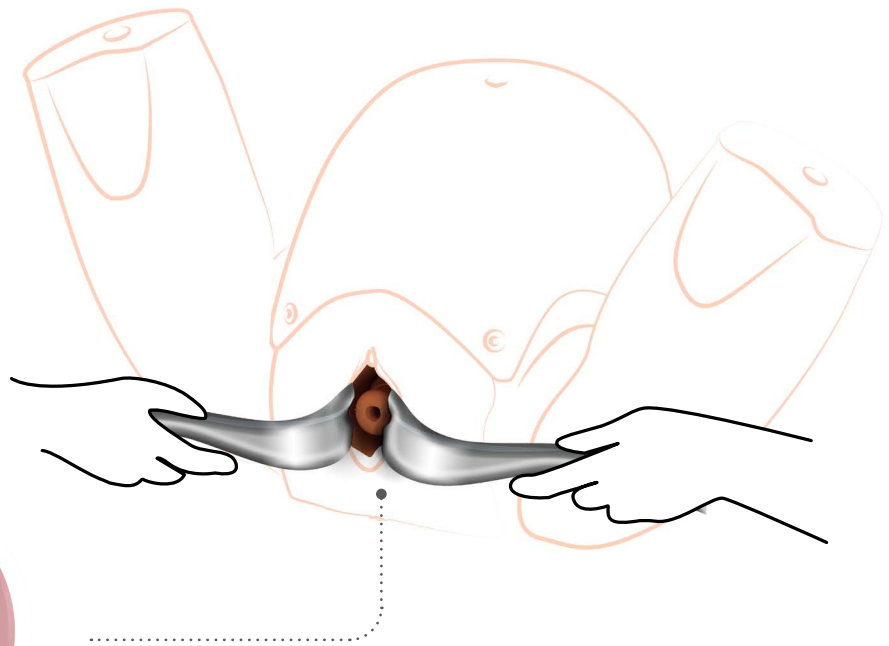
Cervical Cerclage Module (CCM) - PROMPT Flex

80180

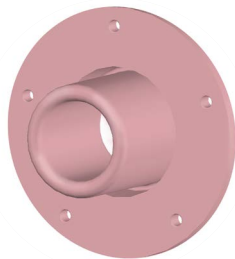
80280

This module is the ideal tool for trainees looking to develop the skills of elective and emergency cervical cerclage.

The easy to use design offers realistic movement of the cervix down the vaginal vault, enabling trainees to place the cerclage as high up the cervix as possible, which supports the learning of the McDonald technique.



Elective



Emergency



Developed in collaboration with:

- Dr Graham Tydeman, Consultant Obstetrician and Inventor, NHS Fife
- Professor Andrew Shennan OBE and Professor Annette Briley, Guy's and St. Thomas' NHS Foundation Trust

SKILLS

- Management of cervical incompetence
- Elective cerclage
- Emergency (or rescue) cerclage
- McDonald cerclage technique

QUALITIES

REALISM

- Realistic representation of a dilating cervix with presenting amniotic sac for emergency procedures
- Restrictive space within the vagina to perform the procedure as in life

KEY FEATURES

- Detachable cervix to allow for repeated training in both elective and emergency cerclage procedures
- The detachable OS provides instant feedback to the trainee
- Fluid filled amniotic sac replicates bulging membranes for emergency procedures

VERSATILITY

- Allows for the practice of both elective and emergency cervical cerclage
- Can be quickly and easily fitted into PROMPT Flex

SAFETY

- Main product is latex free however Amniotic Sacs provided contain latex



WHAT'S INCLUDED

80180

80280

- Cervical Cerclage Frame
- Cervical Cerclage Vagina
- Cervical Cerclage Elective OS (x5)
- Cervical Cerclage Emergency OS (x5)
- Cervical Cerclage Amniotic Sacs (x5)
- Cervical Cerclage Fluid System
- Cervical Cerclage Perineum

Cervical Dilatation & Effacement Module (CD&E) - PROMPT Flex

80102

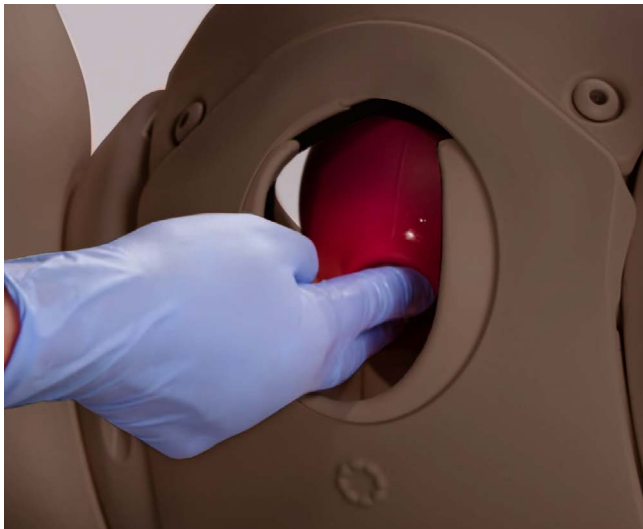
80202

Allows for training in assessment of both the latent and active first stages of labour.

This versatile module is an optional add-on to the PROMPT Flex Standard or Advanced.



Ideal for midwifery training.



Fetal station adjustment (-3 to +3)

Cervical Dilation (1-10cm)

QUALITIES

REALISM

- Realistic representation of cervixes, including anterior lip, and presenting parts in soft birth canal, with palpable ischial spines

KEY FEATURES

- Inserts to represent early labour cervixes - effacement, dilation and ripeness in line with Bishop's scoring
- Positioning mechanism allows adjustment of station, dilation and tilt without removal from the simulator
- Dynamic positioning mechanism allows adjustment of dilation in active labour
- Markers allow tutor to read positioning in situ
- Numerous presenting part inserts including
 - flexed
 - deflexed
 - brow
 - face
 - breech
 - caput and moulding

VERSATILITY

- Presenting parts and cervix can be set up outside the model for demonstration, then placed inside for examination

SAFETY

- Latex free

SKILLS

- Assessment and Bishop's scoring of:
 - Cervical dilation (1-10cm)
 - Cervical effacement (0-100%)
 - Cervical ripeness/consistency (soft, medium, hard)
 - Cervical position (anterior, mid, posterior)
 - Fetal station (-3 to +3)
- Assessment of and artificial rupture of membranes
- Assessment of presenting part - flexed, deflexed, brow, face, breech, caput and moulding and caput formation

WHAT'S INCLUDED

80102

80202

Perineum

Pelvic Ring

Static Rig

Dynamic Rig

Set of 7 Latent Labour Cervixes

Dynamic Cervix

Set of 5 Presenting Parts

Set of 2 Difficult Labour Heads

Amniotic Membrane Set

Set of 3 Caputs (x2)

Enhanced Caesarean Section Module (ECSM) - PROMPT Flex

80300

80400

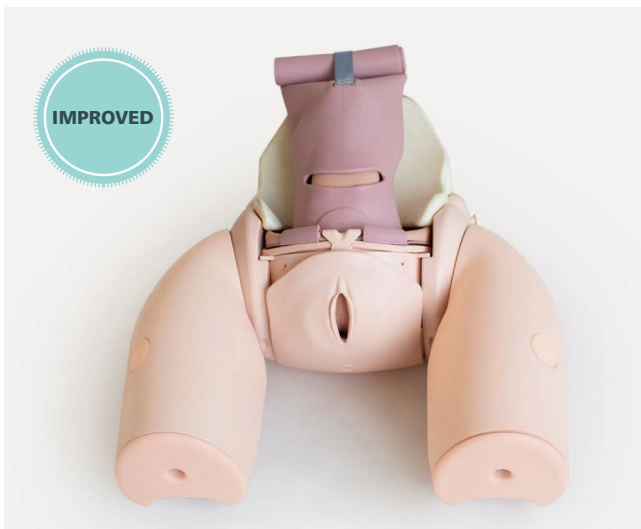
Ideal for practising the necessary skills required when performing both routine and complex caesarean section. Trainees can have exposure to delivering a difficult baby such as an impacted fetal head (IFH), or a transverse lie.

A pre-incised abdomen allows for repeated delivery practice to help improve confidence and familiarity of manoeuvres.



The module can be used to practise any of the following methods of delivering a deeply impacted fetal head:

- Manual cephalic extraction manoeuvres
- Vaginal push up
- Reverse breech extraction (pull technique)
- Patwardhan's technique
- Use of a fetal pillow



QUALITIES

REALISM

- Abdominal skin has realistic appearance, fat layer and feel of at-term abdomen
- Realistic feel of uterus interior during delivery
- Head and shoulders present at realistic level in relation to the uterine incision

KEY FEATURES

- Uterus holds baby firmly in position for cephalic, breech and transverse presentations
- Fundal pressure can be applied to aid delivery of the baby for IFH manoeuvres
- Pre-incised skin allows easy repeat delivery practice
- Realistically mimics the restrictive space of the pelvic inlet for IFH manoeuvres
- Accommodates retraction using metal, plastic or rubber retractors

VERSATILITY

- Allows for training in routine and complex caesarean section at full dilation

SAFETY

- Latex free

SKILLS

- Cephalic and breech delivery
- C-section at full dilation:
 - Head disimpaction using vaginal push methods
 - Use of balloon disimpacting device
 - Reverse breech extraction
 - Patwardhan's techniques
- Transverse lie
- Instrument assisted C-section delivery
- Delivery of the placenta for routine c-sections
- Teamwork and human factors training in emergency C-section

WHAT'S INCLUDED

80300

80400

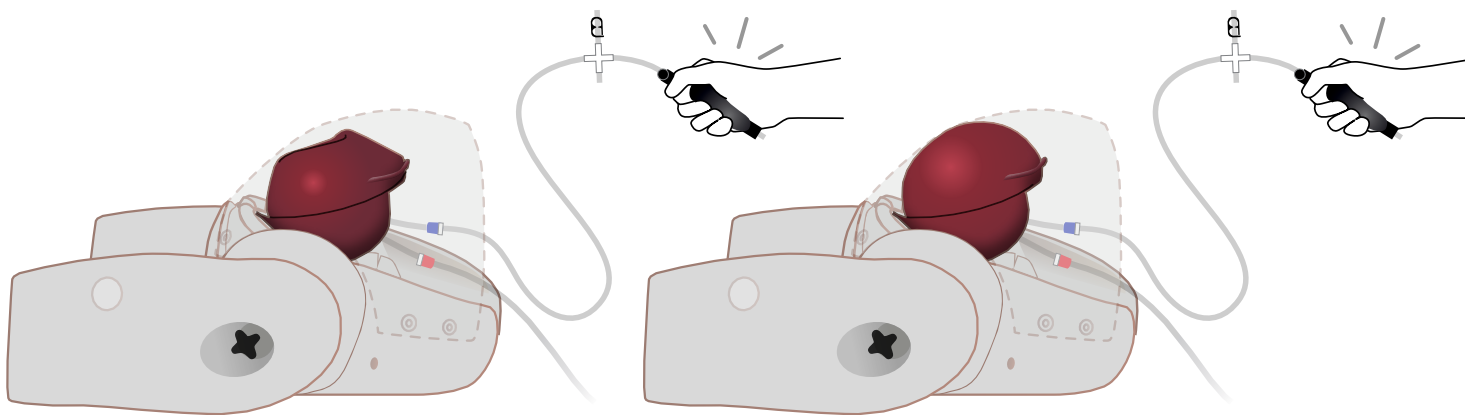
Perineum
Uterus for Caesarean Section Module
Impacted Fetal Head Uterus
Pre-incised Delivery Skin
Cervix for Caesarean Section Module
Foam Uterus Support
Pelvic Floor

Postpartum Haemorrhage Module - PROMPT Flex

80101 80201

This module is an optional add-on for the Standard or Advanced Birthing Simulators.

It allows training in the management of post-partum bleeding, and offers a realistic simulation of an atonic and contracting uterus.



QUALITIES

REALISM

- Atonic uterus can simulate contraction on fundal massage

KEY FEATURES

- Blood loss of up to 2 litres can be simulated
- Air bulbs are used to stimulate blood flow and control atonic state of the uterus

VERSATILITY

- Can be quickly and easily fitted into the birthing mother to allow simulation of situations where bleeding occurs directly after delivery

SKILLS

- Management of postpartum bleeding:
 - Fundal massage
 - Bi-manual compression
 - Haemostatic balloon insertion and management
- Communication skills with mother when used with Simulated Patient
- Intramuscular injection
- Estimating blood loss

WHAT'S INCLUDED

80101 80201

- PPH Uterus Assembly - PROMPT Flex
- Concentrated Venous Blood - Starter Pack (x2)
- PPH Blood Container - PROMPT Flex



Using PROMPT in conjunction with effective professional training, reports show:



- 50% Reduction on brain injury
- 45% Reduction in school-aged cerebral palsy
- Reduction in maternal deaths

Source: <https://www.promptmaternity.org/publications>



PROMPT Flex is suitable for use on Obstetric Training Programmes including:

ALSO (Advanced Life Support in Obstetrics)

BLSO (Basic Life Support in Obstetrics)

MOET (Managing Obstetric Emergencies and Trauma)

MORE OB (Managing Obstetric Risks Efficiently)

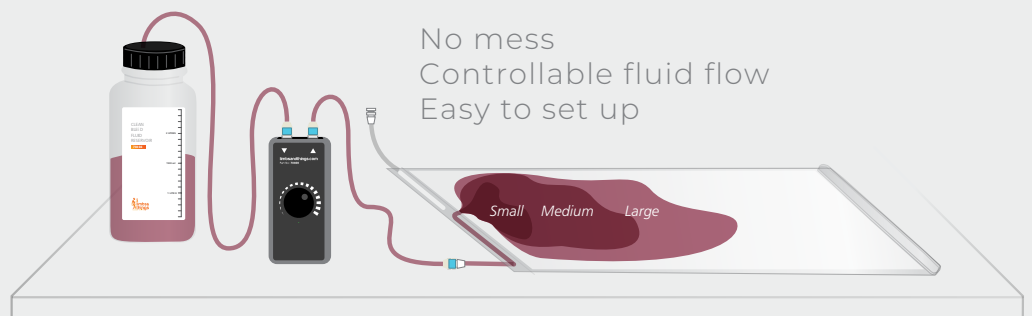
REOT (Rural Emergency Obstetrics Training)

TeamSTEPPS (Team Strategies and Tools to Enhance Performance and Patient Safety)

YOU MAY ALSO BE INTERESTED IN **CLEAN BLEED™ MAT**

70400

Ideal product to support any simulation scenario where external blood or fluid loss is key indicator and measure of emergency interventions taken.

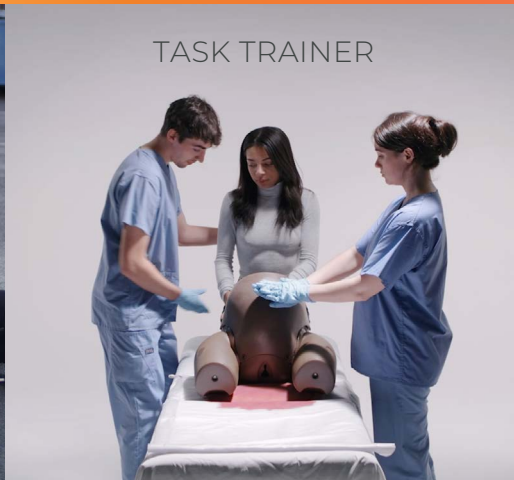


Designed to support different scenarios

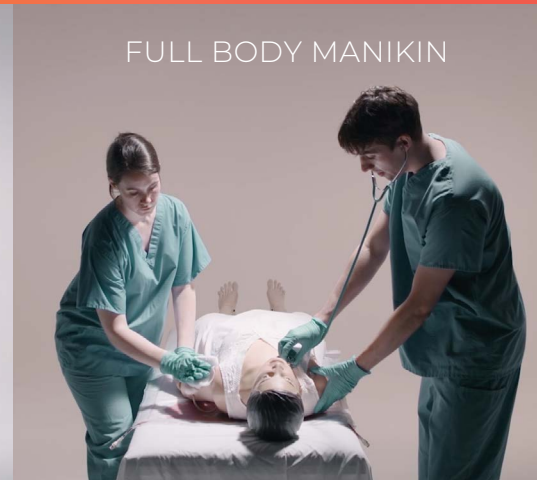
SIMULATED PATIENT



TASK TRAINER



FULL BODY MANIKIN



REQUEST A QUOTE



REQUEST A DEMO



BUY ONLINE



CUSTOMER SUPPORT

AUS V.10 Jan 2022

Limbs & Things Australia Pty Ltd.

92 Wedgewood Road, Hallam, Victoria 3803

E: info@limbsandthings.com

T: 00 61 3 9708 6511

limbsandthings.com