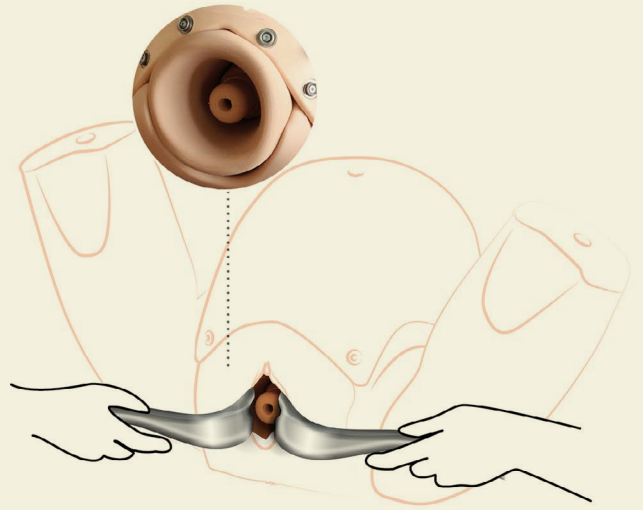




USER GUIDE



CERVICAL CERCLAGE MODULE PROMPT FLEX

This product is available
in light and dark skin tones

80180

80280

FOR MORE SKILLS TRAINING PRODUCTS VISIT

limbsandthings.com

Sussex Street, St Philips, Bristol, BS2 0RA, UK | sales@limbsandthings.com | +44 (0) 117 311 0500

PACKAGE SUPPLIED	3
SAFETY & CLEANING INSTRUCTIONS	4
SET UP	5
• GETTING THE PROMPT FLEX READY	5
- Removing the ABDOMINAL SKIN	
- Removing PELVIC RING CLAMP, CERVIX & PERINEUM PROMPT FLEX	
• CERVICAL CERCLAGE	7
- Fitting the ELECTIVE/EMERGENCY OS to the CC VAGINA	
- Fitting the CC VAGINA to the CC FRAME	
• ELECTIVE OS	8
- Fitting the ELECTIVE MODULE into the PROMPT FLEX	
• EMERGENCY OS	9
- Setting up the FLUID SYSTEM	
CARE & MAINTENANCE	12

TAKE A LOOK AT OUR
PROMPT FLEX VIDEO



VISIT THE WEBSITE
limbsandthings.com

OR YOUTUBE CHANNEL
[youtube.com/limbsandthings](https://www.youtube.com/limbsandthings)

PACKAGE SUPPLIED

Cervical Cerclage Frame

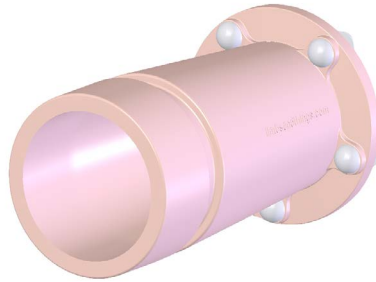
80181

80281



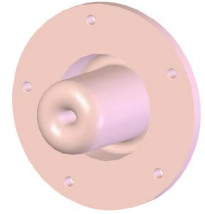
Cervical Cerclage Vagina

80182



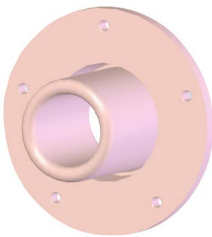
Cervical Cerclage Elective OS (x5)

80183



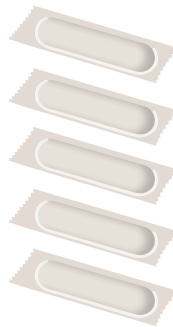
Cervical Cerclage Emergency OS (x5)

80184



Cervical Cerclage Amniotic Sac (x5)

80185



Cervical Cerclage Fluid System

80186



Cervical Cerclage Perineum

80187

80287



YOU'LL NEED (NOT SUPPLIED)

Birthing Simulator PROMPT Flex

STANDARD

80100

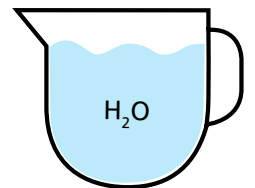
80200

ADVANCED

80106

80206

Jug of Water



SAFETY & CLEANING INSTRUCTIONS

READ THE SAFETY INSTRUCTIONS CAREFULLY BEFORE USING YOUR CERVICAL CERCLAGE MODULE PROMPT FLEX

DO's



Follow all instructions. Keep these instructions. Heed all warnings.

Wear gloves at all times and remove all jewellery items. Sharp surfaces such as finger nails and rings can lead to damage of silicone parts.



We recommend using ethilon sutures rather than mersilene tape with the product.

Drain all water from the product and clean the product with a soft damp cloth or sponge, using only warm water with mild detergent, after every training session.



DON'Ts



Do not install near any heat sources, do not expose the product to flames or use near a naked flame source. Do not use flammable solvents near or on this product.

Do not use any attachments other than those supplied by the manufacturer.



Do not disassemble the product or attempt to repair a faulty unit, please return the product to Limbs & Things for assessment and repair.

Do not allow young children to use this product.



STORAGE & TRANSPORTATION



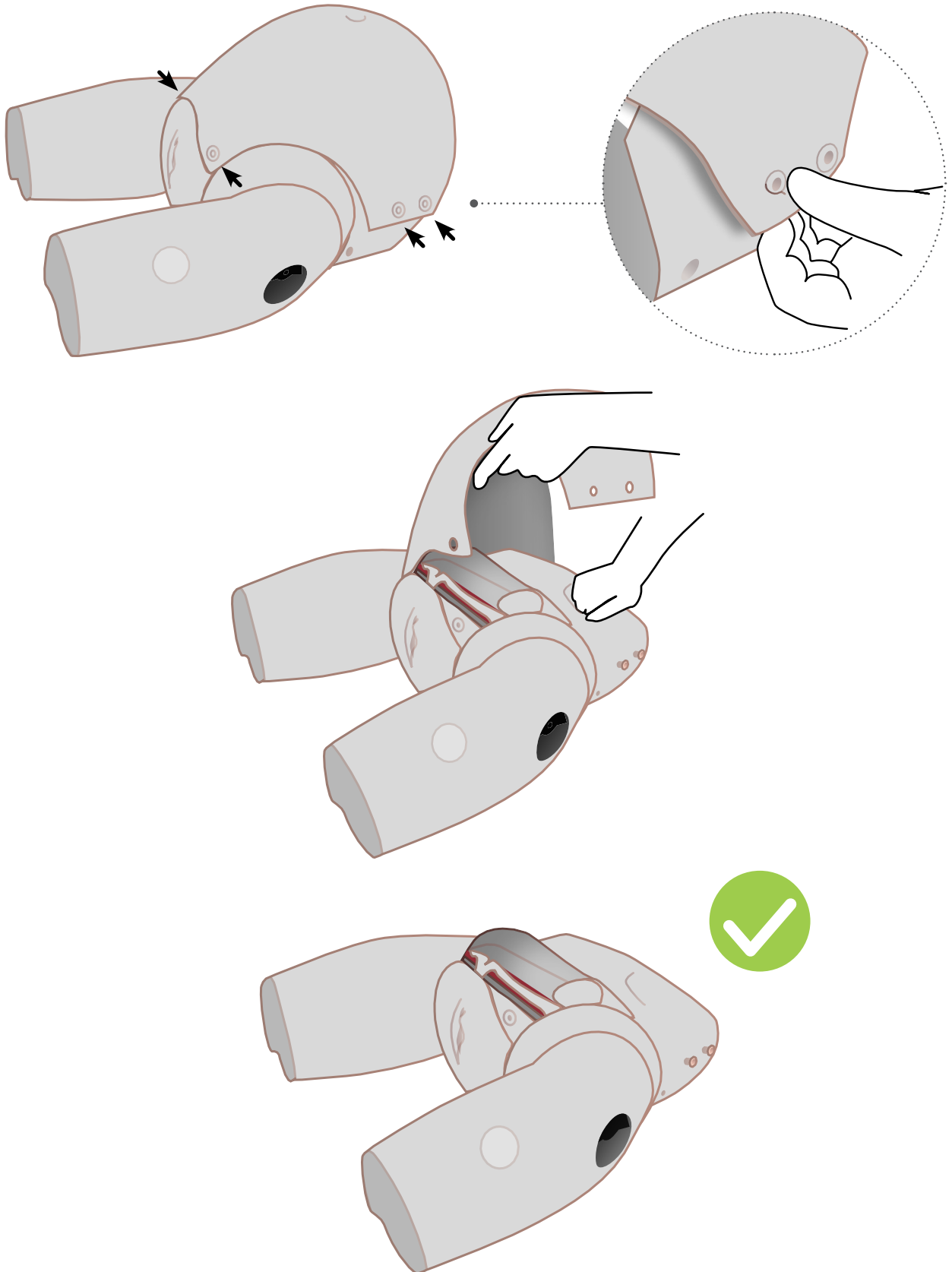
Remove all water from the product when a training session is completed.



Always ensure the product is carefully packed and secured during transportation and storage in order to prevent personal injury or damage to the product.

 Cervical Cerclage Amniotic Sac contains latex.

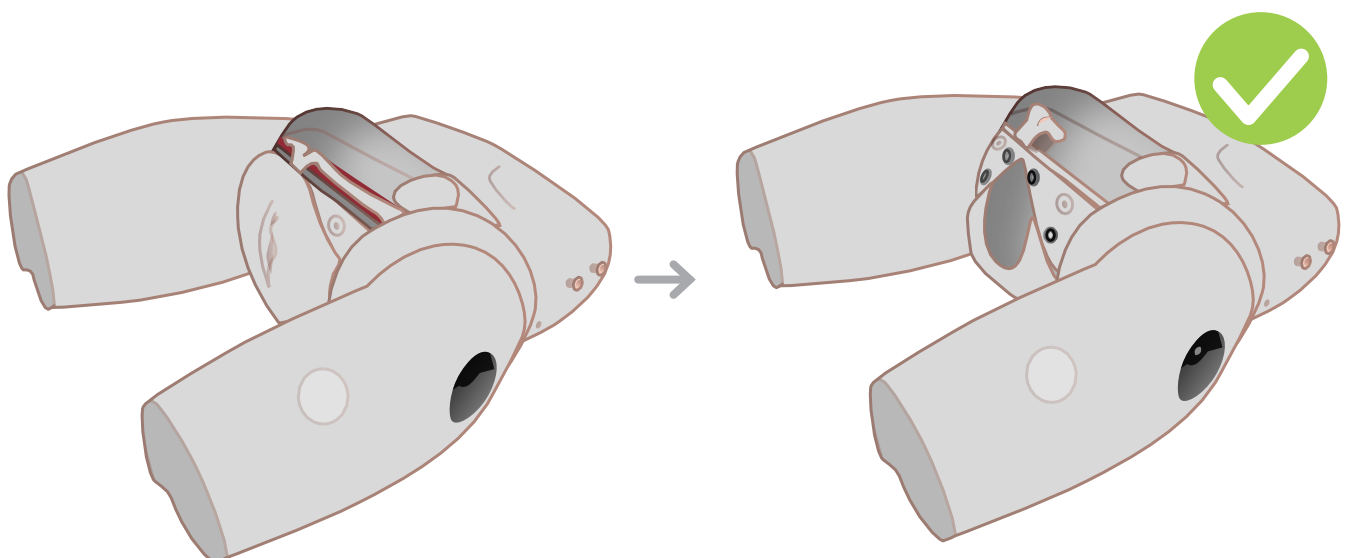
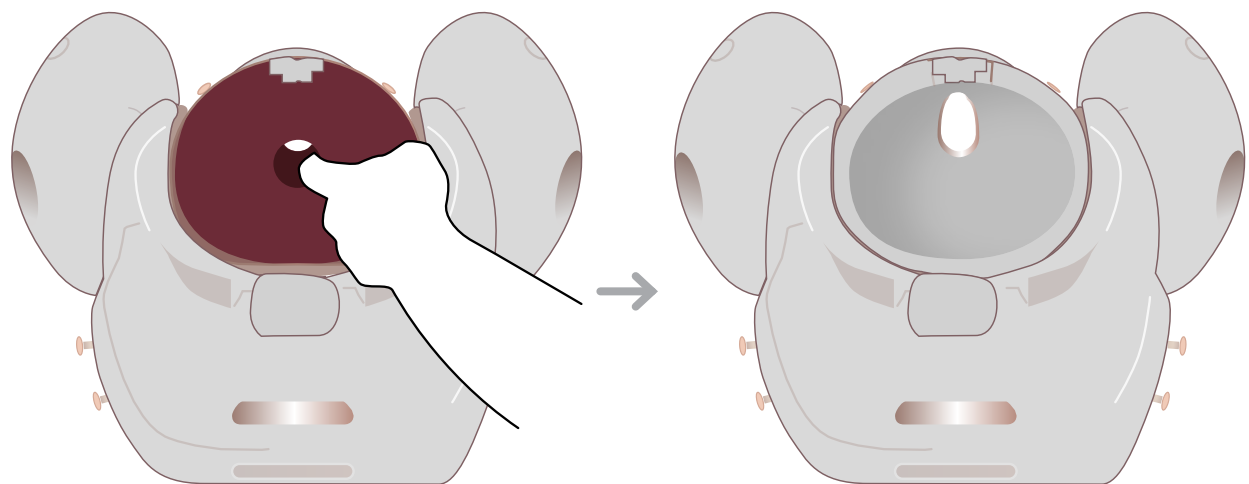
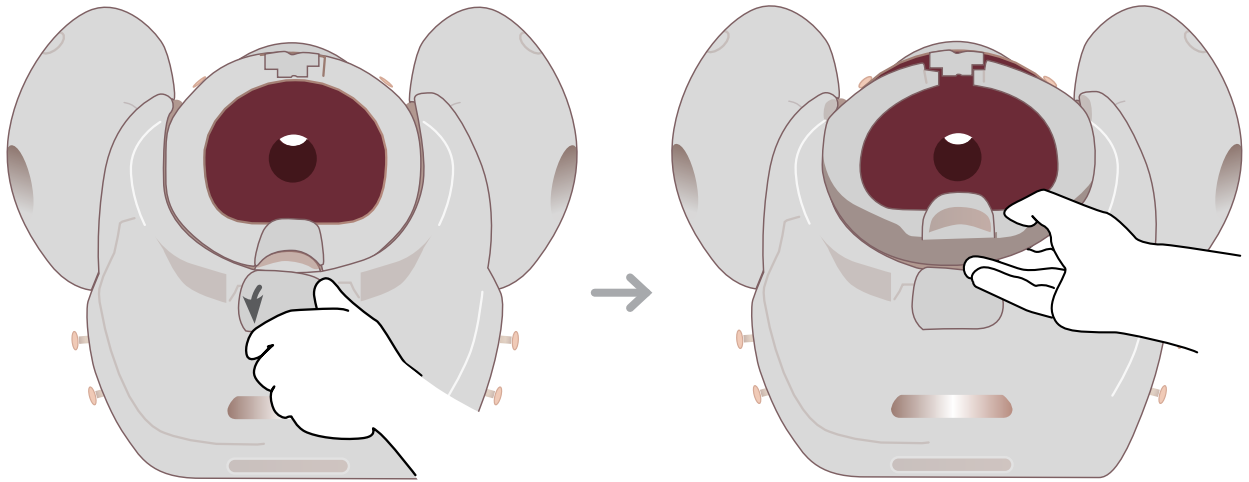
Removing the ABDOMINAL SKIN



SET UP

GETTING THE PROMPT FLEX READY

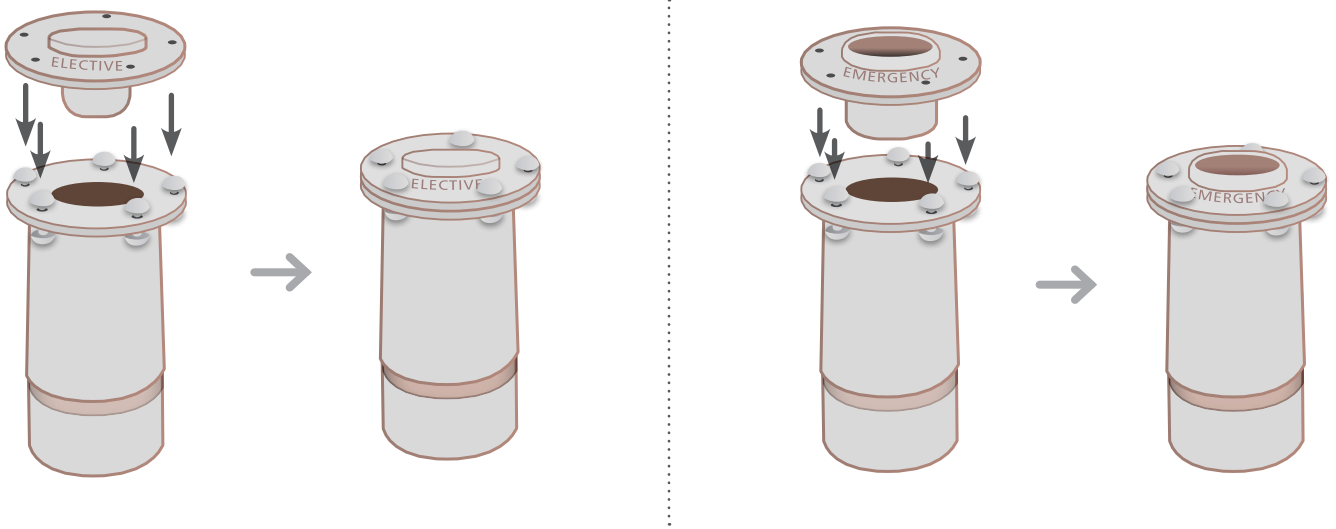
Removing PELVIC RING CLAMP, CERVIX & PERINEUM PROMPT FLEX



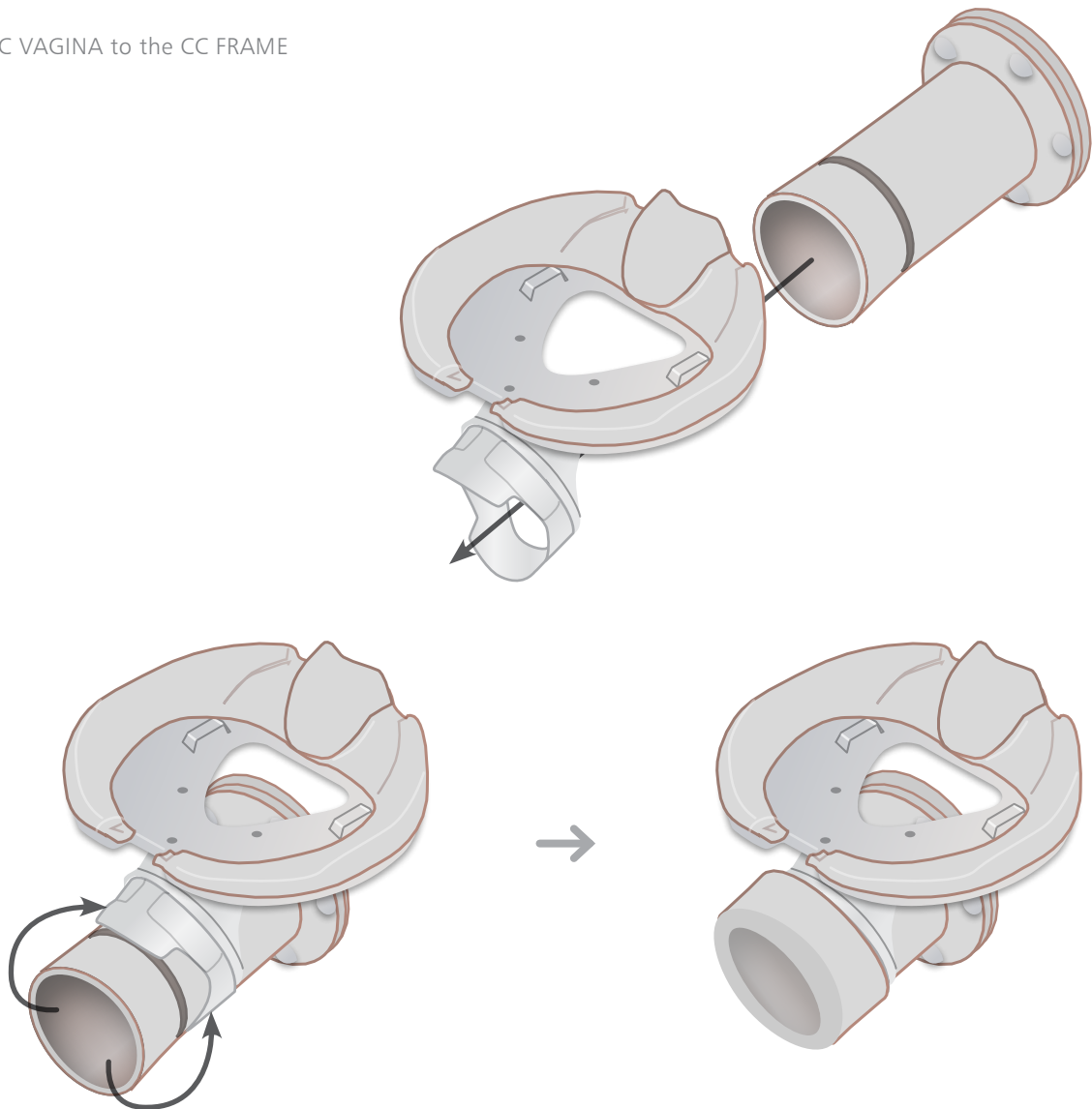
SET UP

CERVICAL CERCLAGE

Fitting the ELECTIVE/EMERGENCY OS to the CC VAGINA



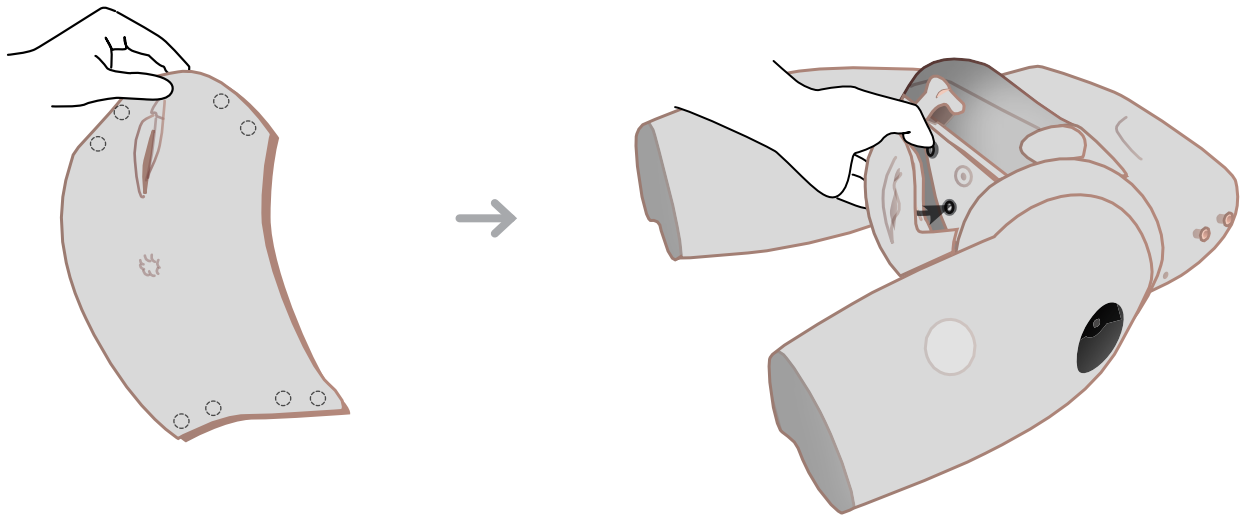
Fitting the CC VAGINA to the CC FRAME



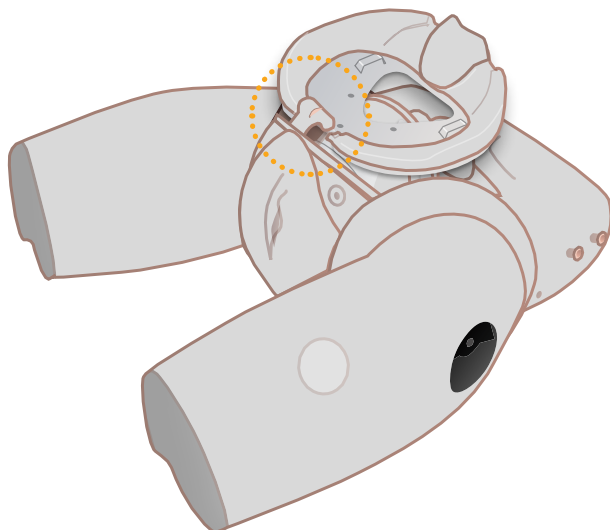
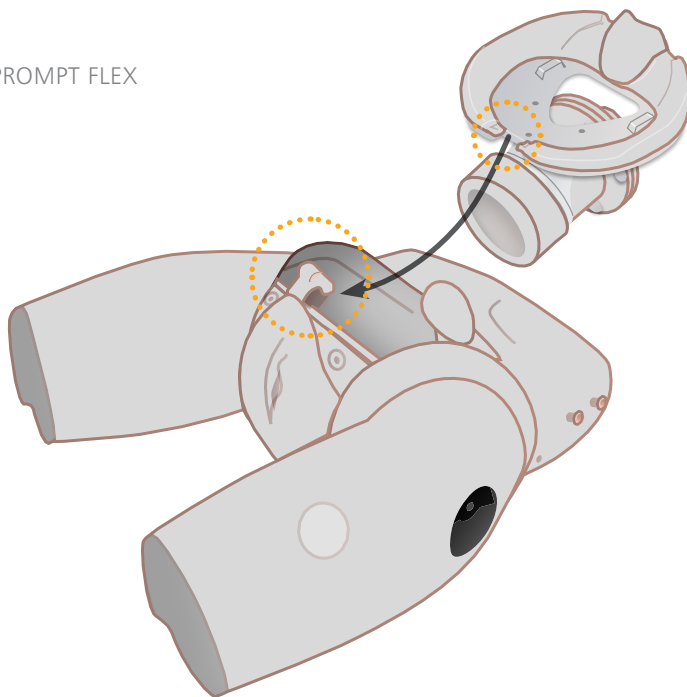
SET UP

ELECTIVE CERCLAGE

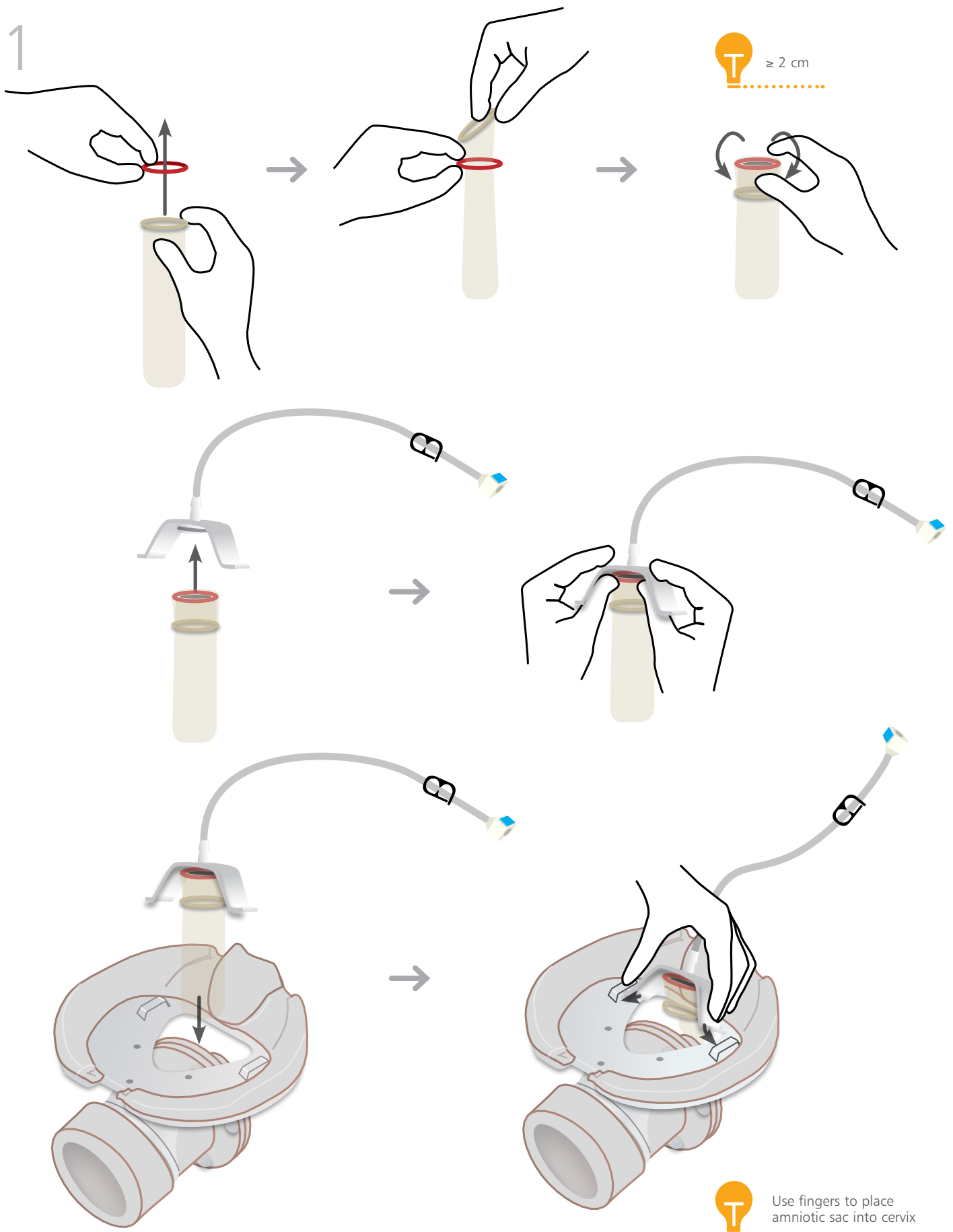
Fitting the CC PERINEUM



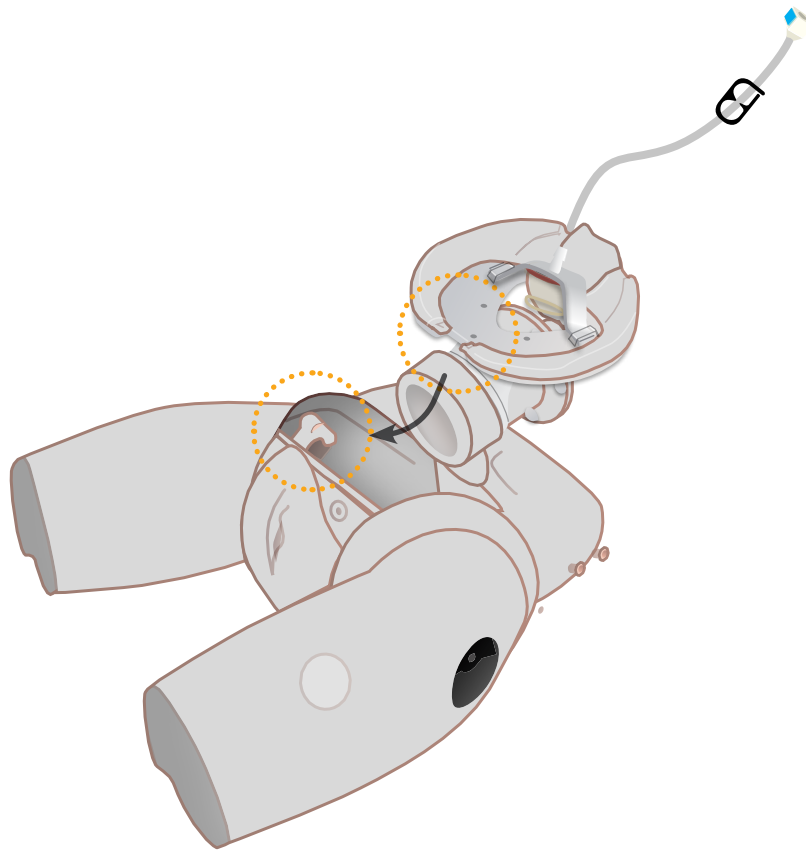
Fitting the MODULE into PROMPT FLEX



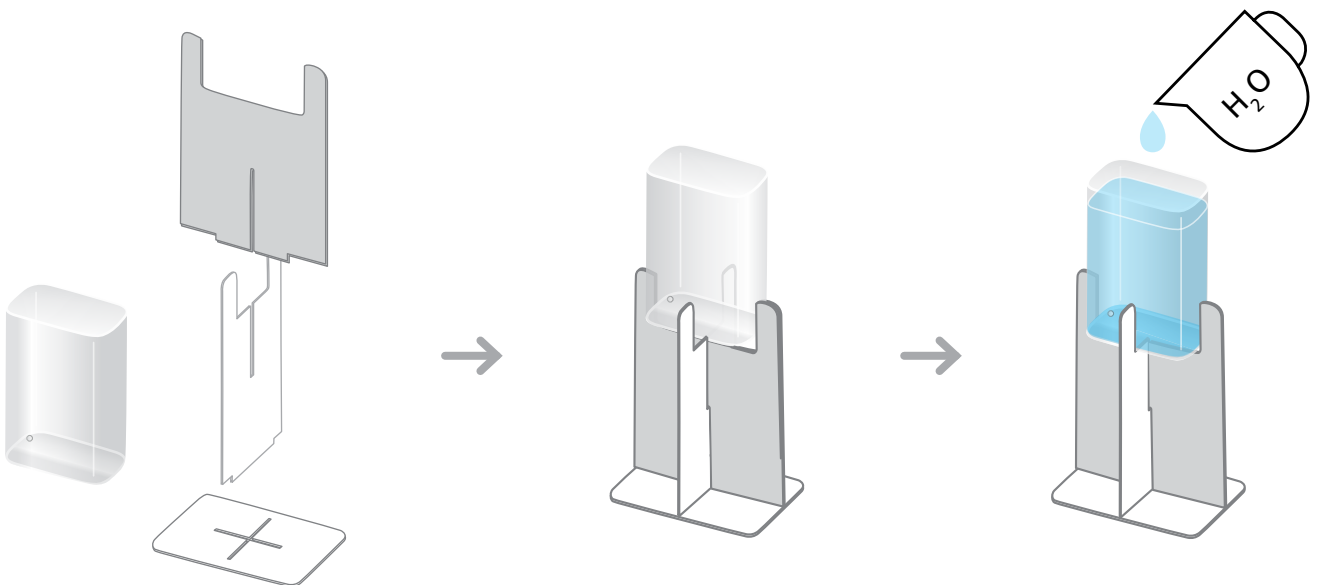
ELECTIVE CERCLAGE MODULE
IS READY TO USE



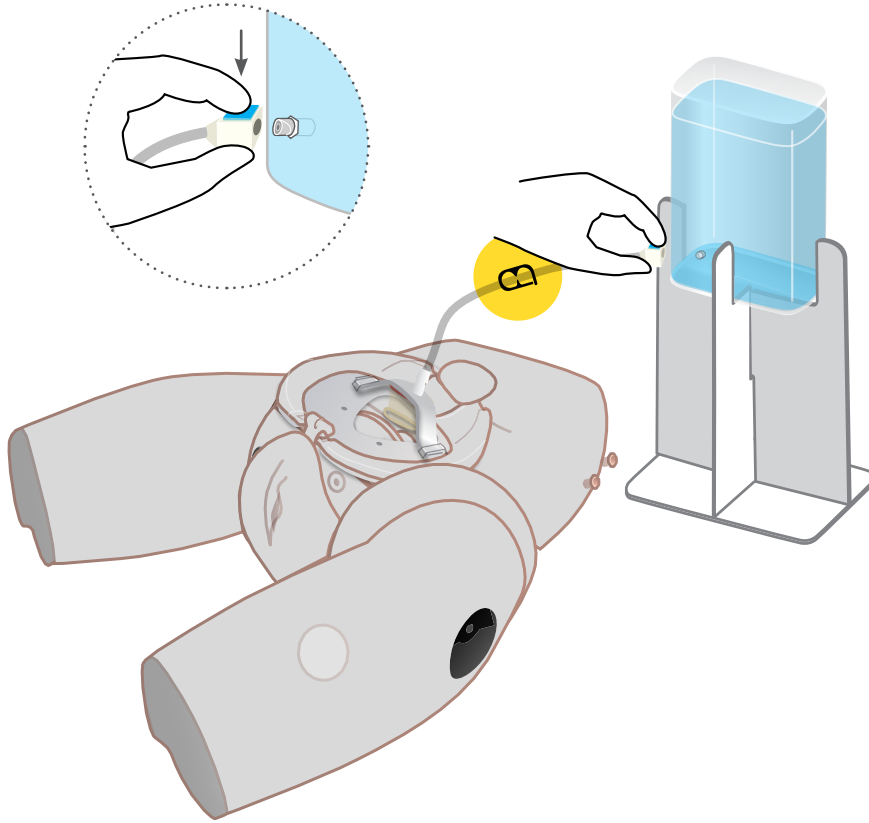
2



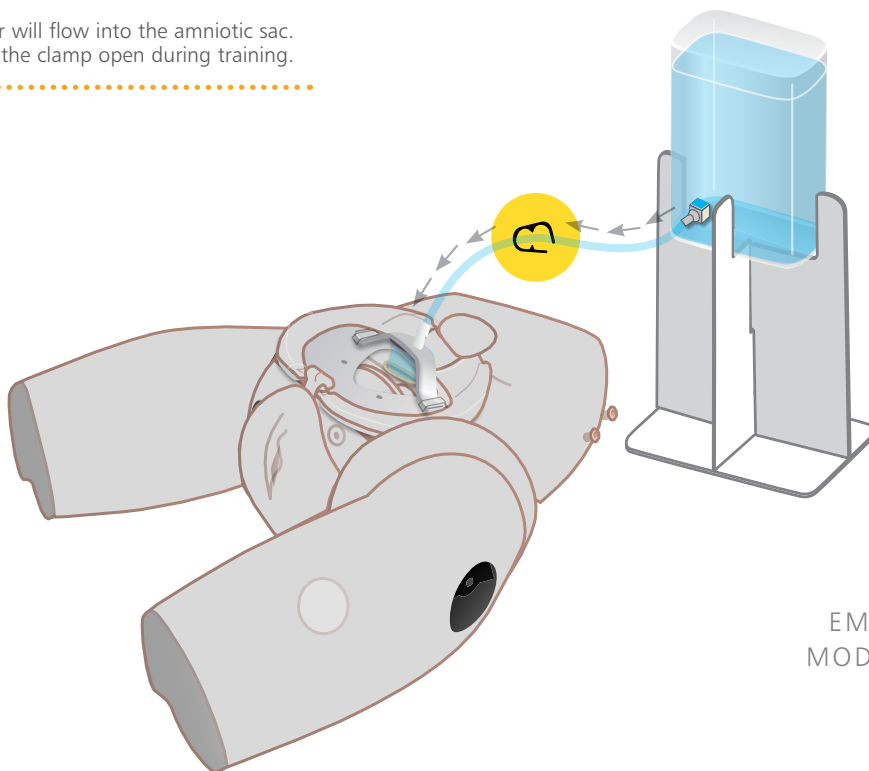
3



4



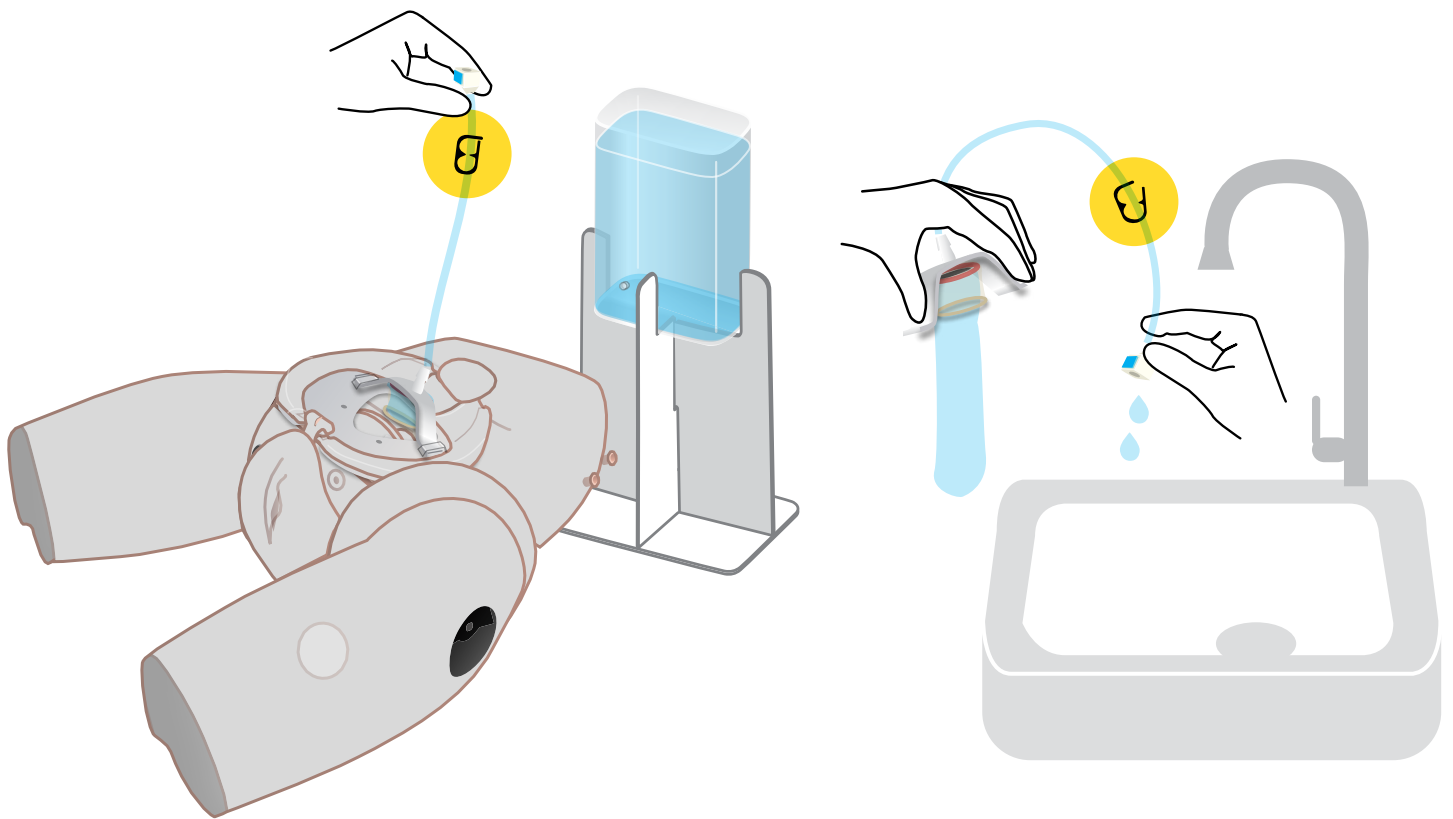
T Water will flow into the amniotic sac. Keep the clamp open during training.



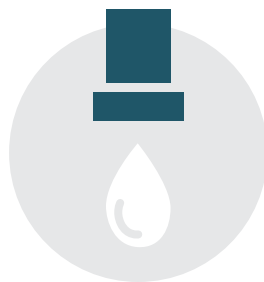
EMERGENCY CERCLAGE
MODULE IS READY TO USE

CARE & MAINTENANCE

Emptying the AMNIOTIC SAC



Remove sutures carefully



Remove water from product



Clean with a damp cloth