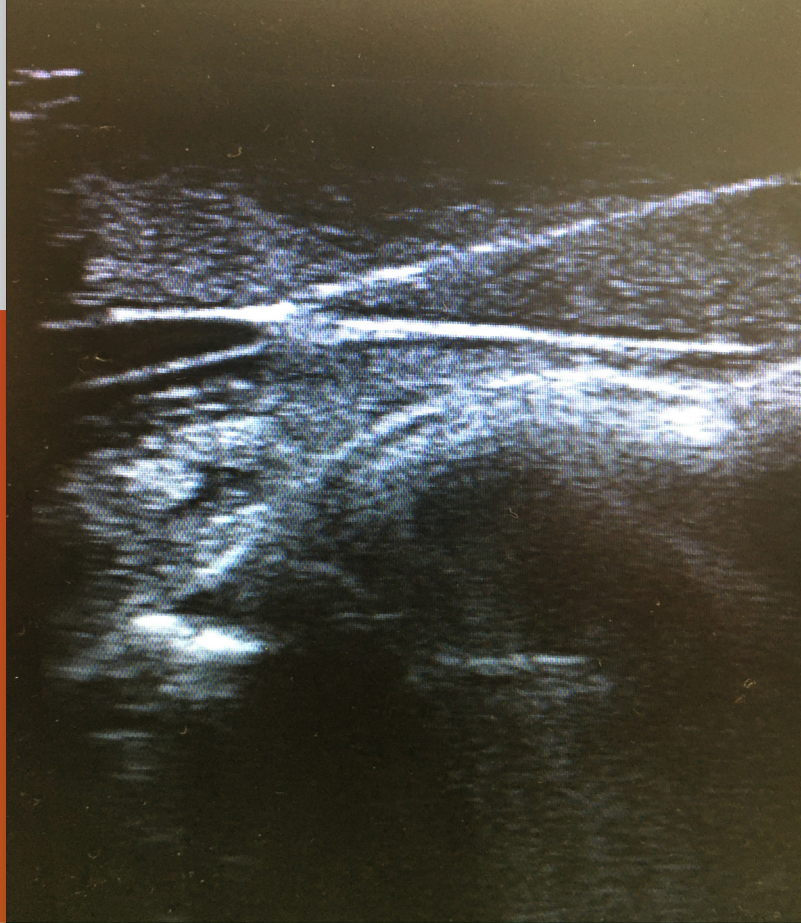




USER GUIDE



ULTRASOUND SHOULDER UPGRADE KIT

This product is available
in light and dark skin tones

70214

70225

FOR MORE SKILLS TRAINING PRODUCTS VISIT

limbsandthings.com

Sussex Street, St Philips, Bristol, BS2 0RA, UK | sales@limbsandthings.com | +44 (0) 117 311 0500

INDEX

PACKAGE SUPPLIED	2
SAFETY & CLEANING INSTRUCTIONS	3
SET UP	4
• REMOVE PALPATION SHOULDER & ATTACH ULTRASOUND SHOULDER	4
• FILLING JOINTS	6
• FLUID DIAGRAM	7
• EMPTYING JOINTS	8
CARE & MAINTENANCE	9
• REPLACING THE SHOULDER MODULE	9
APP FEATURES	11

PACKAGE SUPPLIED

Shoulder Module
Ultrasound Guided

70213

70224



Filling Kit

70217



Synovial Fluid (250ml)

70022



YOU WILL NEED (NOT SUPPLIED)

Linear Probe



Ultrasound Gel



SAFETY & CLEANING INSTRUCTIONS

READ THE SAFETY INSTRUCTIONS CAREFULLY BEFORE USING YOUR SHOULDER INJECTION TRAINER

DO's



Follow all instructions. Keep these instructions. Heed all warnings. Handle with care.

Use needles provided or near new needle of 21 gauge.



Refer all servicing to qualified service personnel. Servicing is required when the apparatus has been damaged.

Clean the product with a damp soft cloth or sponge, using only warm water with mild detergent.



DON'Ts



Do not install near any heat sources, do not expose the product to flames or use near naked flame sources. Do not use flammable solvents near or on this product.

Do not over rotate/move the shoulder as this can damage the product.



Do not overfill the joints.

STORAGE & TRANSPORTATION



Always ensure that the products are properly packed and secured during transportation and storage in order to prevent personal injury or damage to the product.



Empty the fluid from the joints before storing.



THE ULTRASOUND MODULE MUST BE STORED CAREFULLY

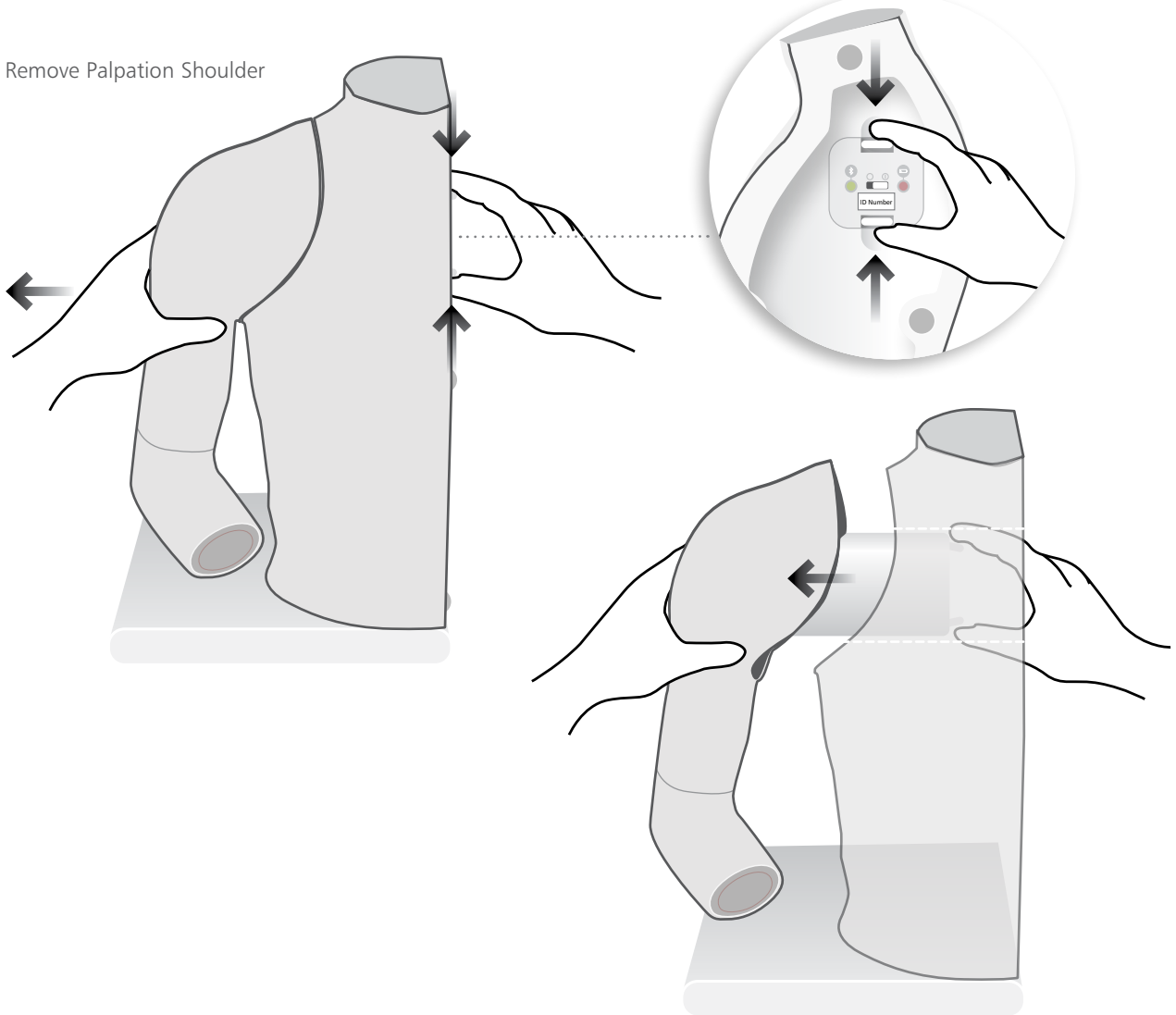
The Shoulder Ultrasound Module is extremely delicate, make sure it is stored everytime after use in its protective box.



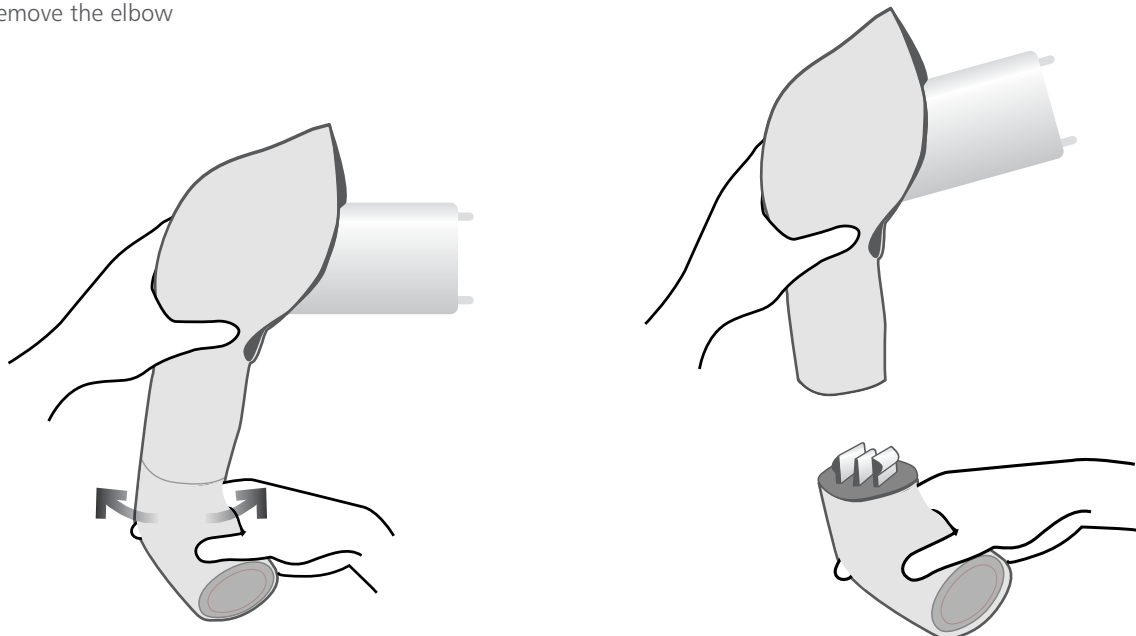
SET UP

REMOVE PALPATION SHOULDER & ATTACH ULTRASOUND SHOULDER

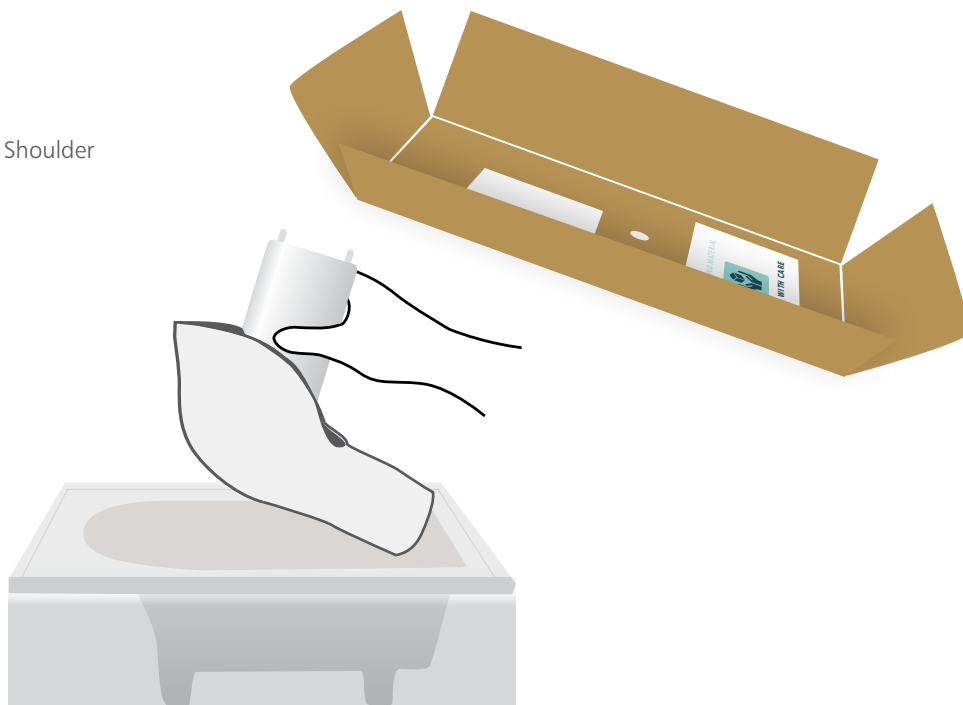
1 Remove Palpation Shoulder



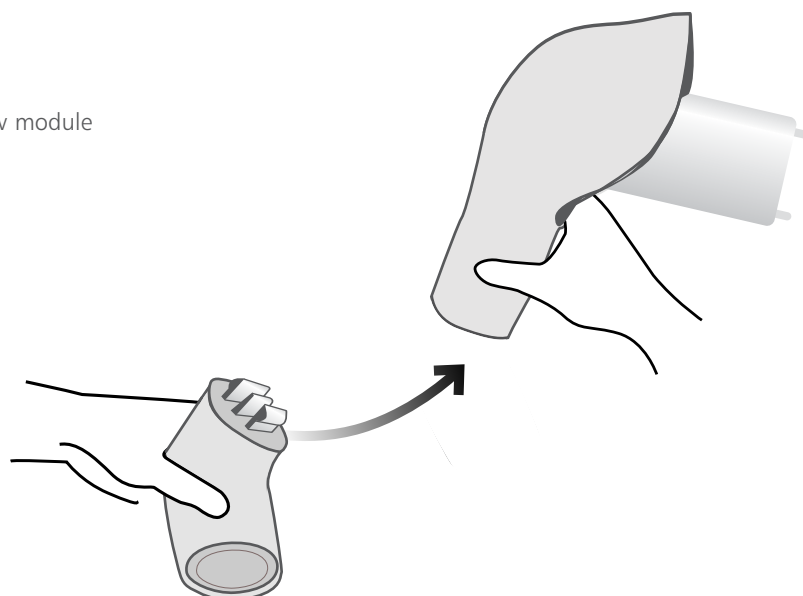
2 Remove the elbow



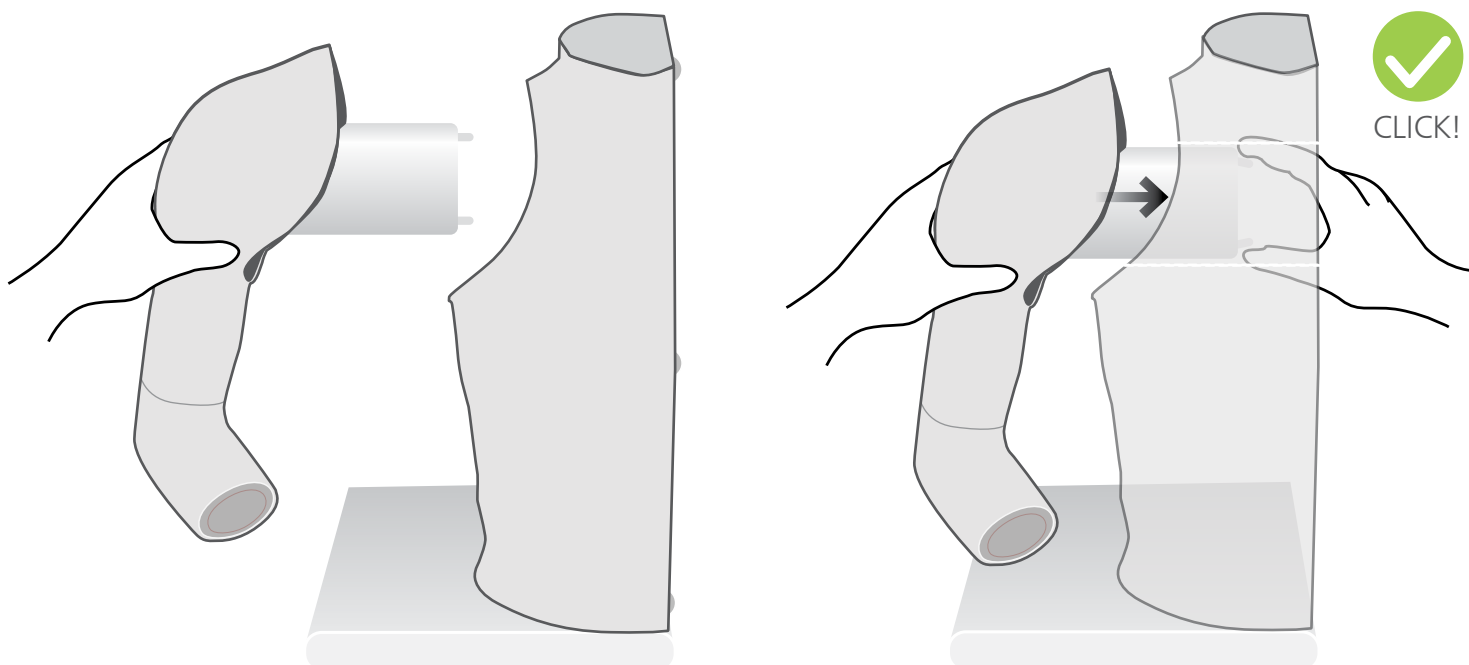
3 Take Ultrasound Shoulder



4 Attach the elbow to new module



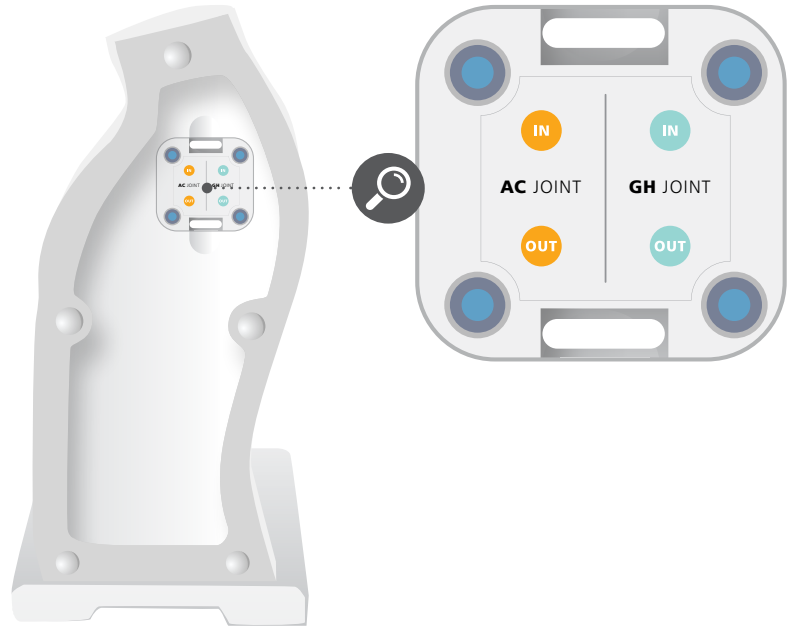
5 Mount Ultrasound Shoulder into torso



SET UP

FILLING JOINTS

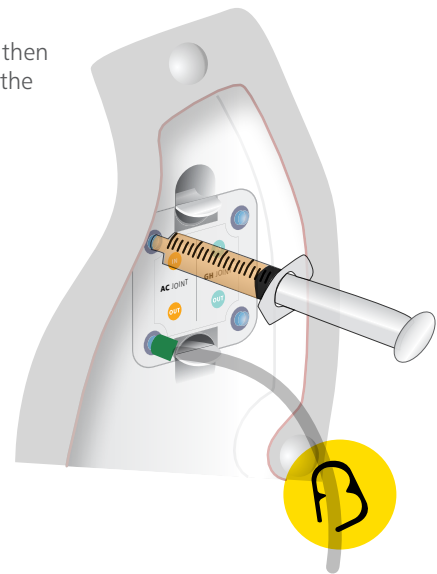
1 Fill syringe



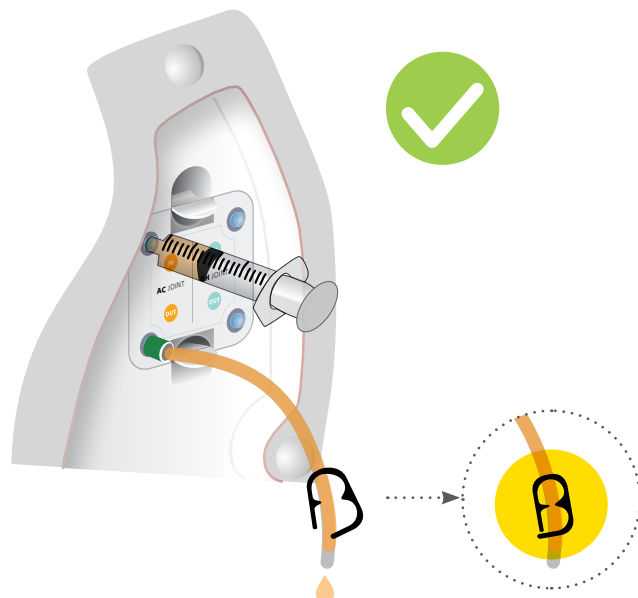
2 Push and then screw on the tube



3 Push and then screw on the syringe



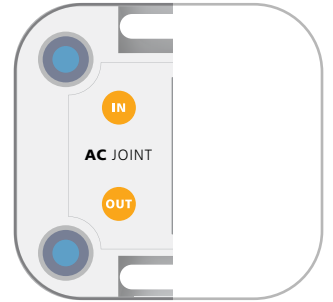
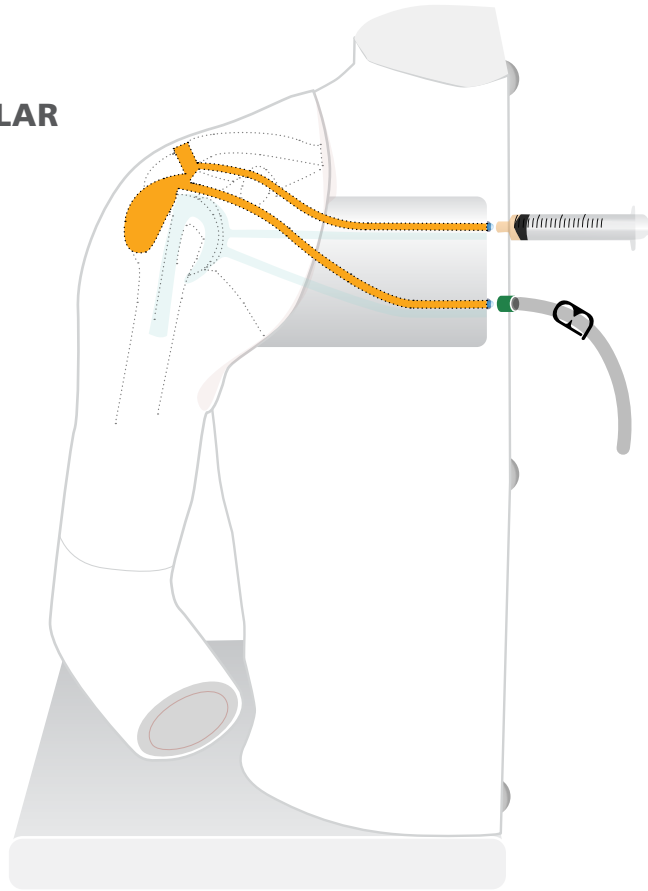
4 Inject fluid from syringe into joint until it starts coming out from the tube



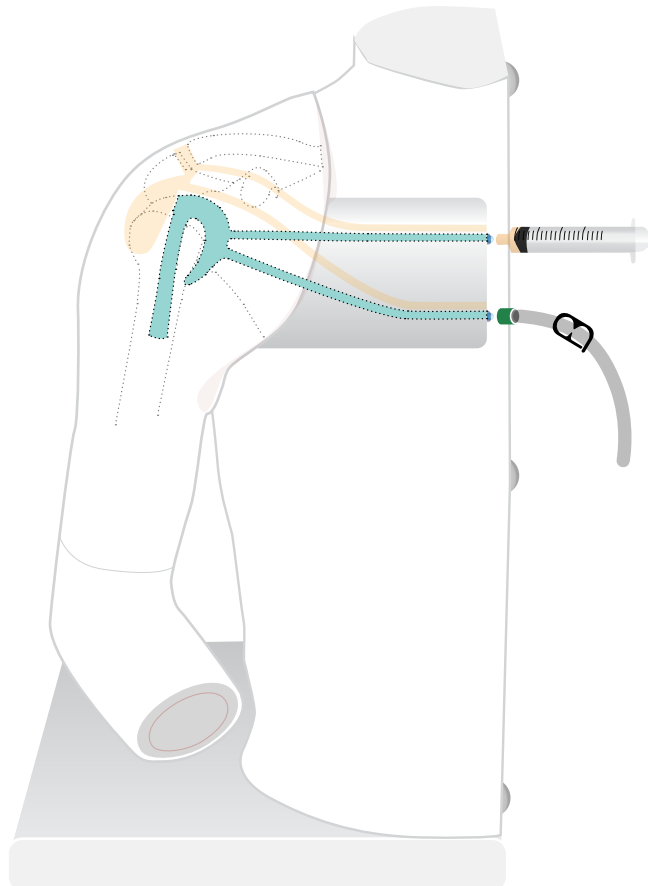
SET UP

FLUID DIAGRAM

**ACROMIOCLAVICULAR
JOINT**



**GLENOHUMERAL
JOINT**



SET UP

EMPTYING JOINTS

- 1 Push and then screw on the tube

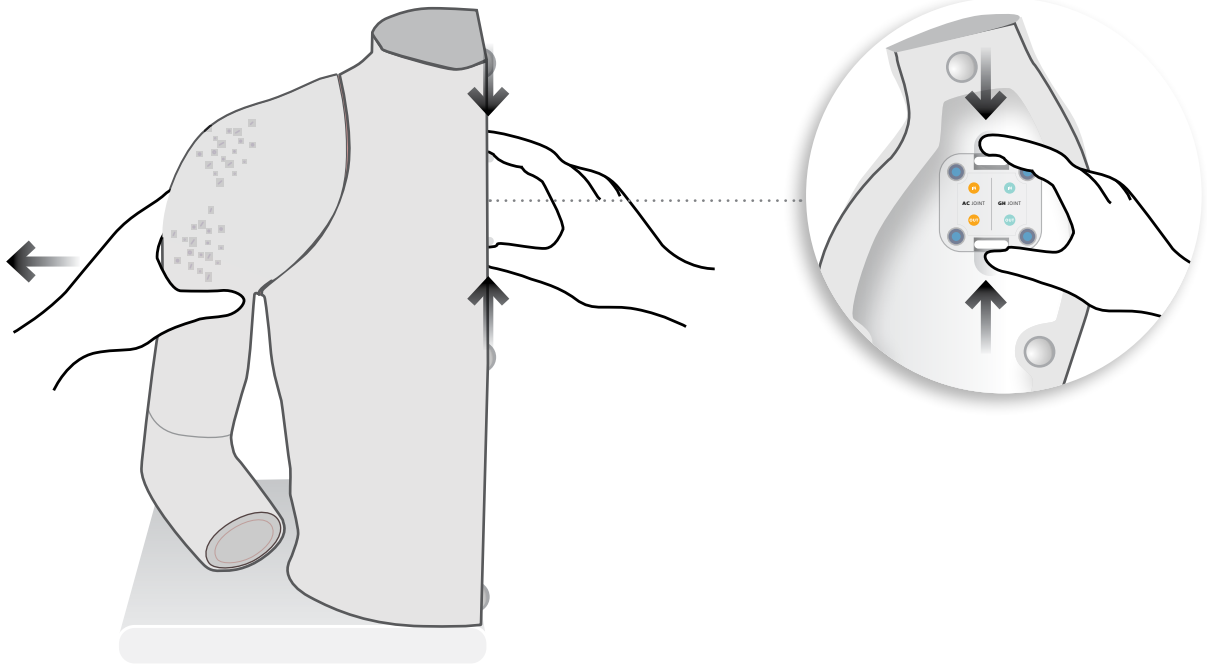


- 2 Open the clamp to drain

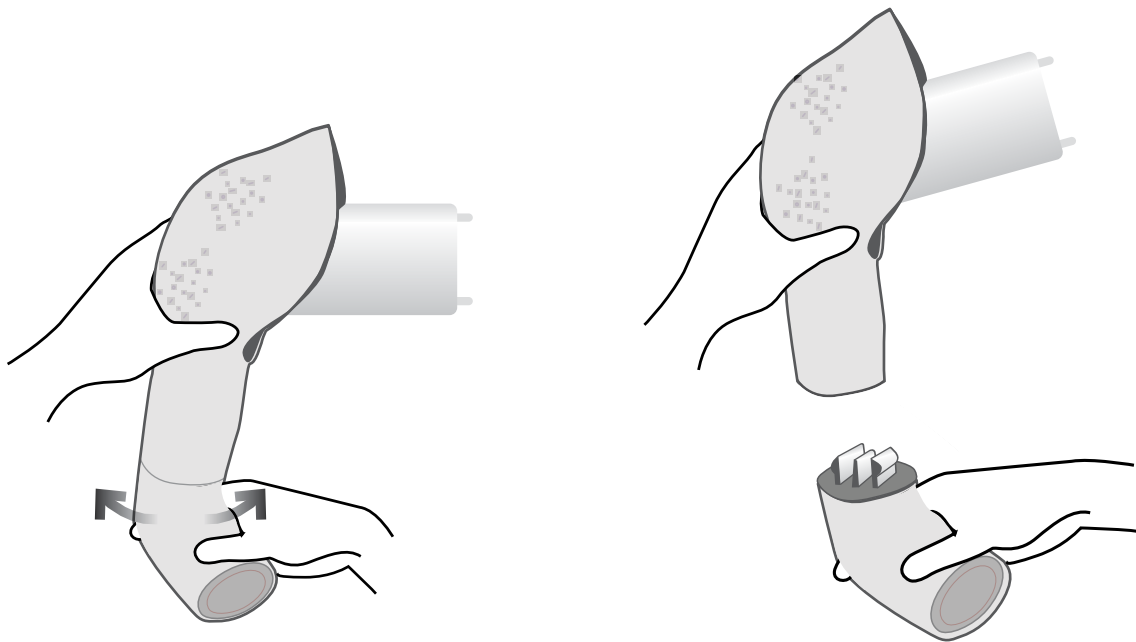


Always empty the joints for storage

1 Remove shoulder from torso



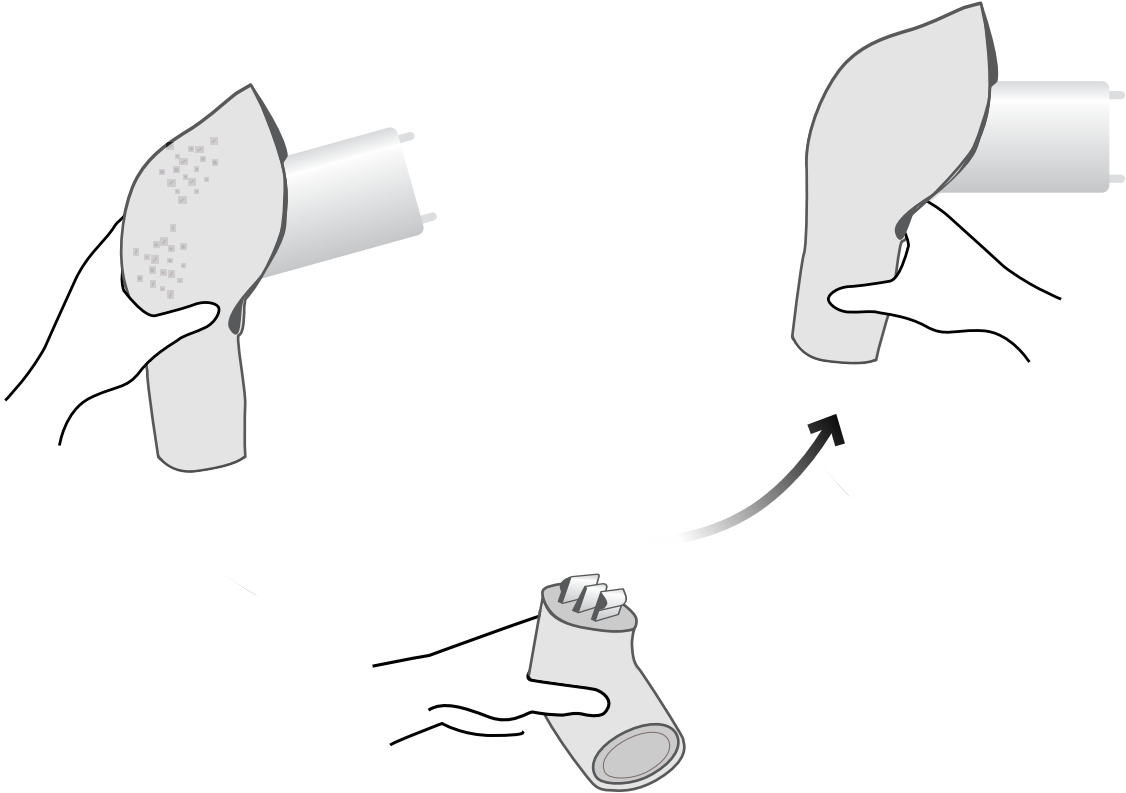
2 Remove the elbow



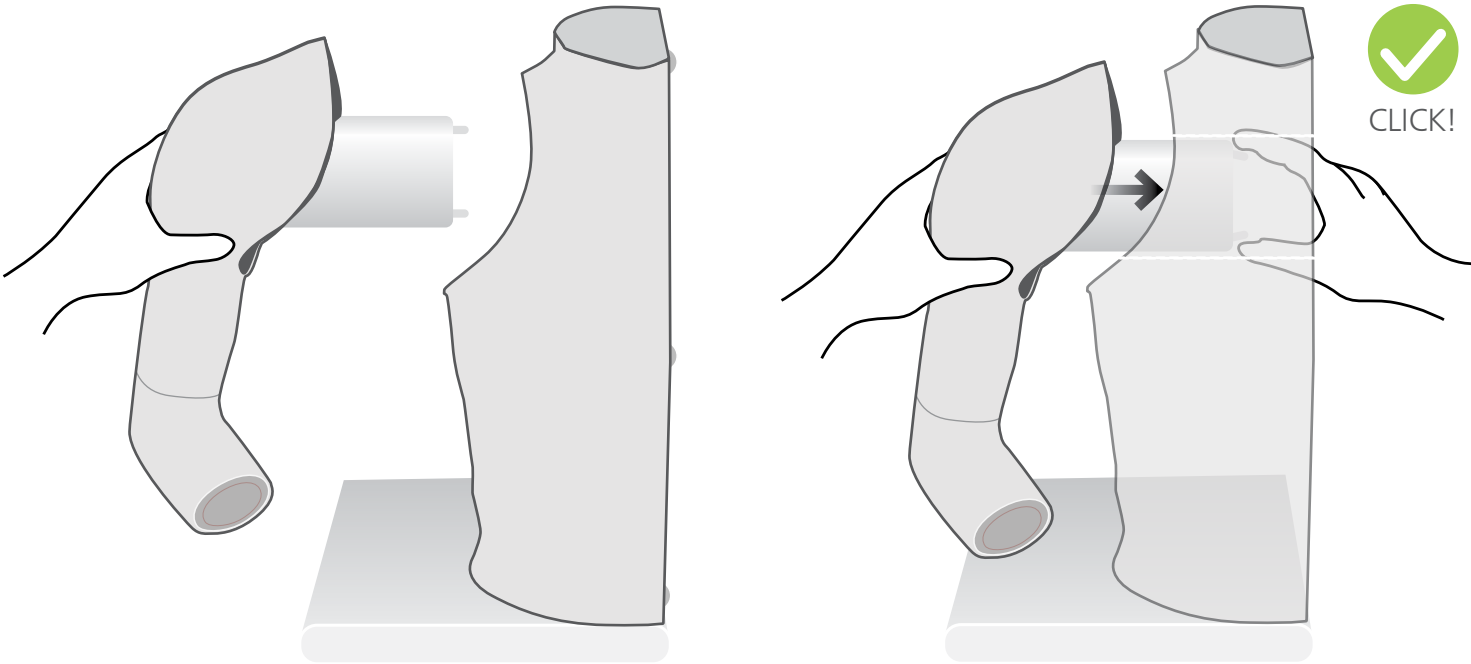
CARE & MAINTENANCE

REPLACING THE SHOULDER MODULE

3 Attach the elbow to new module



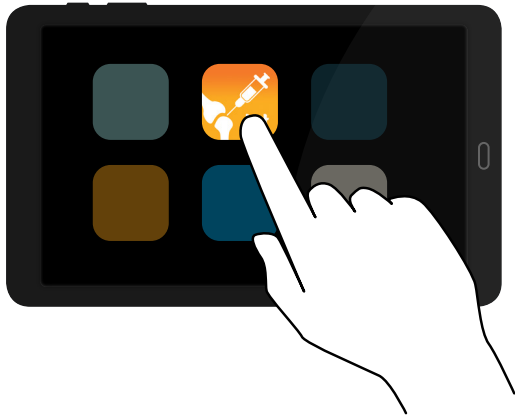
4 Mount shoulder into torso



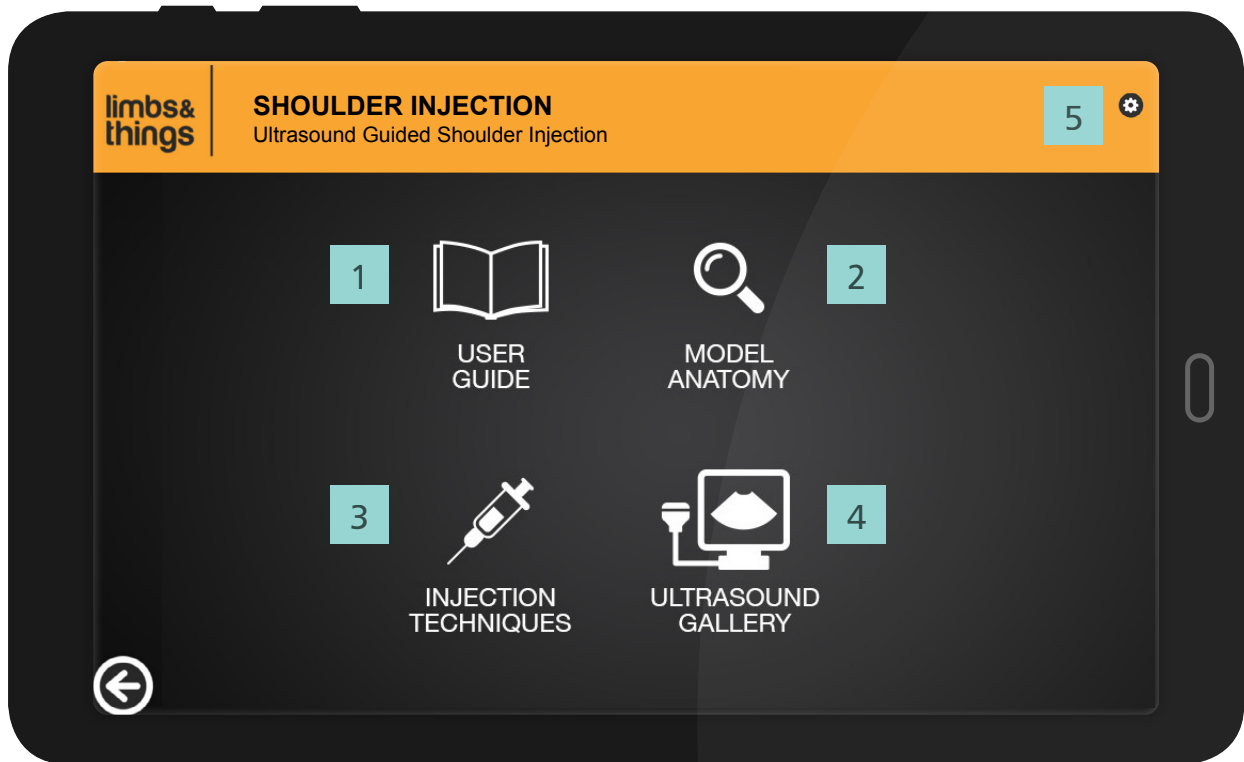
APP FEATURES

Companion App available as a free download on the Limbs & Things website

1 Open the Shoulder Injection App.



2 Select 'ULTRASOUND GUIDED'



1 USER GUIDE



2 MODEL ANATOMY



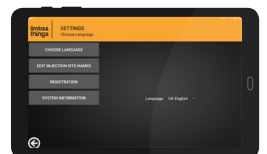
3 INJECTION TECHNIQUES



4 ULTRASOUND IMAGE GALLERY



5 APP SETTINGS



YOU MAY
ALSO BE
INTERESTED IN...

SONON
ULTRASOUND
IMAGING SYSTEM
LINEAR

HC300L



KNEE ASPIRATION &
INJECTION TRAINER
WITH ULTRASOUND
CAPABILITY

70103

70114

