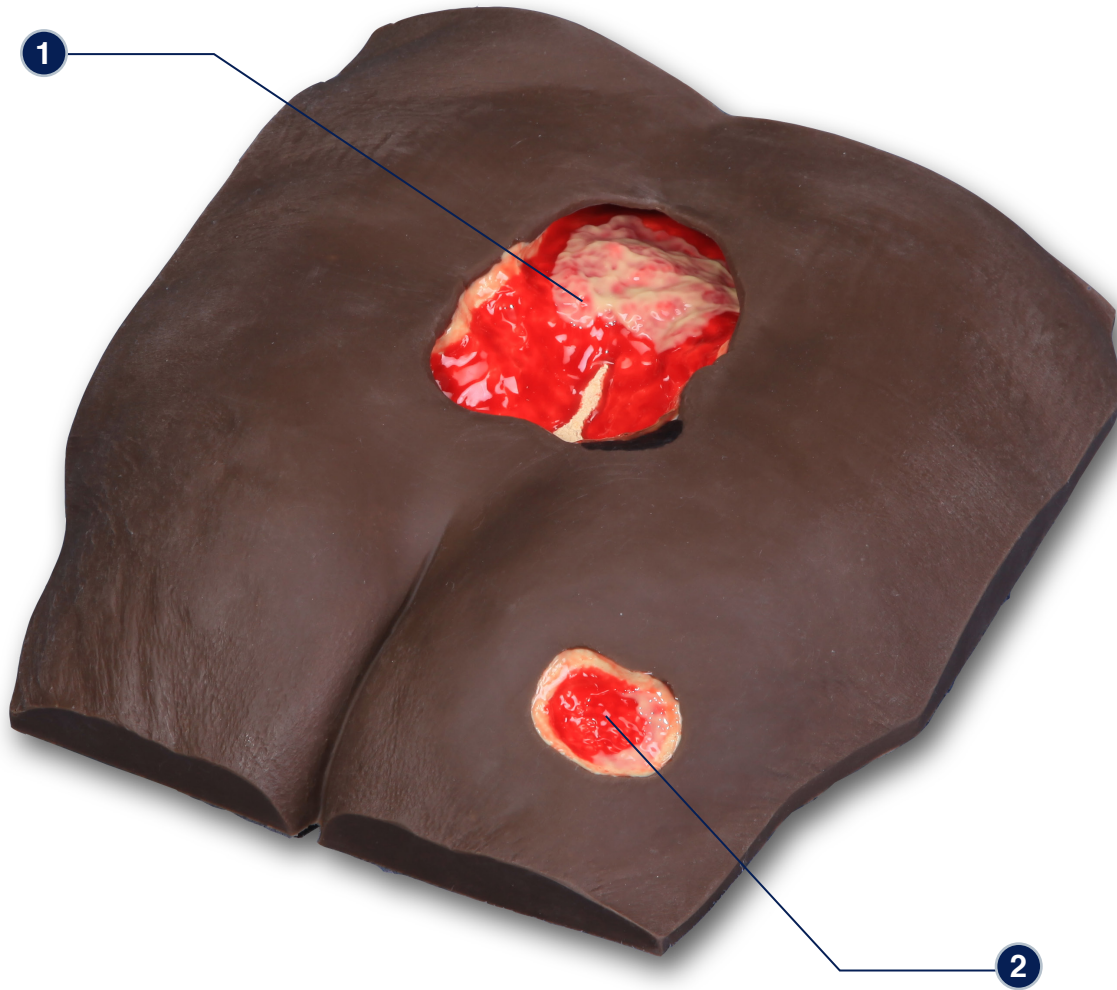


## Stan Stage 4 Pressure Injury Model™ Darkly Pigmented – 0975



### The following pressure injuries\* are presented on Stan Stage 4 Pressure Injury Model™

- 1 Stage 4 Pressure Injury with eschar, subcutaneous fat, undermining, tunneling, slough, exposed bone (with osteomyelitis) and rolled wound margins
- 2 Early\* Stage 3 Pressure Injury with subcutaneous fat and pale granulation tissue (Early\* as there is no wound contraction present)

\* We have included the most likely etiology-based descriptions, but realize many wounds can appear in the same location, having different etiologies. The definitive diagnosis is up to the clinician and interprofessional wound care team.

**Care Instructions:** To clean your model **VATA** recommends soap and warm water. Some customers have found applying a barrier/skin prep can give them the adhesion they are looking for.

