

limbs&
things

TRUCORP RANGE



Exclusive distributors of
TruCorp in the UK, US,
Canada & Australia



Learning has never been more lifelike

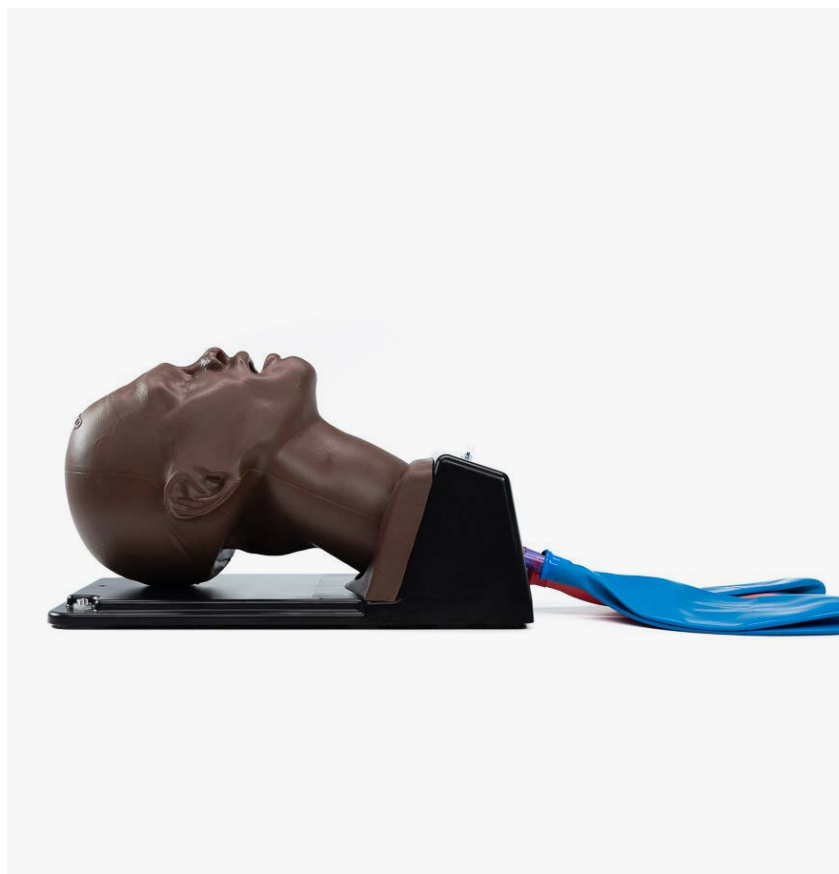
limbsandthings.com

AirSim Advance X

TCAA91100X**TCAA91100XDS**

AirSim Advance X features the uniquely constructed AirSim X airway and an anatomically correct nasal passage for visual accuracy and realistic feedback during airway management procedure practise.

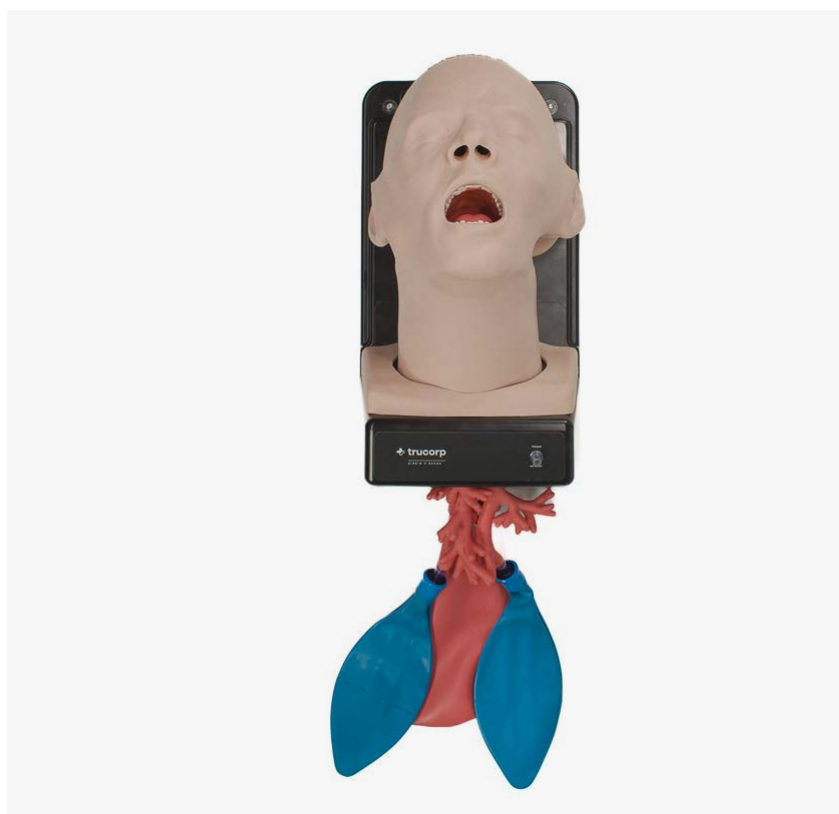
Durable and true-to-life airway is certified for over 20,000 intubation cycles and has a 5-year warranty. Silicone simulated skin covering offers a lifelike feel and more precise articulation during bag-valve mask ventilation training.



Airsim Advance Bronchi X

TCAA95100X**TCAA95100XDS**

This realistic model allows trainees to become familiar with the physical requirements of intubation and ventilation techniques. With the additional bronchioles, users can train in lung suction, and lung isolation techniques, including, bronchial blocker insertion, single and double endobronchial tubes, and specialised stents.



AirSim Combo X

TCCTC91100X

TCCTC91100XDS

The TruCorp AirSim Combo X manikin combines intubation and cricothyrotomy training in one life-like model.

The trainer fully supports percutaneous tracheostomies and needle and surgical cricothyroidotomies.

Palpable laryngeal inserts, an inflatable tongue, and improved, real-feel skin, give trainees of all abilities, realistic feedback during procedures.



Airsim Combo Bronchi X

TCCTC95100X

TCCTC95100XDS

With the addition of the bronchi, trainees are able to perform diagnostic bronchoscopies, use bronchial barrier devices to perform lung isolation, and practise suction pulmonary secretions.



COMPARE MODELS	AIRSIM ADVANCE X	AIRSIM ADVANCE BRONCHI X	AIRSIM COMBO X	AIRSIM COMBO BRONCHI X
Oral / Nasal Intubation	✓	✓	✓	✓
Bag Valve Mask Ventilation (BVM)	✓	✓	✓	✓
Supraglottic Device Insertion	✓	✓	✓	✓
Direct / Video Laryngoscopy	✓	✓	✓	✓
Bronchoscopy	×	✓	×	✓
Needle Cricothyroidotomy	×	×	✓	✓
Surgical Cricothyroidotomy	×	×	✓	✓
Percutaneous Tracheostomy	×	×	✓	✓
Nasogastric Tube Insertion	✓	✓	✓	✓

AirSim Difficult Airway

TCD A91100

TCD A91100DS



The AirSim Difficult Airway supports trainees' practise in a range of scenarios from straightforward to very difficult to intubate, facilitating training for both beginner & advanced users.

An innovative design allows the tongue, larynx, jaw, head rotation, and vocal chords to be uniquely adjusted to create different conditions.

QUALITIES

REALISM

- Easy identification of sternal notch, tracheal rings & cricoid and laryngeal cartilages

KEY FEATURES

- Interchangeable larynx allows quick and easy repeated use
- Wraparound replaceable neck skin rotates for 10-15 incisions
- All features can be activated quickly and effortlessly by the instructor to create a more challenging or easier experience. The features can be used in isolation or combined to deliver a scenario with numerous variations of difficulty

SKILLS

- Laryngospasm
 - Adjustable from normal to complete airway obstruction
 - Sudden closure of the vocal cords can be simulated
 - Upon successful user action, laryngospasm can be mechanically reversed to provide positive feedback
- Displaced larynx
 - Ability to displace the Larynx into a more anterior position to make visualisation of the vocal cords more challenging
 - Adjustable to provide various levels of difficulty
- Tongue Edema
 - The tongue can be swollen to simulate various degrees of tongue angioedema
- Receding / protruding Mandible
 - Various degrees of malocclusion, one mandibular variant and two maxillary variants
 - Overbite and underbite features simulated
- Trismus
 - Ability to grossly restrict mouth opening to make insertion of airway devices more challenging
- Neck lock / Head rotation restriction
 - Ability to simulate cervical arthropathy through restricting the range of motion of cervical spine neck lock / head rotation restriction

TruCric

TCTCRIC1

TCTCRIC1DS

The TruCric is ideal for practising emergency needle and surgical cricothyroidotomy techniques. The model also facilitates percutaneous tracheostomy procedures.

Anatomically accurate features including; tracheal rings, simulated cricoid, cricothyroid membrane and laryngeal cartilages help provide realistic training in front of neck access techniques.



AirSim Baby X

TCJR10001X

TCJR10001XDS

The AirSim Baby X, based on a 0 to 6-month-old, provides a realistic and anatomically correct paediatric manikin for airway management training. The manikin facilitates training in the use of bag/mask ventilation, supraglottic airway insertion and both naso and orotracheal intubation.

SKILLS

- Bag and mask ventilation techniques
- Full range of supraglottic devices
- Direct and video laryngoscopy
- Endotracheal tube insertion



AirSim Child Combo X

TCCC10006X

TCCC10006XDS

Ideal for practising oral and nasal intubation training techniques, percutaneous tracheostomy and emergency cricothyroidotomy on a 6-year-old child.

SKILLS

- Double nasotracheal intubation
- Needle and surgical cricothyroidotomy
- Percutaneous tracheostomy
- Oral and nasal intubation
- Laryngeal mask airway and supraglottic device insertion
- Combi tube insertion
- Fiberoptic intubation and video laryngoscopy
- Bag and mask ventilation techniques



Airsim Child Combo Bronchi X

TCAC50006X
TCAC50006XDS

This allows for a range of airway management training for all skill levels from beginner to advanced learners.

SKILLS

- Perform diagnostic bronchoscopies
- Use bronchial barrier devices to perform lung isolation
- Practise suction pulmonary secretion



AirSim Pierre Robin X

TCPR10000X
TCPR10000XDS

Developed in collaboration with clinicians from Children's Hospital Los Angeles, this model is an accurate representation of a 6-month-old paediatric patient with Pierre Robin Sequence.

The smaller lower jaw pushes the tongue further back in the mouth causing additional difficulty when intubation is required.

SKILLS

- Double nasotracheal intubation
- Orotracheal intubation
- Endotracheal tube insertion
- Bag valve mask (BVM) ventilation techniques
- Direct laryngoscopy
- Video laryngoscopy
- Full range of supraglottic device insertion



TruBaby X

TCTB10001

TCTB10001DS

Trubaby X provides a complete solution for paediatric clinical skills training. Incredibly lifelike, the TruBaby X is ideal for practising Directly Observed Practical Skills (DOPS), Paediatric Advanced Life Support (PALS) and critical emergency medicine including infant airway management, CPR, IV cannulation and lumbar puncture.

QUALITIES

ANATOMY

- Palpable vertebrae landmarks including the iliac crest for performing lumbar puncture
- Contains the dorsal venous arch, great and lesser saphenous veins allowing needle cannulation at various locations
- Realistic rib structures including xiphoid process, clavicle and sternum
- Palpable landmarks in the 2nd and 5th intercostal space
- Features the tibial tuberosity and patella anatomy which facilitates for the identification of the proximal tibia intraosseous needle insertion site

REALISM

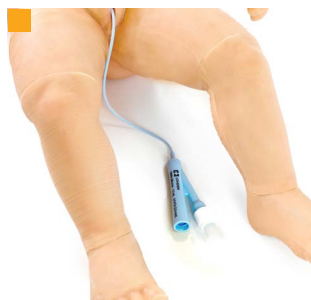
- Appearance, weight, size and movement of a 50th percentile 5-month-old infant
- Internal fluid flow for realistic blood flashback during IV cannulations

KEY FEATURES

- Features the AirSim X Airway which provides realistic and durable training and comes with a 5-year warranty
- Accurate needle placement allows for positive LOR response and collection of simulated cerebrospinal fluid (CSF) during lumbar puncture
- Audible hiss when needle is successfully inserted for needle thoracentesis
- Facilitates either the Seldinger chest drain insertion technique or the needle thoracentesis approach for the treatment of a pneumothorax

VERSATILITY

- Interchangeable male and female genitalia for urethral catheterisation
- The model has been designed as fully interchangeable, all the parts are cost effective and can be replaced quickly when required. Initial set-up time is less than 5 mins



- Airway Intubation
- IV cannula insertion
- Foley Urinary Catheterization
- Lumbar Puncture

SKILLS

- Airway management
- Peripheral Venous Cannulation
- Lumbar Puncture
- PICC line insertion
- Needle Thoracentesis and Chest Drain
- Urethral catheterisation (male and female)
- CPR
- IO Tibia

TruMan Trauma X

TCTB10001

TCTB10001DS



Able to simulate a range of emergency procedures, TruMan Trauma is ideal for training in advanced airway management skills for life threatening trauma situations including needle decompression, cricothyroidotomy, and chest tube insertion.

The anatomically correct adult male torso manikin incorporates TruCorp's signature AirSim X design for realistic airway management skills training.

QUALITIES

ANATOMY

- Adjustable head and neck mechanism with full tilt, chin lift and jaw thrust
- Larynx with cricoid landmarks, laryngeal cartilages and tracheal rings
- Tongue that can replicate various severities of tongue edema (via an inflation bulb)

REALISM

- Anatomically accurate oral and nasopharyngeal AirSim X airway
- Thoracic landmarks with realistic feel under palpation
- Inflatable tongue can be adjusted to simulate normal lingual tension, tongue edema, and anaphylactic reactions
- Realistic look and feel of tissues representing skin, fat and muscle
- Accurate representation of rise and fall during ventilation
- Audible hiss on successful needle insertion into 2nd and 5th intercostal spaces

KEY FEATURES

- **Cardiopulmonary resuscitation (CPR)** – full head tilt, chin lift and jaw thrust for airway preparation prior to resuscitation, life-like recoil during compressions
- **Cricothyroidotomy and tracheostomy** - palpable cricoid landmarks, laryngeal cartilages, and tracheal rings
- **Chest tube insertion** - surgical incision, blunt dissection, perforation of pleura and finger sweep
- **Needle decompression** - right and left tension pneumothorax at the 2nd and 5th intercostal space using a resuscitation bag

VERSATILITY

- Air can be introduced on either side of the torso to create a tension pneumothorax

TruTourniquet

TCTTQ1000

TCTTQ1000DS



TruTourniquet offers a realistic training model for massive haemorrhage control associated with traumatic amputation, suitable for any healthcare discipline that requires trauma training.

Representative of a right thigh amputation on an adult, TruTourniquet can be used to teach realistic haemorrhage control in the field, as well as controlled education scenarios.

SKILLS GAINED

- Techniques for applying various types of tourniquets
- Combat Application Tourniquet application

TruWound

TCTWO1000

TCTWO1000DS



TruWound simulator offers medical professionals a realistic way to train in wound packing techniques required for the care of severe bleeding in trauma patients.

Ideal for a fast-paced learning environment, its unique 3-wound set up can be used for individual or group training, to replicate traumatic wounds in Emergency Room scenarios.

Pressurised blood system allows for blood flow to be controlled to either 1, 2, or all 3 wounds at once.

SKILLS GAINED

- Wound packing procedures and techniques using haemostatic pads

TruPICC

TCTPIC100

TCTPIC100DS

TruPICC is an adult male training arm designed for effective training in ultrasound-guided PICC line and IV placement training, helping to develop skills associated with needle placement, guidewires and catheters using ultrasound.



SKILLS

Ultrasound-guided PICC Line Insertion

- Full catheter PICC Line placement and Seldinger techniques that allow full procedure with inserting introducer and dilator
- Realistic visualisation of the vascular anatomy of an arm including the brachial artery, and the brachial, cephalic, basilic and median cubital veins
- Upper chest features the superior vena cava to verify correct catheter placement using ultrasound

Intravenous (IV) Cannulation Techniques

- Realistic visualisation of the median cubital, brachial and basilic veins
- Differentiation between the basilic vein and the basilic artery

QUALITIES

ANATOMY

- Anatomically accurate vascular features including the brachial, cephalic, basilic and median cubital veins, and the brachial artery

REALISM

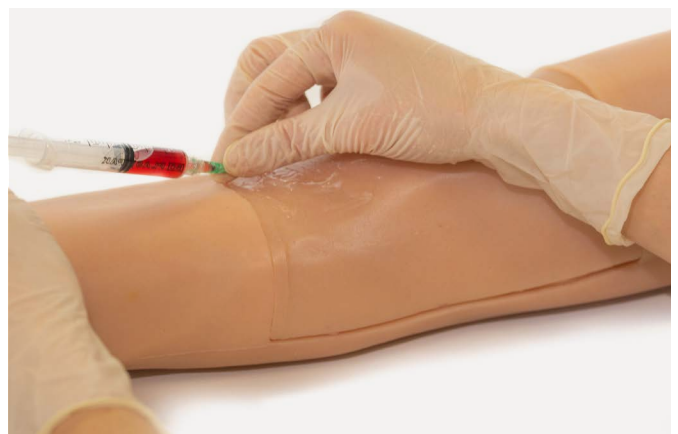
- Lifelike vascular 'tenting' upon successful entry into the vessels

KEY FEATURES

- Successful procedure verification: upper chest features superior vena cava to verify correct PICC catheter placement using ultrasound
- Can be set up in less than 5 minutes
- Self-regenerating TruUltra material reduces the appearance of needle tracks to facilitate repeat practise
- Easily transportable
- Compatible with all common ultrasound machine brands



PICC line Insertion



IV access

TruNerve Block

TCTNB110

TCTNB110DS



TruNerve Block is a 3-in-1 learning module designed for trainee anaesthetists to develop, practise and maintain the necessary skills to perform ultrasound-guided regional anaesthesia and vascular access procedures.

The model features a fractured bone structure, embedded vessels, and additional nerve bundles for regional anesthesia.

SKILLS

- Probe positioning and movement
- Recognition of arterial and vein vessels and nerves in soft responsive tissue
- Using ultrasound to target a nerve for ultrasound guided regional anaesthesia
- Ability to verify needle tip location and to practise the entire regional anaesthesia procedure
- Visualising of the artery and vein laterally beside the nerve
- Fracture assessment detection of a fracture and diagnosing bone stress injury

QUALITIES

ANATOMY

- Contains epidermal layer, two simulated vessels, a nerve bundle, a fractured bone and fascia layers

REALISM

- Realistic needle tip identification and artefact
- Realistic blood flashback upon entry into the vessel
- Real feel vascular 'tenting' upon entry into the vessel
- A unique fully integrated fluid management system to replicate blood flow

KEY FEATURES

- Positive fluid flow when vessels are accurately accessed
- 1000+ needle incisions with self-healing regenerating material
- Needle tracks disappear with very minimal damage to the material
- Colour doppler detection of blood flow

VERSATILITY

- Longitudinal and transverse anatomical viewing options
- High frequency linear array ultrasound probe can be used

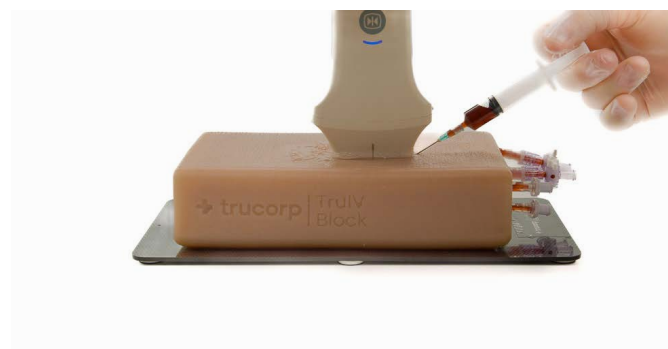
CLEANING & CARE

- Cleaning instructions can be found in the product user-guide

TruIV Block

TCTNB110

TCTNB110DS



TruIV Block is efficient and easy to set up, giving more time for learning IV cannulation skills and ultrasound techniques

Designed to represent a variety of patient types, it contains both superficial and deep veins at a range of diameters (4-8mm). It also features fascia layers for enhanced realism.

SKILLS

- Probe positioning and movement
- Identification of veins in soft responsive tissue
- Targeting veins for vascular access
- Ultrasound guided IV cannulation

QUALITIES

ANATOMY

IV block representing IV cannulation sites:

- 4 superficial veins
- 4 deep veins

REALISM

- 8 veins, superficial and deep
- Lifelike vascular tenting upon successful entry into a vessel
- Clear fascia layers

KEY FEATURES

- Longitudinal and transverse anatomical viewing options
- Supplied in a durable carry case for easy transportation and safe storage
- Suitable for use with all ultrasound machines



Limbs & Things are proud to be the exclusive distributor of TruCorp across the UK, USA, Canada, and Australia and are excited to help you find the perfect simulation for your needs.



TruCorp patient simulators provide healthcare professionals with realistic training in airway management and many other medical techniques.

TruCorp airway trainers have a long lifespan and easily replaceable parts, making them ideal for airway management training courses and airway device demonstrations.

Airway management trainers in the X range feature the AirSim X airway covered by a 5-year warranty.

Find the full TruCorp range at
www.limbsandthings.com/trucorp



REQUEST A QUOTE



REQUEST A DEMO



BUY ONLINE



CUSTOMER SUPPORT

UK V.1 October 2023

Limbs & Things

Sussex Street, Bristol, BS2 0RA, UK

E: gbsales@limbsandthings.com

T: +44 (0)117 311 0500

limbsandthings.com