



SINCE 1990

AUSTRALIA CATALOGUE 2026





Learning has never been more lifelike

Limbs & Things was founded after Medical Artist Margot Cooper discovered a gap in the learning journey of medical students who jumped straight from theory into practicing on animal flesh or patients. The need for a **safe and repeatable training** medium was evident, and so the vision for Limbs & Things was created.

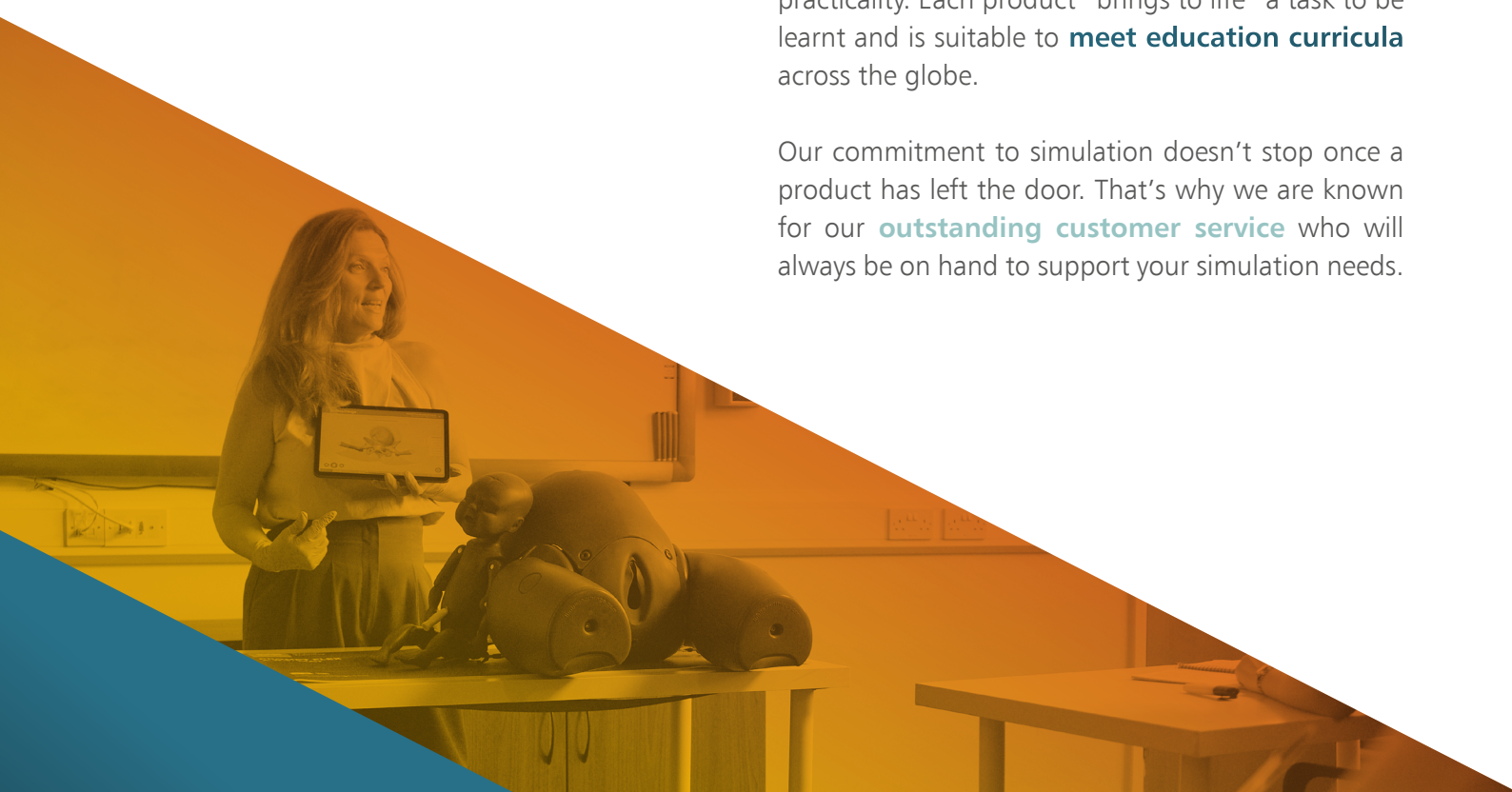
In 1990, Limbs & Things was born from a kitchen top in Bristol, England. Now a global business with offices in USA, Australia, and Sweden, the **family-owned** company still holds the same values and is proud to be supporting the learning of competent and confident clinicians around the world.



Our products are still **designed and manufactured in Bristol** before being exported to **70 countries worldwide**. Limbs & Things' committed team of experts collaborate with **medical leaders** to carefully create each groundbreaking innovation to achieve our mission.

Investing heavily in **research and development** ensures our models accurately replicate anatomy and feel lifelike to the touch, while utilising the best materials and technology to achieve realism and practicality. Each product "brings to life" a task to be learnt and is suitable to **meet education curricula** across the globe.

Our commitment to simulation doesn't stop once a product has left the door. That's why we are known for our **outstanding customer service** who will always be on hand to support your simulation needs.





“

Greetings from Limbs & Things,

We are pleased to feature some more results from the groundbreaking effort of all our talented members of staff as seen in our new Arterial Puncture Wrist model highlighted in this catalogue.

Limbs & Things was founded 35 years ago, but it feels like it was just yesterday when the expression was 'see one, do one, teach one'.

We feel proudly responsible for enabling medical trainees and practitioners to gain important skills and understanding of practical medical procedures, through 'hands on' use of the models, and we continue to strive for advancements in training through technology such as our Augmented Reality range.

Margot Cooper

Limbs & Things President

”



CONTENTS

WHAT'S NEW

NEWEST UPDATES FROM LIMBS & THINGS 5

PHYSICAL EXAMINATION

AUGMENTED REALITY (AR)	8
GENERAL PHYSICAL EXAMINATION	10
AUSCULTATION & CARDIOLOGY	11
ABDOMINAL EXAMINATION	12
FEMALE EXAMINATION	14
MALE EXAMINATION	18
OPHTHALMOLOGY	22
OTOLOGY	23

PROCEDURAL SKILLS

CATHETERISATION	24
DIAGNOSTIC PROCEDURES	26
CHEST TRAUMA MANAGEMENT	28
TRAUMA MANAGEMENT	29
AIRWAY MANAGEMENT	35
CENTRAL LINE MANAGEMENT	40
ARTERIAL PUNCTURE	42
VENEPUNCTURE	44
VENEPUNCTURE (PADS)	46
INJECTION TECHNIQUE	47
PATIENT CARE	47 & 49
PARACENTESIS	48

SPECIALIST SKILLS

BASIC SURGICAL SKILLS	51
MINOR SURGERY	53
OBSTETRICS & MIDWIFERY	56 & 66
GYNAECOLOGY	65
PAEDIATRICS	69
JOINT INJECTION	74
FRACTURES	79
WOUND CARE	80
LAPAROSCOPIC SURGERY	82

RANGES

UNDERGRADUATE MEDICINE	86
ATLS	87
NURSE TRAINING	88
PARAMEDIC TRAINING	89
OSCE TRAINING	90
PHYSICIAN ASSOCIATE	91
ADVANCED PRACTICE	92
CLINICAL ULTRASOUND	93
AUGMENTED REALITY (AR)	94

NEW Arterial Puncture Wrist

Designed for standardised and repeatable training, the Arterial Puncture Wrist supports confident performance at each stage of blood gas sampling, including line placement and using ultrasound to locate and access the artery.

Discover more on page 42.



NEW TruJunctional

Discover TruCorp's latest model which provides training for pelvic binding, junctional tourniquet placement, and the management of traumatic injuries.

Find out more on [Page 32](#).



NEW Smart TruMan Trauma Adult

Feedback driven trauma training on a wide range of key emergency skills including CPR and airway management on this versatile manikin.

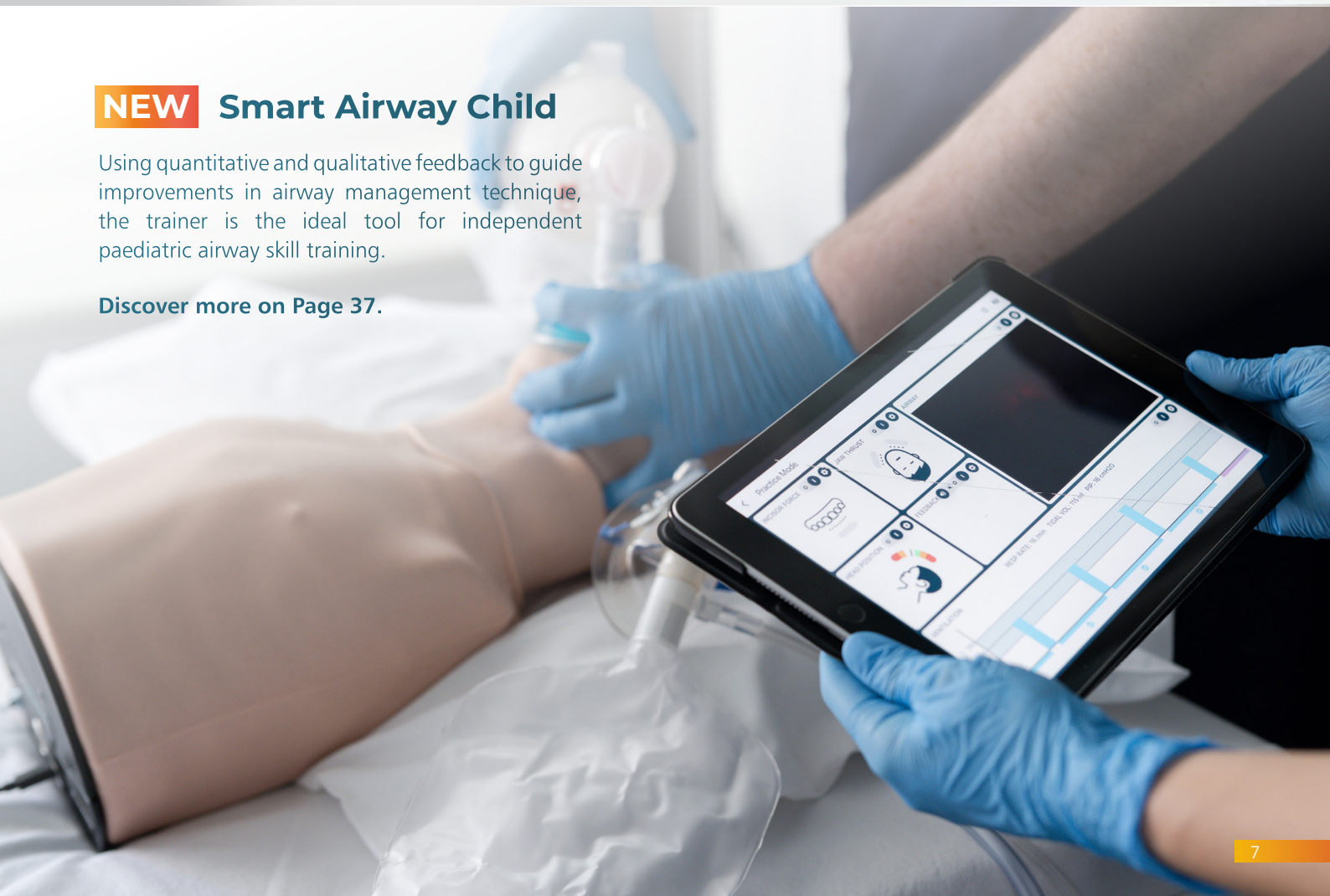
Find out more on [Page 30](#).



NEW Smart Airway Child

Using quantitative and qualitative feedback to guide improvements in airway management technique, the trainer is the ideal tool for independent paediatric airway skill training.

Discover more on [Page 37](#).





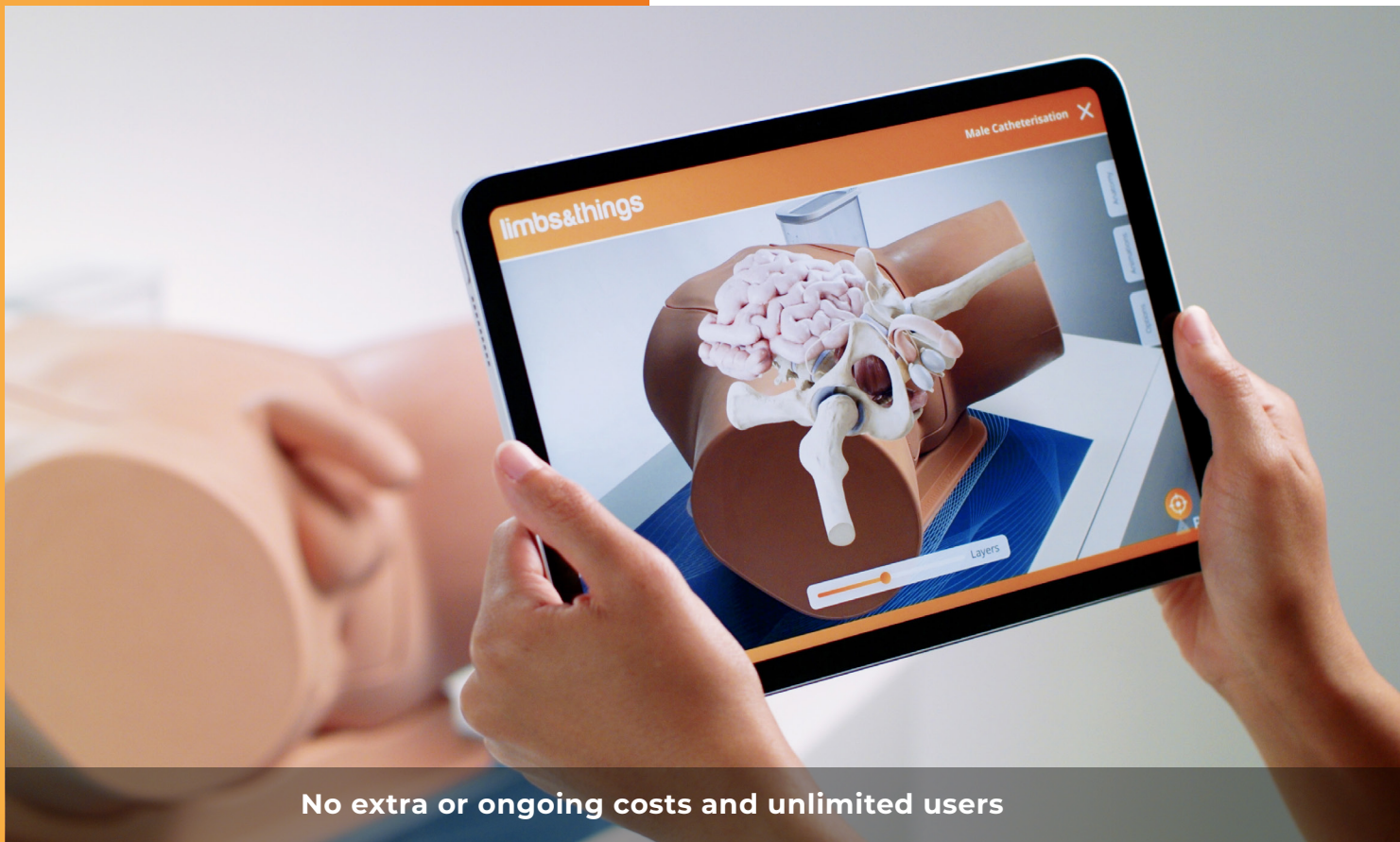
AUGMENTED REALITY

Interact with your trainer's internal anatomy on your smart device.

Add Augmented Reality to your training sessions.

By allowing learners to visualise anatomy, Augmented Reality (AR) bridges the knowledge gap between theory and practice.

AR makes engaging lessons easy. Multiple students can learn simultaneously using the app, while others get hands on with the trainer.

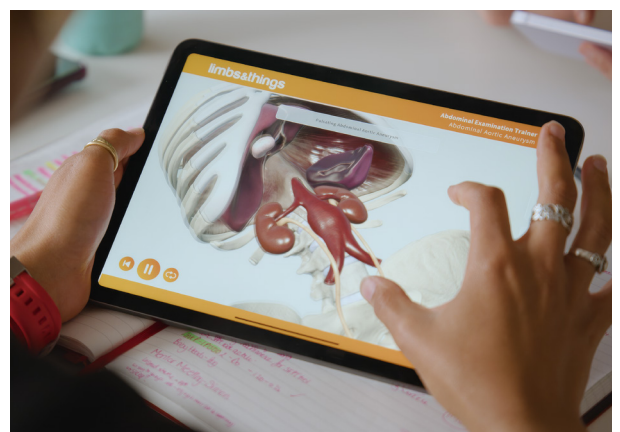


No extra or ongoing costs and unlimited users



With the trainer in class

Learners can use their own devices to view the internal anatomy



During independent study

Outside of class, students can continue learning using the same materials

AR unlocks different ways to learn

Keep the whole class engaged during training sessions

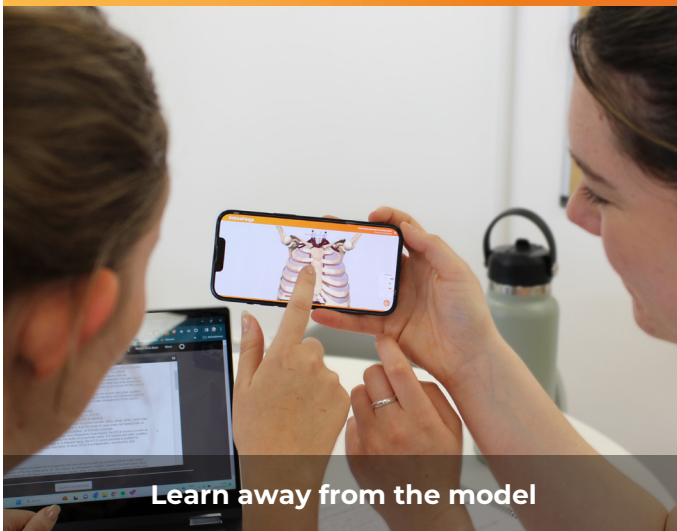


Combine with hands on training

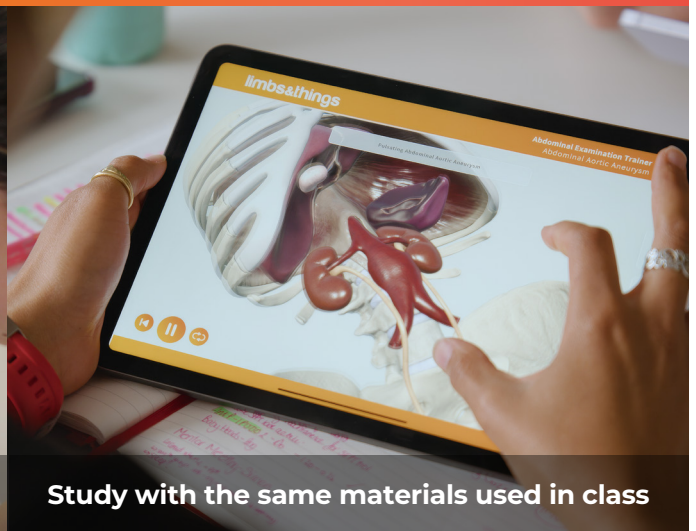


Multiple students at once

Continue learning outside the classroom



Learn away from the model



Study with the same materials used in class

FEATURES

- Interact with your trainer's internal anatomy
- Visualise procedures with animations
- Explore different pathological presentations

VERSATILITY

- Run engaging and memorable lessons
- Multiple students learning at once
- Continued learning away from the model

SPECIFICATIONS

- Included with compatible models
- No extra or ongoing costs
- Unlimited users



Find out more at limbsandthings.com

Visit the back page of the catalogue to download the AR app and start exploring now

CARDIOVASCULAR AND RESPIRATORY EXAMINATION (CaRE)

91000

91100



The CaRE (Cardiovascular and Respiratory Examination) Trainer teaches the key skills needed to carry out a cardiovascular or respiratory examination.

The CaRE Trainer has lifelike chest movement, apex beat, pulses, thrills & heaves. Along with 23 heart sound profiles and 10 lung sounds that can be listened to via the LimbPAD.

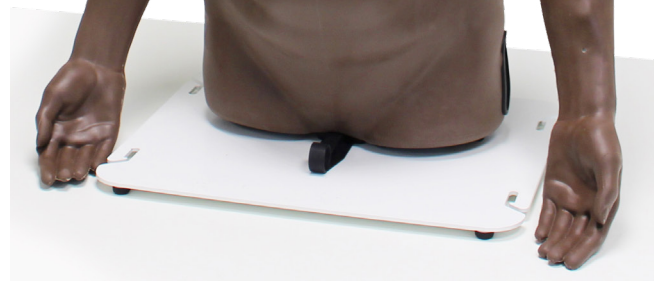
CaRE includes 31 clinical cases that range from common to complex pathologies. The clinical cases showcase the **Patented** technology with the pulses, lung & heart sounds, mouth sounds and chest movement all synchronising together. These features synchronising together allows the model to realistically represent a real patient.

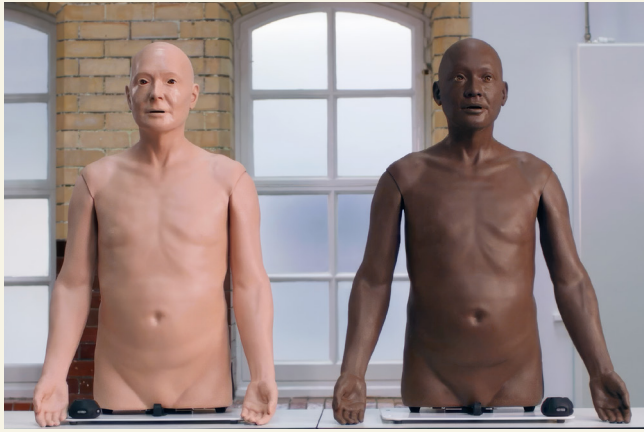
ANATOMY

- Anatomically correct auscultation & palpation sites
- Representative of a 55-65 year-old
- Attachable breasts with realistic feel
- Trachea with jugular notch
- Articulating arms

SKILLS

- Auscultation
- Palpation
- General patient inspection
- Clinical examination skills
- Diagnostics skills
- Tissue management





QUALITIES

KEY FEATURES

Pulses

- Realistic radial, femoral & carotid pulses with 6 different characteristics available at rates from 30 to 170 BPM

Apex beats

- Apex beats in both the normal & displaced location at varying pulse rates

Heaves

- Visible & palpable heaves

Thrills

- Palpable thrills over the 4 heart valves

Trachea

- Realistic feel of trachea & larynx with the ability to displace the trachea to the left & right

Auscultation

- Heart & lung sounds across chest & back
- 23 individual heart sounds
- Each heart sound includes 4 heart valve locations (aortic pulmonary, tricuspid & mitral valves)
- 10 individual lung sounds

Breathing

- Visible breathing with realistic symmetrical & asymmetrical chest rise & fall at variable rates, patterns, & depth.
- Realistic palpation of moving chest
- Mouth sounds

VERSATILITY

- Can be used upright, 45° or supine.
- LimbPAD can be connected to a speaker to play sounds out loud.
- Can be used in a classroom or clinical setting



WHAT'S INCLUDED

CaRE Torso
LimbPAD
Attachable Breasts
Base & Straps
Power Cord
USB C Cable

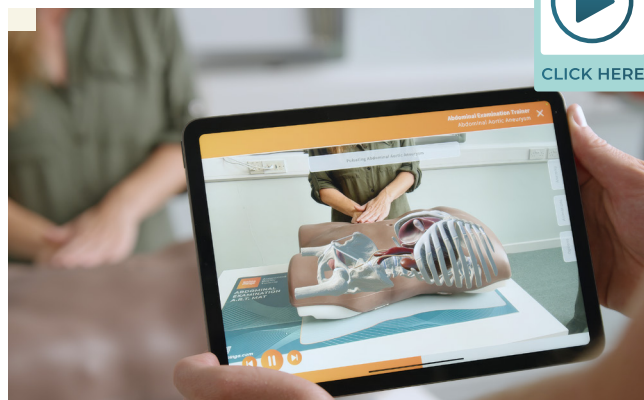
Abdominal Examination Trainer

60000

60054

An anatomically accurate adult torso, used to teach and practise the palpation, auscultation and percussion elements of abdominal or gastrointestinal (GI) examination.

With interchangeable organs of varying sizes, and an integrated MP3 player providing realistic sounds, the trainer provides the ability to recognise and differentiate a range of abnormal organs and pathologies.



CLICK HERE



SKILLS

- Familiarity with the abdominal regions & underlying anatomy
- Practice in abdominal palpation, auscultation & percussion
- Ability to differentiate normal from abnormal anatomy
- Identification of ascites, specifically shifting dullness & fluid thrill
- Identification of gaseous distension & bowel obstruction
- Ballottement of kidneys
- Professional-to-patient communication
- Increased understanding of internal anatomy & the effects of pathologies with AR



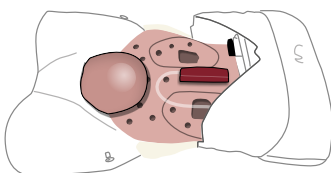
INCLUDES AUGMENTED REALITY

Discover the benefits on page 8

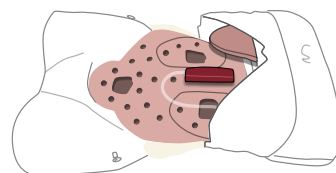
- No ongoing costs and unlimited users
- Bridge the learning gap between theory and practice
- Interact with internal structures to build understanding
- Visualise both male and female anatomy
- Understand organ and pathology presentations
- Multiple students learning at once
- Materials to learn with outside of the classroom

SET-UP EXAMPLES FOR SCENARIOS

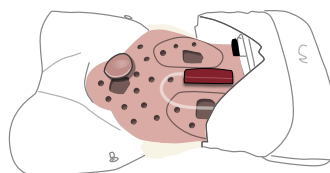
ACUTE URINARY
RETENTION - BLADDER



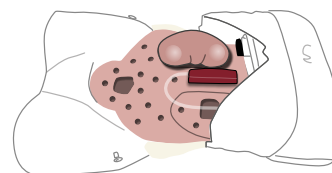
SLIGHTLY ENLARGED
LIVER



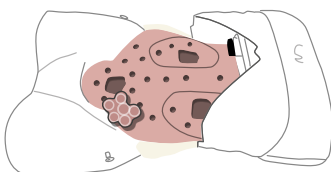
OVARIAN CYST - SMOOTH
SOFT MASS



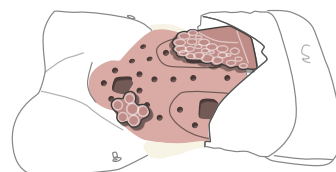
ENLARGED KIDNEY



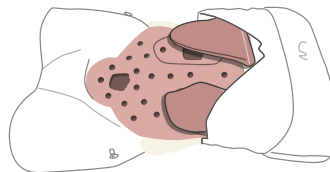
CARCINOMA ON MASS
IN LEFT ILIAC FOSSA



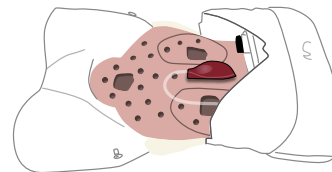
CARCINOMA WITH
LIVER METASTASIS

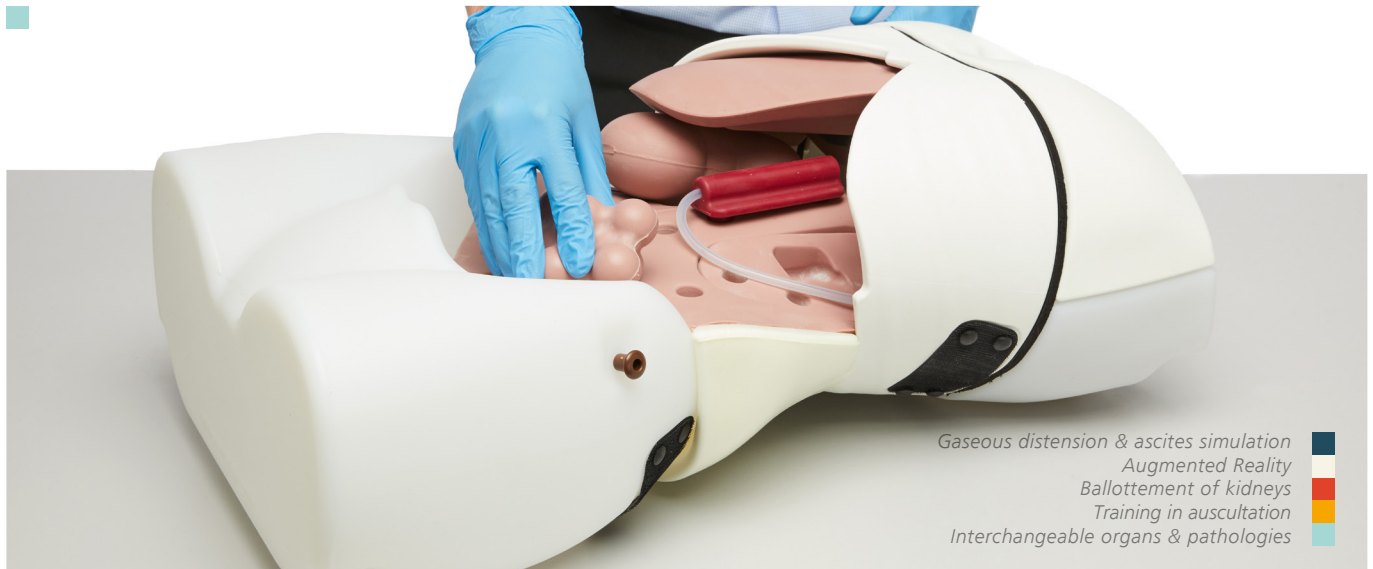


LYMPHOMA



AORTIC ANEURYSM





Gaseous distension & ascites simulation
Augmented Reality
Ballottement of kidneys
Training in auscultation
Interchangeable organs & pathologies

QUALITIES

REALISM

- Organs feel realistic on palpation & respond appropriately to percussion
- Lifelike quality of abdominal skin accommodates stretching for gaseous distension & ascites simulation
- Realistic ballottement of enlarged kidney

VERSATILITY

- Abdominal skin is simple to remove, allowing quick & easy changeover of organs
- Suitable for both bench top use & hybrid use with Simulated Patient
- Model can be rolled onto side for examination of ascites & shifting dullness

KEY FEATURES

- Interchangeable organs & pathologies of varying sizes can be quickly & easily inserted into the abdomen
- Trainer or Simulated Patient can vary respiratory movement of liver & spleen
- Integral amplifier & surface mounted MP3 player allow training in auscultation of normal & high-pitched or obstructed bowel sounds, renal & aortic bruits in variable locations
- Volume of bowel sounds can be adjusted and MP3 player allows for additional sounds to be loaded
- Distension set allows for the following:
 - Realistic checking for ascites using percussion, shifting dullness or fluid thrill technique
 - Simulation of bowel obstruction on percussion & auscultation
- Pulse bulb allows simulation of normal & aneurysmal aortic pulse

SAFETY

- Latex free

CLEANING & CARE

- Skin surface is washable using soap & water

ANATOMY

- Torso featuring abdomen, pelvis & lower part of thorax
- Bony landmarks include ribs, costal margin, xiphisternum, pubic crest & anterior superior iliac spines
- 3 Livers: slightly enlarged, enlarged with smooth edge & enlarged with irregular edge
- 2 Spleens: slightly enlarged & markedly enlarged
- 2 Enlarged Kidneys
- Distended Bladder
- 2 Aortas: normal & aneurysmal
- Set of 6 Abdominal Pathologies includes:
 - 4 Smooth masses: 2 sizes, each with hard & soft version
 - 2 Irregular hard masses
- Distension Set includes:
 - Ascites bag
 - Gaseous distension bag, pump & foam insert
- Simplified representation of lower thoracic & lumbar spine



Ideal for **OSCE** preparation and assessment.

WHAT'S INCLUDED

Abdominal Examination Base Unit
Abdominal Examination Skin
Abdominal Examination Rectus Bag
Abdominal Examination Organ Locator
Abdominal Wall
Abdominal Examination Livers (Set of 3)
Abdominal Examination Spleens (Set of 2)
Abdominal Examination Kidneys (x2)
Abdominal Examination Bladder
Abdominal Examination Pathologies (Set of 6)
Abdominal Examination Aorta (Set of 2)
Abdominal Examination - Distension Set
International 5V DC Power Supply
AA Batteries (x4)
Carry Case (x2)
Augmented Reality Mat

Clinical Female Pelvic Trainer (CFPT)

STANDARD

60900

60930



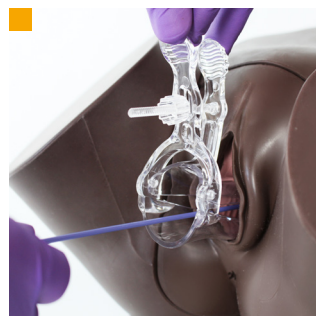
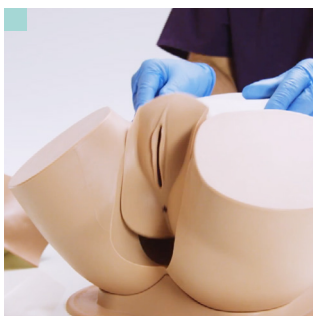
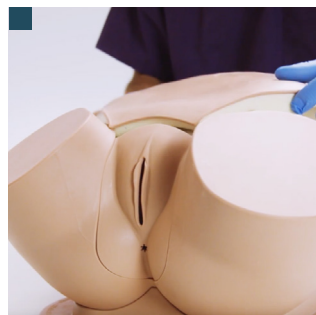
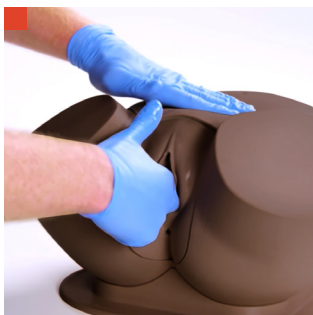
The CFPT is an anatomically accurate and tactile representation of the female pelvis. It is the ideal platform for hands-on examination as well as diagnosis of female conditions and minor pathologies. It can be used for many levels of training from undergraduate onwards, as well as in family medicine.



Validated in the
International Journal of Gynaecology and Obstetrics.
Volume 124, pp. 270-3, 2014.

SKILLS

- Recognition of perineal & pelvic anatomy including bony landmarks
- Digital vaginal examination
- Bi-manual examination
- Cervical smear procedure (including use of speculum)
- Digital rectal examination
- Professional-to-patient communication



Bi-manual examination
... allowing uterine module
to be lifted out

Abdominal wall lifts off...
Use of speculum
and cervical broom

QUALITIES

ANATOMY

- Abdomen, pelvis & genitalia
- Vagina, cervix, anus & lower bowel
- Advanced model comes with interchangeable uterine modules with different complications
- Modules:
 - Normal - Nulliparous Cervix
 - Large Fibroid - Nulliparous Ectropion Cervix
 - Small Fibroid - Nulliparous Polyp Cervix
 - Ovarian Cyst - Multiparous Cervix
 - Retroverted - Multiparous Cervix
 - 10-12 Weeks Pregnant
 - 14-16 Weeks Pregnant

REALISM

- Abdominal wall with fat layer makes palpation realistic
- Labia can be parted realistically
- Each uterus is presented at a realistic anatomical angle

KEY FEATURES

- Partial thighs aid anatomical orientation
- Soft and strong perineum and labia

VERSATILITY

- Modules can be changed quickly and easily

SAFETY

- Latex free

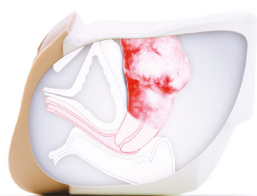
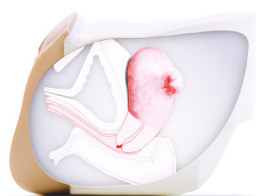
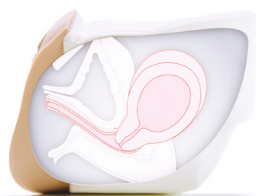
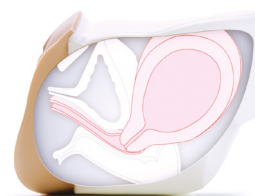
CLEANING & CARE

- Skin surface is washable using soap & water

ADVANCED

60905

60935

**60920 | 60937**MODULE 1
Normal - Nulliparous Cervix**60921 | 60938**MODULE 2
Large Fibroid - Nulliparous Ectropion Cervix**60922 | 60939**MODULE 3
Small Fibroid - Nulliparous Polyp Cervix**60923 | 60940**MODULE 4
Ovarian Cyst - Multiparous Cervix**60924 | 60941**MODULE 5
Retroverted - Multiparous Cervix**60925 | 60942**MODULE 6
10-12 Weeks Pregnant**60926 | 60943**MODULE 7
14-16 Weeks Pregnant

WHAT'S INCLUDED

STANDARD

ADVANCED

CFPT Abdominal Insert	✓	✓
CFPT Module 1: Normal - Nulliparous Cervix	✓	✓
CFPT Module 2: Large Fibroid - Nulliparous Ectropion Cervix	×	✓
CFPT Module 3: Small Fibroid - Nulliparous Polyp Cervix	×	✓
CFPT Module 4: Ovarian Cyst - Multiparous Cervix	×	✓
CFPT Module 5: Retroverted - Multiparous Cervix	×	✓
CFPT Module 6: 10-12 Weeks Pregnant	×	✓
CFPT Module 7: 14-16 Weeks Pregnant	×	✓
Lower Torso	✓	✓
Base	✓	✓
Tube of Aqueous Gel	✓	✓
Carry Case	✓	✓(x2)

Patents granted: • US6336812 • EP099027 • DE69804793 • CA 2293585 • ZL98806331 • HK1023832 • 755575 Australia

Breast Examination Trainer - Advanced & Standard

ADVANCED

40201

41201

STANDARD

40200

41200



Our Breast Examination Trainer provides a highly realistic learning platform for acquiring the skills required to perform Clinical Breast Examination (CBE).

Featuring 6 readily interchangeable and multi-positional pathologies, providing healthcare professionals with the tools to identify various complications and pathologies, including carcinomas, cysts, fibrocystic disease and fibroadenoma.



Both *Simulated Patient* and *Bench Top* training can be used in alignment with healthcare professionals promoting best practice techniques to trainees and patients, or for any undergraduate programmes running **OSCEs**.



This product was developed in close collaboration with leading clinicians:

- Mr Peter Donnelly, Torbay Hospital, UK
- Clinical Skills Resources Centre, University of Liverpool, UK
- Clinical Practice Centre, St James's University Hospital, Leeds, UK

QUALITIES

ANATOMY

- Realistic soft tissue & breast anatomy
- Pathologies supplied: carcinomas (2cm, 3cm, 5cm), cyst, fibrocystic disease, fibroadenoma

REALISM

- Soft tissue looks & feels realistic
- Clavicular & axilla pads for accurate lymph node placement

KEY FEATURES

- Pathologies can be placed in various location points & are easily changeable
- Dual purpose product: bench top & Simulated Patient
- Hard torso available for bench top use

VERSATILITY

- Comfortable to wear for long periods of time during OSCEs & assessments

SAFETY

- Latex free

CLEANING & CARE

- Skin surface is washable using soap & water

Patents granted:

• US6336812 • EP099027 • DE69804793 • CA 2293585
• ZL98806331 • HK1023832 • 755575 Australia



- Soft tissue looks & feels realistic
- Self Breast Examination training
- Pathologies fit securely into supports
- Clavicular & axilla pads for accurate lymph node placement

SKILLS

- Clinical Breast Examination (CBE)
- Self-Breast Examination (SBE)
- Identification of anatomical landmarks
- Identification of lymph nodes (axillary, supra & infraclavicular)
- Diagnosis of pathologies
- Professional-to-patient communication

OPTIONAL EXTRAS

40209 Medium Carry Case

WHAT'S INCLUDED

	ADVANCED	STANDARD
Wearable Examination Breasts	✓	✓
Pathologies	✓	✓
Breast Examination Inserts	✓	✓
Breast Pathologies Supports	✓	✓
Breast Back Plates	✓	✓
Breast Examination Torso	✓	✓
Lymph Node Pads & Lymph Nodes	✓	x

Ultrasound-Guided Breast Biopsy Phantom

KKUS-9

Develop ultrasound-led needle biopsy skills step-by-step with these 2 breast models. Trainees can develop ultrasound image reading skills and practice accurate needle biopsy. Start with developing coordination and visualization on the transparent breast, and progress to full needle biopsy procedure on the opaque breast model.

SKILLS

- Visualisation of the targets and needle journey
- Tissue sampling under ultrasound guidance
- Needle biopsy under ultrasound guidance
 - Fine needle aspiration biopsy
 - Core needle biopsy
 - Mammotome biopsy
- Hand-eye coordination



QUALITIES

KEY FEATURES

- Targets are embedded in 3 layers to provide opportunities of working with a variety of needle paths
- Breast phantom tissue accurately represents softness and resistance of the mammary gland
- Excellent ultrasound image quality
- Targets are coloured to confirm successful sampling

Male Rectal Examination Trainer - Standard & Advanced

STANDARD

60170

60186

ADVANCED

60171

60187



The Rectal Examination Trainer offers realistic, repeatable training in the core skill of digital rectal or PR examination.

Both models include a contractible anal sphincter, allowing for anal tone assessment and a faecal impaction clip in module.



The **Standard** model focuses on learning core rectal nursing procedures and excludes any pathologies.

The **Advanced** model comes with a range of prostates and 2 perineums, allowing trainees to become familiar with normal and abnormal findings and acquire key diagnostic skills. External ano-rectal illustrations are ideal for incorporation into scenarios and **OSCE** assessments.

SKILLS

- Digital examination of the anus, rectum & prostate
- Assessment of anal tone
- Identification of impacted faecal matter in the rectum
- Identification of external anorectal conditions**
- Professional-to-patient communication
- Insertion of rectal medication (micro enemas, suppositories)

QUALITIES

** Advanced model

ANATOMY

- *Improved model enhances the realistic feel & durability of trainer
- Buttocks, anus, rectum, prostate & perineum
- Pathological perineum – with polyp & rectal cancer**
- 4 abnormal prostates**:
- Benign unilateral enlarged
- Benign bilateral enlarged
- Unilateral carcinoma
- Bilateral carcinoma

REALISM

- Soft, partible buttocks
- Realistic anus with resting tone & ability to contract

KEY FEATURES

- Interchangeable prostates can be quickly & easily inserted, out of sight of the trainee**
- Addition of impacted faecal matter allows trainees to recognise & distinguish this common finding
- Simulation of sphincter contraction allows trainees to assess anal tone
- Left lateral positioning
- Teaching aid pack featuring high-quality illustrations of nine external anal conditions**

VERSATILITY

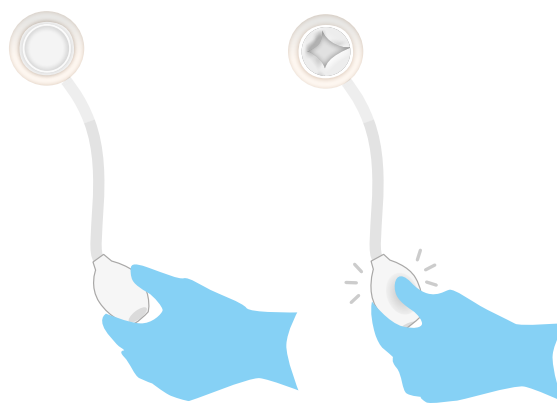
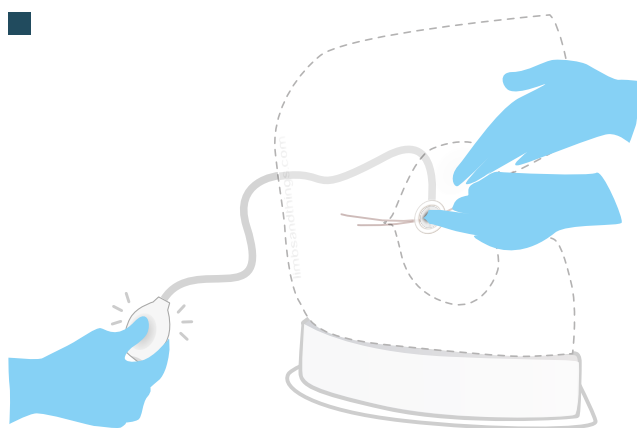
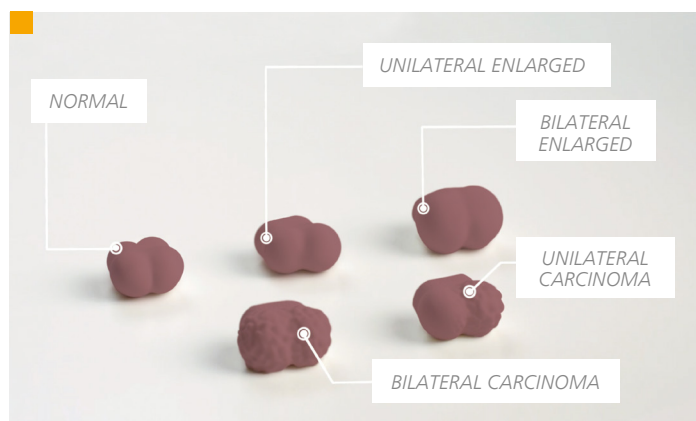
- Trainer can also be presented in 'semi-standing' position using the optional **Standing Position Stand (60172)**

SAFETY

- Latex free

CLEANING & CARE

- Skin surface is washable using soap & water



- External conditions illustration pack
- Range of prostates
- Anal tone assessment

WHAT'S INCLUDED

STANDARD

ADVANCED

Base Unit	✓	✓
Left Lateral Stand	✓	✓
Normal Perineum with Anal Tone	✓	✓
Pathological Perineum with Anal tone	x	✓
Normal Prostate	✓	✓
Benign Unilateral Enlarged Prostate	x	✓
Benign Bilateral Enlarged Prostate	x	✓
Unilateral Carcinoma Prostate	x	✓
Bilateral Carcinoma Prostate	x	✓
Impacted Faecal Matter	✓	✓
External Conditions Illustration Pack	x	✓
Water-based Lubricant	✓	✓

OPTIONAL EXTRAS

- 60172 Standing Position Stand
- 40209 Medium Carry Case
- 60185 / 60192 Upgrade from Standard Model

Clinical Male Pelvic Trainer (CMPT)

STANDARD



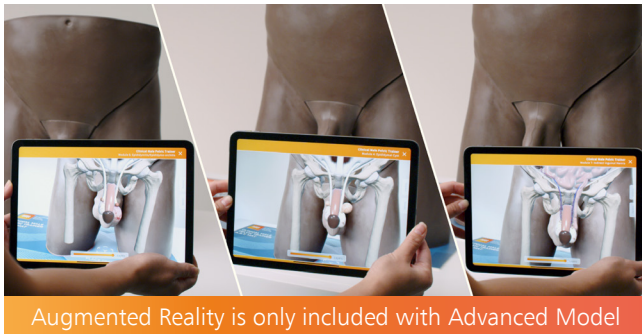
60950

60964



An ideal platform for teaching and learning hands-on male pelvic examination and diagnosis.

The user-friendly design, combined with clear anatomic landmarks, and a range of male conditions and pathologies creates a realistic training experience for students across all levels of healthcare education from undergraduate level upwards.



Augmented Reality is only included with Advanced Model

Validated in the *Journal of Surgical Education*
Volume 74, Issue 3, May–June 2017.

Developed in collaboration with:

- The Clinical Skills Resource Centre, University of Liverpool, UK
- Imperial College, London, UK
- Guy's Hospital, London, UK
- Southmead Hospital, Bristol, UK
- University of Southampton, UK

SKILLS

- Correct examination procedure of male pelvis
- Examination & evaluation of:
 - Normal anatomy
 - Testicular abnormalities
 - Abdominal & pelvic pain
- Dry catheterisation
- Professional-to-patient communication



Realistic training experience
Penile cancer

Pelvic examination, supine position
Diagnosis of pathologies

QUALITIES

ANATOMY

- Abdomen, pelvis & genitalia

Anatomy of the groin with clear anatomical landmarks:

- Anterior Superior Iliac Spine (ASIS)
- Pubic symphysis & tubercle

Genitalia includes:

- Penis with urethra
- 2 foreskins (to demonstrate circumcised & uncircumcised)
- Scrotum (containing testicles with epididymis & vas deferens)

Pathologies (Advanced model only):

- Varicocele
- Testicular tumour & penile cancer
- Epididymal cyst
- Hydrocele
- Orchitis/Epididymo-orchitis
- Indirect inguinal hernia

REALISM

- Soft tissue genitals & abdominal wall
- Accurate representation of internal anatomy & pathologies on the Augmented Reality app

VERSATILITY

Soft tissue inserts can be removed & replaced

KEY FEATURES

- Visualise underlying conditions with Augmented Reality

SAFETY

- Internal fabrication of modules 5 & 7 contain latex.

CLEANING & CARE

- Skin surface is washable using soap & water

ADVANCED

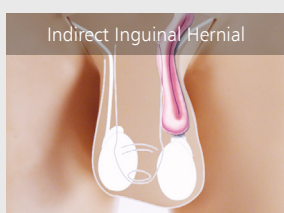
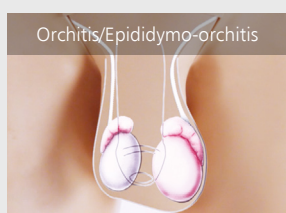
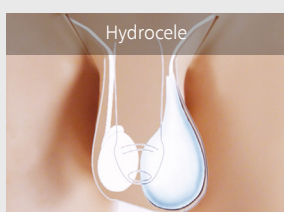
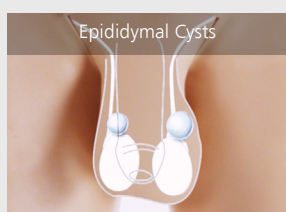
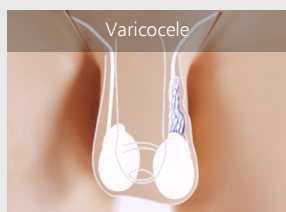
60951

60965



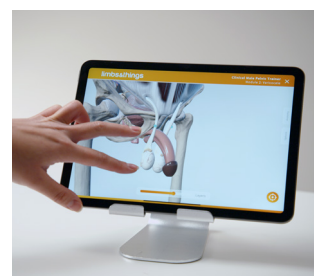
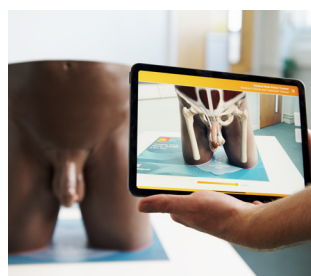
This model includes Augmented Reality

Modules included with the Advanced Model

COMPATIBLE WITH
AUGMENTED REALITY

Discover the benefits on page 8

- No ongoing costs and unlimited users
- Bridge the learning gap between theory and practice
- Interact with internal anatomy to build understanding
- Visualise the effects of different pathologies
- Multiple students learning at once
- Materials to learn with outside of the classroom



WHAT'S INCLUDED

STANDARD

ADVANCED

CMPT Module 1: Normal	✓	✓
CMPT Module 2: Varicocele	×	✓
CMPT Module 3: Testicular Tumour & Penile Cancer	×	✓
CMPT Module 4: Epididymal Cysts	×	✓
CMPT Module 5: Hydrocele	×	✓
CMPT Module 6: Orchitis/Epididymo-orchitis	×	✓
CMPT Module 7: Indirect Inguinal Hernia	×	✓
CMPT Abdominal Insert	✓	✓
CMPT Pubic Bone	✓	✓(x2)
CMPT Foreskins Pack (each pack contains 2 foreskins & 3 lubricant sachets)	✓	✓(x2 pks)
Lower Torso	✓	✓
Support Base	✓	✓
LED Pen Torch	×	✓
Carry Case	✓	✓(x2)
Augmented Reality Mat	×	✓

Patents granted: • US6336812 • EP099027 • DE69804793 • CA 2293585 • ZL98806331 • HK1023832 • 755575 Australia

Eye Examination Trainers

Eye Examination Trainers are dependable training tools for teaching and practising the use of an ophthalmoscope, examining the ocular fundus, and learning and identifying diseases and conditions within the eye.

Eye Examination Simulator

KKM82

KKM82M

KKM82D



KEY FEATURES

- 10 fundal slides feature real clinical images
- Adjustable dilation 3 steps (2.0mm, 3.5mm, 5.0mm), visual axis & depth of fundus slides allow for different degrees of challenge
- Soft & supple material making for realistic eyelid raising.
- Red reflex detectable during examination
- A study guide, covering the cases depicted on the slides, is included to assist in self-study

EYE EXAMINATOR SIMULATOR

STANDARD 10 CASES

- Normal eye-ground
- Hypertensive retinopathy: arteriolar vasoconstriction grade 3, arteriolosclerosis grade 1, haemorrhages & cotton wool spots, simple vein concealment
- Simple/background diabetic retinopathy: microaneurysm, haemorrhages & hard exudates
- Papilloedema (chronic & acute sphase)
- Glaucomatous optic atrophy: glaucomatous optic disc cupping & nerve fiber defect
- Retinal vein occlusion (acute phase & after retinal laser photocoagulation)
- Toxoplasmosis: retinochoroiditis
- Age-related macular degeneration
- 3 types of enlarged optic disc recess

 **KYOTO KAGAKU**

SKILLS

- Correct use with all types of direct ophthalmoscope (not supplied)
 - Right eye to right eye
 - Adjustment of focus (3 steps)
 - Visualisation of fundus reflection
- Differentiation of pathologies
- Communication skills

Digital Eye Examination Simulator

KKMW61

KKMW61M

KKMW61D



KEY FEATURES

- 40 pre-installed authentic fundus cases
- Custom fundus images can be programmed via USB
- Adjustable dilation 2 steps (3.5mm, 5.0mm)
- Soft & supple material making for realistic eyelid raising
- Monitor is 160dpi high resolution

DIGITAL EYE EXAMINATOR SIMULATOR -

ENHANCED 40 CASES

- Includes all 10 fundus cases found with Eye Exam Simulator (KKM82)
- Normal eye-ground with enlarged optic disc recess with drusen type 2
- Optic disc haemorrhage
- Haemorrhage
- Choriorretinal atrophy types 1, 2 & 3
- 4 types of vitreous clouding
- 2 types of retinal nerve fibre layer defect
- Pigmentation
- Haemorrhage with vascular white sheath
- Photocoagulation spots
- 3 types of epiretinal membrane
- Customised fundus cases can be programmed into the simulator via a USB

Ear Examination Simulator II

KKMW12

KKMW12M

KKMW12D



QUALITIES

ANATOMY

- Head, neck & shoulders
- Anatomically correct soft ear model with external acoustic meatus & tympanic membrane

REALISM

- Ear model allows training in straightening the auditory canal by pulling the auricle
- The neck can be tilted to allow proper head positioning

KEY FEATURES

- Warning against painful insertion, with or without beep
- 9 major clinical cases are prepared:
 - Normal
 - Serous otitis media (SOM)
 - Mucoïd otitis media (MOM)
 - Chronic otitis media with perforation
 - Acute suppurative otitis media (AOM)
 - Cholesteatoma
 - Tympanosclerosis
 - Traumatic perforations
 - Cerumen block
- Foreign body removal set supplied. Includes simulated earwax, small toys & small sponge fragments

VERSATILITY

- Examination possible on both left & right ears
- Suitable for use with all otoscopes
- 4 matching sets of right & left ears
- 2 sizes of ear canal for all cases
- Cases can be switched over easily by using the dial on the back of the mode

SAFETY

- Latex free

KYOTO KAGAKU

A life-size model of the ear including external acoustic meatus and tympanic membrane, for training in examination of the ear with an otoscope and foreign body removal.

The model offers two modes of use:

- Instructor mode: particularly useful for OSCE or skills examination scenarios, allowing instructors to guide and evaluate students' proficiency in ear examination techniques and ability to identify different pathologies.
- Self-learning mode: enables and empowers independent learners to practice and refine their skills at their own pace.

The model warns against painful insertion into the ear by beeping and/or displaying a warning light to the assessor.

A yellow light indicates when the tip of the otoscope reaches the bony part of the ear canal, and a red light indicates when it touches the eardrum.

SKILLS

- Ear examination with an authentic otoscope of your choice (not supplied)
- Diagnosis of up to 9 cases
- Earwax and foreign body removal



- Examination of the ear with an otoscope
- Head can be tilted to allow for proper positioning
- Foreign body removal can be practised
- Red light comes on when otoscope touches eardrum

WHAT'S INCLUDED

Manikin Head & Shoulders

4 Pairs of Ear Units:

- Examination Ear (Normal)
- Examination Ear (Stenosis)
- Foreign Body Ear (Normal)
- Foreign Body Ear (Stenosis)

Foreign Body Removal Kit

Carry Case

CATHETERISATION TRAINER RANGE



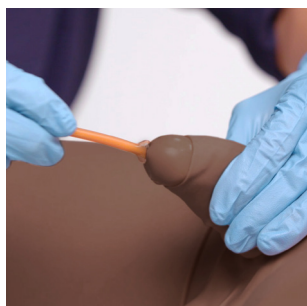
The Catheterisation Range facilitates the teaching of urethral and suprapubic catheterisation across all levels of training.

Interchangeable modules allow practice of the fundamental procedures of male and female urethral catheterisation, as well as more advance skills of

suprapubic management and ultrasound guided insertion.

The anatomically accurate trainers include a supple urethra and resistant sphincter providing a closer to life training experience.

Male Catheterisation Trainer



60850

60870

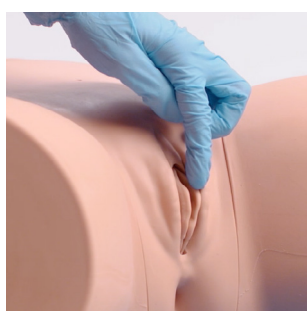
The male trainer has soft and lifelike genitalia to enhance the realistic experience of catheter insertion.

Retractable and removable foreskin.

This model includes Augmented Reality



Female Catheterisation Trainer



60851

60869

The female trainer has soft labia allowing trainees to practice parting using the aseptic non-touch technique, as well as suprapubic catheter management and care via the pre-ported bung.

This model includes Augmented Reality



Suprapubic Insertion Unit



60852

60873

Optional module, designed for advanced skills training, allowing trainees to master ultrasound guided suprapubic catheterisation insertion.

Fits into the pelvic shell and stand.



SKILLS

- Correct handling of male & female anatomy
- Aseptic catheterisation technique
- Withdrawal of catheter
- Urinary catheterisation
- Suprapubic catheter management - female module
- Suprapubic catheter insertion (blind & ultrasound-guided)*
- Ultrasound bladder scanning on a full bladder*
- Fluid management



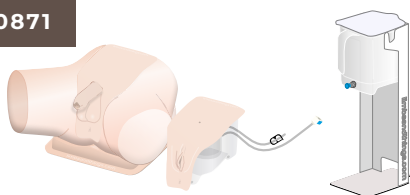
**INCLUDES
AUGMENTED REALITY**
Discover the benefits on page 8

- No ongoing costs and unlimited users
- Bridge the learning gap between theory and practice
- Interact with internal anatomy to build understanding
- Visualise the catheter pathway
- Multiple students learning at once
- Materials to learn with outside of the classroom

Standard Catheterisation Trainer Set

60853

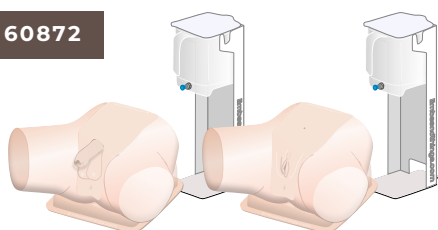
60871



Advanced Catheterisation Trainer Set

60854

60872



QUALITIES

REALISM

- Supple urethra & resistant sphincter providing realistic response
- Flaccid penis & removable foreskin
- Vaginal opening & realistic urethral meatus
- Anatomically accurate bladder

KEY FEATURES

- Ability to assess the student's progress
- Ultrasound compatible*
- Easy to set up
- Modular
- Visualise internal anatomy with Augmented Reality

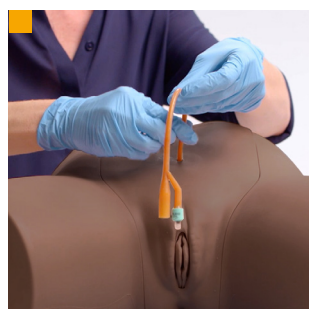
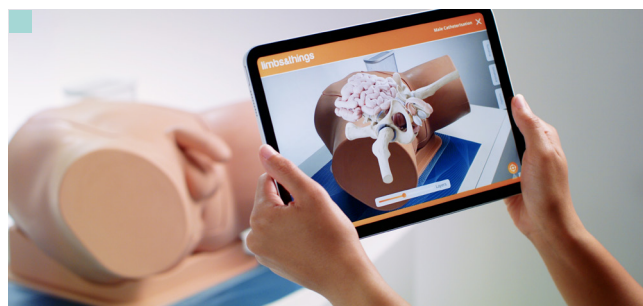
VERSATILITY

- Easily interchangeable male, female & suprapubic catheterisation modules

SAFETY

- Trainer is latex free (catheters provided contain latex)

* 60852 | 60873 Only



Compatible with Augmented Reality

Ability to view catheter path when module used without pelvic shell

Suprapubic management

WHAT'S INCLUDED

	MALE	FEMALE	SUPRAPUBIC (ULTRASOUND)	STANDARD	ADVANCED
Male Catheterisation Module	✓	×	×	✓	✓
Female Catheterisation Module	×	✓	×	✓	✓
Suprapubic (Ultrasound) Catheterisation Module	×	×	✓	×	×
Suprapubic Insertion Bungs (x2)	×	×	✓	×	×
Catheterisation Foreskins (x3)	✓	×	×	✓	✓
Aseptic Catheterisation Sleeves (x2)	✓	✓	×	✓	✓(x2)
Water System	✓	✓	✓	✓	✓(x2)
Pelvic Shell & Stand	✓	✓	×	✓	✓(x2)
Water Extension Tubing	✓	✓	×	✓	✓(x2)
Limbs & Things Lubricant	✓	✓	×	✓	✓(x2)
Antifungal Agent (Milton Sterilising Fluid)	✓	✓	✓	✓	✓(x2)
14 French Foley Catheter	✓	✓	×	✓	✓(x2)
Plastic Kidney Dish	✓	✓	×	✓	✓(x2)
Augmented Reality Mat	✓	✓	×	✓	✓(x2)

LUMBAR PUNCTURE & EPIDURAL RANGE



This range offers realistic, repeatable and cost effective training in the core skills of lumbar puncture and epidural anaesthesia for both palpation and ultrasound guided techniques.

All three models share a common base but offer different levels of complexity to support trainees from early through to advanced learning.

Designed in conjunction with clinicians, the models feature realistic feel and response while offering a safe environment for learning and skill maintenance.

Lumbar Puncture Model

61000

61023

This model is designed for early years training. It features replaceable tissue inserts, durable spine and dura that accurately recreate the feel of puncturing the dura and the collection and measurement of CSF.

Its separate spine and replaceable tissue means the model is a cost effective way to train large numbers of students.



Advanced Epidural & Lumbar Puncture Model

61001

61024

The Advanced model allows training in both lumbar puncture and epidural administration. Featuring two different epidural inserts: standard and an advanced version with steeper spine, the model is ideal for both early and advanced training for more complex procedures.

This model also features optional fat pads to fit below the skin to increase realism and difficulty for trainees.



Ultrasound Epidural & Lumbar Puncture Model

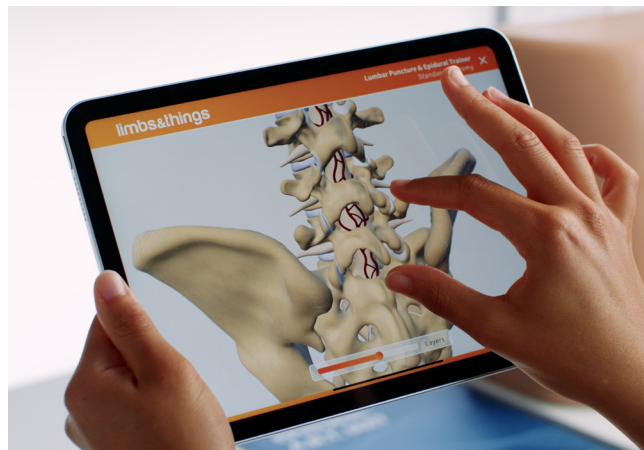
61002

61025

Ideal for those wishing to teach lumbar puncture or epidurals using the ultrasound guided technique.

Tested to work with all major ultrasound brands, this model includes visible facet joints.





QUALITIES

ANATOMY

- Palpable sacrum, iliac crests & vertebrae L2-5

REALISM

- Can feel when the dura has been punctured
- Able to practise loss of resistance technique**
- Obese skin options*
- Optional steeper spine & smaller vertebral spaces*

VERSATILITY

- All inserts compatible with common base
- Rotatable skin and dura to ensure cost effective training
- Position in left lateral and sitting

* 61001 | 61024 Only

** 61001 | 61024 | 61002 | 61025 Only



INCLUDES AUGMENTED REALITY

Discover the benefits on page 8

- No ongoing costs and unlimited users
- Bridge the learning gap between theory and practice
- Interact with internal anatomy to build understanding
- Visualise the path of epidural & lumbar puncture procedures
- Multiple students learning at once
- Materials to learn with outside of the classroom

SKILLS

- Injection of local anaesthetics
- Lumbar puncture
- Collect & measure CSF
- Epidural administration
- Ultrasound-guided technique
- Obese option

LUMBAR PUNCTURE MODEL

✓
✓
✓
x
x
x

ADVANCED EPIDURAL & LUMBAR PUNCTURE

✓
✓
✓
✓
x
✓

ULTRASOUND EPIDURAL & LUMBAR PUNCTURE

✓
✓
✓
✓
✓
x

WHAT'S INCLUDED

LUMBAR PUNCTURE MODEL

ADVANCED EPIDURAL & LUMBAR PUNCTURE

ULTRASOUND EPIDURAL & LUMBAR PUNCTURE

- Epidural & Lumbar Puncture Torso with Torso Skin
- Epidural & Lumbar Puncture Stand
- Lumbar Puncture Insert - Bone
- Lumbar Puncture Insert - Tissue (x2)
- Epidural Insert (x2)
- Advanced Epidural Insert (x2)
- Epidural & Lumbar Puncture Ultrasound Insert (x2)
- Epidural & Lumbar Puncture Skin Pad
- Epidural & Lumbar Puncture Fat Pad (x3)
- Epidural & Lumbar Puncture Standard Dura (x2)
- Epidural & Lumbar Puncture Advanced Dura (x4)
- Epidural & Lumbar Puncture Iliac Crest Insert
- Epidural & Lumbar Puncture Insert Cartridge
- Epidural & Lumbar Puncture Sacral Insert
- Water Reservoir
- Marker Pen
- Augmented Reality Mat

✓
✓
✓
✓
x
x
x
✓
x
✓
x
✓
✓
✓
✓
✓
x
✓

✓
✓
✓
✓
✓
✓
x
✓
✓
✓
✓
✓
✓
✓
✓
✓
x
✓

✓
✓
x
x
x
x
✓
x
x
✓
✓
✓
✓
✓
x
✓
✓
✓

Chest Drain & Needle Decompression Trainer



60230

61230

Our Chest Drain & Needle Decompression Trainer has been designed to meet the specific requirements of healthcare professionals training in surgical or guidewire assisted thoracostomy and thoracentesis, chest drainage and needle decompression techniques. Chest tube insertion is possible on both types of pad, with the Advance model allowing practice of Seldinger's ultrasound technique.



QUALITIES

ANATOMY

- Representation of adult male thorax with arms raised
- Bony & soft tissue landmarks: manubriosternal joint, clavicles, ribs, pectoralis major & latissimus dorsi
- Internal ultrasound anatomy: diaphragmatic structures and collapsed lung

REALISM

- Can give the impression of breathing under ultrasound when using the advanced pad
- Needle decompression on the midclavicular lines, produces a realistic "hiss" of air releasing. A saline filled syringe can also be used to observe bubbles of gas releasing from the chest cavity
- Simulates movement within the liquid of the chest cavity when using ultrasound-guided procedures
- Standard pads offer a realistic "pop" on insertion of finger or forceps into the pleural space

KEY FEATURES

- Reservoirs can be filled with fluid or mock blood to represent pleural effusion
- Bilateral chest drain & needle decompression pads

VERSATILITY

- Suitable for supine, sitting or leaning forwards positions
- Compatible with thoracic seals when using the standard pad
- Affordable replaceable pads

SAFETY

- Latex free



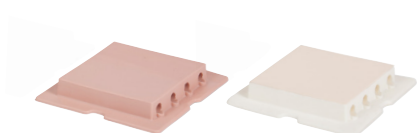
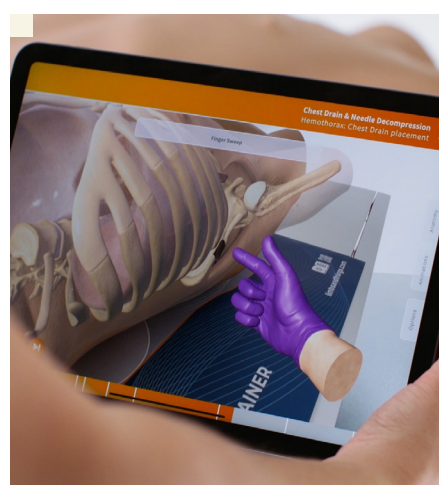
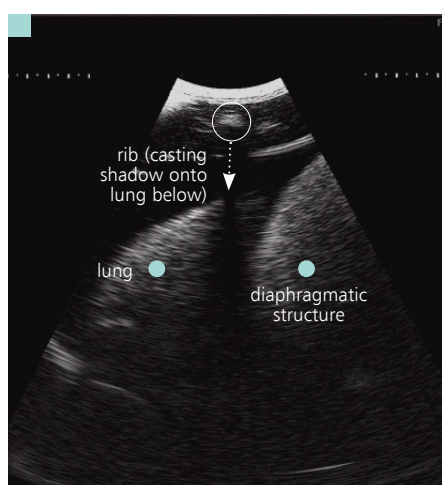
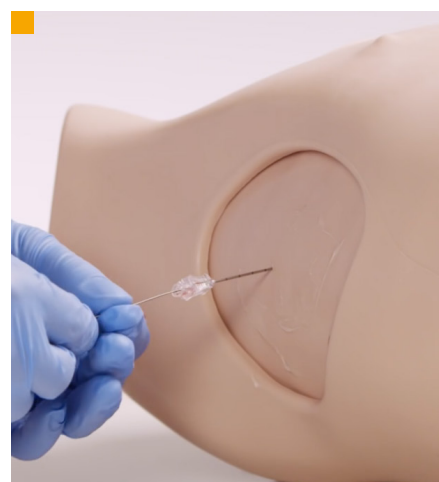
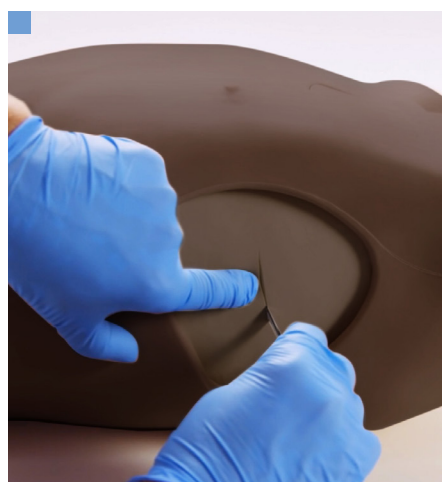
INCLUDES AUGMENTED REALITY

Discover the benefits on page 8

- No ongoing costs and unlimited users
- Bridge the learning gap between theory and practice
- Interact with internal anatomy to build understanding
- Visualise chest drain & needle decompression procedures
- Multiple students learning at once
- Materials to learn with outside of the classroom

SKILLS

- Needle decompression of a tension pneumothorax (at both the 2nd & 5th intercostal space)
- Open or cut-down chest drain insertion: recognition of correct position, surgical incision, blunt dissection through chest wall, perforation of pleura & finger sweep
- Application of adhesive dressings and/or suturing of chest tube
- Ultrasound-guided chest drain insertion (Seldinger technique): including insertion of needle under direct vision & ultrasonic recognition of chest structures
- Management of pleural effusion
- Increased understanding of internal anatomy & procedures with augmented reality



- Blunt dissection
- Chest tube insertion
- Seldinger technique
- Internal anatomy visible under ultrasound
- Realistic needle decompression
- Augmented Reality (AR)

PAD FEATURE COMPARISON

ADVANCED STANDARD

60232

60234

61232

61233

- Ultrasoundable
- Use with liquids
- Effusion
- Haemothorax simulation
- Pleural layer
- Blunt dissection
- Seldinger technique
- Can be sutured
- Needle insertion
- Guidewire insertion
- Dilator insertion
- Drain tube insertion
- Use with adhesive dressings
- Shows respiratory swing
- Latex free

✓
✓
✓
✓
✓
✓
✓
✓
✓
✓
✓
✓
✓
✓
✓
✓

×
×
×
×
✓
×
✓
✓
✓
✓
✓
✓
✓
×
✓

WHAT'S INCLUDED

60230

61230

- Needle Decompression Pads (x2)
- Advanced Chest Drain Pads (x2)
- Standard Chest Drain Pads (x2)
- Chest Drain Rib Frame (Left)
- Chest Drain Rib Frame (Right)
- Chest Drain Lungs (x2)
- Chest Drain Diaphragms (x2)
- Chest Drain Ribs (x12)
- Chest Drain Pump: Respiratory Swing
- Chest Drain Pump: Needle Decompression
- Chest Drain Slotted Retaining Knobs
- Key with Keyring
- Torso
- Carry Case
- Augmented Reality Mat

TruMan Trauma Adult

TCTTA0001

TCTTA0001DS

Able to simulate a range of emergency procedures, this model is ideal for training in airway management skills for trauma situations including needle decompression, tracheostomies and chest tube insertion.

KEY FEATURES

- Supports bilateral chest tube insertion
- Full chest needle decompression
- Practice CPR
- Anatomically accurate oral & nasopharyngeal airway
- Ability to simulate difficult airway scenarios including tongue oedema
- Realistic look & feel of tissues representing skin, fat & muscle
- Accurate representation of rise & fall during ventilation



Smart TruMan Trauma Adult



TCTTAP001

TCTTAP001DS

Smart TruMan Trauma is able to provide real-time patient monitoring, feedback on CPR performance and with the ability to simulate a patient with advanced airway management needs, the model immerses learners into emergency scenarios.

KEY FEATURES

- Offers real-time CPR feedback and performance tracking
- Assessment tools including ECG, defib support, x-ray images & ultrasound views
- Supports bilateral chest tube insertion with ultrasound
- Full chest needle decompression
- Anatomically accurate oral & nasopharyngeal airway with the ability to change difficulty
- Supports pelvic binding
- Stomach distension identification
- Accurate look & feel of tissues
- Rise & fall of chest during successful ventilation



COMPARE MODELS

TRUMAN TRAUMA ADULT

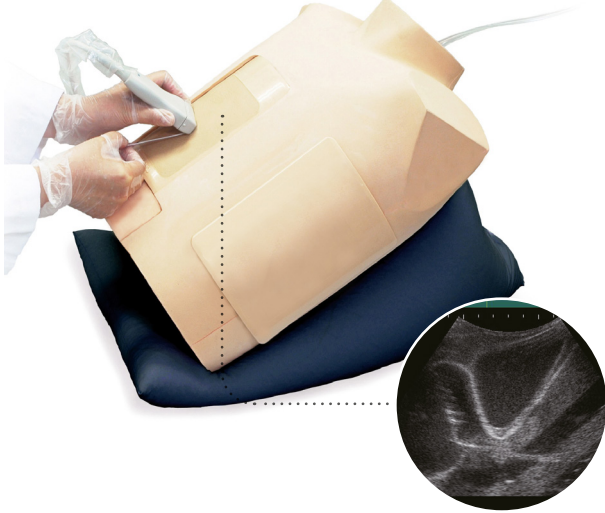
SMART TRUMAN TRAUMA ADULT

Chest Drain	✓	✓
Needle Decompression	✓	✓
Airway Management	✓	✓
Cardiopulmonary Resuscitation (CPR)	✓	✓
- Realtime CPR Feedback	×	✓
Pelvic Binding	✓	✓
Stomach Distension Identification	✓	✓
Vital Signs Monitoring	×	✓
Scenario-Based Assessment	×	✓
Ultrasound & Chest X-Ray Simulation	×	✓

Ultrasound Guided Pericardiocentesis Simulator

KKMW15

KYOTO KAGAKU



This simulator allows trainees to practise pericardiocentesis: inserting the needle under ultrasound guidance, piercing the pericardial sac and aspirating pericardial fluid.

SKILLS

- Ultrasound guided pericardiocentesis using subxiphoid or parasternal approach
- Patient positioning
- Visualisation of pericardial fluid under ultrasound
- Palpation & identification of left xiphisternal junction (Larrey's point) for needle insertion
- Insertion of needle only in pericardial space
- Aspiration of pericardial effusion

QUALITIES

ANATOMY

- Adult upper torso
- Left xiphisternal junction (Larrey's point)

REALISM

- Realistic haptic response for pericardial sac needle tip puncture

KEY FEATURES

- Confirmation of ventricles, ribs, pericardium, liver & main artery under ultrasound scanning
- Durable & replaceable puncture pad

WHAT'S INCLUDED

Adult chest model with spacer
Puncture pad for pericardiocentesis
Pillow for positioning
Instruction manual
Syringe

CONSUMABLES

KK11394-010 Puncture Pad for Guided Pericardiocentesis Simulator (x2)

Ultrasound Guided Thoracentesis Simulator - Full Set

KKMW4

KYOTO KAGAKU



The Ultrasound Guided Thoracentesis Simulator facilitates training for puncture and injection training under ultrasound guidance.

The two puncture units, mid-scapular line access and mid-axillary line access, both include the ribs, soft tissue, pleura, lung and diaphragm. The ribs can be palpated from the surface to determine site for needle insertion. Volume of fluids can be controlled.

SKILLS

- Recognition of landmarks by ultrasound
- Palpating the ribs
- Puncture and injection training

QUALITIES

ANATOMY

- Anatomical parts include:
 - Ribs
 - Pleura
 - Soft tissue
 - Diaphragm
- Mid-axillary line: 6th-9th ribs
- Mid-scapular line: 8th-11th ribs

OVERVIEW

- Excellent ultrasound image
- Ribs can be palpated
- Strap-on puncture unit to learn patient positioning & professional-to-patient communication

VERSATILITY

- 2 sites for access: right mid-scapular line & left mid-axillary line
- Volume of pleural effusion can be controlled to set different levels of challenges
- Provides ultrasound images for appropriate locations to practice the subxiphoid approach & the parasternal approach

TCTJU1000

TCTJU1000DS

NEW



Practice critical lower-body trauma scenarios with TruJunctional. Replicating complex traumatic injuries (gun shots and stab wounds) to build trainee confidence in high-pressure emergency scenarios. Instructors can also simulate unsuccessful haemorrhage control, forcing learners to make decisions under pressure whilst highlighting the importance of correct technique. Compatible with essential trauma care devices including 3 types of tourniquets and pelvic binders.

SKILLS

- Wound identification
- Wound packing & management
- Blood loss management
- Pelvic binding
- Junctional & CAT tourniquet placement
- Decision making: option for instructors to choose which interventions will stop the bleeding

QUALITIES

ANATOMY

- Anterior superior iliac spine
- Pubic symphysis
- Greater trochanters
- Upper thigh
- Stab wounds
- Gunshot wounds

REALISM

- Accurate anatomical landmarks for correct pelvic binding placement
- Accurate aesthetic replication of wounds
- Lifelike bleeding which responds to interventions
- Realistic size, weight & feel of an average adult male

WHAT'S INCLUDED

TruJunctional Model

Concentrated Blood x1 250ml bottles

TruJunctional Carrier Case

Pressure Pump (holds up to 2 litres) + Tubing

Plastic Refill Funnel

Silicone Mat

TruTourniquet



The TruTourniquet simulator allows medical professionals to realistically practice controlling massive lower extremity haemorrhages. It helps refine skills in wound packing and tourniquet application for severe bleeding in trauma cases, providing visual feedback for correct pressure.

SKILLS

- Combat Application
- Tourniquet application
- Techniques for applying various types of tourniquets
- Communication skills

QUALITIES

REALISM

- Accurate representative of a right thigh following a traumatic amputation, featuring a fractured femur, and bleeding point
- Allows trainees to learn how to place a tourniquet and shows a clear visual confirmation when they stop the blood flow

KEY FEATURES

- Lower extremity trauma of an adult thigh
- Extensively tested for repeatable training
- Amputated stump can be removed from the base for training scenarios outside of the classroom
- Key for ATLS, Tactical Combat Casualty Care (TCCC), Civilian Casualty Care (CCC) and Stop The Bleed® training

WHAT'S INCLUDED

- 1 TruTourniquet Model
- 1 TruTourniquet carrier case
- 1 Spare hinge pin with split ring
- 3 spare splash shield attachment screws
- 1 Plastic refill funnel
- Concentrated Blood (Pack of 5 bottles)

TruWound



The TruWound simulator offers medical professionals a realistic way to train in wound packing techniques required for the care of severe bleeding in trauma patients gives visual feedback when the correct pressure is applied.

SKILLS

- Wound packing procedures and techniques using haemostatic pads
- Communication skills

QUALITIES

REALISM

- Upper thigh

KEY FEATURES

- Representative of a large bullet wound to the upper thigh, with realistic size, appearance and feel
- Pressurised blood system to simulate heavy bleeding with venous and arterial flows
- Visual feedback following correct packing of the wound
- Perform individual or multi-person training with just one TruWound simulator
- Allows for control blood of flow to either 1, 2 or all 3 wounds simultaneously
- Ideal product to support ATLS, Tactical Combat Casualty Care (TCCC), Civilian Casualty Care (CCC) and Stop the Bleed® training

WHAT'S INCLUDED

- 1 TruWound Model
- 1 Black Carrier Bag
- 1 Pressure pump (holds up to 2 litres) + tubing
- 1 bottle of Concentrated Blood (replacements available in packs of 5 bottles)
- 3 Blood collection containers
- 1 Plastic refill funnel

Clean Bleed[®] Mat

70400



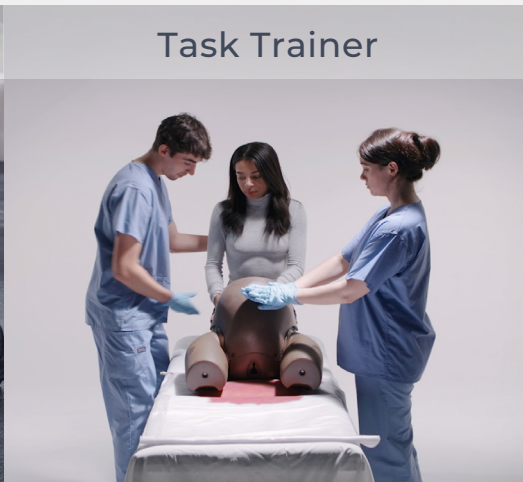
Designed to support any simulation scenario where external blood or fluid loss is a key indicator of a patient's condition such as gunshot wounds, postpartum haemorrhage or post-operative bleeds.

Support different scenarios

Simulated Patient



Task Trainer



Full Body Manikin



KEY FEATURES & BENEFITS

- No mess bleed is contained in a sealed mat
- Easy set up and cleaning
- Controllable blood flow
- Reusable blood & pads for multiple uses & cost-saving
- Portable
- For use indoors & outdoors
- Suitable for use with simulated patients, task trainers & full body manikins
- Simulate a range of fluids

SKILLS

- Identify fluid loss
- Assess the speed & colour of the fluid loss
- Practice Quantitative Blood Loss (QBL)
- Monitoring of patient condition
- Intervention decision making
- Determine success of interventions

Scan the QR Code to find out more



SCAN ME

AirSim Combo X



The TruCorp AirSim Combo X combines intubation and cricothyrotomy training in one life-like model. The trainer fully supports needle and surgical cricothyroidotomy, and percutaneous tracheostomies. The palpable laryngeal inserts, an inflatable tongue, and improved, real-feel skin, give trainees realistic feedback during procedures.

Airsim Combo Bronchi X



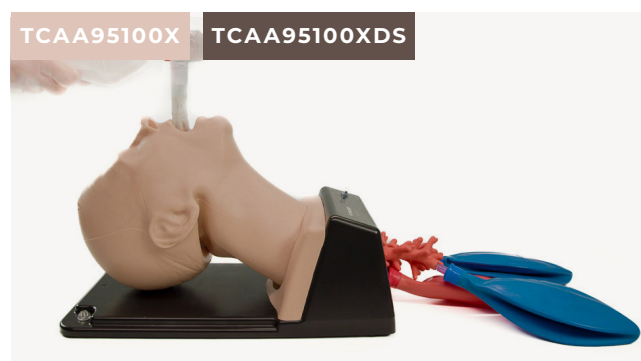
With the addition of the 4th generation bronchi, trainees are able to perform diagnostic bronchoscopies, use bronchial barrier devices to perform lung isolation, and practise suction pulmonary secretions alongside front of neck access.

AirSim Advance X



AirSim Advance X features the uniquely constructed AirSim X airway and an anatomically correct nasal passage for visual accuracy and realistic feedback during airway management procedure practise.

Airsim Advance Bronchi X

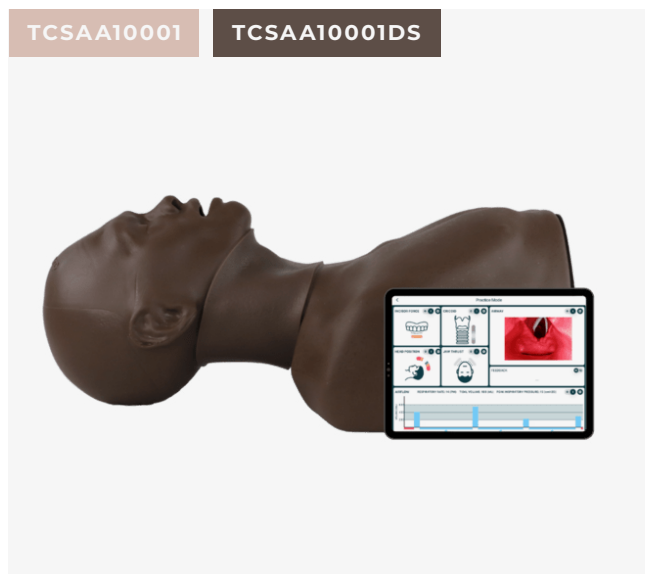


With the additional bronchioles, users can train in bronchoscopy, lung suction and lung isolation techniques including, bronchial blocker insertion, single & double endobronchial tubes, and specialised stents.

COMPARE MODELS

	AIRSIM ADVANCE X	AIRSIM ADVANCE BRONCHI X	AIRSIM COMBO X	AIRSIM COMBO BRONCHI X
Oral / nasal intubation	✓	✓	✓	✓
Bag Valve Mask ventilation (BVM)	✓	✓	✓	✓
Supraglottic device insertion	✓	✓	✓	✓
Direct / video laryngoscopy	✓	✓	✓	✓
Bronchoscopy	×	✓	×	✓
Needle cricothyroidotomy	×	×	✓	✓
Surgical cricothyroidotomy	×	×	✓	✓
Percutaneous tracheostomy	×	×	✓	✓
Nasogastric tube insertion	✓	✓	✓	✓

Smart Airway Adult

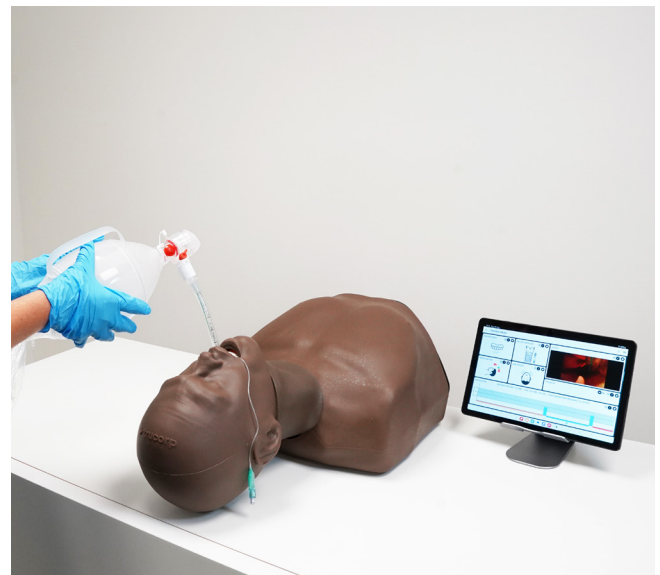


Smart Airway Adult provides personalised feedback and assessment to support learners' development of correct technique.

Designed for effective training, users can learn independently with live feedback. Performance statistics and a video of the practice are recorded to allow instructors to debrief learners post-training, supporting efficient workflow. Assessment Mode allows instructors to receive quantitative results and can add feedback, ensuring learning progress is on track.

SKILLS

- Needle cricothyroidotomy
- Surgical cricothyroidotomy
- Percutaneous tracheostomy
- Double nasotracheal intubation
- (BVM) Bag valve mask ventilation techniques
- Full range of supraglottic device insertion
- Direct laryngoscopy
- Video laryngoscopy
- Sellick manoeuvre
- Awake fibre optic examination
- Endotracheal tube insertion
- Combi tube insertion



APP FEATURES

QUANTITATIVE MEASURES

- Embedded sensors track key metrics & displayed on the app which include incisor force, patient head positioning, jaw thrust, cricoid pressure, cricothyroidotomy, oesophageal intubation, internal airway visuals, ventilation rate & volume (including left & right lung isolation)
- Reinforcing quantitative best practices for procedures

SCENARIO VARIABILITY

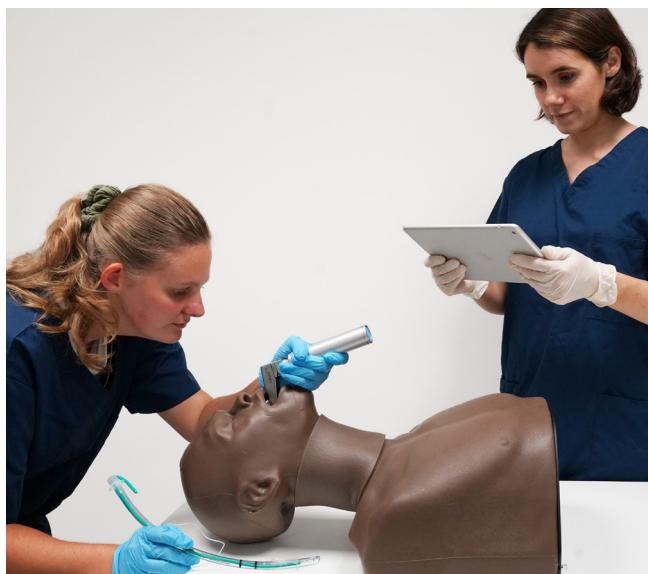
- Fully customisable assessment sessions with detailed feedback reports generated after each session outlining performance, user technique & any recommended corrective practice(s). Such sessions include direct laryngoscopy & intubation, bag mask ventilation & sellick manoeuvre

VIDEO DEBRIEFING

- Intuitive performance dashboard collates individual session data
- Instructor-student discussions can continue post scenario to gain valuable feedback

OPTIMISED INSTRUCTION

- Video & theory tutorials provide correct techniques & rationale about why & how to perform the skill.
- Storage of session results created per user being a key to helping students & medical professionals track progress remotely & improve their technique in airway management related procedures
- By encapsulating the visualisation, tactile experience & data driven performance tracking of airway techniques, the Smart Airway accelerates competency, adaptability & confidence while requiring minimal instructor presence.



QUALITIES

REALISM

- Adult airway simulation trainer with performance feedback of key metrics
- Supports independent learning with customisable content
- Independent or instructor-led assessment modes

KEY FEATURES

- Realistic adult male torso with visible chest rise & fall
- Uses CT DICOM data for anatomically correct internal features and accurate landmarks

VERSATILITY

- Incorporates the TruCorp replacement larynx & neck skins to allow for repeatable training
- Airway tested to withstand 20,000+ intubation cycles

Smart Airway Child

TCSAC10002

TCSAC10002DS

Enhance your paediatric airway training with Smart Airway Child. Using quantitative and qualitative feedback to guide improvements in airway management technique, the trainer is the ideal tool for independent accurate skill training. Using the instructor or self- led assessment modes provide a basis to track progress.

SKILLS

- Needle cricothyroidotomy
- Surgical cricothyroidotomy
- Percutaneous tracheostomy
- Double nasotracheal intubation
- (BVM) Bag valve mask ventilation techniques
- Full range of supraglottic device insertion
- Direct laryngoscopy
- Video laryngoscopy
- Sellick manoeuvre
- Awake fibre optic examination
- Endotracheal tube insertion
- Combi tube insertion



QUALITIES

REALISM

- Realistic child torso with visible chest rise & fall
- Uses CT DICOM data of a 6-year-old child for anatomically correct internal features & accurate landmarks

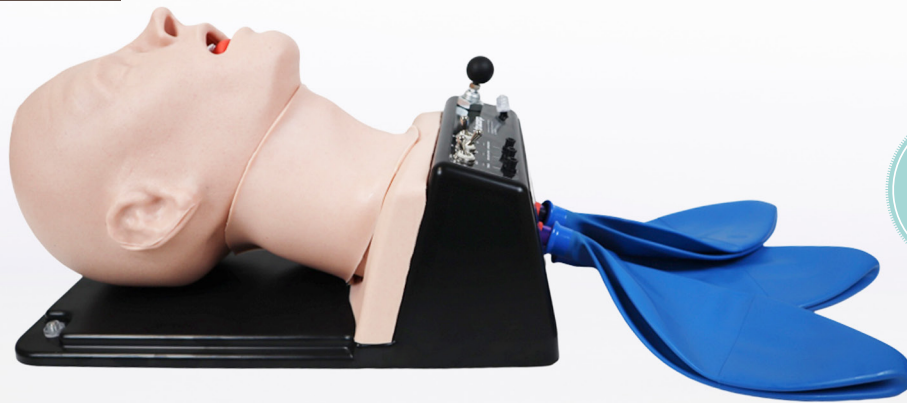
KEY FEATURES

- Child airway trainer with feedback of key performance metrics
- Supports independent learning with customisable content
- Independent or instructor-led assessment modes

AirSim Difficult Airway

TCDA91100

TCDA91100DS



The AirSim Difficult Airway supports trainees' practice in a range of scenarios from straightforward to very difficult to intubate, facilitating training for both beginner & advanced users.

An innovative design allows the tongue, larynx, jaw, head rotation, and vocal chords to be uniquely adjusted to create different conditions.

QUALITIES

REALISM

- Easy identification of sternal notch, tracheal rings & cricoid and laryngeal cartilages

KEY FEATURES

- Interchangeable larynx allows quick & easy repeated use
- Wraparound replaceable neck skin rotates for 10-15 incisions
- All features can be activated quickly & effortlessly by the instructor to create a more challenging or easier experience. The features can be used in isolation or combined to deliver a scenario with numerous variations of difficulty

SKILLS

- Laryngospasm
 - Adjustable from normal to complete airway obstruction
 - Sudden closure of the vocal cords can be simulated
 - Upon successful user action, laryngospasm can be mechanically reversed to provide positive feedback
- Displaced larynx
 - Ability to displace the Larynx into a more anterior position to make visualisation of the vocal cords more challenging
 - Adjustable to provide various levels of difficulty
- Tongue Edema
 - The tongue can be swollen to simulate various degrees of tongue angioedema
- Receding / protruding mandible
 - Various degrees of malocclusion, one mandibular variant & two maxillary variants
 - Overbite and underbite features simulated
- Trismus
 - Ability to grossly restrict mouth opening to make insertion of airway devices more challenging
- Neck lock / head rotation restriction
 - Ability to simulate cervical arthropathy through restricting the range of motion of cervical spine neck lock / head rotation restriction

TruCric

TCTCRIC1

TCTCRIC1DS

The TruCric is ideal for practising emergency needle and surgical cricothyroidotomy techniques. The model also facilitates percutaneous tracheostomy procedures.

Anatomically accurate features including; tracheal rings, simulated cricoid, cricothyroid membrane and laryngeal cartilages help provide realistic training in front of neck access techniques.



AirSim Baby X



The AirSim® Baby X, based on a 0 to 6-month-old, provides a realistic and anatomically correct paediatric manikin for airway management training.

SKILLS

- Double nasotracheal intubation
- Bag and mask ventilation techniques
- Full range of supraglottic devices
- Direct and video laryngoscopy
- Endotracheal tube insertion

QUALITIES

REALISM

- 'Real feel' skin covering for added realism
- Realistic external & internal anatomical features allow for easy and successful demonstration of all paediatric videolaryngoscopes

KEY FEATURES

- Realistic feedback during airway management procedures including bag/mask ventilation, supraglottic airway insertion, both naso & orotracheal intubation

WHAT'S INCLUDED

AirSim Baby X
 Baby Lung Bag Set
 Bottle of TruCorp Lubrication (100ml)
 USB User Manual
 Carry Case

AirSim Child Combo X



Ideal for practising oral and nasal intubation training techniques, percutaneous tracheostomy and emergency cricothyroidotomy on a 6-year-old child.

SKILLS

- Double nasotracheal intubation
- Needle and surgical cricothyroidotomy
- Percutaneous tracheostomy
- Oral and nasal intubation
- Laryngeal mask airway & supraglottic device insertion
- Combi tube insertion
- Awake fibre optic intubation
- Video laryngoscopy
- Bag & mask ventilation techniques

QUALITIES

REALISM

- A realistic larynx which features palpable cricoid landmarks, laryngeal cartilages & tracheal rings

KEY FEATURES

- A tongue bulb which can be inflated to create tongue edema providing a variance during training
- User feedback through the visualisation of stomach inflation and lung expansion

WHAT'S INCLUDED

AirSim Child Combo X	Child Lung Bag Set
USB User Manual	Spare Larynx Inserts (x4)
Bottle of TruCorp Lubrication (100ml)	Carry Case

Pierre Robin X



Developed with clinicians from Children's Hospital Los Angeles, this model is an accurate representation of a 6-month-old with Pierre Robin Sequence (PRS) for emergency airway management practice. Using actual CT DICOM scan data from infants with PRS, this model accurately represents the congenital defects, including:

- Significant mandibular hypoplasia or micrognathia (small lower jaw)
- Glossoptosis (displacement of the tongue)
- Cleft palate (gap in the roof of the mouth)
- Bifid uvula (forked or split uvula)

TruCVC

TCTCVC100

TCTCVC100DS



TruCVC is the latest addition to TruCorp's ultrasound-guided task trainers, specifically designed to aid in central venous catheter (CVC) insertion. With realistic and accurate vascular anatomy, TruCVC offers unmatched realism to aid in developing central line skills.

SKILLS

- Correct needle positioning
- Central venous catheter placement
- Wire manipulation
- Cannulation techniques
- Trendelenburg positioning
- Fluid injection
- Blood withdrawal
- Seldinger techniques
- Ultrasound techniques



QUALITIES

ANATOMY

Clinical Anatomy:

- Upper torso & neck, adult male
- Right clavicle
- Manubrium
- First right rib
- Sternocleidomastoid muscle

Vascular Anatomy:

- Internal jugular vein
- Subclavian vein
- Carotid artery
- Subclavian artery

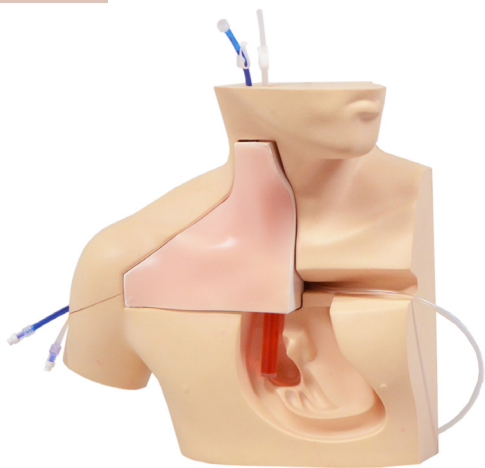
REALISM

- Realistic vascular anatomy
- Accurate head positioning
- Vascular tenting upon vascular access
- Arterial pulse simulation possible
- Simulator allows for withdrawal & administration of fluids

Ultrasound CVC Insertion Simulator Mk 3

KKM93C

KYOTO KAGAKU



A realistic model for teaching cannula approaches and the insertion of central venous catheters into the superior vena cava, with and without ultrasound guidance.

SKILLS

- Use of ultrasound technology
- Identification of key landmarks, including the clavicle, sternocleidomastoid muscle & the internal carotid artery
- Navigation of needle under ultrasound & recognition of correct vessels
- Subclavian, supraclavicular, axillary & internal jugular approach to catheterisation

QUALITIES

ANATOMY

- Internal jugular vein & carotid artery
- Subclavian vein & artery
- Superior vena cava
- Ribs
- Clavicle
- Sternum
- Lung

REALISM

- Lifelike needle tip resistance
- Excellent image quality
- Palpable landmarks & carotid arterial pulsation

TruIV Block

TCTNB110

TCTNB110DS



TruIV Block is efficient and easy to set up, giving more time for learning IV cannulation skills and ultrasound techniques

Designed to represent a variety of patient types, it contains both superficial and deep veins at a range of diameters (4-8mm). It also features fascia layers for enhanced realism.

QUALITIES

ANATOMY

IV block representing IV cannulation sites:

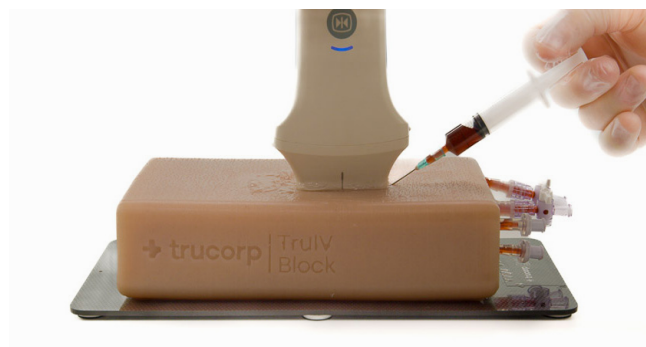
- 4 superficial veins
- 4 deep veins

REALISM

- 8 veins, superficial and deep
- Lifelike vascular tenting upon successful entry into a vessel
- Clear fascia layers

KEY FEATURES

- Longitudinal and transverse anatomical viewing options
- Supplied in a durable carry case
- Suitable for use with all ultrasound machines



SKILLS

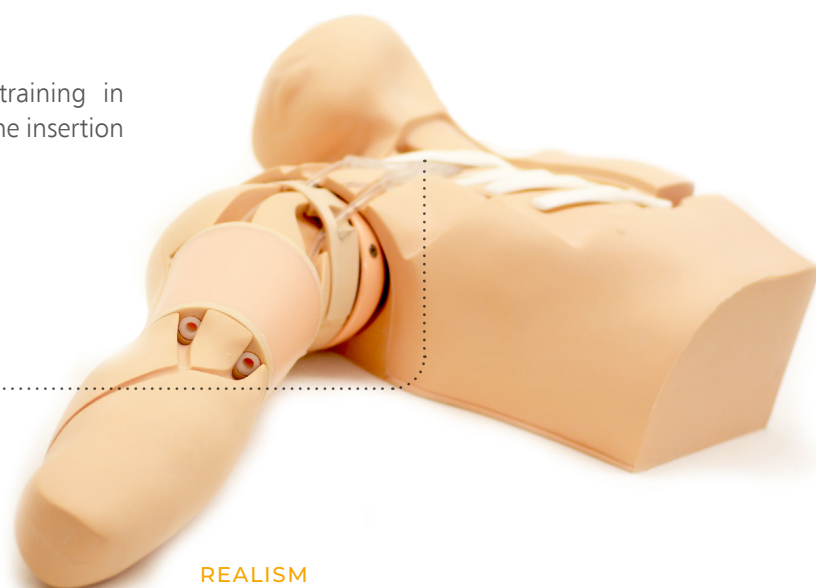
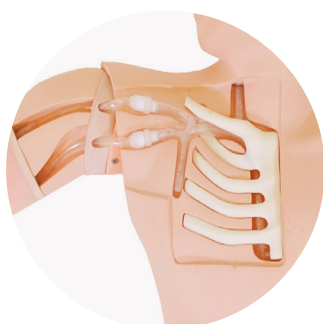
- Probe positioning and movement
- Identification of veins in soft responsive tissue
- Targeting veins for vascular access
- Ultrasound guided IV cannulation

Ultrasound Guided PICC Training Simulator

KKMW18

KYOTO KAGAKU

A simulator for comprehensive hands-on training in Peripherally Inserted Central Catheter (PICC) line insertion and removal under ultrasound guidance.



SKILLS

- Patient positioning
- Puncture site selection
- Ultrasound-guided venous access
- Seldinger technique
- Peel-away cannula technique
- Advancement of the cannula into the SVC

REALISM

- Palpable ribs & right clavicle allow measurement of catheter length as well as providing anatomical understanding of the correct PICC tip location
- Anatomically correct bifurcation of the vein in the upper chest provides realistic resistance from the outer vessel walls and allows simulation of complications such as incorrect insertion of the catheter into the jugular, thoracodorsal or subclavian vein
- Realistic flashback confirms successful venous access

ARTERIAL PUNCTURE WRIST



Designed to support the full learning journey, this model enables trainees to build confidence in both arterial blood gas sampling and arterial line placement.

Preset pulse and pressure rate options allow for standardised and repeatable training which is ideal for classroom teaching and exam settings such as OSCEs. Use with simulated or standardised patients for added realism.

STANDARD

72500

ULTRASOUND

72501

QUALITIES

ANATOMY

- Wrist with lifelike movement
- Radial artery
- Pulse rate (40, 80, 120 BPM)
- Blood pressure (low, medium, high representation)

REALISM

- Quiet pump for minimal distractions
- Wrist cuff to conceal visual indicators
- Representation of 9 clinical presentations
- Blood flashback
- Self-fill a syringe
- Full cannula insertion compatible with:
 - Range of over the needle 20 gauge cannulas
 - Seldinger technique
- Realistic ultrasound imagery with the ultrasound insert

LEARNING VERSATILITY

- Classroom, skills lab, or immersive environment learning
- Ideal for exam settings
- Use with simulated patient or standalone

MAINTENANCE

- Easy cleaning mode
- Modular vessels & injection site tissue blocks for easy and cost effective replacement
- Popper system allows for easy access to vessels for replacement and effortless skin installation

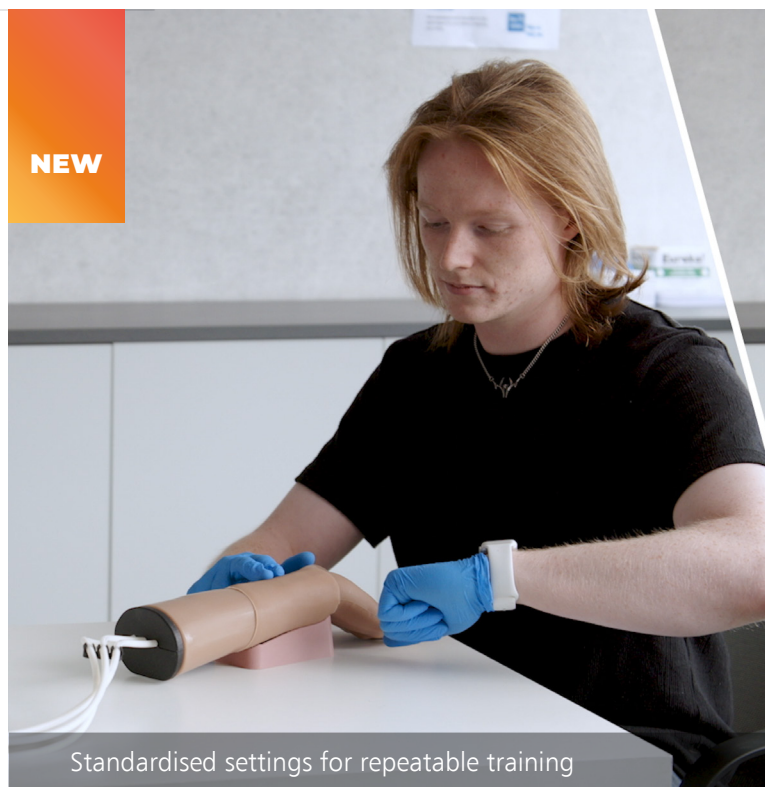
WHAT'S INCLUDED

STANDARD

ULTRASOUND

Arterial Puncture Wrist	✓	✓
Arterial Puncture Wrist Stand	✓	✓
Outer Skin	✓	✓
Inner Block	✓	✓
Pump Unit	✓	✓
Arterial Puncture Vessels	✓ x10	✓ x10
Standard Block	✓ x2	✓ x2
Ultrasound Block	x	✓ x2
Skin Cuff	✓	✓
Fluid Bottle	✓	✓
Concentrated Blood	✓	✓
International Power Cable	✓	✓

NEW



Standardised settings for repeatable training



Self cleaning

Ultrasound Arterial Puncture Wrist

Enhance training with the Ultrasound model which includes two additional inserts to support the practice of ultrasound-guided techniques. Trainees can use their existing ultrasound equipment to locate the artery, identify access points, and build confidence interpreting ultrasound images.

SKILLS

STANDARD ULTRASOUND

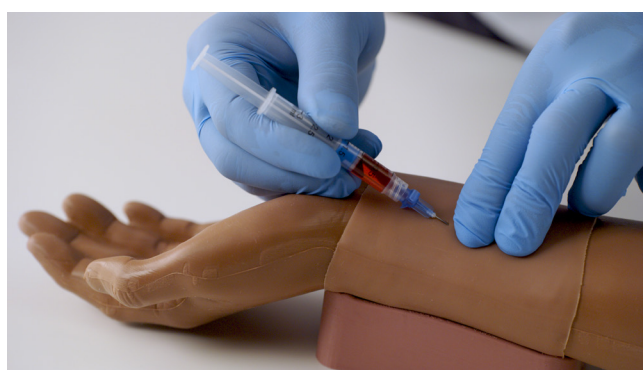
Wrist positioning	✓	✓
Palpation of artery	✓	✓
Assessing pulse & pressure	✓	✓
Identifying access points	✓	✓
Arterial blood gas sampling	✓	✓
Cannulation / Line placement	✓	✓
Ultrasound guided practice	×	✓



Compatible with any ultrasound equipment



Ideal for classroom learning



Use with simulated patient

VENEPUNCTURE ARM RANGE



The Venepuncture Arm Range provides the ideal training platform for practising the skills related to venepuncture and IV cannulation.

Suitable for undergraduate and postgraduate level training.

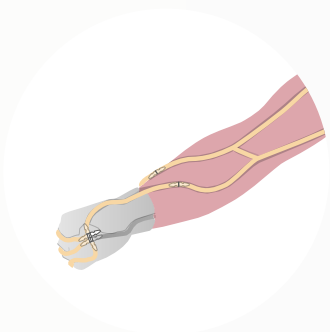


The patent pending* skin locking mechanism ensures the model is easy to re-skin whilst maintaining the lifelike haptics of the underlying and fully palpable basilic, cephalic and dorsal metacarpal veins.

Standard Venepuncture Arm

70302
70303

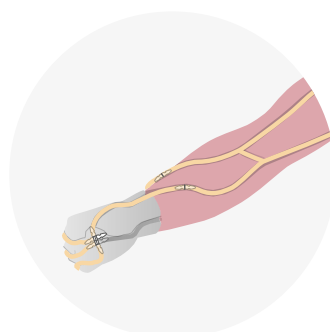
The Standard Venepuncture Arm features modular ACF and metacarpal vein anatomy connected to a gravity-fed fluid system, providing a realistic blood flow.



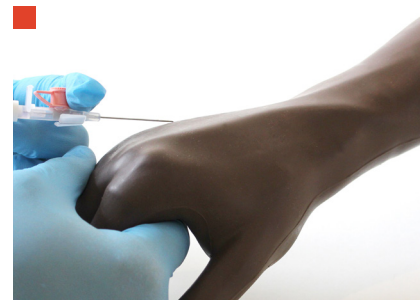
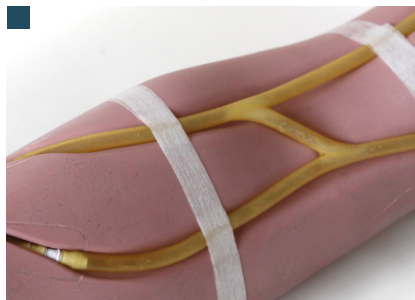
Advanced Venepuncture Arm

70300
70301

The Advanced Venepuncture Arm features antecubital fossa (ACF) and metacarpal vein anatomy connected to a pressurised fluid system, providing a spill-proof blood supply.



* PCT/GB2021/052719



SKILLS

- Venepuncture
- IV cannulation
- IV infusion
- Practise of aseptic technique

- Visual inspection & palpation
- Gripping system provides true-to-life vein placement
- Ability to position the hand for life like cannula insertion

QUALITIES

REALISM

- Realistic blood flashback
- More realistic arm look & feel
- Gripping system provides true-to-life vein placement

KEY FEATURES

- Realistic & palpable vein haptics promote accurate clinical use
- Easy-to-fit skin locking system (patent pending*) increases anatomical realism
- Vein gripping feature facilitates correct vein positioning, repeatable training & an easier re-skinning process
- Enables the application of digital pressure to stem blood flow
- Infusion tube allows for IV fluids to be administered
- Can be used in conjunction with a simulated patient

VERSATILITY

- Compatible with vacuum blood collection systems, needle & syringe & IV cannulas
- Durable skin
- Extended tubing allows for simulated patient in a classroom setting
- Veins can withstand up to 500 punctures from a 21g needle
- Arm can be upgraded through purchase of modular veins & the Advanced Pressurised Pump

SAFETY

- Basic, standard & advanced veins contain latex
- Latex-free basic vein option available (reduced durability)

CLEANING & CARE

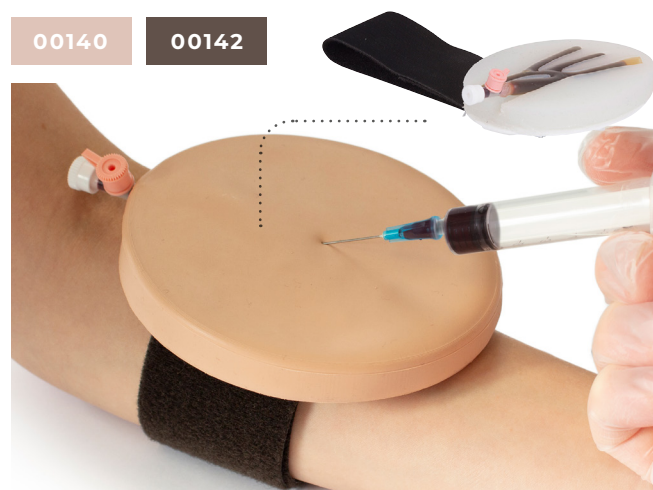
- Easy to clean, service & maintain

WHAT'S INCLUDED

	STANDARD	ADVANCED
Venepuncture Arm	✓	✓
Venepuncture Arm Skin	✓	✓
Basic Venepuncture Arm Vein	x	x
ACF Vein Module	✓	✓
Metacarpal Vein Module	✓	✓
Gravity Fed Blood System	✓	x
Pressurised Blood Pump System	x	✓
Concentrated Venous Blood - Starter Pack	✓	✓
Venepuncture Arm Rest	✓	✓
Refill Bottle	x	✓
Venepuncture Arm Infusion Tube	✓	✓
Lubricant	✓	✓

VALUE PACKS	ADV PACK (MIXED) 70318	STD PACK (MIXED) 70324	ADV PACK (LIGHT) 70313	ADV PACK (DARK) 70314	STD PACK (LIGHT) 70322	STD PACK (DARK) 70323
Adv Trainer (Light)	2	x	5	x	x	x
Adv Trainer (Dark)	2	x	x	5	x	x
Std Trainer (Light)	x	2	x	x	5	x
Std Trainer (Dark)	x	2	x	x	x	5
Arm Skin (Light)	2	2	5	x	5	x
Arm Skin (Dark)	2	2	x	5	x	5
ACF Vein Modules	4	4	5	5	5	5

ACF Pad - Venepuncture



This soft tissue strap-on pad can be used to train in venepuncture and represents the antecubital fossa of the right arm.

SKILLS

- Professional-to-patient communication
- Recognition of the vein pattern through palpation
- Insertion of a needle & cannula
- Management of blood flow

WHAT'S INCLUDED

Vein for ACF Pad
Epidermis for ACF Pad
Pad Base with Strap

QUALITIES

KEY FEATURES

- Ideal for professional-to-patient communication & scenario-based training using a simulated patient
- Straps onto the antecubital fossa of the arm
- Veins are: self-sealing for repeated use, rechargeable via a one-way valve, supplied with mock blood under pressure and replaceable

VERSATILITY

- Only use Mock Blood - Venous (250ml) (**00223**) to refill these veins
- Compatible with Mock Blood Giving Set (**60651**)

SAFETY

- Tough backing plate to prevent needlestick injuries
- Veins contain latex

CLEANING & CARE

- Replaceable epidermis
- Washable using soap & water

Three Vein Pad - Venepuncture



This soft tissue strap-on pad features 3 straight veins, one of which is paediatric size.

SKILLS

- Professional-to-patient communication
- Insertion of a needle
- Insertion of cannula
- Management of blood flow

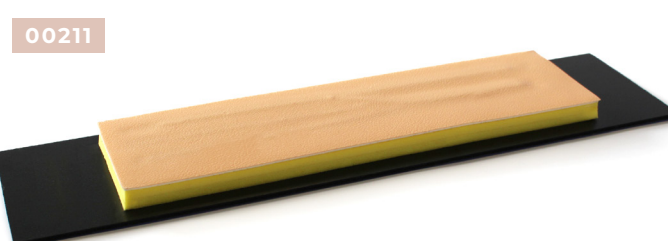
WHAT'S INCLUDED

Vein for 3 Vein Pad
Epidermis for 3 Vein Pad
Pad Base with Strap

Extended ACF Pad - Venepuncture

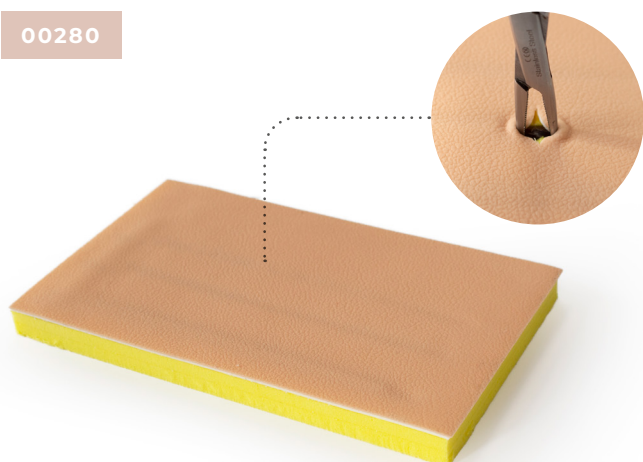
This soft tissue pad is supplied on a base for bench top training in venepuncture and insertion of cannulas. It represents the antecubital fossa of the right arm.

Improved, unidirectional skin texture.



Cutdown Pad

00280



A multi-layered pad containing filled veins for practising venous cutdown procedure.

Injection Trainer

00310

00312



Our soft tissue injection pad is designed for practising intradermal, subcutaneous and intramuscular tissue injection techniques.

The Injection Trainer has multiple tissue layers representing the epidermis, dermis, adipose and muscle layer and can easily attach to an arm or thigh to help teach professional-to-patient communication.

SKILLS

- Subcutaneous injection
- Intradermal & intramuscular injection
- Management of tissue
- Professional-to-patient communication

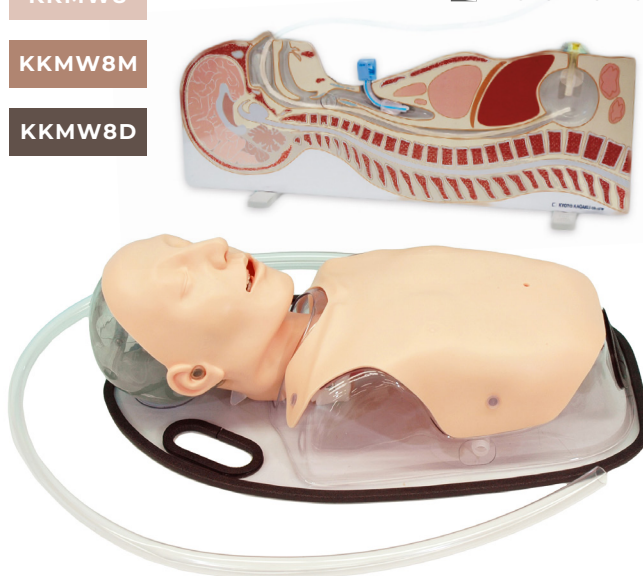
Tube Feeding Simulator

KKMW8

KKMW8M

KKMW8D

KYOTO KAGAKU



An effective trainer for caregivers and medical professionals who work with patients receiving enteral tube nutrition. The manikin offers three routes for EN tubes and allows training with real liquid foods. The placement of the tubes can be confirmed by auscultation as well as direct observation. The model is supplied with a feeding routes panel and a chest anatomy overlay sheet to facilitate anatomical understanding.

SKILLS

- Nasogastric (NG) & Orogastric (OG) tube insertion
- Percutaneous Endoscopic Gastrostomy (PEG)
- Gastric lavage
- Administration of liquid food

QUALITIES

REALISM

- Transparent chest overlay enables direct observation of procedures
- Can be set at Fowler's position
- Flexible neck allows for appropriate neck/head positioning

KEY FEATURES

- Tube placement can be confirmed by fluid aspiration
- Stomach accepts up to 300cc of liquid

VERSATILITY

- Compact & portable

WHAT'S INCLUDED

Male Torso & Support Base
Drain Tube
Funnel
Plastic Cup

Tube Feeding Routes Panel
Chest Sheet
Instruction Manual
Lubricant

Paracentesis Trainer

60100

60111



This trainer fulfills the fundamental component of Internal Medicine Training in diagnostic and therapeutic techniques of paracentesis. Both landmark and ultrasound guided techniques can be practised.

Trainees are able to identify the echogenic anatomy, enabling them to learn how to safely insert a needle or catheter into the peritoneal cavity.



■ Trainer with skin removed, showing internal anatomy
■ Catheter insertion for therapeutic drainage
■ Needle insertion for diagnostic purposes
■ Ultrasound guided technique

QUALITIES

ANATOMY

- Torso featuring bony landmarks (pubis symphysis, iliac crest) & umbilicus
- Internal anatomy includes:
 - Liver
 - Spleen
 - Bowel
 - Floating bowel

REALISM

- Realistic tissue and needle response

KEY FEATURES

- Palpation or ultrasound techniques can be practised (side by side)
- Internal echogenic anatomy to allow recognition of landmarks under ultrasound
- Two 3.5 litre chambers can be filled with water for practise drainage
- Cost effective consumable pads

VERSATILITY

- Self-sealing pads, withstanding up to 200 needle or up to 100 rocket catheter insertions
- Ability to insert & remove a drain
- Positions both supine & lying on side

SAFETY

- Latex free

CLEANING & CARE

- Skin surface is washable using soap & water

SKILLS

- Familiarity with the abdominal regions & underlying anatomy
- Palpation of anatomical landmarks
- Identification of ascites (change excess fluid)
- Identification of safe ultrasound guided needle & catheter insertion
- Insertion of needle into peritoneal cavity for therapeutic or diagnostic purposes
- Professional-to-patient communication

WHAT'S INCLUDED

Paracentesis Skin
Paracentesis Pads (x2)
Paracentesis Liver
Paracentesis Spleen
Paracentesis Bowel Insert (x2)
Paracentesis Floating Bowel (x2)
Paracentesis Clamping Frame (x2)
Paracentesis Large Volume Refill System
Base Unit
Carry Case

Patient Care Simulator “Yaye”

KKMW25

KYOTO KAGAKU



Yaye is an advanced, full-body nursing manikin designed for hands-on training in a wide range of skills required for day-to-day patient care. Suitable for teaching fundamental nursing skills to registered nursing students.

- Assessment of chest & abdomen
- Variable age, sex & personality
- IV route training
- Airway management & CPR

SKILLS

- Body positioning/patient handling/passive exercise
- Bed bathing & change of clothes
- Airway management
- CPR
- Assessment of chest & abdomen
- Oral & denture care
- Nasogastric tube placement
- Oxygen/nasal cannula placement
- Tracheotomy care & management
- Stomach pumping
- TPN care
- PEG care
- Stoma care
- Pressure ulcer care
- Subcutaneous injection
- Intramuscular injection
- IV insertion & care
- Male & female urinary catheterisation
- Enema
- Suppository insertion
- Perineal care
- Wound dehiscence care
- Wrapping of dressings

WHAT'S INCLUDED

- | | |
|---|--------------------------------------|
| Yaye Patient Care Manikin | Set of Simulated Faeces |
| Dentures | Lubricant (for Airway Suction etc.) |
| Wig (Black) | Lubricant (for Catheterisation etc.) |
| Face Mask (Young) | Irrigation Bag |
| Injection Pad (Median Vein) | Drainage Pump (Urinary Bladder) |
| Shoulder Injection Pads (x2) | Drainage Pump (Rectum) |
| Thigh Injection Pads (x2) | Drainage Hose |
| Hip IM Pads (x2) | Set of Pyjamas |
| Female Genitalia (Catheterisation) | Instruction Manual |
| Female Genitalia (Suppository Insertion/Digital Disimpaction) | |

QUALITIES

ANATOMY

- Interchangeable wigs, genitalia & masks to simulate a variety of patients

REALISM

- Simulating all the daily activities of patient care
- Enhanced Range of Motion (ROM) for better patient assessment & positioning

KEY FEATURES

- Soft & elastic abdomen allows for assessment of chest & abdomen
- Airway management & CPR

VERSATILITY

- Easily interchangeable male & female genitalia
- Suitable for postmortem care
- Provides training for all levels — from trainees to experienced staff

CLEANING & CARE

- Skin surface is washable using soap & water



Check limbsandthings.com for more information about optional consumables

Patient Care Simulator “Cherry”

KKMW22

KYOTO KAGAKU

Cherry is a basic, full body nursing manikin for hands-on training in a wide range of skills for nursing assistants and vocational nurses.



- Oxygen nasal cannula
- Subcutaneous injection
- Wound care pad
- Male and female genitalia

SKILLS

- Oral & denture care
- Nasogastric tube placement
- Oxygen/nasal cannula placement
- Tracheotomy care & management
- Stomach pumping
- TPN care
- PEG care
- Stoma care
- Pressure ulcer care
- Subcutaneous injection
- Intramuscular injection
- IV insertion & care
- Male & female urinary catheterisation
- Enema
- Suppository insertion
- Perineal care
- Wound dehiscence care
- Wrapping of dressings
- Subcutaneous injection

WHAT'S INCLUDED

Female Genitalia
Male Genitalia
Wound Care Pad
Cherry Patient Care Manikin
Femoral IM Injection Pad
Upper Arm IM Injection Pad
Bottle
Syringe

QUALITIES

ANATOMY

- Male & female genitalia

REALISM

- Seamless arms & legs enable realistic bed & foot bathing
- Joint articulation for patient handling & passive exercise

KEY FEATURES

- TPN and IV routes to simulate patients with catheter lines
- Pressure sores of different depths located at the scapula, greater trochanter, sacral bone & heel
- Subcutaneous & intramuscular injection pads accept liquid & can be squeezed out after use

VERSATILITY

- Easily interchangeable male & female genitalia
- Suitable for wide range of basic care
- Removable dentures

CLEANING & CARE

- Skin surface is washable using soap & water



Visit **limbsandthings.com**
for more information about optional consumables

BSS Day 1 Kit

50070



WHAT'S INCLUDED

Double Layer Bowel 30mm
BSS Lesion & Cyst
BSS Surgical Skills Board
BSS Tendon Repair Trainer
BSS Knot Tying Trainer
Skin Pad Jig with Skin Pad
BSS Soft Tissue Retaining Set
Haemostasis Pad

BSS Day 2 Kit

50071



WHAT'S INCLUDED

BSS Abscess
BSS Traumatic Wound with Simulated Foreign Bodies
BSS AOCT Pad
BSS AOCT Frame
Drain
8mm x 140mm Artery
8mm x 76mm Graft Patch

Double Layer Bowel



50061

30mm
OUTSIDE DIAMETER

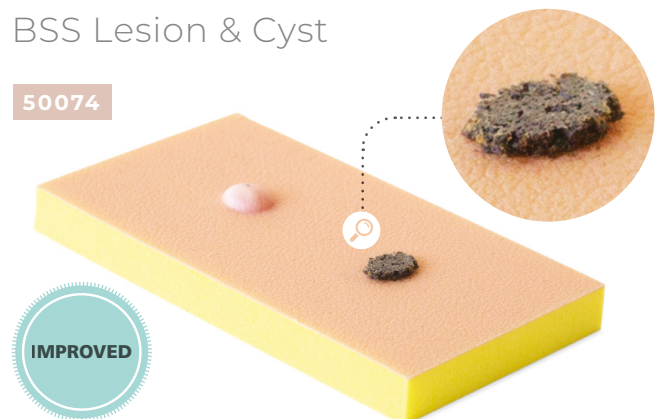
50065

20mm
OUTSIDE DIAMETER

Realistic 2 layer bowel simulation for training in anastomosis techniques. Both models are approximately 200mm in length.

BSS Lesion & Cyst

50074



For the practice of skin lesion removal, local anaesthesia and biopsy techniques. Cyst has a fragile epidermoid wall filled with simulated pus. This product is also available as part of the BSS Day 1 Kit (**50070**).

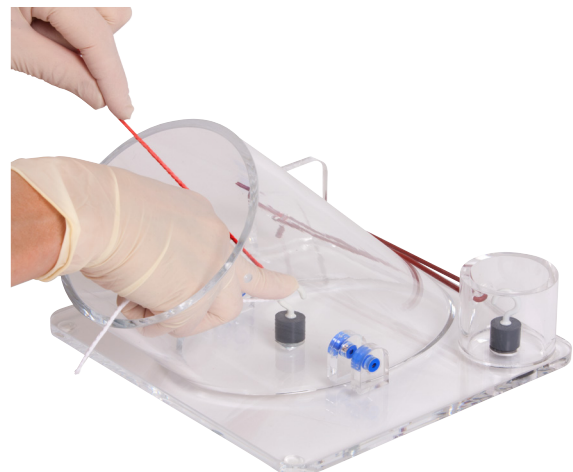
Knot Tying Trainer

50050

A comprehensive trainer for teaching all surgical knot tying techniques, including those specified in the GB and Ireland Intercollegiate Basic Surgical Skills Course.



Developed in collaboration with Professor Jonathan Beard, Northern General Hospital, Sheffield (UK) and Mr. John Rochester, Rotherham General Hospital (UK).



SUTURE TUTOR *PLUS*TM

All you need to learn basic instrument handling, knot tying, suturing and more.

SUTURE TUTOR *PLUS*TM is a complete training package to help medical students and healthcare professionals master fundamental hands-on skills relating to instrument handling, knot tying and suturing.

The product consists of two parts which can be purchased individually, or together as a complete package.

Online, Video-based Course



An online, video-based course that can be accessed anytime, anywhere. Developed in collaboration with Professors of Surgical Education Jonathan Beard and Roger Kneebone, the 11 module course closely follows the Intercollegiate Surgical Curriculum Programme.

- Unlimited access
- Explanatory videos use computer graphics for clarity
- Demonstration videos use clinical footage
- Practical videos use Limbs & Things products from the Hands-on Kit

SKILLS

- Handling of instruments
- Needles & sutures
- Knot tying
- Incision of skin & subcutaneous tissue
- Suturing techniques
- Suture aftercare
- Patient management & consent
- Scrubbing, gowning & gloving
- Cleaning a wound
- Local anaesthesia
- Other methods of wound closure

Hands-on Kit

STP-KIT

STP-KIT-DST



A Hands-on Kit including a professional skin pad, 10 sutures, basic knot tying kit and all necessary instruments to allow repeated practice of suturing techniques.

Can be purchased on its own or with the online course.



WHAT'S INCLUDED

Single Professional Skin Pad Mk 3 - Large
 Skin Pad Jig Mk 3
 Basic Knot-tying Kit
 Pack of 10 Sutures (non-sterile)
 Scalpel
 Dissecting Forceps
 Scissors
 Needle Holder

Ingrowing Toenail Trainer

80060

80061



The Ingrowing Toenail Trainer closely simulates an adult inflamed toe end and allows for procedures such as wedge excision, ring block and total ablation of the nail bed.

Ingrown toenail removal is a common practice for both general practitioners and family medicine practitioners and is an essential skill that is required in general surgery training such as the intercollegiate surgical curriculum.



SKILLS

- Ring block techniques
- Application of a tourniquet
- Total nail avulsion
- Phenolisation techniques
- Ablation of the nail bed
- Wedge excision - partial nail avulsion

WHAT'S INCLUDED

Toe Jig
Toe Ends (x3)

Wound Closure Pad

00042

00044

00041

00043

SMALL (x12) SMALL (x12)

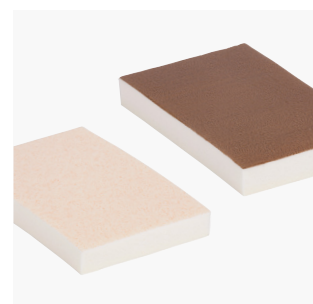
LARGE (x6) LARGE (x6)



A low cost, 1 layer pad, ideal for demonstrating, training and practising core skills associated with wound closure.

SKILLS

- Making an incision
- Application of skin adhesives
- Interrupted suturing & knotting
- Stapling



QUALITIES

REALISM

- Works with all major topical skin adhesives

KEY FEATURES

- An excellent starter pad for wound closure training
- Pad dimensions: large 145mm x 125mm, small 125mm x 72mm

VERSATILITY

- Use with the Skin Pad Jig Mk 3 (00550)

SAFETY

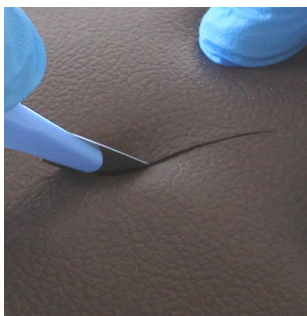
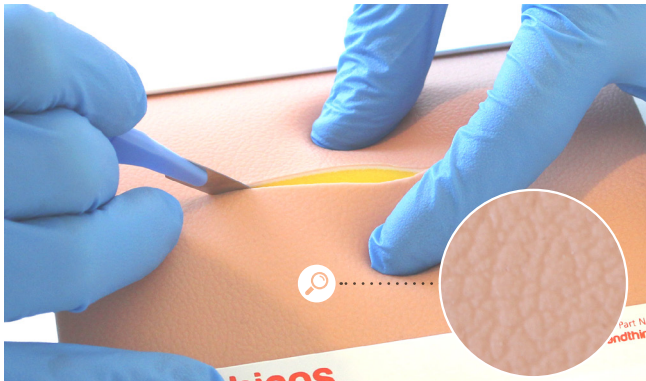
- Latex free

Professional Skin Pad

00091**00093****00092****00094**

SMALL (x4) SMALL (x4)

LARGE (x2) LARGE (x2)



An advanced 3 layer skin pad for demonstrating and practising a variety of incisions and a wide range of suturing techniques.

SKILLS

- Incisions: linear, ellipse, flaps, shaped
- Subcuticular undermining
- Simple & advanced interrupted suturing techniques
- Subcuticular suturing
- Continuous suturing
- Stapling
- Use of adhesive strips

QUALITIES

REALISM

- Improved, unidirectional skin texture
- Realistic tissue response with a similar drag & strength to human skin
- All layers have realistic retention of sutures

KEY FEATURES

- Pad dimensions: large 145mm x 125mm, small 125mm x 72mm

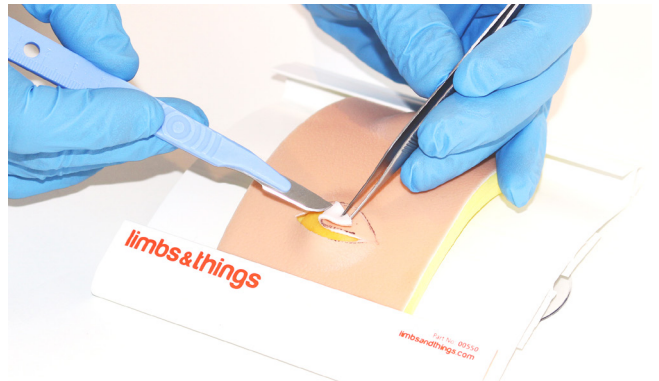
VERSATILITY

- Serves the needs of both specialist & beginner
- Use with the Skin Pad Jig (**00550**)

SAFETY

- Latex free

Lipoma Pad

00081

For practising the full lipoma removal procedure. 3 layer skin: epidermis, dermis and subdermal layer. Pad contains 2 lipomas.

SKILLS

- Designing the incision
- Marking out the lipoma
- Incising the skin
- Blunt dissection
- Removal
- Closure

QUALITIES

REALISM

- Improved, unidirectional skin texture
- Lipoma is consistent with that found in a patient
- Lipoma sited within the fat layer
- Precise replication of in-vivo adhesion
- All layers of tissue can be identified

KEY FEATURES

- Pad dimensions: 125mm x 72mm

VERSATILITY

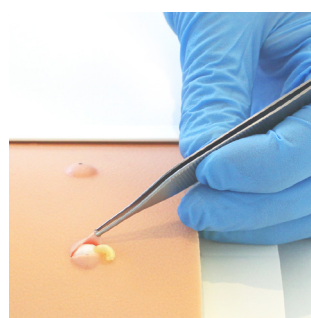
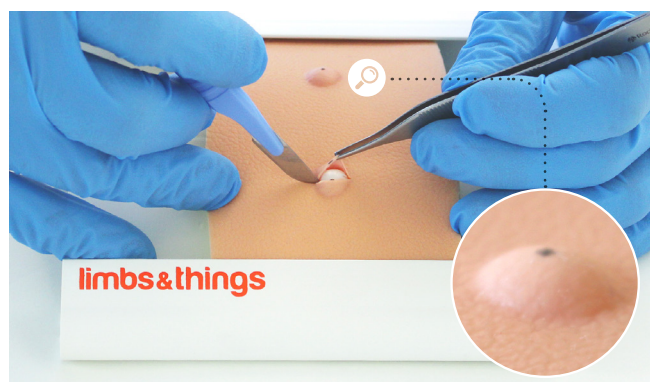
- Use with the Skin Pad Jig (**00550**)

SAFETY

- Latex free

Sebaceous Cyst Pad

00071



For practising the full sebaceous cyst removal procedure. A 2 layer skin pad with epidermis and subdermal layer. Contains 2 cysts.

SKILLS

- Marking out the cyst
- Planning & marking the ellipse
- Incising the skin
- Sharp dissection
- Blunt dissection
- Management of a burst cyst
- Removal
- Closure

QUALITIES

ANATOMY

- Improved, unidirectional skin texture
- 2 layer skin: epidermis & subdermal layer
- Contains 2 Cysts

REALISM

- Cyst is consistent with that found in a patient
- Cyst exhibits appropriate adhesion to other surrounding tissue
- Cyst sited immediately below skin layer & is attached firmly to its underside
- Fragile epidermoid wall filled with simulated pus

KEY FEATURES

- Pad dimensions: 125mm x 72mm

VERSATILITY

- Use with the Skin Pad Jig Mk 3 (00550)

SAFETY

- Latex free

Curettage, Snip & Shave Excision Pad

00104 SMALL (x4)



Combines a number of skin lesions (tags, naevi, seborrheic keratoses) for teaching superficial dermatological lesion removal techniques.

SKILLS

- Snip excision
- Shave excision
- Curettage

QUALITIES

REALISM

- Stretches to allow realistic extension of the tissue surrounding the skin tags during snip excision
- Stretches to allow realistic extension of naevi during shave excision
- Allows seborrheic keratoses to be removed using curettage technique

KEY FEATURES

- Cost effective: large pad with 4 skin tags, 4 naevi & 4 seborrheic keratoses. The small pad has 2 of each
- Pad dimensions: large 145mm x 125mm, small 125mm x 72mm

VERSATILITY

- Use with the Skin Pad Jig (00550)

SAFETY

- Latex free

BIRTHING SIMULATOR PROMPT FLEX RANGE

The **Birthing Simulator - PROMPT Flex** and its modules are anatomically correct and have been designed in collaboration with clinicians to aid the training and practise of normal and difficult births (including shoulder dystocia) to improve outcomes for mothers and babies during childbirth.



Explore the anatomy of PROMPT Flex outside the classroom and away from the trainer.



Augmented Reality (AR) allows learners to explore the trainer's internal anatomy on their smart device.

Additional modules

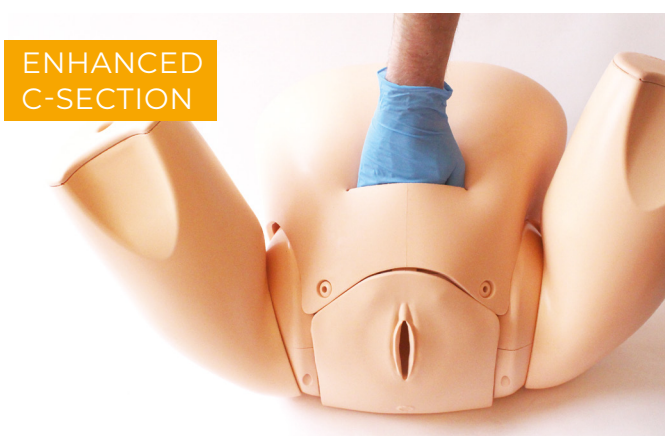
Fit either the Standard or the Advanced units allowing you to tailor your training needs.



PPH



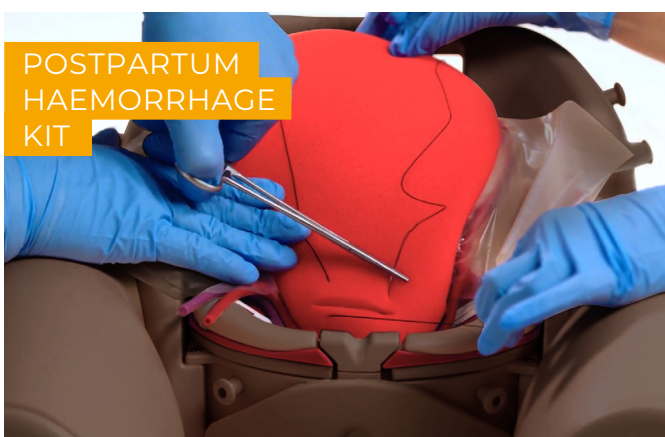
CERVICAL
DILATATION
& EFFACEMENT



ENHANCED
C-SECTION



ASSISTED
VAGINAL BIRTH



POSTPARTUM
HAEMORRHAGE
KIT



CERVICAL
CERCLAGE

* Find out more on our website

Clean Bleed™ Mat

This easy to setup and mess free product has the ability to create the impression of haemorrhages such as postpartum through a controlled flow into a sealed mat.



See page 64 for more details.

Birthing Simulator - PROMPT Flex - Standard

80100

80200

A modular birthing simulator allowing for numerous training scenarios.

Used either for stand-alone training or integrated into hybrid simulation, it is an ideal training solution for all skills relating to routine and difficult deliveries.



This model includes Augmented Reality

Birthing Simulator - PROMPT Flex - Advanced

80106

80206

Incorporates wireless force monitoring where force applied to the baby's head is measured during a shoulder dystocia drill. Works with an app with inbuilt scenarios allowing monitoring and recording of force, interventions made and time taken to deliver the baby.



Tablet not included
Download app at limbsandthings.com



This model includes Augmented Reality

QUALITIES

ANATOMY

- Birth canal & cervix
- Ischial spines & pubic bone
- Gynaecoid pelvis
- Articulating thighs
- IM injecting
- Fully articulated baby with detachable umbilical cord & placenta
- Baby includes clavicles, fontanelles & flexible head

KEY FEATURES

- Improved & more realistic pelvic floor
- Articulating thighs for McRoberts procedure
- Stretchable perineum
- Soft flexible birthing canal
- Additional modules to extend learning
- Optional lower legs for extended realism
- Optional wireless force monitoring for training in shoulder dystocia management

SAFETY

- Latex free

CLEANING & CARE

- Skin is washable using soap & water

SKILLS

STANDARD ADVANCED

- | | STANDARD | ADVANCED |
|---|----------|----------|
| • Communication & team work skills (SP) | ✓ | ✓ |
| • Normal | ✓ | ✓ |
| • Breech | ✓ | ✓ |
| • Shoulder dystocia management | ✓ | ✓ |
| • Instrumental (forceps & vacuum devices) | ✓ | ✓ |
| • Delivery of placenta | ✓ | ✓ |
| • Cord prolapse | ✓ | ✓ |
| • Urinary catheter placement | ✓ | ✓ |
| • IM injection pads | ✓ | ✓ |
| • Force feedback of baby's head | x | ✓ |
| • App with scenarios & force monitoring | x | ✓ |

WHAT'S INCLUDED

STANDARD ADVANCED

- | | STANDARD | ADVANCED |
|--------------------------------|----------|----------|
| Birthing Mother (+ Upper Legs) | ✓ | ✓ |
| Standard Baby | ✓ | x |
| Wireless Force Monitoring Baby | x | ✓ |
| Placenta | ✓ | ✓ |
| Abdomen for PROMPT Flex | ✓ | ✓ |
| Perineum and Birth Canal | ✓ | ✓ |
| Bed Straps | ✓ | ✓ |
| Lubricant | ✓ | ✓ |
| Wheeled Carry Case | ✓ | ✓ |
| Augmented Reality Mat | ✓ | ✓ |



AUGMENTED REALITY

NEW

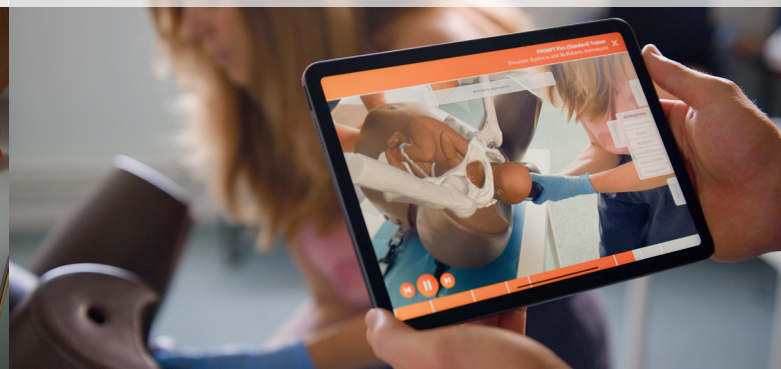


Interact with PROMPT Flex's internal anatomy on your smart device
No extra or ongoing costs and unlimited users

During independent study



With the trainer in class



By allowing learners to visualise anatomy, Augmented Reality (AR) bridges the knowledge gap between theory and practice.

AR shows how the mother and baby's anatomy behave during different birthing scenarios, breaking down concepts that are difficult to teach into visuals that are easy for students to grasp.

Multiple students can learn at once using AR, while others can get hands on with the trainer, easily creating engaging lessons.

FEATURES

- Interact with the PROMPT Flex internal anatomy
- Visualise different birthing scenarios with animations

VERSATILITY

- Run engaging & memorable lessons
- Multiple students learning at once
- Continued learning away from the model

SPECIFICATIONS

- Included with PROMPT Flex Standard & Advanced
- No extra or ongoing costs
- Unlimited users

Cervical Dilatation & Effacement Module (CD&E) - PROMPT Flex



80102

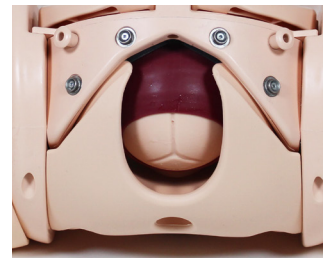
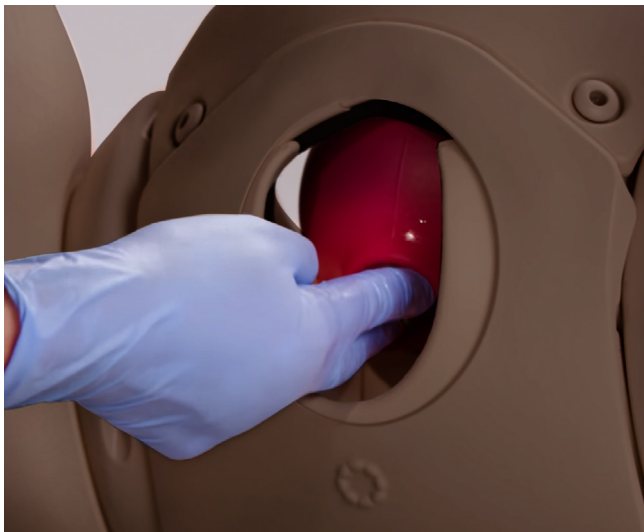
80202

Allows for training in assessment of both the latent and active first stages of labour.

This versatile module is an optional add-on to the PROMPT Flex Standard or Advanced.



Ideal for midwifery training.



Foetal station adjustment (-3 to +3) Cervical Dilation (1-10cm)

QUALITIES

REALISM

- Realistic representation of cervixes, including anterior lip, & presenting parts in soft birth canal, with palpable ischial spines

KEY FEATURES

- Inserts to represent early labour cervixes - effacement, dilation and ripeness in line with Bishop's scoring
- Positioning mechanism allows adjustment of station, dilation and tilt without removal from the simulator
- Dynamic positioning mechanism allows adjustment of dilation in active labour
- Markers allow tutor to read positioning in situ
- Numerous presenting part inserts including
 - flexed
 - deflexed
 - brow
 - face
 - breech
 - caput & moulding

VERSATILITY

- Presenting parts & cervix can be set up outside the model for demonstration, then placed inside for examination

SAFETY

- Latex free

SKILLS

- Assessment & Bishop's scoring of:
 - Cervical dilation (1-10cm)
 - Cervical effacement (0-100%)
 - Cervical ripeness/consistency (soft, medium, hard)
 - Cervical position (anterior, mid, posterior)
 - Foetal station (-3 to +3)
- Assessment of & artificial rupture of membranes
- Assessment of presenting part - flexed, deflexed, brow, face, breech, caput & moulding & caput formation

WHAT'S INCLUDED

Perineum
Pelvic Ring
Static Rig
Dynamic Rig
Set of 7 Latent Labour Cervixes
Dynamic Cervix
Set of 5 Presenting Parts
Set of 2 Difficult Labour Heads
Amniotic Membrane Set
Set of 3 Caputs (x2)

Assisted Vaginal Birth Module (AVB) - PROMPT Flex

80310

80410



This module has been developed to work with PROMPT Flex for the practice instrumental delivery procedures using both ventouse and forceps deliveries.

An innovative design allows the ventouse to realistically adhere to the baby's skin, while inserts within the uterus allow for forceps to be inserted and remain in place while the second blade is positioned and gives a realistic level of resistance whilst delivering the baby.



QUALITIES

REALISM

- Forceps are retained in place once inserted
- Realistic suction when attaching a ventouse
- Realistic resistance when delivering the baby

KEY FEATURES

- Tested with a wide range of instruments used during an assisted birth
- The perineum & inserts are designed specifically to give a realistic resistance during delivery
- Additional Baby Mask allows for successful suction when using a vacuum device
- Uterus holds the baby in the correct positioning, allowing for "hand's free" training can be used for both cephalic & breech deliveries

VERSATILITY

- This module is compatible with the PROMPT Flex Birthing Simulators, PROMPT Flex Baby models & Birthing Mother base units
- Allows for training in operative vaginal births, including: forceps delivery, ventouse delivery (Kiwi™ cup), breech delivery with Pipers forceps

SAFETY

- This product is latex free

SKILLS

- Direct cephalic delivery with the use of both forceps & ventouse
- Forceps – Classical style (Simpson, Elliot, Tucker Mc-Lane etc.)
- Ventouse (Kiwi™ Cup)
- Breech delivery (Pipers forceps)
- Rotational delivery (Kiellands, Kiwi™ cup)
- Other devices (OdonAssist™)
- Teamwork & human factors training in Assisted Vaginal Birth

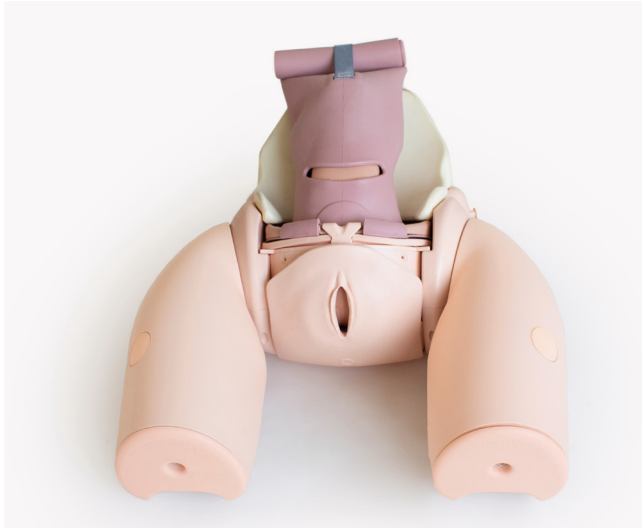
WHAT'S INCLUDED

Uterus for AVB
Perineum for AVB
Baby Mask for AVB
Foam Inserts for AVB
Foam Uterus Support

Enhanced Caesarean Section Module (ECSM) - PROMPT Flex

80300

80400



Ideal for practising the necessary skills required when performing both routine and complex caesarean section. Trainees can have exposure to delivering a difficult baby such as an impacted foetal head (IFH), or a transverse lie.

A pre-incised abdomen allows for repeated delivery practice to help improve confidence and familiarity of manoeuvres.

The module can be used to practise any of the following methods of delivering a deeply impacted foetal head:

- Manual cephalic extraction manoeuvres
- Vaginal push up
- Reverse breech extraction (pull technique)
- Patwardhan's technique

QUALITIES

REALISM

- Abdominal skin has realistic appearance, fat layer & feel of at-term abdomen
- Realistic feel of uterus interior during delivery
- Head & shoulders present at realistic level in relation to the uterine incision

KEY FEATURES

- Uterus holds baby firmly in position for cephalic, breech & transverse presentations
- Fundal pressure can be applied to aid delivery of the baby for IFH manoeuvres
- Pre-incised skin allows easy repeat delivery practice
- Realistically mimics the restrictive space of the pelvic inlet for IFH manoeuvres
- Accommodates retraction using metal, plastic or rubber retractors

VERSATILITY

- Allows for training in routine & complex caesarean section at full dilation

SAFETY

- Latex free

SKILLS

- Cephalic & breech delivery
- C-section at full dilation:
 - Head disimpaction using vaginal push methods
 - Use of balloon disimpacting device
 - Reverse breech extraction
 - Patwardhan's techniques
- Transverse lie
- Instrument assisted C-section delivery
- Delivery of the placenta for routine C-sections
- Teamwork & human factors training in emergency C-section

WHAT'S INCLUDED

Perineum
 Uterus for Caesarean Section Module
 Impacted Foetal Head Uterus
 Pre-incised Delivery Skin
 Cervix for Caesarean Section Module
 Foam Uterus Support
 Pelvic Floor

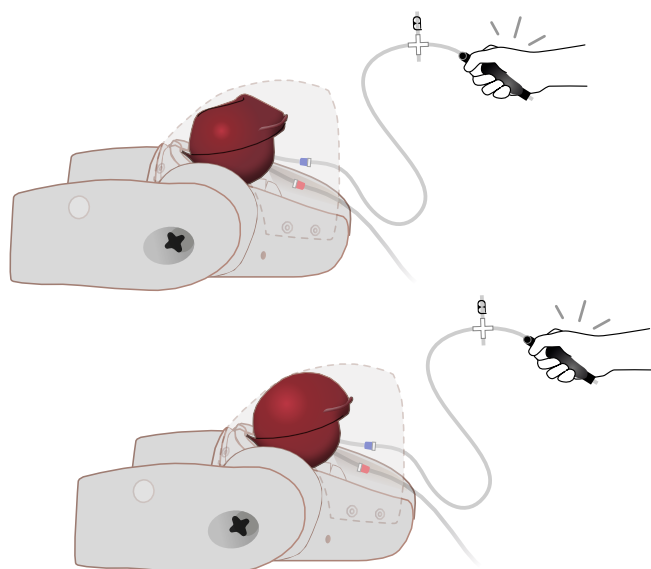
Postpartum Haemorrhage Module (PPH) - PROMPT Flex

80101

80201

This module is an optional add-on for the Standard or Advanced Birthing Simulators.

It allows training in the management of post-partum bleeding, and offers a realistic simulation of an atonic and contracting uterus.



SKILLS

PPH MODULE	PPH KIT
80101	80112
80201	80212

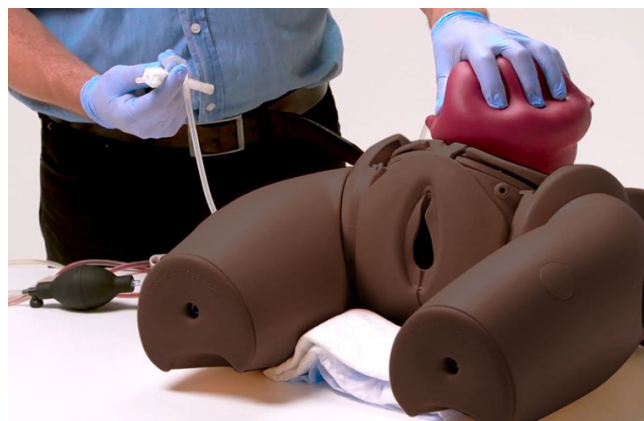
Management of postpartum bleeding:

• Fundal massage	✓	✓
• Bi-manual compression	✓	✓
• Haemostatic balloon insertion & management	✓	✓
• Communications skills with mother	✓	✓
• Intramuscular injection	✓	✓
• Estimating blood loss	✓	✓
• Common types of compression suture	x	✓
• Dissection of broad ligament	x	✓
• Ligation of uterine arteries	x	✓



WHAT'S INCLUDED

PPH Uterus Assembly - PROMPT Flex
Concentrated Venous Blood - Starter Pack (x2)
PPH Blood Container - PROMPT Flex



QUALITIES

REALISM

- Atonic uterus can simulate contraction on fundal massage

KEY FEATURES

- Blood loss of up to 2 litres can be simulated
- Air bulbs are used to stimulate blood flow & control atonic state of the uterus

VERSATILITY

- Can be quickly & easily fitted into the birthing mother to allow simulation of situations where bleeding occurs directly after delivery

Postpartum Haemorrhage Kit - PROMPT Flex

80112

80212

For the management of postpartum bleeding and care including performing a compression suture and ligating the uterine artery.

KEY FEATURES

- Includes the PPH module
- Has a uterus suitable for all common types of compression sutures
- Practice ligation of the uterine artery
- Dissection of broad ligament



WHAT'S INCLUDED

Postpartum Haemorrhage Module - PROMPT Flex
Compression Suture Uterus (Pack of 2)
Pre-incised Delivery Skin for PROMPT Flex

Clean Bleed® Mat

70400



Integrate blood loss into your birthing scenarios effortlessly



Use the Clean Bleed Mat in conjunction with our PROMPT Flex Birthing Simulator to create realistic haemorrhage scenarios.

Adding blood to birthing simulation encourages trainees to consider blood loss as a key indicator of a patient's condition and practice identifying when different interventions need to be made.

4 WAYS THE CLEAN BLEED MAT MAKES FLUID SIMULATION SIMPLE

- Easy set-up
- Controlled speed: use the dial to adjust flow
- No mess: the bleed is contained in a sealed mat
- Reusable: pads and blood can be used multiple times

SKILLS

- Recognition of blood loss
- Visual assessment of severity
- Perform Quantification of Blood Loss (QBL)
- Initiate interventions
- Evaluate success of interventions

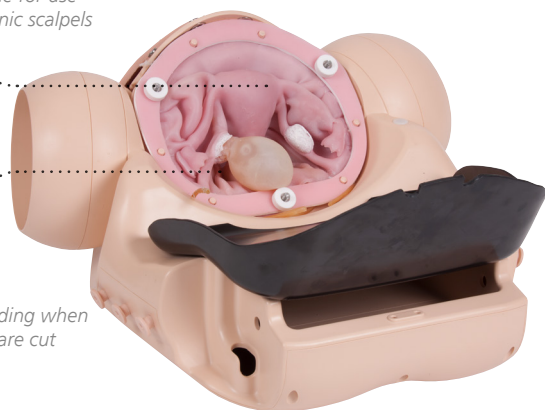
Surgical Female Pelvic Trainer (SFPT) Mk 2

60251

A simulator for training in a wide range of laparoscopic gynaecological surgical techniques and procedures. The uterus component can be easily removed and replaced after use.

Compatible for use
with harmonic scalpels

Lifelike bleeding when
arteries are cut



Abdominal Skin with realistic tissue properties for trocar insertion

Realistic representation of uterus & pathologies



QUALITIES

ANATOMY

- Includes:
 - Uterus
 - Cervix
 - Bladder
 - Ovaries
 - Ureters
 - Ovarian artery
 - Dunn's pouch
 - Ovarian cyst
 - Fibroid
 - Cardinal ligament
 - Abdominal skin with realistic tissue properties for trocar insertion
 - Pelvic floor with sympathetic features
 - Vagina
 - External introitus
 - Fallopian tube
 - Broad ligament
 - Uterine artery
 - Pouch of Douglas
 - Bowel & sigmoid
 - Ectopic pregnancy
 - Uterosacral ligament

REALISM

- Insufflation of abdomen is represented

KEY FEATURES

- Provides practice & role playing for gynaecological perioperative teams
- Includes a realistic vaginal canal & cervix for inspection, in which a uterine manipulator can be used
- Realistic bleeding when arteries are cut

VERSATILITY

- Compatible for use with harmonic scalpels

SAFETY

- Capsule in uterus contains latex

SKILLS

- All skills relevant to performing the following procedures:
 - Salpingectomy
 - Myomectomy
 - Hysterectomy
 - Salpingostomy
 - Cystectomy
 - Oophorectomy
- Dissection down to & location of ureters
- Insertion & use of uterine manipulator
- Working with various gynaecology instruments
- Identification of anatomical landmarks

WHAT'S INCLUDED

- SFPT Mk 2 Abdomen
- SFPT Mk 2 Surgical Uterus
- SFPT Mk 2 Abdominal Skin Pad
- SFPT Mk 2 Perineum
- SFPT Mk 2 Bowel
- Venous Blood Starter Kit
- SFPT Mock Blood Kit (includes reservoir and pump)
- Blunt Dispensing Needle and Syringe

CONSUMABLES

- 60256 SFPT Uterus (x5)
- 60257 SFPT Uterus (x10)
- 00021 Concentrated Venous Blood

Patents granted

- US6336812 • EP099027 • DE69804793 • CA 2293585
- ZL98806331 • HK1023832 • 755575 Australia

Mediolateral Perineal Repair Trainer



61141

61151



Midline Perineal Repair Trainer

61140

61150



This model allows trainees to learn the suturing techniques for repairing a 1st or 2nd degree perineal repair. The fabric construction can accommodate repeated early learning training ideal for skill acquisition.

SKILLS

- Recognition of internal anatomy
- Tissue handling
- Classification of injury
- Repair of a lacerated perineum

QUALITIES

ANATOMY

- Hymenal remnants, vaginal mucosa, perineal skin, perineal dermis, perineal muscles & palpable anal sphincter

KEY FEATURES

- Durable insert for cost-effective procedural training
- Anatomically accurate, key anatomical layers can be sutured
- Illustration pack representing each degree of perineal trauma to aid identification of key landmarks & internal anatomy

VERSATILITY

- Can be used alongside PROMPT Flex by placing in front of the birthing mother to add further realism
- Quick & easy to set up
- Clamps provided to secure trainer to benchtop
- Compact & portable
- Available in either Midline or Mediolateral presentation for regional variation

WHAT'S INCLUDED

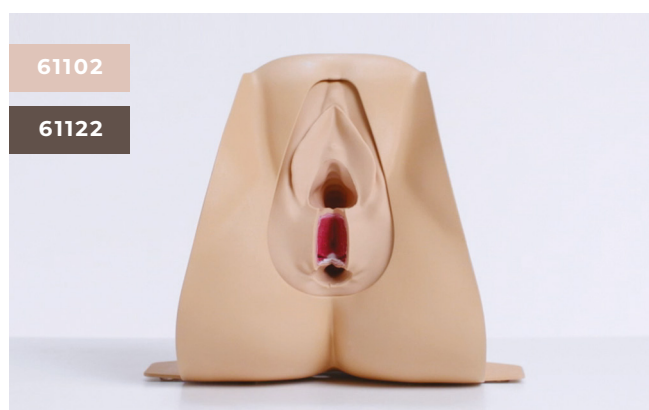
Midline Repair Pad (x1) **OR** Mediolateral Repair Pad (x1)

Perineal Repair Stand with Clamps

Perineal Repair Block Loading Frame

Perineal Repair Illustration Pack

Anal Sphincter Repair Trainer



This model allows trainees to learn how to perform a 4th degree perineal repair. A stand accommodates one anal sphincter repair block.

SKILLS

- Recognition of internal anatomy
- Tissue handling
- End-to-end repair of the external anal sphincter
- Overlap repair of the external anal sphincter
- Repair of the internal anal sphincter & anal mucosa

QUALITIES

ANATOMY

- Hymenal remnants, vaginal mucosa, perineal skin, perineal muscles, external anal sphincter, internal anal sphincter, anal mucosa & pararectal fat

REALISM

- Soft skin with a similar drag & strength to human skin

KEY FEATURES

- Anatomically accurate, all key anatomical layers can be sutured
- Illustration pack representing each degree of perineal trauma to aid identification of key landmarks and internal anatomy

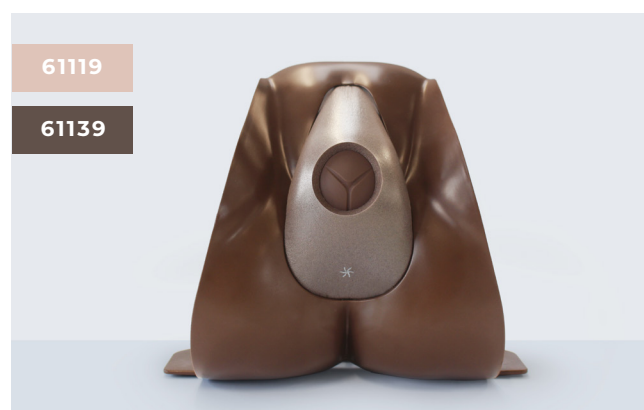
VERSATILITY

- Can be used with a simulated patient
- Quick & easy to set up
- Clamps provided to secure trainer to benchtop
- Compact & portable

WHAT'S INCLUDED

Anal Sphincter Repair Block (x2)
Perineal Repair Stand with Clamps
Perineal Repair Block Loading Frame
Perineal Repair Illustration Pack
Water Based Lubricant

Episiotomy Trainer



This cost effective model is designed to be used with the Perineal Stand in a classroom setting to ensure acquisition of confidence in the training of episiotomy.

It offers repeatable training and contains an illustration pack that supports trainees in gaining confidence in performing this procedure.

SKILLS

- Identification of fontanelles
- Handling of a stretched perineum
- Reducing the risk of damaging the baby or mother
- Infiltration of perineum prior to episiotomy
- Performance of mediolateral (or midline) episiotomy
- Use of instruments

QUALITIES

REALISM

- Realistic representation of tissue to represent a stretched perineum

KEY FEATURES

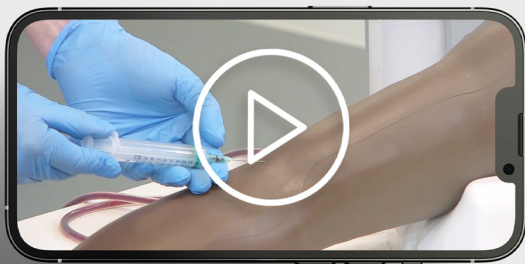
- Baby head has realistic look and feel, providing landmarks and appropriate tactile response when inserting fingers to guard the baby's head
- Repair tape increases the longevity of the episiotomy pad, allowing for multiple uses per pad
- Illustration pack to help trainees get familiarised with key landmarks and where to place the cut

WHAT'S INCLUDED

Episiotomy Incision Pad (x2)
Perineal Repair Stand with Clamps
Episiotomy Repair Tape (x24)
Episiotomy Baby Head
Episiotomy Illustration Pack

Hints & Things

Your video guide to easy product set-up & use



For smooth training sessions with our models visit our Hints & Things playlist on YouTube.

Our series of videos answer your how-to questions on Limbs & Things simulation with useful tips & tricks to get the most out of your models.

limbsandthings.com

Infant Hip Exam



42000

42010

42004

42014

Our Infant Hip Exam (IHE) Trainer has been designed to meet the specific requirements of healthcare professionals training to identify and diagnose developmental dysplasia of the hip (DDH). This simulator represents a 1-month-old female and can simulate a normal, dislocated and

dis-locatable or 'lax' hip joint, allowing for practice of Barlow and Ortolani manoeuvres as well as the Galeazzi sign. The baby has been designed with interchangeable normal and abnormal leg modules and one upper torso.



QUALITIES

ANATOMY

- Palpable greater trochanter on the left and right femurs to aid correct hand placement
- Articulating hip, knee & ankle joints for the Barlow & Ortolani manoeuvres and Galeazzi sign

REALISM

- Realistic 'clunk' can be felt when resetting the dislocated hip
- Anatomically accurate 1-month-old female infant

KEY FEATURES

- Quick & easy to set up
- Durable model that allows for repeated training using the Barlow & Ortolani manoeuvres
- Normal hip module – allows trainees to understand the haptics of a normal hip
- Abnormal hip module - one hip that is dislocated & can be manoeuvred into & out of the correct position using the Barlow/ Ortolani technique & one dis-locatable or 'lax' hip that can be dislocated & relocated when using the Barlow/ Ortolani technique
- Articulating knee & ankle joints mean the baby's feet can be placed flat replicating the Galeazzi sign
- Realistic weight to practice manoeuvring

VERSATILITY

- Interchangeable lower modules allow trainees to recognise normal hips as well as two types of abnormal hip joint

SAFETY

- Latex free

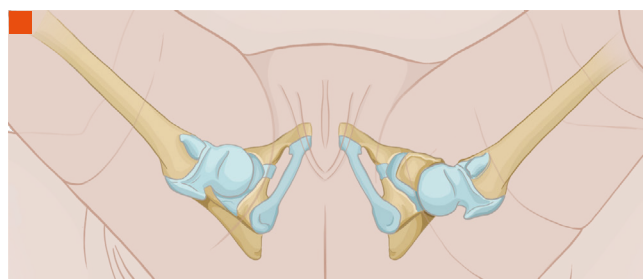


Illustration of internal hips & how they present in the model
Barlow manoeuvre
Galeazzi sign

WHAT'S INCLUDED

	42000	42004
	42010	42014
IHE Upper	✓	✓(x2)
IHE Lower Normal	✓	✓
IHE Lower Abnormal	✓	✓
IHE Illustration Card	✓	✓

TruBaby X

TCTB10001

TCTB10001DS

Trubaby X provides a complete solution for paediatric clinical skills training.

Incredibly lifelike with the appearance, weight, size and movement of a 5-month-old infant.



It is an ideal model for practicing Directly Observed Practical Skills (DOPS), Paediatric Advanced Life Support (PALS) and critical emergency medicine including infant airway management, CPR, IV cannulation and lumbar puncture.

QUALITIES

ANATOMY

- Palpable vertebrae landmarks including the iliac crest for performing lumbar puncture
- Contains the dorsal venous arch, great & lesser saphenous veins allowing needle cannulation at various locations
- Realistic rib structures including xiphoid process, clavicle & sternum
- Palpable landmarks in the 2nd & 5th intercostal space
- Features the tibial tuberosity & patella anatomy which facilitates for the identification of the proximal tibia intraosseous needle insertion site

REALISM

- Appearance, weight, size & movement of a 50th percentile 5-month-old infant
- Internal fluid flow for realistic blood flashback during IV cannulations

KEY FEATURES

- Includes the AirSim X Airway which provides realistic & durable training & comes with a 5-year warranty
- Accurate needle placement allows for positive LOR response & collection of simulated cerebrospinal fluid (CSF) during lumbar puncture
- Audible hiss when needle is successfully inserted for needle thoracentesis
- Facilitates either the Seldinger chest drain insertion technique or the needle thoracentesis approach for the treatment of a pneumothorax

VERSATILITY

- Interchangeable male & female genitalia for urethral catheterisation
- The model has been designed as fully interchangeable, all the parts are cost effective & can be replaced quickly when required. Initial set-up time is less than 5 mins



- Airway Intubation
- IV cannula insertion
- Foley urinary catheterisation
- Lumbar puncture

SKILLS

- Airway management
- Peripheral venous cannulation
- Lumbar puncture
- PICC line insertion
- Needle thoracentesis & chest drain
- Urethral catheterisation (male & female)
- CPR
- IO tibia

WHAT'S INCLUDED

- TruBaby X Model
- Needle Decompression Inserts (x1 Left & x1 Right)
- Chest Drain Inserts (x1 Left & x1 Right)
- TruBaby X IO Inserts (x3 Left & x3 Right)
- TruBaby X Lumbar Puncture Insert
- Male and Female Genitalia inserts
- TruBaby X Carrier Case
- Bottle of TruCorp Lubrication (100 ml)
- Bottle of Artificial Blood Concentrate (250ml)
- Syringes with Tubing & Quick Fit Connectors (x2)

TruBaby X Lite

TCTBL10001X

TCTBL10001XDS

TruBaby X Lite offers a focused training experience for beginners, and experienced learners looking to refresh their paediatric practical skills. This model provides a lifelike platform to practice essential skills, creating a cost-effective training solution.

QUALITIES

ANATOMY

- Realistic rib structure with xiphoid process & sternum for CPR training
- Features the tibial tuberosity & patella anatomy which provides a platform to identify the proximal tibia intraosseous insertion site
- Contains the dorsal venous arch & enables peripherally inserted catheterisation either through the basilic or cephalic veins

REALISM

- Appearance, weight, size & movement of a 50th percentile 5-month-old infant
- Internal fluid flow for realistic blood flashback during IV cannulations
- Realistic movement, including head tilt, chin lift & jaw thrust



SKILLS

	TruBaby X Lite	TruBaby X
Airway management	✓	✓
CPR	✓	✓
IO tibia	✓	✓
Peripheral venous cannulation	✓	✓
Urethral catheterisation (male & female)	✓	✓
Intramuscular injection	✓	✓
Lumbar puncture	×	✓
PICC line insertion	×	✓
Needle thoracentesis & chest drain	×	✓

Paediatric Lumbar Puncture Simulator II



Designed to represent a 7 to 10-month-old infant, this model is used to practise the lumbar puncture procedure.

WHAT'S INCLUDED

Paediatric Lumbar Puncture Block (12mm) (x2)

Paediatric Lumbar Puncture Block (17mm) (x2)

Baby Manikin

Stand

Irrigation Bag & Syringe

SKILLS

- Skin preparation
- Patient positioning
- Palpation of landmarks
- Sterilisation & local anaesthesia
- Needle positioning & insertion
- Cerebrospinal fluid (CSF) collection & pressure measurement

QUALITIES

REALISM

- Body of the manikin is soft & flexible

KEY FEATURES

- Realistic tissue resistance
- Iliac crests & spinous process are present & palpable

VERSATILITY

- Puncture block is quick & easy to replace
- Puncture sites not visible on skin
- Successful puncture is confirmed by the simulated CSF (water) flowing out
- CSF pressure can be measured with a manometer
- Variation of puncture depth

NCPR Simulator Plus II

KKMW21B

 KYOTO KAGAKU

This anatomically accurate, life-size model of a 4-week-old female newborn infant is ideal for training in a range of essential care skills.

SKILLS

- Injection (arm & leg) & catheterisation
- Umbilical catheterisation & care
- Nasogastric & orogastric tube feeding
- Airway suction
- Endotracheal tube placement
- Airway management
- Assessment of anterior fontanel
- CPR

QUALITIES

ANATOMY

- Arm - basilic, cephalic & dorsal veins
- Leg - saphenous & popliteal veins
- Umbilical cord
- Lungs
- Ribs
- Airway

REALISM

- Soft, lifelike umbilical cord can be cut & catheterised & is easy to replace
- Non-rigid, flexible neck
- Veins can be visualised using a real LED transilluminator

KEY FEATURES

- Supports 3 types of injection & catheterisation training: direct vision, transilluminated & ultrasound guided PICC

CLEANING & CARE

- Skin is washable using soap & water

WHAT'S INCLUDED

Newborn Care Baby	Syringe
Simulation Blood Tube (Red)	Lubricant
Simulation Blood Tube (Blue)	Plastic Jar
Simulation Blood	Instruction Manual

Paediatric Physical Examination Simulator

KKMW71

 **KYOTO KAGAKU**

Kyoto Kagaku's Paediatric Examination Simulator is designed to represent a 1 year old child, and allows for training in vital sign measurements and physical examinations.

This paediatric trainer comes complete with equipment to run training for infant examinations. Included are items of clothing for accurate patient handling, and a controller that can adjust the baby's vital signs.

SKILLS

- Measurement of respirations, heart rate, body temperature & blood pressure
- Auscultation of heart, breath & bowel sounds
- Palpation of the greater fontanel
- Observation of the nasal, ear & oral cavities, as well as observation of the eyelids

QUALITIES

ANATOMY

- Full body manikin of an infant aged around 1 year old, 67cm in height

KEY FEATURES

- Representative of a 1 year old infant, 67cm in height
- Ideal for training beginners in paediatric examinations

VERSATILITY

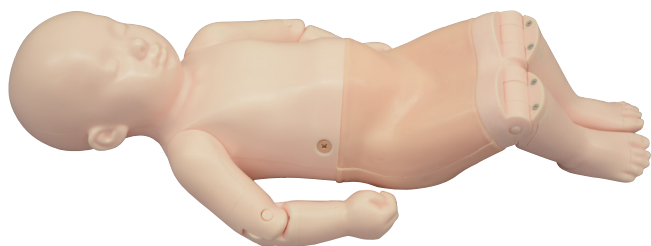
- Volume on the internal speaker and simulated stethoscope can be adjusted from 0-10
- Use the controller to select which part of the trainer you want to work on
- Vital sign settings can be hidden on the controller during training & examinations

WHAT'S INCLUDED

Infant Manikin	Remote Control
Wig	Power Cord
Mock Stethoscope	Set of Pyjamas
Mock Blood Pressure Monitor	Hat
Thermometer	Instruction Manual

Infant Hip Sonography Training Phantom

KKUS-13



 KYOTO KAGAKU

This realistic 6-week-old infant model enables trainees to repeatedly practise the key examination procedures of hip sonography, including the ability to identify standard plane for Graf's classification.

The ultrasoundable material allows learners to locate key landmarks, making it an ideal training tool for paediatricians, radiologists and orthopaedists.

SKILLS

- Setting and preparation for hip sonography
- Changing the position of the infant
- Communication and interaction with infant's guardian
- Correct use and positioning of the transducer
- Recognition of landmarks for hip sonography
- Interpretation and morphological classification of the sonogram

QUALITIES

REALISM

- Visualisation of standard, anterior and posterior planes
- Life-size manikin that allows for training in supporting and changing the position of the infant while interacting with his/her guardian

KEY FEATURES

- Features bilateral hips for examination
- Facilitates anatomical understanding of an infant's hip joint
- Movable arms to practise supporting, handling and repositioning of the infant

WHAT'S INCLUDED

Infant Hip Sonography Training Phantom
Storage Case
Instruction Manual

Paediatric FAST

KKUS-8



 KYOTO KAGAKU

With this phantom, which represents the torso of a 2-year-old patient, trainees are able to acquire basic pediatric abdominal ultrasound skills, as well as FAST/acute sonography techniques.

The Pediatric FAST/Acute Abdomen Phantom facilitates the practice of hands-on training using ultrasound to examine young patients. Using FAST procedures, trainees are able to identify internal hemorrhage at the perihepatic, perisplenic, pelvis, and pericardium area, whilst the ultrasound capabilities of the module allow for bowel intussusception, appendicitis and biliary dilatation recognition.

SKILLS

- Using FAST procedures to identify Internal hemorrhage at the perihepatic, perisplenic, pelvis, and pericardium area
- Sonography for acute paediatric patient, helping to identify bowel intussusception, appendicitis and biliary dilatation

QUALITIES

REALISM

- Represents the torso of a 2-year-old patient
- Life-size thoracoabdominal organs and bone structure

KEY FEATURES

- Ability to learn FAST procedures and identify pathologies that are commonly seen in paediatric patients

WHAT'S INCLUDED

Ultrasound Phantom
Storage Case
Tutorial Manual (DVD)

SHOULDER INJECTION TRAINER RANGE

This range combines physical practice with the guidance of technology. It provides a repeatable teaching and training platform for shoulder injections in the 4 most common sites.

Both models share a common torso but offer different levels of complexity to support trainees from early learning through to specialist level.

Shoulder Injection Trainer - Palpation Guided

70201

70220

70200*

70219*

*With tablet included

The accompanying Android app allows learners and teachers to visualise the underlying anatomy, as well as clearly signalling success.

SKILLS

- Practise multiple approaches to specific sites
- Identification of anatomical landmarks using palpation guidance
- 4 common injection sites:
 - Acromioclavicular joint
 - Glenohumeral joint
 - Bicipital groove
 - Subacromial space
- Rotation of the shoulder to locate head of the humerus

QUALITIES

REALISM

- Discrete muscle & skin layers for realistic needle feel

KEY FEATURES

- Palpation to find the four most common injection sites
- Instant feedback for the trainee when a site is correctly located
- Injections from multiple approaches to allow for different preferences
- Suitable for postgraduate learning
- App features full 360-degree view of underlying anatomy & injection sites to aid learning
- Cost effective replacement skins

VERSATILITY

- Each skin can withstand up to 500 injections per site (1 x spare shoulder skin supplied)
- Simple bluetooth connection between app & trainer
- Requires a 21 gauge needle (supplied)
- Batteries (2 x AA supplied) last for up to 500 hours

SAFETY

- Latex free

WHAT'S INCLUDED

Shoulder Module - Palpation Guided

Shoulder Skin (x1 spare)

Shoulder Torso

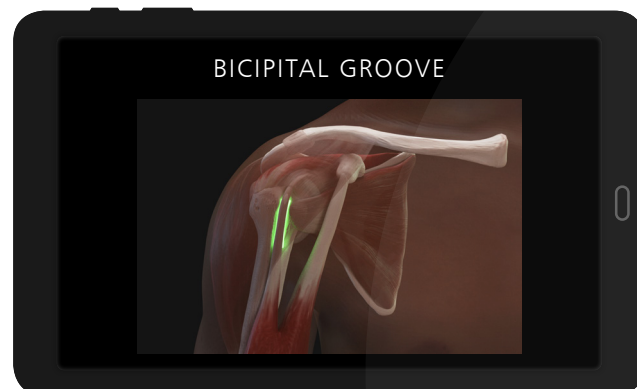
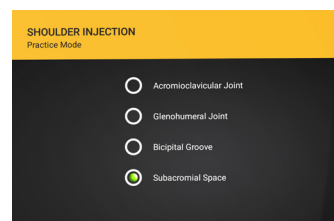
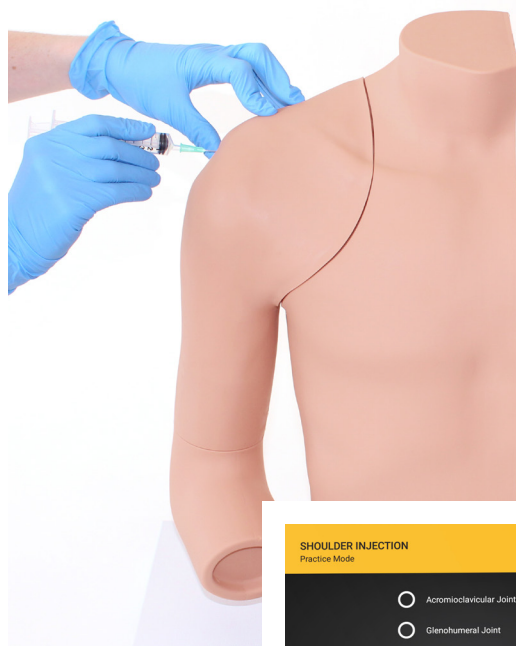
Needle Set

Android Tablet (optional)

Elbow

AA Batteries (x2)

Carry Case



The application includes interactive shoulder anatomy and links to injection technique guides.

Shoulder Injection Trainer - Ultrasound Guided

70202

70221



Caters for ultrasound guided techniques, as well as allowing injection and aspiration of fluids under ultrasound.

*With tablet included

SKILLS

- Patient positioning & management
- Identification of anatomical landmarks using ultrasound guidance
- 4 common injection sites:
 - Acromioclavicular joint
 - Glenohumeral joint
 - Biceps tendon sheath (which lies in the bicipital groove and surrounds the tendon)
 - Subdeltoid bursa (in the subacromial space)
- Competence using ultrasound technology to perform injections in different planes using different approaches
- View the suprascapular nerve under ultrasound



QUALITIES

REALISM

- Innovative materials within the shoulder create close to life ultrasound images

KEY FEATURES

- Echolucent materials visible under ultrasound represent the key internal landmarks
- Successful injection or aspiration can be confirmed by visualising fluid entering or leaving the site
- The quantity of fluid in the subdeltoid bursa can be adjusted, from no fluid present to a fluid-filled distension for differing skill levels
- Nerve block functionality - allows trainees to view & inject around the suprascapular nerve

VERSATILITY

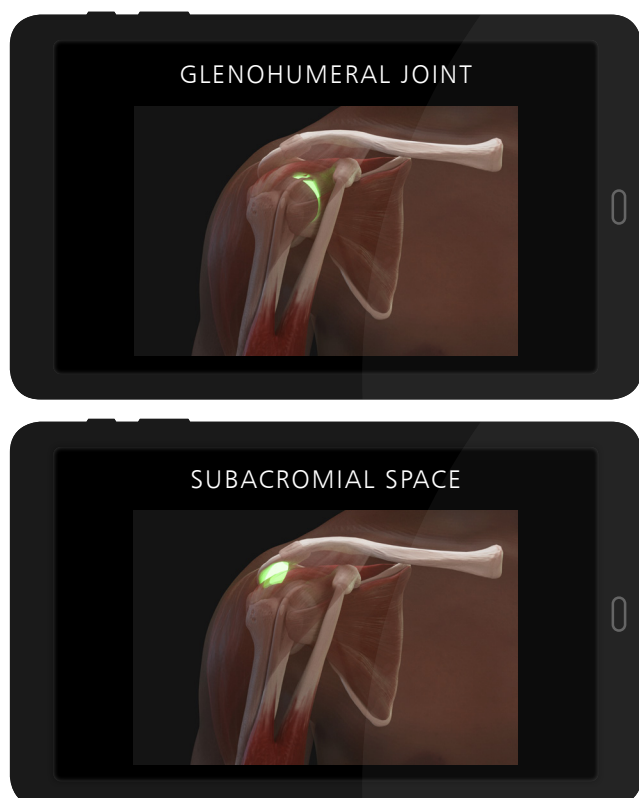
- Watertight and durable for up to 400 injections per site
- Altering the size of the bursa allows trainers to change the level of training difficulty (less fluid is more challenging to inject)
- Synovial fluid has a realistic colour

SAFETY

- Latex free

WHAT'S INCLUDED

Shoulder Module - Ultrasound Guided
Shoulder Torso
Needle Set
Synovial Fluid (250ml)
Elbow
Ultrasound gel
Carry Case



Knee Aspiration & Injection Trainer with Ultrasound Capability



70103

70114

An anatomically accurate adult knee model for aspiration of synovial fluid and joint injection from both the lateral and medial aspects, using ultrasound-guidance or palpation.

The robust sealed knee includes knee joint, patella, patellar tendon and the suprapatellar space.

SKILLS

- Injection into joint cavity
- Aspiration of synovial fluid from both the lateral & medial aspects
- Competence using ultrasound technology to perform systematic scanning techniques & examination of the knee joint
- Identification of anatomical landmarks using ultrasound guidance or the palpation method
- Patient positioning & management
- Recognition of joint effusion
- Ballottement of the patella

ANATOMY

- Key anatomical landmarks are realistic to palpate:
 - Skin
 - Subcutaneous fat, quadriceps tendon & patellar ligament
 - Prefemoral, suprapatellar & hoffa (infrapatellar) fat pad
 - Femur
 - Medial & lateral collateral ligament
 - Tibia
 - Patella
 - Joint space & synovial recess
 - Meniscus
 - Muscle mass of quadriceps



Key internal landmarks visible under ultrasound



QUALITIES

REALISM

- Discrete muscle & skin layers provide realistic tissue & needle response
- Anatomically accurate synovial sac & palpable patella
- Realistic colour & consistency of synovial fluid

KEY FEATURES

- 1000+ stabs per module with 21 gauge needle
- Precise, palpable anatomy with bony landmarks
- Robust, sealed knee unit that holds all anatomy
- Key internal landmarks visible under ultrasound
- Compatible with all standard ultrasound machines
- Echolucent material allows aspiration & injection under ultrasound-guidance
- Suitable for undergraduate & postgraduate medical study
- Knee skin is watertight

VERSATILITY

- Caters for ultrasound-guided technique as well as palpation
- Can be used with leg supports for supine position, or without leg supports for side of bed position
- Separate fluid bag & stand ensure the model is easy to use and mobile
- Indicator on fluid bag to prevent overfilling

SAFETY

- Latex free

WHAT'S INCLUDED

- Ultrasound Knee Module for Aspiration & Injection
- Fluid Bag & Stand
- Synovial Fluid (including Syringe)
- Needle Set – 3 Green Needles, 1 Syringe, 1 Sharps Bin
- Leg Unit, including Removable Supports
- Carry Case

Hand & Wrist Injection Trainer

70230*

70232

*With tablet
included

Suitable for all levels of training, the Hand & Wrist Injection Trainer allows trainees and clinicians to practise and teach injections in five different locations (carpal tunnel, De Quervain's sheath, trigger finger, first carpometacarpal joint and the distal radioulnar joint). The model also highlights when incorrectly injected, ensuring trainees learn to avoid the median nerve.

The trainer comes equipped with an optional Android tablet, which works in unison with our newly developed app. The app, coupled with innovative sensory technology, provides learners with wireless, real-time feedback from the procedure.

SKILLS

- Model allows for injection into:
 - Carpal tunnel
 - De Quervain's sheath
 - Trigger finger
 - 1st carpometacarpal joint
 - Distal radioulnar joint
- Patient positioning & management
- Identification of anatomical landmarks

ANATOMY

- Injection sites:
 - Carpal tunnel
 - De Quervain's sheath
 - Trigger finger
 - First carpometacarpal joint
 - Distal radioulnar joint
 - Median nerve
- Bone structures:
 - Radial styloid
 - Ulnar styloid
 - Trapezius and scaphoid
 - First carpometacarpal joint space
 - Distal radioulnar joint space
 - Lister's tubercle
- Internal product anatomy:
 - Palmaris longus
 - Flexor carpi radialis
 - Extensor digitorum group
 - Extensor digiti minimi
 - Abductor pollicis longus
 - Extensor pollicis brevis
 - Extensor pollicis longus



QUALITIES

REALISM

- Interactive model anatomy
- Anatomically correct
- Includes important ligament & skeletal structures

KEY FEATURES

- Facilitates injection in 5 key sites
- Presence of median nerve allows for negative feedback
- New app provides interactive real-time feedback
- Each site can withstand over 200 injections
- Skin can be easily removed & changed

VERSATILITY

- Lightweight & easily portable
- App can be set to English UK, English USA, French, Mandarin, Spanish, German & Russian

CLEANING & CARE

- Skin surface is washable using soap & water

SAFETY

- Fluid should not be injected into any of the sites, due to the electronics contained
- Latex free

WHAT'S INCLUDED

- Hand & Wrist Model
- Hand & Wrist Skin (1x spare)
- Android Tablet (optional)
- Needle Set – 3 Orange Needles, 1 Syringe, 1 Sharps Bin
- AA Batteries (x2)

Elbow for Joint Injection



For practising soft tissue joint injection used for the treatment of injuries and arthritis. The arm is presented for the treatment of both golfer's and tennis elbow.

SKILLS

- Patient posture & management
- Palpation techniques
- Identifying anatomical landmarks & painful areas
- Injections for:
 - Tennis elbow (lateral epicondylitis)
 - Golfer's elbow (medial epicondylitis)
- Training in fan or cone infiltration techniques

QUALITIES

REALISM

- Flexed right elbow, which rotates on the stand

KEY FEATURES

- Easy-to-use feedback Console: LEDs light up when correct injection sites have been acquired, point of maximal tenderness has been palpated & when the ulnar nerve has been hit

VERSATILITY

- Supplied with 'No Trace' marker (non-permanent rapidly fading ink) for illustrating underlying anatomical landmarks

SAFETY

- Latex free

WHAT'S INCLUDED

'No-Trace' Marker
 Elbow Needle Set
 Elbow Skin
 Elbow for Joint Injection
 Feedback Console with batteries

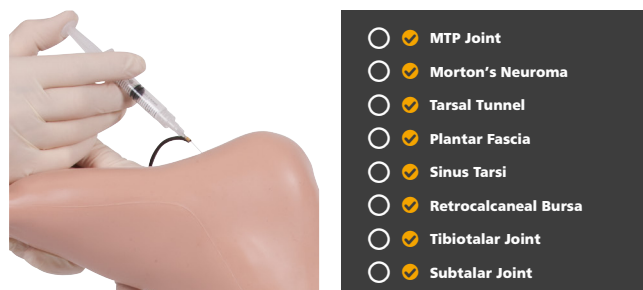
Foot & Ankle for Joint Injection



A foot and ankle for practising soft tissue injection for the treatment of injuries and arthritis. Designed in collaboration with Mr Jim Pickard and Dr Chris Davies from the University of Huddersfield, UK.

SKILLS

- Patient posture & management
- Palpation techniques
- Identifying anatomical landmarks
- Injection sites for:
 - Metatarsophalangeal (MTP) joint
 - Tarsal tunnel
 - Sinus tarsi
 - Tibiotalar joint
 - Morton's neuroma
 - Plantar fascia
 - Retrocalcaneal bursa
 - Subtalar joint



QUALITIES

ANATOMY

- Represents normal anatomy as required for palpation purposes

KEY FEATURES

- Easy-to-use feedback console: LEDs light up when correct injection sites have been acquired

SAFETY

- Latex free

WHAT'S INCLUDED

Foot & Ankle Needle Set
 Foot & Ankle Skin
 Foot & Ankle Musculature
 Foot & Ankle for Joint Injection
 Feedback Console with Batteries

Colles' Fracture Reduction Trainer

70250



The Colles' Fracture Trainer is an ideal training tool for learners looking to gain confidence in the reduction of Colles' fractures occurring at the distal end of the radius.

The portrayal of an elderly female arm coupled with a fractured distal fragment of the radius provides trainees with a platform for repeatable and consistent practice of manual Colles' reduction (closed) and plastering techniques. As is typical in a real-life emergency setting, the model allows trainees to perform visual inspections and identification before facilitating a team focussed Colles' fracture reduction.

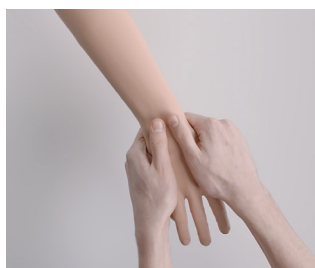
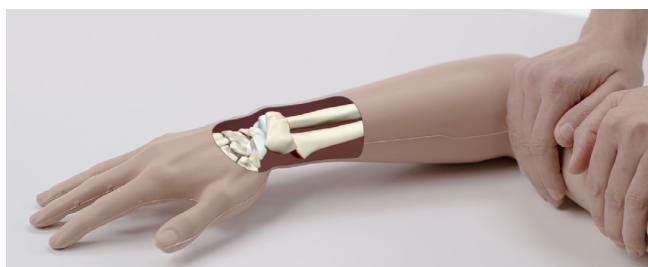
An adjustable tension mechanism allows trainers to alter the difficulty of the procedure for advanced learning.



Developed in collaboration with Dr Salwa Malik of Brighton and Sussex University Hospitals NHS Trust and Dr Yasir M. Shaukat of Surrey and Sussex Hospitals NHS Trust

SKILLS

- Visual inspection & identification
- Reduction of the fracture (closed reduction)
- Plastering techniques
- Adjustable tension for different difficulties to be simulated
- Teamwork & communication when reducing the fracture



QUALITIES

ANATOMY

- Fractured distal fragment of radius
- Head and body of the ulna

REALISM

- Realistic representation of a 'dinner-fork' deformity
- Lifelike haptic feedback when carrying out the procedure

KEY FEATURES

- Adjustable tension allows for progressive levels of difficulty
- Trainees can perform all three stages of reduction: exaggeration (to disimpact the fracture), traction & flexion
- Accommodates a number of plastering techniques, including: back slab, circular cast, sugar-tong splint & 3-point moulds
- Variable height stand allows users to adjust the height of the model for training ease
- Replaceable hand and skin

SAFETY

- Latex free

WHAT'S INCLUDED

- Colles' Fracture Arm (with skin included)
- Adjustable Height Stand
- Hex Keys (x2) - Large and Small

Pressure Sores Simulator



KKMW63 Pressure Sores Simulator is a decubitus care skills trainer for the new era. Its detailed representation allows for a wide range of training scenarios, including sore assessment, ultrasound assessment of deep tissue injury and necrotic tissue removal.

SKILLS

- Characterisation of pressure sores
- Assessment of deep tissue in sciatic area by ultrasound
- Prevention & treatment of pressure ulcers / cleansing / dressing
- Debridement of necrotic tissue

Freddie Fistula™ Skills Trainer



This realistic skills trainer facilitates the instruction and practice of the management of open abdominal wounds with active fistulas.

SKILLS

- Competency & confidence in stoma identification
- Identifying the source of effluent flow
- Management of drainage
- Employment of wound dressing materials & techniques (including negative pressure wound therapy)

Seymour II Wound Care Model™



Based on a 74-year-old patient, this model aids in the identification and assessment of wounds. Once the different aetiologies are understood, it can be used to discuss and devise treatment plans.

SKILLS

- Wound assessment (classification & staging)
- Wound cleansing
- Dressing techniques
- Measurement of wound length, depth, undermining & tunnelling
- Negative pressure wound therapy

'Wilma' Wound Foot™



Based on an 80-year-old patient for a true-to-life appearance, the model offers 20 conditions which allow for the identification and staging of wounds and their probable causes.

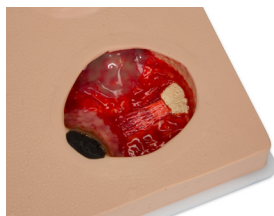
SKILLS

- Wound assessment
- Routine cleansing
- Dressing techniques

Pat Pressure Ulcer Staging Model

VTA0980

A unique, compact, comprehensive and realistic model displaying a range of pressure injuries. Recognition, routine cleansing and dressing changes can be taught and practiced on all wounds.



Medical Footcare Model

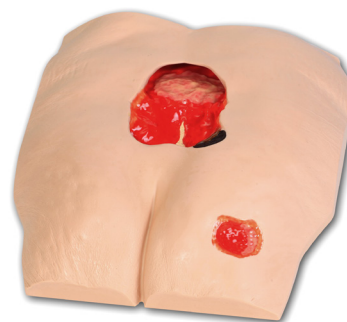
KKM66

 KYOTO KAGAKU


Stan Stage IV Pressure Injury Model™

VTA0970

VTA0975

VATA

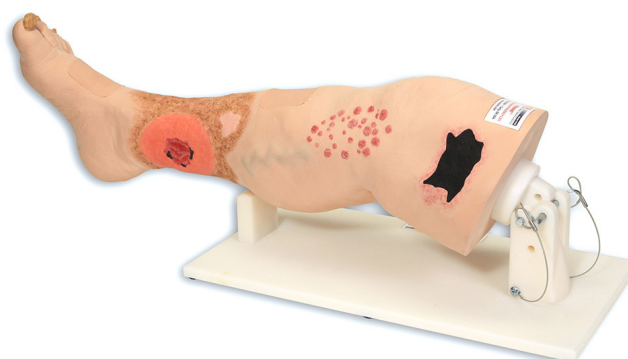
Annie Arterial Insufficiency Leg Model

VTA0555

VATA

Vinnie Venous Insufficiency Leg Model

VTA0550

VATA

eoSim™

The eoSim™ range of Laparoscopic box trainers allows trainees to practice their laparoscopic skills on a range of up to 18 curated tasks. Each box comes complete with four modular task bases, Laparoscopic instruments, an integrated digital camera and rechargeable light-source.



QUALITIES

KEY FEATURES

- Portable brief-case design for maximum portability
- Comes with everything you need
- Quick & easy to set up trainer
- Easily interchanged tasks
- Works with mobiles & tablets
- Built-in HD webcam for use with PC or Mac

SKILLS

- Minimally invasive surgery
- Psycho-motor skills associated with laparoscopic surgery
- Instrument handling
- Includes 18 different tasks to practice



WHAT'S INCLUDED

		EOSIM™ ELITE EO003	EOSIM™ INSTITUTION EO008	EOSIM™ INSTITUTION PLUS EO009
Box	eoSim Box Trainer (includes Camera and LED Light)	✓	✓	✓
Instruments	5mm Ratcheted Grasper	✓	✓	✓
	5mm Non-Ratcheted Grasper	✓	✓	✓
	5mm Scissors	✓	✓	✓
	5mm Knot Pusher	✓	✓	✓
	5mm Needle Holder	✓	✓	✓
Hardware	22 inch Monitor	×	✓	✓
	USB-C to HDMI Cable	×	✓	✓
	Lightning to HDMI Cable	×	✓	✓
	Height Adjustable Trolley	×	×	✓
SurgTrac Modules	SurgTrac Elite – 18 Tasks	✓	✓	✓

SurgTrac™

SurgTrac™ is an integrated skills training platform designed by surgeons, for surgeons. Mirroring Kolb's experiential learning circle, SurgTrac offers a curriculum of skills, instrument tracking software, objective performance feedback and metrics synced to an online portfolio, all through your mobile device.



TM

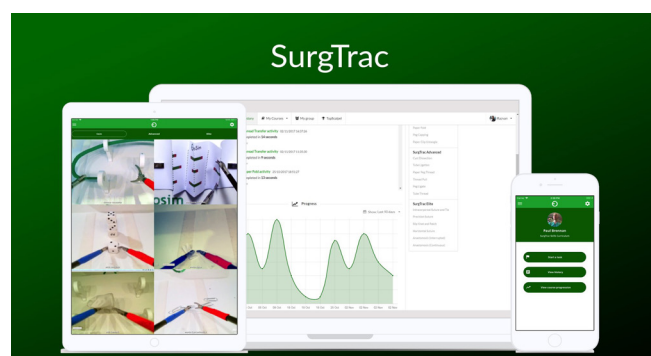
QUALITIES

KEY FEATURES

- Instrument tracking software records 20 metrics, generating instant quantitative performance feedback
- Additional formative, natural language feedback to support self-directed development
- Video recording of task attempts, which can be submitted for remote assessment by surgical trainers
- Evidence-backed by over 30 peer-reviewed validation studies
- Institutions can easily manage learner access and create groups using SurgTrac™ Manager

VERSATILITY

- Tiered curricula for advancing skill levels
- Curated courses of tasks for surgical specialties
- Available on iOS, Android, Windows & MacOS
- Connect with your colleagues & classmates in groups
- Invite trainees & track their progress on group dashboards
- Assign assessors to grade task submissions and track development



SKILLS

COURSE	TASKS	
CORE	Dice stacking	Precision cutting (paper)
	Paper fold	Thread transfer
	Peg capping	Paper clip untangle
ADVANCED	Tube ligation	Paper peg thread
	Thread pull	Peg ligate
	Cyst dissection	Tube thread
ELITE	Intracorporeal suture & tie	Slip knot & patch
	Anastomosis (continuous)	Anastomosis (interrupted)
	Precision suture	Horizontal suture

FUNDAMENTALS OF LAPAROSCOPIC SURGERY™

Approved by the SAGES-ACS FLS Committee, the FLS trainer system is the only approved hands-on equipment for training and assessment.

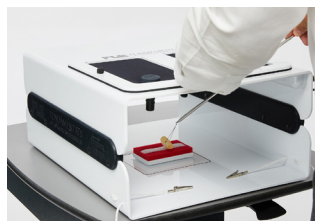
FLS is a joint educational offering of the American College of Surgeons (ACS) and the Society of American Gastrointestinal and Endoscopic Surgeons (SAGES). The FLS trainer system is appropriate for learning fundamental skills needed in many laparoscopic surgery specialties, including general surgery, gynaecology and urology.

The systems are complete with training box and TV camera alongside a range of tasks designed to develop the skills necessary to perform the fundamentals of laparoscopic surgery.



QUALITIES

- Skin frame constructed from durable neoprene
- 2 pre-incised holes for the trocars
- Trainer systems come with a TV camera
- Trainer design allows for ambient light to enter the training area
- Overhead LED lighting strip



SKILLS

- Laparoscopic surgery
- Tasks:
 - Peg transfer
 - Precision cutting
 - Ligating loop
 - Intra- and extra-corporeal knot tying



■ FLS Trainer Box **50302**

Economical and portable laparoscopic trainer box

■ FLS Trainer System **50304**

Incorporates all of the features of the FLS trainer box, plus a 19" television and Mobile SimCart

■ FLS All-In-One Trainer System **50306**

Includes everything from the FLS trainer system, plus ligating loops, sutures & a set of FLS approved instruments

Want to see our trainers in action?



Click on the Play icons on the product pages to watch a product video or head to the webpage.

UNDERGRADUATE MEDICINE

Designed to meet the core training needs and essential skills required at undergraduate level in the UK today.

CaRE

10



MALE RECTAL EXAMINATION

18



ABDOMINAL EXAMINATION

12



BREAST EXAMINATION

16



FEMALE PELVIC EXAMINATION

14



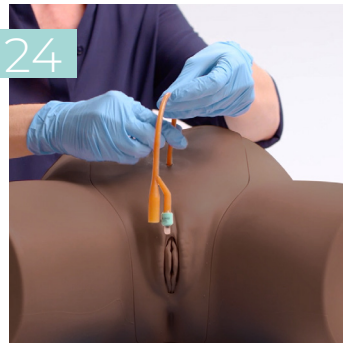
MALE PELVIC EXAMINATION

20



CATHETERISATION

24



BASIC SURGICAL SKILLS

51



VENEPUNCTURE

44



INJECTIONS

47



OTOLOGY & OPHTHALMOLOGY

22



EMST (ATLS)

This range offers a cost effective solution to the simulation equipment needed for ATLS 11th Edition making it easy for training providers to deliver this course.

CHEST TRAUMA MANAGEMENT

28



TRUJUNCTIONAL

32



CLEAN BLEED MAT

34



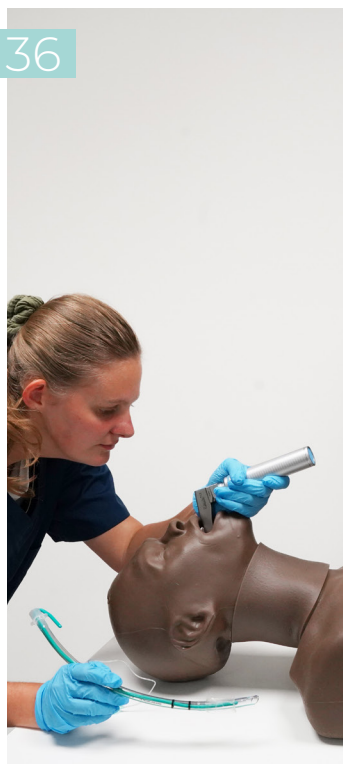
AIRSIM DIFFICULT AIRWAY

38



SMART AIRWAY

36



AIRSIM COMBO X

35



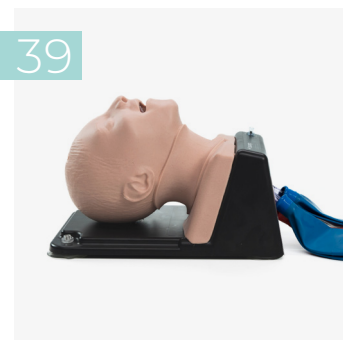
SMART AIRWAY CHILD

37



AIRSIM CHILD COMBO X

39



NURSE TRAINING

Nursing is at the heart of healthcare and these products reflect the core simulation training needs required for undergraduate and postgraduate nursing in the UK today.

CLEAN BLEED MAT



34

PELVIC EXAMINATION



14

BREAST EXAMINATION



16

MALE RECTAL EXAMINATION



18

ABDOMINAL EXAMINATION



12

VENEPUNCTURE



44

CATHETERISATION



24

PATIENT CARE



49

CaRE



10

WOUND CARE



80

OTOLOGY & OPHTHALMOLOGY



22

PARAMEDIC TRAINING

From patient assessment and basic care in years 1 & 2, to more advanced skills in year 3, this range covers essential training elements required for training paramedics.

CLEAN BLEED MAT



34

ABDOMINAL EXAMINATION



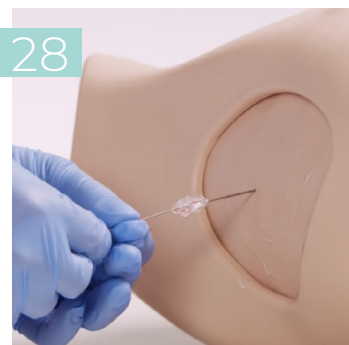
12

VENEPUNCTURE ARM RANGE



44

CHEST TRAUMA MANAGEMENT



28

INJECTIONS



47

TRUWOUND



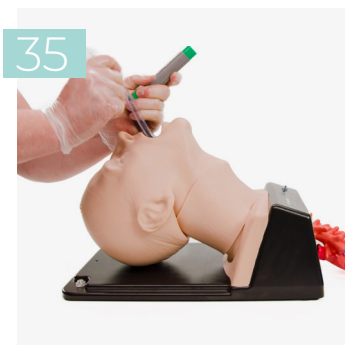
33

TRUTOURNQUET



33

AIRWAY MANAGEMENT



35

ARTERIAL PUNCTURE WRIST



42

OBSTETRICS & MIDWIFERY



56

TRAUMA MANAGEMENT



30

COLLES' FRACTURE



79

OSCE TRAINING

It's important students feel confident taking the Objective Structured Clinical Examination. These products are designed to train and test clinical skill performance for the OSCE.

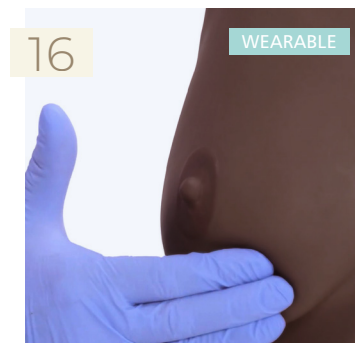
MALE RECTAL EXAMINATION



ABDOMINAL EXAMINATION



BREAST EXAMINATION



PELVIC EXAMINATION



CATHETERISATION



ARTERIAL PUNCTURE WRIST



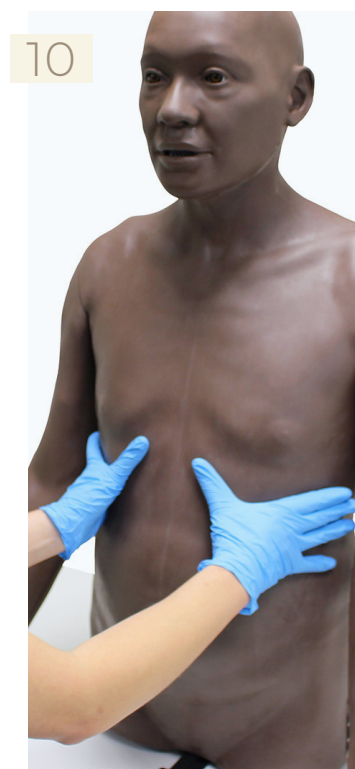
TUBE FEEDING



PATIENT CARE



CaRE



OPHTHALMOLOGY



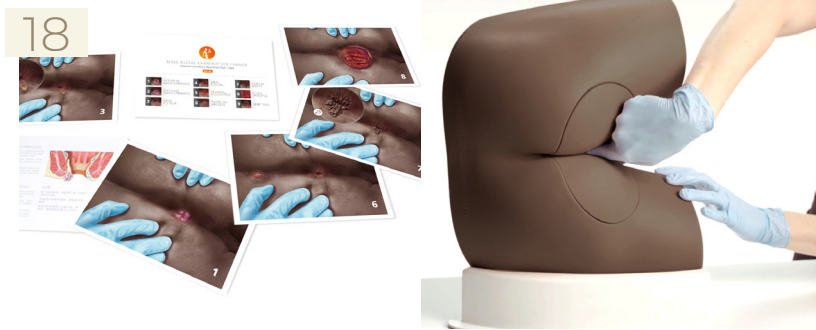
LUMBAR PUNCTURE & EPIDURAL



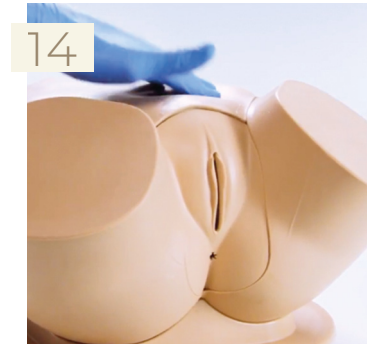
PHYSICIAN ASSOCIATE

Spanning both paramedic and emergency medicine, our range of simulators includes both physical examination and procedural trainers.

MALE RECTAL EXAMINATION



FEMALE PELVIC EXAMINATION



ABDOMINAL EXAMINATION



MALE PELVIC EXAMINATION



BREAST EXAMINATION



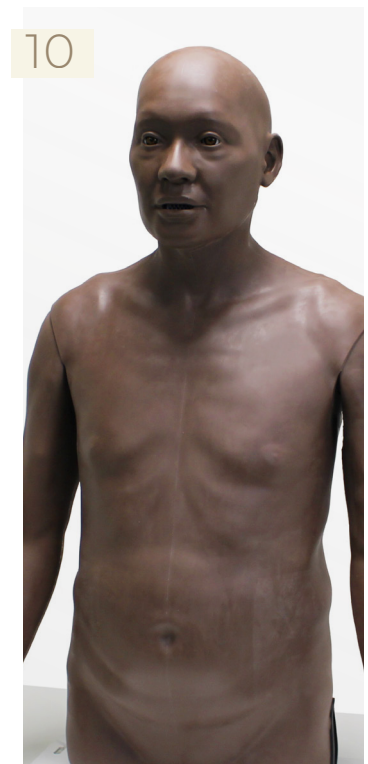
VENEPUNCTURE



CATHETERISATION



CaRE



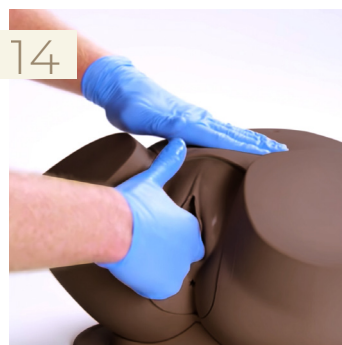
ADVANCED PRACTICE

Upskilling and increasing scopes of work make this range an ideal training tool to ensure both competence and confidence.

ABDOMINAL EXAMINATION



FEMALE PELVIC EXAMINATION



BREAST EXAMINATION



MALE RECTAL EXAMINATION



MALE PELVIC EXAMINATION



OTOLOGY



CaRE



OPHTHALMOLOGY



CLINICAL ULTRASOUND

For training in ultrasound guided procedures, the range is made of materials similar to human tissue, allowing trainees to practise advanced visualising or injecting techniques while using ultrasound imaging for accuracy.

SUPRAPUBIC CATHETERISATION



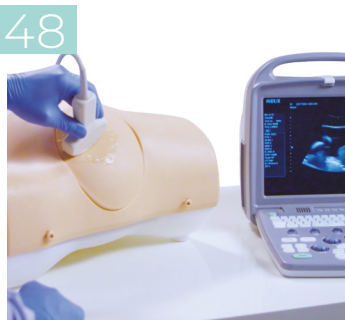
ULTRASOUND EPIDURAL



ARTERIAL PUNCTURE WRIST



PARACENTESIS TRAINER



CHEST TRAUMA MANAGEMENT



TRUCVC



SHOULDER - ULTRASOUND GUIDED



KNEE - ULTRASOUND CAPABILITY



ULTRASOUND GUIDED PICC



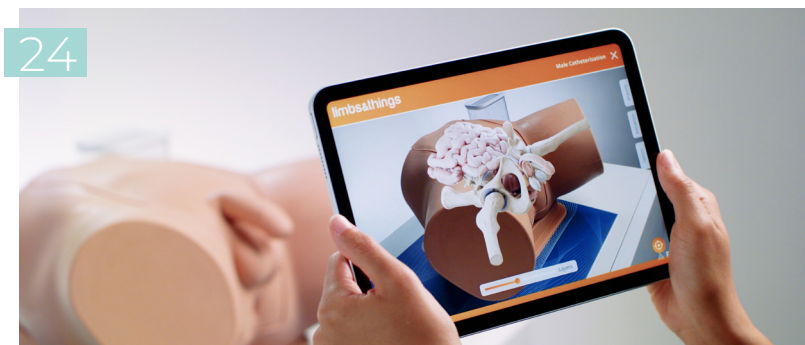
ULTRASOUND PERICARDIOCENTESIS



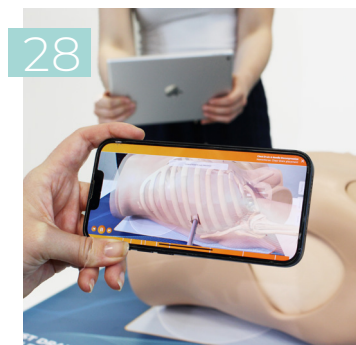
AUGMENTED REALITY (AR)

AR bridges the knowledge gap between theory and practice by allowing users to interact with the trainer's anatomy on their smart device. Discover our compatible models below, or find out how AR enhances learning on Page 8.

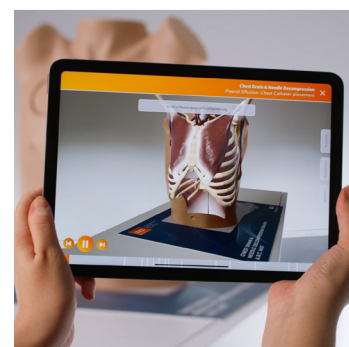
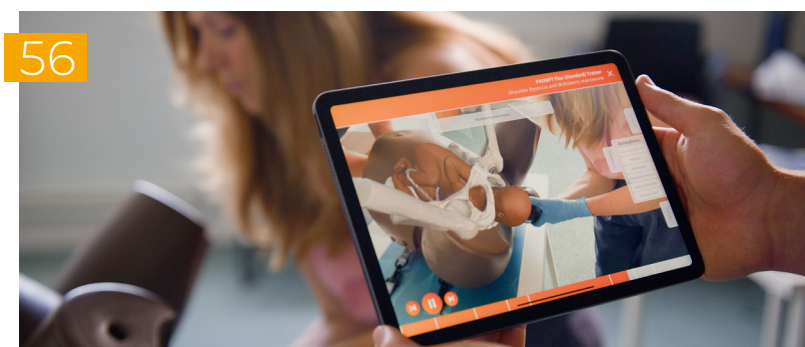
CATHETERISATION TRAINER



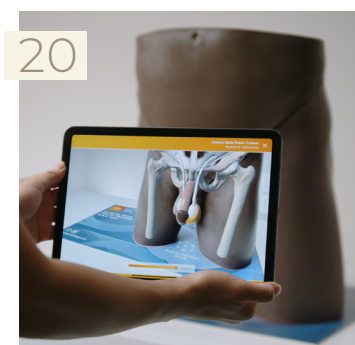
CHEST TRAUMA MANAGEMENT



PROMPT FLEX BIRTHING SIMULATOR



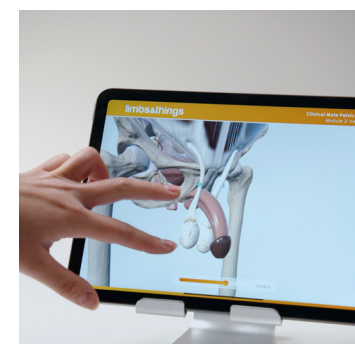
MALE PELVIC TRAINER



LUMBAR PUNCTURE & EPIDURAL



ABDOMINAL EXAMINATION TRAINER



A	ABDOMINAL EXAMINATION TRAINER	12
	ACF PAD - VENEPUNCTURE	46
	ADVANCED CATHETERISATION TRAINER SET	25
	ADVANCED EPIDURAL & LUMBAR PUNCTURE MODEL	26
	ADVANCED VENEPUNCTURE ARM	44
	AIRWAY MANAGEMENT	
	AIRSIM ADVANCE X	35
	AIRSIM BABY X	39
	AIRSIM COMBO X	35
	AIRSIM CHILD COMBO X	39
	AIRSIM DIFFICULT AIRWAY	38
	SMART AIRWAY	36
	SMART AIRWAY CHILD	37
	TRUBABY X	70
	ANAL SPHINCTER REPAIR TRAINER	67
	ANNIE ARTERIAL INSUFFICIENCY LEG MODEL	81
	ARTERIAL PUNCTURE WRIST	42
	ASSISTED VAGINAL BIRTH MODULE (AVB) - PROMPT FLEX	61
	AUGMENTED REALITY	8

B	BASIC SURGICAL SKILLS	
	BSS DAY 1 KIT	51
	BSS DAY 2 KIT	51
	BSS LESION & CYST	51
	DOUBLE LAYER BOWEL	51
	KNOT TYING TRAINER	51
	SUTURE TUTOR PLUS™	52
	BIRTHING SIMULATOR - PROMPT FLEX - STANDARD	58
	BIRTHING SIMULATOR - PROMPT FLEX - ADVANCED	58
	BREAST	
	BREAST EXAMINATION TRAINER - ADVANCED	16
	BREAST EXAMINATION TRAINER - STANDARD	16
	ULTRASOUND GUIDED BREAST BIOPSY PHANTOM	17

C	CARDIOLOGY	
	CARDIOVASCULAR & RESPIRATORY EXAMINATION	10
	CATHETERISATION	
	ADVANCED TRAINER SET	25
	FEMALE CATHETERISATION TRAINER	24
	MALE CATHETERISATION TRAINER	24
	STANDARD CATHETERISATION TRAINER SET	25
	SUPRAPUBIC CATHETERISATION INSERTION UNIT	24

C	CENTRAL LINE MANAGEMENT	
	TRUCVC	40
	ULTRASOUND CVC INSERTION SIMULATOR MK 3	40
	ULTRASOUND GUIDED PICC TRAINING SIMULATOR	41
	CHEST TRAUMA MANAGEMENT	
	CHEST DRAIN & NEEDLE DECOMPRESSION TRAINER	28
	SMART TRUMAN TRAUMA ADULT	30
	TRUMAN TRAUMA ADULT	30
	ULTRASOUND GUIDED PERICARDIOCENTESIS	31
	ULTRASOUND GUIDED THORACENTESIS SIMULATOR	31
	CERVICAL DILATATION & EFFACEMENT MODULE (CD&E)	60
	CLEAN BLEED™ MAT	34
	CLINICAL FEMALE PELVIC TRAINER (CFPT) - ADVANCED	15
	CLINICAL FEMALE PELVIC TRAINER (CFPT) - STANDARD	14
	CLINICAL MALE PELVIC TRAINER (CMPT) - ADVANCED	21
	CLINICAL MALE PELVIC TRAINER (CMPT) - STANDARD	20
	COLLES' FRACTURE REDUCTION TRAINER	79
	CURETTAGE, SNIP & SHAVE EXCISION PAD	55
	CUTDOWN PAD	47

D	DIGITAL EYE EXAMINATION TRAINER	22
	DOUBLE LAYER BOWEL	51

E	EAR EXAMINATION SIMULATOR II	23
	ELBOW FOR JOINT INJECTION	78
	ENHANCED CAESAREAN SECTION MODULE (ECSM)	62
	EOSIM™	82
	EPIDURAL & LUMBAR PUNCTURE MODEL (ADVANCED)	26
	EPISIOTOMY TRAINER	67
	EXTENDED ACF PAD - VENEPUNCTURE	46
	EYE EXAMINATION TRAINER	22

F	FEMALE CATHETERISATION TRAINER	24
	FEMALE EXAMINATION	
	BREAST EXAMINATION TRAINER - ADVANCED	16
	BREAST EXAMINATION TRAINER - STANDARD	16
	CLINICAL FEMALE PELVIC TRAINER (CFPT) - ADV	15
	CLINICAL FEMALE PELVIC TRAINER (CFPT) - STD	14
	ULTRASOUND GUIDED BREAST BIOPSY PHANTOM	17
	FLS ALL-IN-ONE TRAINER SYSTEM	84
	FLS TRAINER BOX WITH TV CAMERA	84
	FLS TRAINER SYSTEM	84
	FOOT & ANKLE FOR JOINT INJECTION	78
	FREDDIE FISTULA™ SKILLS TRAINER	80

G	GYNAECOLOGY	
	SURGICAL FEMALE PELVIC TRAINER (SFPT)	65
H	HAND & WRIST INJECTION TRAINER	77
I	INFANT HIP EXAM	69
	INFANT HIP SONOGRAPHY TRAINING PHANTOM	73
	INGROWING TOENAIL TRAINER	53
	INJECTION TRAINER	47
J	JOINT INJECTION	
	ELBOW FOR JOINT INJECTION	78
	FOOT & ANKLE FOR JOINT INJECTION	78
	HAND & WRIST INJECTION TRAINER	77
	KNEE ASPIRATION & INJECTION TRAINER WITH ULTRASOUND CAPABILITY	76
	SHOULDER INJECTION TRAINER - PALPATION GUIDED	74
	SHOULDER INJECTION TRAINER - ULTRASOUND GUIDED	75
K	KNEE ASPIRATION & INJECTION TRAINER	76
	KNOT TYING TRAINER	51
L	LAPAROSCOPIC SURGERY	
	EOSIM™	82
	FLS ALL-IN-ONE TRAINER SYSTEM	84
	FLS TRAINER BOX WITH TV CAMERA	84
	FLS TRAINER SYSTEM	84
	SURGICAL FEMALE PELVIC TRAINER (SFPT)	65
	SURGRAC™	83
	LIPOMA PAD	54
	LUMBAR PUNCTURE & EPIDURAL	
	ADVANCED EPIDURAL & LUMBAR PUNCTURE MODEL	26
	LUMBAR PUNCTURE MODEL	26
	ULTRASOUND EPIDURAL & LUMBAR PUNCTURE MODEL	26
M	MALE CATHETERISATION TRAINER	24
	MALE EXAMINATION	
	CLINICAL MALE PELVIC TRAINER (CMPT) - ADV	21
	CLINICAL MALE PELVIC TRAINER (CMPT) - STD	20
	MALE RECTAL EXAMINATION TRAINER - ADVANCED	18
	MALE RECTAL EXAMINATION TRAINER - STANDARD	18
	MEDICAL FOOTCARE MODEL	81
	MEDIOLATERAL PERINEAL REPAIR TRAINER	66
	MIDLINE PERINEAL REPAIR TRAINER	66

	MINOR SURGERY	
	CURETTAGE, SNIP & SHAVE EXCISION PAD	55
	INGROWING TOENAIL TRAINER	53
	LIPOMA PAD	54
	PROFESSIONAL SKIN PAD MK 3	54
	SEBACEOUS CYST PAD	55
	WOUND CLOSURE PAD	53
N	NCPR SIMULATOR PLUS II	72
O	OBSTETRICS & MIDWIFERY	
	ANAL SPHINCTER REPAIR TRAINER	67
	ASSISTED VAGINAL BIRTH MODULE (AVB)	61
	BIRTHING SIMULATOR - PROMPT FLEX - ADVANCED	58
	BIRTHING SIMULATOR - PROMPT FLEX - STANDARD	58
	CERVICAL DILATATION & EFFACEMENT MODULE (CD&E)	60
	ENHANCED CAESAREAN SECTION MODULE (ECSM)	62
	EPISIOTOMY TRAINER	67
	MEDIOLATERAL PERINEAL REPAIR TRAINER	66
	MIDLINE PERINEAL REPAIR TRAINER	66
	POSTPARTUM HAEMORRHAGE MODULE	63
	POSTPARTUM HAEMORRHAGE KIT - PROMPT FLEX	63
	OPHTHALMOLOGY	
	DIGITAL EYE EXAMINATION TRAINER	22
	EYE EXAMINATION SIMULATOR	22
	OTOLOGY	
	EAR EXAMINATION SIMULATOR II	23
P	PAEDIATRICS	
	AIRSIM CHILD COMBO X	39
	INFANT HIP EXAM	69
	INFANT HIP SONOGRAPHY TRAINING PHANTOM	73
	NCPR SIMULATOR PLUS II	72
	PAEDIATRIC FAST	73
	PAEDIATRIC LUMBAR PUNCTURE SIMULATOR II	71
	PAEDIATRIC PHYSICAL EXAMINATION SIMULATOR	72
	SMART AIRWAY CHILD	37
	TRUBABY X	70
	TRUBABY X LITE	71
	PARACENTESIS TRAINER	48
	PAT PRESSURE ULCER STAGING MODEL	81

P	PATIENT CARE	
	PATIENT CARE SIMULATOR "CHERRY"	50
	PATIENT CARE SIMULATOR "YAYE"	49
	TUBE FEEDING SIMULATOR	47
	PELVIC TRAINERS	
	CLINICAL FEMALE PELVIC TRAINERS (CFPT)	14
	CLINICAL MALE PELVIC TRAINERS (CMPT)	20
	PERINEAL REPAIR & EPISIOTOMY	
	ANAL SPHINCTER REPAIR TRAINER	67
	EPISIOTOMY TRAINER	67
	PIERRE ROBIN X	39
	POSTPARTUM HAEMORRHAGE MODULE - PROMPT FLEX	63
	POSTPARTUM HAEMORRHAGE KIT - PROMPT FLEX	63
	PRESSURE SORES SIMULATOR	80
	PROMPT FLEX BIRTHING SIMULATOR RANGE	56
	PROFESSIONAL SKIN PAD MK3	54

R	(MALE) RECTAL EXAMINATION TRAINER	18
---	-----------------------------------	----

S	SEBACEOUS CYST PAD	55
	SEYMOUR II WOUND CARE MODEL™	80
	SHOULDER INJECTION TRAINER - PALPATION GUIDED	74
	SHOULDER INJECTION TRAINER - ULTRASOUND GUIDED	75
	SMART AIRWAY	36
	SMART TRUMAN TRAUMA ADULT	30
	STAN STAGE IV PRESSURE INJURY MODEL™	81
	STANDARD CATHETERISATION TRAINER SET	25
	STANDARD VENEPUNCTURE ARM	44
	SUPRAPUBIC CATHETERISATION INSERTION UNIT	24
	SURGICAL FEMALE PELVIC TRAINER (SFPT)	65
	SURGRAC™	83
	SUTURE TUTOR PLUS™ - HANDS-ON KIT	52

T	THREE VEIN PAD - VENEPUNCTURE	47
	TRUCVC	40
	TRUBABY X	70
	TRUBABY X LITE	71
	TRUIV BLOCK	41
	TRUJUNCTIONAL	32
	TRUMAN TRAUMA ADULT	30

T	TRUTOURNQUET	33
	TRUWOUND	33
	TUBE FEEDING SIMULATOR	47

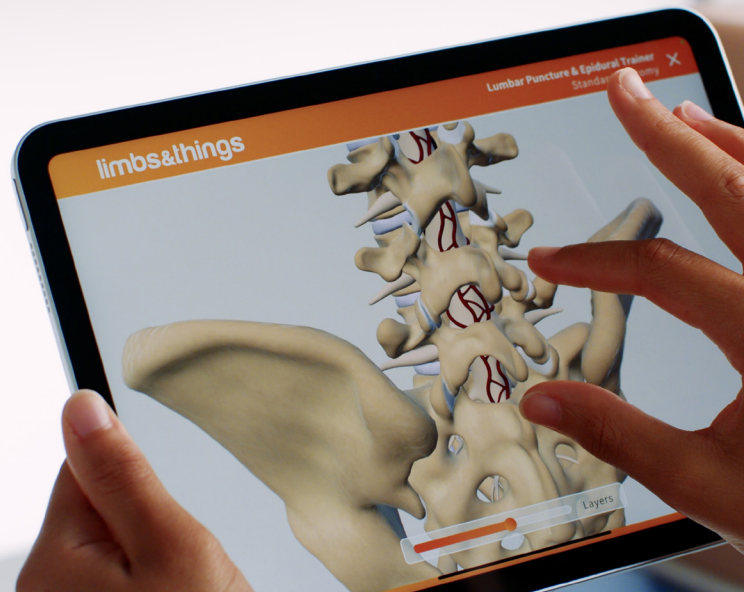
U	ULTRASOUND	
	ARTERIAL PUNCTURE WRIST	42
	CHEST DRAIN & NEEDLE DECOMPRESSION TRAINER	28
	KNEE ASPIRATION & INJECTION TRAINER	76
	PARACENTESIS TRAINER	48
	SHOULDER INJECTION TRAINER - ULTRASOUND GUIDED	75
	SUPRAPUBIC CATHETERISATION INSERTION UNIT	24
	TRUIV BLOCK	41
	ULTRASOUND CVC INSERTION SIMULATOR MK 3	40
	ULTRASOUND EPIDURAL & LUMBAR PUNCTURE MODEL	26
	ULTRASOUND GUIDED BREAST BIOPSY PHANTOM	17
	ULTRASOUND GUIDED PERICARDIOCENTESIS	31
	ULTRASOUND GUIDED PICC TRAINING SIMULATOR	41
	ULTRASOUND GUIDED THORACENTESIS SIMULATOR	31

V	VENEPUNCTURE	
	ACF PAD - VENEPUNCTURE	46
	ADVANCED VENEPUNCTURE ARM	44
	CUTDOWN PAD	47
	EXTENDED ACF PAD - VENEPUNCTURE	46
	STANDARD VENEPUNCTURE ARM	44
	THREE VEIN PAD - VENEPUNCTURE	47
	VINNIE VENOUS INSUFFICIENCY LEG MODEL	81

W	WOUND CARE	
	ANNIE ARTERIAL INSUFFICIENCY LEG MODEL	81
	FREDDIE FISTULA™ SKILLS TRAINER	80
	MEDICAL FOOTCARE MODEL	81
	PRESSURE SORES SIMULATOR	80
	SEYMOUR II WOUND CARE MODEL™	80
	STAN STAGE IV PRESSURE INJURY MODEL™	81
	PAT PRESSURE ULCER STAGING MODEL	81
	VINNIE VENOUS INSUFFICIENCY LEG MODEL	81
	WILMA WOUND FOOT™	80
	WOUND CLOSURE PAD	53

Download our Augmented Reality app to start exploring now

Whether you have an AR compatible model or not, you can download the app for free and start discovering the interactive anatomy straight away.



Visit page 8 for more information on Augmented Reality

1

Visit
limbsandthings.com/augmentedreality



Click to download the app

2

Select one of the app stores
depending on the operating system
of your device



3

Open the app,
head to products and download
the model you're interested in

Download

4

To use without a model,
select **Interactive Anatomy**,
and start exploring

Interactive Anatomy

i

Watch our video guide on our website for easy instructions
limbsandthings.com/how-to-use-ar



GENERAL INFORMATION



Contacting us

- Our Customer Services team will be pleased to assist you with your enquiry or order **T: +61 (3) 9794 9334**
E: admin@limbsandthings.com
- Please see full contact details on the back of this catalogue
- Please quote product numbers & descriptions wherever possible



Ordering

- All orders should be confirmed in writing (by email or post)
- All orders will be acknowledged in 48 hours
- All orders are subject to shipping charges
- GST, where applicable, is charged at the prevailing AUS rate
- Our Terms of Payment & Conditions of Sale can be viewed on limbsandthings.com or requested from Customer Services



Product changes

As we have a policy of continual product improvement, the specification of products may occasionally vary from those shown in the catalogue.



Warranty

The Limbs & Things products featured in this catalogue are produced with the utmost care and are covered by our Guarantee. This applies to all models that have been used according to the user guide supplied and covers functionality and durability. Please see full details on

<https://limbsandthings.com/au/terms-conditions>

Patents granted

2277826: UK • 5775916: USA • 0990227: Europe, UK, Germany, Spain, France, Italy, Netherlands • 81174/98: Australia • 1023832: Hong Kong • US6336812: USA • 98806331.x: China • 5-512288: Japan • 2 293 585: Canada

Patents applied for:

11-503978: Japan • 0215051.4: UK

© 2025 Limbs & Things Limited. All rights reserved. No part of this publication may be reproduced, stored, transmitted or disseminated, in any form, or by any means, without prior written permission from Limbs & Things.

All information correct at time of going to press.



limbs&
things

Australia & New Zealand

00 61 3 9708 6511

aus.sales@limbsandthings.com

UK (Head Office)

00 44 (0)117 311 0500

gbsales@limbsandthings.com

USA & Canada

00 1-912-629-0357

customerservice@limbsandthings.com

Sweden

00 72 730 79 00

order.waldemarlarsson@gmail.com

Distributed Regions

A global network of distributors supply our products to over 70 countries

limbsandthings.com



FM 818255