



USER GUIDE

ECOSystem with PROMPT Flex

80197	80297	SMALL
80198	80298	MEDIUM
80199	80299	LARGE

FOR MORE SKILLS TRAINING PRODUCTS VISIT

limbsandthings.com

Sussex Street, St Philips, Bristol, BS2 0RA, UK | sales@limbsandthings.com | +44 (0) 117 311 0500

INDEX

PACKAGE SUPPLIED	3
SAFETY & CLEANING INSTRUCTIONS	4
SET UP	5
• REMOVING THE ABDOMINAL SKIN	5
• REMOVING THE CERVIX	6
• SETTING UP DIFFERENT STATIONS	7
TRAINING	8
• SHOULDER DYSTOCIA	8
• POSTPARTUM HEMORRAGE	9
• EXTENDED BREECH BIRTH	10
• UMBILICAL CORD PROLAPSE	11
CLEANING & STORAGE	11

TAKE A LOOK
AT OUR **VIDEOS**



VISIT THE WEBSITE
limbsandthings.com

OR YOUTUBE CHANNEL
youtube.com/limbsandthings

PACKAGE
SUPPLIED

		SMALL ECOSystem	MEDIUM ECOSystem	LARGE ECOSystem
		80197	80198	80199
		80297	80298	80299
<i>What's included?</i>		1-5 learners 1 station at a time	5-10 learners 2 stations at a time	+10 learners 4 stations at a time
	80100/80200 Birthing Simulator PROMPT Flex - Standard	x	✓	✓(x2)
	80106/80206 Birthing Simulator PROMPT Flex - Advanced	✓	✓	✓
	80112/80212 Postpartum Hemorrhage Kit - PROMPT Flex	✓	✓	✓
	80120/80220 Birthing Simulator PROMPT Flex	x	x	✓
	80124/80224 Abdomen for PROMPT Flex	x	x	✓
	80196 Piper Forceps	✓	✓	✓

* iPad not included. Download app at limbsandthings.com

** Postpartum Hemorrhage Kit includes:

80101/80201 PPH Module PROMPT Flex

80111 Compression Suture Uterus (x2)

80171/80271 Pre-incised Delivery Only Skin



Please check the User Guide of each product to see full list of contents

SAFETY & CLEANING INSTRUCTIONS

READ THE SAFETY INSTRUCTIONS CAREFULLY BEFORE USING YOUR BIRTHING SIMULATOR PROMPT FLEX

DO's



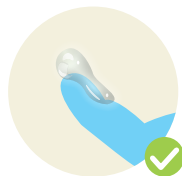
Follow all instructions. Keep these instructions. Heed all warnings.

Only use the lubricant and simulated blood supplied with this product. Use of non-recommended fluid products may weaken or damage the simulator.



Wear gloves at all times and remove all jewellery items. Sharp surfaces such as finger nails and rings can lead to damage of silicone parts.

Always lubricate the cervix, birth canal and baby before each birth. A poorly lubricated baby or placenta may damage the birth canal or the cervix as it is pushed through.



Clean the product with a damp soft cloth or sponge, using only warm water with mild detergent, after every training session. Clean off excess lubricant from all mother and baby surfaces.

STORAGE & TRANSPORTATION



Always ensure that the products are properly packed and secured during transportation and storage in order to prevent personal injury or damage to the product.

DON'Ts



Do not install near any heat sources, do not expose the product to flames or use near naked flame sources. Do not use flammable solvents near or on this product.

Do not use any attachments other than those supplied by the manufacturer.



Do not wear any jewellery items.

Do not disassemble the product or attempt to repair a faulty unit, please return the product to Limbs & Things for assessment and repair.

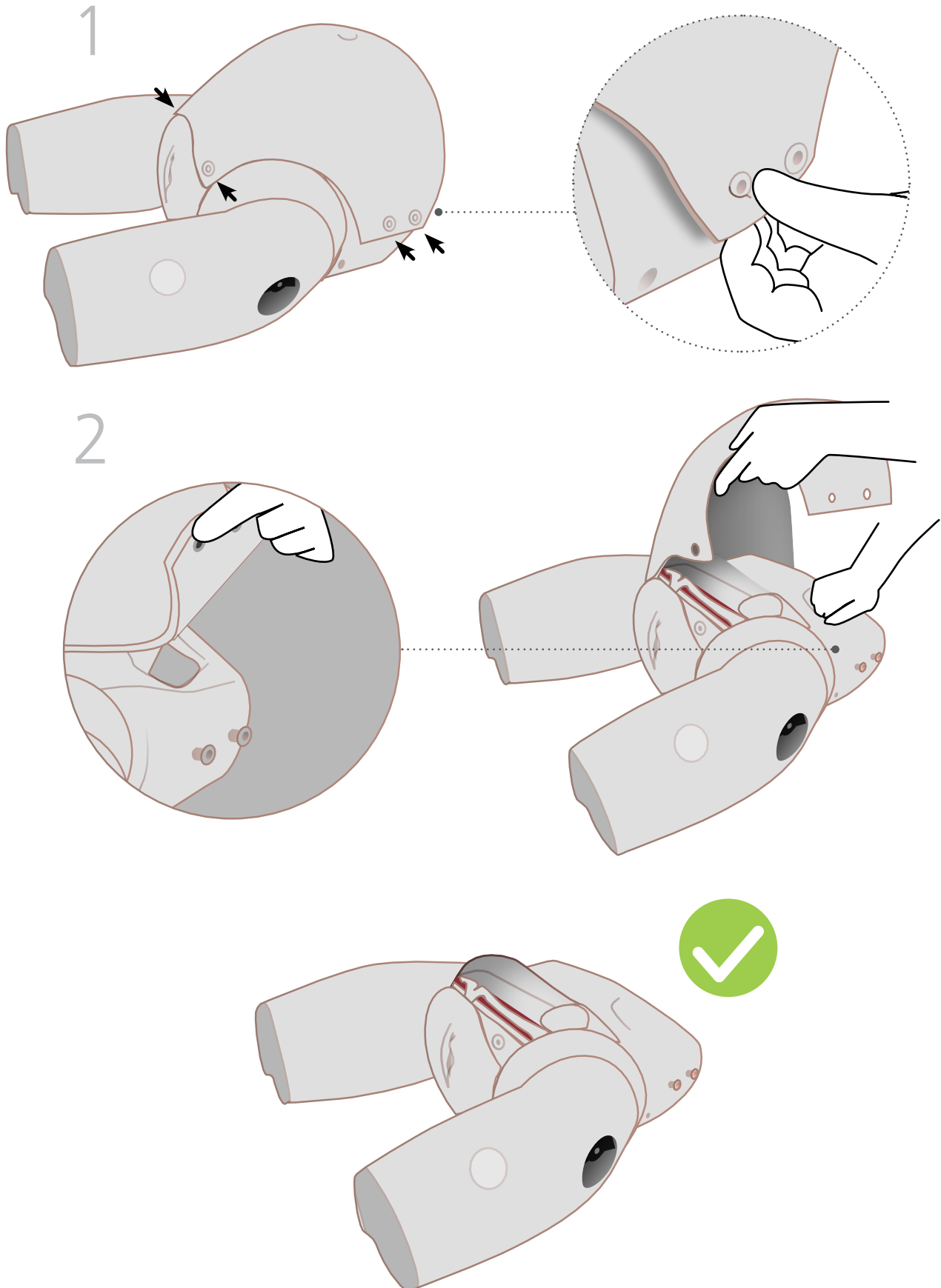


Do not use if the skin is torn.

SET UP

REMOVING THE ABDOMINAL SKIN

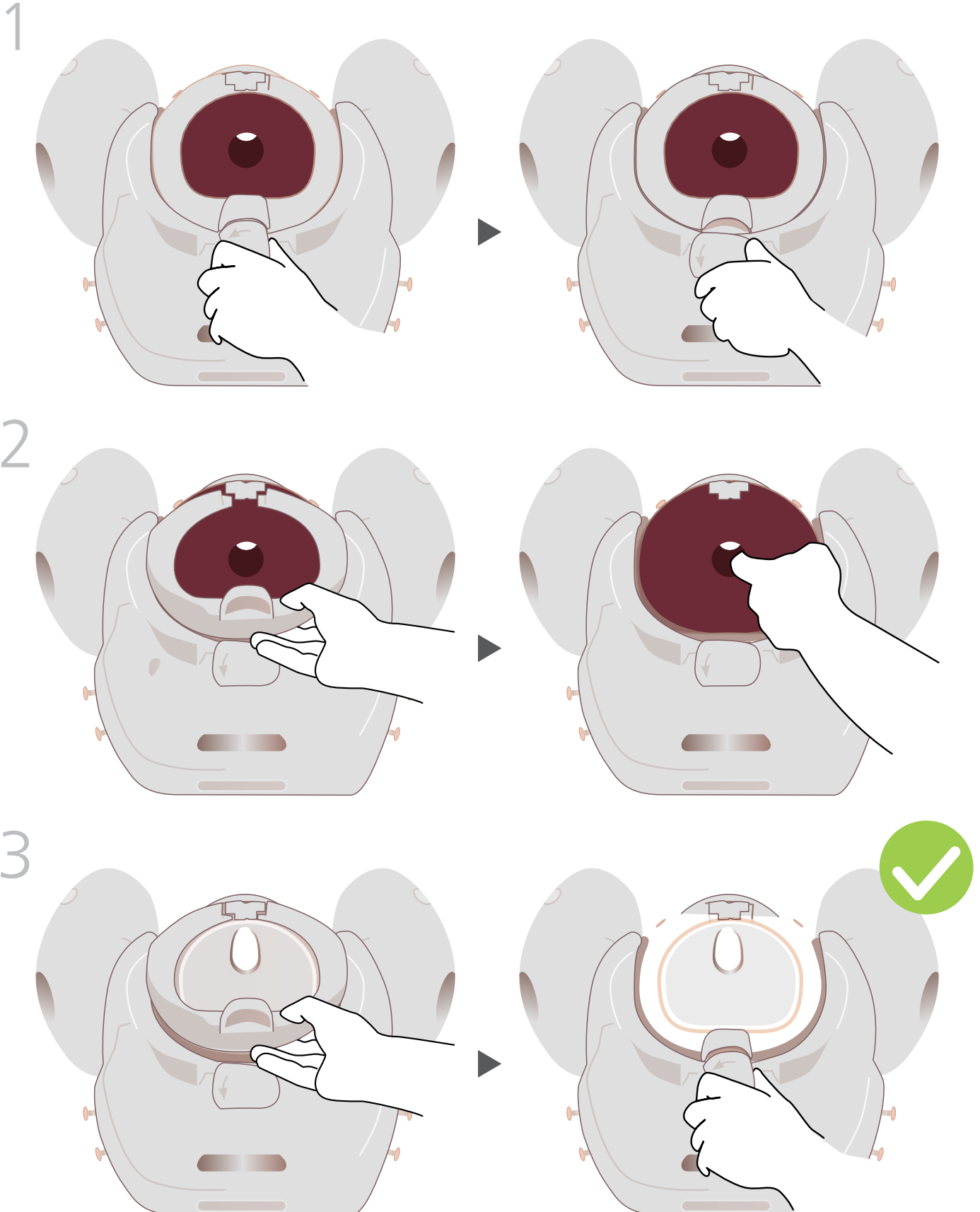
The abdomen can be removed easily to facilitate correct positioning of the baby within the pelvis if necessary.



SET UP

REMOVING THE CERVIX

The Cervix will need to be removed when conducting a SHOULDER DYSTOCIA drill, BREECH PRESENTATION VAGINAL DELIVERY, PPH and UMBILICAL PROLAPSE

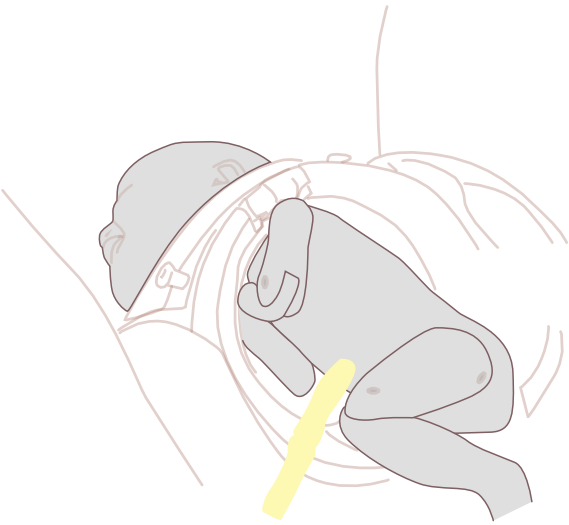


SET UP

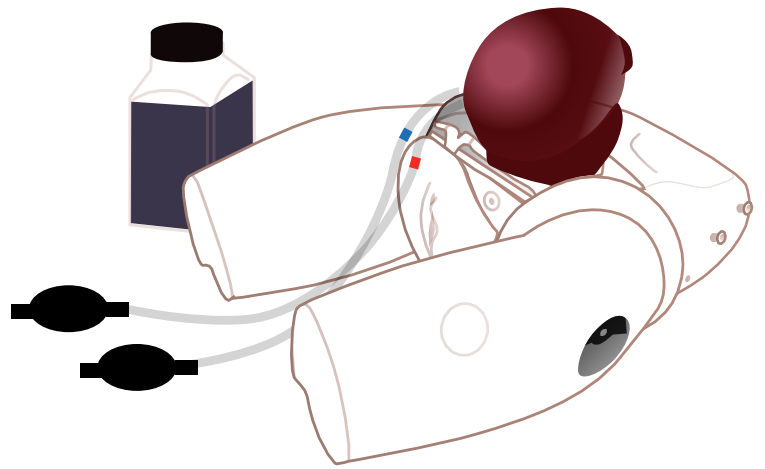
SETTING UP THE DIFFERENT STATIONS

There are 5 teaching stations in total for ECO (with the 5th being communication). The Limbs & Things ECOSystem offers all the equipment needed to run the course.

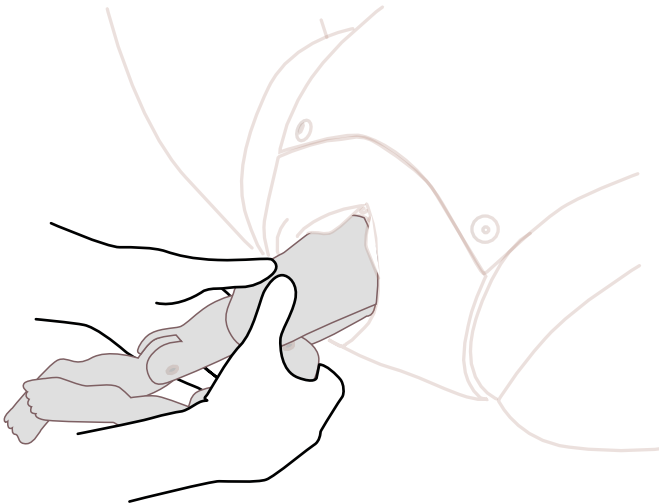
1. SHOULDER DYSTOCIA



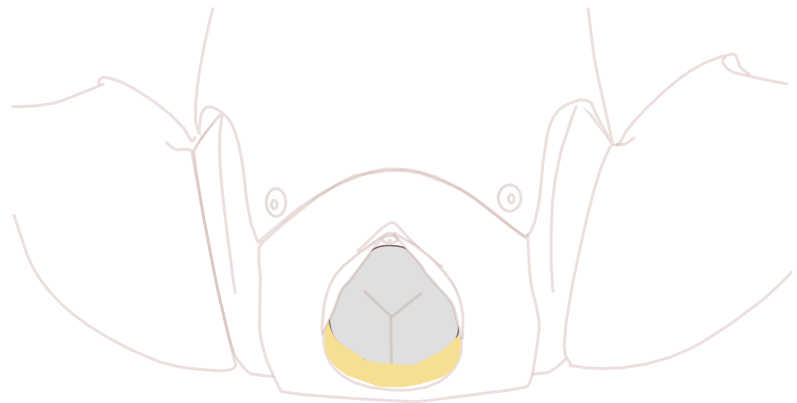
2. POSTPARTUM HEMORRHAGE



3. BREECH PRESENTATION VAGINAL DELIVERY



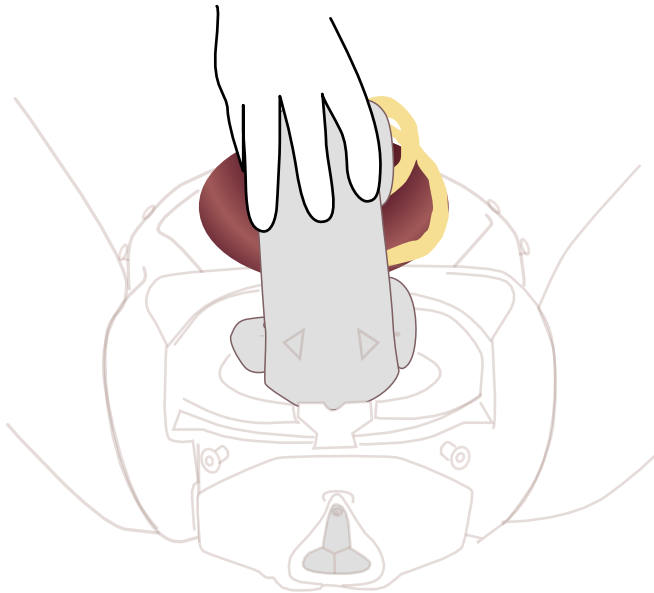
4. UMBILICAL CORD PROLAPSE



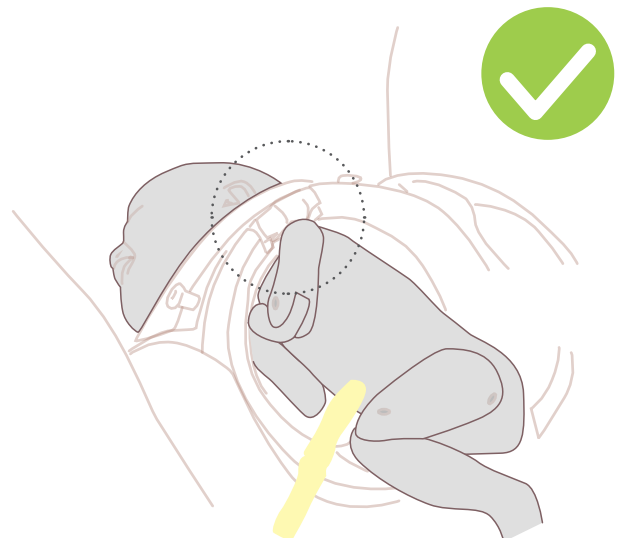
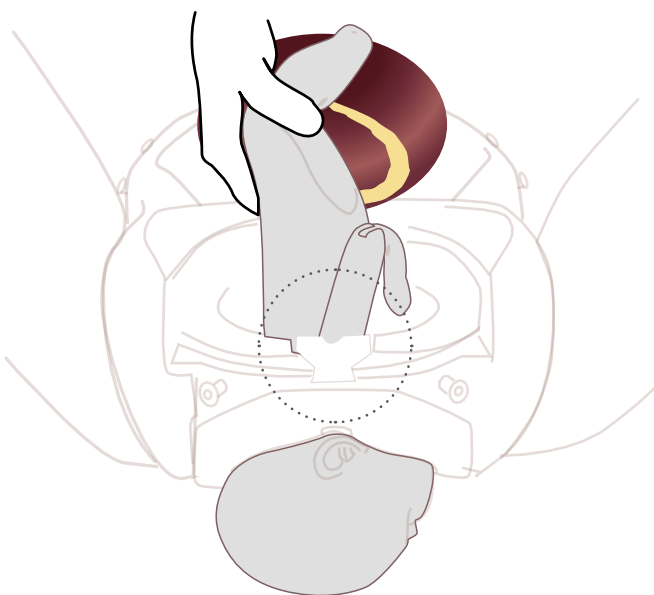
TRAINING

SHOULDER DYSTOCIA

- Wear gloves at all times and remove all jewelry items.
- Always lubricate the birth canal and baby before each birth.

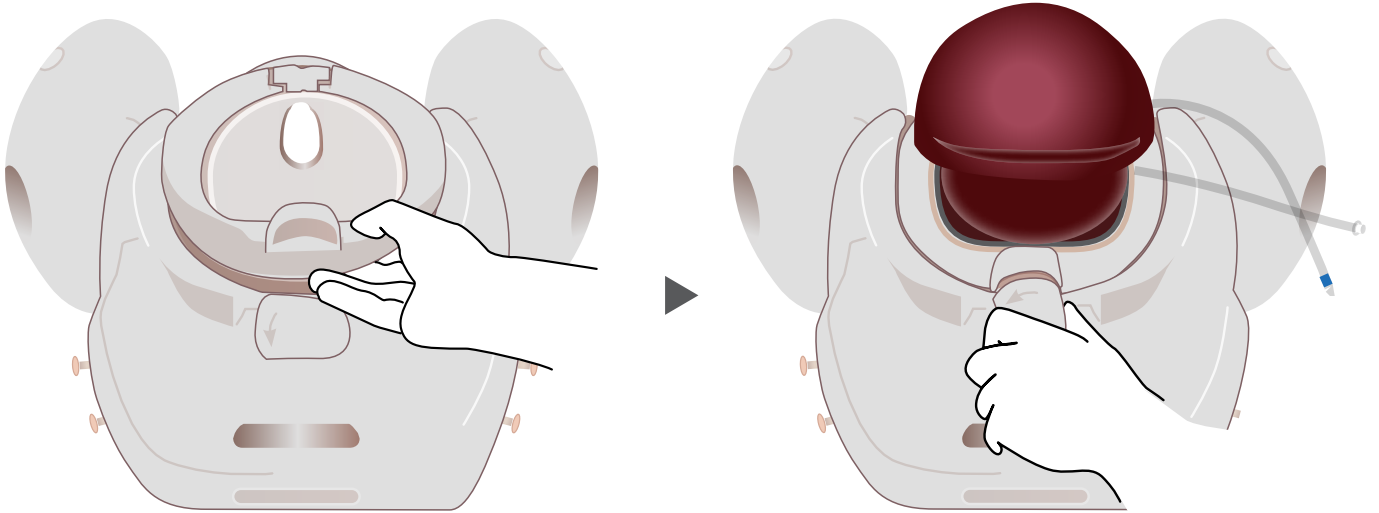


T The trainer needs to ensure that the anterior shoulder of the baby is wedged behind the symphysis pubis. The baby must be held in this position by the trainer when delivery commences

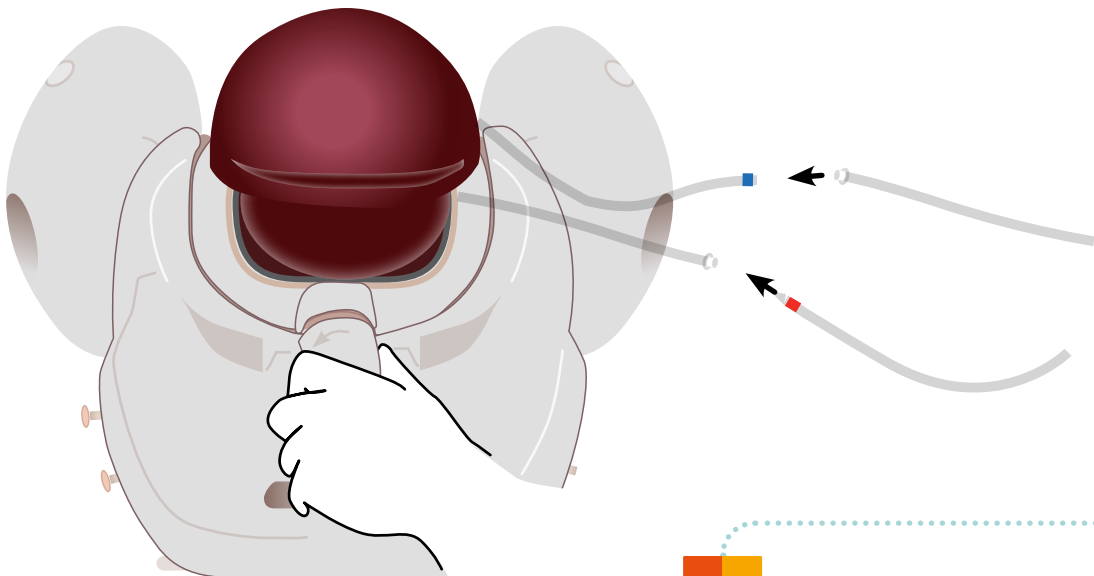


POSTPARTUM HEMORRHAGE

- Remove the cervix and place the PPH Module to the Birthing Mother.



- Attach the connectors



See PPH User Guide for a more detailed information

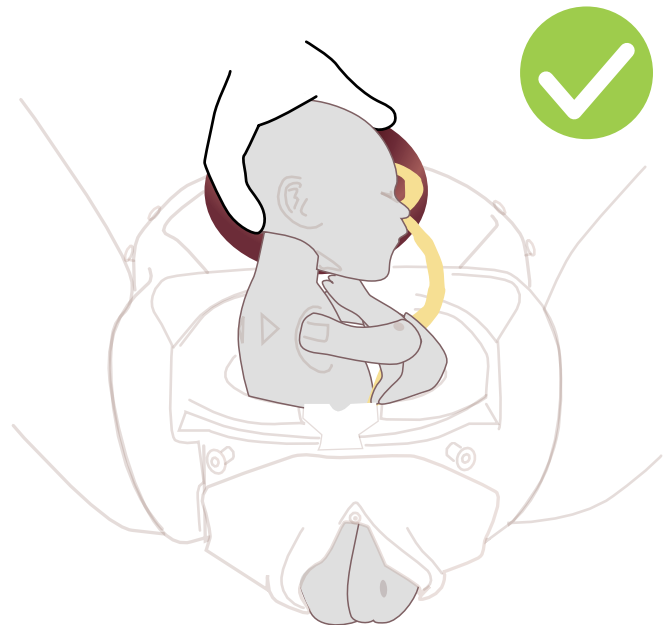
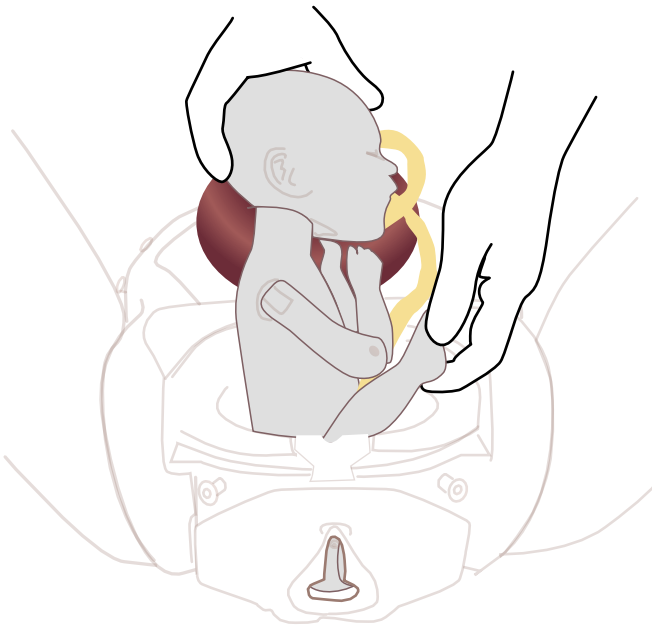
TRAINING

EXTENDED BREECH BIRTH

- Wear gloves at all times and remove all jewelry items.
- Always lubricate the birth canal and baby before each birth.



To conduct a **breech delivery** the trainer needs to push on the head to simulate contractions and maternal effort. Ensure the baby's arms remain flexed during the delivery (unless nuchal arms are required for training)



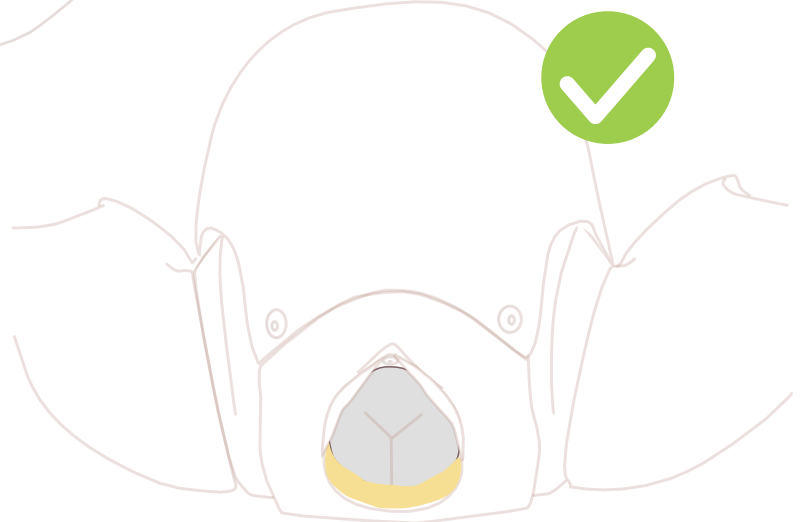
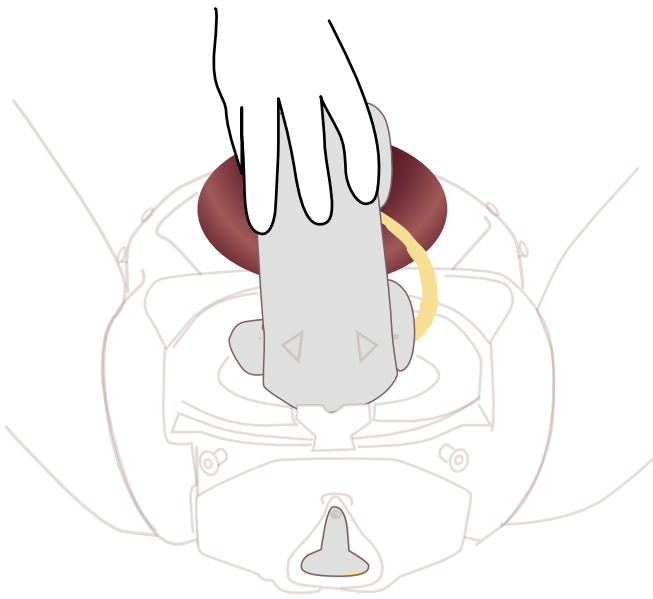
You'll need (included):
PIPER FORCEPS



TRAINING

UMBILICAL CORD PROLAPSE

- Wear gloves at all times and remove all jewelry items.
- Always lubricate the birth canal and baby before each birth.



CLEANING & STORAGE



It is vitally important that after each training session all lubrication is cleaned from all mother and baby surfaces with a warm damp cloth.

You can also use the supplied baby wipes to wipe away any excess lubricant.

Simulation Session Plan:

80197 SMALL ECOSYSTEM



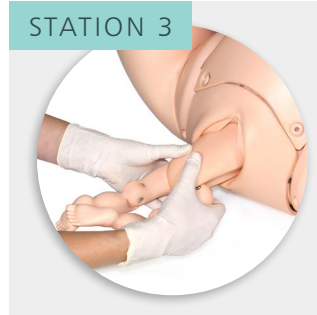
STATION 1



STATION 2



STATION 3



STATION 4



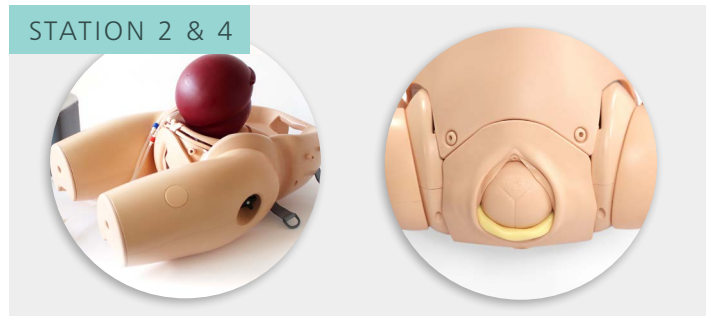
80198 MEDIUM ECOSYSTEM



STATION 1 & 3



STATION 2 & 4



80199 LARGE ECOSYSTEM



4 STATIONS SIMULTANEOUSLY

