



USER GUIDE

PARACENTESIS TRAINER

This product is available
in light and dark skin tones

60100

60111

FOR MORE SKILLS TRAINING PRODUCTS VISIT

limbsandthings.com

Sussex Street, St Philips, Bristol, BS2 0RA, UK | sales@limbsandthings.com | +44 (0) 117 311 0500

INDEX

PACKAGE SUPPLIED	3
SAFETY & CLEANING INSTRUCTIONS	4
SET UP	5
• ADDING/REMOVING INTERNAL ANATOMY	6
• Bowel	6
• Liver	7
• Spleen	7
• FITTING THE PARACENTESIS PADS - USE OF THE PADS	8
• ADDING THE ASCITES FLUID (WATER)	9
• USING THE LARGE VOLUME REFILL SYSTEM	9
TRAINING	10
CLEANING & STORAGE AFTER USE	11

TAKE A LOOK
AT OUR **VIDEO**



VISIT THE WEBSITE
limbsandthings.com

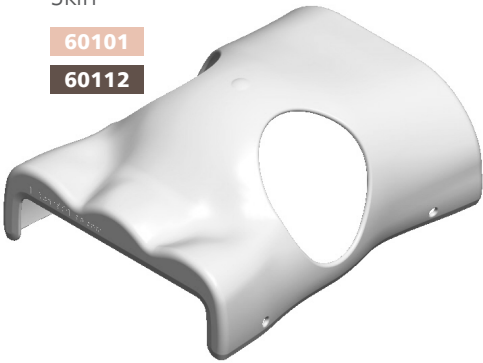
OR YOUTUBE CHANNEL
youtube.com/limbsandthings

PACKAGE
SUPPLIED

Skin

60101

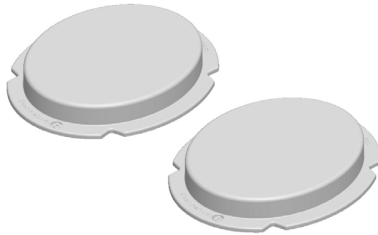
60112



Pads (x2)

60102

60113



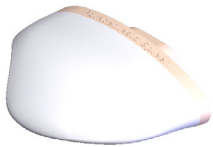
Liver

60103



Spleen

60104



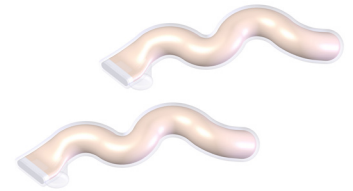
Bowel Insert (x2)

60105



Floating Bowel (x2)

60106



Clamping Frame (x2)

60107

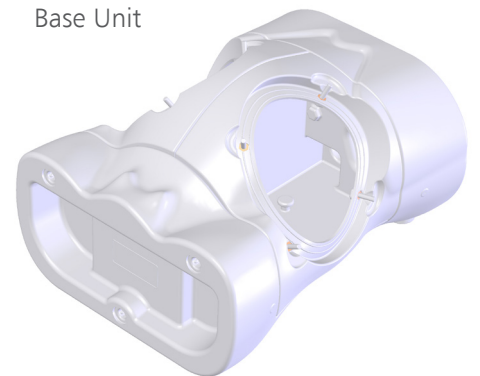


Large
Volume Refill
System

60108



Base Unit



Carry
Case



SAFETY & CLEANING INSTRUCTIONS

READ THE SAFETY INSTRUCTIONS CAREFULLY BEFORE USING YOUR PARACENTESIS TRAINER

DO'S



Follow all instructions. Keep these instructions. Heed all warnings.

Only use attachments/accessories specified by Limbs & Things



If a product is damaged or worn, it should be repaired by Limbs & Things. To arrange this, please contact your point of purchase who will be able to provide a repair quote.

Clean the product with a damp soft cloth or sponge, using only warm water with mild detergent.



DON'Ts



Do not install near any heat sources, do not expose the product to flames or use near naked flame sources. Do not use flammable solvents near or on this product.

Never use the product outdoors as this may damage the product.



Do not disassemble the product or attempt to repair a faulty unit, please return the product to Limbs & Things for assessment and repair.

Do not allow young children to use this product.



STORAGE & TRANSPORTATION



The trainer and its accessories are heavy when packed in the carrying case.



This product is heavy once full of water in both chambers (additional 7 litres in weight).



Always ensure that the products are properly packed and secured during transportation and storage in order to prevent personal injury or damage to the product.

SET UP

YOU WILL NEED
(NOT SUPPLIED)

Jug



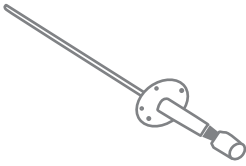
Kidney Dish



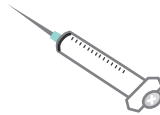
Funnel



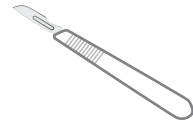
Rocket Catheter



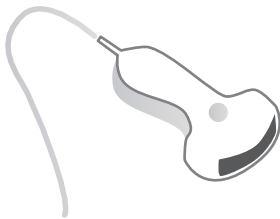
21g Needle



Scalpel



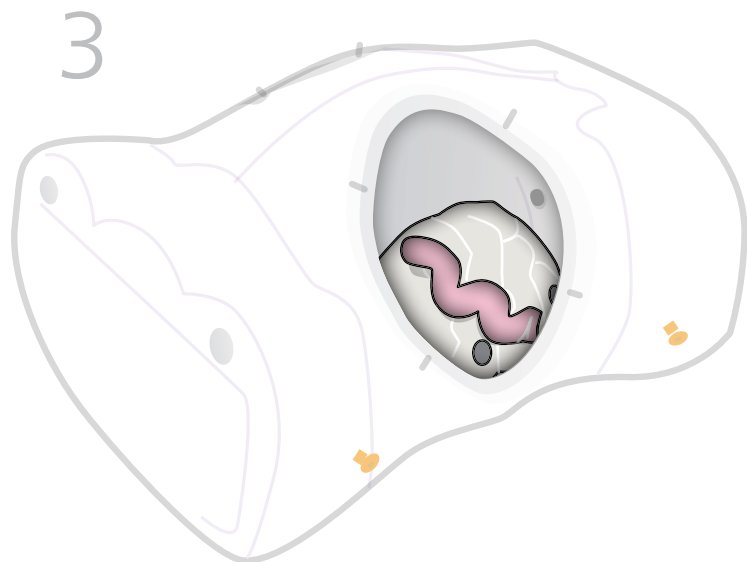
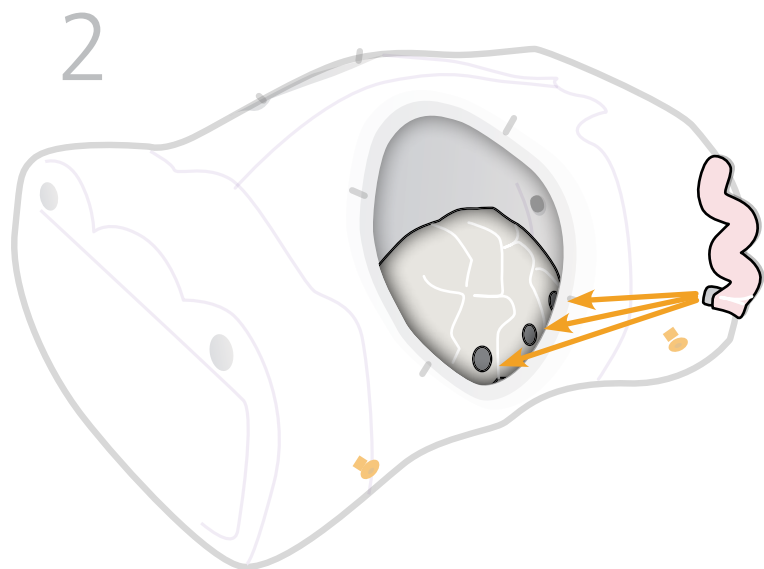
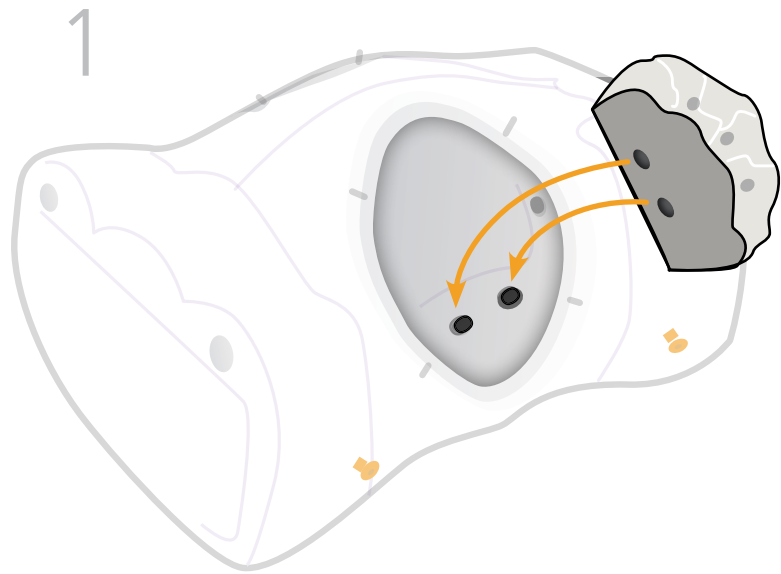
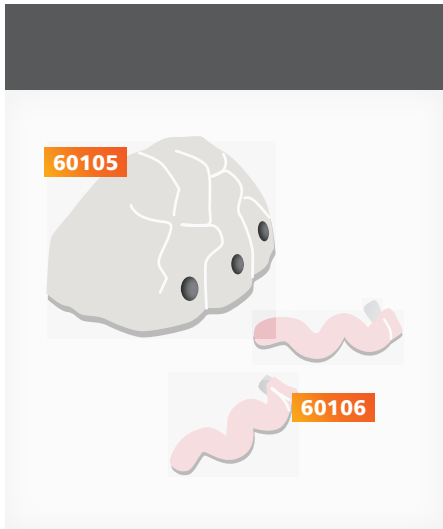
Large Curvilinear Probe
(Optional)



Ultrasound Gel
(Optional)



ADDING/REMOVING INTERNAL ANATOMY

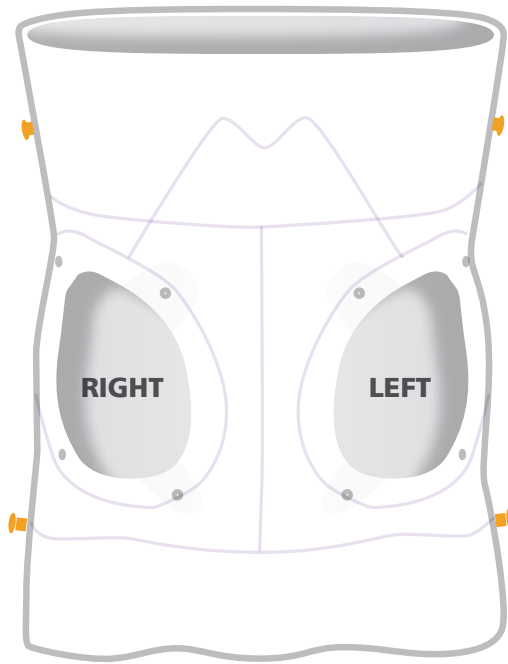


LIVER

60103



Right side



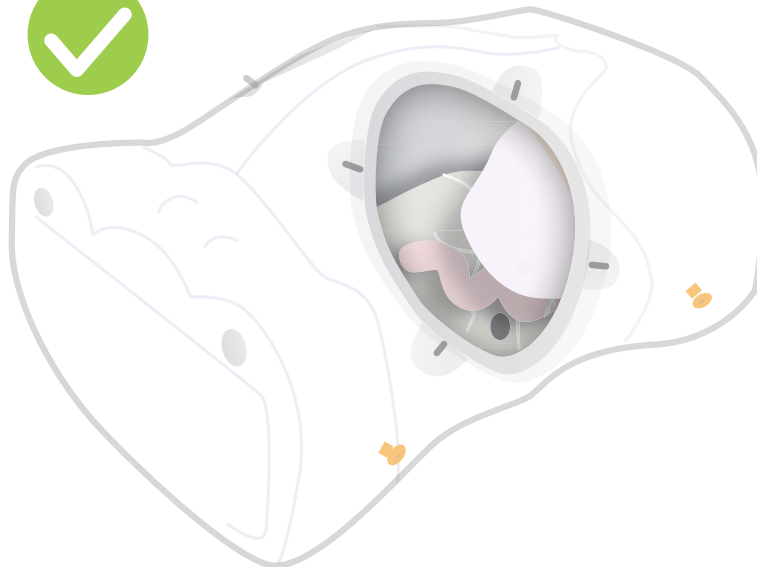
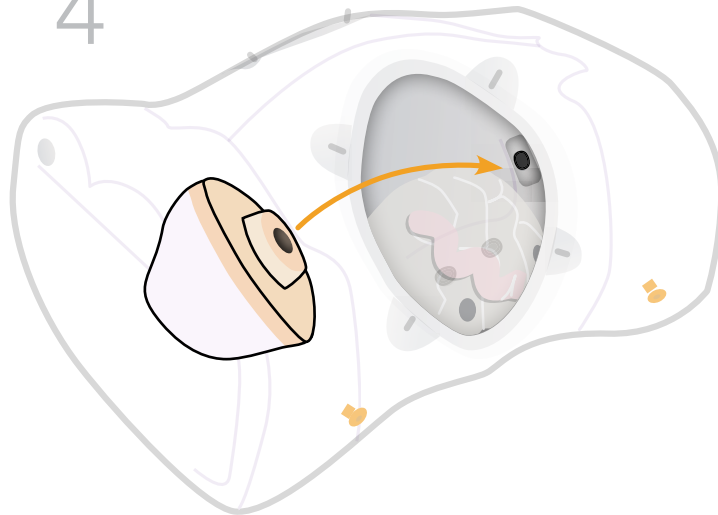
SPLEEN

60104

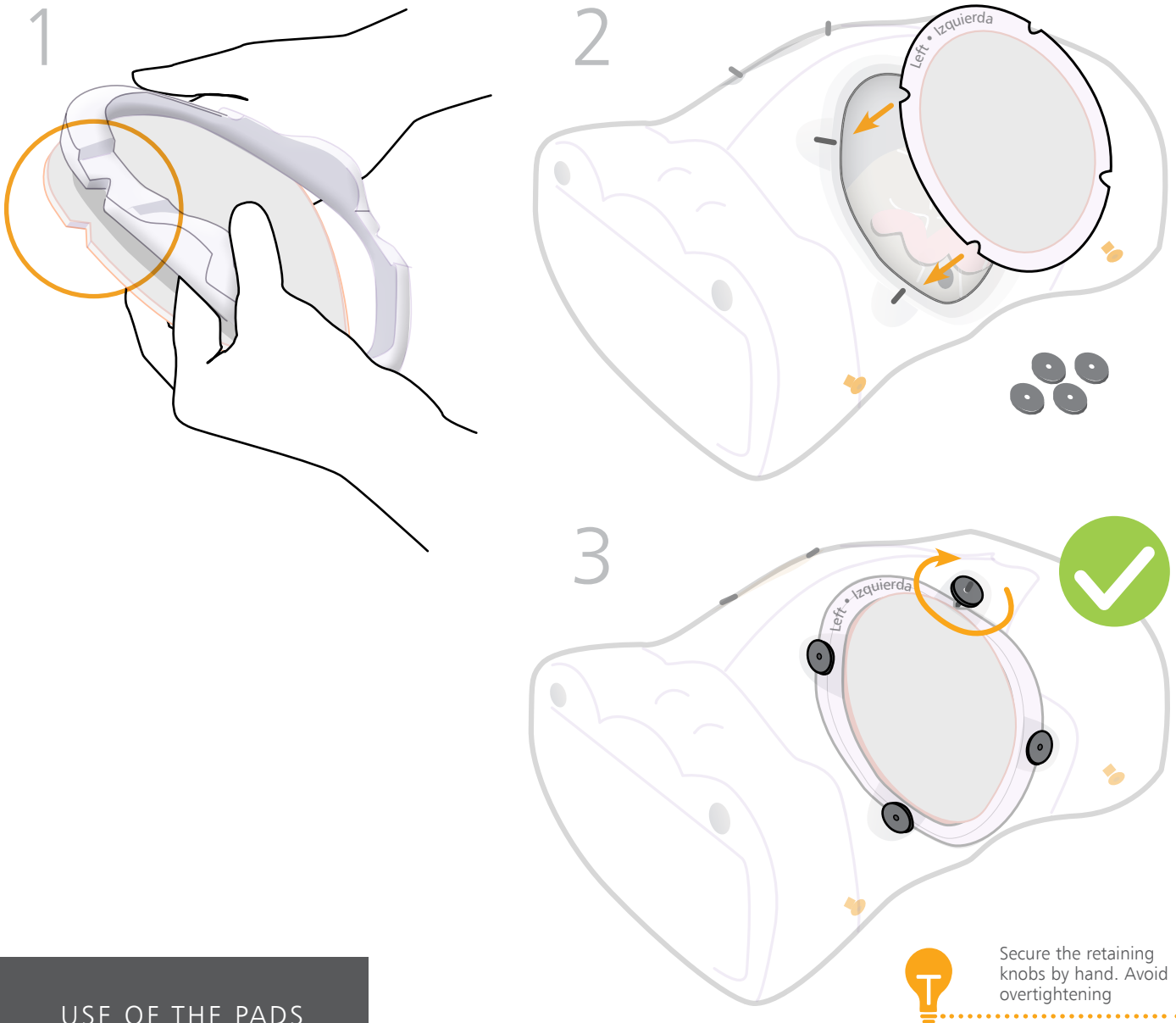


Left side

4



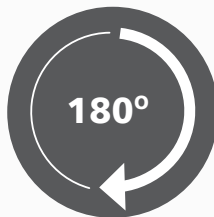
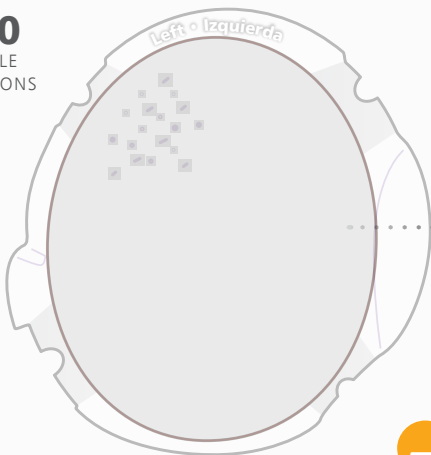
FITTING THE PARACENTESIS PADS



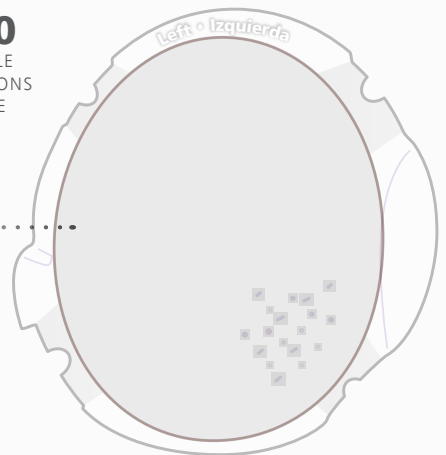
USE OF THE PADS

Each pad can withstand **200 needle insertions**

100
NEEDLE
INSERTIONS

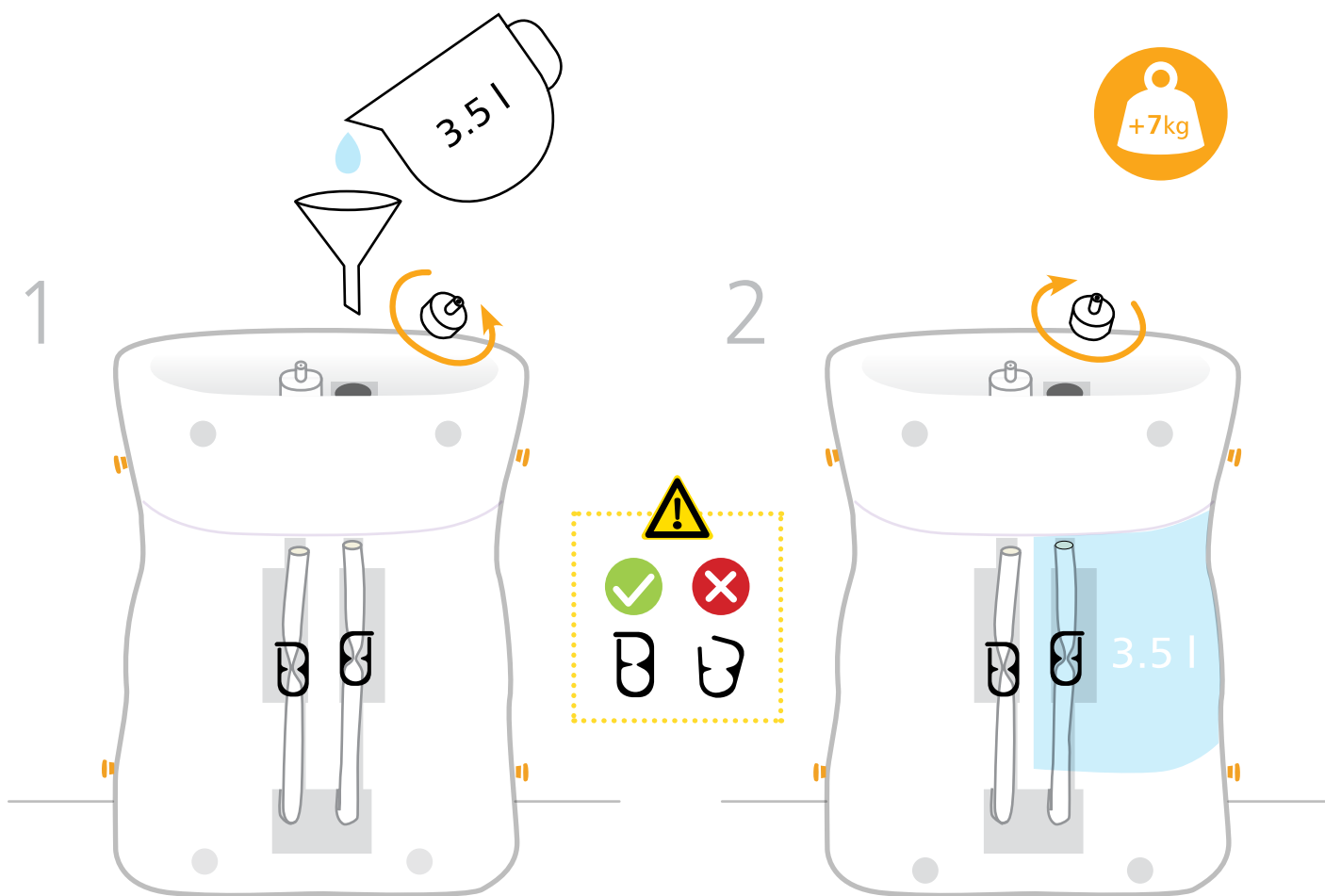


100
NEEDLE
INSERTIONS
MORE

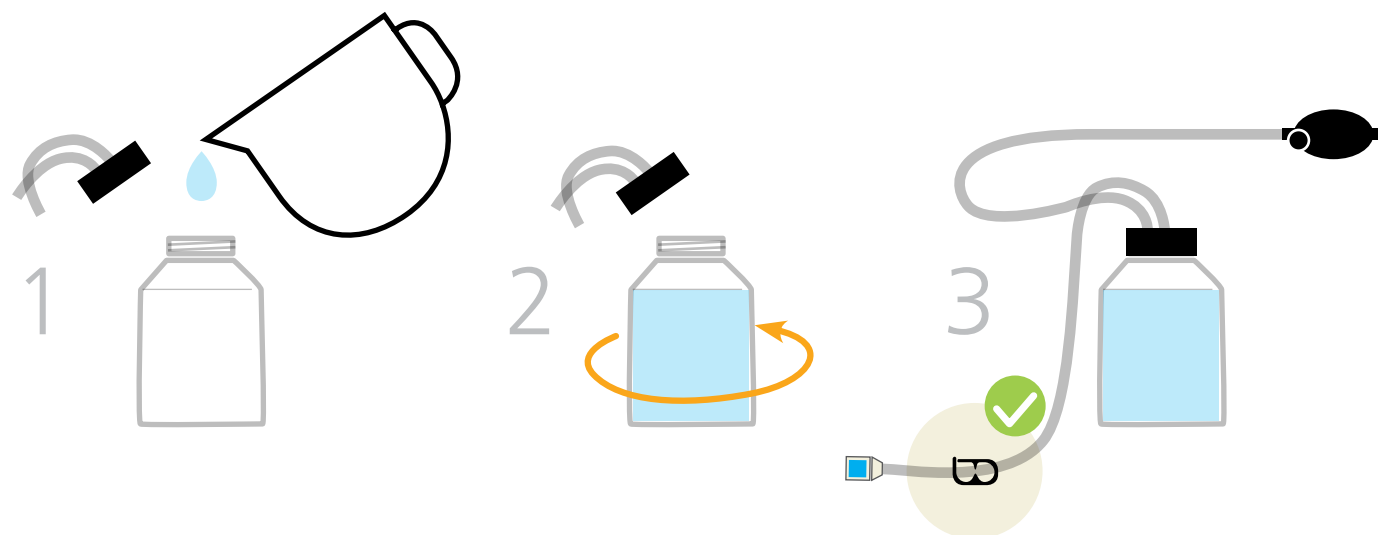


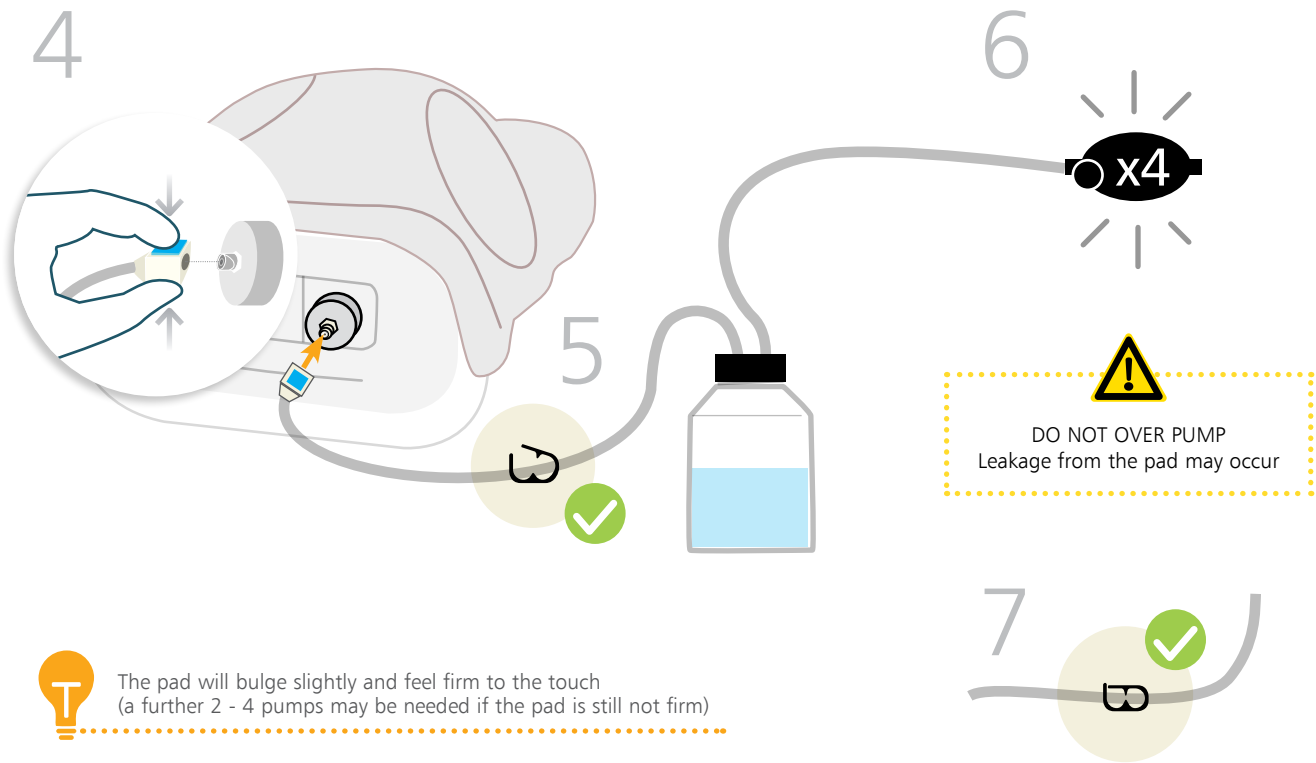
The shelf life can be seen on the bottom of each pad. Performance of the pad could be reduced after this date

ADDING THE ASCITES FLUID (WATER)



USING THE LARGE VOLUME REFILL SYSTEM (Optional)

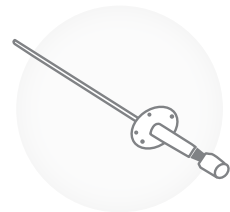




DIAGNOSTIC PROCEDURE



THERAPEUTIC PROCEDURE



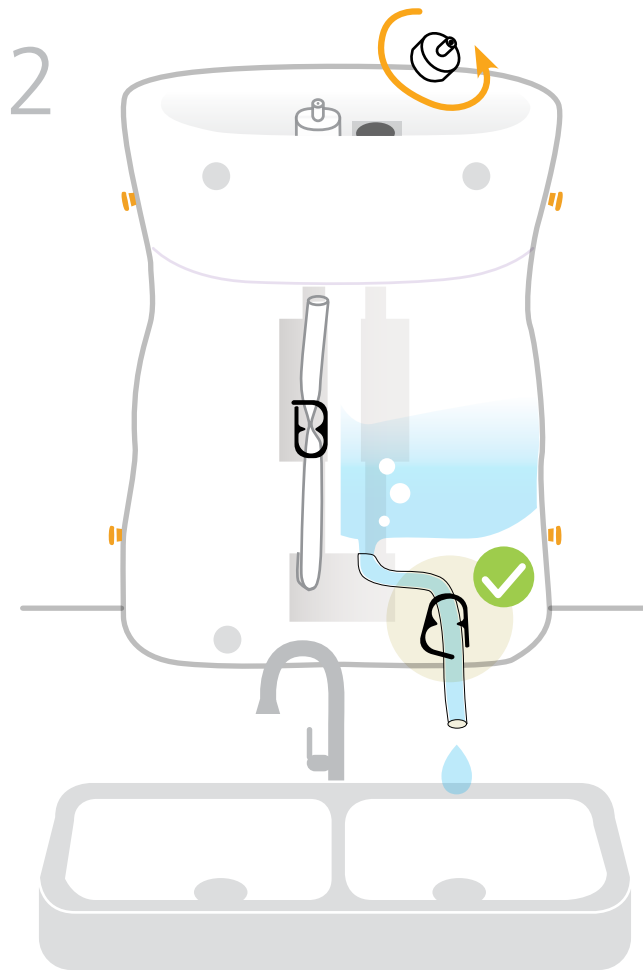
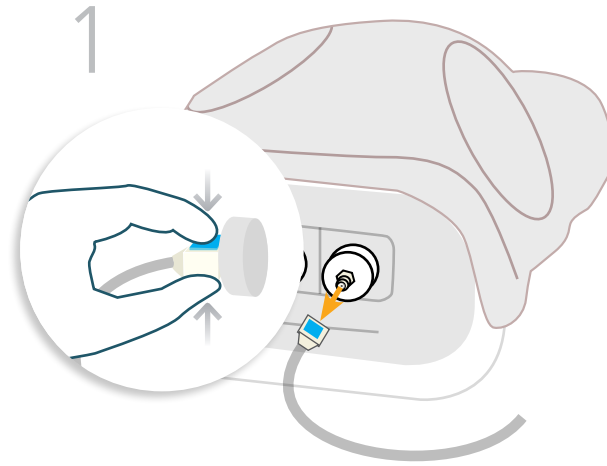
ULTRASOUND PROCEDURE




TAKE A LOOK AT OUR
PARACENTESIS TRAINER VIDEO

VISIT THE WEBSITE
limbsandthings.com
OR YOUTUBE CHANNEL
youtube.com/limbsandthings

CLEANING
AND STORAGE
AFTER USE



 You may need to tilt the model slightly to empty remaining water

DRY
 24h



YOU MAY
ALSO BE
INTERESTED IN...

CHEST DRAIN
& NEEDLE
DECOMPRESSION
TRAINER

60230 61230



ABDOMINAL
EXAMINATION
TRAINER

60000 60054



CATHETERIZATION
TRAINERS

60850 60870

60851 60869

60852 60873

60853 60871

60854 60872

