



## KNEE ASPIRATION & INJECTION TRAINER WITH ULTRASOUND CAPABILITIES

An anatomically accurate adult knee model for aspiration of synovial fluid and joint injection from both the lateral and medial aspects, using ultrasound-guidance or palpation.

The robust sealed knee includes knee joint, patella, patellar tendon and the suprapatellar space.

70103 LIGHT

70114 DARK

Key anatomical landmarks are realistic to palpate, enabling injection and aspiration aim to be practised, and accuracy improved. Discrete muscle, skin and fat layers, provide realistic tissue and needle response.

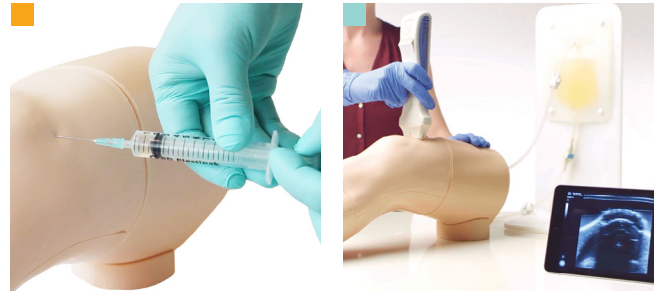


*Learning has never been more lifelike*

[limbsandthings.com](http://limbsandthings.com)

## ANATOMY

- Key anatomical landmarks are realistic to palpate:
  - Skin
  - Subcutaneous fat, quadriceps tendon & patellar ligament
  - Prefemoral, suprapatellar & Hoffa (infrapatellar) fat pad
  - Femur
  - Medial & lateral collateral ligament
  - Tibia
  - Patella
  - Joint space & synovial recess
  - Meniscus
  - Muscle mass of quadriceps



- Aspiration of synovial fluid
- Key internal landmarks visible under ultrasound

## QUALITIES

### REALISM

- Discrete muscle and skin layers provide realistic tissue and needle response
- Anatomically accurate synovial sac and palpable patella
- Realistic colour and consistency of synovial fluid

### KEY FEATURES

- 1000+ stabs per module with 21 gauge needle
- Precise, palpable anatomy with bony landmarks
- Robust, sealed knee unit that holds all anatomy
- Key internal landmarks visible under ultrasound
- Compatible with all standard ultrasound machines
- Echolucent material allows aspiration and injection under ultrasound-guidance
- Suitable for undergraduate and postgraduate medical study
- Knee skin is watertight

### VERSATILITY

- Caters for ultrasound-guided technique as well as palpation
- Can be used with leg supports for supine position, or without leg supports for side of bed position
- Separate Fluid Bag & Stand ensure the model is easy to use and mobile
- Clear indicator on fluid bag to prevent overfilling

### SAFETY

- Latex free

## SKILLS

- Injection into joint cavity
- Aspiration of synovial fluid from both the lateral and medial aspects
- Competence using ultrasound technology to perform systematic scanning techniques and examination of the knee joint
- Identification of anatomical landmarks using ultrasound guidance or the palpation method
- Patient positioning and management
- Recognition of joint effusion
- Ballottement

## WHAT'S INCLUDED

70103

70114

Ultrasound Knee Module for Aspiration & Injection  
Fluid Bag and Stand  
Synovial Fluid (including Syringe)  
Needle Set – 3 Green Needles, 1 Syringe, 1 Sharps Bin  
Leg unit, including removable supports  
Carry case

## CURRICULUM REFERENCES

### SPECIALIST GP TRAINEES

*RAGCP Lifelong Learning Curriculum: Appropriate Procedures, 2016*

### RHEUMATOLOGY SPECIALIST TRAINEES

*Royal Australasian College of Physicians, Rheumatology Advanced Training Curriculum, p.8*

### SPORTS MEDICINE SPECIALIST TRAINEES

*Australasian College of Sports Physicians, Sport and Exercise Medicine Specialist Training Manual, 2017*

AUS V.2 Mar 2021



REQUEST A QUOTE



REQUEST A DEMO



BUY ONLINE



CUSTOMER SUPPORT

limbsandthings.com