

**US-14a** **Ultrasound Neonatal Head Phantom (Normal Type)**

NEW

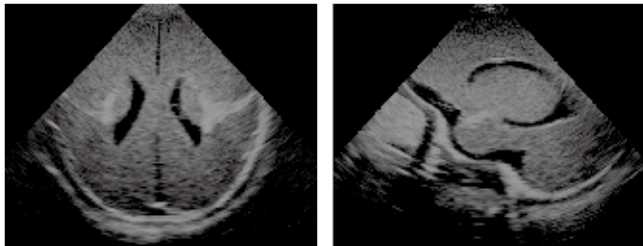


**World's First Ultrasound Neonatal Head Phantom**

Cranial or head ultrasound is one of most difficult scanning skills, and trainees have few opportunities for training. This head model features an accurate depiction of a newborn's cerebral anatomy, and facilitates a realistic user experience with its life-like soft touch.

**Training Skills**

- Scanning of brain anatomy in Sagittal (Angled Parasagittal), Coronal and Transverse planes via any fontanel.



**Anatomy**

- Skull
- Anterior fontanel, Posterior fontanel
- Cerebrum
- Cerebellum
- Brain-stem
- Lateral ventricle
- Ventricle
- Third cerebroventricle
- Fourth ventricle
- Septum lucidum

**Specifications :**

Set Includes:	Manikin Size:
1 ultrasound phantom	W5.1 x D5.1 x H6.7 inch
1 storage case	
1 instruction manual	

**US-14b** **Ultrasound Neonatal Head Phantom (Abnormal Type)**

NEW

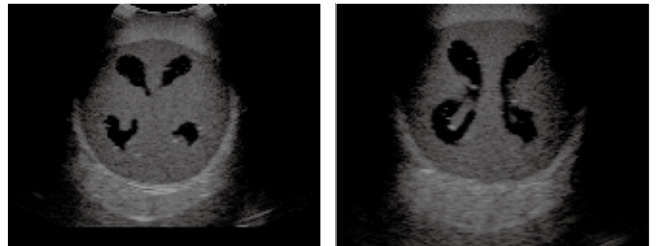


**World's First Ultrasound Neonatal Head Phantom with Hydrocephalus**

This head phantom is designed to demonstrate abnormal anatomy, such as Hydrocephalus, the shape of the skull is altered due to intracranial pressure.

**Training Skills**

- Scanning of brain anatomy in Sagittal (Angled Parasagittal), Coronal and Transverse planes via any fontanel.



**Anatomy**

- Skull
- Anterior fontanel, Posterior fontanel
- Hypertrophied lateral ventricle

**Specifications :**

Set Includes:	Manikin Size:
1 ultrasound phantom	W5.1 x D5.5 x H7.8 inch
1 storage case	
1 instruction manual	