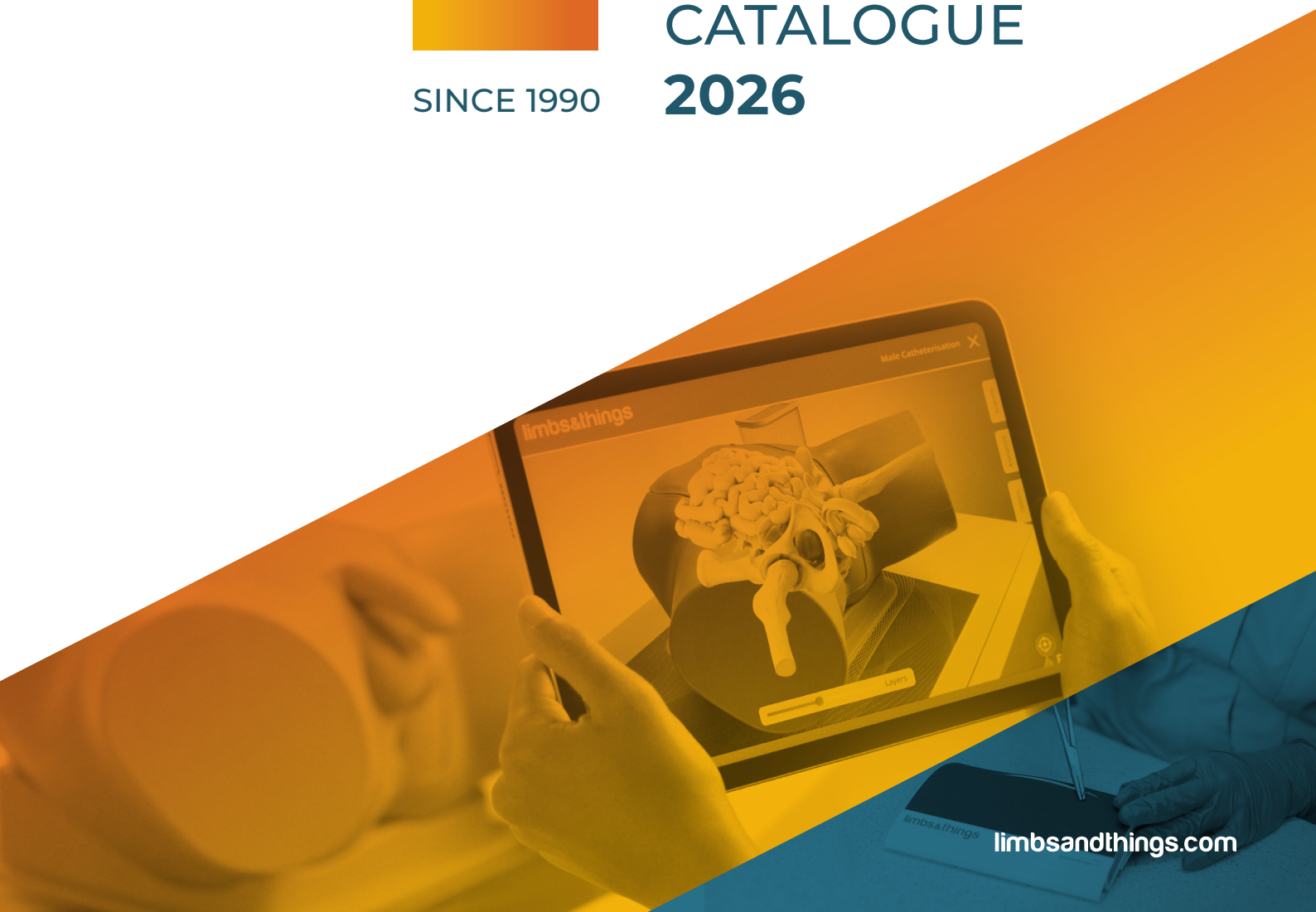




SINCE 1990

# UNITED KINGDOM CATALOGUE 2026





# Learning has never been more lifelike

Limbs & Things was founded after Medical Artist Margot Cooper discovered a gap in the learning journey of medical students who jumped straight from theory into practicing on animal flesh or patients. The need for a **safe and repeatable training** medium was evident, and so the vision for Limbs & Things was created.

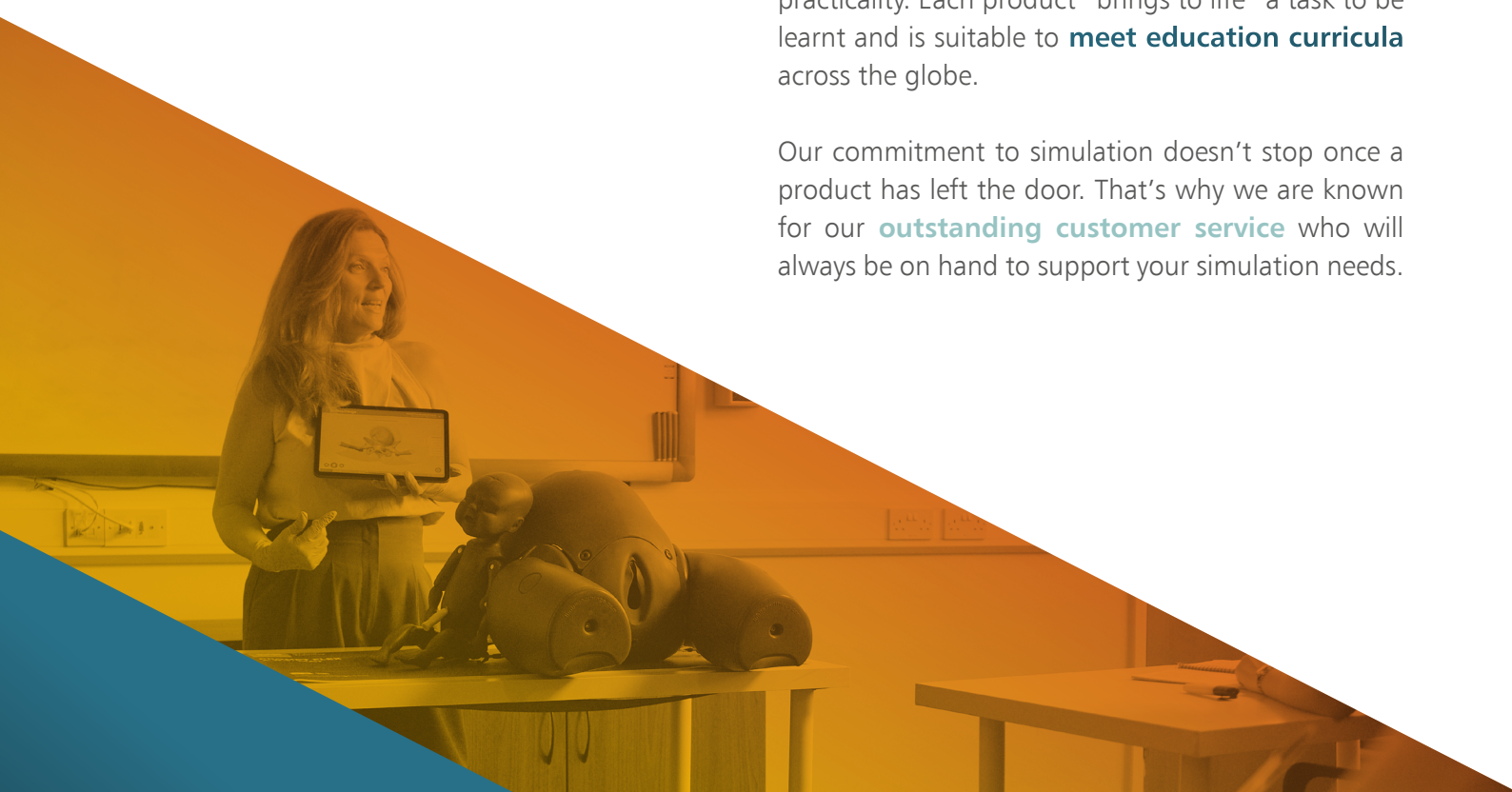
**In 1990**, Limbs & Things was born from a kitchen top in Bristol, England. Now a global business with offices in USA, Australia, and Sweden, the **family-owned** company still holds the same values and is proud to be supporting the learning of competent and confident clinicians around the world.



Our products are still **designed and manufactured in Bristol** before being exported to **70 countries worldwide**. Limbs & Things' committed team of experts collaborate with **medical leaders** to carefully create each groundbreaking innovation to achieve our mission.

Investing heavily in **research and development** ensures our models accurately replicate anatomy and feel lifelike to the touch, while utilising the best materials and technology to achieve realism and practicality. Each product "brings to life" a task to be learnt and is suitable to **meet education curricula** across the globe.

Our commitment to simulation doesn't stop once a product has left the door. That's why we are known for our **outstanding customer service** who will always be on hand to support your simulation needs.







“

*Greetings from Limbs & Things,*

*We are pleased to feature some more results from the groundbreaking effort of all our talented members of staff as seen in our new Arterial Puncture Wrist model highlighted in this catalogue.*

*Limbs & Things was founded 35 years ago, but it feels like it was just yesterday when the expression was 'see one, do one, teach one'.*

*We feel proudly responsible for enabling medical trainees and practitioners to gain important skills and understanding of practical medical procedures, through 'hands on' use of the models, and we continue to strive for advancements in training through technology such as our Augmented Reality range.*

*Margot Coster*

Limbs & Things President

”



# CONTENTS

## WHAT'S NEW

NEWEST UPDATES FROM LIMBS & THINGS 5

## PHYSICAL EXAMINATION

AUGMENTED REALITY (AR)	6
GENERAL PHYSICAL EXAMINATION	8
AUSCULTATION & CARDIOLOGY	9
ABDOMINAL EXAMINATION	10
FEMALE EXAMINATION	12
MALE EXAMINATION	16
OPHTHALMOLOGY	20
OTOLOGY	21

## PROCEDURAL SKILLS

CATHETERISATION	22
DIAGNOSTIC PROCEDURES	24
CHEST TRAUMA MANAGEMENT	26
TRAUMA MANAGEMENT	28
AIRWAY MANAGEMENT	32
VENEPUNCTURE (PADS)	35
CENTRAL LINE MANAGEMENT	36
ARTERIAL PUNCTURE	38
VENEPUNCTURE	40
VASCULAR ACCESS	43
INJECTION TECHNIQUE	42
PATIENT CARE	42 & 44
PARACENTESIS	43

## SPECIALIST SKILLS

BASIC SURGICAL SKILLS	46
MINOR SURGERY	48
OBSTETRICS & MIDWIFERY	52 & 62
GYNAECOLOGY	61
PAEDIATRICS	64
JOINT INJECTION	66
FRACTURES	71
WOUND CARE	72
LAPAROSCOPIC SURGERY	74

## RANGES

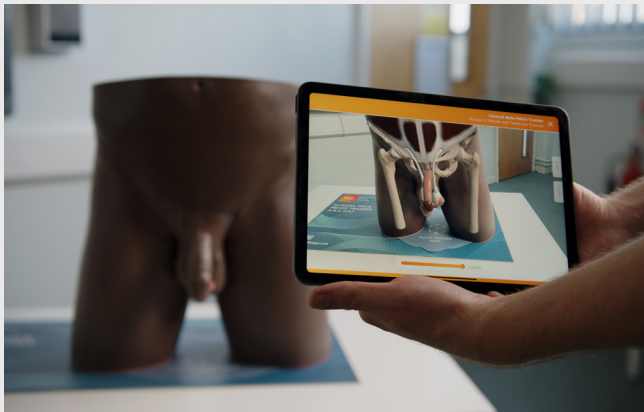
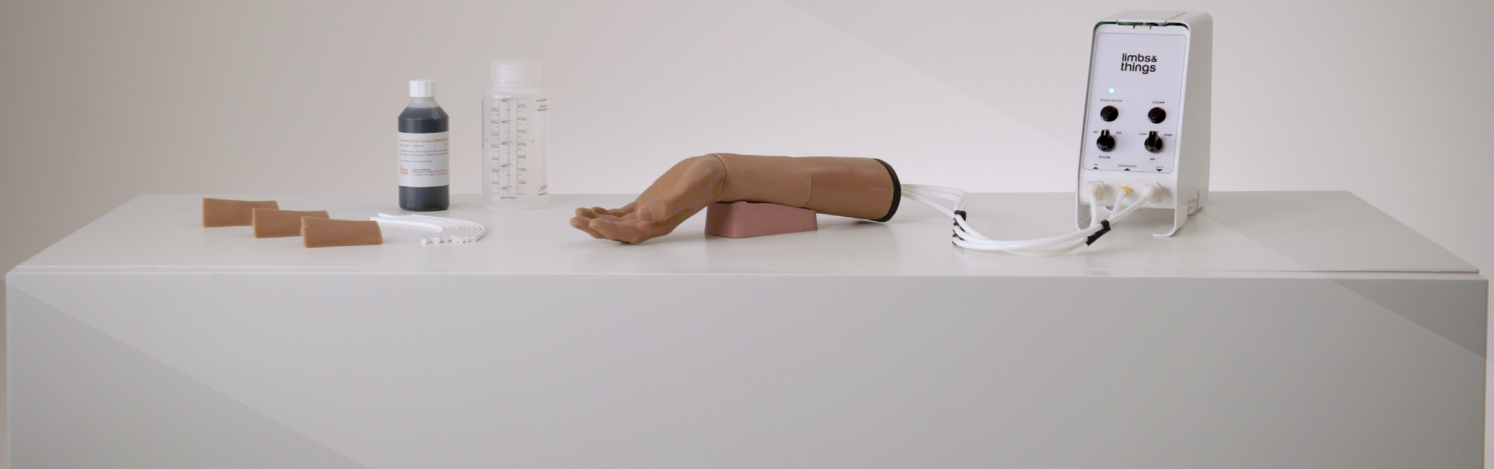
UNDERGRADUATE MEDICINE	78
ATLS	79
NURSE TRAINING	80
PARAMEDIC TRAINING	81
OSCE TRAINING	82
PHYSICIAN ASSOCIATE	83
ADVANCED PRACTICE	84
CLINICAL ULTRASOUND	85
AUGMENTED REALITY (AR)	86



**NEW** Arterial Puncture Wrist

Designed for standardised and repeatable training, the Arterial Puncture Wrist supports confident performance at each stage of blood gas sampling, including line placement and using ultrasound to locate and access the artery.

Discover more on page 35.

**Clinical Male Pelvic Trainer (CMPT) with Augmented Reality**

The CMPT now includes Augmented Reality, allowing trainees to interact with the model's internal anatomy on their smart device. Increase understanding of internal pathologies and visualise underlying conditions.

Discover more on page 18.







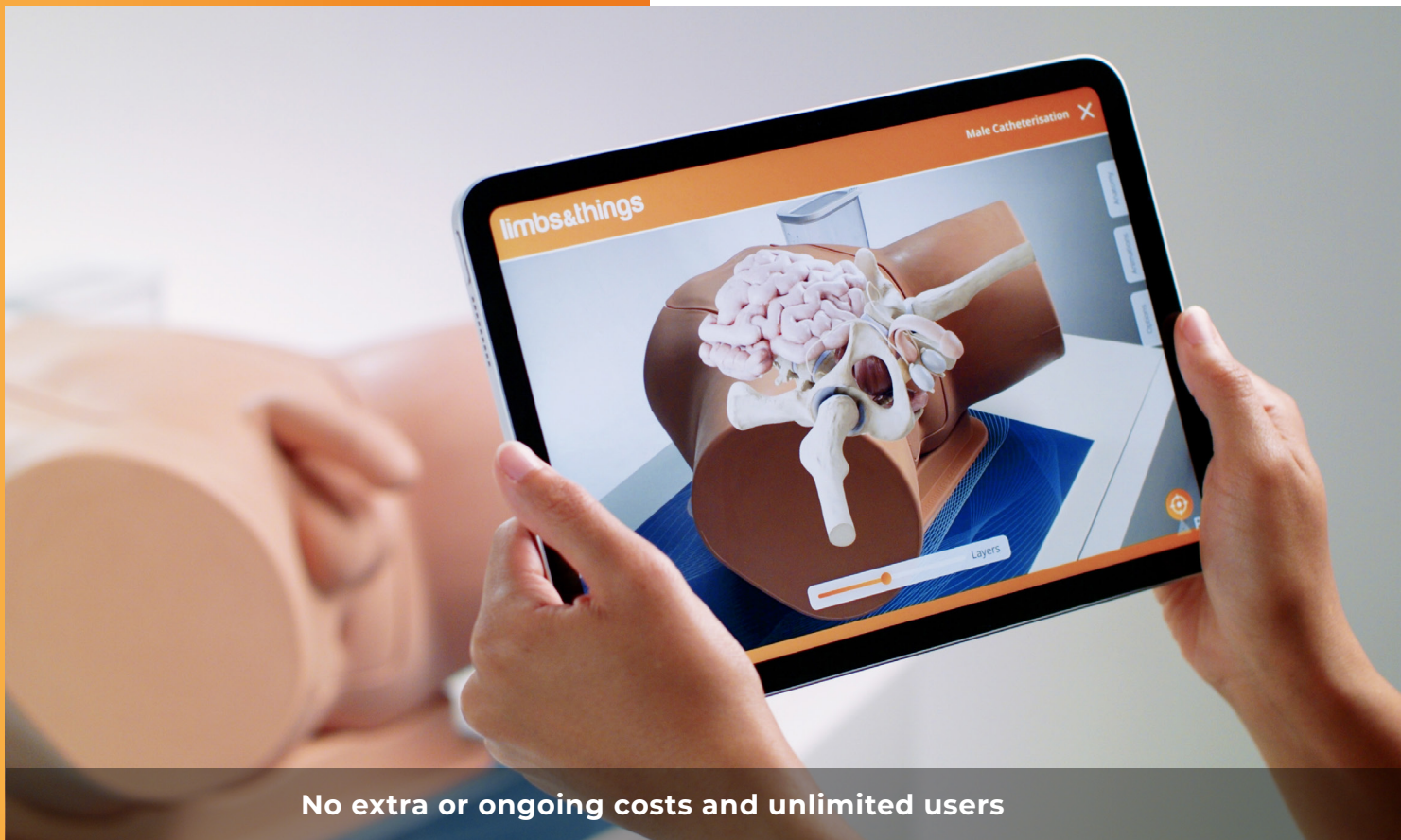
# AUGMENTED REALITY

Interact with your trainer's internal anatomy on your smart device.

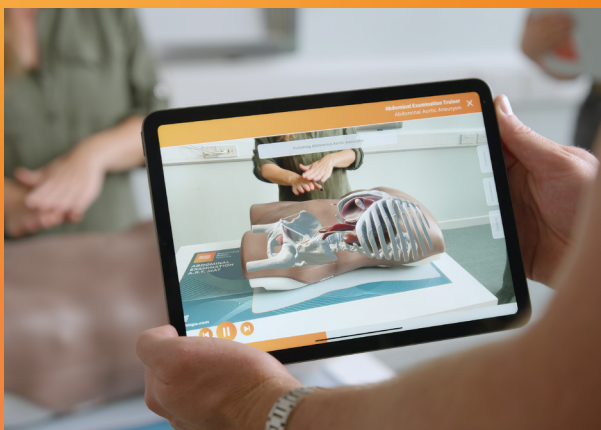
## Add Augmented Reality to your training sessions.

By allowing learners to visualise anatomy, Augmented Reality (AR) bridges the knowledge gap between theory and practice.

AR makes engaging lessons easy. Multiple students can learn simultaneously using the app, while others get hands on with the trainer.

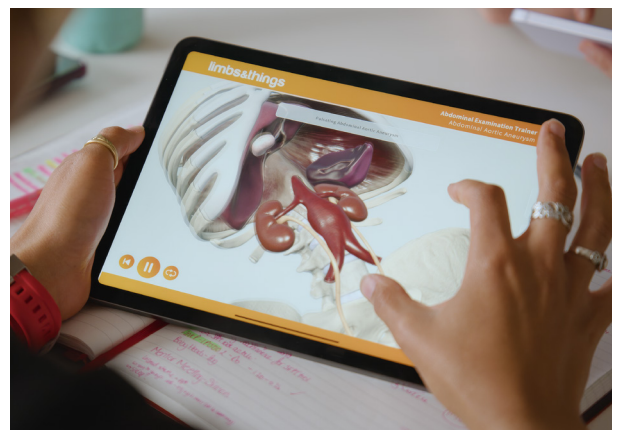


No extra or ongoing costs and unlimited users



### With the trainer in class

Learners can use their own devices to view the internal anatomy



### During independent study

Outside of class, students can continue learning using the same materials



## AR unlocks different ways to learn

Keep the whole class engaged during training sessions

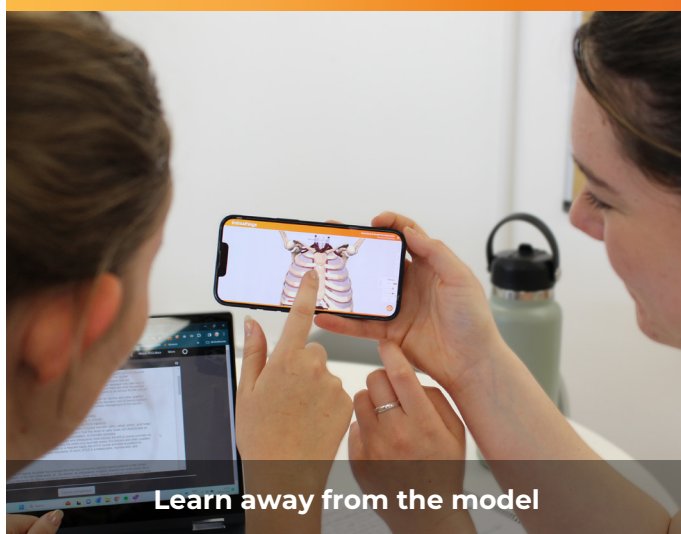


Combine with hands on training



Multiple students at once

Continue learning outside the classroom



Learn away from the model



Study with the same materials used in class

### FEATURES

- Interact with your trainer's internal anatomy
- Visualise procedures with animations
- Explore different pathological presentations

### VERSATILITY

- Run engaging and memorable lessons
- Multiple students learning at once
- Continued learning away from the model

### SPECIFICATIONS

- Included with compatible models
- No extra or ongoing costs
- Unlimited users



Find out more at [limbsandthings.com](https://limbsandthings.com)

Visit the back page of the catalogue to download the AR app and start exploring now

# CARDIOVASCULAR AND RESPIRATORY EXAMINATION (CaRE)

91000

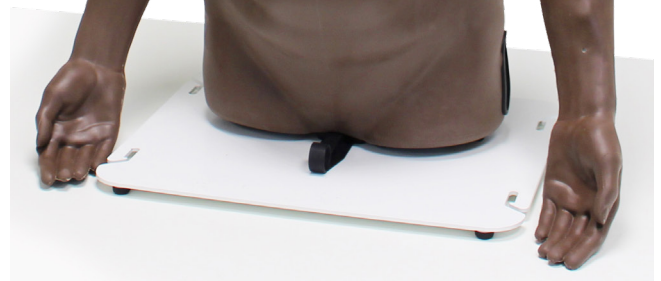
91100



The CaRE (Cardiovascular and Respiratory Examination) Trainer teaches the key skills needed to carry out a cardiovascular or respiratory examination.

The CaRE Trainer has lifelike chest movement, apex beat, pulses, thrills & heaves. Along with 23 heart sound profiles and 10 lung sounds that can be listened to via the LimbPAD.

CaRE includes 31 clinical cases that range from common to complex pathologies. The clinical cases showcase the **Patented** technology with the pulses, lung & heart sounds, mouth sounds and chest movement all synchronising together. These features synchronising together allows the model to realistically represent a real patient.



## ANATOMY

- Anatomically correct auscultation & palpation sites
- Representative of a 55-65 year-old
- Attachable breasts with realistic feel
- Trachea with jugular notch
- Articulating arms

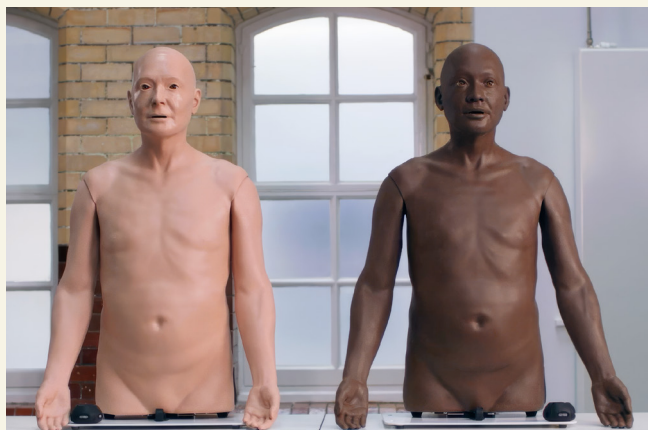


## SKILLS

- Auscultation
- Palpation
- General patient inspection
- Clinical examination skills
- Diagnostics skills
- Tissue management







## QUALITIES

### KEY FEATURES

#### Pulses

- Realistic radial, femoral & carotid pulses with 6 different characteristics available at rates from 30 to 170 BPM

#### Apex beats

- Apex beats in both the normal & displaced location at varying pulse rates

#### Heaves

- Visible & palpable heaves

#### Thrills

- Palpable thrills over the 4 heart valves

#### Trachea

- Realistic feel of trachea & larynx with the ability to displace the trachea to the left & right

#### Auscultation

- Heart & lung sounds across chest & back
- 23 individual heart sounds
- Each heart sound includes 4 heart valve locations (aortic pulmonary, tricuspid & mitral valves)
- 10 individual lung sounds

#### Breathing

- Visible breathing with realistic symmetrical & asymmetrical chest rise & fall at variable rates, patterns, & depth.
- Realistic palpation of moving chest
- Mouth sounds

### VERSATILITY

- Can be used upright, 45° or supine.
- LimbPAD can be connected to a speaker to play sounds out loud.
- Can be used in a classroom or clinical setting



## WHAT'S INCLUDED

CaRE Torso
LimbPAD
Attachable Breasts
Base & Straps
Power Cord
USB C Cable

## Abdominal Examination Trainer

60000

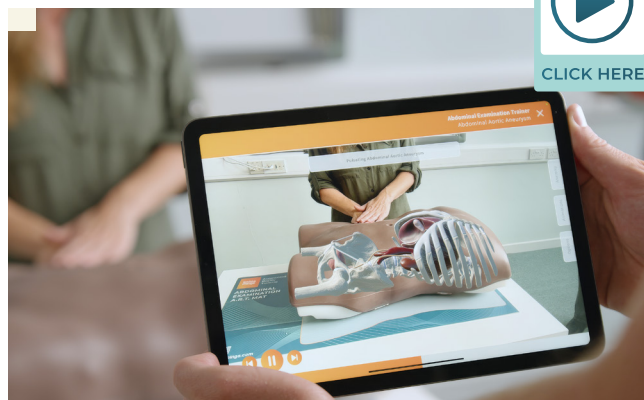
60054

An anatomically accurate adult torso, used to teach and practise the palpation, auscultation and percussion elements of abdominal or gastrointestinal (GI) examination.

With interchangeable organs of varying sizes, and an integrated MP3 player providing realistic sounds, the trainer provides the ability to recognise and differentiate a range of abnormal organs and pathologies.



CLICK HERE



### SKILLS

- Familiarity with the abdominal regions & underlying anatomy
- Practice in abdominal palpation, auscultation & percussion
- Ability to differentiate normal from abnormal anatomy
- Identification of ascites, specifically shifting dullness & fluid thrill
- Identification of gaseous distension & bowel obstruction
- Ballottement of kidneys
- Professional-to-patient communication
- Increased understanding of internal anatomy & the effects of pathologies with AR



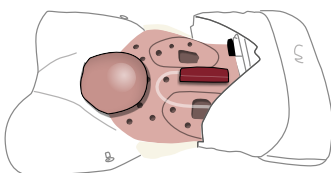
#### INCLUDES AUGMENTED REALITY

Discover the benefits on page 6

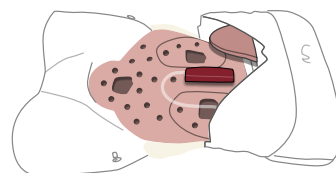
- No ongoing costs and unlimited users
- Bridge the learning gap between theory and practice
- Interact with internal structures to build understanding
- Visualise both male and female anatomy
- Understand organ and pathology presentations
- Multiple students learning at once
- Materials to learn with outside of the classroom

### SET-UP EXAMPLES FOR SCENARIOS

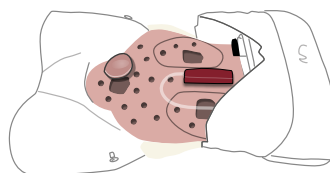
ACUTE URINARY  
RETENTION - BLADDER



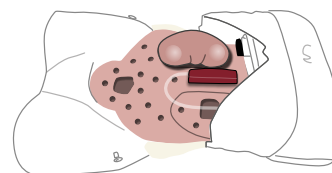
SLIGHTLY ENLARGED  
LIVER



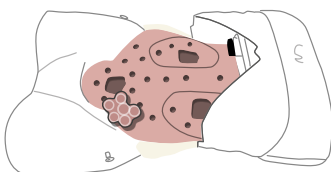
OVARIAN CYST - SMOOTH  
SOFT MASS



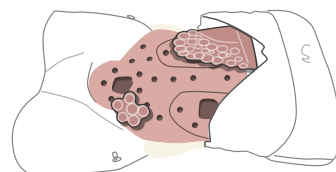
ENLARGED KIDNEY



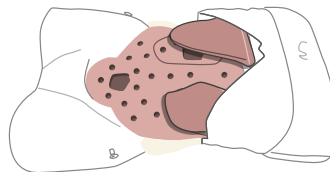
CARCINOMA ON MASS  
IN LEFT ILIAC FOSSA



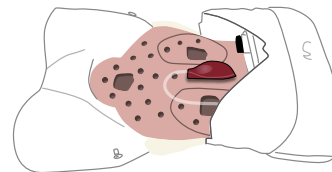
CARCINOMA WITH  
LIVER METASTASIS



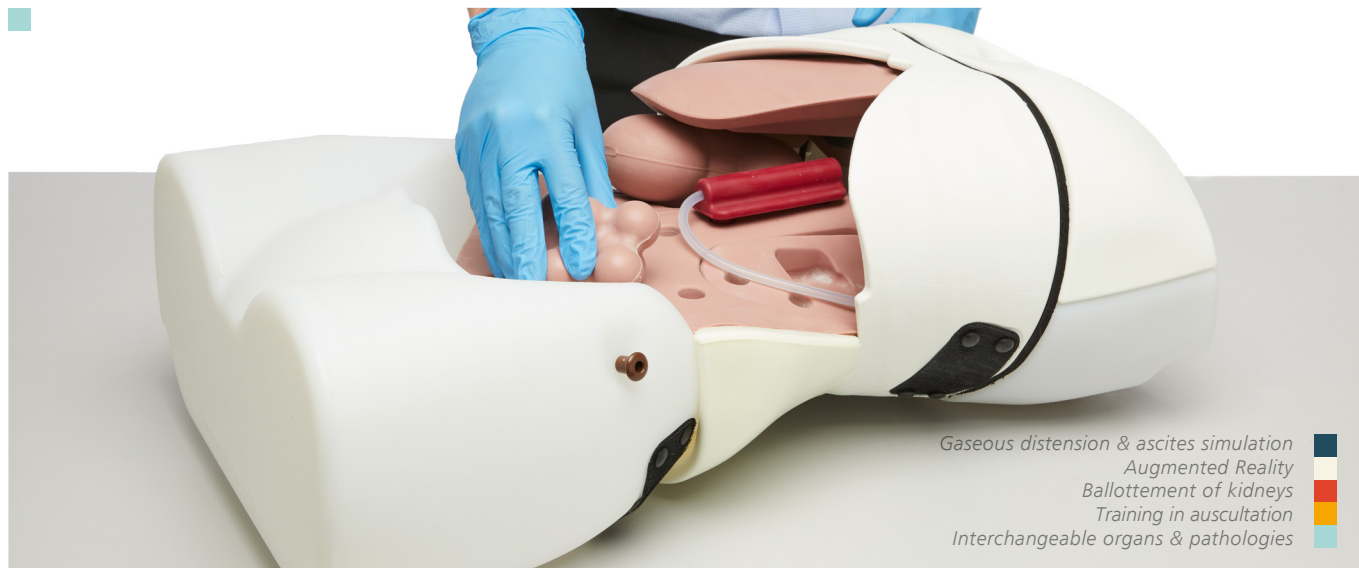
LYMPHOMA



AORTIC ANEURYSM







Gaseous distension & ascites simulation  
Augmented Reality  
Ballottement of kidneys  
Training in auscultation  
Interchangeable organs & pathologies

## QUALITIES

### REALISM

- Organs feel realistic on palpation & respond appropriately to percussion
- Lifelike quality of abdominal skin accommodates stretching for gaseous distension & ascites simulation
- Realistic ballottement of enlarged kidney

### VERSATILITY

- Abdominal skin is simple to remove, allowing quick & easy changeover of organs
- Suitable for both bench top use & hybrid use with Simulated Patient
- Model can be rolled onto side for examination of ascites & shifting dullness

### KEY FEATURES

- Interchangeable organs & pathologies of varying sizes can be quickly & easily inserted into the abdomen
- Trainer or Simulated Patient can vary respiratory movement of liver & spleen
- Integral amplifier & surface mounted MP3 player allow training in auscultation of normal & high-pitched or obstructed bowel sounds, renal & aortic bruits in variable locations
- Volume of bowel sounds can be adjusted and MP3 player allows for additional sounds to be loaded
- Distension set allows for the following:
  - Realistic checking for ascites using percussion, shifting dullness or fluid thrill technique
  - Simulation of bowel obstruction on percussion & auscultation
- Pulse bulb allows simulation of normal & aneurysmal aortic pulse

### SAFETY

- Latex free

### CLEANING & CARE

- Skin surface is washable using soap & water

## ANATOMY

- Torso featuring abdomen, pelvis & lower part of thorax
- Bony landmarks include ribs, costal margin, xiphisternum, pubic crest & anterior superior iliac spines
- 3 Livers: slightly enlarged, enlarged with smooth edge & enlarged with irregular edge
- 2 Spleens: slightly enlarged & markedly enlarged
- 2 Enlarged Kidneys
- Distended Bladder
- 2 Aortas: normal & aneurysmal
- Set of 6 Abdominal Pathologies includes:
  - 4 Smooth masses: 2 sizes, each with hard & soft version
  - 2 Irregular hard masses
- Distension Set includes:
  - Ascites bag
  - Gaseous distension bag, pump & foam insert
- Simplified representation of lower thoracic & lumbar spine



Ideal for **OSCE** preparation and assessment.

## WHAT'S INCLUDED

Abdominal Examination Base Unit  
Abdominal Examination Skin  
Abdominal Examination Rectus Bag  
Abdominal Examination Organ Locator  
Abdominal Wall  
Abdominal Examination Livers (Set of 3)  
Abdominal Examination Spleens (Set of 2)  
Abdominal Examination Kidneys (x2)  
Abdominal Examination Bladder  
Abdominal Examination Pathologies (Set of 6)  
Abdominal Examination Aorta (Set of 2)  
Abdominal Examination - Distension Set  
International 5V DC Power Supply  
AA Batteries (x4)  
Carry Case (x2)  
Augmented Reality Mat

# Clinical Female Pelvic Trainer (CFPT)

STANDARD

60900

60930



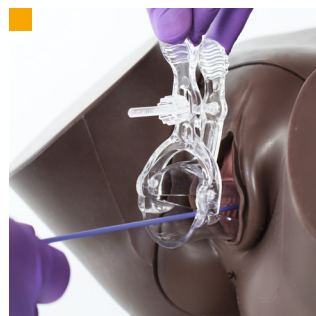
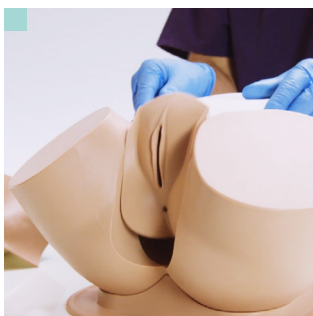
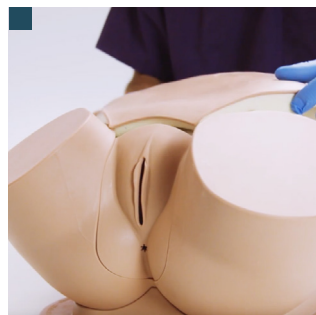
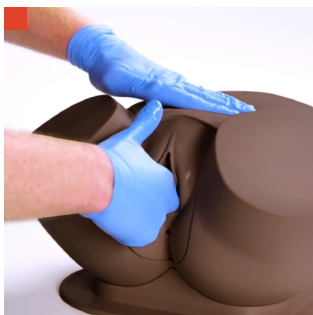
The CFPT is an anatomically accurate and tactile representation of the female pelvis. It is the ideal platform for hands-on examination as well as diagnosis of female conditions and minor pathologies. It can be used for many levels of training from undergraduate onwards, as well as in family medicine.



Validated in the  
*International Journal of Gynaecology and Obstetrics*.  
Volume 124, pp. 270-3, 2014.

## SKILLS

- Recognition of perineal & pelvic anatomy including bony landmarks
- Digital vaginal examination
- Bi-manual examination
- Cervical smear procedure (including use of speculum)
- Digital rectal examination
- Professional-to-patient communication



Bi-manual examination  
... allowing uterine module  
to be lifted out

Abdominal wall lifts off...  
Use of speculum  
and cervical broom

## QUALITIES

### ANATOMY

- Abdomen, pelvis & genitalia
- Vagina, cervix, anus & lower bowel
- Advanced model comes with interchangeable uterine modules with different complications
- Modules:
  - Normal - Nulliparous Cervix
  - Large Fibroid - Nulliparous Ectropion Cervix
  - Small Fibroid - Nulliparous Polyp Cervix
  - Ovarian Cyst - Multiparous Cervix
  - Retroverted - Multiparous Cervix
  - 10-12 Weeks Pregnant
  - 14-16 Weeks Pregnant

### REALISM

- Abdominal wall with fat layer makes palpation realistic
- Labia can be parted realistically
- Each uterus is presented at a realistic anatomical angle

### KEY FEATURES

- Partial thighs aid anatomical orientation
- Soft and strong perineum and labia

### VERSATILITY

- Modules can be changed quickly and easily

### SAFETY

- Latex free

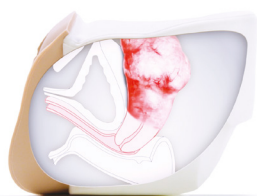
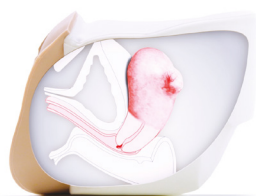
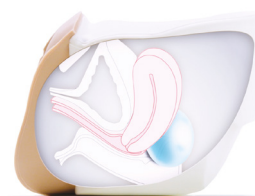
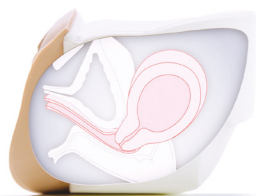
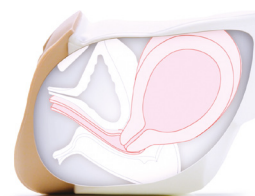
### CLEANING & CARE

- Skin surface is washable using soap & water

## ADVANCED

60905

60935

**60920 | 60937**MODULE 1  
Normal - Nulliparous Cervix**60921 | 60938**MODULE 2  
Large Fibroid - Nulliparous Ectropion Cervix**60922 | 60939**MODULE 3  
Small Fibroid - Nulliparous Polyp Cervix**60923 | 60940**MODULE 4  
Ovarian Cyst - Multiparous Cervix**60924 | 60941**MODULE 5  
Retroverted - Multiparous Cervix**60925 | 60942**MODULE 6  
10-12 Weeks Pregnant**60926 | 60943**MODULE 7  
14-16 Weeks Pregnant

## WHAT'S INCLUDED

## STANDARD

## ADVANCED

CFPT Abdominal Insert	✓	✓
CFPT Module 1: Normal - Nulliparous Cervix	✓	✓
CFPT Module 2: Large Fibroid - Nulliparous Ectropion Cervix	×	✓
CFPT Module 3: Small Fibroid - Nulliparous Polyp Cervix	×	✓
CFPT Module 4: Ovarian Cyst - Multiparous Cervix	×	✓
CFPT Module 5: Retroverted - Multiparous Cervix	×	✓
CFPT Module 6: 10-12 Weeks Pregnant	×	✓
CFPT Module 7: 14-16 Weeks Pregnant	×	✓
Lower Torso	✓	✓
Base	✓	✓
Tube of Aqueous Gel	✓	✓
Carry Case	✓	✓(x2)

Patents granted: • US6336812 • EP099027 • DE69804793 • CA 2293585 • ZL98806331 • HK1023832 • 755575 Australia



## Breast Examination Trainer - Advanced &amp; Standard

## ADVANCED

40201

41201

## STANDARD

40200

41200



Our Breast Examination Trainer provides a highly realistic learning platform for acquiring the skills required to perform Clinical Breast Examination (CBE).

Featuring 6 readily interchangeable and multi-positional pathologies, providing healthcare professionals with the tools to identify various complications and pathologies, including carcinomas, cysts, fibrocystic disease and fibroadenoma.



Both *Simulated Patient* and *Bench Top* training can be used in alignment with healthcare professionals promoting best practice techniques to trainees and patients, or for any undergraduate programmes running **OSCEs**.



This product was developed in close collaboration with leading clinicians:

- Mr Peter Donnelly, Torbay Hospital, UK
- Clinical Skills Resources Centre, University of Liverpool, UK
- Clinical Practice Centre, St James's University Hospital, Leeds, UK

## QUALITIES

### ANATOMY

- Realistic soft tissue & breast anatomy
- Pathologies supplied: carcinomas (2cm, 3cm, 5cm), cyst, fibrocystic disease, fibroadenoma

### REALISM

- Soft tissue looks & feels realistic
- Clavicular & axilla pads for accurate lymph node placement

### KEY FEATURES

- Pathologies can be placed in various location points & are easily changeable
- Dual purpose product: bench top & Simulated Patient
- Hard torso available for bench top use

### VERSATILITY

- Comfortable to wear for long periods of time during OSCEs & assessments

### SAFETY

- Latex free

### CLEANING & CARE

- Skin surface is washable using soap & water

#### Patents granted:

• US6336812 • EP099027 • DE69804793 • CA 2293585  
• ZL98806331 • HK1023832 • 755575 Australia



- Soft tissue looks & feels realistic
- Self Breast Examination training
- Pathologies fit securely into supports
- Clavicular & axilla pads for accurate lymph node placement

## SKILLS

- Clinical Breast Examination (CBE)
- Self-Breast Examination (SBE)
- Identification of anatomical landmarks
- Identification of lymph nodes (axillary, supra & infraclavicular)
- Diagnosis of pathologies
- Professional-to-patient communication

## OPTIONAL EXTRAS

40209 Medium Carry Case

## WHAT'S INCLUDED

	ADVANCED	STANDARD
Wearable Examination Breasts	✓	✓
Pathologies	✓	✓
Breast Examination Inserts	✓	✓
Breast Pathologies Supports	✓	✓
Breast Back Plates	✓	✓
Breast Examination Torso	✓	✓
Lymph Node Pads & Lymph Nodes	✓	x

## Ultrasound-Guided Breast Biopsy Phantom

KKUS-9

Develop ultrasound-led needle biopsy skills step-by-step with these 2 breast models. Trainees can develop ultrasound image reading skills and practice accurate needle biopsy. Start with developing coordination and visualization on the transparent breast, and progress to full needle biopsy procedure on the opaque breast model.

## SKILLS

- Visualisation of the targets and needle journey
- Tissue sampling under ultrasound guidance
- Needle biopsy under ultrasound guidance
  - Fine needle aspiration biopsy
  - Core needle biopsy
  - Mammotome biopsy
- Hand-eye coordination



## QUALITIES

### KEY FEATURES

- Targets are embedded in 3 layers to provide opportunities of working with a variety of needle paths
- Breast phantom tissue accurately represents softness and resistance of the mammary gland
- Excellent ultrasound image quality
- Targets are coloured to confirm successful sampling

## Male Rectal Examination Trainer - Standard &amp; Advanced

## STANDARD

60170

60186

## ADVANCED

60171

60187



The Rectal Examination Trainer offers realistic, repeatable training in the core skill of digital rectal or PR examination.

Both models include a contractible anal sphincter, allowing for anal tone assessment and a faecal impaction clip in module.



The **Standard** model focuses on learning core rectal nursing procedures and excludes any pathologies.

The **Advanced** model comes with a range of prostates and 2 perineums, allowing trainees to become familiar with normal and abnormal findings and acquire key diagnostic skills. External ano-rectal illustrations are ideal for incorporation into scenarios and **OSCE** assessments.

## SKILLS

- Digital examination of the anus, rectum & prostate
- Assessment of anal tone
- Identification of impacted faecal matter in the rectum
- Identification of external anorectal conditions\*\*
- Professional-to-patient communication
- Insertion of rectal medication (micro enemas, suppositories)

## QUALITIES

\*\* Advanced model

## ANATOMY

- \*Improved model enhances the realistic feel & durability of trainer
- Buttocks, anus, rectum, prostate & perineum
- Pathological perineum – with polyp & rectal cancer\*\*
- 4 abnormal prostates\*\*:
- Benign unilateral enlarged
- Benign bilateral enlarged
- Unilateral carcinoma
- Bilateral carcinoma

## REALISM

- Soft, partible buttocks
- Realistic anus with resting tone & ability to contract

## KEY FEATURES

- Interchangeable prostates can be quickly & easily inserted, out of sight of the trainee\*\*
- Addition of impacted faecal matter allows trainees to recognise & distinguish this common finding
- Simulation of sphincter contraction allows trainees to assess anal tone
- Left lateral positioning
- Teaching aid pack featuring high-quality illustrations of nine external anal conditions\*\*

## VERSATILITY

- Trainer can also be presented in 'semi-standing' position using the optional **Standing Position Stand (60172)**

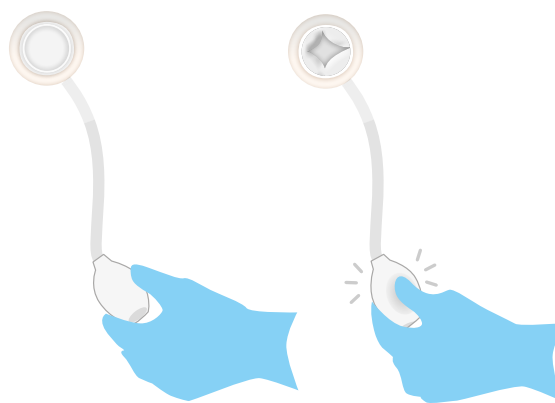
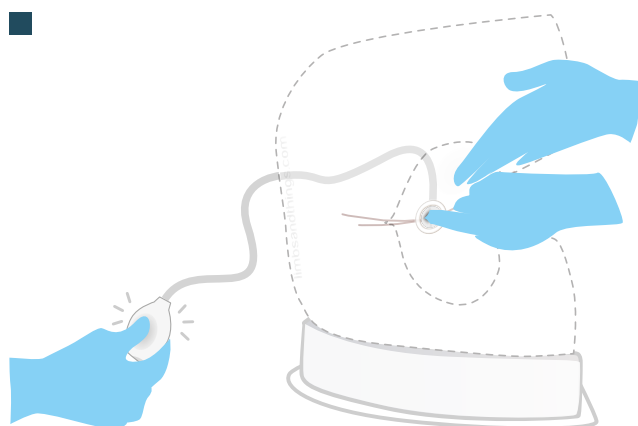
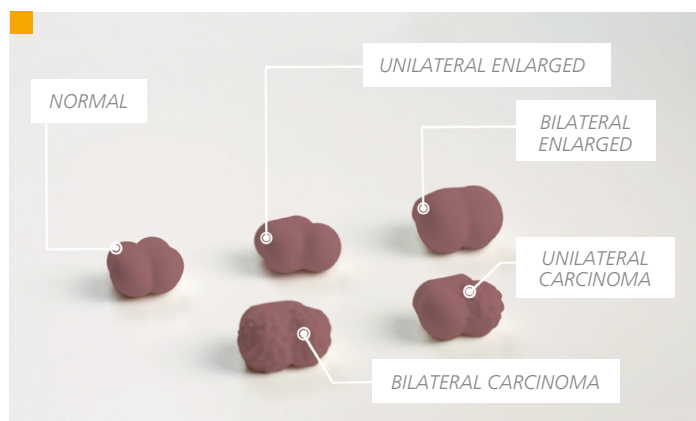
## SAFETY

- Latex free

## CLEANING &amp; CARE

- Skin surface is washable using soap & water





- External conditions illustration pack
- Range of prostates
- Anal tone assessment

## WHAT'S INCLUDED

### STANDARD

### ADVANCED

Base Unit	✓	✓
Left Lateral Stand	✓	✓
Normal Perineum with Anal Tone	✓	✓
Pathological Perineum with Anal tone	x	✓
Normal Prostate	✓	✓
Benign Unilateral Enlarged Prostate	x	✓
Benign Bilateral Enlarged Prostate	x	✓
Unilateral Carcinoma Prostate	x	✓
Bilateral Carcinoma Prostate	x	✓
Impacted Faecal Matter	✓	✓
External Conditions Illustration Pack	x	✓
Water-based Lubricant	✓	✓

## OPTIONAL EXTRAS

- 60172 Standing Position Stand
- 40209 Medium Carry Case
- 60185 / 60192 Upgrade from Standard Model

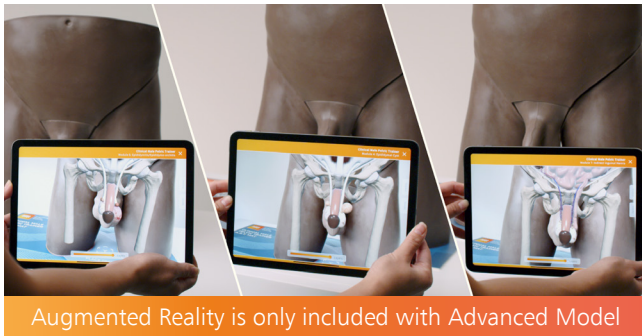
# Clinical Male Pelvic Trainer (CMPT)

STANDARD



60950

60964



An ideal platform for teaching and learning hands-on male pelvic examination and diagnosis.

The user-friendly design, combined with clear anatomic landmarks, and a range of male conditions and pathologies creates a realistic training experience for students across all levels of healthcare education from undergraduate level upwards.

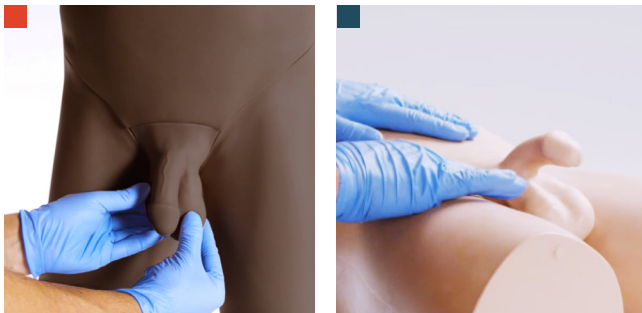
Validated in the *Journal of Surgical Education*  
Volume 74, Issue 3, May–June 2017.

Developed in collaboration with:

- The Clinical Skills Resource Centre, University of Liverpool, UK
- Imperial College, London, UK
- Guy's Hospital, London, UK
- Southmead Hospital, Bristol, UK
- University of Southampton, UK

## SKILLS

- Correct examination procedure of male pelvis
- Examination & evaluation of:
  - Normal anatomy
  - Testicular abnormalities
  - Abdominal & pelvic pain
- Dry catheterisation
- Professional-to-patient communication



Realistic training experience  
Penile cancer

Pelvic examination, supine position  
Diagnosis of pathologies

## QUALITIES

### ANATOMY

- Abdomen, pelvis & genitalia

#### Anatomy of the groin with clear anatomical landmarks:

- Anterior Superior Iliac Spine (ASIS)
- Pubic symphysis & tubercle

#### Genitalia includes:

- Penis with urethra
- 2 foreskins ( to demonstrate circumcised & uncircumcised)
- Scrotum (containing testicles with epididymis & vas deferens)

#### Pathologies (Advanced model only):

- Varicocele
- Testicular tumour & penile cancer
- Epididymal cyst
- Hydrocele
- Orchitis/Epididymo-orchitis
- Indirect inguinal hernia

### REALISM

- Soft tissue genitals & abdominal wall
- Accurate representation of internal anatomy & pathologies on the Augmented Reality app

### VERSATILITY

Soft tissue inserts can be removed & replaced

### KEY FEATURES

- Visualise underlying conditions with Augmented Reality

### SAFETY

- Internal fabrication of modules 5 & 7 contain latex.

### CLEANING & CARE

- Skin surface is washable using soap & water



ADVANCED

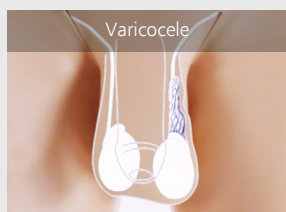
60951

60965



This model includes Augmented Reality

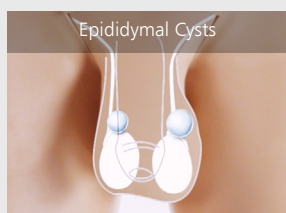
## Modules included with the Advanced Model



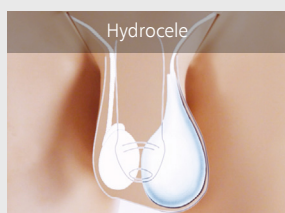
Varicocele



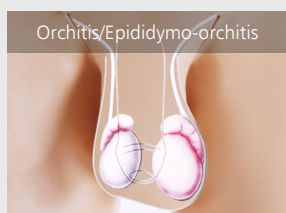
Testicular Tumour &amp; Penile Cancer



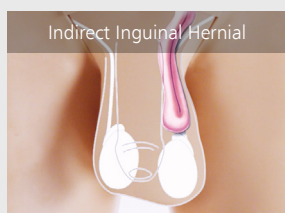
Epididymal Cysts



Hydrocele



Orchitis/Epididymo-orchitis

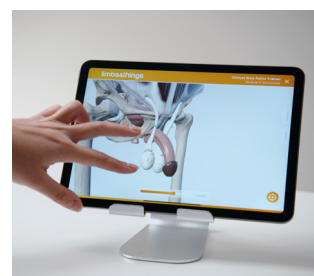
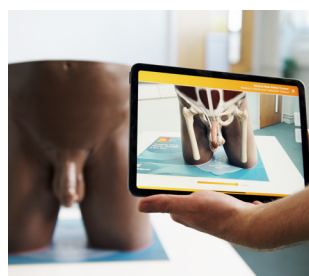


Indirect Inguinal Hernial

COMPATIBLE WITH  
**AUGMENTED REALITY**

Discover the benefits on page 6

- No ongoing costs and unlimited users
- Bridge the learning gap between theory and practice
- Interact with internal anatomy to build understanding
- Visualise the effects of different pathologies
- Multiple students learning at once
- Materials to learn with outside of the classroom



## WHAT'S INCLUDED

STANDARD

ADVANCED

CMPT Module 1: Normal	✓	✓
CMPT Module 2: Varicocele	×	✓
CMPT Module 3: Testicular Tumour & Penile Cancer	×	✓
CMPT Module 4: Epididymal Cysts	×	✓
CMPT Module 5: Hydrocele	×	✓
CMPT Module 6: Orchitis/Epididymo-orchitis	×	✓
CMPT Module 7: Indirect Inguinal Hernia	×	✓
CMPT Abdominal Insert	✓	✓
CMPT Pubic Bone	✓	✓(x2)
CMPT Foreskins Pack (each pack contains 2 foreskins & 3 lubricant sachets)	✓	✓(x2 pks)
Lower Torso	✓	✓
Support Base	✓	✓
LED Pen Torch	×	✓
Carry Case	✓	✓(x2)
Augmented Reality Mat	×	✓

## Eye Examination Trainers

Eye Examination Trainers are dependable training tools for teaching and practising the use of an ophthalmoscope, examining the ocular fundus, and learning and identifying diseases and conditions within the eye.

### Eye Examination Simulator

KKM82

KKM82M

KKM82D



#### KEY FEATURES

- 10 fundal slides feature real clinical images
- Adjustable dilation 3 steps (2.0mm, 3.5mm, 5.0mm), visual axis & depth of fundus slides allow for different degrees of challenge
- Soft & supple material making for realistic eyelid raising.
- Red reflex detectable during examination
- A study guide, covering the cases depicted on the slides, is included to assist in self-study

#### EYE EXAMINATOR SIMULATOR STANDARD 10 CASES

- Normal eye-ground
- Hypertensive retinopathy: arteriolar vasoconstriction grade 3, arteriolosclerosis grade 1, haemorrhages & cotton wool spots, simple vein concealment
- Simple/background diabetic retinopathy: microaneurysm, haemorrhages & hard exudates
- Papilloedema (chronic & acute sphase)
- Glaucomatous optic atrophy: glaucomatous optic disc cupping & nerve fiber defect
- Retinal vein occlusion (acute phase & after retinal laser photocoagulation)
- Toxoplasmosis: retinochoroiditis
- Age-related macular degeneration
- 3 types of enlarged optic disc recess

 **KYOTO KAGAKU**

### SKILLS

- Correct use with all types of direct ophthalmoscope (not supplied)
  - Right eye to right eye
  - Adjustment of focus (3 steps)
  - Visualisation of fundus reflection
- Differentiation of pathologies
- Communication skills

### Digital Eye Examination Simulator

KKMW61

KKMW61M

KKMW61D



#### KEY FEATURES

- 40 pre-installed authentic fundus cases
- Custom fundus images can be programmed via USB
- Adjustable dilation 2 steps (3.5mm, 5.0mm)
- Soft & supple material making for realistic eyelid raising
- Monitor is 160dpi high resolution

#### DIGITAL EYE EXAMINATOR SIMULATOR - ENHANCED 40 CASES

- Includes all 10 fundus cases found with Eye Exam Simulator (KKM82)
- Normal eye-ground with enlarged optic disc recess with drusen type 2
- Optic disc haemorrhage
- Haemorrhage
- Chorioretinal atrophy types 1, 2 & 3
- 4 types of vitreous clouding
- 2 types of retinal nerve fibre layer defect
- Pigmentation
- Haemorrhage with vascular white sheath
- Photocoagulation spots
- 3 types of epiretinal membrane
- Customised fundus cases can be programmed into the simulator via a USB



## Ear Examination Simulator II

KKMW12

KKMW12M

KKMW12D



### QUALITIES

#### ANATOMY

- Head, neck & shoulders
- Anatomically correct soft ear model with external acoustic meatus & tympanic membrane

#### REALISM

- Ear model allows training in straightening the auditory canal by pulling the auricle
- The neck can be tilted to allow proper head positioning

#### KEY FEATURES

- Warning against painful insertion, with or without beep
- 9 major clinical cases are prepared:
  - Normal
  - Serous otitis media (SOM)
  - Mucoïd otitis media (MOM)
  - Chronic otitis media with perforation
  - Acute suppurative otitis media (AOM)
  - Cholesteatoma
  - Tympanosclerosis
  - Traumatic perforations
  - Cerumen block
- Foreign body removal set supplied. Includes simulated earwax, small toys & small sponge fragments

#### VERSATILITY

- Examination possible on both left & right ears
- Suitable for use with all otoscopes
- 4 matching sets of right & left ears
- 2 sizes of ear canal for all cases
- Cases can be switched over easily by using the dial on the back of the mode

#### SAFETY

- Latex free

## KYOTO KAGAKU

A life-size model of the ear including external acoustic meatus and tympanic membrane, for training in examination of the ear with an otoscope and foreign body removal.

The model offers two modes of use:

- Instructor mode: particularly useful for OSCE or skills examination scenarios, allowing instructors to guide and evaluate students' proficiency in ear examination techniques and ability to identify different pathologies.
- Self-learning mode: enables and empowers independent learners to practice and refine their skills at their own pace.

The model warns against painful insertion into the ear by beeping and/or displaying a warning light to the assessor.

A yellow light indicates when the tip of the otoscope reaches the bony part of the ear canal, and a red light indicates when it touches the eardrum.

### SKILLS

- Ear examination with an authentic otoscope of your choice (not supplied)
- Diagnosis of up to 9 cases
- Earwax and foreign body removal



- Examination of the ear with an otoscope
- Head can be tilted to allow for proper positioning
- Foreign body removal can be practised
- Red light comes on when otoscope touches eardrum

### WHAT'S INCLUDED

#### Manikin Head & Shoulders

#### 4 Pairs of Ear Units:

- Examination Ear (Normal)
- Examination Ear (Stenosis)
- Foreign Body Ear (Normal)
- Foreign Body Ear (Stenosis)

#### Foreign Body Removal Kit

#### Carry Case

# CATHETERISATION TRAINER RANGE



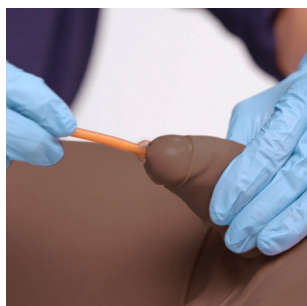
The Catheterisation Range facilitates the teaching of urethral and suprapubic catheterisation across all levels of training.

Interchangeable modules allow practice of the fundamental procedures of male and female urethral catheterisation, as well as more advance skills of

suprapubic management and ultrasound guided insertion.

The anatomically accurate trainers include a supple urethra and resistant sphincter providing a closer to life training experience.

## Male Catheterisation Trainer



60850

60870

The male trainer has soft and lifelike genitalia to enhance the realistic experience of catheter insertion.

Retractable and removable foreskin.

This model includes Augmented Reality



## Female Catheterisation Trainer

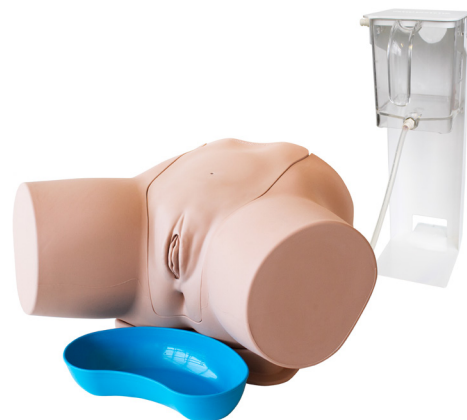


60851

60869

The female trainer has soft labia allowing trainees to practice parting using the aseptic non-touch technique, as well as suprapubic catheter management and care via the pre-ported bung.

This model includes Augmented Reality



## Suprapubic Insertion Unit



60852

60873

Optional module, designed for advanced skills training, allowing trainees to master ultrasound guided suprapubic catheterisation insertion.

Fits into the pelvic shell and stand.





## SKILLS

- Correct handling of male & female anatomy
- Aseptic catheterisation technique
- Withdrawal of catheter
- Urinary catheterisation
- Suprapubic catheter management - female module
- Suprapubic catheter insertion (blind & ultrasound-guided)\*
- Ultrasound bladder scanning on a full bladder\*
- Fluid management



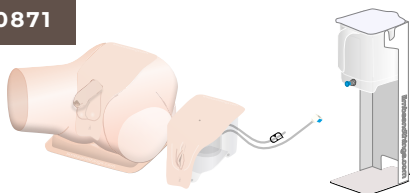
**INCLUDES  
AUGMENTED REALITY**  
Discover the benefits on page 6

- No ongoing costs and unlimited users
- Bridge the learning gap between theory and practice
- Interact with internal anatomy to build understanding
- Visualise the catheter pathway
- Multiple students learning at once
- Materials to learn with outside of the classroom

## Standard Catheterisation Trainer Set

60853

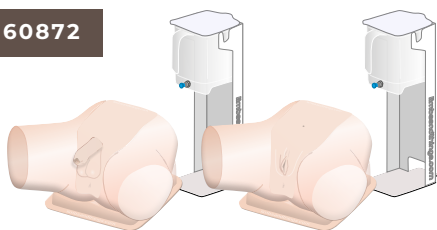
60871



## Advanced Catheterisation Trainer Set

60854

60872



## QUALITIES

### REALISM

- Supple urethra & resistant sphincter providing realistic response
- Flaccid penis & removable foreskin
- Vaginal opening & realistic urethral meatus
- Anatomically accurate bladder

### KEY FEATURES

- Ability to assess the student's progress
- Ultrasound compatible\*
- Easy to set up
- Modular
- Visualise internal anatomy with Augmented Reality

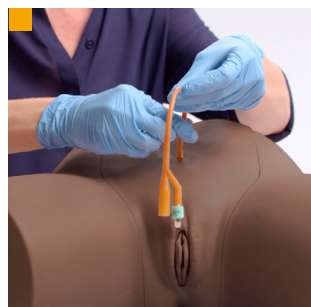
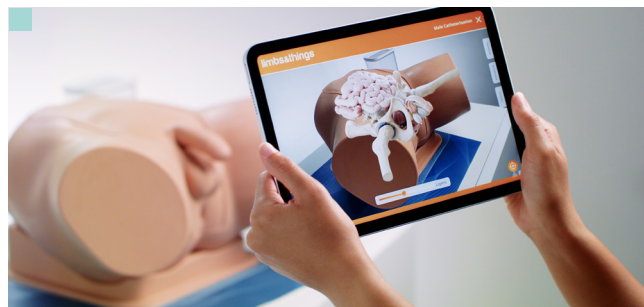
### VERSATILITY

- Easily interchangeable male, female & suprapubic catheterisation modules

### SAFETY

- Trainer is latex free (catheters provided contain latex)

\* 60852 | 60873 Only



Compatible with Augmented Reality

Ability to view catheter path when module used without pelvic shell

Suprapubic management

## WHAT'S INCLUDED

	MALE	FEMALE	SUPRAPUBIC (ULTRASOUND)	STANDARD	ADVANCED
Male Catheterisation Module	✓	×	×	✓	✓
Female Catheterisation Module	×	✓	×	✓	✓
Suprapubic (Ultrasound) Catheterisation Module	×	×	✓	×	×
Suprapubic Insertion Bungs (x2)	×	×	✓	×	×
Catheterisation Foreskins (x3)	✓	×	×	✓	✓
Aseptic Catheterisation Sleeves (x2)	✓	✓	×	✓	✓(x2)
Water System	✓	✓	✓	✓	✓(x2)
Pelvic Shell & Stand	✓	✓	×	✓	✓(x2)
Water Extension Tubing	✓	✓	×	✓	✓(x2)
Limbs & Things Lubricant	✓	✓	×	✓	✓(x2)
Antifungal Agent (Milton Sterilising Fluid)	✓	✓	✓	✓	✓(x2)
14 French Foley Catheter	✓	✓	×	✓	✓(x2)
Plastic Kidney Dish	✓	✓	×	✓	✓(x2)
Augmented Reality Mat	✓	✓	×	✓	✓(x2)

## LUMBAR PUNCTURE &amp; EPIDURAL RANGE



This range offers realistic, repeatable and cost effective training in the core skills of lumbar puncture and epidural anaesthesia for both palpation and ultrasound guided techniques.

All three models share a common base but offer different levels of complexity to support trainees from early through to advanced learning.

Designed in conjunction with clinicians, the models feature realistic feel and response while offering a safe environment for learning and skill maintenance.

## Lumbar Puncture Model

61000

61023

This model is designed for early years training. It features replaceable tissue inserts, durable spine and dura that accurately recreate the feel of puncturing the dura and the collection and measurement of CSF.

Its separate spine and replaceable tissue means the model is a cost effective way to train large numbers of students.



## Advanced Epidural &amp; Lumbar Puncture Model

61001

61024

The Advanced model allows training in both lumbar puncture and epidural administration. Featuring two different epidural inserts: standard and an advanced version with steeper spine, the model is ideal for both early and advanced training for more complex procedures.

This model also features optional fat pads to fit below the skin to increase realism and difficulty for trainees.



## Ultrasound Epidural &amp; Lumbar Puncture Model

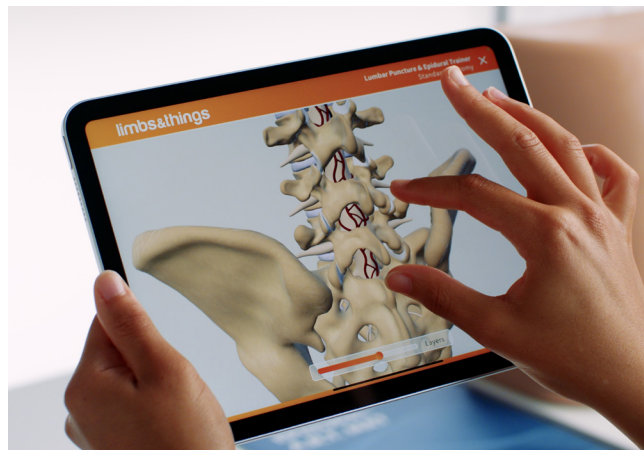
61002

61025

Ideal for those wishing to teach lumbar puncture or epidurals using the ultrasound guided technique.

Tested to work with all major ultrasound brands, this model includes visible facet joints.





## QUALITIES

### ANATOMY

- Palpable sacrum, iliac crests & vertebrae L2-5

### REALISM

- Can feel when the dura has been punctured
- Able to practise loss of resistance technique\*\*
- Obese skin options\*
- Optional steeper spine & smaller vertebral spaces\*

### VERSATILITY

- All inserts compatible with common base
- Rotatable skin and dura to ensure cost effective training
- Position in left lateral and sitting

\* 61001 | 61024 Only

\*\* 61001 | 61024 | 61002 | 61025 Only



### INCLUDES AUGMENTED REALITY

Discover the benefits on page 6

- No ongoing costs and unlimited users
- Bridge the learning gap between theory and practice
- Interact with internal anatomy to build understanding
- Visualise the path of epidural & lumbar puncture procedures
- Multiple students learning at once
- Materials to learn with outside of the classroom

## SKILLS

- Injection of local anaesthetics
- Lumbar puncture
- Collect & measure CSF
- Epidural administration
- Ultrasound-guided technique
- Obese option

### LUMBAR PUNCTURE MODEL

✓  
✓  
✓  
x  
x  
x

### ADVANCED EPIDURAL & LUMBAR PUNCTURE

✓  
✓  
✓  
✓  
x  
✓

### ULTRASOUND EPIDURAL & LUMBAR PUNCTURE

✓  
✓  
✓  
✓  
✓  
x

## WHAT'S INCLUDED

### LUMBAR PUNCTURE MODEL

### ADVANCED EPIDURAL & LUMBAR PUNCTURE

### ULTRASOUND EPIDURAL & LUMBAR PUNCTURE

- Epidural & Lumbar Puncture Torso with Torso Skin
- Epidural & Lumbar Puncture Stand
- Lumbar Puncture Insert - Bone
- Lumbar Puncture Insert - Tissue (x2)
- Epidural Insert (x2)
- Advanced Epidural Insert (x2)
- Epidural & Lumbar Puncture Ultrasound Insert (x2)
- Epidural & Lumbar Puncture Skin Pad
- Epidural & Lumbar Puncture Fat Pad (x3)
- Epidural & Lumbar Puncture Standard Dura (x2)
- Epidural & Lumbar Puncture Advanced Dura (x4)
- Epidural & Lumbar Puncture Iliac Crest Insert
- Epidural & Lumbar Puncture Insert Cartridge
- Epidural & Lumbar Puncture Sacral Insert
- Water Reservoir
- Marker Pen
- Augmented Reality Mat

✓  
✓  
✓  
✓  
x  
x  
x  
✓  
x  
✓  
x  
✓  
✓  
✓  
✓  
✓  
x  
x  
✓

✓  
✓  
✓  
✓  
✓  
✓  
x  
✓  
✓  
✓  
✓  
✓  
✓  
✓  
✓  
✓  
x  
x  
✓

✓  
✓  
x  
x  
x  
x  
✓  
x  
x  
✓  
✓  
✓  
✓  
✓  
x  
✓  
✓  
✓  
✓



# Chest Drain & Needle Decompression Trainer



60230

61230

Our Chest Drain & Needle Decompression Trainer has been designed to meet the specific requirements of healthcare professionals training in surgical or guidewire assisted thoracostomy and thoracentesis, chest drainage and needle decompression techniques. Chest tube insertion is possible on both types of pad, with the Advance model allowing practice of Seldinger's ultrasound technique.



## QUALITIES

### ANATOMY

- Representation of adult male thorax with arms raised
- Bony & soft tissue landmarks: manubriosternal joint, clavicles, ribs, pectoralis major & latissimus dorsi
- Internal ultrasound anatomy: diaphragmatic structures and collapsed lung

### REALISM

- Can give the impression of breathing under ultrasound when using the advanced pad
- Needle decompression on the midclavicular lines, produces a realistic "hiss" of air releasing. A saline filled syringe can also be used to observe bubbles of gas releasing from the chest cavity
- Simulates movement within the liquid of the chest cavity when using ultrasound-guided procedures
- Standard pads offer a realistic "pop" on insertion of finger or forceps into the pleural space

### KEY FEATURES

- Reservoirs can be filled with fluid or mock blood to represent pleural effusion
- Bilateral chest drain & needle decompression pads

### VERSATILITY

- Suitable for supine, sitting or leaning forwards positions
- Compatible with thoracic seals when using the standard pad
- Affordable replaceable pads

### SAFETY

- Latex free



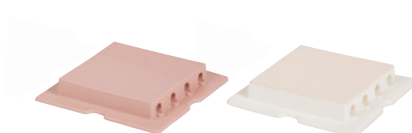
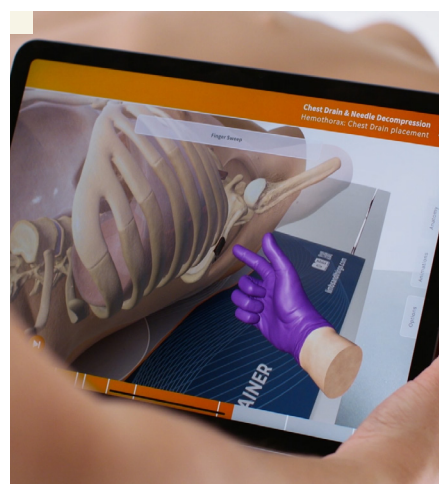
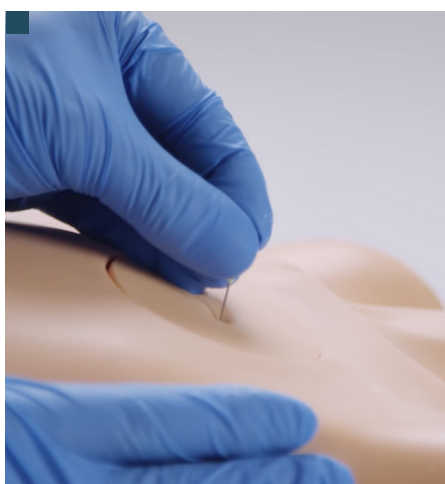
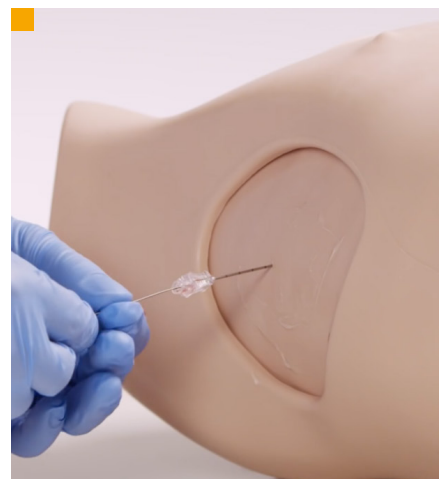
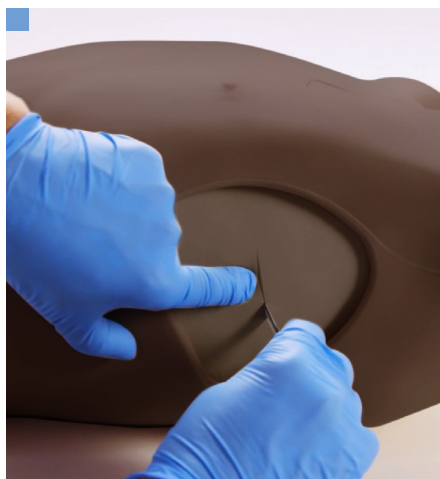
### INCLUDES AUGMENTED REALITY

Discover the benefits on page 6

- No ongoing costs and unlimited users
- Bridge the learning gap between theory and practice
- Interact with internal anatomy to build understanding
- Visualise chest drain & needle decompression procedures
- Multiple students learning at once
- Materials to learn with outside of the classroom

## SKILLS

- Needle decompression of a tension pneumothorax (at both the 2nd & 5th intercostal space)
- Open or cut-down chest drain insertion: recognition of correct position, surgical incision, blunt dissection through chest wall, perforation of pleura & finger sweep
- Application of adhesive dressings and/or suturing of chest tube
- Ultrasound-guided chest drain insertion (Seldinger technique): including insertion of needle under direct vision & ultrasonic recognition of chest structures
- Management of pleural effusion
- Increased understanding of internal anatomy & procedures with augmented reality



- Blunt dissection
- Chest tube insertion
- Seldinger technique
- Internal anatomy visible under ultrasound
- Realistic needle decompression
- Augmented Reality (AR)

## PAD FEATURE COMPARISON

ADVANCED      STANDARD

60232

60234

61232

61233

- Ultrasoundable
- Use with liquids
- Effusion
- Haemothorax simulation
- Pleural layer
- Blunt dissection
- Seldinger technique
- Can be sutured
- Needle insertion
- Guidewire insertion
- Dilator insertion
- Drain tube insertion
- Use with adhesive dressings
- Shows respiratory swing
- Latex free

✓  
✓  
✓  
✓  
✓  
✓  
✓  
✓  
✓  
✓  
✓  
✓  
✓  
✓  
✓  
✓

×  
×  
×  
×  
✓  
×  
✓  
✓  
✓  
✓  
✓  
✓  
✓  
×  
✓

## WHAT'S INCLUDED

60230

61230

- Needle Decompression Pads (x2)
- Advanced Chest Drain Pads (x2)
- Standard Chest Drain Pads (x2)
- Chest Drain Rib Frame (Left)
- Chest Drain Rib Frame (Right)
- Chest Drain Lungs (x2)
- Chest Drain Diaphragms (x2)
- Chest Drain Ribs (x12)
- Chest Drain Pump: Respiratory Swing
- Chest Drain Pump: Needle Decompression
- Chest Drain Slotted Retaining Knobs
- Key with Keyring
- Torso
- Carry Case
- Augmented Reality Mat

## TruMan Trauma Adult

TCTTA0001

TCTTA0001DS

Able to simulate a range of emergency procedures, this model is ideal for training in airway management skills for trauma situations including needle decompression, tracheostomies and chest tube insertion.

### KEY FEATURES

- Supports bilateral chest tube insertion
- Full chest needle decompression
- Practice CPR
- Anatomically accurate oral & nasopharyngeal airway
- Ability to simulate difficult airway scenarios including tongue oedema
- Realistic look & feel of tissues representing skin, fat & muscle
- Accurate representation of rise & fall during ventilation



## Smart TruMan Trauma Adult



TCTTAP001

TCTTAP001DS

Smart TruMan Trauma is able to provide real-time patient monitoring, feedback on CPR performance and with the ability to simulate a patient with advanced airway management needs, the model immerses learners into emergency scenarios.

### KEY FEATURES

- Offers real-time CPR feedback and performance tracking
- Assessment tools including ECG, defib support, x-ray images & ultrasound views
- Supports bilateral chest tube insertion with ultrasound
- Full chest needle decompression
- Anatomically accurate oral & nasopharyngeal airway with the ability to change difficulty
- Supports pelvic binding
- Stomach distension identification
- Accurate look & feel of tissues
- Rise & fall of chest during successful ventilation



### COMPARE MODELS

#### TRUMAN TRAUMA ADULT

#### SMART TRUMAN TRAUMA ADULT

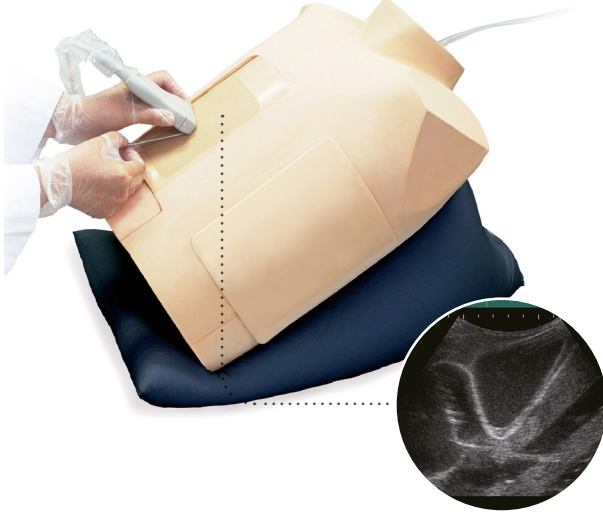
Chest Drain	✓	✓
Needle Decompression	✓	✓
Airway Management	✓	✓
Cardiopulmonary Resuscitation (CPR)	✓	✓
- Realtime CPR Feedback	×	✓
Pelvic Binding	✓	✓
Stomach Distension Identification	✓	✓
Vital Signs Monitoring	×	✓
Scenario-Based Assessment	×	✓
Ultrasound & Chest X-Ray Simulation	×	✓



## Ultrasound Guided Pericardiocentesis Simulator

KKMW15

KYOTO KAGAKU



This simulator allows trainees to practise pericardiocentesis: inserting the needle under ultrasound guidance, piercing the pericardial sac and aspirating pericardial fluid.

### SKILLS

- Ultrasound guided pericardiocentesis using subxiphoid or parasternal approach
- Patient positioning
- Visualisation of pericardial fluid under ultrasound
- Palpation & identification of left xiphisternal junction (Larrey's point) for needle insertion
- Insertion of needle only in pericardial space
- Aspiration of pericardial effusion

### QUALITIES

#### ANATOMY

- Adult upper torso
- Left xiphisternal junction (Larrey's point)

#### REALISM

- Realistic haptic response for pericardial sac needle tip puncture

#### KEY FEATURES

- Confirmation of ventricles, ribs, pericardium, liver & main artery under ultrasound scanning
- Durable & replaceable puncture pad

### WHAT'S INCLUDED

Adult chest model with spacer  
Puncture pad for pericardiocentesis  
Pillow for positioning  
Instruction manual  
Syringe

### CONSUMABLES

**KK11394-010** Puncture Pad for Guided Pericardiocentesis Simulator (x2)

## Ultrasound Guided Thoracentesis Simulator - Full Set

KKMW4

KYOTO KAGAKU



The Ultrasound Guided Thoracentesis Simulator facilitates training for puncture and injection training under ultrasound guidance.

The two puncture units, mid-scapular line access and mid-axillary line access, both include the ribs, soft tissue, pleura, lung and diaphragm. The ribs can be palpated from the surface to determine site for needle insertion. Volume of fluids can be controlled.

### SKILLS

- Recognition of landmarks by ultrasound
- Palpating the ribs
- Puncture and injection training

### QUALITIES

#### ANATOMY

- Anatomical parts include:
  - Ribs
  - Pleura
  - Soft tissue
  - Diaphragm
- Mid-axillary line: 6th-9th ribs
- Mid-scapular line: 8th-11th ribs

#### OVERVIEW

- Excellent ultrasound image
- Ribs can be palpated
- Strap-on puncture unit to learn patient positioning & professional-to-patient communication

#### VERSATILITY

- 2 sites for access: right mid-scapular line & left mid-axillary line
- Volume of pleural effusion can be controlled to set different levels of challenges
- Provides ultrasound images for appropriate locations to practice the subxiphoid approach & the parasternal approach

## TruJunctional



Practice critical lower-body trauma scenarios with TruJunctional. Replicating complex traumatic injuries (gun shots and stab wounds) to build trainee confidence in high-pressure emergency scenarios. Instructors can also simulate unsuccessful haemorrhage control, forcing learners to make decisions under pressure.

### SKILLS

- Wound identification
- Wound packing & management
- Pelvic binding
- Junctional & CAT tourniquet placement
- Decision making: option for instructors to choose which interventions will stop the bleeding

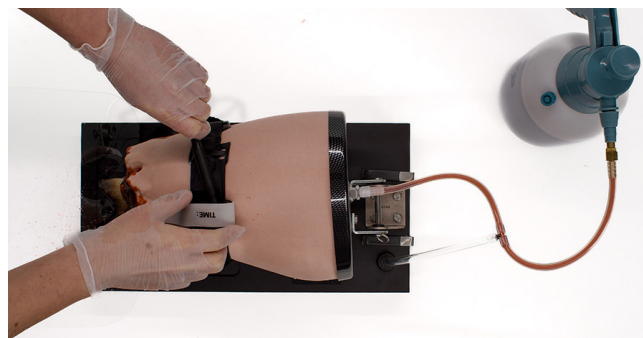
## TruTourniquet



The TruTourniquet simulator allows medical professionals to realistically practice controlling massive lower extremity haemorrhages. It helps refine skills in wound management and tourniquet application for severe bleeding in trauma cases, providing visual feedback for correct pressure.

### SKILLS

- Combat application
- Tourniquet application
- Techniques for applying various types of tourniquets
- Communication skills



## TruWound



The TruWound simulator offers medical professionals a realistic way to train in wound packing techniques required for the care of severe bleeding in trauma patients. Representing a large bullet wound to the upper thigh, the trainer provides instant visual feedback through bloodflow when wound packing techniques are correctly applied.

TruWound delivers versatile training as the trainer has been tested to withstand over 1,500 procedures and comes with 3 wounds for simultaneous practice for multiple learners.



### SKILLS

- Wound packing procedures
- Techniques using haemostatic pads
- Communication skills



# Clean Bleed<sup>®</sup> Mat

70400



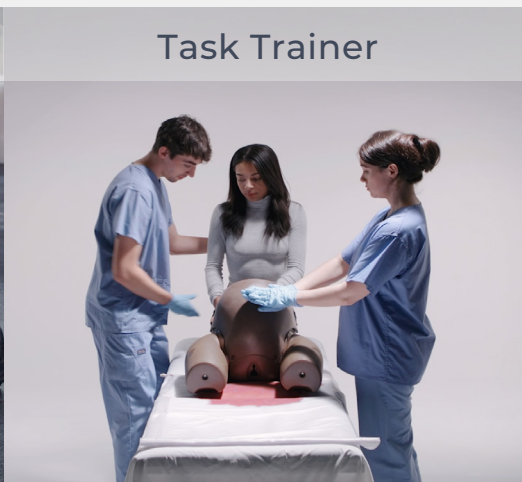
Designed to support any simulation scenario where external blood or fluid loss is a key indicator of a patient's condition such as gunshot wounds, postpartum haemorrhage or post-operative bleeds.

## Support different scenarios

Simulated Patient



Task Trainer



Full Body Manikin



## KEY FEATURES & BENEFITS

- No mess bleed is contained in a sealed mat
- Easy set up and cleaning
- Controllable blood flow
- Reusable blood & pads for multiple uses & cost-saving
- Portable
- For use indoors & outdoors
- Suitable for use with simulated patients, task trainers & full body manikins
- Simulate a range of fluids

## SKILLS

- Identify fluid loss
- Assess the speed & colour of the fluid loss
- Practice Quantitative Blood Loss (QBL)
- Monitoring of patient condition
- Intervention decision making
- Determine success of interventions

[Click here to find out more](#)





## Smart Airway Adult

TCSAA10001

TCSAA10001DS

Smart Airway Adult provides personalised feedback and assessment to support learners' development of correct technique.

Designed for effective training, users can learn independently with live feedback. Performance statistics and a video of the practice are recorded to allow instructors to debrief learners post-training, supporting efficient workflow. Assessment Mode allows instructors to receive quantitative results and can add feedback, ensuring learning progress is on track.

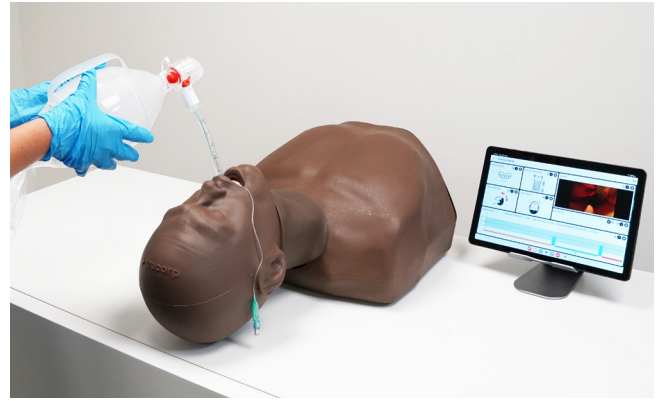
### QUALITIES

#### REALISM

- Adult airway simulation trainer with performance feedback of key metrics
- Supports independent learning with customisable content
- Independent or instructor-led assessment modes

#### KEY FEATURES

- Realistic adult male torso with visible chest rise & fall
- Uses CT DICOM data for anatomically correct internal features & accurate landmarks



### SKILLS

- Needle cricothyroidotomy
- Surgical cricothyroidotomy
- Percutaneous tracheostomy
- Double nasotracheal intubation
- (BVM) Bag valve mask ventilation techniques
- Full range of supraglottic device insertion
- Direct laryngoscopy
- Video laryngoscopy
- Sellick manoeuvre
- Awake fibre optic examination
- Endotracheal tube insertion
- Combi tube insertion

## Smart Airway Child

TCSAC10002

TCSAC10002DS

Enhance your paediatric airway training with Smart Airway Child. Using quantitative and qualitative feedback to guide improvements in airway management technique, the trainer is the ideal tool for independent accurate skill training. Using the instructor or self-led assessment modes provide a basis to track progress.

### SKILLS

- Needle cricothyroidotomy
- Surgical cricothyroidotomy
- Percutaneous tracheostomy
- Double nasotracheal intubation
- (BVM) Bag valve mask ventilation techniques
- Full range of supraglottic device insertion
- Direct laryngoscopy
- Video laryngoscopy
- Sellick manoeuvre
- Awake fibre optic examination
- Endotracheal tube insertion
- Combi tube insertion



### QUALITIES

#### REALISM

- Realistic child torso with visible chest rise & fall
- Uses CT DICOM data of a 6-year-old child for anatomically correct internal features & accurate landmarks

#### KEY FEATURES

- Child airway trainer with feedback of key performance metrics
- Supports independent learning with customisable content
- Independent or instructor-led assessment modes

## AirSim Combo X



The TruCorp AirSim Combo X combines intubation and cricothyrotomy training in one life-like model. The trainer fully supports needle and surgical cricothyroidotomy, and percutaneous tracheostomies. The palpable laryngeal inserts, an inflatable tongue, and improved, real-feel skin, give trainees realistic feedback during procedures.

## Airsim Combo Bronchi X



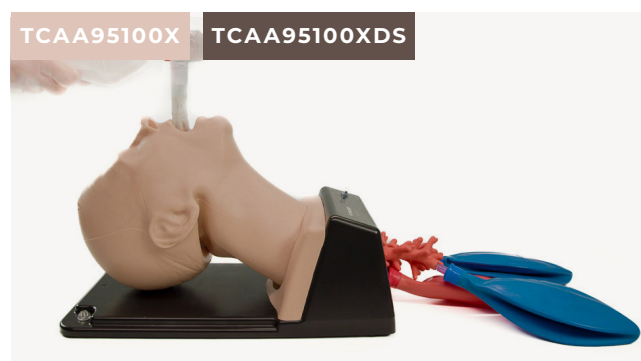
With the addition of the 4th generation bronchi, trainees are able to perform diagnostic bronchoscopies, use bronchial barrier devices to perform lung isolation, and practise suction pulmonary secretions alongside front of neck access.

## AirSim Advance X



AirSim Advance X features the uniquely constructed AirSim X airway and an anatomically correct nasal passage for visual accuracy and realistic feedback during airway management procedure practise.

## Airsim Advance Bronchi X



With the additional bronchioles, users can train in bronchoscopy, lung suction and lung isolation techniques including, bronchial blocker insertion, single & double endobronchial tubes, and specialised stents.

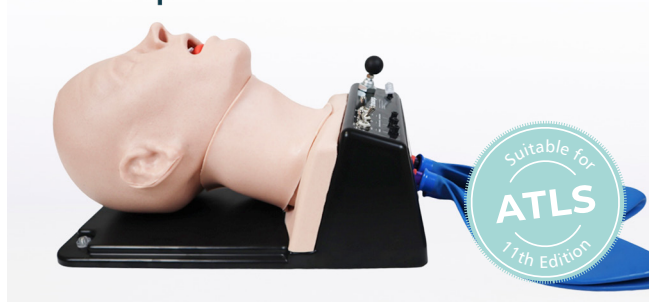
### COMPARE MODELS

	AIRSIM ADVANCE X	AIRSIM ADVANCE BRONCHI X	AIRSIM COMBO X	AIRSIM COMBO BRONCHI X
Oral / nasal intubation	✓	✓	✓	✓
Bag Valve Mask ventilation (BVM)	✓	✓	✓	✓
Supraglottic device insertion	✓	✓	✓	✓
Direct / video laryngoscopy	✓	✓	✓	✓
Bronchoscopy	×	✓	×	✓
Needle cricothyroidotomy	×	×	✓	✓
Surgical cricothyroidotomy	×	×	✓	✓
Percutaneous tracheostomy	×	×	✓	✓
Nasogastric tube insertion	✓	✓	✓	✓

## AirSim Difficult Airway

TCDA91100

TCDA91100DS

The AirSim Difficult Airway supports trainees' practice in a range of scenarios from scenarios from slight to extreme difficulty, facilitating training for those looking to advance in airway management.

An innovative design allows the tongue, larynx, jaw, head rotation and vocal chords to be uniquely adjusted to create different conditions.

### SKILLS

- Laryngospasm
  - Adjustable from normal to complete airway obstruction
  - Sudden closure of the vocal cords can be simulated
  - Upon successful user action, laryngospasm can be mechanically reversed to provide positive feedback
- Displaced larynx
  - Ability to displace the larynx into a more anterior position to make visualisation of the vocal cords more challenging
  - Adjustable to provide various levels of difficulty
- Tongue edema
  - The tongue can be swollen to simulate various degrees of tongue angioedema
- Receding / protruding mandible
  - Various degrees of malocclusion, one mandibular variant & two maxillary variants
  - Overbite & underbite features simulated
- Trismus
  - Ability to grossly restrict mouth opening to make insertion of airway devices more challenging
- Neck lock / head rotation restriction
  - Ability to simulate cervical arthropathy through restricting the range of motion of cervical spine neck lock / head rotation restriction

## AirSim Child Combo X

TCCC10006X

TCCC10006XDS




Ideal for practising emergency cricothyroidotomy, oral and nasal intubation training techniques, and percutaneous tracheostomy on a 6-year-old child.

### WHAT'S INCLUDED

AirSim Child Combo X	Child Lung Bag Set
USB User Manual	Spare Larynx Inserts (x4)
Bottle of TruCorp Lubrication (100ml)	Carry Case

### SKILLS

- Double nasotracheal intubation
- Needle & surgical cricothyroidotomy
- Percutaneous tracheostomy
- Oral and nasal intubation
- Laryngeal mask airway & supraglottic device insertion
- Combi tube insertion
- Awake fibre optic intubation
- Video laryngoscopy
- Bag & mask ventilation techniques

### QUALITIES

#### REALISM

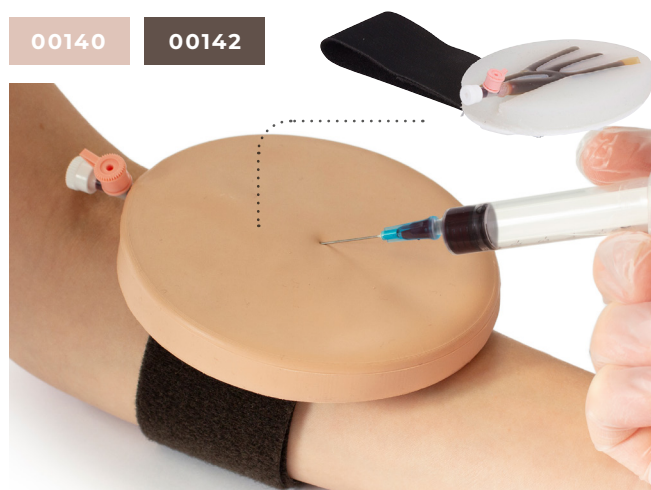
- A realistic larynx which features palpable cricoid landmarks, laryngeal cartilages & tracheal rings

#### KEY FEATURES

- A tongue which can be inflated to create tongue oedema providing a variance during training
- User feedback through the visualisation of stomach inflation & lung expansion



## ACF Pad - Venepuncture



This soft tissue strap-on pad can be used to train in venepuncture and represents the antecubital fossa of the right arm.

### SKILLS

- Professional-to-patient communication
- Recognition of the vein pattern through palpation
- Insertion of a needle & cannula
- Management of blood flow

### WHAT'S INCLUDED

Vein for ACF Pad  
Epidermis for ACF Pad  
Pad Base with Strap

### QUALITIES

#### KEY FEATURES

- Ideal for professional-to-patient communication & scenario-based training using a simulated patient
- Straps onto the antecubital fossa of the arm
- Veins are: self-sealing for repeated use, rechargeable via a one-way valve, supplied with mock blood under pressure and replaceable

#### VERSATILITY

- Only use Mock Blood - Venous (250ml) (**00223**) to refill these veins
- Compatible with Mock Blood Giving Set (**60651**)

#### SAFETY

- Tough backing plate to prevent needlestick injuries
- Veins contain latex

#### CLEANING & CARE

- Replaceable epidermis
- Washable using soap & water

## Three Vein Pad - Venepuncture



This soft tissue strap-on pad features 3 straight veins, one of which is paediatric size.

### SKILLS

- Professional-to-patient communication
- Insertion of a needle
- Insertion of cannula
- Management of blood flow

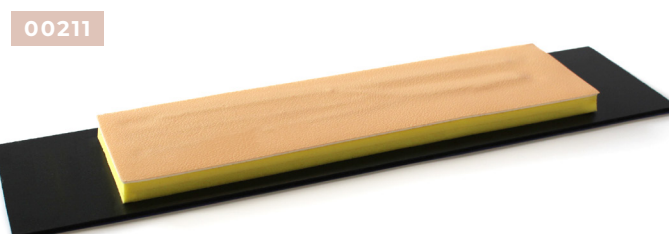
### WHAT'S INCLUDED

Vein for 3 Vein Pad  
Epidermis for 3 Vein Pad  
Pad Base with Strap

## Extended ACF Pad - Venepuncture

This soft tissue pad is supplied on a base for bench top training in venepuncture and insertion of cannulas. It represents the antecubital fossa of the right arm.

Improved, unidirectional skin texture.



## TruCVC

TCTCVC100

TCTCVC100DS



TruCVC is the latest addition to TruCorp's ultrasound-guided task trainers, specifically designed to aid in central venous catheter (CVC) insertion. With realistic and accurate vascular anatomy, TruCVC offers unmatched realism to aid in developing central line skills.

### SKILLS

- Correct needle positioning
- Central venous catheter placement
- Wire manipulation
- Cannulation techniques
- Trendelenburg positioning
- Fluid injection
- Blood withdrawal
- Seldinger techniques
- Ultrasound techniques



### QUALITIES

#### ANATOMY

Clinical Anatomy:

- Upper torso & neck, adult male
- Right clavicle
- Manubrium
- First right rib
- Sternocleidomastoid muscle

Vascular Anatomy:

- Internal jugular vein
- Subclavian vein
- Carotid artery
- Subclavian artery

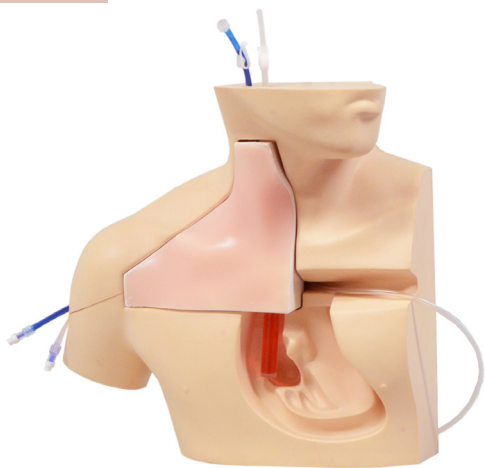
#### REALISM

- Realistic vascular anatomy
- Accurate head positioning
- Vascular tenting upon vascular access
- Arterial pulse simulation possible
- Simulator allows for withdrawal & administration of fluids

## Ultrasound CVC Insertion Simulator Mk 3

KKM93C

KYOTO KAGAKU



A realistic model for teaching cannula approaches and the insertion of central venous catheters into the superior vena cava, with and without ultrasound guidance.

### SKILLS

- Use of ultrasound technology
- Identification of key landmarks, including the clavicle, sternocleidomastoid muscle & the internal carotid artery
- Navigation of needle under ultrasound & recognition of correct vessels
- Subclavian, supraclavicular, axillary & internal jugular approach to catheterisation

### QUALITIES

#### ANATOMY

- Internal jugular vein & carotid artery
- Subclavian vein & artery
- Superior vena cava
- Ribs
- Clavicle
- Sternum
- Lung

#### REALISM

- Lifelike needle tip resistance
- Excellent image quality
- Palpable landmarks & carotid arterial pulsation

## TruIV Block

TCTNB110

TCTNB110DS



TruIV Block is efficient and easy to set up, giving more time for learning IV cannulation skills and ultrasound techniques

Designed to represent a variety of patient types, it contains both superficial and deep veins at a range of diameters (4-8mm). It also features fascia layers for enhanced realism.

### QUALITIES

#### ANATOMY

IV block representing IV cannulation sites:

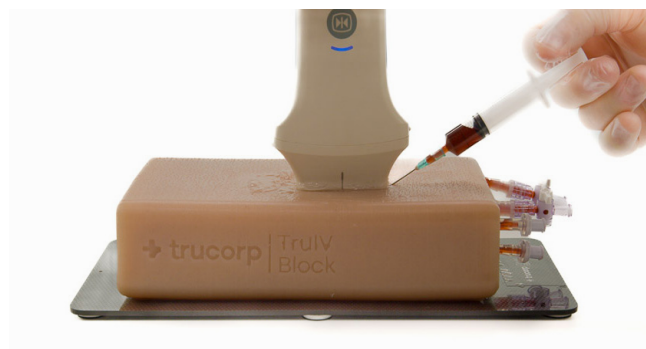
- 4 superficial veins
- 4 deep veins

#### REALISM

- 8 veins, superficial and deep
- Lifelike vascular tenting upon successful entry into a vessel
- Clear fascia layers

#### KEY FEATURES

- Longitudinal and transverse anatomical viewing options
- Supplied in a durable carry case
- Suitable for use with all ultrasound machines



### SKILLS

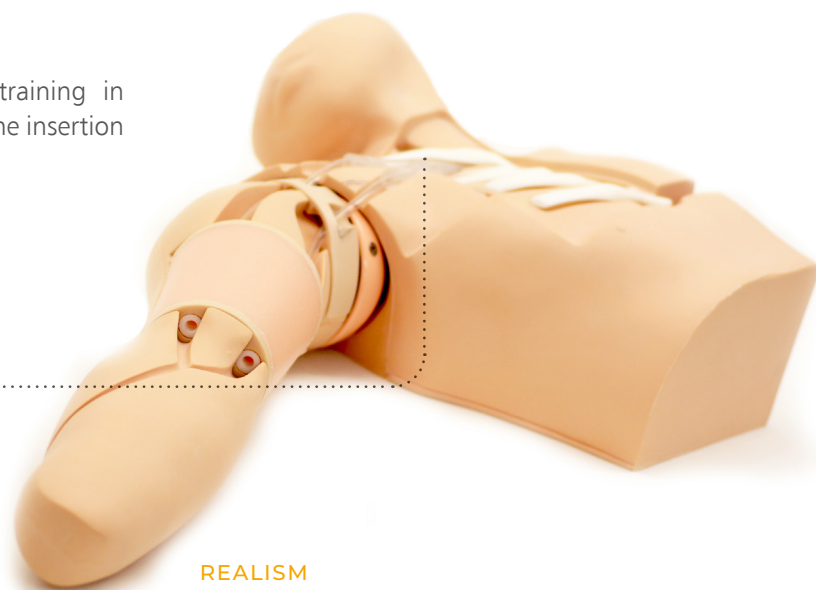
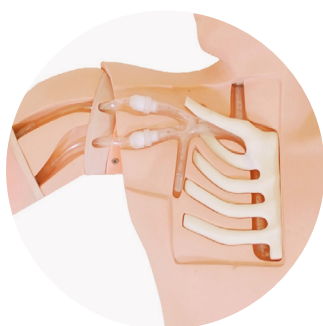
- Probe positioning and movement
- Identification of veins in soft responsive tissue
- Targeting veins for vascular access
- Ultrasound guided IV cannulation

## Ultrasound Guided PICC Training Simulator

KKMW18

KYOTO KAGAKU

A simulator for comprehensive hands-on training in Peripherally Inserted Central Catheter (PICC) line insertion and removal under ultrasound guidance.



### SKILLS

- Patient positioning
- Puncture site selection
- Ultrasound-guided venous access
- Seldinger technique
- Peel-away cannula technique
- Advancement of the cannula into the SVC

#### REALISM

- Palpable ribs & right clavicle allow measurement of catheter length as well as providing anatomical understanding of the correct PICC tip location
- Anatomically correct bifurcation of the vein in the upper chest provides realistic resistance from the outer vessel walls and allows simulation of complications such as incorrect insertion of the catheter into the jugular, thoracodorsal or subclavian vein
- Realistic flashback confirms successful venous access



# ARTERIAL PUNCTURE WRIST



Designed to support the full learning journey, this model enables trainees to build confidence in both arterial blood gas sampling and arterial line placement.

Preset pulse and pressure rate options allow for standardised and repeatable training which is ideal for classroom teaching and exam settings such as OSCEs. Use with simulated or standardised patients for added realism.

## STANDARD

72500

## ULTRASOUND

72501

## QUALITIES

### ANATOMY

- Wrist with lifelike movement
- Radial artery
- Pulse rate (40, 80, 120 BPM)
- Blood pressure (low, medium, high representation)

### REALISM

- Quiet pump for minimal distractions
- Wrist cuff to conceal visual indicators
- Representation of 9 clinical presentations
- Blood flashback
- Self-fill a syringe
- Full cannula insertion compatible with:
  - Range of over the needle 20 gauge cannulas
  - Seldinger technique
- Realistic ultrasound imagery with the ultrasound insert

### LEARNING VERSATILITY

- Classroom, skills lab, or immersive environment learning
- Ideal for exam settings
- Use with simulated patient or standalone

### MAINTENANCE

- Easy cleaning mode
- Modular vessels & injection site tissue blocks for easy and cost effective replacement
- Popper system allows for easy access to vessels for replacement and effortless skin installation

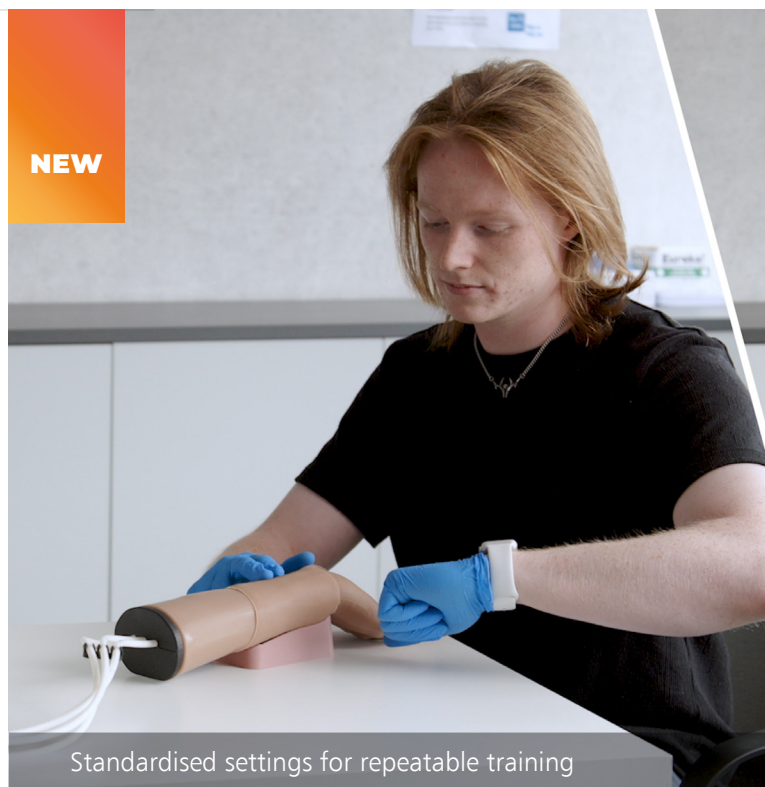
## WHAT'S INCLUDED

## STANDARD

## ULTRASOUND

Arterial Puncture Wrist	✓	✓
Arterial Puncture Wrist Stand	✓	✓
Outer Skin	✓	✓
Inner Block	✓	✓
Pump Unit	✓	✓
Arterial Puncture Vessels	✓ x10	✓ x10
Standard Block	✓ x2	✓ x2
Ultrasound Block	×	✓ x2
Skin Cuff	✓	✓
Fluid Bottle	✓	✓
Concentrated Blood	✓	✓
International Power Cable	✓	✓

NEW



Standardised settings for repeatable training



Self cleaning

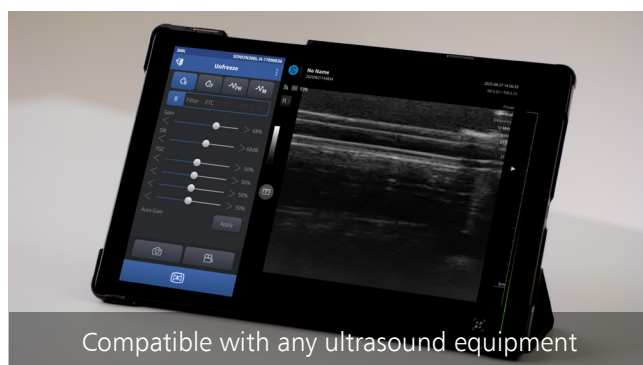
## Ultrasound Arterial Puncture Wrist

Enhance training with the Ultrasound model which includes two additional inserts to support the practice of ultrasound-guided techniques. Trainees can use their existing ultrasound equipment to locate the artery, identify access points, and build confidence interpreting ultrasound images.

### SKILLS

### STANDARD    ULTRASOUND

Wrist positioning	✓	✓
Palpation of artery	✓	✓
Assessing pulse & pressure	✓	✓
Identifying access points	✓	✓
Arterial blood gas sampling	✓	✓
Cannulation / Line placement	✓	✓
Ultrasound guided practice	×	✓



Ideal for classroom learning



Use with simulated patient



# VENEPUNCTURE ARM RANGE



The Venepuncture Arm Range provides the ideal training platform for practising the skills related to venepuncture and IV cannulation.

Suitable for undergraduate and postgraduate level training.



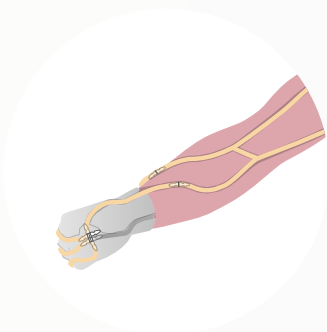
The patent pending\* skin locking mechanism ensures the model is easy to re-skin whilst maintaining the lifelike haptics of the underlying and fully palpable basilic, cephalic and dorsal metacarpal veins.

## Standard Venepuncture Arm

70302

70303

The Standard Venepuncture Arm features modular ACF and metacarpal vein anatomy connected to a gravity-fed fluid system, providing a realistic blood flow.

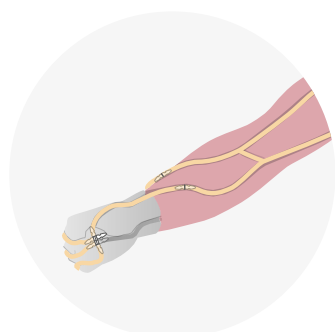


## Advanced Venepuncture Arm

70300

70301

The Advanced Venepuncture Arm features antecubital fossa (ACF) and metacarpal vein anatomy connected to a pressurised fluid system, providing a spill-proof blood supply.



\* PCT/GB2021/052719





## SKILLS

- Venepuncture
- IV cannulation
- IV infusion
- Practise of aseptic technique

- Visual inspection & palpation
- Gripping system provides true-to-life vein placement
- Ability to position the hand for life like cannula insertion

## QUALITIES

### REALISM

- Realistic blood flashback
- More realistic arm look & feel
- Gripping system provides true-to-life vein placement

### KEY FEATURES

- Realistic & palpable vein haptics promote accurate clinical use
- Easy-to-fit skin locking system (patent pending\*) increases anatomical realism
- Vein gripping feature facilitates correct vein positioning, repeatable training & an easier re-skinning process
- Enables the application of digital pressure to stem blood flow
- Infusion tube allows for IV fluids to be administered
- Can be used in conjunction with a simulated patient

### VERSATILITY

- Compatible with vacuum blood collection systems, needle & syringe & IV cannulas
- Durable skin
- Extended tubing allows for simulated patient in a classroom setting
- Veins can withstand up to 500 punctures from a 21g needle
- Arm can be upgraded through purchase of modular veins & the Advanced Pressurised Pump

### SAFETY

- Basic, standard & advanced veins contain latex
- Latex-free basic vein option available (reduced durability)

### CLEANING & CARE

- Easy to clean, service & maintain

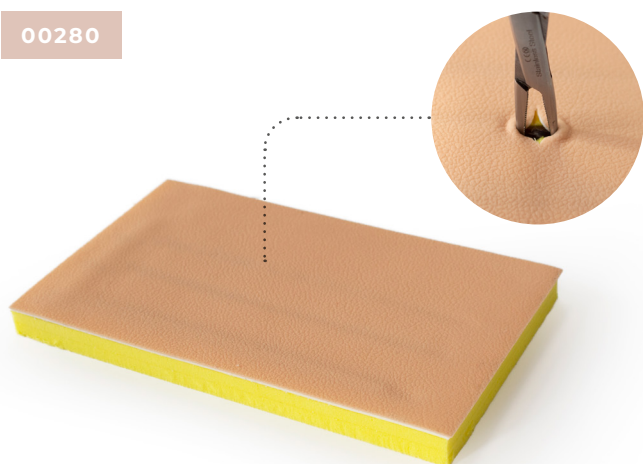
## WHAT'S INCLUDED

	STANDARD	ADVANCED
Venepuncture Arm	✓	✓
Venepuncture Arm Skin	✓	✓
Basic Venepuncture Arm Vein	x	x
ACF Vein Module	✓	✓
Metacarpal Vein Module	✓	✓
Gravity Fed Blood System	✓	x
Pressurised Blood Pump System	x	✓
Concentrated Venous Blood - Starter Pack	✓	✓
Venepuncture Arm Rest	✓	✓
Refill Bottle	x	✓
Venepuncture Arm Infusion Tube	✓	✓
Lubricant	✓	✓

VALUE PACKS	ADV PACK (MIXED) 70318	STD PACK (MIXED) 70324	ADV PACK (LIGHT) 70313	ADV PACK (DARK) 70314	STD PACK (LIGHT) 70322	STD PACK (DARK) 70323
Adv Trainer (Light)	2	x	5	x	x	x
Adv Trainer (Dark)	2	x	x	5	x	x
Std Trainer (Light)	x	2	x	x	5	x
Std Trainer (Dark)	x	2	x	x	x	5
Arm Skin (Light)	2	2	5	x	5	x
Arm Skin (Dark)	2	2	x	5	x	5
ACF Vein Modules	4	4	5	5	5	5

## Cutdown Pad

00280



A multi-layered pad containing filled veins for practising venous cutdown procedure.

## Injection Trainer

00310

00312



Our soft tissue injection pad is designed for practising intradermal, subcutaneous and intramuscular tissue injection techniques.

The Injection Trainer has multiple tissue layers representing the epidermis, dermis, adipose and muscle layer and can easily attach to an arm or thigh to help teach professional-to-patient communication.

### SKILLS

- Subcutaneous injection
- Intradermal & intramuscular injection
- Management of tissue
- Professional-to-patient communication

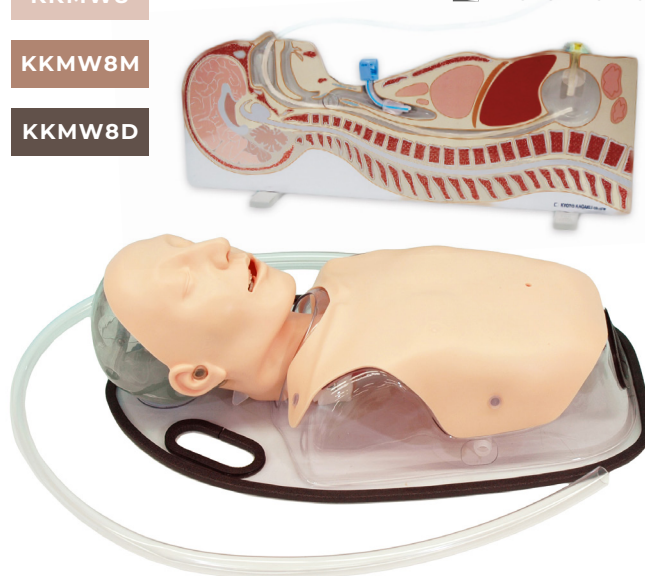
## Tube Feeding Simulator

KKMW8

KKMW8M

KKMW8D

KYOTO KAGAKU



An effective trainer for caregivers and medical professionals who work with patients receiving enteral tube nutrition. The manikin offers three routes for EN tubes and allows training with real liquid foods. The placement of the tubes can be confirmed by auscultation as well as direct observation. The model is supplied with a feeding routes panel and a chest anatomy overlay sheet to facilitate anatomical understanding.

### SKILLS

- Nasogastric (NG) & Orogastric (OG) tube insertion
- Percutaneous Endoscopic Gastrostomy (PEG)
- Gastric lavage
- Administration of liquid food

### QUALITIES

#### REALISM

- Transparent chest overlay enables direct observation of procedures
- Can be set at Fowler's position
- Flexible neck allows for appropriate neck/head positioning

#### KEY FEATURES

- Tube placement can be confirmed by fluid aspiration
- Stomach accepts up to 300cc of liquid

#### VERSATILITY

- Compact & portable

### WHAT'S INCLUDED

Male Torso & Support Base  
Drain Tube  
Funnel  
Plastic Cup

Tube Feeding Routes Panel  
Chest Sheet  
Instruction Manual  
Lubricant

# Paracentesis Trainer

60100

60111



This trainer fulfills the fundamental component of Internal Medicine Training in diagnostic and therapeutic techniques of paracentesis. Both landmark and ultrasound guided techniques can be practised.

Trainees are able to identify the echogenic anatomy, enabling them to learn how to safely insert a needle or catheter into the peritoneal cavity.

## QUALITIES

### ANATOMY

- Torso featuring bony landmarks (pubis symphysis, iliac crest) & umbilicus
- Internal anatomy includes:
  - Liver
  - Spleen
  - Bowel
  - Floating bowel

### REALISM

- Realistic tissue and needle response

### KEY FEATURES

- Palpation or ultrasound techniques can be practised (side by side)
- Internal echogenic anatomy to allow recognition of landmarks under ultrasound
- Two 3.5 litre chambers can be filled with water for practise drainage
- Cost effective consumable pads

### VERSATILITY

- Self-sealing pads, withstanding up to 200 needle or up to 100 rocket catheter insertions
- Ability to insert & remove a drain
- Positions both supine & lying on side

### SAFETY

- Latex free

### CLEANING & CARE

- Skin surface is washable using soap & water



- Trainer with skin removed, showing internal anatomy
- Catheter insertion for therapeutic drainage
- Needle insertion for diagnostic purposes
- Ultrasound guided technique

## SKILLS

- Familiarity with the abdominal regions & underlying anatomy
- Palpation of anatomical landmarks
- Identification of ascites (change excess fluid)
- Identification of safe ultrasound guided needle & catheter insertion
- Insertion of needle into peritoneal cavity for therapeutic or diagnostic purposes
- Professional-to-patient communication

## WHAT'S INCLUDED

Paracentesis Skin
Paracentesis Pads (x2)
Paracentesis Liver
Paracentesis Spleen
Paracentesis Bowel Insert (x2)
Paracentesis Floating Bowel (x2)
Paracentesis Clamping Frame (x2)
Paracentesis Large Volume Refill System
Base Unit
Carry Case



## Patient Care Simulator “Yaye”

 KYOTO KAGAKU

KKMW25



Yaye is an advanced, full-body nursing manikin designed for hands-on training in a wide range of skills required for day-to-day patient care. Suitable for teaching fundamental nursing skills to registered nursing students.



- Assessment of chest & abdomen
- Variable age, sex & personality
- IV route training
- Airway management & CPR

### SKILLS

- Body positioning/patient handling/passive exercise
- Bed bathing & change of clothes
- Airway management
- CPR
- Assessment of chest & abdomen
- Oral & denture care
- Nasogastric tube placement
- Oxygen/nasal cannula placement
- Tracheotomy care & management
- Stomach pumping
- TPN care
- PEG care
- Stoma care
- Pressure ulcer care
- Subcutaneous injection
- Intramuscular injection
- IV insertion & care
- Male & female urinary catheterisation
- Enema
- Suppository insertion
- Perineal care
- Wound dehiscence care
- Wrapping of dressings

### WHAT'S INCLUDED

Yaye Patient Care Manikin	Set of Simulated Faeces
Dentures	Lubricant (for Airway Suction etc.)
Wig (Black)	Lubricant (for Catheterisation etc.)
Face Mask (Young)	Irrigation Bag
Injection Pad (Median Vein)	Drainage Pump (Urinary Bladder)
Shoulder Injection Pads (x2)	Drainage Pump (Rectum)
Thigh Injection Pads (x2)	Drainage Hose
Hip IM Pads (x2)	Set of Pyjamas
Female Genitalia (Catheterisation)	Instruction Manual
Female Genitalia (Suppository Insertion/Digital Disimpaction)	

### QUALITIES

#### ANATOMY

- Interchangeable wigs, genitalia & masks to simulate a variety of patients

#### REALISM

- Simulating all the daily activities of patient care
- Enhanced Range of Motion (ROM) for better patient assessment & positioning

#### KEY FEATURES

- Soft & elastic abdomen allows for assessment of chest & abdomen
- Airway management & CPR

#### VERSATILITY

- Easily interchangeable male & female genitalia
- Suitable for postmortem care
- Provides training for all levels — from trainees to experienced staff

#### CLEANING & CARE

- Skin surface is washable using soap & water



Check **limbsandthings.com**  
for more information about optional consumables

# Patient Care Simulator “Cherry”

KKMW22

KYOTO KAGAKU

Cherry is a basic, full body nursing manikin for hands-on training in a wide range of skills for nursing assistants and vocational nurses.



- Oxygen nasal cannula
- Subcutaneous injection
- Wound care pad
- Male and female genitalia

## SKILLS

- Oral & denture care
- Nasogastric tube placement
- Oxygen/nasal cannula placement
- Tracheotomy care & management
- Stomach pumping
- TPN care
- PEG care
- Stoma care
- Pressure ulcer care
- Subcutaneous injection
- Intramuscular injection
- IV insertion & care
- Male & female urinary catheterisation
- Enema
- Suppository insertion
- Perineal care
- Wound dehiscence care
- Wrapping of dressings
- Subcutaneous injection

## WHAT'S INCLUDED

Female Genitalia  
Male Genitalia  
Wound Care Pad  
Cherry Patient Care Manikin  
Femoral IM Injection Pad  
Upper Arm IM Injection Pad  
Bottle  
Syringe

## QUALITIES

### ANATOMY

- Male & female genitalia

### REALISM

- Seamless arms & legs enable realistic bed & foot bathing
- Joint articulation for patient handling & passive exercise

### KEY FEATURES

- TPN and IV routes to simulate patients with catheter lines
- Pressure sores of different depths located at the scapula, greater trochanter, sacral bone & heel
- Subcutaneous & intramuscular injection pads accept liquid & can be squeezed out after use

### VERSATILITY

- Easily interchangeable male & female genitalia
- Suitable for wide range of basic care
- Removable dentures

### CLEANING & CARE

- Skin surface is washable using soap & water



Visit [limbsandthings.com](http://limbsandthings.com)  
for more information about optional consumables

## BSS Day 1 Kit

50070



## WHAT'S INCLUDED

Double Layer Bowel 30mm  
 BSS Lesion & Cyst  
 BSS Surgical Skills Board  
 BSS Tendon Repair Trainer  
 BSS Knot Tying Trainer  
 Skin Pad Jig with Skin Pad  
 BSS Soft Tissue Retaining Set  
 Haemostasis Pad

## BSS Day 2 Kit

50071



## WHAT'S INCLUDED

BSS Abscess  
 BSS Traumatic Wound with Simulated Foreign Bodies  
 BSS AOCT Pad  
 BSS AOCT Frame  
 Drain  
 8mm x 140mm Artery  
 8mm x 76mm Graft Patch

## Double Layer Bowel



50061

30mm  
 OUTSIDE DIAMETER

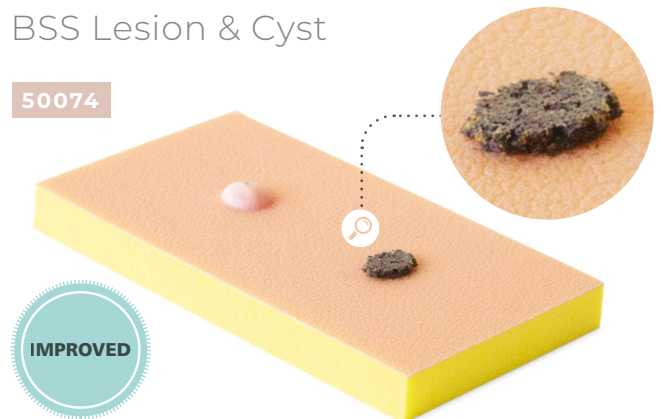
50065

20mm  
 OUTSIDE DIAMETER

Realistic 2 layer bowel simulation for training in anastomosis techniques. Both models are approximately 200mm in length.

## BSS Lesion &amp; Cyst

50074



For the practice of skin lesion removal, local anaesthesia and biopsy techniques. Cyst has a fragile epidermoid wall filled with simulated pus. This product is also available as part of the BSS Day 1 Kit (50070).

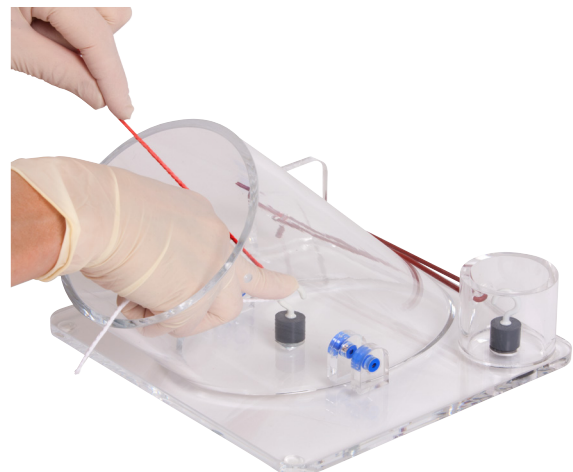
## Knot Tying Trainer

50050

A comprehensive trainer for teaching all surgical knot tying techniques, including those specified in the GB and Ireland Intercollegiate Basic Surgical Skills Course.



Developed in collaboration with Professor Jonathan Beard, Northern General Hospital, Sheffield (UK) and Mr. John Rochester, Rotherham General Hospital (UK).





# SUTURE TUTOR *PLUS*™

All you need to learn basic instrument handling, knot tying, suturing and more.

SUTURE TUTOR *PLUS*™ is a complete training package to help medical students and healthcare professionals master fundamental hands-on skills relating to instrument handling, knot tying and suturing.

The product consists of two parts which can be purchased individually, or together as a complete package.

## Online, Video-based Course



An online, video-based course that can be accessed anytime, anywhere. Developed in collaboration with Professors of Surgical Education Jonathan Beard and Roger Kneebone, the 11 module course closely follows the Intercollegiate Surgical Curriculum Programme.

- Unlimited access
- Explanatory videos use computer graphics for clarity
- Demonstration videos use clinical footage
- Practical videos use Limbs & Things products from the Hands-on Kit

## SKILLS

- Handling of instruments
- Needles & sutures
- Knot tying
- Incision of skin & subcutaneous tissue
- Suturing techniques
- Suture aftercare
- Patient management & consent
- Scrubbing, gowning & gloving
- Cleaning a wound
- Local anaesthesia
- Other methods of wound closure

## Hands-on Kit

STP-KIT

STP-KIT-DST



A Hands-on Kit including a professional skin pad, 10 sutures, basic knot tying kit and all necessary instruments to allow repeated practice of suturing techniques.

Can be purchased on its own or with the online course.



## WHAT'S INCLUDED

Single Professional Skin Pad Mk 3 - Large  
 Skin Pad Jig Mk 3  
 Basic Knot-tying Kit  
 Pack of 10 Sutures (non-sterile)  
 Scalpel  
 Dissecting Forceps  
 Scissors  
 Needle Holder

## Ingrowing Toenail Trainer

80060

80061



The Ingrowing Toenail Trainer closely simulates an adult inflamed toe end and allows for procedures such as wedge excision, ring block and total ablation of the nail bed.

Ingrown toenail removal is a common practice for both general practitioners and family medicine practitioners and is an essential skill that is required in general surgery training such as the intercollegiate surgical curriculum.



### SKILLS

- Ring block techniques
- Application of a tourniquet
- Total nail avulsion
- Phenolisation techniques
- Ablation of the nail bed
- Wedge excision - partial nail avulsion

### WHAT'S INCLUDED

Toe Jig  
Toe Ends (x3)

## Wound Closure Pad

00042

00044

00041

00043

SMALL (x12) SMALL (x12)

LARGE (x6) LARGE (x6)



A low cost, 1 layer pad, ideal for demonstrating, training and practising core skills associated with wound closure.

### SKILLS

- Making an incision
- Application of skin adhesives
- Interrupted suturing & knotting
- Stapling



### QUALITIES

#### REALISM

- Works with all major topical skin adhesives

#### KEY FEATURES

- An excellent starter pad for wound closure training
- Pad dimensions: large 145mm x 125mm, small 125mm x 72mm

#### VERSATILITY

- Use with the Skin Pad Jig Mk 3 (00550)

#### SAFETY

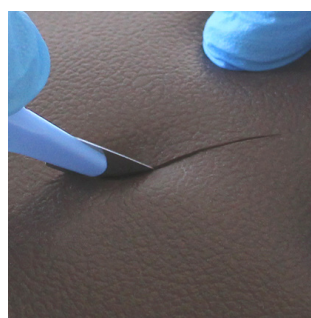
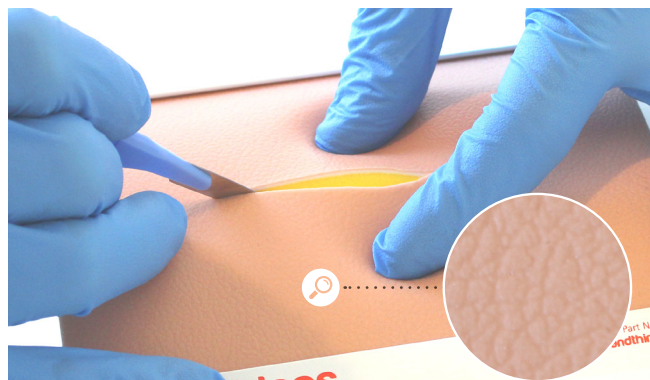
- Latex free

## Professional Skin Pad

**00091****00093****00092****00094**

SMALL (x4) SMALL (x4)

LARGE (x2) LARGE (x2)



An advanced 3 layer skin pad for demonstrating and practising a variety of incisions and a wide range of suturing techniques.

### SKILLS

- Incisions: linear, ellipse, flaps, shaped
- Subcuticular undermining
- Simple & advanced interrupted suturing techniques
- Subcuticular suturing
- Continuous suturing
- Stapling
- Use of adhesive strips

### QUALITIES

#### REALISM

- Improved, unidirectional skin texture
- Realistic tissue response with a similar drag & strength to human skin
- All layers have realistic retention of sutures

#### KEY FEATURES

- Pad dimensions: large 145mm x 125mm, small 125mm x 72mm

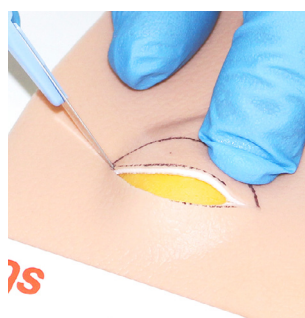
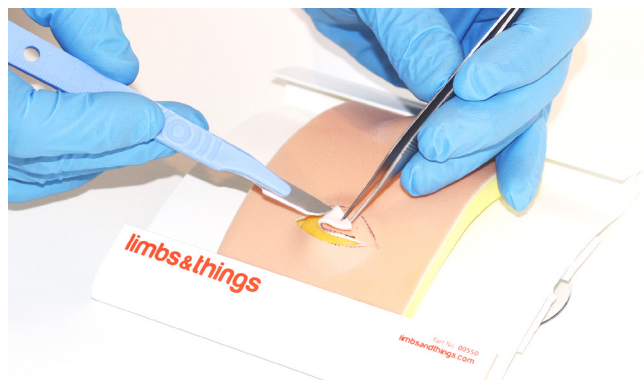
#### VERSATILITY

- Serves the needs of both specialist & beginner
- Use with the Skin Pad Jig (**00550**)

#### SAFETY

- Latex free

## Lipoma Pad

**00081**

For practising the full lipoma removal procedure. 3 layer skin: epidermis, dermis and subdermal layer. Pad contains 2 lipomas.

### SKILLS

- Designing the incision
- Marking out the lipoma
- Incising the skin
- Blunt dissection
- Removal
- Closure

### QUALITIES

#### REALISM

- Improved, unidirectional skin texture
- Lipoma is consistent with that found in a patient
- Lipoma sited within the fat layer
- Precise replication of in-vivo adhesion
- All layers of tissue can be identified

#### KEY FEATURES

- Pad dimensions: 125mm x 72mm

#### VERSATILITY

- Use with the Skin Pad Jig (**00550**)

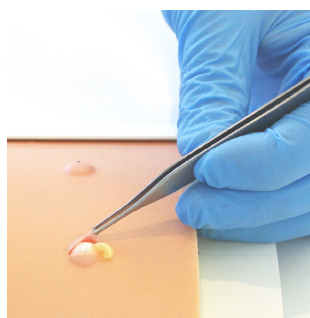
#### SAFETY

- Latex free



## Sebacious Cyst Pad

00071



For practising the full sebaceous cyst removal procedure. A 2 layer skin pad with epidermis and subdermal layer. Contains 2 cysts.

### SKILLS

- Marking out the cyst
- Planning & marking the ellipse
- Incising the skin
- Sharp dissection
- Blunt dissection
- Management of a burst cyst
- Removal
- Closure

### QUALITIES

#### ANATOMY

- Improved, unidirectional skin texture
- 2 layer skin: epidermis & subdermal layer
- Contains 2 Cysts

#### REALISM

- Cyst is consistent with that found in a patient
- Cyst exhibits appropriate adhesion to other surrounding tissue
- Cyst sited immediately below skin layer & is attached firmly to its underside
- Fragile epidermoid wall filled with simulated pus

#### KEY FEATURES

- Pad dimensions: 125mm x 72mm

#### VERSATILITY

- Use with the Skin Pad Jig Mk 3 (00550)

#### SAFETY

- Latex free

## Curettage, Snip & Shave Excision Pad

00104

SMALL (x4)



Combines a number of skin lesions (tags, naevi, seborrheic keratoses) for teaching superficial dermatological lesion removal techniques.

### SKILLS

- Snip excision
- Shave excision
- Curettage

### QUALITIES

#### REALISM

- Stretches to allow realistic extension of the tissue surrounding the skin tags during snip excision
- Stretches to allow realistic extension of naevi during shave excision
- Allows seborrheic keratoses to be removed using curettage technique

#### KEY FEATURES

- Cost effective: large pad with 4 skin tags, 4 naevi & 4 seborrheic keratoses. The small pad has 2 of each
- Pad dimensions: large 145mm x 125mm, small 125mm x 72mm

#### VERSATILITY

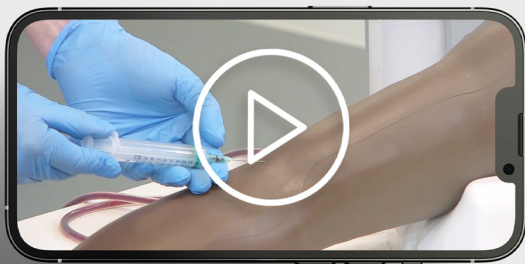
- Use with the Skin Pad Jig (00550)

#### SAFETY

- Latex free

# Hints & Things

Your video guide to easy product set-up & use



For smooth training sessions with our models visit our Hints & Things playlist on YouTube.

Our series of videos answer your how-to questions on Limbs & Things simulation with useful tips & tricks to get the most out of your models.

[limbsandthings.com](https://limbsandthings.com)



# BIRTHING SIMULATOR PROMPT FLEX RANGE

The **Birthing Simulator - PROMPT Flex** and its modules are anatomically correct and have been designed in collaboration with clinicians to aid the training and practise of normal and difficult births (including shoulder dystocia) to improve outcomes for mothers and babies during childbirth.



Explore the anatomy of PROMPT Flex outside the classroom and away from the trainer.



Augmented Reality (AR) allows learners to explore the trainer's internal anatomy on their smart device.



## Additional modules

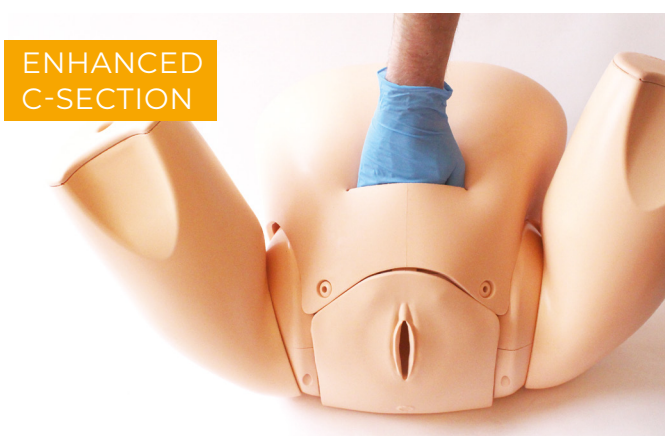
Fit either the Standard or the Advanced units allowing you to tailor your training needs.



PPH



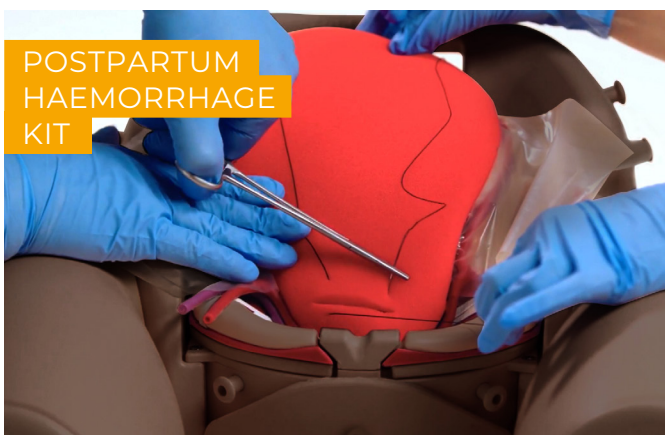
CERVICAL  
DILATATION  
& EFFACEMENT



ENHANCED  
C-SECTION



ASSISTED  
VAGINAL BIRTH



POSTPARTUM  
HAEMORRHAGE  
KIT



CERVICAL  
CERCLAGE

\* Find out more on our website

## Clean Bleed™ Mat

This easy to setup and mess free product has the ability to create the impression of haemorrhages such as postpartum through a controlled flow into a sealed mat.



See page 55 for more details.

## Birthing Simulator - PROMPT Flex - Standard

80100

80200

A modular birthing simulator allowing for numerous training scenarios.

Used either for stand-alone training or integrated into hybrid simulation, it is an ideal training solution for all skills relating to routine and difficult deliveries.



This model includes Augmented Reality

## Birthing Simulator - PROMPT Flex - Advanced

80106

80206

Incorporates wireless force monitoring where force applied to the baby's head is measured during a shoulder dystocia drill. Works with an app with inbuilt scenarios allowing monitoring and recording of force, interventions made and time taken to deliver the baby.



Tablet not included  
Download app at [limbsandthings.com](https://limbsandthings.com)



This model includes Augmented Reality

### QUALITIES

#### ANATOMY

- Birth canal & cervix
- Ischial spines & pubic bone
- Gynaecoid pelvis
- Articulating thighs
- IM injecting
- Fully articulated baby with detachable umbilical cord & placenta
- Baby includes clavicles, fontanelles & flexible head

#### KEY FEATURES

- Improved & more realistic pelvic floor
- Articulating thighs for McRoberts procedure
- Stretchable perineum
- Soft flexible birthing canal
- Additional modules to extend learning
- Optional lower legs for extended realism
- Optional wireless force monitoring for training in shoulder dystocia management

#### SAFETY

- Latex free

#### CLEANING & CARE

- Skin is washable using soap & water

### SKILLS

STANDARD ADVANCED

- |   | STANDARD | ADVANCED |
|---|----------|----------|
| • Communication & team work skills (SP)   | ✓        | ✓        |
| • Normal                                  | ✓        | ✓        |
| • Breech                                  | ✓        | ✓        |
| • Shoulder dystocia management            | ✓        | ✓        |
| • Instrumental (forceps & vacuum devices) | ✓        | ✓        |
| • Delivery of placenta                    | ✓        | ✓        |
| • Cord prolapse                           | ✓        | ✓        |
| • Urinary catheter placement              | ✓        | ✓        |
| • IM injection pads                       | ✓        | ✓        |
| • Force feedback of baby's head           | x        | ✓        |
| • App with scenarios & force monitoring   | x        | ✓        |

### WHAT'S INCLUDED

STANDARD ADVANCED

- |                                | STANDARD | ADVANCED |
|--------------------------------|----------|----------|
| Birthing Mother (+ Upper Legs) | ✓        | ✓        |
| Standard Baby                  | ✓        | x        |
| Wireless Force Monitoring Baby | x        | ✓        |
| Placenta                       | ✓        | ✓        |
| Abdomen for PROMPT Flex        | ✓        | ✓        |
| Perineum and Birth Canal       | ✓        | ✓        |
| Bed Straps                     | ✓        | ✓        |
| Lubricant                      | ✓        | ✓        |
| Wheeled Carry Case             | ✓        | ✓        |
| Augmented Reality Mat          | ✓        | ✓        |





# AUGMENTED REALITY

NEW

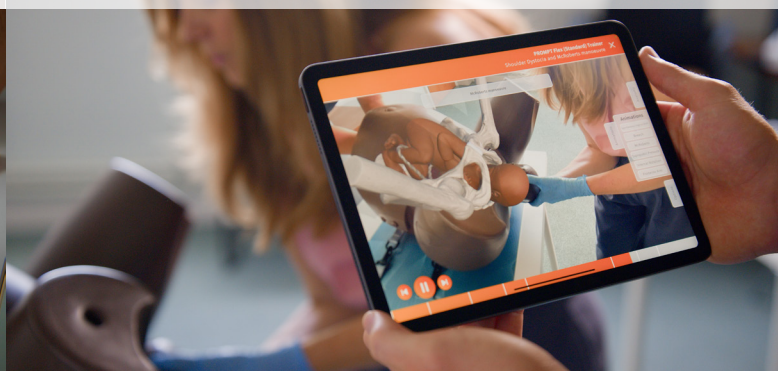


Interact with PROMPT Flex's internal anatomy on your smart device  
No extra or ongoing costs and unlimited users

During independent study



With the trainer in class



By allowing learners to visualise anatomy, Augmented Reality (AR) bridges the knowledge gap between theory and practice.

AR shows how the mother and baby's anatomy behave during different birthing scenarios, breaking down concepts that are difficult to teach into visuals that are easy for students to grasp.

Multiple students can learn at once using AR, while others can get hands on with the trainer, easily creating engaging lessons.

## FEATURES

- Interact with the PROMPT Flex internal anatomy
- Visualise different birthing scenarios with animations

## VERSATILITY

- Run engaging & memorable lessons
- Multiple students learning at once
- Continued learning away from the model

## SPECIFICATIONS

- Included with PROMPT Flex Standard & Advanced
- No extra or ongoing costs
- Unlimited users



## Cervical Dilatation &amp; Effacement Module (CD&amp;E) - PROMPT Flex



80102

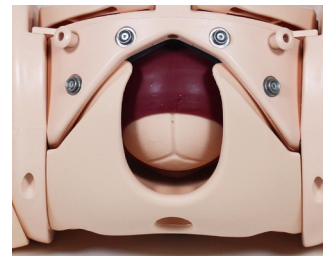
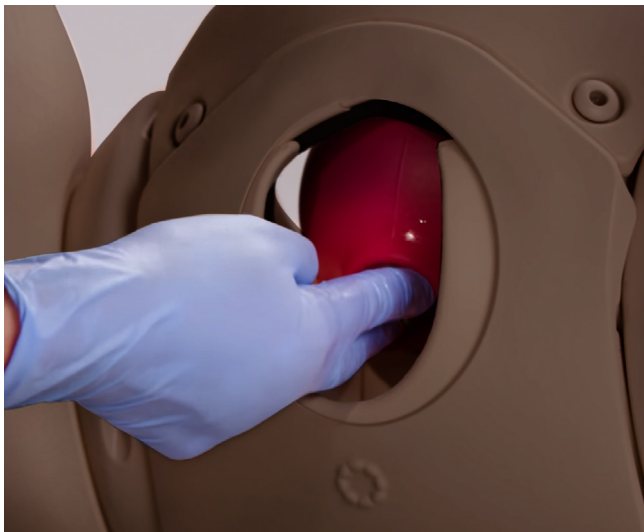
80202

Allows for training in assessment of both the latent and active first stages of labour.

This versatile module is an optional add-on to the PROMPT Flex Standard or Advanced.



Ideal for midwifery training.



Foetal station adjustment (-3 to +3)    Cervical Dilation (1-10cm)

## QUALITIES

### REALISM

- Realistic representation of cervixes, including anterior lip, & presenting parts in soft birth canal, with palpable ischial spines

### KEY FEATURES

- Inserts to represent early labour cervixes - effacement, dilation and ripeness in line with Bishop's scoring
- Positioning mechanism allows adjustment of station, dilation and tilt without removal from the simulator
- Dynamic positioning mechanism allows adjustment of dilation in active labour
- Markers allow tutor to read positioning in situ
- Numerous presenting part inserts including
  - flexed
  - deflexed
  - brow
  - face
  - breech
  - caput & moulding

### VERSATILITY

- Presenting parts & cervix can be set up outside the model for demonstration, then placed inside for examination

### SAFETY

- Latex free

## SKILLS

- Assessment & Bishop's scoring of:
  - Cervical dilation (1-10cm)
  - Cervical effacement (0-100%)
  - Cervical ripeness/consistency (soft, medium, hard)
  - Cervical position (anterior, mid, posterior)
  - Foetal station (-3 to +3)
- Assessment of & artificial rupture of membranes
- Assessment of presenting part - flexed, deflexed, brow, face, breech, caput & moulding & caput formation

## WHAT'S INCLUDED

Perineum
Pelvic Ring
Static Rig
Dynamic Rig
Set of 7 Latent Labour Cervixes
Dynamic Cervix
Set of 5 Presenting Parts
Set of 2 Difficult Labour Heads
Amniotic Membrane Set
Set of 3 Caputs (x2)

## Assisted Vaginal Birth Module (AVB) - PROMPT Flex

80310

80410



This module has been developed to work with PROMPT Flex for the practice instrumental delivery procedures using both ventouse and forceps deliveries.

An innovative design allows the ventouse to realistically adhere to the baby's skin, while inserts within the uterus allow for forceps to be inserted and remain in place while the second blade is positioned and gives a realistic level of resistance whilst delivering the baby.



### QUALITIES

#### REALISM

- Forceps are retained in place once inserted
- Realistic suction when attaching a ventouse
- Realistic resistance when delivering the baby

#### KEY FEATURES

- Tested with a wide range of instruments used during an assisted birth
- The perineum & inserts are designed specifically to give a realistic resistance during delivery
- Additional Baby Mask allows for successful suction when using a vacuum device
- Uterus holds the baby in the correct positioning, allowing for "hand's free" training can be used for both cephalic & breech deliveries

#### VERSATILITY

- This module is compatible with the PROMPT Flex Birthing Simulators, PROMPT Flex Baby models & Birthing Mother base units
- Allows for training in operative vaginal births, including: forceps delivery, ventouse delivery (Kiwi™ cup), breech delivery with Pipers forceps

#### SAFETY

- This product is latex free

### SKILLS

- Direct cephalic delivery with the use of both forceps & ventouse
- Forceps – Classical style (Simpson, Elliot, Tucker Mc-Lane etc.)
- Ventouse (Kiwi™ Cup)
- Breech delivery (Pipers forceps)
- Rotational delivery (Kiellands, Kiwi™ cup)
- Other devices (OdonAssist™)
- Teamwork & human factors training in Assisted Vaginal Birth

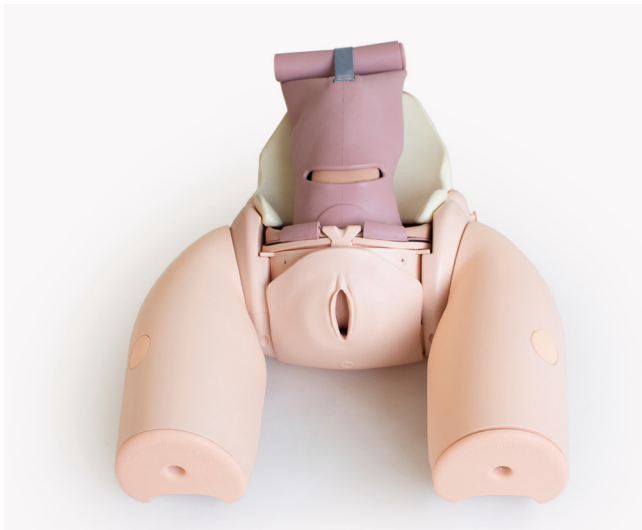
### WHAT'S INCLUDED

Uterus for AVB
Perineum for AVB
Baby Mask for AVB
Foam Inserts for AVB
Foam Uterus Support

## Enhanced Caesarean Section Module (ECSM) - PROMPT Flex

80300

80400



Ideal for practising the necessary skills required when performing both routine and complex caesarean section. Trainees can have exposure to delivering a difficult baby such as an impacted foetal head (IFH), or a transverse lie.

A pre-incised abdomen allows for repeated delivery practice to help improve confidence and familiarity of manoeuvres.

The module can be used to practise any of the following methods of delivering a deeply impacted foetal head:

- Manual cephalic extraction manoeuvres
- Vaginal push up
- Reverse breech extraction (pull technique)
- Patwardhan's technique

## QUALITIES

### REALISM

- Abdominal skin has realistic appearance, fat layer & feel of at-term abdomen
- Realistic feel of uterus interior during delivery
- Head & shoulders present at realistic level in relation to the uterine incision

### KEY FEATURES

- Uterus holds baby firmly in position for cephalic, breech & transverse presentations
- Fundal pressure can be applied to aid delivery of the baby for IFH manoeuvres
- Pre-incised skin allows easy repeat delivery practice
- Realistically mimics the restrictive space of the pelvic inlet for IFH manoeuvres
- Accommodates retraction using metal, plastic or rubber retractors

### VERSATILITY

- Allows for training in routine & complex caesarean section at full dilation

### SAFETY

- Latex free

## SKILLS

- Cephalic & breech delivery
- C-section at full dilation:
  - Head disimpaction using vaginal push methods
  - Use of balloon disimpacting device
  - Reverse breech extraction
  - Patwardhan's techniques
- Transverse lie
- Instrument assisted C-section delivery
- Delivery of the placenta for routine C-sections
- Teamwork & human factors training in emergency C-section

## WHAT'S INCLUDED

Perineum  
 Uterus for Caesarean Section Module  
 Impacted Foetal Head Uterus  
 Pre-incised Delivery Skin  
 Cervix for Caesarean Section Module  
 Foam Uterus Support  
 Pelvic Floor



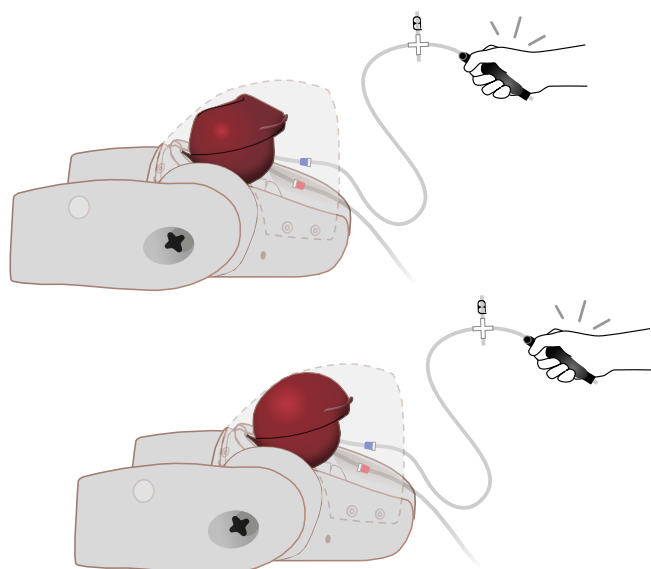
## Postpartum Haemorrhage Module (PPH) - PROMPT Flex

80101

80201

This module is an optional add-on for the Standard or Advanced Birthing Simulators.

It allows training in the management of post-partum bleeding, and offers a realistic simulation of an atonic and contracting uterus.



### SKILLS

PPH MODULE	PPH KIT
80101	80112
80201	80212

Management of postpartum bleeding:

• Fundal massage	✓	✓
• Bi-manual compression	✓	✓
• Haemostatic balloon insertion & management	✓	✓
• Communications skills with mother	✓	✓
• Intramuscular injection	✓	✓
• Estimating blood loss	✓	✓
• Common types of compression suture	x	✓
• Dissection of broad ligament	x	✓
• Ligation of uterine arteries	x	✓



### WHAT'S INCLUDED

PPH Uterus Assembly - PROMPT Flex  
Concentrated Venous Blood - Starter Pack (x2)  
PPH Blood Container - PROMPT Flex



### QUALITIES

#### REALISM

- Atonic uterus can simulate contraction on fundal massage

#### KEY FEATURES

- Blood loss of up to 2 litres can be simulated
- Air bulbs are used to stimulate blood flow & control atonic state of the uterus

#### VERSATILITY

- Can be quickly & easily fitted into the birthing mother to allow simulation of situations where bleeding occurs directly after delivery

## Postpartum Haemorrhage Kit - PROMPT Flex

80112

80212

For the management of postpartum bleeding and care including performing a compression suture and ligating the uterine artery.

#### KEY FEATURES

- Includes the PPH module
- Has a uterus suitable for all common types of compression sutures
- Practice ligation of the uterine artery
- Dissection of broad ligament



### WHAT'S INCLUDED

Postpartum Haemorrhage Module - PROMPT Flex  
Compression Suture Uterus (Pack of 2)  
Pre-incised Delivery Skin for PROMPT Flex

# Clean Bleed® Mat

70400



Integrate blood loss into your birthing scenarios effortlessly



**Use the Clean Bleed Mat in conjunction with our PROMPT Flex Birthing Simulator to create realistic haemorrhage scenarios.**

Adding blood to birthing simulation encourages trainees to consider blood loss as a key indicator of a patient's condition and practice identifying when different interventions need to be made.

## 4 WAYS THE CLEAN BLEED MAT MAKES FLUID SIMULATION SIMPLE

- Easy set-up
- Controlled speed: use the dial to adjust flow
- No mess: the bleed is contained in a sealed mat
- Reusable: pads and blood can be used multiple times

## SKILLS

- Recognition of blood loss
- Visual assessment of severity
- Perform Quantification of Blood Loss (QBL)
- Initiate interventions
- Evaluate success of interventions

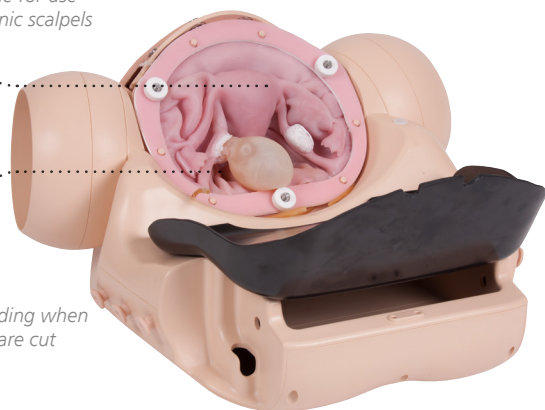
## Surgical Female Pelvic Trainer (SFPT) Mk 2

60251

A simulator for training in a wide range of laparoscopic gynaecological surgical techniques and procedures. The uterus component can be easily removed and replaced after use.

Compatible for use  
with harmonic scalpels

Lifelike bleeding when  
arteries are cut



Abdominal Skin with realistic tissue properties for trocar insertion

Realistic representation of uterus & pathologies



### QUALITIES

#### ANATOMY

- Includes:
  - Uterus
  - Cervix
  - Bladder
  - Ovaries
  - Ureters
  - Ovarian artery
  - Dunn's pouch
  - Ovarian cyst
  - Fibroid
  - Cardinal ligament
  - Abdominal skin with realistic tissue properties for trocar insertion
  - Pelvic floor with sympathetic features
  - Vagina
  - External introitus
  - Fallopian tube
  - Broad ligament
  - Uterine artery
  - Pouch of Douglas
  - Bowel & sigmoid
  - Ectopic pregnancy
  - Uterosacral ligament

#### REALISM

- Insufflation of abdomen is represented

#### KEY FEATURES

- Provides practice & role playing for gynaecological perioperative teams
- Includes a realistic vaginal canal & cervix for inspection, in which a uterine manipulator can be used
- Realistic bleeding when arteries are cut

#### VERSATILITY

- Compatible for use with harmonic scalpels

#### SAFETY

- Capsule in uterus contains latex

### SKILLS

- All skills relevant to performing the following procedures:
  - Salpingectomy
  - Myomectomy
  - Hysterectomy
  - Salpingostomy
  - Cystectomy
  - Oophorectomy
- Dissection down to & location of ureters
- Insertion & use of uterine manipulator
- Working with various gynaecology instruments
- Identification of anatomical landmarks

### WHAT'S INCLUDED

- SFPT Mk 2 Abdomen
- SFPT Mk 2 Surgical Uterus
- SFPT Mk 2 Abdominal Skin Pad
- SFPT Mk 2 Perineum
- SFPT Mk 2 Bowel
- Venous Blood Starter Kit
- SFPT Mock Blood Kit (includes reservoir and pump)
- Blunt Dispensing Needle and Syringe

### CONSUMABLES

- 60256 SFPT Uterus (x5)
- 60257 SFPT Uterus (x10)
- 00021 Concentrated Venous Blood

#### Patents granted

- US6336812 • EP099027 • DE69804793 • CA 2293585
- ZL98806331 • HK1023832 • 755575 Australia

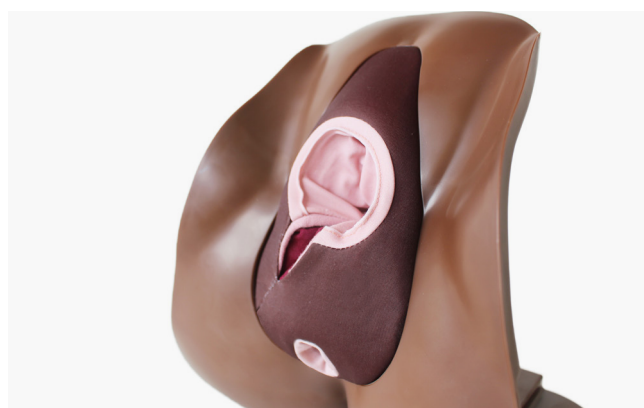


## Mediolateral Perineal Repair Trainer



61141

61151



## Midline Perineal Repair Trainer

61140

61150



This model allows trainees to learn the suturing techniques for repairing a 1st or 2nd degree perineal repair. The fabric construction can accommodate repeated early learning training ideal for skill acquisition.

### SKILLS

- Recognition of internal anatomy
- Tissue handling
- Classification of injury
- Repair of a lacerated perineum

### QUALITIES

#### ANATOMY

- Hymenal remnants, vaginal mucosa, perineal skin, perineal dermis, perineal muscles & palpable anal sphincter

#### KEY FEATURES

- Durable insert for cost-effective procedural training
- Anatomically accurate, key anatomical layers can be sutured
- Illustration pack representing each degree of perineal trauma to aid identification of key landmarks & internal anatomy

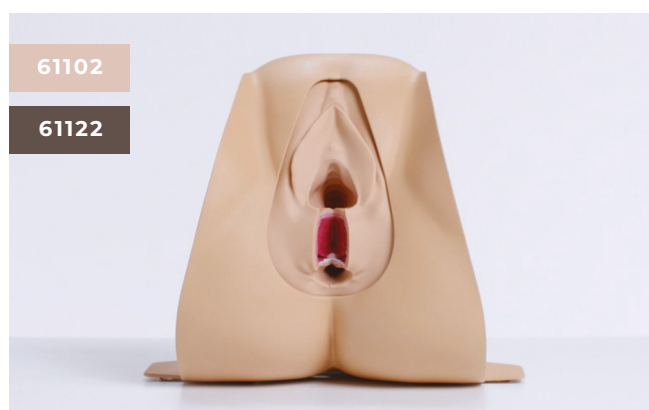
#### VERSATILITY

- Can be used alongside PROMPT Flex by placing in front of the birthing mother to add further realism
- Quick & easy to set up
- Clamps provided to secure trainer to benchtop
- Compact & portable
- Available in either Midline or Mediolateral presentation for regional variation

### WHAT'S INCLUDED

- Midline Repair Pad (x1) **OR** Mediolateral Repair Pad (x1)
- Perineal Repair Stand with Clamps
- Perineal Repair Block Loading Frame
- Perineal Repair Illustration Pack

## Anal Sphincter Repair Trainer



This model allows trainees to learn how to perform a 4th degree perineal repair. A stand accommodates one anal sphincter repair block.

### SKILLS

- Recognition of internal anatomy
- Tissue handling
- End-to-end repair of the external anal sphincter
- Overlap repair of the external anal sphincter
- Repair of the internal anal sphincter & anal mucosa

### QUALITIES

#### ANATOMY

- Hymenal remnants, vaginal mucosa, perineal skin, perineal muscles, external anal sphincter, internal anal sphincter, anal mucosa & pararectal fat

#### REALISM

- Soft skin with a similar drag & strength to human skin

#### KEY FEATURES

- Anatomically accurate, all key anatomical layers can be sutured
- Illustration pack representing each degree of perineal trauma to aid identification of key landmarks and internal anatomy

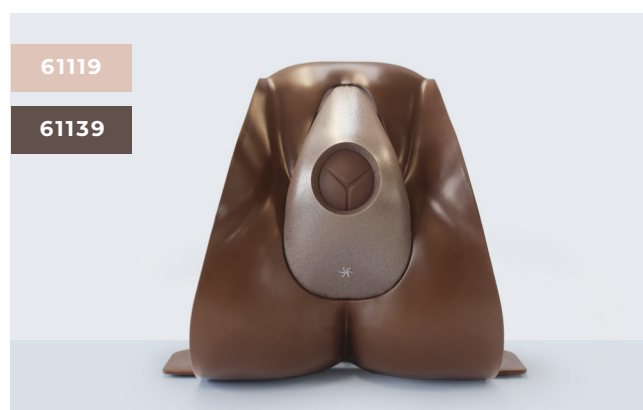
#### VERSATILITY

- Can be used with a simulated patient
- Quick & easy to set up
- Clamps provided to secure trainer to benchtop
- Compact & portable

### WHAT'S INCLUDED

Anal Sphincter Repair Block (x2)  
Perineal Repair Stand with Clamps  
Perineal Repair Block Loading Frame  
Perineal Repair Illustration Pack  
Water Based Lubricant

## Episiotomy Trainer



This cost effective model is designed to be used with the Perineal Stand in a classroom setting to ensure acquisition of confidence in the training of episiotomy.

It offers repeatable training and contains an illustration pack that supports trainees in gaining confidence in performing this procedure.

### SKILLS

- Identification of fontanelles
- Handling of a stretched perineum
- Reducing the risk of damaging the baby or mother
- Infiltration of perineum prior to episiotomy
- Performance of mediolateral (or midline) episiotomy
- Use of instruments

### QUALITIES

#### REALISM

- Realistic representation of tissue to represent a stretched perineum

#### KEY FEATURES

- Baby head has realistic look and feel, providing landmarks and appropriate tactile response when inserting fingers to guard the baby's head
- Repair tape increases the longevity of the episiotomy pad, allowing for multiple uses per pad
- Illustration pack to help trainees get familiarised with key landmarks and where to place the cut

### WHAT'S INCLUDED

Episiotomy Incision Pad (x2)  
Perineal Repair Stand with Clamps  
Episiotomy Repair Tape (x24)  
Episiotomy Baby Head  
Episiotomy Illustration Pack

## Infant Hip Exam

42000

42010

42004

42014



Our Infant Hip Exam (IHE) Trainer has been designed to meet the specific requirements of healthcare professionals training to identify and diagnose developmental dysplasia of the hip (DDH). This simulator represents a 1-month-old female and can simulate a normal, dislocated and

dis-locatable or 'lax' hip joint, allowing for practice of Barlow and Ortolani manoeuvres as well as the Galeazzi sign. The baby has been designed with interchangeable normal and abnormal leg modules and one upper torso.



### QUALITIES

#### ANATOMY

- Palpable greater trochanter on the left and right femurs to aid correct hand placement
- Articulating hip, knee & ankle joints for the Barlow & Ortolani manoeuvres and Galeazzi sign

#### REALISM

- Realistic 'clunk' can be felt when resetting the dislocated hip
- Anatomically accurate 1-month-old female infant

#### KEY FEATURES

- Quick & easy to set up
- Durable model that allows for repeated training using the Barlow & Ortolani manoeuvres
- Normal hip module – allows trainees to understand the haptics of a normal hip
- Abnormal hip module - one hip that is dislocated & can be manoeuvred into & out of the correct position using the Barlow/ Ortolani technique & one dis-locatable or 'lax' hip that can be dislocated & relocated when using the Barlow/ Ortolani technique
- Articulating knee & ankle joints mean the baby's feet can be placed flat replicating the Galeazzi sign
- Realistic weight to practice manoeuvring

#### VERSATILITY

- Interchangeable lower modules allow trainees to recognise normal hips as well as two types of abnormal hip joint

#### SAFETY

- Latex free

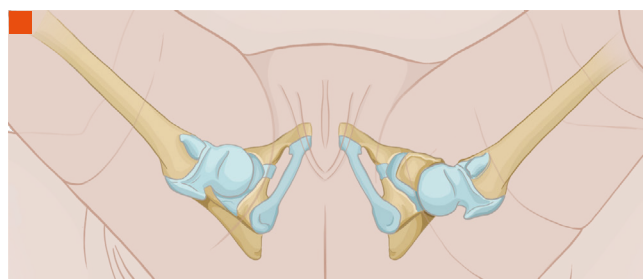


Illustration of internal hips & how they present in the model  
Barlow manoeuvre  
Galeazzi sign

### WHAT'S INCLUDED

	42000	42004
	42010	42014
IHE Upper	✓	✓(x2)
IHE Lower Normal	✓	✓
IHE Lower Abnormal	✓	✓
IHE Illustration Card	✓	✓



## TruBaby X

TCTB10001X

TCTB10001XDS

TruBaby X provides a complete solution for paediatric clinical training. It is an ideal model for practicing Directly Observed Practical Skills (DOPS), Paediatric Advanced Life Support (PALS) and critical emergency medicine including infant airway management, CPR, IV cannulation, chest decompression and lumbar puncture.




## TruBaby X Lite

TCTBL10001X

TCTBL10001XDS

TruBaby X Lite offers a focused training experience for beginners, and experienced learners looking to refresh their paediatric practical skills.

SKILLS	Lite	TruBaby X
Airway management	✓	✓
CPR	✓	✓
IO tibia	✓	✓
Peripheral venous cannulation	✓	✓
Urethral catheterisation (male & female)	✓	✓
Intramuscular injection	✓	✓
Lumbar puncture	×	✓
Needle decompression & chest drain	×	✓



■ Airway Intubation  
■ IV cannula insertion  
■ Foley urinary catheterisation  
■ Lumbar puncture

## Paediatric Lumbar Puncture Simulator II

KKM43D

 KYOTO KAGAKU

Designed to represent a 7 to 10-month-old infant, this model is used to practise the lumbar puncture procedure.

### QUALITIES

#### KEY FEATURES

- Realistic tissue resistance
- Iliac crests & spinous process are present & palpable

#### VERSATILITY

- Puncture block is quick & easy to replace
- Puncture sites not visible on skin
- Successful puncture is confirmed by the simulated CSF (water) flowing out
- CSF pressure can be measured with a manometer
- Variation of puncture depth



### SKILLS

- Skin preparation
- Patient positioning
- Palpation of landmarks
- Sterilisation & local anaesthesia
- Needle positioning & insertion
- Cerebrospinal fluid (CSF) collection & pressure measurement

## SHOULDER INJECTION TRAINER RANGE

This range combines physical practice with the guidance of technology. It provides a repeatable teaching and training platform for shoulder injections in the 4 most common sites.

Both models share a common torso but offer different levels of complexity to support trainees from early learning through to specialist level.

### Shoulder Injection Trainer - Palpation Guided

70201

70220

70200\*

70219\*

\*With tablet included

The accompanying Android app allows learners and teachers to visualise the underlying anatomy, as well as clearly signalling success.

#### SKILLS

- Practise multiple approaches to specific sites
- Identification of anatomical landmarks using palpation guidance
- 4 common injection sites:
  - Acromioclavicular joint
  - Glenohumeral joint
  - Bicipital groove
  - Subacromial space
- Rotation of the shoulder to locate head of the humerus

#### QUALITIES

##### REALISM

- Discrete muscle & skin layers for realistic needle feel

##### KEY FEATURES

- Palpation to find the four most common injection sites
- Instant feedback for the trainee when a site is correctly located
- Injections from multiple approaches to allow for different preferences
- Suitable for postgraduate learning
- App features full 360-degree view of underlying anatomy & injection sites to aid learning
- Cost effective replacement skins

##### VERSATILITY

- Each skin can withstand up to 500 injections per site (1 x spare shoulder skin supplied)
- Simple bluetooth connection between app & trainer
- Requires a 21 gauge needle (supplied)
- Batteries (2 x AA supplied) last for up to 500 hours

##### SAFETY

- Latex free

#### WHAT'S INCLUDED

Shoulder Module - Palpation Guided

Shoulder Skin (x1 spare)

Shoulder Torso

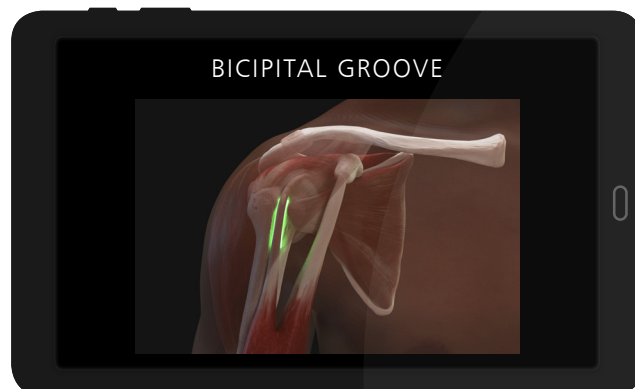
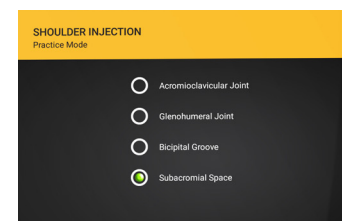
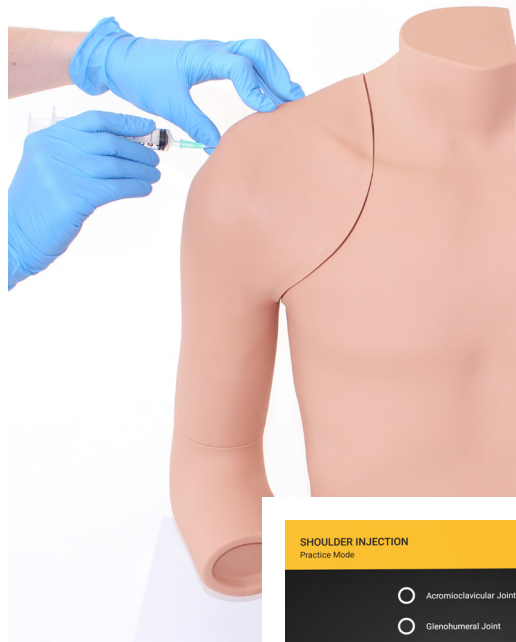
Needle Set

Android Tablet (optional)

Elbow

AA Batteries (x2)

Carry Case



*The application includes interactive shoulder anatomy and links to injection technique guides.*

## Shoulder Injection Trainer - Ultrasound Guided

70202

70221



Caters for ultrasound guided techniques, as well as allowing injection and aspiration of fluids under ultrasound.

\*With tablet included

### SKILLS

- Patient positioning & management
- Identification of anatomical landmarks using ultrasound guidance
- 4 common injection sites:
  - Acromioclavicular joint
  - Glenohumeral joint
  - Biceps tendon sheath (which lies in the bicipital groove and surrounds the tendon)
  - Subdeltoid bursa (in the subacromial space)
- Competence using ultrasound technology to perform injections in different planes using different approaches
- View the suprascapular nerve under ultrasound



### QUALITIES

#### REALISM

- Innovative materials within the shoulder create close to life ultrasound images

#### KEY FEATURES

- Echolucent materials visible under ultrasound represent the key internal landmarks
- Successful injection or aspiration can be confirmed by visualising fluid entering or leaving the site
- The quantity of fluid in the subdeltoid bursa can be adjusted, from no fluid present to a fluid-filled distension for differing skill levels
- Nerve block functionality - allows trainees to view & inject around the suprascapular nerve

#### VERSATILITY

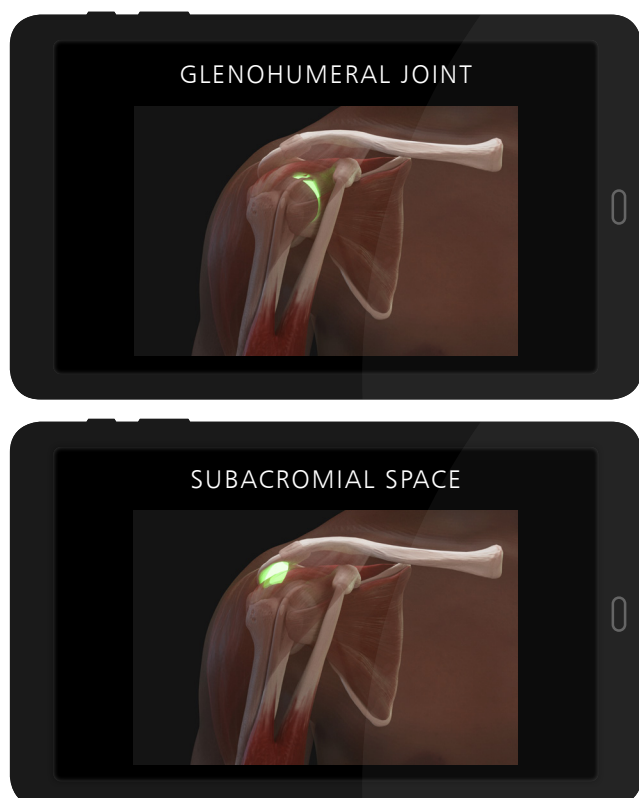
- Watertight and durable for up to 400 injections per site
- Altering the size of the bursa allows trainers to change the level of training difficulty (less fluid is more challenging to inject)
- Synovial fluid has a realistic colour

#### SAFETY

- Latex free

### WHAT'S INCLUDED

Shoulder Module - Ultrasound Guided  
Shoulder Torso  
Needle Set  
Synovial Fluid (250ml)  
Elbow  
Ultrasound gel  
Carry Case





# Knee Aspiration & Injection Trainer with Ultrasound Capability

70103

70114



An anatomically accurate adult knee model for aspiration of synovial fluid and joint injection from both the lateral and medial aspects, using ultrasound-guidance or palpation.

The robust sealed knee includes knee joint, patella, patellar tendon and the suprapatellar space.

## SKILLS

- Injection into joint cavity
- Aspiration of synovial fluid from both the lateral & medial aspects
- Competence using ultrasound technology to perform systematic scanning techniques & examination of the knee joint
- Identification of anatomical landmarks using ultrasound guidance or the palpation method
- Patient positioning & management
- Recognition of joint effusion
- Ballottement of the patella

## ANATOMY

- Key anatomical landmarks are realistic to palpate:
  - Skin
  - Subcutaneous fat, quadriceps tendon & patellar ligament
  - Prefemoral, suprapatellar & hoffa (infrapatellar) fat pad
  - Femur
  - Medial & lateral collateral ligament
  - Tibia
  - Patella
  - Joint space & synovial recess
  - Meniscus
  - Muscle mass of quadriceps



Key internal landmarks visible under ultrasound



## QUALITIES

### REALISM

- Discrete muscle & skin layers provide realistic tissue & needle response
- Anatomically accurate synovial sac & palpable patella
- Realistic colour & consistency of synovial fluid

### KEY FEATURES

- 1000+ stabs per module with 21 gauge needle
- Precise, palpable anatomy with bony landmarks
- Robust, sealed knee unit that holds all anatomy
- Key internal landmarks visible under ultrasound
- Compatible with all standard ultrasound machines
- Echolucent material allows aspiration & injection under ultrasound-guidance
- Suitable for undergraduate & postgraduate medical study
- Knee skin is watertight

### VERSATILITY

- Caters for ultrasound-guided technique as well as palpation
- Can be used with leg supports for supine position, or without leg supports for side of bed position
- Separate fluid bag & stand ensure the model is easy to use and mobile
- Indicator on fluid bag to prevent overfilling

### SAFETY

- Latex free

## WHAT'S INCLUDED

- Ultrasound Knee Module for Aspiration & Injection
- Fluid Bag & Stand
- Synovial Fluid (including Syringe)
- Needle Set – 3 Green Needles, 1 Syringe, 1 Sharps Bin
- Leg Unit, including Removable Supports
- Carry Case

## Hand & Wrist Injection Trainer

70230\*

70232

\*With tablet  
included

Suitable for all levels of training, the Hand & Wrist Injection Trainer allows trainees and clinicians to practise and teach injections in five different locations (carpal tunnel, De Quervain's sheath, trigger finger, first carpometacarpal joint and the distal radioulnar joint). The model also highlights when incorrectly injected, ensuring trainees learn to avoid the median nerve.

The trainer comes equipped with an optional Android tablet, which works in unison with our newly developed app. The app, coupled with innovative sensory technology, provides learners with wireless, real-time feedback from the procedure.

### SKILLS

- Model allows for injection into:
  - Carpal tunnel
  - De Quervain's sheath
  - Trigger finger
  - 1st carpometacarpal joint
  - Distal radioulnar joint
- Patient positioning & management
- Identification of anatomical landmarks

### ANATOMY

- Injection sites:
  - Carpal tunnel
  - De Quervain's sheath
  - Trigger finger
  - First carpometacarpal joint
  - Distal radioulnar joint
  - Median nerve
- Bone structures:
  - Radial styloid
  - Ulnar styloid
  - Trapezius and scaphoid
  - First carpometacarpal joint space
  - Distal radioulnar joint space
  - Lister's tubercle
- Internal product anatomy:
  - Palmaris longus
  - Flexor carpi radialis
  - Extensor digitorum group
  - Extensor digiti minimi
  - Abductor pollicis longus
  - Extensor pollicis brevis
  - Extensor pollicis longus



### QUALITIES

#### REALISM

- Interactive model anatomy
- Anatomically correct
- Includes important ligament & skeletal structures

#### KEY FEATURES

- Facilitates injection in 5 key sites
- Presence of median nerve allows for negative feedback
- New app provides interactive real-time feedback
- Each site can withstand over 200 injections
- Skin can be easily removed & changed

#### VERSATILITY

- Lightweight & easily portable
- App can be set to English UK, English USA, French, Mandarin, Spanish, German & Russian

#### CLEANING & CARE

- Skin surface is washable using soap & water

#### SAFETY

- Fluid should not be injected into any of the sites, due to the electronics contained
- Latex free

### WHAT'S INCLUDED

- Hand & Wrist Model
- Hand & Wrist Skin (1x spare)
- Android Tablet (optional)
- Needle Set – 3 Orange Needles, 1 Syringe, 1 Sharps Bin
- AA Batteries (x2)

## Elbow for Joint Injection



For practising soft tissue joint injection used for the treatment of injuries and arthritis. The arm is presented for the treatment of both golfer's and tennis elbow.

### SKILLS

- Patient posture & management
- Palpation techniques
- Identifying anatomical landmarks & painful areas
- Injections for:
  - Tennis elbow (lateral epicondylitis)
  - Golfer's elbow (medial epicondylitis)
- Training in fan or cone infiltration techniques

### QUALITIES

#### REALISM

- Flexed right elbow, which rotates on the stand

#### KEY FEATURES

- Easy-to-use feedback Console: LEDs light up when correct injection sites have been acquired, point of maximal tenderness has been palpated & when the ulnar nerve has been hit

#### VERSATILITY

- Supplied with 'No Trace' marker (non-permanent rapidly fading ink) for illustrating underlying anatomical landmarks

#### SAFETY

- Latex free

### WHAT'S INCLUDED

'No-Trace' Marker  
 Elbow Needle Set  
 Elbow Skin  
 Elbow for Joint Injection  
 Feedback Console with batteries

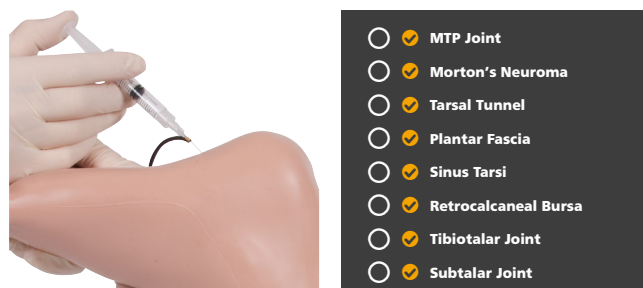
## Foot & Ankle for Joint Injection



A foot and ankle for practising soft tissue injection for the treatment of injuries and arthritis. Designed in collaboration with Mr Jim Pickard and Dr Chris Davies from the University of Huddersfield, UK.

### SKILLS

- Patient posture & management
- Palpation techniques
- Identifying anatomical landmarks
- Injection sites for:
  - Metatarsophalangeal (MTP) joint
  - Tarsal tunnel
  - Sinus tarsi
  - Tibiotalar joint
  - Morton's neuroma
  - Plantar fascia
  - Retrocalcaneal bursa
  - Subtalar joint



### QUALITIES

#### ANATOMY

- Represents normal anatomy as required for palpation purposes

#### KEY FEATURES

- Easy-to-use feedback console: LEDs light up when correct injection sites have been acquired

#### SAFETY

- Latex free

### WHAT'S INCLUDED

Foot & Ankle Needle Set  
 Foot & Ankle Skin  
 Foot & Ankle Musculature  
 Foot & Ankle for Joint Injection  
 Feedback Console with Batteries



## Colles' Fracture Reduction Trainer

70250



The Colles' Fracture Trainer is an ideal training tool for learners looking to gain confidence in the reduction of Colles' fractures occurring at the distal end of the radius.

The portrayal of an elderly female arm coupled with a fractured distal fragment of the radius provides trainees with a platform for repeatable and consistent practice of manual Colles' reduction (closed) and plastering techniques. As is typical in a real-life emergency setting, the model allows trainees to perform visual inspections and identification before facilitating a team focussed Colles' fracture reduction.

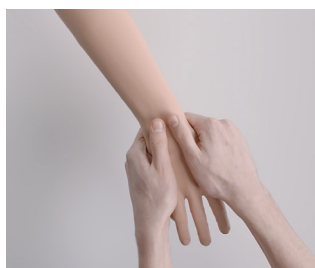
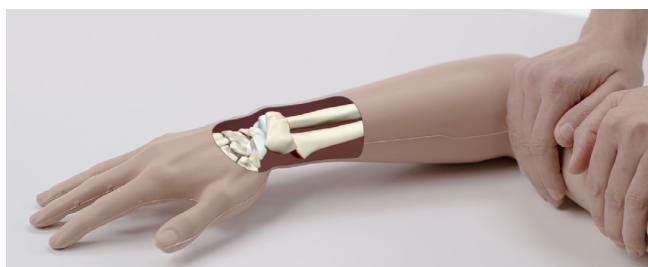
An adjustable tension mechanism allows trainers to alter the difficulty of the procedure for advanced learning.



Developed in collaboration with Dr Salwa Malik of Brighton and Sussex University Hospitals NHS Trust and Dr Yasir M. Shaukat of Surrey and Sussex Hospitals NHS Trust

### SKILLS

- Visual inspection & identification
- Reduction of the fracture (closed reduction)
- Plastering techniques
- Adjustable tension for different difficulties to be simulated
- Teamwork & communication when reducing the fracture



### QUALITIES

#### ANATOMY

- Fractured distal fragment of radius
- Head and body of the ulna

#### REALISM

- Realistic representation of a 'dinner-fork' deformity
- Lifelike haptic feedback when carrying out the procedure

#### KEY FEATURES

- Adjustable tension allows for progressive levels of difficulty
- Trainees can perform all three stages of reduction: exaggeration (to disimpact the fracture), traction & flexion
- Accommodates a number of plastering techniques, including: back slab, circular cast, sugar-tong splint & 3-point moulds
- Variable height stand allows users to adjust the height of the model for training ease
- Replaceable hand and skin

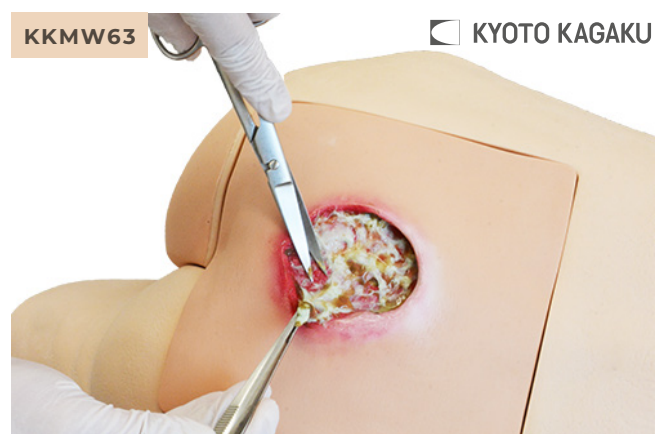
#### SAFETY

- Latex free

### WHAT'S INCLUDED

Colles' Fracture Arm (with skin included)  
Adjustable Height Stand  
Hex Keys (x2) - Large and Small

## Pressure Sores Simulator



KKMW63 Pressure Sores Simulator is a decubitus care skills trainer for the new era. Its detailed representation allows for a wide range of training scenarios, including sore assessment, ultrasound assessment of deep tissue injury and necrotic tissue removal.

### SKILLS

- Characterisation of pressure sores
- Assessment of deep tissue in sciatic area by ultrasound
- Prevention & treatment of pressure ulcers / cleansing / dressing
- Debridement of necrotic tissue

## Freddie Fistula™ Skills Trainer



This realistic skills trainer facilitates the instruction and practice of the management of open abdominal wounds with active fistulas.

### SKILLS

- Competency & confidence in stoma identification
- Identifying the source of effluent flow
- Management of drainage
- Employment of wound dressing materials & techniques (including negative pressure wound therapy)

## Seymour II Wound Care Model™



Based on a 74-year-old patient, this model aids in the identification and assessment of wounds. Once the different aetiologies are understood, it can be used to discuss and devise treatment plans.

### SKILLS

- Wound assessment (classification & staging)
- Wound cleansing
- Dressing techniques
- Measurement of wound length, depth, undermining & tunnelling
- Negative pressure wound therapy

## 'Wilma' Wound Foot™



Based on an 80-year-old patient for a true-to-life appearance, the model offers 20 conditions which allow for the identification and staging of wounds and their probable causes.

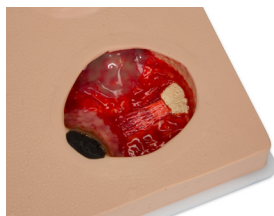
### SKILLS

- Wound assessment
- Routine cleansing
- Dressing techniques

## Pat Pressure Ulcer Staging Model

VTA0980

A unique, compact, comprehensive and realistic model displaying a range of pressure injuries. Recognition, routine cleansing and dressing changes can be taught and practiced on all wounds.



## Medical Footcare Model

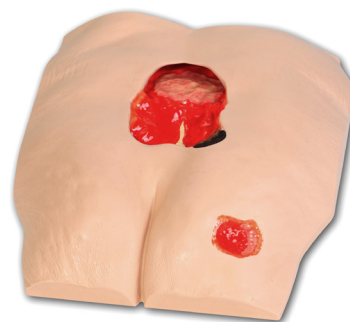
KKM66

 KYOTO KAGAKU


## Stan Stage IV Pressure Injury Model™

VTA0970

VTA0975

**VATA**

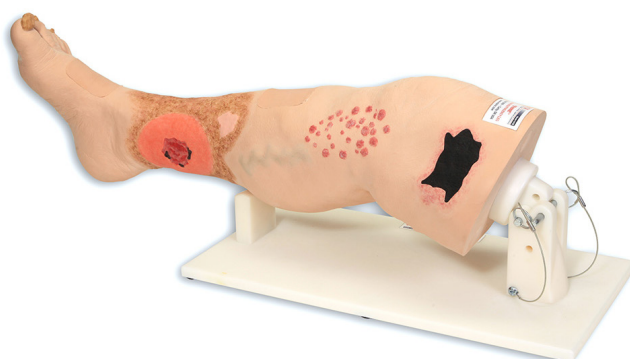
## Annie Arterial Insufficiency Leg Model

VTA0555

**VATA**

## Vinnie Venous Insufficiency Leg Model

VTA0550

**VATA**



# eoSim™

The eoSim™ range of Laparoscopic box trainers allows trainees to practice their laparoscopic skills on a range of up to 18 curated tasks. Each box comes complete with four modular task bases, Laparoscopic instruments, an integrated digital camera and rechargeable light-source.



## QUALITIES

### KEY FEATURES

- Portable brief-case design for maximum portability
- Comes with everything you need
- Quick & easy to set up trainer
- Easily interchanged tasks
- Works with mobiles & tablets
- Built-in HD webcam for use with PC or Mac

## SKILLS

- Minimally invasive surgery
- Psycho-motor skills associated with laparoscopic surgery
- Instrument handling
- Includes 18 different tasks to practice

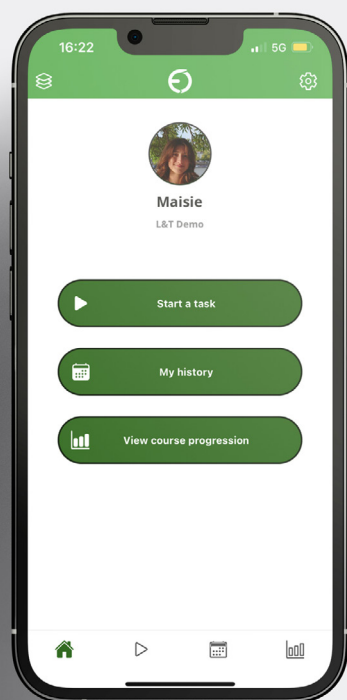


## WHAT'S INCLUDED

		EOSIM™ ELITE EO003	EOSIM™ INSTITUTION EO008	EOSIM™ INSTITUTION PLUS EO009
Box	eoSim Box Trainer (includes Camera and LED Light)	✓	✓	✓
Instruments	5mm Ratcheted Grasper	✓	✓	✓
	5mm Non-Ratcheted Grasper	✓	✓	✓
	5mm Scissors	✓	✓	✓
	5mm Knot Pusher	✓	✓	✓
	5mm Needle Holder	✓	✓	✓
Hardware	22 inch Monitor	×	✓	✓
	USB-C to HDMI Cable	×	✓	✓
	Lightning to HDMI Cable	×	✓	✓
	Height Adjustable Trolley	×	×	✓
SurgTrac Modules	SurgTrac Elite – 18 Tasks	✓	✓	✓

# SurgTrac™

SurgTrac™ is an integrated skills training platform designed by surgeons, for surgeons. Mirroring Kolb's experiential learning circle, SurgTrac offers a curriculum of skills, instrument tracking software, objective performance feedback and metrics synced to an online portfolio, all through your mobile device.



TM

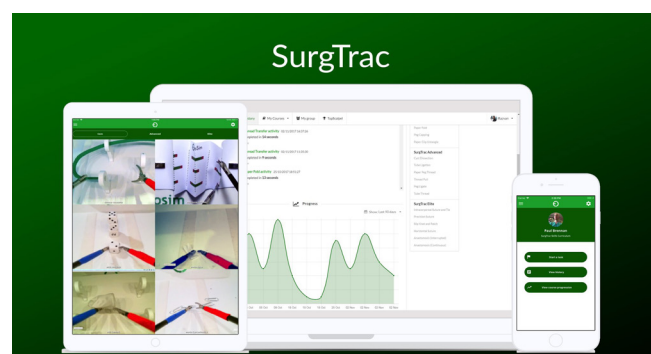
## QUALITIES

### KEY FEATURES

- Instrument tracking software records 20 metrics, generating instant quantitative performance feedback
- Additional formative, natural language feedback to support self-directed development
- Video recording of task attempts, which can be submitted for remote assessment by surgical trainers
- Evidence-backed by over 30 peer-reviewed validation studies
- Institutions can easily manage learner access and create groups using SurgTrac™ Manager

### VERSATILITY

- Tiered curricula for advancing skill levels
- Curated courses of tasks for surgical specialties
- Available on iOS, Android, Windows & MacOS
- Connect with your colleagues & classmates in groups
- Invite trainees & track their progress on group dashboards
- Assign assessors to grade task submissions and track development



## SKILLS

COURSE	TASKS	
CORE	Dice stacking	Precision cutting (paper)
	Paper fold	Thread transfer
	Peg capping	Paper clip untangle
ADVANCED	Tube ligation	Paper peg thread
	Thread pull	Peg ligate
	Cyst dissection	Tube thread
ELITE	Intracorporeal suture & tie	Slip knot & patch
	Anastomosis (continuous)	Anastomosis (interrupted)
	Precision suture	Horizontal suture

## FUNDAMENTALS OF LAPAROSCOPIC SURGERY™

Approved by the SAGES-ACS FLS Committee, the FLS trainer system is the only approved hands-on equipment for training and assessment.

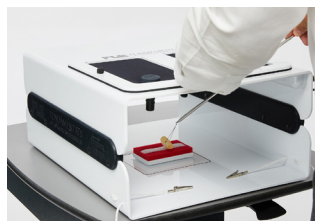
FLS is a joint educational offering of the American College of Surgeons (ACS) and the Society of American Gastrointestinal and Endoscopic Surgeons (SAGES). The FLS trainer system is appropriate for learning fundamental skills needed in many laparoscopic surgery specialties, including general surgery, gynaecology and urology.

The systems are complete with training box and TV camera alongside a range of tasks designed to develop the skills necessary to perform the fundamentals of laparoscopic surgery.



### QUALITIES

- Skin frame constructed from durable neoprene
- 2 pre-incised holes for the trocars
- Trainer systems come with a TV camera
- Trainer design allows for ambient light to enter the training area
- Overhead LED lighting strip



### SKILLS

- Laparoscopic surgery
- Tasks:
  - Peg transfer
  - Precision cutting
  - Ligating loop
  - Intra- and extra-corporeal knot tying



#### ■ FLS Trainer Box **50302**

Economical and portable laparoscopic trainer box

#### ■ FLS Trainer System **50304**

Incorporates all of the features of the FLS trainer box, plus a 19" television and Mobile SimCart

#### ■ FLS All-In-One Trainer System **50306**

Includes everything from the FLS trainer system, plus ligating loops, sutures & a set of FLS approved instruments



# Want to see our trainers in action?



Click on the Play icons on the product pages to watch a product video or head to the webpage.

# UNDERGRADUATE MEDICINE

Designed to meet the core training needs and essential skills required at undergraduate level in the UK today.

CaRE

8



MALE RECTAL EXAMINATION

16



ABDOMINAL EXAMINATION

10



BREAST EXAMINATION

14



FEMALE PELVIC EXAMINATION

12



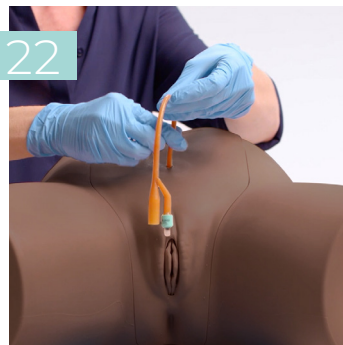
MALE PELVIC EXAMINATION

18



CATHETERISATION

22



BASIC SURGICAL SKILLS

46



VENEPUNCTURE

40



INJECTIONS

42



OTOLOGY &amp; OPHTHALMOLOGY

20



# ATLS

This range offers a cost effective solution to the simulation equipment needed for ATLS 11th Edition making it easy for training providers to deliver this course.

## CHEST TRAUMA MANAGEMENT

26



## TRUJUNCTIONAL

30



## CLEAN BLEED MAT

31



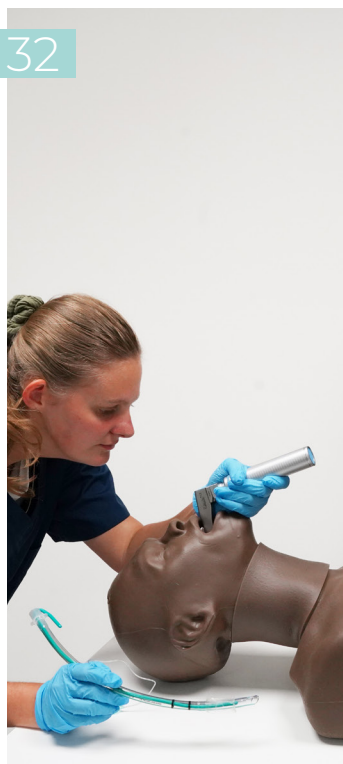
## AIRSIM DIFFICULT AIRWAY

34



## SMART AIRWAY

32



## AIRSIM COMBO X

33



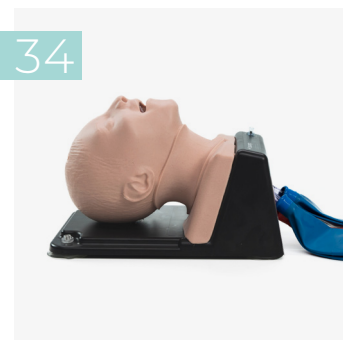
## SMART AIRWAY CHILD

32



## AIRSIM CHILD COMBO X

34





# NURSE TRAINING

Nursing is at the heart of healthcare and these products reflect the core simulation training needs required for undergraduate and postgraduate nursing in the UK today.

CLEAN BLEED MAT



PELVIC EXAMINATION



BREAST EXAMINATION



MALE RECTAL EXAMINATION



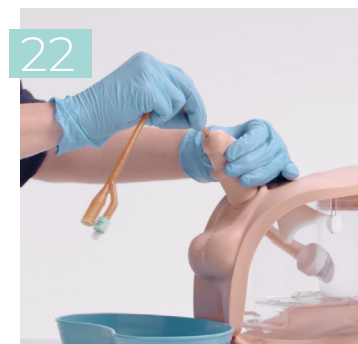
ABDOMINAL EXAMINATION



VENEPUNCTURE



CATHETERISATION



PATIENT CARE



CaRE



WOUND CARE



OTOLOGY &amp; OPHTHALMOLOGY



# PARAMEDIC TRAINING

From patient assessment and basic care in years 1 & 2, to more advanced skills in year 3, this range covers essential training elements required for training paramedics.

CLEAN BLEED MAT



31

ABDOMINAL EXAMINATION



10

VENEPUNCTURE ARM RANGE



40

CHEST TRAUMA MANAGEMENT



26

INJECTIONS



42

TRUWOUND



30

TRUTOURNIQUET



30

AIRWAY MANAGEMENT



32

ARTERIAL PUNCTURE WRIST



38

OBSTETRICS &amp; MIDWIFERY



52

TRAUMA MANAGEMENT



26

COLLES' FRACTURE



71



# OSCE TRAINING

It's important students feel confident taking the Objective Structured Clinical Examination. These products are designed to train and test clinical skill performance for the OSCE.

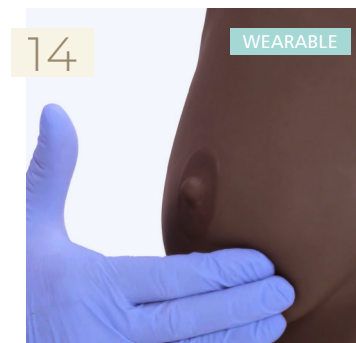
MALE RECTAL EXAMINATION



ABDOMINAL EXAMINATION



BREAST EXAMINATION



PELVIC EXAMINATION



CATHETERISATION



ARTERIAL PUNCTURE WRIST



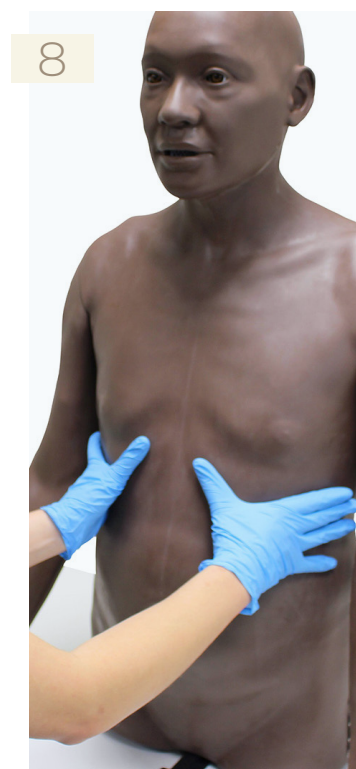
TUBE FEEDING



PATIENT CARE



CaRE



OPHTHALMOLOGY



LUMBAR PUNCTURE &amp; EPIDURAL

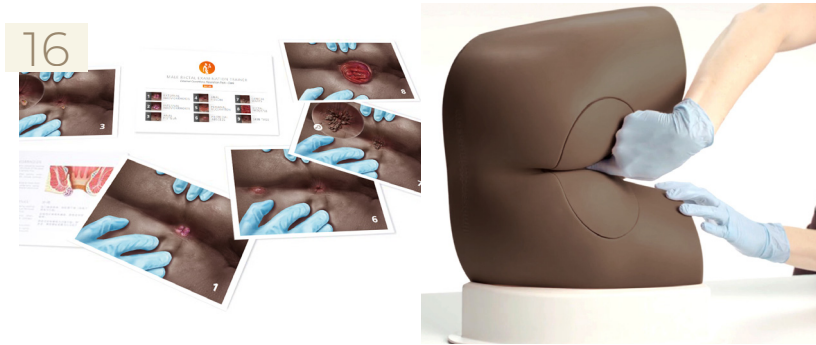




# PHYSICIAN ASSOCIATE

Spanning both paramedic and emergency medicine, our range of simulators includes both physical examination and procedural trainers.

MALE RECTAL EXAMINATION



FEMALE PELVIC EXAMINATION



ABDOMINAL EXAMINATION



MALE PELVIC EXAMINATION



BREAST EXAMINATION



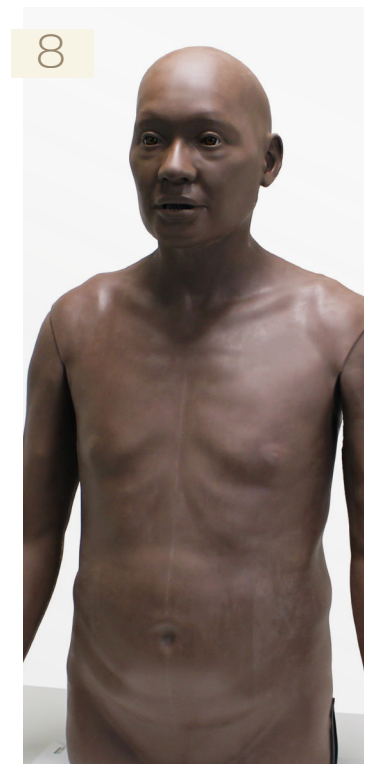
VENEPUNCTURE



CATHETERISATION



CaRE



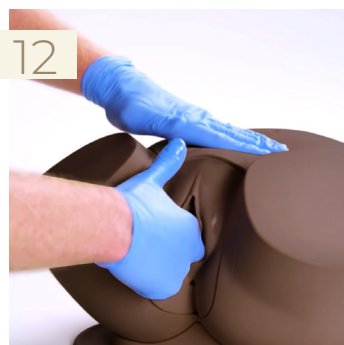
# ADVANCED PRACTICE

Upskilling and increasing scopes of work make this range an ideal training tool to ensure both competence and confidence.

ABDOMINAL EXAMINATION



FEMALE PELVIC EXAMINATION



BREAST EXAMINATION



MALE RECTAL EXAMINATION



MALE PELVIC EXAMINATION



OTOLOGY



CaRE



OPHTHALMOLOGY





# CLINICAL ULTRASOUND

For training in ultrasound guided procedures, the range is made of materials similar to human tissue, allowing trainees to practise advanced visualising or injecting techniques while using ultrasound imaging for accuracy.

SUPRAPUBIC CATHETERISATION



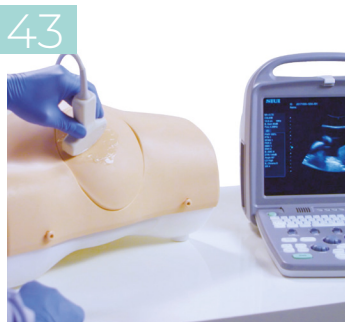
ULTRASOUND EPIDURAL



ARTERIAL PUNCTURE WRIST



PARACENTESIS TRAINER



CHEST TRAUMA MANAGEMENT



TRUCVC



SHOULDER - ULTRASOUND GUIDED



KNEE - ULTRASOUND CAPABILITY



ULTRASOUND GUIDED PICC



ULTRASOUND PERICARDIOCENTESIS

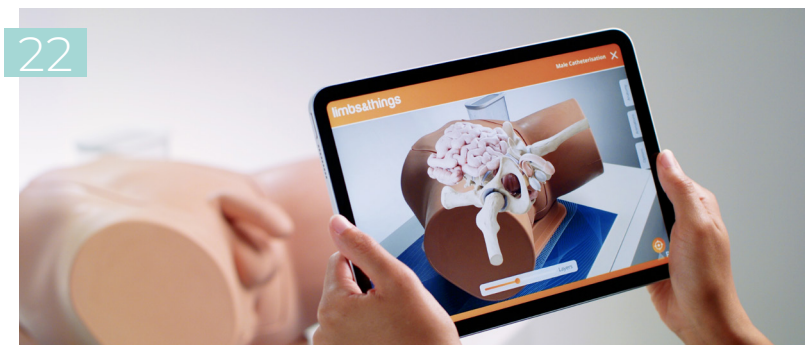




# AUGMENTED REALITY (AR)

AR bridges the knowledge gap between theory and practice by allowing users to interact with the trainer's anatomy on their smart device. Discover our compatible models below, or find out how AR enhances learning on Page 6.

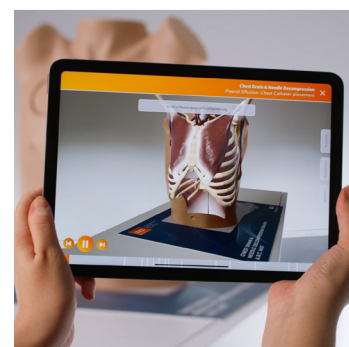
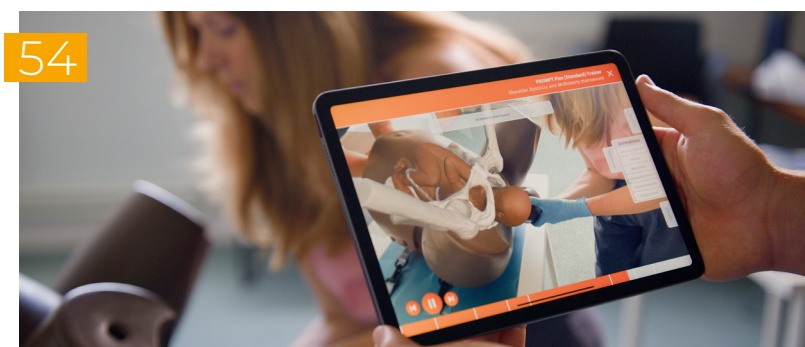
CATHETERISATION TRAINER



CHEST TRAUMA MANAGEMENT



PROMPT FLEX BIRTHING SIMULATOR



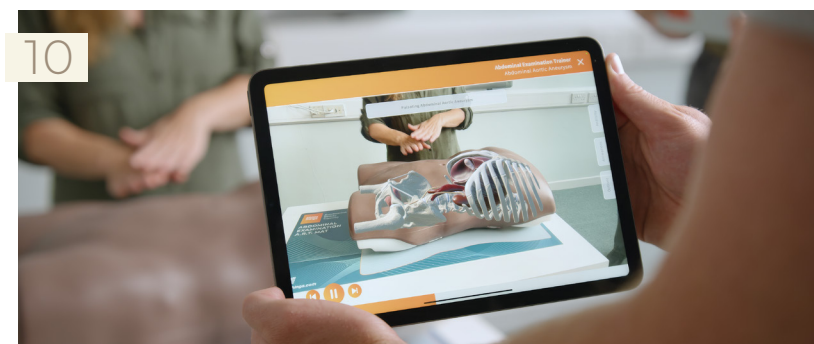
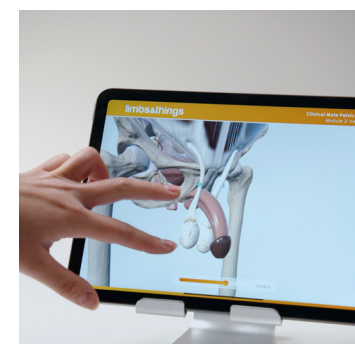
MALE PELVIC TRAINER



LUMBAR PUNCTURE &amp; EPIDURAL



ABDOMINAL EXAMINATION TRAINER



A	ABDOMINAL EXAMINATION TRAINER	10
	ACF PAD - VENEPUNCTURE	35
	ADVANCED CATHETERISATION TRAINER SET	23
	ADVANCED EPIDURAL & LUMBAR PUNCTURE MODEL	24
	ADVANCED VENEPUNCTURE ARM	40
	AIRWAY MANAGEMENT	
	AIRSIM ADVANCE X	33
	AIRSIM COMBO X	33
	AIRSIM CHILD COMBO X	34
	AIRSIM DIFFICULT AIRWAY	34
	SMART AIRWAY	32
	SMART AIRWAY CHILD	32
	TRUBABY X	65
	ANAL SPHINCTER REPAIR TRAINER	63
	ANNIE ARTERIAL INSUFFICIENCY LEG MODEL	73
	ARTERIAL PUNCTURE WRIST	38
	ASSISTED VAGINAL BIRTH MODULE (AVB) - PROMPT FLEX	57
	AUGMENTED REALITY	6

B	BASIC SURGICAL SKILLS	
	BSS DAY 1 KIT	46
	BSS DAY 2 KIT	46
	BSS LESION & CYST	46
	DOUBLE LAYER BOWEL	46
	KNOT TYING TRAINER	46
	SUTURE TUTOR PLUS™	47
	BIRTHING SIMULATOR - PROMPT FLEX - STANDARD	54
	BIRTHING SIMULATOR - PROMPT FLEX - ADVANCED	54
	BREAST	
	BREAST EXAMINATION TRAINER - ADVANCED	14
	BREAST EXAMINATION TRAINER - STANDARD	14
	ULTRASOUND GUIDED BREAST BIOPSY PHANTOM	15

C	CARDIOLOGY	
	CARDIOVASCULAR & RESPIRATORY EXAMINATION	8
	CATHETERISATION	
	ADVANCED TRAINER SET	23
	FEMALE CATHETERISATION TRAINER	22
	CATHETERISATION (CONTINUED)	
	MALE CATHETERISATION TRAINER	22
	STANDARD CATHETERISATION TRAINER SET	23
	SUPRAPUBIC CATHETERISATION INSERTION UNIT	22

C	CENTRAL LINE MANAGEMENT	
	TRUCVC	36
	ULTRASOUND CVC INSERTION SIMULATOR MK 3	36
	ULTRASOUND GUIDED PICC TRAINING SIMULATOR	37
	CHEST TRAUMA MANAGEMENT	
	CHEST DRAIN & NEEDLE DECOMPRESSION TRAINER	26
	SMART TRUMAN TRAUMA ADULT	28
	TRUMAN TRAUMA ADULT	28
	ULTRASOUND GUIDED PERICARDIOCENTESIS	29
	ULTRASOUND GUIDED THORACENTESIS SIMULATOR	29
	CERVICAL DILATATION & EFFACEMENT MODULE (CD&E)	56
	CLEAN BLEED™ MAT	31
	CLINICAL FEMALE PELVIC TRAINER (CFPT) - ADVANCED	13
	CLINICAL FEMALE PELVIC TRAINER (CFPT) - STANDARD	12
	CLINICAL MALE PELVIC TRAINER (CMPT) - ADVANCED	19
	CLINICAL MALE PELVIC TRAINER (CMPT) - STANDARD	18
	COLLES' FRACTURE REDUCTION TRAINER	71
	CURETTAGE, SNIP & SHAVE EXCISION PAD	50
	CUTDOWN PAD	42

D	DIGITAL EYE EXAMINATION TRAINER	20
	DOUBLE LAYER BOWEL	46

E	EAR EXAMINATION SIMULATOR II	21
	ELBOW FOR JOINT INJECTION	70
	ENHANCED CAESAREAN SECTION MODULE (ECSM)	58
	EOSIM™	74
	EPIDURAL & LUMBAR PUNCTURE MODEL (ADVANCED)	24
	EPISIOTOMY TRAINER	63
	EXTENDED ACF PAD - VENEPUNCTURE	35
	EYE EXAMINATION TRAINER	20

F	FEMALE CATHETERISATION TRAINER	22
	FEMALE EXAMINATION	
	BREAST EXAMINATION TRAINER - ADVANCED	14
	BREAST EXAMINATION TRAINER - STANDARD	14
	CLINICAL FEMALE PELVIC TRAINER (CFPT) - ADV	13
	CLINICAL FEMALE PELVIC TRAINER (CFPT) - STD	12
	ULTRASOUND GUIDED BREAST BIOPSY PHANTOM	15

F	FLS ALL-IN-ONE TRAINER SYSTEM	76
	FLS TRAINER BOX WITH TV CAMERA	76
	FLS TRAINER SYSTEM	76
	FOOT & ANKLE FOR JOINT INJECTION	70
	FREDDIE FISTULA™ SKILLS TRAINER	72

G	GYNAECOLOGY	
	SURGICAL FEMALE PELVIC TRAINER (SFPT)	61

H	HAND & WRIST INJECTION TRAINER	69
---	--------------------------------	----

I	INFANT HIP EXAM	64
	INGROWING TOENAIL TRAINER	48
	INJECTION TRAINER	42

J	JOINT INJECTION	
	ELBOW FOR JOINT INJECTION	70
	FOOT & ANKLE FOR JOINT INJECTION	70
	HAND & WRIST INJECTION TRAINER	69
	KNEE ASPIRATION & INJECTION TRAINER WITH ULTRASOUND CAPABILITY	68
	SHOULDER INJECTION TRAINER - PALPATION GUIDED	66
	SHOULDER INJECTION TRAINER - ULTRASOUND GUIDED	67

K	KNEE ASPIRATION & INJECTION TRAINER	68
	KNOT TYING TRAINER	46

L	LAPAROSCOPIC SURGERY	
	EOSIM™	74
	FLS ALL-IN-ONE TRAINER SYSTEM	76
	FLS TRAINER BOX WITH TV CAMERA	76
	FLS TRAINER SYSTEM	76
	SURGICAL FEMALE PELVIC TRAINER (SFPT)	61
	SURGRAC™	75
	LIPOMA PAD	49
	LUMBAR PUNCTURE & EPIDURAL	
	ADVANCED EPIDURAL & LUMBAR PUNCTURE MODEL	24
	LUMBAR PUNCTURE MODEL	24
ULTRASOUND EPIDURAL & LUMBAR PUNCTURE MODEL	24	

M	MALE CATHETERISATION TRAINER	22
	MALE EXAMINATION	
	CLINICAL MALE PELVIC TRAINER (CMPT) - ADV	19
	CLINICAL MALE PELVIC TRAINER (CMPT) - STD	18

M	MALE EXAMINATION	
	MALE RECTAL EXAMINATION TRAINER - ADVANCED	16
	MALE RECTAL EXAMINATION TRAINER - STANDARD	16
	MEDICAL FOOTCARE MODEL	73
	MEDIOLATERAL PERINEAL REPAIR TRAINER	62
	MIDLINE PERINEAL REPAIR TRAINER	62
	MINOR SURGERY	
	CURETTAGE, SNIP & SHAVE EXCISION PAD	30
	INGROWING TOENAIL TRAINER	48
	LIPOMA PAD	49
	PROFESSIONAL SKIN PAD MK 3	49
	SEBACEOUS CYST PAD	50
WOUND CLOSURE PAD	48	

O	OBSTETRICS & MIDWIFERY	
	ANAL SPHINCTER REPAIR TRAINER	63
	ASSISTED VAGINAL BIRTH MODULE (AVB)	57
	BIRTHING SIMULATOR - PROMPT FLEX - ADVANCED	54
	BIRTHING SIMULATOR - PROMPT FLEX - STANDARD	54
	CERVICAL DILATATION & EFFACEMENT MODULE (CD&E)	56
	ENHANCED CAESAREAN SECTION MODULE (ECSM)	58
	EPISIOTOMY TRAINER	63
	MEDIOLATERAL PERINEAL REPAIR TRAINER	62
	MIDLINE PERINEAL REPAIR TRAINER	62
	POSTPARTUM HAEMORRHAGE MODULE	59
	POSTPARTUM HAEMORRHAGE KIT - PROMPT FLEX	59
	OPHTHALMOLOGY	
	DIGITAL EYE EXAMINATION TRAINER	20
	EYE EXAMINATION SIMULATOR	20
	OTOLOGY	
	EAR EXAMINATION SIMULATOR II	21

P	PAEDIATRICS	
	AIRSIM CHILD COMBO X	34
	INFANT HIP EXAM	64
	PAEDIATRIC LUMBAR PUNCTURE SIMULATOR II	65
	SMART AIRWAY CHILD	32
	TRUBABY X	65
	TRUBABY X LITE	65
	PARACENTESIS TRAINER	43
	PAT PRESSURE ULCER STAGING MODEL	73



P	PATIENT CARE	
	PATIENT CARE SIMULATOR "CHERRY"	45
	PATIENT CARE SIMULATOR "YAYE"	44
	TUBE FEEDING SIMULATOR	42
	PELVIC TRAINERS	
	CLINICAL FEMALE PELVIC TRAINERS (CFPT)	11
	CLINICAL MALE PELVIC TRAINERS (CMPT)	18
	PERINEAL REPAIR & EPISIOTOMY	
	ANAL SPHINCTER REPAIR TRAINER	63
	EPISIOTOMY TRAINER	63
	POSTPARTUM HAEMORRHAGE MODULE - PROMPT FLEX	59
	POSTPARTUM HAEMORRHAGE KIT - PROMPT FLEX	59
	PRESSURE SORES SIMULATOR	72
	PROMPT FLEX BIRTHING SIMULATOR RANGE	52
	PROFESSIONAL SKIN PAD MK3	49

R	(MALE) RECTAL EXAMINATION TRAINER	16
---	-----------------------------------	----

S	SEBACEOUS CYST PAD	50
	SEYMOUR II WOUND CARE MODEL™	72
	SHOULDER INJECTION TRAINER - PALPATION GUIDED	66
	SHOULDER INJECTION TRAINER - ULTRASOUND GUIDED	67
	SMART AIRWAY	32
	SMART TRUMAN TRAUMA ADULT	28
	STAN STAGE IV PRESSURE INJURY MODEL™	73
	STANDARD CATHETERISATION TRAINER SET	23
	STANDARD VENEPUNCTURE ARM	40
	SUPRAPUBIC CATHETERISATION INSERTION UNIT	22
	SURGICAL FEMALE PELVIC TRAINER (SFPT)	61
	SURGTRAC™	75
	SUTURE TUTOR PLUS™ - HANDS-ON KIT	47

T	THREE VEIN PAD - VENEPUNCTURE	35
	TRUCVC	36
	TRUBABY X	65
	TRUBABY X LITE	65
	TRUIV BLOCK	37
	TRUJUNCTIONAL	30
	TRUMAN TRAUMA ADULT	28

T	TRUTOURNQUET	30
	TRUWOUND	30
	TUBE FEEDING SIMULATOR	42

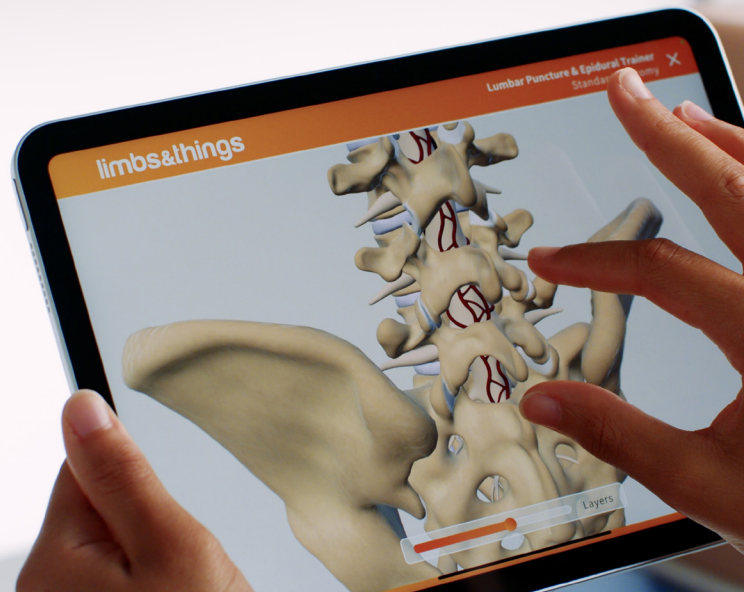
U	ULTRASOUND	
	ARTERIAL PUNCTURE WRIST	38
	CHEST DRAIN & NEEDLE DECOMPRESSION TRAINER	26
	KNEE ASPIRATION & INJECTION TRAINER	68
	PARACENTESIS TRAINER	43
	SHOULDER INJECTION TRAINER - ULTRASOUND GUIDED	67
	SUPRAPUBIC CATHETERISATION INSERTION UNIT	22
	TRUIV BLOCK	37
	ULTRASOUND CVC INSERTION SIMULATOR MK 3	36
	ULTRASOUND EPIDURAL & LUMBAR PUNCTURE MODEL	24
	ULTRASOUND GUIDED BREAST BIOPSY PHANTOM	15
	ULTRASOUND GUIDED PERICARDIOCENTESIS	29
	ULTRASOUND GUIDED PICC TRAINING SIMULATOR	37
	ULTRASOUND GUIDED THORACENTESIS SIMULATOR	29

V	VENEPUNCTURE	
	ACF PAD - VENEPUNCTURE	35
	ADVANCED VENEPUNCTURE ARM	40
	CUTDOWN PAD	42
	EXTENDED ACF PAD - VENEPUNCTURE	35
	STANDARD VENEPUNCTURE ARM	40
	THREE VEIN PAD - VENEPUNCTURE	35
	VINNIE VENOUS INSUFFICIENCY LEG MODEL	73

W	WOUND CARE	
	ANNIE ARTERIAL INSUFFICIENCY LEG MODEL	73
	FREDDIE FISTULA™ SKILLS TRAINER	72
	MEDICAL FOOTCARE MODEL	73
	PRESSURE SORES SIMULATOR	72
	SEYMOUR II WOUND CARE MODEL™	72
	STAN STAGE IV PRESSURE INJURY MODEL™	73
	PAT PRESSURE ULCER STAGING MODEL	73
	VINNIE VENOUS INSUFFICIENCY LEG MODEL	73
	WILMA WOUND FOOT™	72
	WOUND CLOSURE PAD	48

# Download our Augmented Reality app to start exploring now

Whether you have an AR compatible model or not, you can download the app for free and start discovering the interactive anatomy straight away.



Visit page 6 for more information on Augmented Reality

1

Visit  
[limbsandthings.com/augmentedreality](https://limbsandthings.com/augmentedreality)



Click to download the app

2

Select one of the app stores  
depending on the operating system  
of your device



3

Open the app,  
head to products and download  
the model you're interested in

Download

4

To use without a model,  
select **Interactive Anatomy**,  
and start exploring

Interactive Anatomy

i

Watch our video guide on our website for easy instructions  
[limbsandthings.com/how-to-use-ar](https://limbsandthings.com/how-to-use-ar)



# GENERAL INFORMATION



## Contacting us

- Our Customer Services team will be pleased to assist you with your enquiry or order  
**T: +44 (0) 117 311 0500**  
**E: [gbsales@limbsandthings.com](mailto:gbsales@limbsandthings.com)**
- Please quote product numbers & descriptions wherever possible



## Ordering

- All orders should be confirmed in writing (by email or post)
- All orders will be acknowledged in 48 hours
- VAT, where applicable, is charged at the prevailing UK rate
- Our Terms of Payment & Conditions of Sale can be viewed on [limbsandthings.com](http://limbsandthings.com) or requested from Customer Services



## Product changes

As we have a policy of continual product improvement, the specification of products may occasionally vary from those shown in the catalogue.



## Warranty

The Limbs & Things products featured in this catalogue are produced with the utmost care and are covered by our Guarantee. This applies to all models that have been used according to the user guide supplied and covers functionality and durability. Please see full details on [limbsandthings.com/uk/terms-conditions](http://limbsandthings.com/uk/terms-conditions)

### Limbs & Things

Sussex Street, St. Philips,  
Bristol, BS2 0RA, UK  
Registration No: 2532281  
Main Line: +44 (0)117 311 0500  
Web: [www.limbsandthings.com](http://www.limbsandthings.com)  
Email: [gbsales@limbsandthings.com](mailto:gbsales@limbsandthings.com)

### Patents granted

2277826: UK • 5775916: USA •  
0990227: Europe, UK, Germany, Spain,  
France, Italy, Netherlands • 81174/98:  
Australia • 1023832: Hong Kong •  
US6336812: USA •  
98806331.x: China • 5-512288: Japan •  
2 293 585: Canada

### Patents applied for:

11-503978: Japan • 0215051.4: UK

© 2026 Limbs & Things Limited. All rights reserved. No part of this publication may be reproduced, stored, transmitted or disseminated, in any form, or by any means, without prior written permission from Limbs & Things.

All information correct at time of going to press.





#### **UK (Head Office)**

00 44 (0)117 311 0500

[gbsales@limbsandthings.com](mailto:gbsales@limbsandthings.com)

#### **USA & Canada**

00 1-912-629-0357

[customerservice@limbsandthings.com](mailto:customerservice@limbsandthings.com)

#### **Australia & New Zealand**

00 61 3 9708 6511

[aus.sales@limbsandthings.com](mailto:aus.sales@limbsandthings.com)

#### **Sweden**

00 72 730 79 00

[order.waldemarlarsson@gmail.com](mailto:order.waldemarlarsson@gmail.com)

#### **Distributed Regions**

A global network of distributors supply our products to over 70 countries

**[limbsandthings.com](http://limbsandthings.com)**



FM 818255