



CATALOG 2026

SINCE 1990





Learning has never been more lifelike

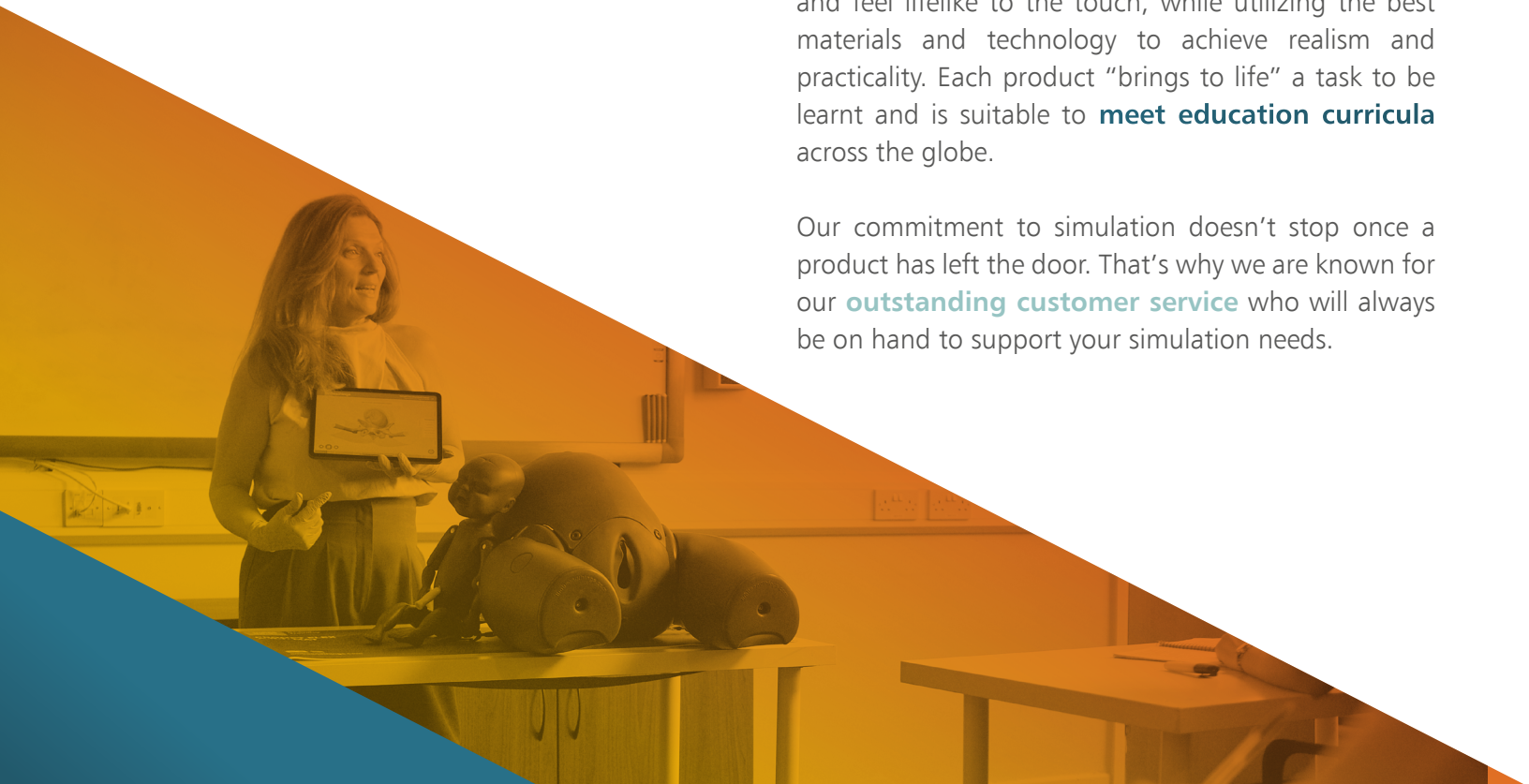
Limbs & Things was founded after Medical Artist Margot Cooper discovered a gap in the learning journey of medical students who jumped straight from theory into practicing on animal flesh or patients. The need for a **safe and repeatable training** medium was evident, and so the vision for Limbs & Things was created.

In 1990, Limbs & Things was born from a kitchen top in Bristol, England. Now a global business with offices in USA, Australia, and Sweden, the **family-owned** company still holds the same values and is proud to be supporting the learning of competent and confident clinicians around the world.

Our products are still **designed and manufactured in Bristol** before being exported to **70 countries worldwide**. Limbs & Things' committed team of experts collaborate with **medical leaders** to carefully create each groundbreaking innovation to achieve our mission.

Investing heavily in **research and development** ensures our models accurately replicate anatomy and feel lifelike to the touch, while utilizing the best materials and technology to achieve realism and practicality. Each product "brings to life" a task to be learnt and is suitable to **meet education curricula** across the globe.

Our commitment to simulation doesn't stop once a product has left the door. That's why we are known for our **outstanding customer service** who will always be on hand to support your simulation needs.





“

Greetings from Limbs & Things,

We are pleased to feature some more results from the groundbreaking effort of all our talented members of staff as seen in our new Arterial Puncture Wrist model highlighted in this catalog.

Limbs & Things was founded 35 years ago, but it feels like it was just yesterday when the expression was ‘see one, do one, teach one’.

We feel proudly responsible for enabling medical trainees and practitioners to gain important skills and understanding of practical medical procedures, through ‘hands on’ use of the models, and we continue to strive for advancements in training through technology such as our Augmented Reality range.

Margot Cooper

Limbs & Things President

”





CONTENTS



WHAT'S NEW

NEWEST UPDATES FROM LIMBS & THINGS 5

PHYSICAL EXAMINATION

AUGMENTED REALITY (AR)	6
GENERAL PHYSICAL EXAMINATION	8
AUSCULTATION & CARDIOLOGY	9
ABDOMINAL EXAMINATION	10
FEMALE EXAMINATION	12
MALE EXAMINATION	16
OPHTHALMOLOGY	20
OTOLOGY	21

SPECIALIST SKILLS

BASIC SURGICAL SKILLS	46
MINOR SURGERY	48
OBSTETRICS & MIDWIFERY	52 & 62
GYNECOLOGY	52
PEDIATRICS	64
JOINT INJECTION	68
WOUND CARE	72
LAPAROSCOPIC SURGERY	74

PROCEDURAL SKILLS

CATHETERIZATION	22
DIAGNOSTIC PROCEDURES	24
CHEST TRAUMA MANAGEMENT	26
TRAUMA MANAGEMENT	28
AIRWAY MANAGEMENT	32
VENIPUNCTURE (PADS)	35
CENTRAL LINE MANAGEMENT	36
ARTERIAL PUNCTURE	38
VENIPUNCTURE	40
VASCULAR ACCESS	43
INJECTION TECHNIQUE	42
PATIENT CARE	42 & 44
PARACENTESIS	43

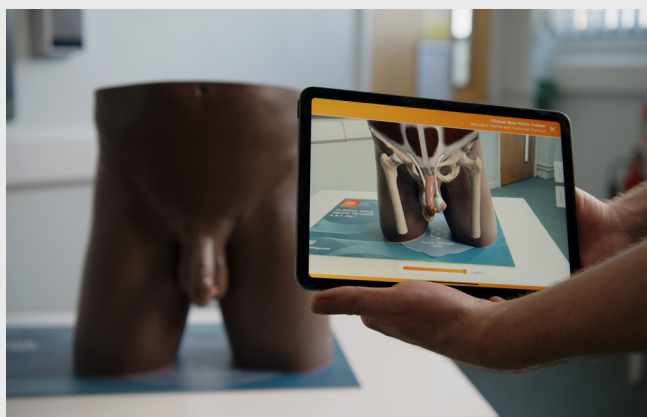
RANGES

UNDERGRADUATE MEDICINE	79
NURSE TRAINING	80
POCUS	81
ATLS	82
EMS	83
OSCE TRAINING	84
PHYSICIAN ASSISTANT	85
AUGMENTED REALITY (AR)	86

NEW Arterial Puncture Wrist

Designed for standardized and repeatable training, the Arterial Puncture Wrist supports confident performance at each stage of blood gas sampling, including line placement and using ultrasound to locate and access the artery.

Discover more on page 35.



Clinical Male Pelvic Trainer (CMPT) with Augmented Reality

The CMPT now includes Augmented Reality, allowing trainees to interact with the model's internal anatomy on their smart device. Increase understanding of internal pathologies and visualize underlying conditions.

Discover more on page 18.





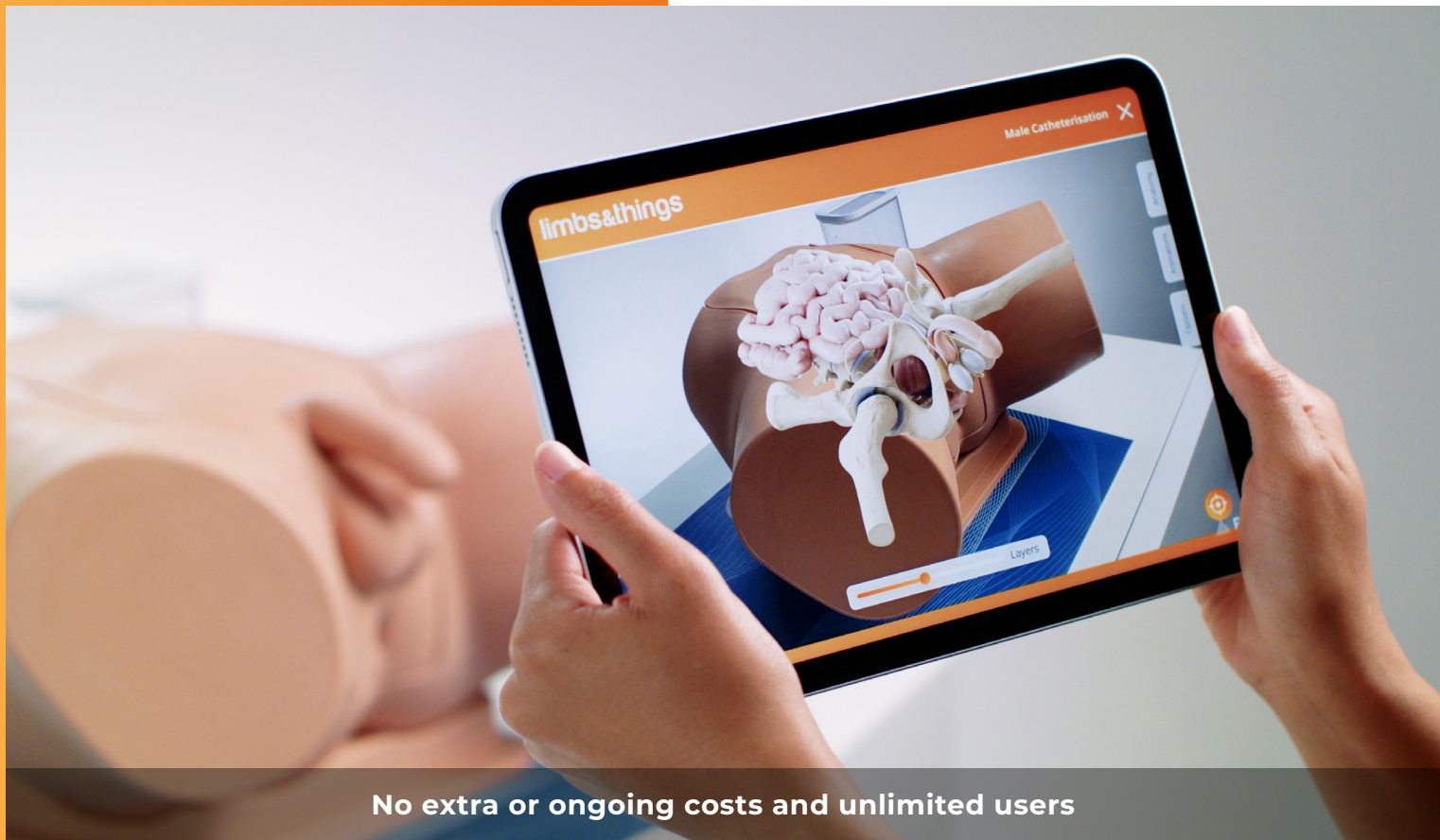
AUGMENTED REALITY

Interact with your trainer's internal anatomy on your smart device.

Add Augmented Reality to your training sessions.

By allowing learners to visualize anatomy, Augmented Reality (AR) bridges the knowledge gap between theory and practice.

AR makes engaging lessons easy. Multiple students can learn simultaneously using the app, while others get hands on with the trainer.



No extra or ongoing costs and unlimited users



With the trainer in class

Learners can use their own devices to view the internal anatomy



During independent study

Outside of class, students can continue learning using the same materials

AR unlocks different ways to learn

Keep the whole class engaged during training sessions

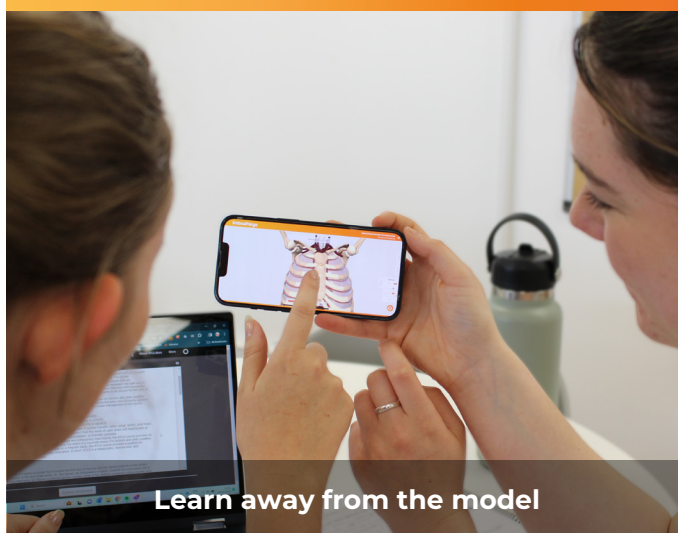


Combine with hands on training



Multiple students at once

Continue learning outside the classroom



Learn away from the model



Study with the same materials used in class

FEATURES

- Interact with your trainer's internal anatomy
- Visualize procedures with animations
- Explore different pathological presentations

VERSATILITY

- Run engaging and memorable lessons
- Multiple students learning at once
- Continued learning away from the model

SPECIFICATIONS

- Included with compatible models
- No extra or ongoing costs
- Unlimited users



Find out more at limbsandthings.com

Visit the back page of the catalog to download the AR app and start exploring now

CARDIOVASCULAR AND RESPIRATORY EXAMINATION (CaRE)

91000

91100



The CaRE (Cardiovascular and Respiratory Examination) Trainer teaches the key skills needed to carry out a cardiovascular or respiratory examination.

The CaRE Trainer has lifelike chest movement, apex beat, pulses, thrills & heaves. Along with 23 heart sound profiles and 10 lung sounds that can be listened to via the LimbPAD.

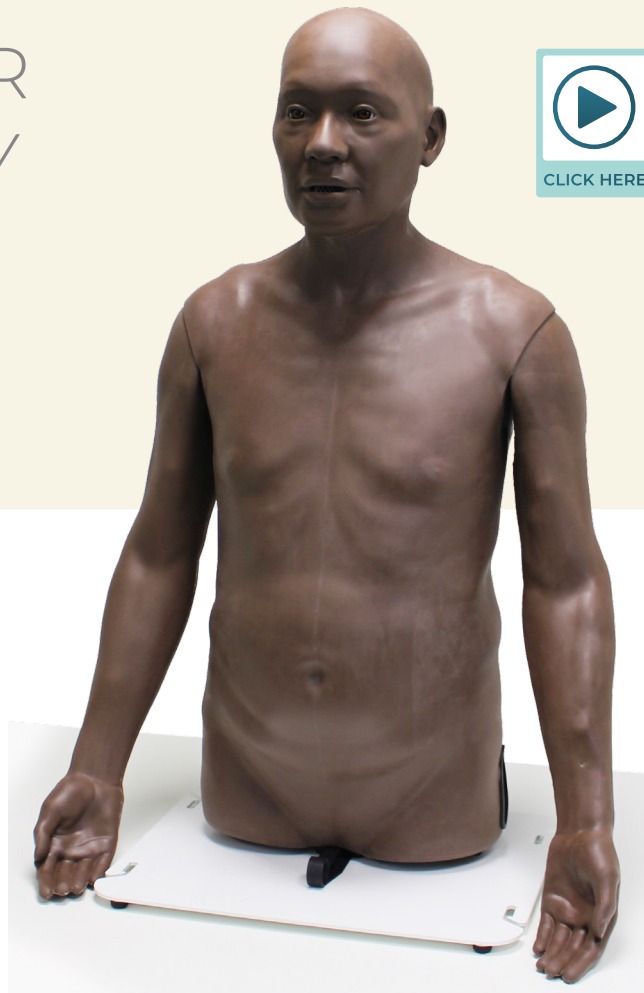
CaRE includes 31 clinical cases that range from common to complex pathologies. The clinical cases showcase the **Patented** technology with the pulses, lung & heart sounds, mouth sounds and chest movement all synchronizing together. These features synchronizing together allows the model to realistically represent a real patient.

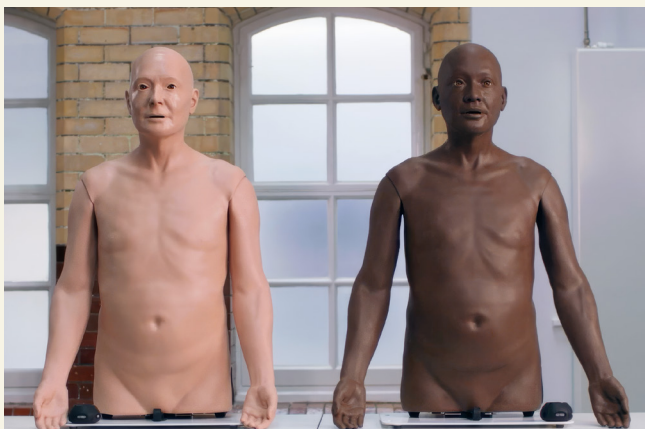
ANATOMY

- Anatomically correct auscultation & palpation sites
- Representative of a 55-65 year-old
- Attachable breasts with realistic feel
- Trachea with jugular notch
- Articulating arms

SKILLS

- Auscultation
- Palpation
- General patient inspection
- Clinical examination skills
- Diagnostics skills
- Tissue management





QUALITIES

KEY FEATURES

Pulses

- Realistic radial, femoral & carotid pulses with 6 different characteristics available at rates from 30 to 170 BPM

Apex beats

- Apex beats in both the normal & displaced location at varying pulse rates

Heaves

- Visible & palpable heaves

Thrills

- Palpable thrills over the 4 heart valves

Trachea

- Realistic feel of trachea & larynx with the ability to displace the trachea to the left & right

Auscultation

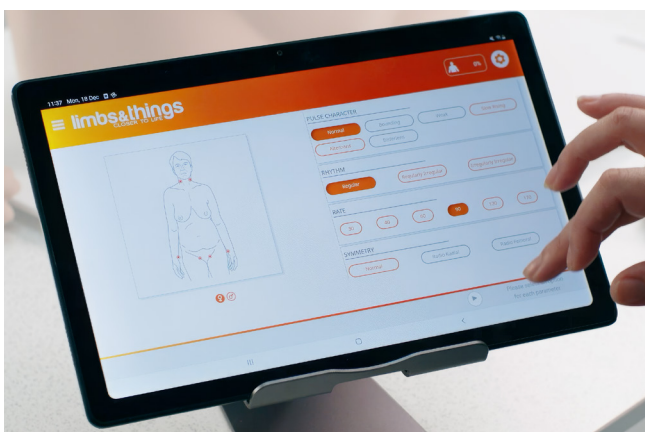
- Heart & lung sounds across chest & back
- 23 individual heart sounds
- Each heart sound includes 4 heart valve locations (aortic pulmonary, tricuspid & mitral valves)
- 10 individual lung sounds

Breathing

- Visible breathing with realistic symmetrical & asymmetrical chest rise & fall at variable rates, patterns, & depth.
- Realistic palpation of moving chest
- Mouth sounds

VERSATILITY

- Can be used upright, 45° or supine.
- LimbPAD can be connected to a speaker to play sounds out loud.
- Can be used in a classroom or clinical setting



WHAT'S INCLUDED

CaRE Torso
LimbPAD
Attachable Breasts
Base & Straps
Power Cord
USB C Cable

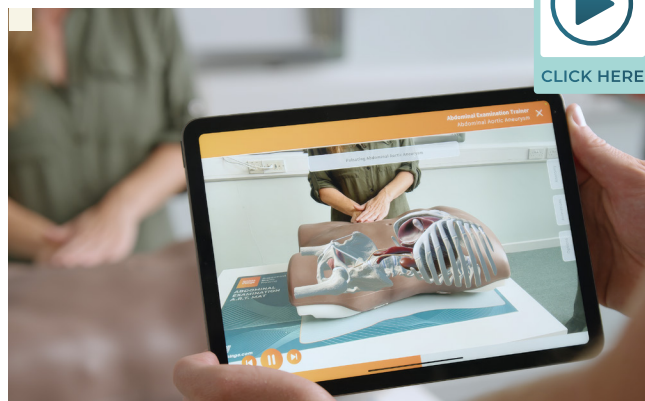
Abdominal Examination Trainer

60000

60054

An anatomically accurate adult torso, used to teach and practice the palpation, auscultation and percussion elements of abdominal or gastrointestinal (GI) examination.

With interchangeable organs of varying sizes, and an integrated MP3 player providing realistic sounds, the trainer provides the ability to recognize and differentiate a range of abnormal organs and pathologies.



SKILLS

- Familiarity with the abdominal regions & underlying anatomy
- Practice in abdominal palpation, auscultation & percussion
- Ability to differentiate normal from abnormal anatomy
- Identification of ascites, specifically shifting dullness & fluid thrill
- Identification of gaseous distension & bowel obstruction
- Ballotment of kidneys
- Professional-to-patient communication
- Increased understanding of internal anatomy & the effects of pathologies with AR



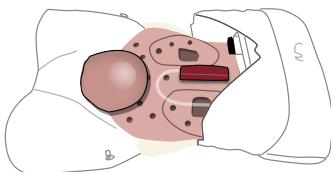
INCLUDES AUGMENTED REALITY

Discover the benefits on page 6

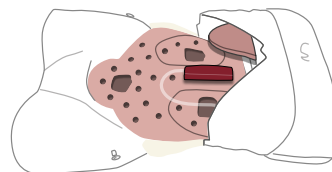
- No ongoing costs and unlimited users
- Bridge the learning gap between theory and practice
- Interact with internal structures to build understanding
- Visualize both male and female anatomy
- Understand organ and pathology presentations
- Multiple students learning at once
- Materials to learn with outside of the classroom

EXAMPLES OF SET UP FOR SCENARIOS

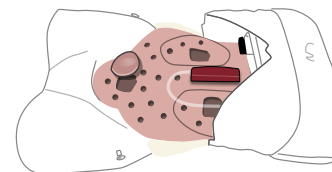
ACUTE URINARY
RETENTION - BLADDER



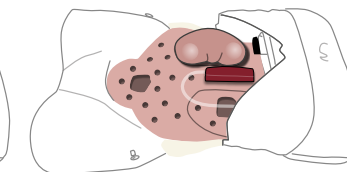
SLIGHTLY ENLARGED
LIVER



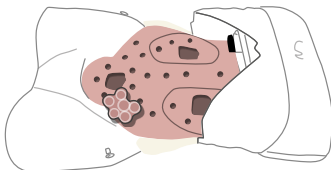
OVARIAN CYST - SMOOTH
SOFT MASS



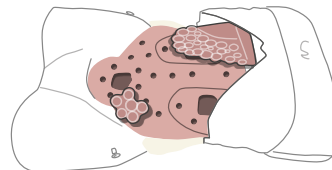
ENLARGED KIDNEY



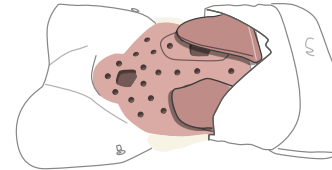
CARCINOMA ON MASS
IN LEFT ILIAC FOSSA



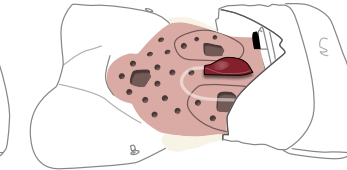
CARCINOMA WITH
LIVER METASTASIS

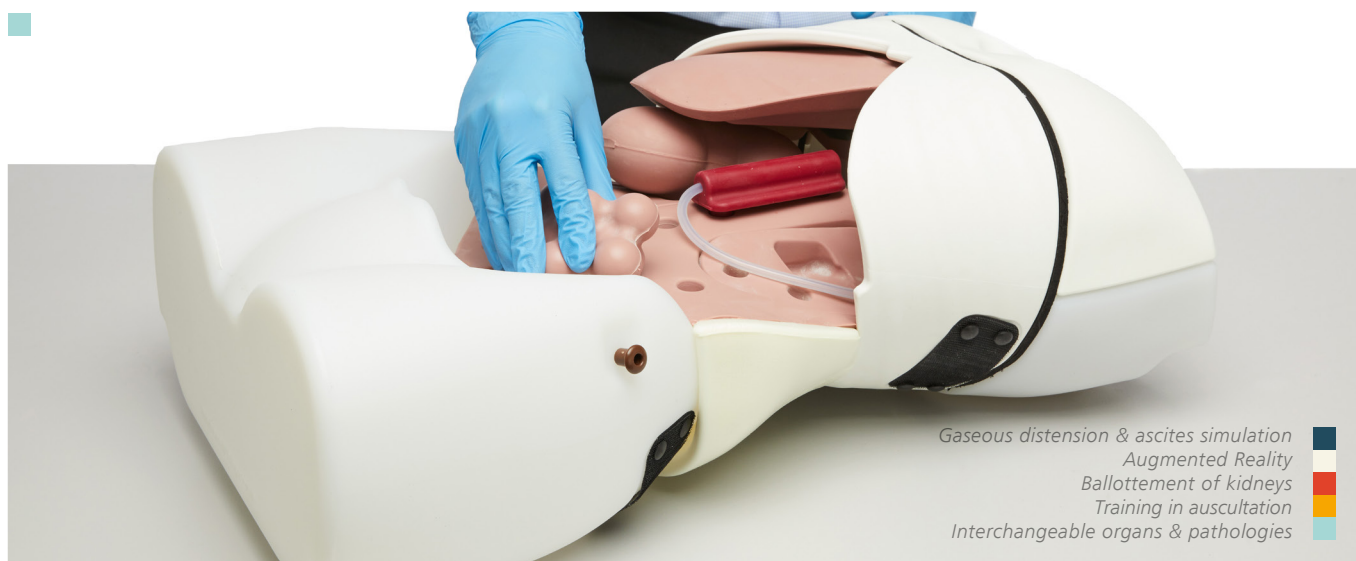


LYMPHOMA



AORTIC ANEURYSM





Gaseous distension & ascites simulation
 Augmented Reality
 Ballottement of kidneys
 Training in auscultation
 Interchangeable organs & pathologies

QUALITIES

REALISM

- Organs feel realistic on palpation & respond appropriately to percussion
- Lifelike quality of abdominal skin accommodates stretching for gaseous distension & ascites simulation
- Realistic ballottement of enlarged kidney

VERSATILITY

- Abdominal skin is simple to remove, allowing quick & easy changeover of organs
- Suitable for both bench top use & hybrid use with standardized patient
- Model can be rolled onto side for examination of ascites & shifting dullness

KEY FEATURES

- Interchangeable organs & pathologies of varying sizes can be quickly & easily inserted into the abdomen
- Trainer or standardized patient can vary respiratory movement of liver & spleen
- Integral amplifier & surface mounted MP3 player allow training in auscultation of normal & high-pitched or obstructed bowel sounds, renal & aortic bruits in variable locations
- Volume of bowel sounds can be adjusted and MP3 player allows for additional sounds to be loaded
- Distension set allows for the following:
 - Realistic checking for ascites using percussion, shifting dullness or fluid thrill technique
 - Simulation of bowel obstruction on percussion & auscultation
- Pulse bulb allows simulation of normal & aneurysmal aortic pulse

SAFETY

- Latex free

CLEANING & CARE

- Skin surface is washable using soap & water

ANATOMY

- Torso featuring abdomen, pelvis & lower part of thorax
- Bony landmarks include ribs, costal margin, xiphisternum, pubic crest & anterior superior iliac spines
- 3 Livers: slightly enlarged, enlarged with smooth edge & enlarged with irregular edge
- 2 Spleens: slightly enlarged & markedly enlarged
- 2 Enlarged Kidneys
- Distended Bladder
- 2 Aortas: normal & aneurysmal
- Set of 6 Abdominal Pathologies includes:
 - 4 Smooth masses: 2 sizes, each with hard & soft version
 - 2 Irregular hard masses
- Distension Set includes:
 - Ascites bag
 - Gaseous distension bag, pump & foam insert
- Simplified representation of lower thoracic & lumbar spine

WHAT'S INCLUDED

Abdominal Examination Base Unit
 Abdominal Examination Skin
 Abdominal Examination Rectus Bag
 Abdominal Examination Organ Locator
 Abdominal Wall
 Abdominal Examination Livers (Set of 3)
 Abdominal Examination Spleens (Set of 2)
 Abdominal Examination Kidneys (x2)
 Abdominal Examination Bladder
 Abdominal Examination Pathologies (Set of 6)
 Abdominal Examination Aortas (Set of 2)
 Abdominal Examination - Distension Set
 International 5V DC Power Supply
 AA Batteries (x4)
 Carry Case (x2)
 Augmented Reality Mat

Clinical Female Pelvic Trainer (CFPT)

STANDARD

60900

60930



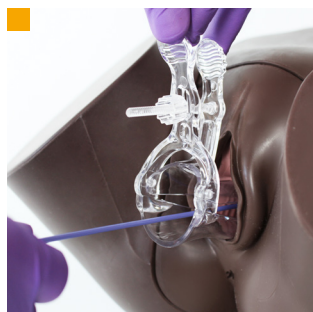
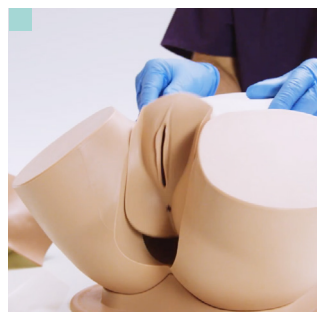
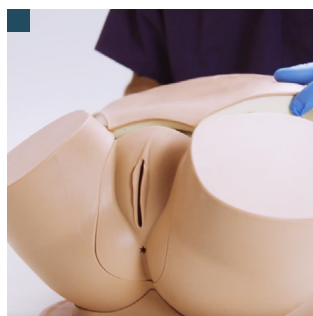
The CFPT is an anatomically accurate and tactile representation of the female pelvis. It is the ideal platform for hands-on examination as well as diagnosis of female conditions and minor pathologies. It can be used for many levels of training from undergraduate onwards, as well as in family medicine.



Validated in the
International Journal of Gynecology and Obstetrics.
Volume 124, pp. 270-3, 2014.

SKILLS

- Recognition of perineal & pelvic anatomy including bony landmarks
- Digital vaginal examination
- Bi-manual examination
- Cervical smear procedure (including use of speculum)
- Digital rectal examination
- Professional-to-patient communication



Bi-manual examination
... allowing uterine module
to be lifted out

Abdominal wall lifts off...
Use of speculum
and cervical broom

QUALITIES

ANATOMY

- Abdomen, pelvis & genitalia
- Vagina, cervix, anus & lower bowel
- Advanced model comes with interchangeable uterine modules with different complications
- Modules:
 - Normal - Nulliparous Cervix
 - Large Fibroid - Nulliparous Ectropion Cervix
 - Small Fibroid - Nulliparous Polyp Cervix
 - Ovarian Cyst - Multiparous Cervix
 - Retroverted - Multiparous Cervix
 - 10-12 Weeks Pregnant
 - 14-16 Weeks Pregnant

REALISM

- Abdominal wall with fat layer makes palpation realistic
- Labia can be parted realistically
- Each uterus is presented at a realistic anatomical angle

KEY FEATURES

- Partial thighs aid anatomical orientation
- Soft and strong perineum and labia

VERSATILITY

- Modules can be changed quickly and easily

SAFETY

- Latex free

CLEANING & CARE

- Skin surface is washable using soap & water

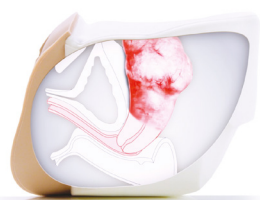
ADVANCED

60905

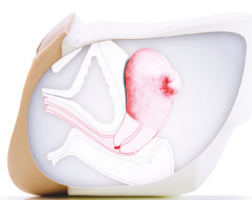
60935



60920 | 60937

MODULE 1
Normal - Nulliparous Cervix

60921 | 60938

MODULE 2
Large Fibroid - Nulliparous Ectropion Cervix

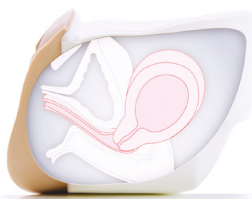
60922 | 60939

MODULE 3
Small Fibroid - Nulliparous Polyp Cervix

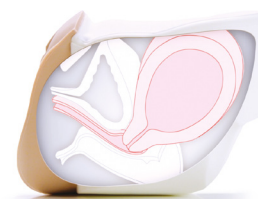
60923 | 60940

MODULE 4
Ovarian Cyst - Multiparous Cervix

60924 | 60941

MODULE 5
Retroverted - Multiparous Cervix

60925 | 60942

MODULE 6
10-12 Weeks Pregnant

60926 | 60943

MODULE 7
14-16 Weeks Pregnant

WHAT'S INCLUDED

STANDARD

ADVANCED

CFPT Abdominal Insert	✓	✓
CFPT Module 1: Normal - Nulliparous Cervix	✓	✓
CFPT Module 2: Large Fibroid - Nulliparous Ectropion Cervix	✗	✓
CFPT Module 3: Small Fibroid - Nulliparous Polyp Cervix	✗	✓
CFPT Module 4: Ovarian Cyst - Multiparous Cervix	✗	✓
CFPT Module 5: Retroverted - Multiparous Cervix	✗	✓
CFPT Module 6: 10-12 Weeks Pregnant	✗	✓
CFPT Module 7: 14-16 Weeks Pregnant	✗	✓
Lower Torso	✓	✓
Base	✓	✓
Tube of Aqueous Gel	✓	✓
Carry Case	✓	✓(x2)

Breast Examination Trainer - Advanced & Standard

ADVANCED

40201

41201

STANDARD

40200

41200



Our Breast Examination Trainer provides a highly realistic learning platform for acquiring the skills required to perform Clinical Breast Examination (CBE).

Featuring 6 readily interchangeable and multi-positional pathologies, providing healthcare professionals with the tools to identify various complications and pathologies, including carcinomas, cysts, fibrocystic disease and fibroadenoma.



Both *standardized patient* and *Bench Top* training can be used in alignment with healthcare professionals promoting best practice techniques to trainees and patients, or for any undergraduate programs running.



This product was developed in close collaboration with leading clinicians:

- Mr. Peter Donnelly, Torbay Hospital, UK
- Clinical Skills Resources Center, University of Liverpool, UK
- Clinical Practice Center, St James's University Hospital, Leeds, UK

QUALITIES

ANATOMY

- Realistic soft tissue & breast anatomy
- Pathologies supplied: carcinomas (2cm, 3cm, 5cm), cyst, fibrocystic disease, fibroadenoma

REALISM

- Soft tissue looks & feels realistic
- Clavicular & axilla pads for accurate lymph node placement

KEY FEATURES

- Pathologies can be placed in various location points & are easily changeable
- Dual purpose product: bench top & standardized patient
- Hard torso available for bench top use

VERSATILITY

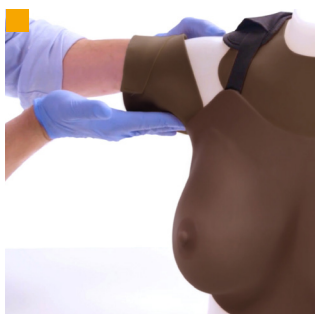
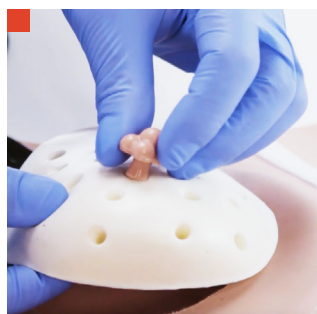
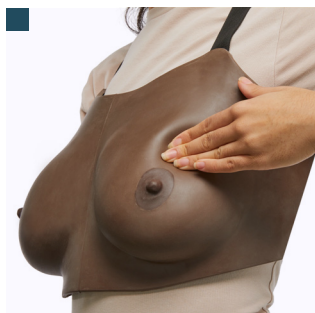
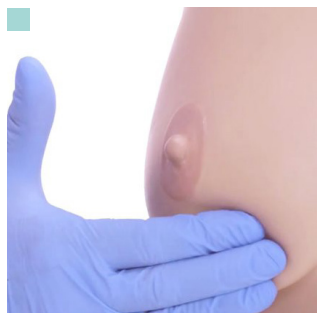
- Comfortable to wear for long periods of time during OSCEs & assessments

SAFETY

- Latex free

CLEANING & CARE

- Skin surface is washable using soap & water



- Soft tissue looks & feels realistic
- Self Breast Examination training
- Pathologies fit securely into supports
- Clavicular & axilla pads for accurate lymph node placement

SKILLS

- Clinical Breast Examination (CBE)
- Self-Breast Examination (SBE)
- Identification of anatomical landmarks
- Identification of lymph nodes (axillary, supra & infraclavicular)
- Diagnosis of pathologies
- Professional-to-patient communication

OPTIONAL EXTRAS

40209 Medium Carry Case

WHAT'S INCLUDED

	ADVANCED	STANDARD
Wearable Examination Breasts	✓	✓
Pathologies	✓	✓
Breast Examination Inserts	✓	✓
Breast Pathologies Supports	✓	✓
Breast Back Plates	✓	✓
Breast Examination Torso	✓	✓
Lymph Node Pads & Lymph Nodes	✓	×

Ultrasound-Guided Breast Biopsy Phantom

KKUS-9

Develop ultrasound-led needle biopsy skills step-by-step with these 2 breast models. Trainees can develop ultrasound image reading skills and practice accurate needle biopsy. Start with developing coordination and visualization on the transparent breast, and progress to full needle biopsy procedure on the opaque breast model.

SKILLS

- Visualization of the targets and needle journey
- Tissue sampling under ultrasound guidance
- Needle biopsy under ultrasound guidance
 - Fine needle aspiration biopsy
 - Core needle biopsy
 - Mammotome biopsy
- Hand-eye coordination



QUALITIES

KEY FEATURES

- Targets are embedded in 3 layers to provide opportunities of working with a variety of needle paths
- Breast phantom tissue accurately represents softness and resistance of the mammary gland
- Excellent ultrasound image quality
- Targets are colored to confirm successful sampling

Male Rectal Examination Trainer - Standard & Advanced

STANDARD

60170

60186

ADVANCED

60171

60187



The Rectal Examination Trainer offers realistic, repeatable training in the core skill of digital rectal or PR examination.

Both models include a contractible anal sphincter, allowing for anal tone assessment and a fecal impaction clip in module.



The **Standard** model focuses on learning core rectal nursing procedures and excludes any pathologies.

The **Advanced** model comes with a range of prostates and 2 perineums, allowing trainees to become familiar with normal and abnormal findings and acquire key diagnostic skills. External ano-rectal illustrations are ideal for incorporation into scenarios and **OSCE** assessments.

SKILLS

- Digital examination of the anus, rectum & prostate
- Assessment of anal tone
- Identification of impacted fecal matter in the rectum
- Identification of external anorectal conditions**
- Professional-to-patient communication
- Insertion of rectal medication (micro enemas, suppositories)

QUALITIES

** Advanced model

ANATOMY

- *Improved model enhances the realistic feel & durability of trainer
- Buttocks, anus, rectum, prostate & perineum
- Pathological perineum – with polyp & rectal cancer**
- 4 abnormal prostates**:
 - Benign unilateral enlarged - Benign bilateral enlarged
 - Unilateral carcinoma - Bilateral carcinoma

REALISM

- Soft, partible buttocks
- Realistic anus with resting tone & ability to contract

KEY FEATURES

- Interchangeable prostates can be quickly & easily inserted, out of sight of the trainee**
- Addition of impacted fecal matter allows trainees to recognize & distinguish this common finding
- Simulation of sphincter contraction allows trainees to assess anal tone
- Left lateral positioning
- Teaching aid pack featuring high-quality illustrations of nine external anal conditions**

VERSATILITY

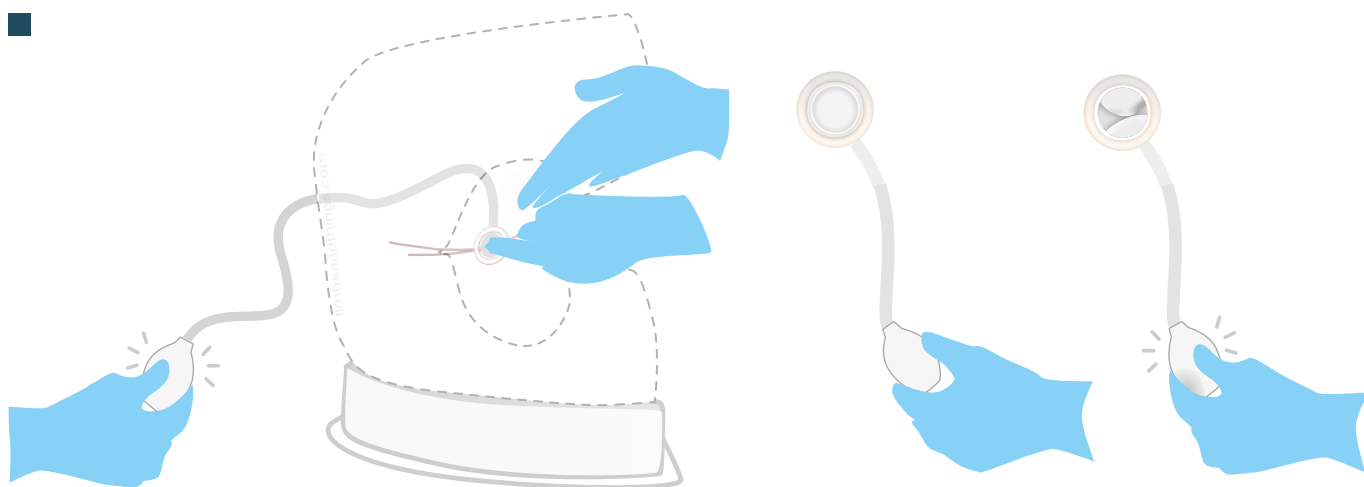
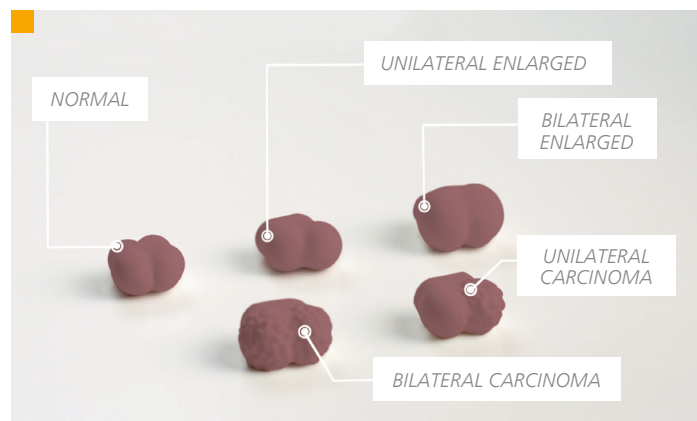
- Trainer can also be presented in 'semi-standing' position using the optional **Standing Position Stand (60172)**

SAFETY

- Latex free

CLEANING & CARE

- Skin surface is washable using soap & water



■ External conditions illustration pack
■ Range of prostates
■ Anal tone assessment

WHAT'S INCLUDED

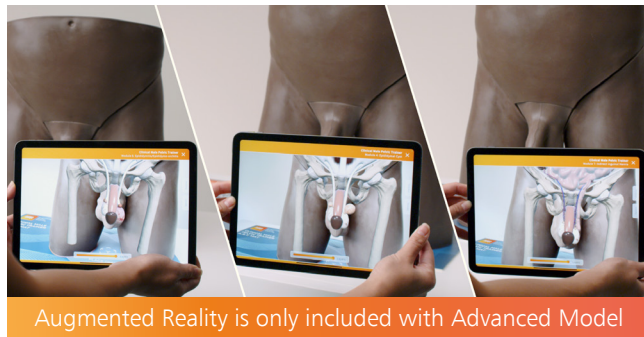
	STANDARD	ADVANCED
Base Unit	✓	✓
Left Lateral Stand	✓	✓
Normal Perineum with Anal Tone	✓	✓
Pathological Perineum with Anal tone	×	✓
Normal Prostate	✓	✓
Benign Unilateral Enlarged Prostate	×	✓
Benign Bilateral Enlarged Prostate	×	✓
Unilateral Carcinoma Prostate	×	✓
Bilateral Carcinoma Prostate	×	✓
Impacted Fecal Matter	✓	✓
External Conditions Illustration Pack	×	✓
Water-based Lubricant	✓	✓

OPTIONAL EXTRAS

60172 Standing Position Stand
 40209 Medium Carry Case
 60185 / 60192 Upgrade from Standard MODEL

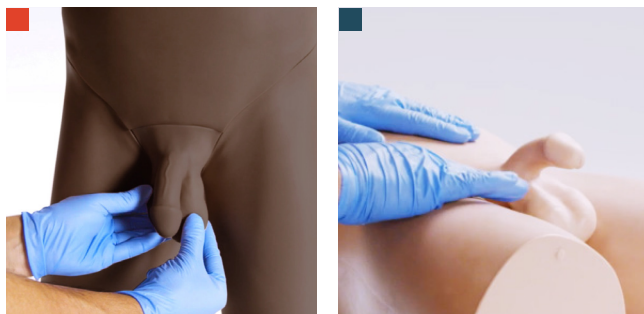
Clinical Male Pelvic Trainer (CMPT)

STANDARD



SKILLS

- Correct examination procedure of male pelvis
- Examination & evaluation of:
 - Normal anatomy
 - Testicular abnormalities
 - Abdominal & pelvic pain
- Dry Catheterization
- Professional-to-patient communication



Realistic training experience
Penile cancer

Pelvic examination, supine position
Diagnosis of pathologies



An ideal platform for teaching and learning hands-on male pelvic examination and diagnosis.

The user-friendly design, combined with clear anatomic landmarks, and a range of male conditions and pathologies creates a realistic training experience for students across all levels of healthcare education from undergraduate level upwards.

Validated in the *Journal of Surgical Education*
Volume 74, Issue 3, May–June 2017.

Developed in collaboration with:

- The Clinical Skills Resource Center, University of Liverpool, UK
- Imperial College, London, UK
- Guy's Hospital, London, UK
- Southmead Hospital, Bristol, UK
- University of Southampton, UK

QUALITIES

ANATOMY

- Abdomen, pelvis & genitalia

Anatomy of the groin with clear anatomical landmarks:

- Anterior Superior Iliac Spine (ASIS)
- Pubic symphysis & tubercle

Genitalia includes:

- Penis with urethra
- 2 foreskins (to demonstrate circumcised & uncircumcised)
- Scrotum (containing testicles with epididymis & vas deferens)

Pathologies (Advanced model only):

- Varicocele
- Testicular tumor & penile cancer
- Epididymal cyst
- Hydrocele
- Orchitis/Epididymo-orchitis
- Indirect inguinal hernia

REALISM

- Soft tissue genitals & abdominal wall
- Accurate representation of internal anatomy & pathologies on the Augmented Reality app

VERSATILITY

- Soft tissue inserts can be removed and replaced

KEY FEATURES

- Visualize underlying conditions with Augmented Reality

SAFETY

- Internal fabrication of modules 5 & 7 contain latex.

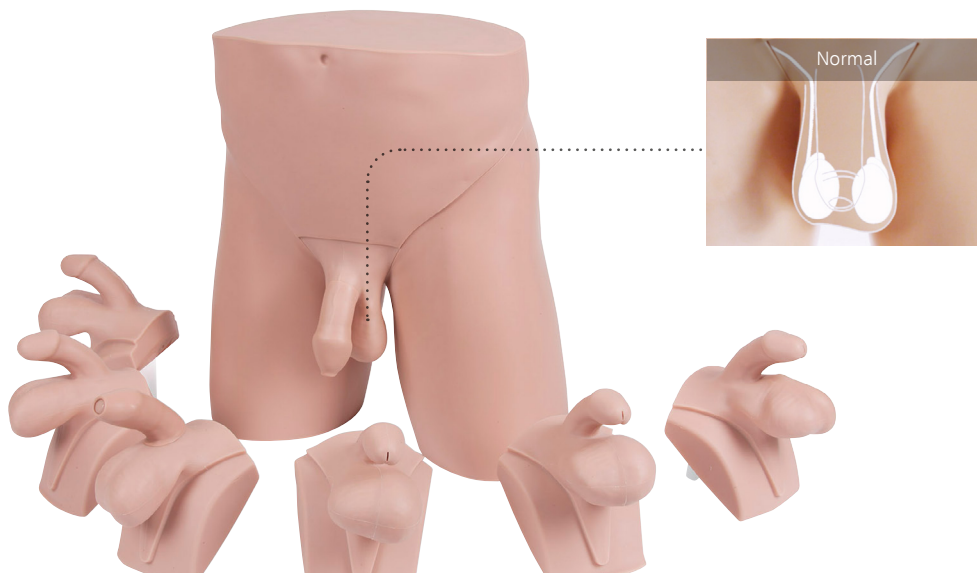
CLEANING & CARE

- Skin surface is washable using soap & water

ADVANCED

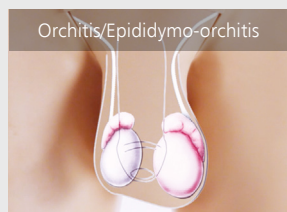
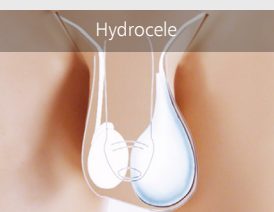
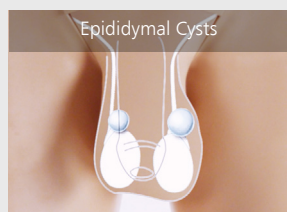
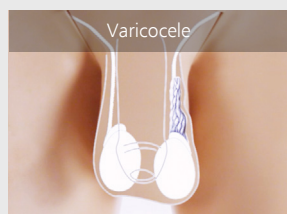
60951

60965



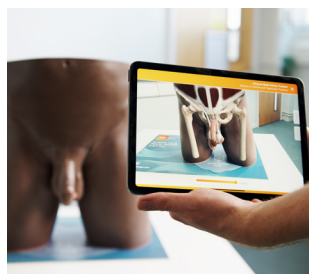
This model includes Augmented Reality

Modules included with the Advanced Model



COMPATIBLE WITH
AUGMENTED REALITY
Discover the benefits on page 6

- No ongoing costs and unlimited users
- Bridge the learning gap between theory and practice
- Interact with internal anatomy to build understanding
- Visualize the effects of different pathologies
- Multiple students learning at once
- Materials to learn with outside of the classroom



WHAT'S INCLUDED

	STANDARD	ADVANCED
CMPT Module 1: Normal	✓	✓
CMPT Module 2: Varicocele	×	✓
CMPT Module 3: Testicular Tumor & Penile Cancer	×	✓
CMPT Module 4: Epididymal Cysts	×	✓
CMPT Module 5: Hydrocele	×	✓
CMPT Module 6: Orchitis/Epididymo-orchitis	×	✓
CMPT Module 7: Indirect Inguinal Hernia	×	✓
CMPT Abdominal Insert	✓	✓
CMPT Pubic Bone	✓	✓(x2)
CMPT Foreskins Pack (each pack contains 2 foreskins & 3 lubricant sachets)	✓	✓(x2 pks)
Lower Torso	✓	✓
Support Base	✓	✓
LED Pen Torch	×	✓
Carry Case	✓	✓(x2)
Augmented Reality Mat	×	✓

Eye Examination Trainers

Eye Examination Trainers are dependable training tools for teaching and practicing the use of an ophthalmoscope, examining the ocular fundus, and learning and identifying diseases and conditions within the eye.

Eye Examination Simulator



KEY FEATURES

- 10 fundal slides feature real clinical images
- Adjustable dilation 3 steps (2.0mm, 3.5mm, 5.0mm), visual axis & depth of fundus slides allow for different degrees of challenge
- Soft & supple material making for realistic eyelid raising.
- Red reflex detectable during examination
- A study guide, covering the cases depicted on the slides, is included to assist in self-study

EYE EXAMINATOR SIMULATOR

STANDARD 10 CASES

- Normal eye-ground
- Hypertensive retinopathy: arteriolar vasoconstriction grade 3, arteriosclerosis grade 1, hemorrhages & cotton wool spots, simple vein concealment
- Simple/background diabetic retinopathy: microaneurysm, hemorrhages & hard exudates
- Papilledema (chronic & acute phase)
- Glaucomatous optic atrophy: glaucomatous optic disc cupping & nerve fiber defect
- Retinal vein occlusion (acute phase & after retinal laser photocoagulation)
- Toxoplasmosis: retinochoroiditis
- Age-related macular degeneration
- 3 types of enlarged optic disc recess

KYOTO KAGAKU

SKILLS

- Correct use with all types of direct ophthalmoscope (not supplied)
 - Right eye to right eye
 - Adjustment of focus (3 steps)
 - Visualization of fundus reflection
- Differentiation of pathologies
- Communication skills

Digital Eye Examination Simulator



KEY FEATURES

- 40 pre-installed authentic fundus cases
- Custom fundus images can be programd via USB
- Adjustable dilation 2 steps (3.5mm, 5.0mm)
- Soft & supple material making for realistic eyelid raising
- Monitor is 160dpi high resolution

DIGITAL EYE EXAMINATOR SIMULATOR -

ENHANCED 40 CASES

- Includes all 10 fundus cases found with Eye Exam Simulator (KKM82)
- Normal eye-ground with enlarged optic disc recess with drusen type 2
- Optic disc hemorrhage
- Hemorrhage
- Chorioretinalatrophy types 1, 2 & 3
- 4 types of vitreous clouding
- 2 types of retinal nerve fiber layer defect
- Pigmentation
- Hemorrhage with vascular white sheath
- Photocoagulation spots
- 3 types of epiretinal membrane
- Customized fundus cases can be programd into the simulator via a USB

Ear Examination Simulator II

KKMW12

KKMW12M

KKMW12D



QUALITIES

ANATOMY

- Head, neck & shoulders
- Anatomically correct soft ear model with external acoustic meatus & tympanic membrane

REALISM

- Ear model allows training in straightening the auditory canal by pulling the auricle
- The neck can be tilted to allow proper head positioning

KEY FEATURES

- Warning against painful insertion, with or without beep
- 9 major clinical cases are prepared:
 - Normal
 - Serous otitis media (SOM)
 - Mucoïd otitis media (MOM)
 - Chronic otitis media with perforation
 - Acute suppurative otitis media (AOM)
 - Cholesteatoma
 - Tympanosclerosis
 - Traumatic perforations
 - Cerumen block
- Foreign body removal set supplied. Includes simulated earwax, small toys & small sponge fragments

VERSATILITY

- Examination possible on both left & right ears
- Suitable for use with all otoscopes
- 4 matching sets of right & left ears
- 2 sizes of ear canal for all cases
- Cases can be switched over easily by using the dial on the back of the mode

SAFETY

- Latex free

KYOTO KAGAKU

A life-size model of the ear including external acoustic meatus and tympanic membrane, for training in examination of the ear with an otoscope and foreign body removal.

The model offers two modes of use:

- Instructor mode: particularly useful for OSCE or skills examination scenarios, allowing instructors to guide and evaluate students' proficiency in ear examination techniques and ability to identify different pathologies.
- Self-learning mode: enables and empowers independent learners to practice and refine their skills at their own pace.

The model warns against painful insertion into the ear by beeping and/or displaying a warning light to the assessor.

A yellow light indicates when the tip of the otoscope reaches the bony part of the ear canal, and a red light indicates when it touches the eardrum.

SKILLS

- Ear examination with an authentic otoscope of your choice (not supplied)
- Diagnosis of up to 9 cases
- Earwax and foreign body removal



- Examination of the ear with an otoscope
- Head can be tilted to allow for proper positioning
- Foreign body removal can be practiced
- Red light comes on when otoscope touches eardrum

WHAT'S INCLUDED

Manikin Head & Shoulders

4 Pairs of Ear Units:

- Examination Ear (Normal)
- Examination Ear (Stenosis)
- Foreign Body Ear (Normal)
- Foreign Body Ear (Stenosis)

Foreign Body Removal Kit

Carry Case

CATHETERIZATION TRAINER RANGE



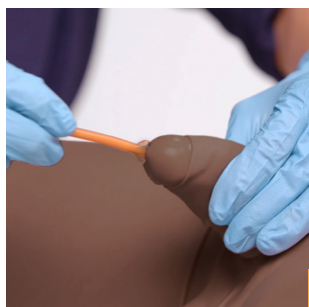
The Catheterization Range facilitates the teaching of urethral and suprapubic Catheterization across all levels of training.

Interchangeable modules allow practice of the fundamental procedures of male and female urethral Catheterization, as well as more advanced skills of

suprapubic management and ultrasound guided insertion.

The anatomically accurate trainers include a supple urethra and resistant sphincter providing a closer to life training experience.

Male Catheterization Trainer



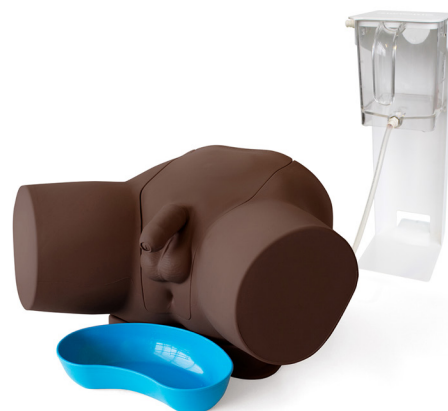
60850

60870

The male trainer has soft and lifelike genitalia to enhance the realistic experience of catheter insertion.

Retractable and removable foreskin.

This model includes Augmented Reality



Female Catheterization Trainer



60851

60869

The female trainer has soft labia allowing trainees to practice parting using the aseptic non-touch technique, as well as suprapubic catheter management and care via the pre-ported bung.

This model includes Augmented Reality



Suprapubic Insertion Unit



60852

60873

Optional module, designed for advanced skills training, allowing trainees to master ultrasound guided suprapubic Catheterization insertion.

Fits into the pelvic shell and stand.



SKILLS

- Correct handling of male & female anatomy
- Aseptic Catheterization technique
- Withdrawal of catheter
- Urinary Catheterization
- Suprapubic catheter management - female module
- Suprapubic catheter insertion (blind & ultrasound-guided)*
- Ultrasound bladder scanning on a full bladder*
- Fluid management



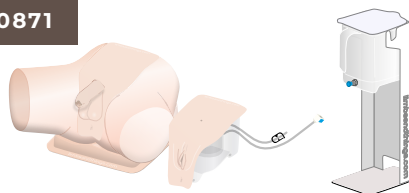
**INCLUDES
AUGMENTED REALITY**
Discover the benefits on page 6

- No ongoing costs and unlimited users
- Bridge the learning gap between theory and practice
- Interact with internal anatomy to build understanding
- Visualize the catheter pathway
- Multiple students learning at once
- Materials to learn with outside of the classroom

Standard Catheterization Trainer Set

60853

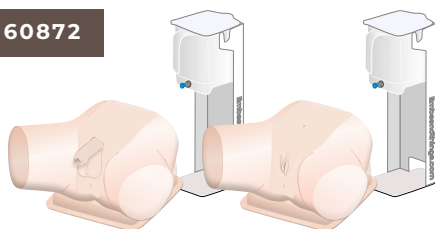
60871



Advanced Catheterization Trainer Set

60854

60872



QUALITIES

REALISM

- Supple urethra & resistant sphincter providing realistic response
- Flaccid penis & removable foreskin
- Vaginal opening & realistic urethral meatus
- Anatomically accurate bladder

KEY FEATURES

- Ability to assess the student's progress
- Ultrasound compatible*
- Easy to set up
- Modular
- Visualize internal anatomy with Augmented Reality

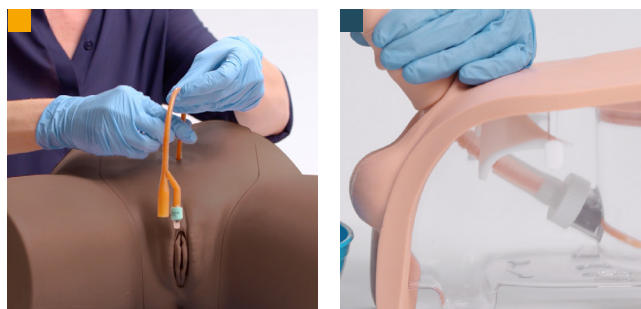
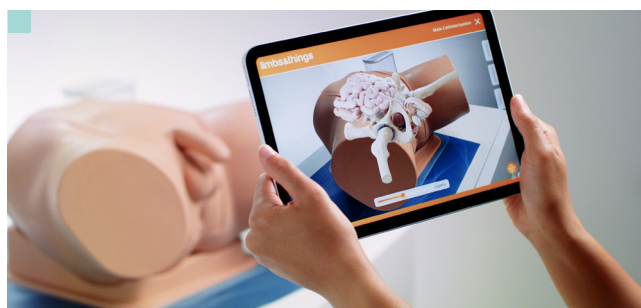
VERSATILITY

- Easily interchangeable male, female & suprapubic Catheterization modules

SAFETY

- Trainer is latex free (catheters provided contain latex)

* 60852 | 60873 Only



Compatible with Augmented Reality

Ability to view catheter path when module used without pelvic shell

Suprapubic management

WHAT'S INCLUDED

	MALE	FEMALE	SUPRAPUBIC (ULTRASOUND)	STANDARD	ADVANCED
Male Catheterization Module	✓	×	×	✓	✓
Female Catheterization Module	×	✓	×	✓	✓
Suprapubic (Ultrasound) Catheterization Module	×	×	✓	×	×
Suprapubic Insertion Bungs (x2)	×	×	✓	×	×
Catheterization Foreskins (x3)	✓	×	×	✓	✓
Aseptic Catheterization Sleeves (x2)	✓	✓	×	✓	✓(x2)
Water System	✓	✓	✓	✓	✓(x2)
Pelvic Shell & Stand	✓	✓	×	✓	✓(x2)
Water Extension Tubing	✓	✓	×	✓	✓(x2)
Limbs & Things Lubricant	✓	✓	×	✓	✓(x2)
Antifungal Agent (Milton Sterilizing Fluid)	✓	✓	✓	✓	✓(x2)
14 French Foley Catheter	✓	✓	×	✓	✓(x2)
Plastic Kidney Dish	✓	✓	×	✓	✓(x2)
Augmented Reality Mat	✓	✓	×	✓	✓(x2)



LUMBAR PUNCTURE & EPIDURAL RANGE



This range offers realistic, repeatable and cost effective training in the core skills of lumbar puncture and epidural anesthesia for both palpation and ultrasound guided techniques.

All three models share a common base but offer different levels of complexity to support trainees from early through to advanced learning.

Designed in conjunction with clinicians, the models feature realistic feel and response while offering a safe environment for learning and skill maintenance.

Lumbar Puncture Model

61000

61023

This model is designed for early years training. It features replaceable tissue inserts, durable spine and dura that accurately recreate the feel of puncturing the dura and the collection and measurement of CSF.

Its separate spine and replaceable tissue means the model is a cost effective way to train large numbers of students.



Advanced Epidural & Lumbar Puncture Model

61001

61024

The Advanced model allows training in both lumbar puncture and epidural administration. Featuring two different epidural inserts: standard and an advanced version with steeper spine, the model is ideal for both early and advanced training for more complex procedures.

This model also features optional fat pads to fit below the skin to increase realism and difficulty for trainees.



Ultrasound Epidural & Lumbar Puncture Model

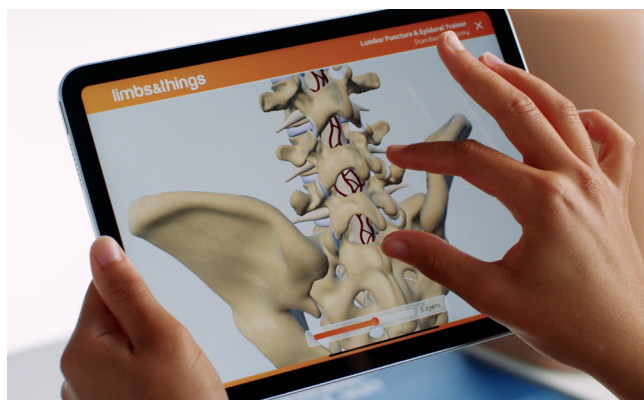
61002

61025

Ideal for those wishing to teach lumbar puncture or epidurals using the ultrasound guided technique.

Tested to work with all major ultrasound brands, this model includes visible facet joints.





QUALITIES

ANATOMY

- Palpable sacrum, iliac crests & vertebrae L2-5

REALISM

- Can feel when the dura has been punctured
- Able to practice loss of resistance technique**
- Obese skin options*
- Optional steeper spine & smaller vertebral spaces*

VERSATILITY

- All inserts compatible with common base
- Rotatable skin and dura to ensure cost effective training
- Position in left lateral and sitting

* 61001 | 61024 Only

** 61001 | 61024 | 61002 | 61025 Only



INCLUDES AUGMENTED REALITY

Discover the benefits on page 6

- No ongoing costs and unlimited users
- Bridge the learning gap between theory and practice
- Interact with internal anatomy to build understanding
- Visualize the path of epidural & lumbar puncture procedures
- Multiple students learning at once
- Materials to learn with outside of the classroom

SKILLS

- Injection of local anesthetics
- Lumbar puncture
- Collect & measure CSF
- Epidural administration
- Ultrasound-guided technique
- Obese option

LUMBAR PUNCTURE MODEL

✓
✓
✓
x
x
x

ADVANCED EPIDURAL & LUMBAR PUNCTURE

✓
✓
✓
✓
x
✓

ULTRASOUND EPIDURAL & LUMBAR PUNCTURE

✓
✓
✓
✓
✓
x

WHAT'S INCLUDED

LUMBAR PUNCTURE MODEL

ADVANCED EPIDURAL & LUMBAR PUNCTURE

ULTRASOUND EPIDURAL & LUMBAR PUNCTURE

- Epidural & Lumbar Puncture Torso with Torso Skin
- Epidural & Lumbar Puncture Stand
- Lumbar Puncture Insert - Bone
- Lumbar Puncture Insert - Tissue (x2)
- Epidural Insert (x2)
- Advanced Epidural Insert (x2)
- Epidural & Lumbar Puncture Ultrasound Insert (x2)
- Epidural & Lumbar Puncture Skin Pad
- Epidural & Lumbar Puncture Fat Pad (x3)
- Epidural & Lumbar Puncture Standard Dura (x2)
- Epidural & Lumbar Puncture Advanced Dura (x4)
- Epidural & Lumbar Puncture Iliac Crest Insert
- Epidural & Lumbar Puncture Insert Cartridge
- Epidural & Lumbar Puncture Sacral Insert
- Water Reservoir
- Marker Pen
- Augmented Reality Mat

✓
✓
✓
✓
x
x
x
✓
x
x
x
x
✓
✓
✓
✓
x
x
✓

✓
✓
✓
✓
✓
✓
x
✓
✓
✓
✓
✓
✓
✓
✓
✓
✓
x
x
✓

✓
✓
x
x
x
x
✓
x
x
✓
✓
✓
✓
✓
x
✓
✓
✓
✓
✓

Chest Drain & Needle Decompression Trainer



60230

61230



Our Chest Drain & Needle Decompression Trainer has been designed to meet the specific requirements of healthcare professionals training in surgical or guidewire assisted thoracostomy and thoracentesis, chest drainage and needle decompression techniques. Chest tube insertion is possible on both types of pad, with the Advance model allowing practice of Seldinger's ultrasound technique.



QUALITIES

ANATOMY

- Representation of adult male thorax with arms raised
- Bony & soft tissue landmarks: manubriosternal joint, clavicles, ribs, pectoralis major & latissimus dorsi
- Internal ultrasound anatomy: diaphragmatic structures and collapsed lung

REALISM

- Can give the impression of breathing under ultrasound when using the advanced pad
- Needle decompression on the midclavicular lines, produces a realistic "hiss" of air releasing. A saline filled syringe can also be used to observe bubbles of gas releasing from the chest cavity
- Simulates movement within the liquid of the chest cavity when using ultrasound-guided procedures
- Standard pads offer a realistic "pop" on insertion of finger or forceps into the pleural space

KEY FEATURES

- Reservoirs can be filled with fluid or mock blood to represent pleural effusion
- Bilateral chest drain & needle decompression pads

VERSATILITY

- Suitable for supine, sitting or leaning forwards positions
- Compatible with thoracic seals when using the standard pad
- Affordable replaceable pads

SAFETY

- Latex free



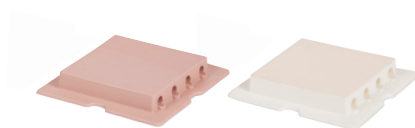
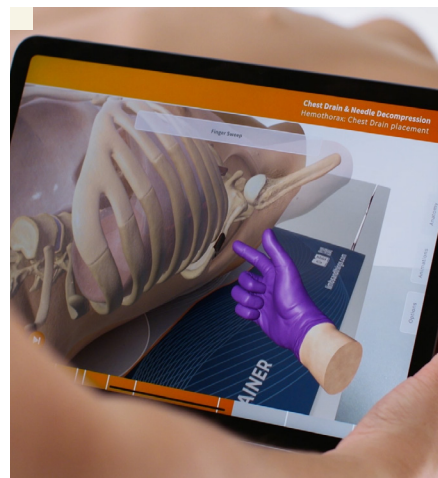
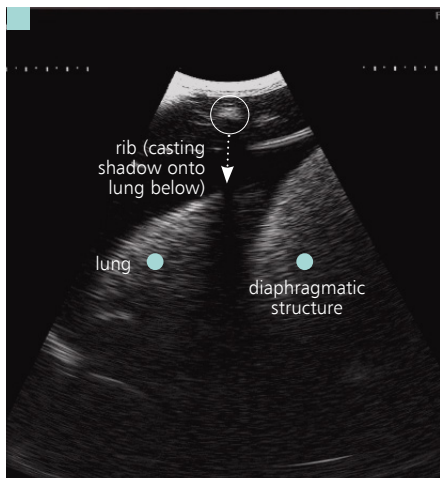
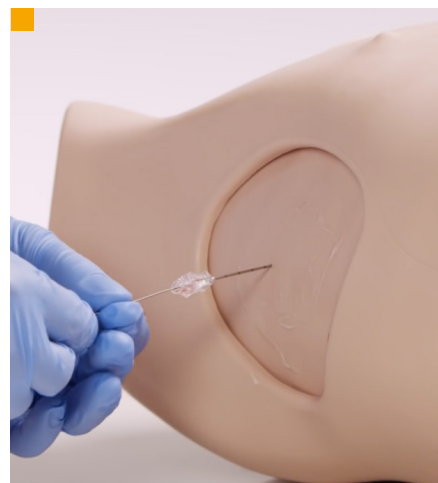
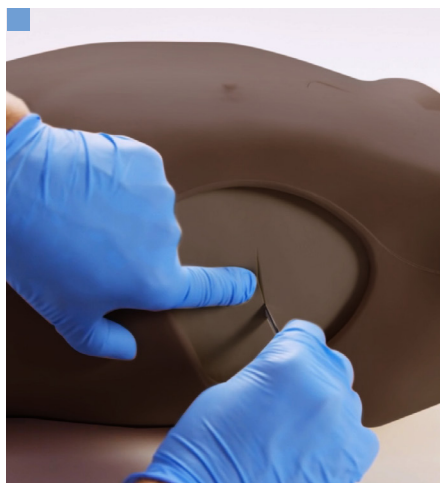
INCLUDES AUGMENTED REALITY

Discover the benefits on page 6

- No ongoing costs and unlimited users
- Bridge the learning gap between theory and practice
- Interact with internal anatomy to build understanding
- Visualize chest drain & needle decompression procedures
- Multiple students learning at once
- Materials to learn with outside of the classroom

SKILLS

- Needle decompression of a tension pneumothorax (at both the 2nd & 5th intercostal space)
- Open or cut-down chest drain insertion: recognition of correct position, surgical incision, blunt dissection through chest wall, perforation of pleura & finger sweep
- Application of adhesive dressings and/or suturing of chest tube
- Ultrasound-guided chest drain insertion (Seldinger technique): including insertion of needle under direct vision & ultrasonic recognition of chest structures
- Management of pleural effusion
- Increased understanding of internal anatomy & procedures with ART



- Blunt dissection
- Chest tube insertion
- Seldinger technique
- Internal anatomy visible under ultrasound
- Realistic needle decompression
- Augmented Reality (AR)

PAD FEATURE COMPARISON

ADVANCED STANDARD

60232

60234

61232

61233

- Ultrasoundable
- Use with liquids
- Effusion
- Hemothorax simulation
- Pleural layer
- Blunt dissection
- Seldinger technique
- Can be sutured
- Needle insertion
- Guidewire insertion
- Dilator insertion
- Drain tube insertion
- Use with adhesive dressings
- Shows respiratory swing
- Latex free

✓
✓
✓
✓
✓
✓
✓
✓
✓
✓
✓
✓
✓
✓
✓
✓

×
×
×
×
✓
×
✓
✓
✓
✓
✓
✓
×
✓
×
✓

WHAT'S INCLUDED

60230

61230

- Needle Decompression Pads (x2)
- Advanced Chest Drain Pads (x2)
- Standard Chest Drain Pads (x2)
- Chest Drain Rib Frame (Left)
- Chest Drain Rib Frame (Right)
- Chest Drain Lungs (x2)
- Chest Drain Diaphragms (x2)
- Chest Drain Ribs (x12)
- Chest Drain Pump: Respiratory Swing
- Chest Drain Pump: Needle Decompression
- Chest Drain Slotted Retaining Knobs
- Key with Keyring
- Torso
- Carry Case
- Augmented Reality Mat

TruMan Trauma Adult

TCTTA0001

TCTTA0001DS

Able to simulate a range of emergency procedures, this model is ideal for training in airway management skills for trauma situations including needle decompression, tracheostomies and chest tube insertion.

KEY FEATURES

- Supports bilateral chest tube insertion
- Full chest needle decompression
- Practice CPR
- Anatomically accurate oral & nasopharyngeal airway
- Ability to simulate difficult airway scenarios including tongue edema
- Realistic look & feel of tissues representing skin, fat & muscle
- Accurate representation of rise & fall during ventilation



Smart TruMan Trauma Adult

TCTTAP001

TCTTAP001DS

Smart TruMan Trauma is able to provide real-time patient monitoring, feedback on CPR performance and with the ability to simulate a patient with advanced airway management needs, the model immerses learners into emergency scenarios.

KEY FEATURES

- Offers real-time CPR feedback and performance tracking
- Assessment tools including ECG, defib support, x-ray images & ultrasound views
- Supports bilateral chest tube insertion with ultrasound
- Full chest needle decompression
- Anatomically accurate oral & nasopharyngeal airway with the ability to change difficulty
- Supports pelvic binding
- Stomach distension identification
- Accurate look & feel of tissues
- Rise & fall of chest during successful ventilation

 **trucorp**


COMPARE MODELS

TRUMAN TRAUMA ADULT

SMART TRUMAN TRAUMA ADULT

Chest Drain	✓	✓
Needle Decompression	✓	✓
Airway Management	✓	✓
Cardiopulmonary Resuscitation (CPR)	✓	✓
- Realtime CPR Feedback	×	✓
Pelvic Binding	✓	✓
Stomach Distension Identification	✓	✓
Vital Signs Monitoring	×	✓
Scenario-Based Assessment	×	✓
Ultrasound & Chest X-Ray Simulation	×	✓

Combined Ultrasound Guided Thoracentesis/ Pericardiocentesis

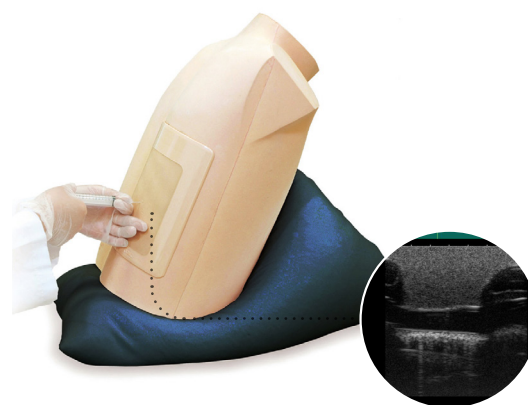
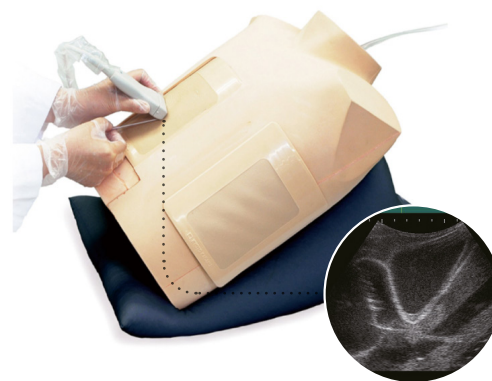
KKMW17

 **KYOTO KAGAKU**

This ultrasound compatible model is a multifaceted trainer that facilitates training in thoracentesis and pericardiocentesis. The combined model allows trainees to use the clear ultrasound image provided to accurately perform both procedures.

The trainer accommodates mid-scapular line access and mid-axillary line access and comes with additional wearable units that allow for the use of a standardized patient in a training scenario.

The trainer provides learners with a platform to repeatedly practice procedures to a highly realistic level, even supporting the ability to pierce the pericardial sac during practice of the pericardiocentesis procedure.



SKILLS

Thoracentesis

- Recognition of anatomical landmarks using ultrasound
- Assessment of level and volume of pleural effusion
- Determination of insertion site
- Needle insertion and collection of fluid
- Patient positioning

Pericardiocentesis

- Ability to practice both the subxiphoid approach and parasternal approach
- Visualization of pericardial fluid using ultrasound scanning
- Landmark palpation
- Identification of 'Larrey's point' for needle insertion
- Needle insertion to the pericardial space
- Aspiration of pericardial effusion
- Patient positioning

WHAT'S INCLUDED

Adult Chest Model
Mid-Axially Line Unit
Mid-Scapular Line Unit
Pericardiocentesis Unit
Pillow for Positioning
Explanation Model for Thoracentesis
Irrigator
Funnel
Syringes (50ml) x2
Joint Hose
Tube with Three-Way Stopcock
Plastic Jar

QUALITIES

ANATOMY

- Left Xiphisternal junction (Larrey's point)
- Anatomical parts include ribs, pleura, soft tissue and diaphragm
- Mid-axillary line: 6-9th ribs
- Mid-scapular line: 8-11th ribs

REALISM

Thoracentesis

- Palpable ribs

Pericardiocentesis

- Realistic needle tip feeling when the needle pierces the pericardial sac
- Confirmation of ventricles, ribs, pericardium, liver and main artery under ultrasound scanning

KEY FEATURES

- Excellent ultrasound image
- Anatomically correct puncture sites reproduce realistic needle-top resistance and sensation
- Clear feedback on successful or unsuccessful procedures
- Strap-on units enhance the learning of patient positioning and professional-to-patient communication
- Durable and replaceable puncture pads

VERSATILITY

- Two sites for access: right mid-scapular line and left mid-axillary line on the Thoracentesis Trainer
- Volume of pleural effusion can be controlled on the Thoracentesis Trainer to set different levels of challenges
- The upper torso manikin can be set in different positions to learn patient positioning for both procedures

TruJunctional



Practice critical lower-body trauma scenarios with TruJunctional. Replicating complex traumatic injuries (gun shots and stab wounds) to build trainee confidence in high-pressure emergency scenarios. Instructors can also simulate unsuccessful hemorrhage control, forcing learners to make decisions under pressure.

SKILLS

- Wound identification
- Wound packing & management
- Pelvic binding
- Junctional & CAT tourniquet placement
- Decision making: option for instructors to choose which interventions will stop the bleeding

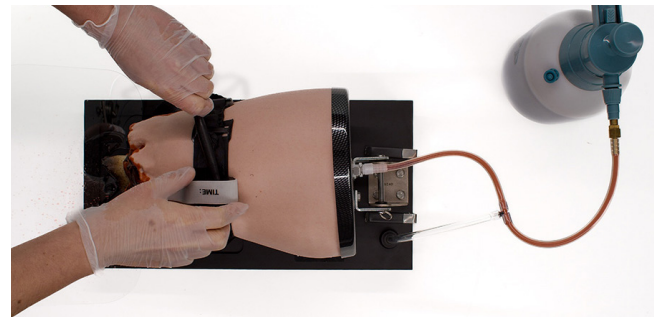
TruTourniquet



The TruTourniquet simulator allows medical professionals to realistically practice controlling massive lower extremity hemorrhages. It helps refine skills in wound management and tourniquet application for severe bleeding in trauma cases, providing visual feedback for correct pressure.

SKILLS

- Combat application
- Tourniquet application
- Techniques for applying various types of tourniquets
- Communication skills



TruWound



The TruWound simulator offers medical professionals a realistic way to train in wound packing techniques required for the care of severe bleeding in trauma patients. Representing a large bullet wound to the upper thigh, the trainer provides instant visual feedback through bloodflow when wound packing techniques are correctly applied.

TruWound delivers versatile training as the trainer has been tested to withstand over 1,500 procedures and comes with 3 wounds for simultaneous practice for multiple learners.



SKILLS

- Wound packing procedures
- Techniques using hemostatic pads
- Communication skills

Clean Bleed[®] Mat

70400



Designed to support any simulation scenario where external blood or fluid loss is a key indicator of a patient's condition such as gunshot wounds, postpartum hemorrhage or post-operative bleeds.

Support different scenarios

Simulated Patient



Task Trainer



Full Body Manikin



KEY FEATURES & BENEFITS

- No mess bleed is contained in a sealed mat
- Easy set up and cleaning
- Controllable blood flow
- Reusable blood & pads for multiple uses & cost-saving
- Portable
- For use indoors & outdoors
- Suitable for use with standardized patients, task trainers & full body manikins
- Simulate a range of fluids

SKILLS

- Identify fluid loss
- Assess the speed & color of the fluid loss
- Practice Quantitative Blood Loss (QBL)
- Monitoring of patient condition
- Intervention decision making
- Determine success of interventions

[Click here to find out more](#)



Smart Airway Adult

TCSAA10001

TCSAA10001DS

Smart Airway Adult provides personalized feedback and assessment to support learners' development of correct technique.

Designed for effective training, users can learn independently with live feedback. Performance statistics and a video of the practice are recorded to allow instructors to debrief learners post-training, supporting efficient workflow. Assessment Mode allows instructors to receive quantitative results and can add feedback, ensuring learning progress is on track.

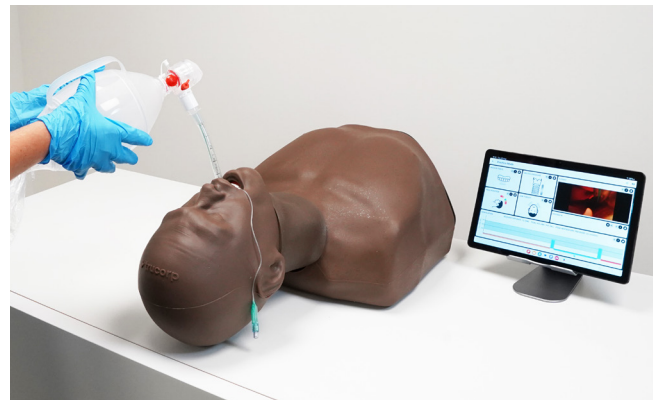
QUALITIES

REALISM

- Adult airway simulation trainer with performance feedback of key metrics
- Supports independent learning with customizable content
- Independent or instructor-led assessment modes

KEY FEATURES

- Realistic adult male torso with visible chest rise & fall
- Uses CT DICOM data for anatomically correct internal features & accurate landmarks



SKILLS

- Needle cricothyroidotomy
- Surgical cricothyroidotomy
- Percutaneous tracheostomy
- Double nasotracheal intubation
- (BVM) Bag valve mask ventilation techniques
- Full range of supraglottic device insertion
- Direct laryngoscopy
- Video laryngoscopy
- Sellick maneuver
- Awake fiber optic examination
- Endotracheal tube insertion
- Combi tube insertion

Smart Airway Child

TCSAC10002

TCSAC10002DS

Enhance your pediatric airway training with Smart Airway Child. Using quantitative and qualitative feedback to guide improvements in airway management technique, the trainer is the ideal tool for independent accurate skill training. Using the instructor or self-led assessment modes provide a basis to track progress.

SKILLS

- Needle cricothyroidotomy
- Surgical cricothyroidotomy
- Percutaneous tracheostomy
- Double nasotracheal intubation
- (BVM) Bag valve mask ventilation techniques
- Full range of supraglottic device insertion
- Direct laryngoscopy
- Video laryngoscopy
- Sellick maneuver
- Awake fiber optic examination
- Endotracheal tube insertion
- Combi tube insertion



QUALITIES

REALISM

- Realistic child torso with visible chest rise & fall
- Uses CT DICOM data of a 6-year-old child for anatomically correct internal features & accurate landmarks

KEY FEATURES

- Child airway trainer with feedback of key performance metrics
- Supports independent learning with customizable content
- Independent or instructor-led assessment modes

AirSim Combo X



The TruCorp AirSim Combo X combines intubation and cricothyrotomy training in one life-like model. The trainer fully supports needle and surgical cricothyroidotomy, and percutaneous tracheostomies. The palpable laryngeal inserts, an inflatable tongue, and improved, real-feel skin, give trainees realistic feedback during procedures.

Airsim Combo Bronchi X



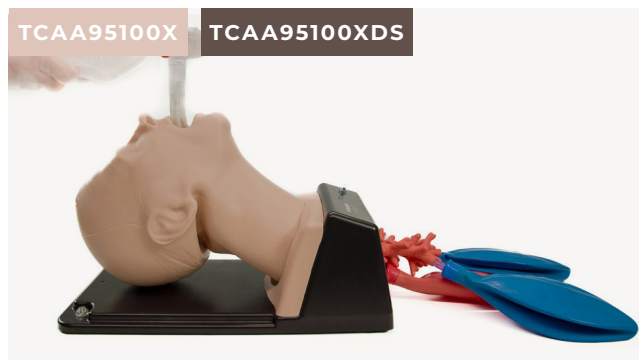
With the addition of the 4th generation bronchi, trainees are able to perform diagnostic bronchoscopies, use bronchial barrier devices to perform lung isolation, and practice suction pulmonary secretions alongside front of neck access.

AirSim Advance X



AirSim Advance X features the uniquely constructed AirSim X airway and an anatomically correct nasal passage for visual accuracy and realistic feedback during airway management procedure practice.

Airsim Advance Bronchi X



With the additional bronchioles, users can train in bronchoscopy, lung suction and lung isolation techniques including, bronchial blocker insertion, single & double endobronchial tubes, and specialized stents.

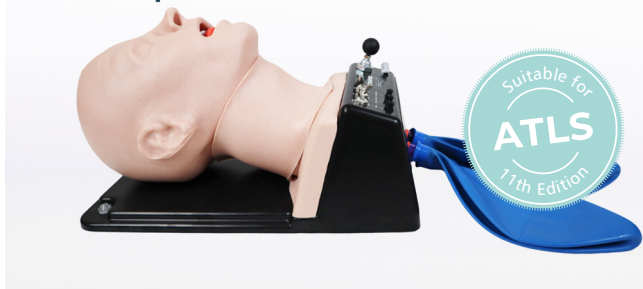
COMPARE MODELS

	AIRSIM ADVANCE X	AIRSIM ADVANCE BRONCHI X	AIRSIM COMBO X	AIRSIM COMBO BRONCHI X
Oral / nasal intubation	✓	✓	✓	✓
Bag Valve Mask ventilation (BVM)	✓	✓	✓	✓
Supraglottic device insertion	✓	✓	✓	✓
Direct / video laryngoscopy	✓	✓	✓	✓
Bronchoscopy	×	✓	×	✓
Needle cricothyroidotomy	×	×	✓	✓
Surgical cricothyroidotomy	×	×	✓	✓
Percutaneous tracheostomy	×	×	✓	✓
Nasogastric tube insertion	✓	✓	✓	✓

AirSim Difficult Airway

TCDA91100

TCDA91100DS

The AirSim Difficult Airway supports trainees' practice in a range of scenarios from scenarios from slight to extreme difficulty, facilitating training for those looking to advance in airway management.

An innovative design allows the tongue, larynx, jaw, head rotation and vocal chords to be uniquely adjusted to create different conditions.

SKILLS

- Laryngospasm
 - Adjustable from normal to complete airway obstruction
 - Sudden closure of the vocal cords can be simulated
 - Upon successful user action, laryngospasm can be mechanically reversed to provide positive feedback
- Displaced larynx
 - Ability to displace the larynx into a more anterior position to make visualization of the vocal cords more challenging
 - Adjustable to provide various levels of difficulty
- Tongue edema
 - The tongue can be swollen to simulate various degrees of tongue angioedema
- Receding / protruding mandible
 - Various degrees of malocclusion, one mandibular variant & two maxillary variants
 - Overbite & underbite features simulated
- Trismus
 - Ability to grossly restrict mouth opening to make insertion of airway devices more challenging
- Neck lock / head rotation restriction
 - Ability to simulate cervical arthropathy through restricting the range of motion of cervical spine neck lock / head rotation restriction

AirSim Child Combo X

TCCC10006X

TCCC10006XDS




Ideal for practicing emergency cricothyroidotomy, oral and nasal intubation training techniques, and percutaneous tracheostomy on a 6-year-old child.

SKILLS

- Double nasotracheal intubation
- Needle & surgical cricothyroidotomy
- Percutaneous tracheostomy
- Oral and nasal intubation
- Laryngeal mask airway & supraglottic device insertion
- Combi tube insertion
- Awake fiber optic intubation
- Video laryngoscopy
- Bag & mask ventilation techniques

AirSim Baby X

TCJR10001X

TCJR10001XDS




The AirSim® Baby X, based on a 0 to 6-month-old, provides a realistic and anatomically correct pediatric manikin for airway management training.

SKILLS

- Double nasotracheal intubation
- Bag and mask ventilation techniques
- Full range of supraglottic devices
- Direct and video laryngoscopy
- Endotracheal tube insertion

ACF Pad - Venipuncture



This soft tissue strap-on pad can be used to train in venipuncture and represents the antecubital fossa of the right arm.

SKILLS

- Professional-to-patient communication
- Recognition of the vein pattern through palpation
- Insertion of a needle & cannula
- Management of blood flow

WHAT'S INCLUDED

Vein for ACF Pad
Epidermis for ACF Pad
Pad Base with Strap

QUALITIES

KEY FEATURES

- Ideal for professional-to-patient communication & scenario-based training using a simulated patient
- Straps onto the antecubital fossa of the arm
- Veins are: self-sealing for repeated use, rechargeable via a one-way valve, supplied with mock blood under pressure and replaceable

VERSATILITY

- Only use Mock Blood - Venous (250ml) (**00223**) to refill these veins
- Compatible with Mock Blood Giving Set (**60651**)

SAFETY

- Tough backing plate to prevent needlestick injuries
- Veins contain latex

CLEANING & CARE

- Replaceable epidermis
- Washable using soap & water

Three Vein Pad - Venipuncture



This soft tissue strap-on pad features 3 straight veins, one of which is pediatric size.

SKILLS

- Professional-to-patient communication
- Insertion of a needle
- Insertion of cannula
- Management of blood flow

WHAT'S INCLUDED

Vein for 3 Vein Pad
Epidermis for 3 Vein Pad
Pad Base with Strap

Extended ACF Pad - Venipuncture

This soft tissue pad is supplied on a base for bench top training in venipuncture and insertion of cannulas. It represents the antecubital fossa of the right arm.

Improved, unidirectional skin texture.



TruCVC

TCTCVC100

TCTCVC100DS



TruCVC is the latest addition to TruCorp's ultrasound-guided task trainers, specifically designed to aid in central venous catheter (CVC) insertion. With realistic and accurate vascular anatomy, TruCVC offers unmatched realism to aid in developing central line skills.

With its user-friendly base, the upper torso can be adjusted to a 15 degree angle for Trendelenburg positioning, allowing the trainer to simulate the elevation of the patients' lower limbs.

SKILLS

- Correct needle positioning
- Central venous catheter placement
- Wire manipulation
- Cannulation techniques
- Trendelenburg positioning
- Fluid injection
- Blood withdrawal
- Seldinger techniques
- Ultrasound techniques

QUALITIES

OVERVIEW

- Unmatched realism for developing central line skills
- Includes suture and ultrasound inserts
- Simple mechanisms can be set up in under 5 minutes

ANATOMY

Clinical Anatomy:

- Upper torso & neck, adult male
- Right clavicle
- Manubrium
- First right rib
- Sternocleidomastoid muscle

Vascular Anatomy:

- Internal jugular vein
- Subclavian vein
- Carotid artery
- Subclavian artery

REALISM

- Realistic vascular anatomy
- Accurate head positioning
- Vascular tenting upon vascular access
- Arterial pulse simulation possible
- Simulator allows for withdrawal & administration of fluids

TruIV Block



TruIV Block is efficient and easy to set up, giving more time for learning IV cannulation skills and ultrasound techniques

Designed to represent a variety of patient types, it contains both superficial and deep veins at a range of diameters (4-8mm). It also features fascia layers for enhanced realism.

SKILLS

- Probe positioning and movement
- Identification of veins in soft responsive tissue
- Targeting veins for vascular access
- Ultrasound guided IV cannulation

Ultrasound Vascular Access Trainer



An echolucent and contoured model with representation of the jugular vein for teaching needle insertion under ultrasound. Fluid volume and pressure can be changed to represent variability in patient circulation. The trainer is self-sealing for repeated use.

SKILLS

- Use of ultrasound technology
- Handling ultrasound transducers
- Insertion of needles under ultrasound guidance
- Handling and management of guidelines and catheters under ultrasound
- Recognition of vessels using ultrasound

Ultrasound Guided PICC Training Simulator



A simulator for comprehensive hands-on training in Peripherally Inserted Central Catheter (PICC) line insertion and removal under ultrasound guidance.

SKILLS

- Patient positioning
- Puncture site selection
- Ultrasound-guided venous access
- Seldinger technique
- Peel-away cannula technique
- Advancement of the cannula into the SVC

REALISM

- Palpable ribs & right clavicle allow measurement of catheter length as well as providing anatomical understanding of the correct PICC tip location
- Anatomically correct bifurcation of the vein in the upper chest provides realistic resistance from the outer vessel walls and allows simulation of complications such as incorrect insertion of the catheter into the jugular, thoracodorsal or subclavian vein
- Realistic flashback confirms successful venous access

ARTERIAL PUNCTURE WRIST



Designed to support the full learning journey, this model enables trainees to build confidence in both arterial blood gas sampling and arterial line placement.

Preset pulse and pressure rate options allow for standardized and repeatable training which is ideal for classroom teaching and exam settings such as OSCEs. Use with simulated or standardized patients for added realism.

STANDARD

ULTRASOUND

72500

72501

QUALITIES

ANATOMY

- Wrist with lifelike movement
- Radial artery
- Pulse rate (40, 80, 120 BPM)
- Blood pressure (low, medium, high representation)

REALISM

- Quiet pump for minimal distractions
- Wrist cuff to conceal visual indicators
- Representation of 9 clinical presentations
- Blood flashback
- Self-fill a syringe
- Full cannula insertion compatible with:
 - Range of over the needle 20 gauge cannulas
 - Seldinger technique
- Realistic ultrasound imagery with the ultrasound insert

LEARNING VERSATILITY

- Classroom, skills lab, or immersive environment learning
- Ideal for exam settings
- Use with simulated patient or standalone

MAINTENANCE

- Easy cleaning mode
- Modular vessels & injection site tissue blocks for easy and cost effective replacement
- Popper system allows for easy access to vessels for replacement and effortless skin installation

WHAT'S INCLUDED	STANDARD	ULTRASOUND
Arterial Puncture Wrist	✓	✓
Arterial Puncture Wrist Stand	✓	✓
Outer Skin	✓	✓
Inner Block	✓	✓
Pump Unit	✓	✓
Arterial Puncture Vessels	✓ x10	✓ x10
Standard Block	✓ x2	✓ x2
Ultrasound Block	×	✓ x2
Skin Cuff	✓	✓
Fluid Bottle	✓	✓
Concentrated Blood	✓	✓
International Power Cable	✓	✓

NEW



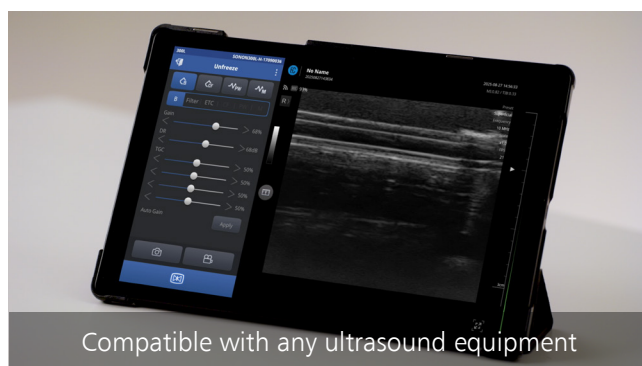
Ultrasound Arterial Puncture Wrist

Enhance training with the Ultrasound model which includes two additional inserts to support the practice of ultrasound-guided techniques. Trainees can use their existing ultrasound equipment to locate the artery, identify access points, and build confidence interpreting ultrasound images.

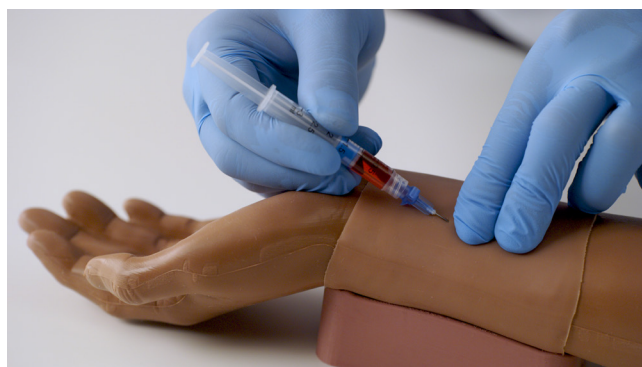
SKILLS

STANDARD ULTRASOUND

Wrist positioning	✓	✓
Palpation of artery	✓	✓
Assessing pulse & pressure	✓	✓
Identifying access points	✓	✓
Arterial blood gas sampling	✓	✓
Cannulation / Line placement	✓	✓
Ultrasound guided practice	x	✓



Ideal for classroom learning



Use with standardized patient

VENIPUNCTURE ARM RANGE



The Venipuncture Arm Range provides the ideal training platform for practicing the skills related to venipuncture and IV cannulation.

Suitable for undergraduate and postgraduate level training.



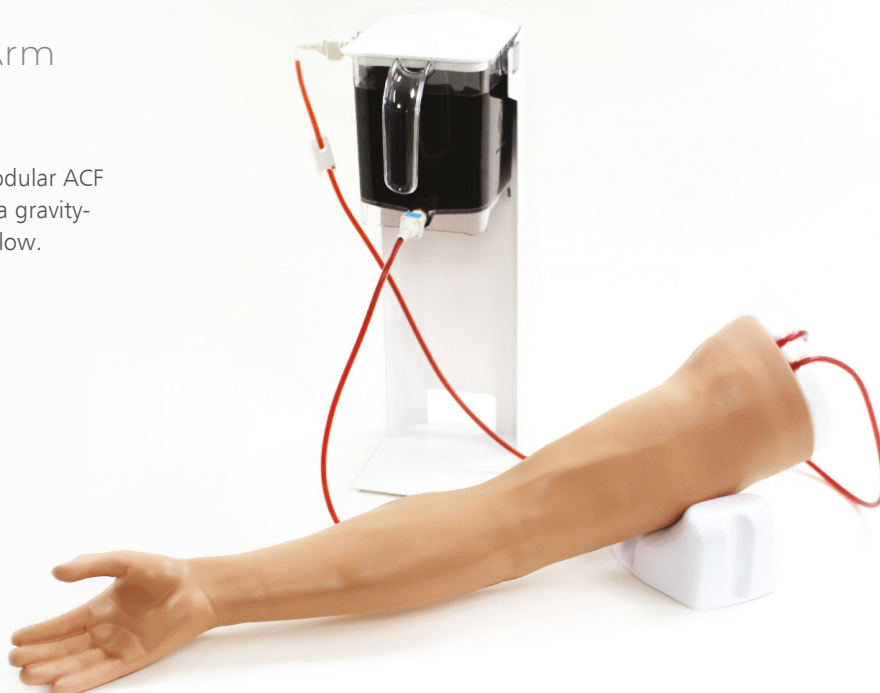
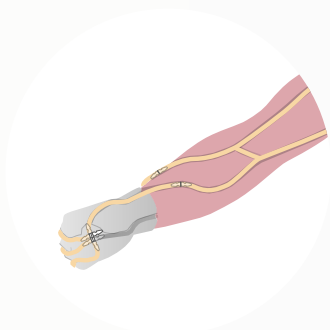
The patent pending* skin locking mechanism ensures the model is easy to re-skin whilst maintaining the lifelike haptics of the underlying and fully palpable basilic, cephalic and dorsal metacarpal veins.

Standard Venipuncture Arm

70302

70303

The Standard Venipuncture Arm features modular ACF and metacarpal vein anatomy connected to a gravity-fed fluid system, providing a realistic blood flow.

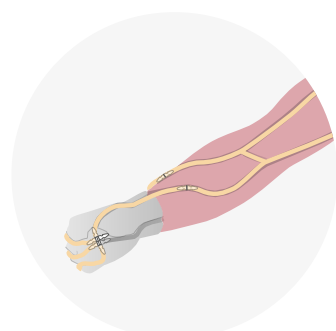


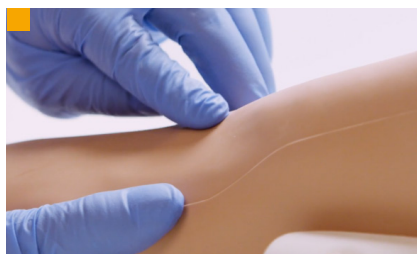
Advanced Venipuncture Arm

70300

70301

The Advanced Venipuncture Arm features antecubital fossa (ACF) and metacarpal vein anatomy connected to a pressurized fluid system, providing a spill-proof blood supply.





SKILLS

- Venipuncture
- IV cannulation
- IV infusion
- Practice of aseptic technique

- Visual inspection & palpation
- Gripping system provides true-to-life vein placement
- Ability to position the hand for life like cannula insertion

QUALITIES

REALISM

- Realistic blood flashback
- More realistic arm look & feel
- Gripping system provides true-to-life vein placement

KEY FEATURES

- Realistic & palpable vein haptics promote accurate clinical use
- Easy-to-fit skin locking system (patent pending*) increases anatomical realism
- Vein gripping feature facilitates correct vein positioning, repeatable training & an easier re-skinning process
- Enables the application of digital pressure to stem blood flow
- Infusion tube allows for IV fluids to be administered
- Can be used in conjunction with a simulated patient

VERSATILITY

- Compatible with vacuum blood collection systems, needle & syringe & IV cannulas
- Durable skin
- Extended tubing allows for simulated patient in a classroom setting
- Veins can withstand up to 500 punctures from a 21g needle
- Arm can be upgraded through purchase of modular veins & the Advanced Pressurized Pump

SAFETY

- Basic, standard & advanced veins contain latex
- Latex-free basic vein option available (reduced durability)

CLEANING & CARE

- Easy to clean, service & maintain

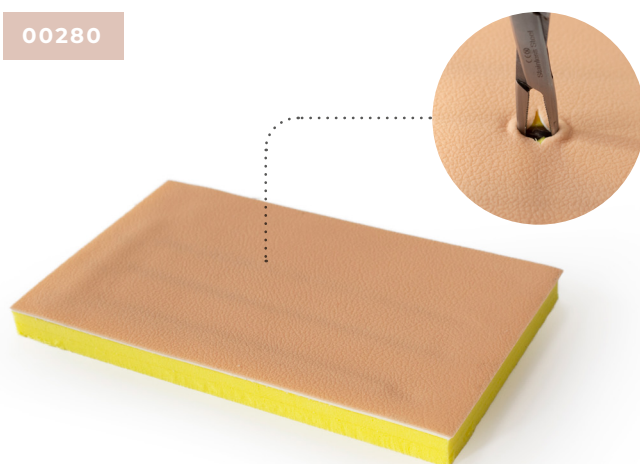
WHAT'S INCLUDED

	STANDARD	ADVANCED
Venipuncture Arm	✓	✓
Venipuncture Arm Skin	✓	✓
Basic Venipuncture Arm Vein	x	x
ACF Vein Module	✓	✓
Metacarpal Vein Module	✓	✓
Gravity Fed Blood System	✓	x
Pressurized Blood Pump System	x	✓
Concentrated Venous Blood - Starter Pack	✓	✓
Venipuncture Arm Rest	✓	✓
Refill Bottle	x	✓
Venipuncture Arm Infusion Tube	✓	✓
Lubricant	✓	✓

VALUE PACKS	ADV PACK (MIXED) 70318	STD PACK (MIXED) 70324	ADV PACK (LIGHT) 70313	ADV PACK (DARK) 70314	STD PACK (LIGHT) 70322	STD PACK (DARK) 70323
Adv Trainer (Light)	2	x	5	x	x	x
Adv Trainer (Dark)	2	x	x	5	x	x
Std Trainer (Light)	x	2	x	x	5	x
Std Trainer (Dark)	x	2	x	x	x	5
Arm Skin (Light)	2	2	5	x	5	x
Arm Skin (Dark)	2	2	x	5	x	5
ACF Vein Modules	4	4	5	5	5	5

Cutdown Pad

00280



A multi-layered pad containing filled veins for practicing venous cutdown procedure.

Injection Trainer

00310

00312



Our soft tissue injection pad is designed for practicing intradermal, subcutaneous and intramuscular tissue injection techniques.

The Injection Trainer has multiple tissue layers representing the epidermis, dermis, adipose and muscle layer and can easily attach to an arm or thigh to help teach professional-to-patient communication.

SKILLS

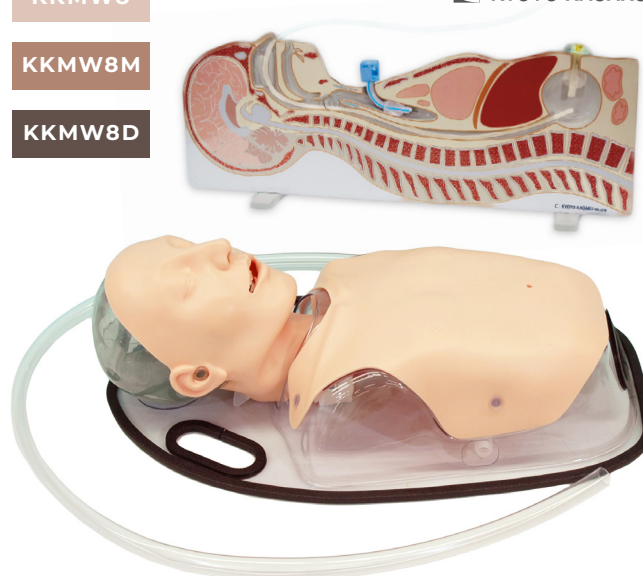
- Subcutaneous injection
- Intradermal & intramuscular injection
- Management of tissue
- Professional-to-patient communication

Tube Feeding Simulator

KKMW8

KKMW8M

KKMW8D

 KYOTO KAGAKU


An effective trainer for caregivers and medical professionals who work with patients receiving enteral tube nutrition. The manikin offers three routes for EN tubes and allows training with real liquid foods. The placement of the tubes can be confirmed by auscultation as well as direct observation. The model is supplied with a feeding routes panel and a chest anatomy overlay sheet to facilitate anatomical understanding.

SKILLS

- Nasogastric (NG) & Orogastric (OG) tube insertion
- Percutaneous Endoscopic Gastrostomy (PEG)
- Gastric lavage
- Administration of liquid food

QUALITIES

REALISM

- Transparent chest overlay enables direct observation of procedures
- Can be set at Fowler's position
- Flexible neck allows for appropriate neck/head positioning

KEY FEATURES

- Tube placement can be confirmed by fluid aspiration
- Stomach accepts up to 300cc of liquid

VERSATILITY

- Compact & portable

WHAT'S INCLUDED

Male Torso & Support Base
Drain Tube
Funnel
Plastic Cup

Tube Feeding Routes Panel
Chest Sheet
Instruction Manual
Lubricant

Paracentesis Trainer

60100

60111



This trainer fulfills the fundamental component of Internal Medicine Training in diagnostic and therapeutic techniques of paracentesis. Both landmark and ultrasound guided techniques can be practiced.

Trainees are able to identify the echogenic anatomy, enabling them to learn how to safely insert a needle or catheter into the peritoneal cavity.

QUALITIES

ANATOMY

- Torso featuring bony landmarks (pubis symphysis, iliac crest) & umbilicus
- Internal anatomy includes:
 - Liver
 - Spleen
 - Bowel
 - Floating bowel

REALISM

- Realistic tissue and needle response

KEY FEATURES

- Palpation or ultrasound techniques can be practiced (side by side)
- Internal echogenic anatomy to allow recognition of landmarks under ultrasound
- Two 3.5 liter chambers can be filled with water for practice drainage
- Cost effective consumable pads

VERSATILITY

- Self-sealing pads, withstanding up to 200 needle or up to 100 rocket catheter insertions
- Ability to insert & remove a drain
- Positions both supine & lying on side

SAFETY

- Latex free

CLEANING & CARE

- Skin surface is washable using soap & water



- Trainer with skin removed, showing internal anatomy
- Catheter insertion for therapeutic drainage
- Needle insertion for diagnostic purposes
- Ultrasound-guided technique

SKILLS

- Familiarity with the abdominal regions & underlying anatomy
- Palpation of anatomical landmarks
- Identification of ascites (change excess fluid)
- Identification of safe ultrasound guided needle & catheter insertion
- Insertion of needle into peritoneal cavity for therapeutic or diagnostic purposes
- Professional-to-patient communication

WHAT'S INCLUDED

Paracentesis Skin
Paracentesis Pads (x2)
Paracentesis Liver
Paracentesis Spleen
Paracentesis Bowel Insert (x2)
Paracentesis Floating Bowel (x2)
Paracentesis Clamping Frame (x2)
Paracentesis Large Volume Refill System
Base Unit
Carry Case

Patient Care Simulator “Yaye”

KKMW25



KYOTO KAGAKU

Yaye is an advanced, full-body nursing manikin designed for hands-on training in a wide range of skills required for day-to-day patient care. Suitable for teaching fundamental nursing skills to registered nursing students.

SKILLS

- Body positioning/patient handling/passive exercise
- Bed bathing & change of clothes
- Airway management
- CPR
- Assessment of chest & abdomen
- Oral & denture care
- Nasogastric tube placement
- Oxygen/nasal cannula placement
- Tracheotomy care & management
- Stomach pumping
- TPN care
- PEG care
- Stoma care
- Pressure ulcer care
- Subcutaneous injection
- Intramuscular injection
- IV insertion & care
- Male & female urinary Catheterization
- Enema
- Suppository insertion
- Perineal care
- Wound dehiscence care
- Wrapping of dressings

WHAT'S INCLUDED

Yaye Patient Care Manikin	Set of Simulated Feces
Dentures	Lubricant (for Airway Suction etc.)
Wig (Black)	Lubricant (for Catheterization etc.)
Face Mask (Young)	Irrigation Bag
Injection Pad (Median Vein)	Drainage Pump (Urinary Bladder)
Shoulder Injection Pads (x2)	Drainage Pump (Rectum)
Thigh Injection Pads (x2)	Drainage Hose
Hip IM Pads (x2)	Set of Pyjamas
Female Genitalia (Catheterization)	Instruction Manual
Female Genitalia (Suppository Insertion/Digital Disimpaction)	



- Assessment of chest & abdomen
- Variable age, sex & personality
- IV route training
- Airway management & CPR

QUALITIES

ANATOMY

- Interchangeable wigs, genitalia & masks to simulate a variety of patients

REALISM

- Simulating all the daily activities of patient care
- Enhanced Range of Motion (ROM) for better patient assessment & positioning

KEY FEATURES

- Soft & elastic abdomen allows for assessment of chest & abdomen
- Airway management & CPR

VERSATILITY

- Easily interchangeable male & female genitalia
- Suitable for postmortem care
- Provides training for all levels — from trainees to experienced staff

CLEANING & CARE

- Skin surface is washable using soap & water

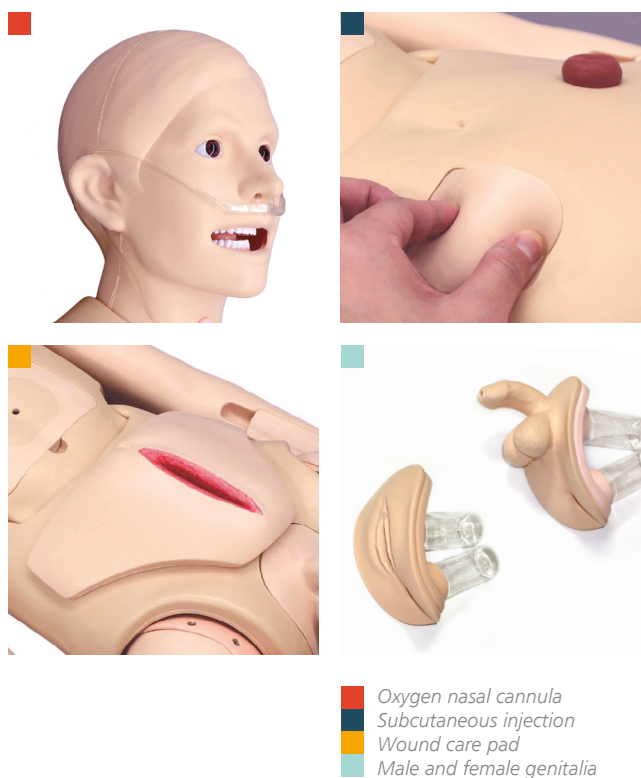
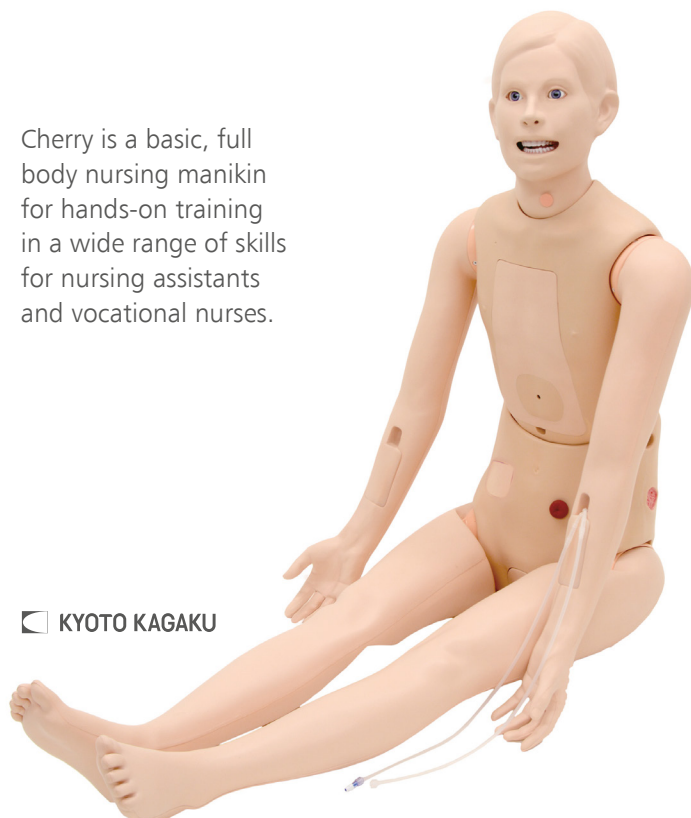






Visit limbsandthings.com
for more information about Optional Consumables

Patient Care Simulator “Cherry”

KKMW22

Cherry is a basic, full body nursing manikin for hands-on training in a wide range of skills for nursing assistants and vocational nurses.

 KYOTO KAGAKU


 Oxygen nasal cannula
 Subcutaneous injection
 Wound care pad
 Male and female genitalia

SKILLS

- Oral & denture care
- Nasogastric tube placement
- Oxygen/nasal cannula placement
- Tracheotomy care & management
- Stomach pumping
- TPN care
- PEG care
- Stoma care
- Pressure ulcer care
- Subcutaneous injection
- Intramuscular injection
- IV insertion & care
- Male & female urinary Catheterization
- Enema
- Suppository insertion
- Perineal care
- Wound dehiscence care
- Wrapping of dressings
- Subcutaneous injection

WHAT'S INCLUDED

Female Genitalia
 Male Genitalia
 Wound Care Pad
 Cherry Patient Care Manikin
 Femoral IM Injection Pad
 Upper Arm IM Injection Pad
 Bottle
 Syringe

QUALITIES

ANATOMY

- Male & female genitalia

REALISM

- Seamless arms & legs enable realistic bed & foot bathing
- Joint articulation for patient handling & passive exercise

KEY FEATURES

- TPN and IV routes to simulate patients with catheter lines
- Pressure sores of different depths located at the scapula, greater trochanter, sacral bone & heel
- Subcutaneous & intramuscular injection pads accept liquid & can be squeezed out after use

VERSATILITY

- Easily interchangeable male & female genitalia
- Suitable for wide range of basic care
- Removable dentures

CLEANING & CARE

- Skin surface is washable using soap & water



Visit limbsandthings.com
for more information about Optional Consumables

BSS Day 1 Kit

50070



WHAT'S INCLUDED

Double Layer Bowel 30mm
 BSS Lesion & Cyst
 BSS Surgical Skills Board
 BSS Tendon Repair Trainer
 BSS Knot Tying Trainer
 Skin Pad Jig with Skin Pad
 BSS Soft Tissue Retaining Set
 Hemostasis Pad

BSS Day 2 Kit

50071



WHAT'S INCLUDED

BSS Abscess
 BSS Traumatic Wound with Simulated Foreign Bodies
 BSS AOCT Pad
 BSS AOCT Frame
 Drain
 8mm x 140mm Artery
 8mm x 76mm Graft Patch

Double Layer Bowel



50061

30mm
 OUTSIDE DIAMETER

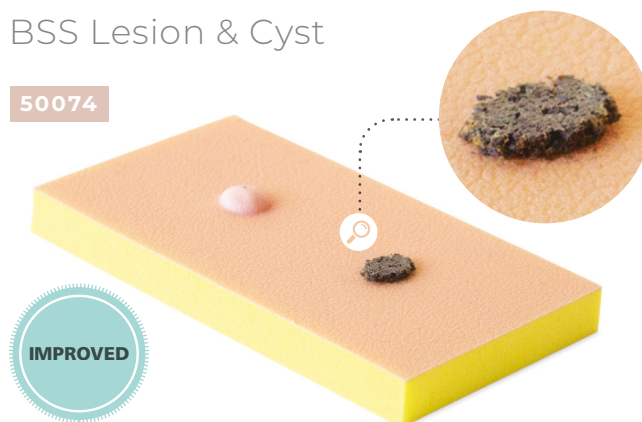
50065

20mm
 OUTSIDE DIAMETER

Realistic 2 layer bowel simulation for training in anastomosis techniques. Both models are approximately 200mm in length.

BSS Lesion & Cyst

50074



For the practice of skin lesion removal, local anesthesia and biopsy techniques. Cyst has a fragile epidermoid wall filled with simulated pus. This product is also available as part of the BSS Day 1 Kit (**50070**).

Knot Tying Trainer

50050



A comprehensive trainer for teaching all surgical knot tying techniques.

BSS Abscess

50075



For abscess drainage and necrotic wound debridement (contains simulated pus). Also available as part of the BSS Day 2 Kit. Contains latex.

SUTURE TUTOR *PLUS*™

All you need to learn basic instrument handling, knot tying, suturing and more.

SUTURE TUTOR *PLUS*™ is a complete training package to help medical students and healthcare professionals master fundamental hands-on skills relating to instrument handling, knot tying and suturing.

The product consists of two parts which can be purchased individually, or together as a complete package.

Online, Video-based Course



An online, video-based course that can be accessed anytime, anywhere. Developed in collaboration with Professors of Surgical Education Jonathan Beard and Roger Kneebone, the 11 module course closely follows the Intercollegiate Surgical Curriculum Program.

- Unlimited access
- Explanatory videos use computer graphics for clarity
- Demonstration videos use clinical footage
- Practical videos use Limbs & Things products from the Hands-on Kit

SKILLS

- Handling of instruments
- Needles & sutures
- Knot tying
- Incision of skin & subcutaneous tissue
- Suturing techniques
- Suture aftercare
- Patient management & consent
- Scrubbing, gowning & gloving
- Cleaning a wound
- Local anesthesia
- Other methods of wound closure

Hands-on Kit

STP-KIT

STP-KIT-DST



A Hands-on Kit including a professional skin pad, 10 sutures, basic knot tying kit and all necessary instruments to allow repeated practice of suturing techniques.

Can be purchased on its own or with the online course.



WHAT'S INCLUDED

Single Professional Skin Pad Mk 3 - Large
 Skin Pad Jig Mk 3
 Basic Knot-tying Kit
 Pack of 10 Sutures (non-sterile)
 Scalpel
 Dissecting Forceps
 Scissors
 Needle Holder

Ingrowing Toenail Trainer

80060

80061



The Ingrowing Toenail Trainer closely simulates an adult inflamed toe end and allows for procedures such as wedge excision, ring block and total ablation of the nail bed.

Ingrown toenail removal is a common practice for both general practitioners and family medicine practitioners and is an essential skill that is required in general surgery training such as the intercollegiate surgical curriculum.



SKILLS

- Ring block techniques
- Application of a tourniquet
- Total nail avulsion
- Phenolisation techniques
- Ablation of the nail bed
- Wedge excision - partial nail avulsion

WHAT'S INCLUDED

Toe Jig
Toe Ends (x3)

Wound Closure Pad

00042

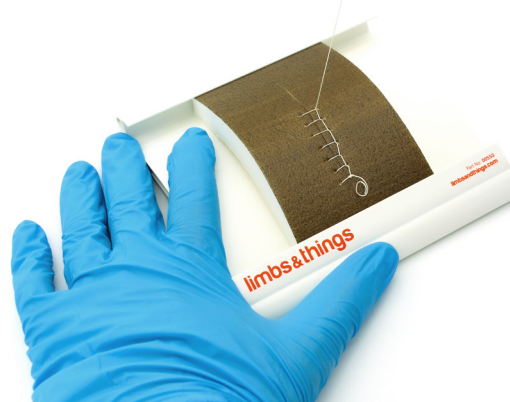
00044

00041

00043

SMALL (x12) SMALL (x12)

LARGE (x6) LARGE (x6)



A low cost, 1 layer pad, ideal for demonstrating, training and practicing core skills associated with wound closure.

SKILLS

- Making an incision
- Application of skin adhesives
- Interrupted suturing & knotting
- Stapling



QUALITIES

REALISM

- Works with all major topical skin adhesives

KEY FEATURES

- An excellent starter pad for wound closure training
- Pad dimensions: large 145mm x 125mm, small 125mm x 72mm

VERSATILITY

- Use with the Skin Pad Jig Mk 3 (00550)

SAFETY

- Latex free

Professional Skin Pad

00091

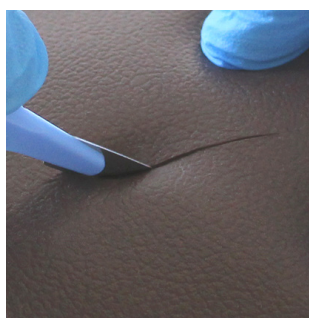
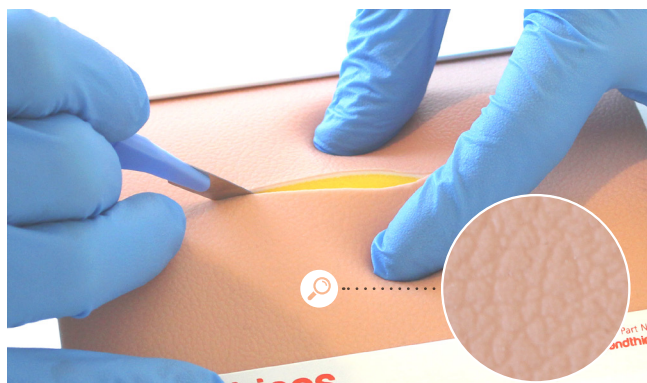
00093

00092

00094

SMALL (x4) SMALL (x4)

LARGE (x2) LARGE (x2)



An advanced 3 layer skin pad for demonstrating and practicing a variety of incisions and a wide range of suturing techniques.

SKILLS

- Incisions: linear, ellipse, flaps, shaped
- Subcuticular undermining
- Simple & advanced interrupted suturing techniques
- Subcuticular suturing
- Continuous suturing
- Stapling
- Use of adhesive strips

QUALITIES

REALISM

- Improved, unidirectional skin texture
- Realistic tissue response with a similar drag & strength to human skin
- All layers have realistic retention of sutures

KEY FEATURES

- Pad dimensions: large 145mm x 125mm, small 125mm x 72mm

VERSATILITY

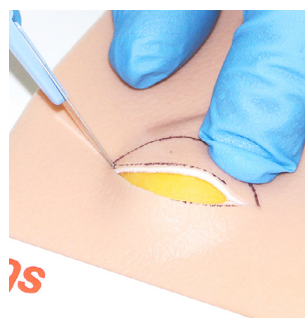
- Serves the needs of both specialist & beginner
- Use with the Skin Pad Jig (00550)

SAFETY

- Latex free

Lipoma Pad

00081



For practicing the full lipoma removal procedure. 3 layer skin: epidermis, dermis and subdermal layer. Pad contains 2 lipomas.

SKILLS

- Designing the incision
- Marking out the lipoma
- Incising the skin
- Blunt dissection
- Removal
- Closure

QUALITIES

REALISM

- Improved, unidirectional skin texture
- Lipoma is consistent with that found in a patient
- Lipoma sited within the fat layer
- Precise replication of in-vivo adhesion
- All layers of tissue can be identified

KEY FEATURES

- Pad dimensions: 125mm x 72mm

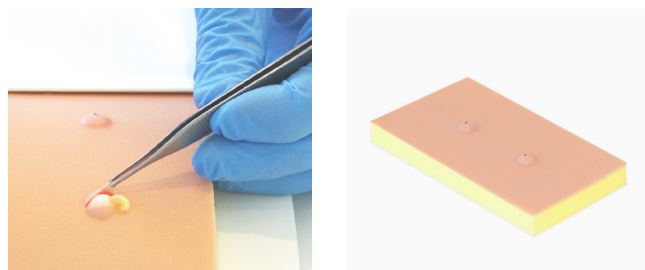
VERSATILITY

- Use with the Skin Pad Jig (00550)

SAFETY

- Latex free

Sebaceous Cyst Pad



For practicing the full sebaceous cyst removal procedure. A 2 layer skin pad with epidermis and subdermal layer. Contains 2 Cysts.

SKILLS

- Marking out the cyst
- Planning & marking the ellipse
- Incising the skin
- Sharp dissection
- Blunt dissection
- Management of a burst cyst
- Removal
- Closure

QUALITIES

ANATOMY

- Improved, unidirectional skin texture
- 2 layer skin: epidermis & subdermal layer
- Contains 2 Cysts

REALISM

- Cyst is consistent with that found in a patient
- Cyst exhibits appropriate adhesion to other surrounding tissue
- Cyst sited immediately below skin layer & is attached firmly to its underside
- Fragile epidermoid wall filled with simulated pus

KEY FEATURES

- Pad dimensions: 125mm x 72mm

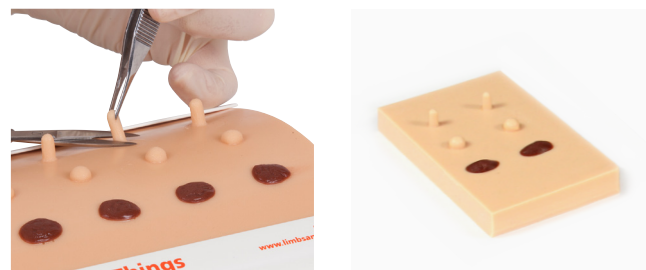
VERSATILITY

- Use with the Skin Pad Jig Mk 3 (00550)

SAFETY

- Latex free

Curettage, Snip & Shave Excision Pad



Combines a number of skin lesions (tags, naevi, seborrhoeic keratoses) for teaching superficial dermatological lesion removal techniques.

SKILLS

- Snip excision
- Shave excision
- Curettage

QUALITIES

REALISM

- Stretches to allow realistic extension of the tissue surrounding the skin tags during snip excision
- Stretches to allow realistic extension of naevi during shave excision
- Allows seborrhoeic keratoses to be removed using curettage technique

KEY FEATURES

- Cost effective: large pad with 4 skin tags, 4 naevi & 4 seborrhoeic keratoses. The small pad has 2 of each
- Pad dimensions: large 145mm x 125mm, small 125mm x 72mm

VERSATILITY

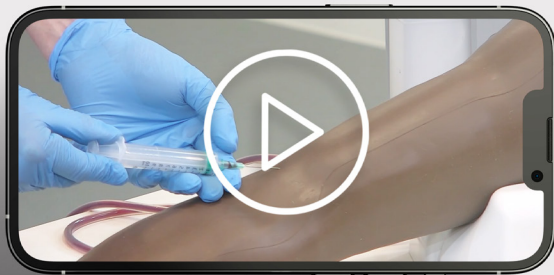
- Use with the Skin Pad Jig (00550)

SAFETY

- Latex free

Hints & Things

Your video guide to easy product set-up & use



For smooth training sessions with our models visit our Hints & Things playlist on YouTube.

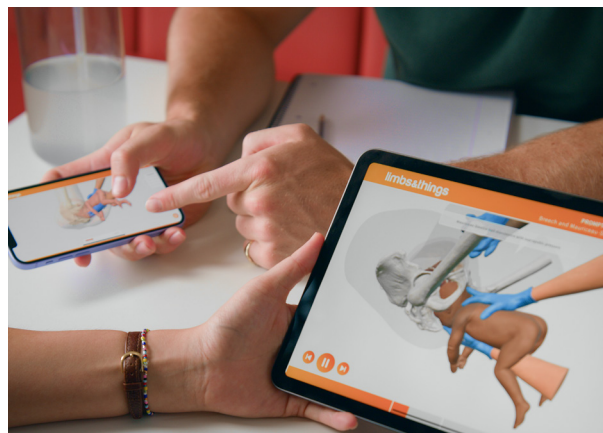
Our series of videos answer your how-to questions on Limbs & Things simulation with useful tips & tricks to get the most out of your models.

BIRTHING SIMULATOR PROMPT FLEX RANGE

The **Birthing Simulator - PROMPT Flex** and its modules are anatomically correct and have been designed in collaboration with clinicians to aid the training and practice of normal and difficult births (including shoulder dystocia) to improve outcomes for mothers and babies during childbirth.



Explore the anatomy of PROMPT Flex outside the classroom and away from the trainer.



Augmented Reality (AR) allows learners to explore the trainer's internal anatomy on their smart device.

Additional modules

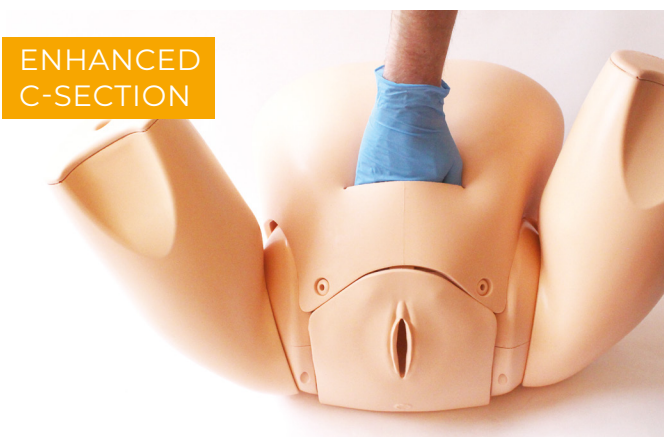
Fit either the Standard or the Advanced units allowing you to tailor your training needs.



PPH



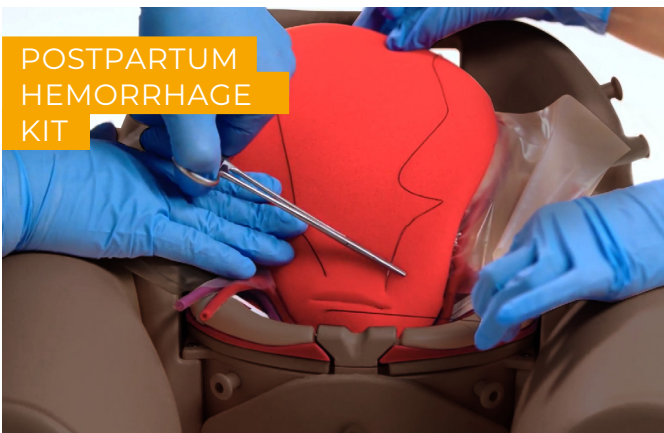
CERVICAL
DILATATION
& EFFACEMENT



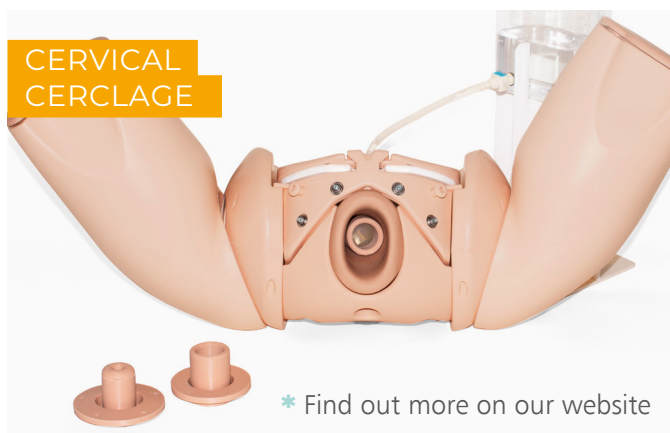
ENHANCED
C-SECTION



ASSISTED
VAGINAL BIRTH



POSTPARTUM
HEMORRHAGE
KIT



CERVICAL
CERCLAGE

* Find out more on our website

Clean Bleed™ Mat

This easy to setup and mess free product has the ability to create the impression of hemorrhages such as postpartum through a controlled flow into a sealed mat.



See page 55 for more details.

Birthing Simulator - PROMPT Flex - Standard

80100

80200

A modular birthing simulator allowing for numerous training scenarios.

Used either for stand-alone training or integrated into hybrid simulation, it is an ideal training solution for all skills relating to routine and difficult deliveries.



This model includes Augmented Reality

Birthing Simulator - PROMPT Flex - Advanced

80106

80206

Incorporates wireless force monitoring where force applied to the baby's head is measured during a shoulder dystocia drill. Works with an app with inbuilt scenarios allowing monitoring and recording of force, interventions made and time taken to deliver the baby.



Tablet not included
Download app at limbsandthings.com



This model includes Augmented Reality

QUALITIES

ANATOMY

- Birth canal & cervix
- Ischial spines & pubic bone
- Gynecoid pelvis
- Articulating thighs
- IM injecting
- Fully articulated baby with detachable umbilical cord & placenta
- Baby includes clavicles, fontanelles & flexible head

KEY FEATURES

- Improved & more realistic pelvic floor
- Articulating thighs for McRoberts procedure
- Stretchable perineum
- Soft flexible birthing canal
- Additional modules to extend learning
- Optional lower legs for extended realism
- Optional wireless force monitoring for training in shoulder dystocia management

SAFETY

- Latex free

CLEANING & CARE

- Skin is washable using soap & water

SKILLS

STANDARD ADVANCED

• Communication & team work skills (SP)	✓	✓
• Normal	✓	✓
• Breech	✓	✓
• Shoulder dystocia management	✓	✓
• Instrumental (forceps & vacuum devices)	✓	✓
• Delivery of placenta	✓	✓
• Cord prolapse	✓	✓
• Urinary catheter placement	✓	✓
• IM injection pads	✓	✓
• Force feedback of baby's head	×	✓
• App with scenarios & force monitoring	×	✓

WHAT'S INCLUDED

STANDARD ADVANCED

Birthing Mother (+Upper Legs)	✓	✓
Standard Baby	✓	×
Wireless Force Monitoring Baby	×	✓
Placenta	✓	✓
Abdomen for PROMPT Flex	✓	✓
Perineum and Birth Canal	✓	✓
Bed Straps	✓	✓
Lubricant	✓	✓
Wheeled Carry Case	✓	✓
Augmented Reality Mat	✓	✓



AUGMENTED REALITY

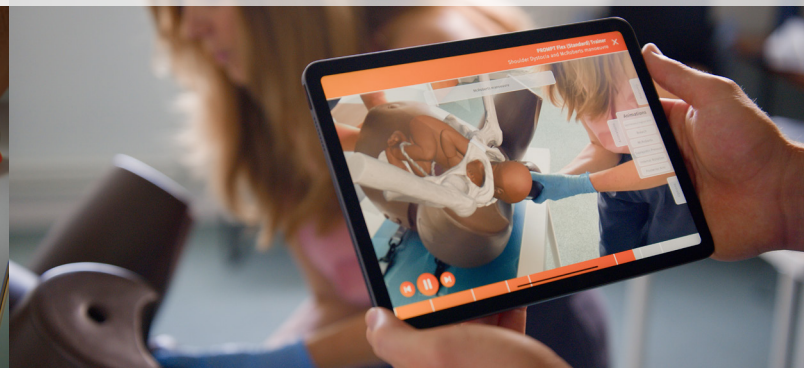
NEW



Interact with PROMPT Flex's internal anatomy on your smart device
No extra or ongoing costs and unlimited users

During independent study

With the trainer in class



By allowing learners to visualize anatomy, Augmented Reality (AR) bridges the knowledge gap between theory and practice.

AR shows how the mother and baby's anatomy behave during different birthing scenarios, breaking down concepts that are difficult to teach into visuals that are easy for students to grasp.

Multiple students can learn at once using AR, while others can get hands on with the trainer, easily creating engaging lessons.

FEATURES

- Interact with the PROMPT Flex internal anatomy
- Visualize different birthing scenarios with animations

VERSATILITY

- Run engaging & memorable lessons
- Multiple students learning at once
- Continued learning away from the model

SPECIFICATIONS

- Included with PROMPT Flex Standard & Advanced
- No extra or ongoing costs
- Unlimited users

Cervical Dilatation & Effacement Module (CD&E) - PROMPT Flex

80102

80202

Allows for training in assessment of both the latent and active first stages of labor.

This versatile module is an optional add-on to the PROMPT Flex Standard or Advanced.



Fetal station adjustment (-3 to +3)

Cervical Dilation (1-10cm)

QUALITIES

REALISM

- Realistic representation of cervixes, including anterior lip, and presenting parts in soft birth canal, with palpable ischial spines

KEY FEATURES

- Inserts to represent early labor cervixes - effacement, dilation and ripeness in line with Bishop's scoring
- Positioning mechanism allows adjustment of station, dilation and tilt without removal from the simulator
- Dynamic positioning mechanism allows adjustment of dilation in active labor
- Markers allow tutor to read positioning in situ
- Numerous presenting part inserts including
 - flexed
 - deflexed
 - brow
 - face
 - breech
 - caput and molding

VERSATILITY

- Presenting parts and cervix can be set up outside the model for demonstration, then placed inside for examination

SAFETY

- Latex free

SKILLS

- Assessment and Bishop's scoring of:
 - Cervical dilation (1-10cm)
 - Cervical effacement (0-100%)
 - Cervical ripeness/consistency (soft, medium, hard)
 - Cervical position (anterior, mid, posterior)
 - Fetal station (-3 to +3)
- Assessment of and artificial rupture of membranes
- Assessment of presenting part - flexed, deflexed, brow, face, breech, caput and molding and caput formation

WHAT'S INCLUDED

Perineum
Pelvic Ring
Static Rig
Dynamic Rig
Set of 7 Latent Labor Cervixes
Dynamic Cervix
Set of 5 Presenting Parts
Set of 2 Difficult Labor Heads
Amniotic Membrane Set
Set of 3 Caputs (x2)

Assisted Vaginal Birth Module (AVB) - PROMPT Flex

80310

80410



This module has been developed to work with PROMPT Flex for the practice instrumental delivery procedures using both ventouse and forceps deliveries.

An innovative design allows the ventouse to realistically adhere to the baby's skin, while inserts within the uterus allow for forceps to be inserted and remain in place while the second blade is positioned and gives a realistic level of resistance whilst delivering the baby.



QUALITIES

REALISM

- Forceps are retained in place once inserted
- Realistic suction when attaching a ventouse
- Realistic resistance when delivering the baby

KEY FEATURES

- Tested with a wide range of instruments used during an assisted birth
- The perineum & inserts are designed specifically to give a realistic resistance during delivery
- Additional Baby Mask allows for successful suction when using a vacuum device
- Uterus holds the baby in the correct positioning, allowing for "hand's free" training can be used for both cephalic & breech deliveries

VERSATILITY

- This module is compatible with the PROMPT Flex Birthing Simulators, PROMPT Flex Baby models & Birthing Mother base units
- Allows for training in operative vaginal births, including: forceps delivery, ventouse delivery (Kiwi™ cup), breech delivery with Pipers forceps

SAFETY

- This product is latex free

SKILLS

- Direct cephalic delivery with the use of both forceps & ventouse
- Forceps – Classical style (Simpson, Elliot, Tucker Mc-Lane etc.)
- Ventouse (Kiwi™ Cup)
- Breech delivery (Pipers forceps)
- Rotational delivery (Kiellands, Kiwi™ cup)
- Other devices (OdonAssist™)
- Teamwork & human factors training in Assisted Vaginal Birth

WHAT'S INCLUDED

Uterus for AVB
Perineum for AVB
Baby Mask for AVB
Foam Inserts for AVB
Foam Uterus Support

Enhanced Cesarean Section Module (ECSM) - PROMPT Flex

80300

80400



Ideal for practicing the necessary skills required when performing both routine and complex cesarean section. Trainees can have exposure to delivering a difficult baby such as an impacted fetal head (IFH), or a transverse lie.

A pre-incised abdomen allows for repeated delivery practice to help improve confidence and familiarity of maneuvers.

The module can be used to practice any of the following methods of delivering a deeply impacted fetal head:

- Manual cephalic extraction maneuvers
- Vaginal push up
- Reverse breech extraction (pull technique)
- Patwardhan's technique

QUALITIES

REALISM

- Abdominal skin has realistic appearance, fat layer & feel of at-term abdomen
- Realistic feel of uterus interior during delivery
- Head & shoulders present at realistic level in relation to the uterine incision

KEY FEATURES

- Uterus holds baby firmly in position for cephalic, breech & transverse presentations
- Fundal pressure can be applied to aid delivery of the baby for IFH maneuvers
- Pre-incised skin allows easy repeat delivery practice
- Realistically mimics the restrictive space of the pelvic inlet for IFH maneuvers
- Accommodates retraction using metal, plastic or rubber retractors

VERSATILITY

- Allows for training in routine & complex cesarean section at full dilation

SAFETY

- Latex free

SKILLS

- Cephalic & breech delivery
- C-section at full dilation:
 - Head disimpaction using vaginal push methods
 - Use of balloon disimpacting device
 - Reverse breech extraction
 - Patwardhan's techniques
- Transverse lie
- Instrument assisted C-section delivery
- Delivery of the placenta for routine C-sections
- Teamwork & human factors training in emergency C-section

WHAT'S INCLUDED

Perineum
 Uterus for Cesarean Section Module
 Impacted Fetal Head Uterus
 Pre-incised Delivery Skin
 Cervix for Cesarean Section Module
 Foam Uterus Support
 Pelvic Floor

Postpartum Hemorrhage Module (PPH) - PROMPT Flex

80101

80201

This module is an optional add-on for the Standard or Advanced Birthing Simulators.

It allows training in the management of post-partum bleeding, and offers a realistic simulation of an atonic and contracting uterus.

PPH Module supports training to meet the Joint Commission requirement that JCAHO accredited facilities conduct maternal safety insitu training including PPH.

QUALITIES

REALISM

- Atonic uterus can simulate contraction on fundal massage

KEY FEATURES

- Blood loss of up to 2 liters can be simulated
- Air bulbs are used to stimulate blood flow & control atonic state of the uterus

VERSATILITY

- Can be quickly & easily fitted into the birthing mother to allow simulation of situations where bleeding occurs directly after delivery

SKILLS

	PPH MODULE	PPH KIT
80101		80112
80201		80212

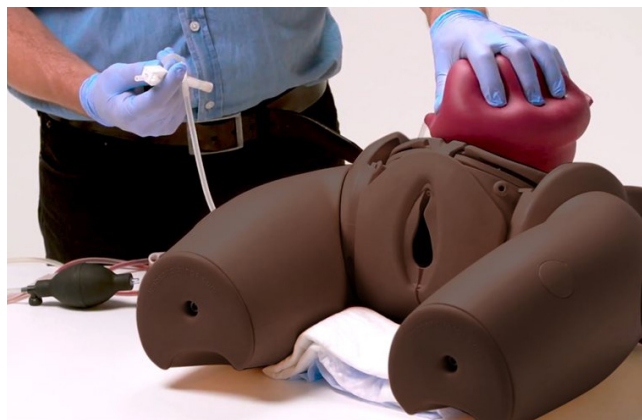
Management of postpartum bleeding:

• Fundal massage	✓	✓
• Bi-manual compression	✓	✓
• Hemostatic balloon insertion & management	✓	✓
• Communications skills with mother	✓	✓
• Intramuscular injection	✓	✓
• Estimating blood loss	✓	✓
• Common types of compression suture	×	✓
• Dissection of broad ligament	×	✓
• Ligation of uterine arteries	×	✓



WHAT'S INCLUDED

PPH Uterus Assembly - PROMPT Flex
Concentrated Venous Blood - Starter Pack (x2)
PPH Blood Container - PROMPT Flex



Maternal Hemorrhage Simulator

80190

80290

Includes the PPH Module and the PROMPT Flex birthing Mother with abdomen skin. Ideal for those without a birthing mother who want to jump into training with the PPH module or those who want an extra PROMPT Flex to create multiple learning stations.

Postpartum Hemorrhage Kit

80112

80212

For the management of postpartum bleeding and care including performing a compression suture and ligating the uterine artery.

KEY FEATURES

- Includes the PPH module
- Has a uterus suitable for all common types of compression sutures
- Practice ligation of the uterine artery
- Dissection of broad ligament



WHAT'S INCLUDED

Postpartum Hemorrhage Module - PROMPT Flex
Compression Suture Uterus (Pack of 2)
Pre-incised Delivery Skin for PROMPT Flex

Clean Bleed® Mat

70400



Integrate blood loss into your birthing scenarios effortlessly



Use the Clean Bleed Mat in conjunction with our PROMPT Flex Birthing Simulator to create realistic hemorrhage scenarios.

Adding blood to birthing simulation encourages trainees to consider blood loss as a key indicator of a patient's condition and practice identifying when different interventions need to be made.

4 WAYS THE CLEAN BLEED MAT MAKES FLUID SIMULATION SIMPLE

- Easy set-up
- Controlled speed: use the dial to adjust flow
- No mess: the bleed is contained in a sealed mat
- Reusable: pads and blood can be used multiple times

SKILLS

- Recognition of blood loss
- Visual assessment of severity
- Perform Quantification of Blood Loss (QBL)
- Initiate interventions
- Evaluate success of interventions

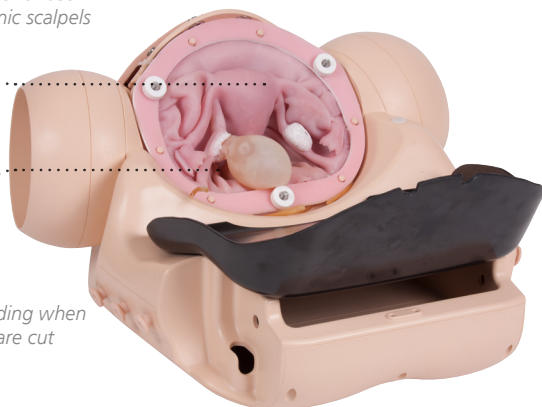
Surgical Female Pelvic Trainer (SFPT) Mk 2

60251

A simulator for training in a wide range of laparoscopic gynecological surgical techniques and procedures. The uterus component can be easily removed and replaced after use.

Compatible for use
with harmonic scalpels

Lifelike bleeding when
arteries are cut



Abdominal Skin with realistic tissue properties for trocar insertion

Realistic representation of uterus & pathologies

QUALITIES

ANATOMY

- Includes:
 - Uterus
 - Cervix
 - Bladder
 - Ovaries
 - Ureters
 - Ovarian artery
 - Dunn's pouch
 - Ovarian cyst
 - Fibroid
 - Cardinal ligament
 - Abdominal skin with realistic tissue properties for trocar insertion
 - Pelvic floor with sympathetic features
 - Vagina
 - External introitus
 - Fallopian tube
 - Broad ligament
 - Uterine artery
 - Pouch of Douglas
 - Bowel and sigmoid
 - Ectopic pregnancy
 - Uterosacral ligament

REALISM

- Insufflation of abdomen is represented

KEY FEATURES

- Provides practice and role playing for gynecological perioperative teams
- Includes a realistic vaginal canal and cervix for inspection, in which a uterine manipulator can be used
- Realistic bleeding when arteries are cut

VERSATILITY

- Compatible for use with harmonic scalpels

SAFETY

- Capsule in uterus contains latex



SKILLS

- All skills relevant to performing the following procedures:
 - Salpingectomy
 - Myomectomy
 - Hysterectomy
 - Salpingostomy
 - Cystectomy
 - Oophorectomy
- Dissection down to & location of ureters
- Insertion & use of uterine manipulator
- Working with various gynecology instruments
- Identification of anatomical landmarks

WHAT'S INCLUDED

SFPT Mk 2 Abdomen
 SFPT Mk 2 Surgical Uterus
 SFPT Mk 2 Abdominal Skin Pad
 SFPT Mk 2 Perineum
 SFPT Mk 2 Bowel
 Venous Blood Starter Kit
 SFPT Mock Blood Kit (includes reservoir and pump)
 Blunt Dispensing Needle and Syringe

CONSUMABLES

60256 SFPT Uterus (x5)
 60257 SFPT Uterus (x10)
 00021 Concentrated Venous Blood

Patents granted

• US6336812 • EP099027 • DE69804793 • CA 2293585
 • ZL98806331 • HK1023832 • 755575 Australia

Midline Perineal Repair Trainer

61140

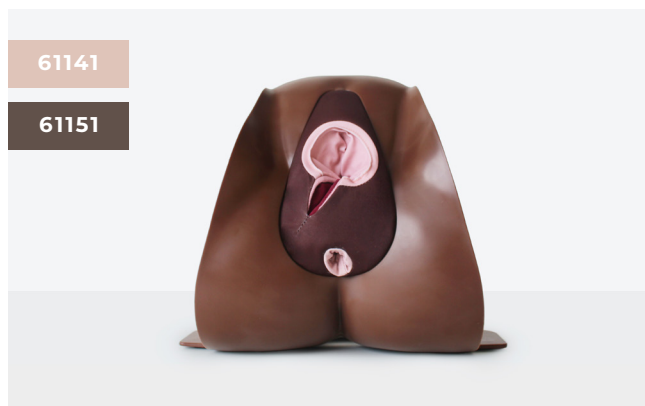
61150



Mediolateral Perineal Repair Trainer

61141

61151



This model allows trainees to learn the suturing techniques for repairing a 1st or 2nd degree perineal repair. The fabric construction can accommodate repeated early learning training ideal for skill acquisition.

SKILLS

- Recognition of internal anatomy
- Tissue handling
- Classification of injury
- Repair of a lacerated perineum

QUALITIES

ANATOMY

- Hymenal remnants, vaginal mucosa, perineal skin, perineal dermis, perineal muscles & palpable anal sphincter

KEY FEATURES

- Durable insert for cost-effective procedural training
- Anatomically accurate, key anatomical layers can be sutured
- Illustration pack representing each degree of perineal trauma to aid identification of key landmarks & internal anatomy

VERSATILITY

- Can be used alongside PROMPT Flex by placing in front of the birthing mother to add further realism
- Quick & easy to set up
- Clamps provided to secure trainer to benchtop
- Compact & portable
- Available in either Midline or Mediolateral presentation for regional variation

WHAT'S INCLUDED

- Midline Repair Pad (x1) **OR** Mediolateral Repair Pad (x1)
- Perineal Repair Stand with Clamps
- Perineal Repair Block Loading Frame
- Perineal Repair Illustration Pack

Anal Sphincter Repair Trainer



This model allows trainees to learn how to perform a 4th degree perineal repair. A stand accommodates one anal sphincter repair block.

SKILLS

- Recognition of internal anatomy
- Tissue handling
- End-to-end repair of the external anal sphincter
- Overlap repair of the external anal sphincter
- Repair of the internal anal sphincter & anal mucosa

QUALITIES

ANATOMY

- Hymenal remnants, vaginal mucosa, perineal skin, perineal muscles, external anal sphincter, internal anal sphincter, anal mucosa & pararectal fat

REALISM

- Soft skin with a similar drag & strength to human skin

KEY FEATURES

- Anatomically accurate, all key anatomical layers can be sutured
- Illustration pack representing each degree of perineal trauma to aid identification of key landmarks and internal anatomy

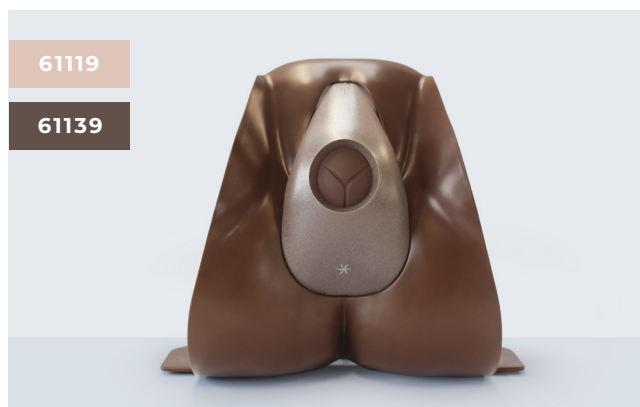
VERSATILITY

- Can be used with a simulated patient
- Quick & easy to set up
- Clamps provided to secure trainer to benchtop
- Compact & portable

WHAT'S INCLUDED

Anal Sphincter Repair Block (x2)
Perineal Repair Stand with Clamps
Perineal Repair Block Loading Frame
Perineal Repair Illustration Pack
Water Based Lubricant

Episiotomy Trainer



This cost effective model is designed to be used with the Perineal Stand in a classroom setting to ensure acquisition of confidence in the training of episiotomy.

It offers repeatable training and contains an illustration pack that supports trainees in gaining confidence in performing this procedure.

SKILLS

- Identification of fontanelles
- Handling of a stretched perineum
- Reducing the risk of damaging the baby or mother
- Infiltration of perineum prior to episiotomy
- Performance of mediolateral (or midline) episiotomy
- Use of instruments

QUALITIES

REALISM

- Realistic representation of tissue to represent a stretched perineum

KEY FEATURES

- Baby head has realistic look and feel, providing landmarks and appropriate tactile response when inserting fingers to guard the baby's head
- Repair tape increases the longevity of the episiotomy pad, allowing for multiple uses per pad
- Illustration pack to help trainees get familiarized with key landmarks and where to place the cut

WHAT'S INCLUDED

Episiotomy Incision Pad (x2)
Perineal Repair Stand with Clamps
Episiotomy Repair Tape (x24)
Episiotomy Baby Head
Episiotomy Illustration Pack

Infant Hip Exam

42000

42010

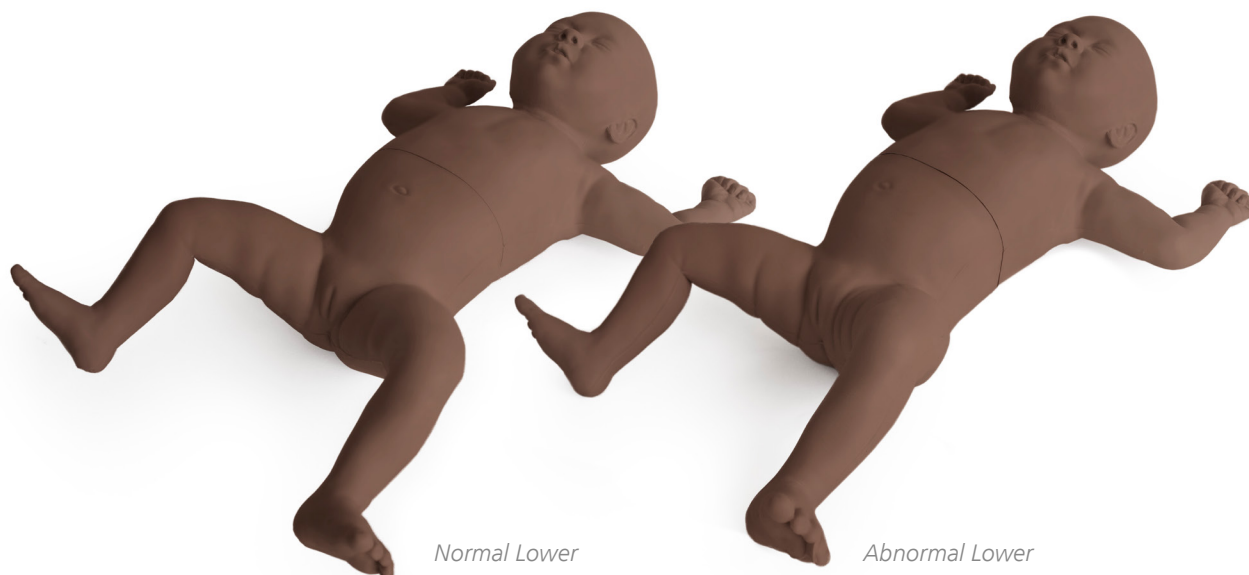
42004

42014



Our Infant Hip Exam (IHE) Trainer has been designed to meet the specific requirements of healthcare professionals training to identify and diagnose developmental dysplasia of the hip (DDH). This simulator represents a 1-month-old female and can simulate a normal, dislocated and

dis-locatable or 'lax' hip joint, allowing for practice of Barlow and Ortolani maneuvers as well as the Galeazzi sign. The baby has been designed with interchangeable normal and abnormal leg modules and one upper torso.



QUALITIES

ANATOMY

- Palpable greater trochanter on the left and right femurs to aid correct hand placement
- Articulating hip, knee and ankle joints for the Barlow and Ortolani maneuvers and Galeazzi sign

REALISM

- Realistic 'clunk' can be felt when resetting the dislocated hip
- Anatomically accurate 1 month old female infant

KEY FEATURES

- Quick and easy to set up
- Durable model that allows for repeated training using the Barlow and Ortolani maneuvers
- Normal hip module – allows trainees to understand the haptics of a normal hip
- Abnormal hip module - one hip that is dislocated and can be maneuvered into and out of the correct position using the Barlow/ Ortolani technique and one dis-locatable or 'lax' hip that can be dislocated and relocated when using the Barlow/ Ortolani technique
- Articulating knee and ankle joints mean the baby's feet can be placed flat replicating the Galeazzi sign

VERSATILITY

- Interchangeable lower modules allow trainees to recognize normal hips as well as two types of abnormal hip joint

SAFETY

- Latex free

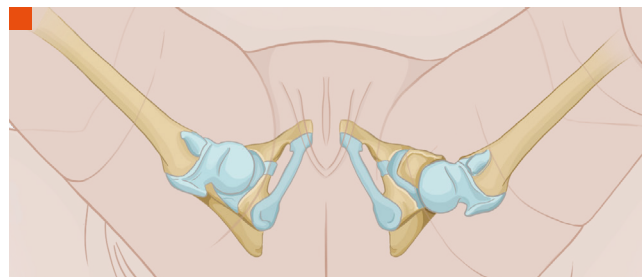


Illustration of internal hips and how they present in the model
Barlow maneuver
Galeazzi sign

WHAT'S INCLUDED

	42000 42010	42004 42014
IHE Upper	✓	✓(x2)
IHE Lower Normal	✓	✓
IHE Lower Abnormal	✓	✓
IHE Illustration Card	✓	✓

TruBaby X

TCTB10001X

TCTB10001XDS

TruBaby X provides a complete solution for pediatric clinical skills training. It is an ideal model for practicing Directly Observed Practical Skills (DOPS), Pediatric Advanced Life Support (PALS) and critical emergency medicine including infant airway management, CPR, IV cannulation, chest decompression and lumbar puncture.

TruBaby X Lite

TCTBL10001X

TCTBL10001XDS

TruBaby X Lite offers a focused training experience for beginners, and experienced learners looking to refresh their pediatric practical skills.

SKILLS	Lite	TruBaby X
Airway management	✓	✓
CPR	✓	✓
IO tibia	✓	✓
Peripheral venous cannulation	✓	✓
Urethral Catheterization (male & female)	✓	✓
Intramuscular injection	✓	✓
Lumbar puncture	×	✓
Needle decompression & chest drain	×	✓

+ trucorp



■ Airway Intubation
■ IV cannula insertion
■ Foley urinary Catheterization
■ Lumbar puncture

Pediatric Lumbar Puncture Simulator II

KKM43D

KYOTO KAGAKU

Designed to represent a 7 to 10-month-old infant, this model is used to practice the lumbar puncture procedure.

QUALITIES

KEY FEATURES

- Realistic tissue resistance
- Iliac crests & spinous process are present & palpable

VERSATILITY

- Puncture block is quick & easy to replace
- Puncture sites not visible on skin
- Successful puncture is confirmed by the simulated CSF (water) flowing out
- CSF pressure can be measured with a manometer
- Variation of puncture depth



SKILLS

- Skin preparation
- Patient positioning
- Palpation of landmarks
- Sterilization & local anesthesia
- Needle positioning & insertion
- Cerebrospinal fluid (CSF) collection & pressure measurement

Nickie® Medical Training Doll

FEMALE	MALE
HOL-WF	HOL-WM
HOL-HF	HOL-HM
HOL-BF	HOL-BM

Nickie® is used to practice medical device training for special medical needs children. Nurses and paramedics can use it to train school and hospital staff, as well as parents and home care providers.

Available as a male or female, and in a range of skin tones to support inclusive training, the Nickie® Medical Training Doll is the ideal medical device training model.



SKILLS

- Tracheostomy management
- Tracheal tube suctioning
- Gastrostomy training
- Care of a gastrostomy button
- Urethral catheter insertion
- Stoma care
- Oral suctioning
- Peripherally Inserted Central Catheter (PICC) line care

QUALITIES

REALISM

- Ileostomy stoma is in the lower right abdomen
- Open oral and nasal passages

KEY FEATURES

- Gastrostomy device and feeding tube is included
- A tracheostomy tube is inserted and secured with a standard tracheostomy tube holder
- A PICC is positioned in the forearm and secured with a 'Stat-Lock'
- Injection port on the left thigh
- Fluid drain in the left heel
- Anus is sized for a Diastat syringe



WHAT'S INCLUDED

- Nickie® training doll
- Shiley tracheostomy tube
- Mic-Key gastrostomy button
- Ambu Bag
- Tracheostomy suction catheter
- Gastrostomy feeding tube
- Syringe for gastrostomy button inflation/deflation
- Intermittent urethral catheter
- LMA Nasal Atomizer
- Descriptive booklet & carry case

Please note: Hands on Learning products are currently not available for purchase in Canada.

Elbow for Joint Injection

30083



For practicing soft tissue joint injection used for the treatment of injuries and arthritis. The arm is presented for the treatment of both golfer's and tennis elbow.

SKILLS

- Patient posture & management
- Palpation techniques
- Identifying anatomical landmarks & painful areas
- Injections for:
 - Tennis elbow (lateral epicondylitis)
 - Golfer's elbow (medial epicondylitis)
- Training in fan or cone infiltration techniques

QUALITIES

REALISM

- Flexed right elbow, which rotates on the stand

KEY FEATURES

- Easy-to-use feedback Console: LEDs light up when correct injection sites have been acquired, point of maximal tenderness has been palpated & when the ulnar nerve has been hit

VERSATILITY

- Supplied with 'No Trace' marker (non-permanent rapidly fading ink) for illustrating underlying anatomical landmarks

SAFETY

- Latex free

WHAT'S INCLUDED

'No-Trace' Marker
Elbow Needle Set
Elbow Skin
Elbow for Joint Injection
Feedback Console with batteries

Foot & Ankle for Joint Injection

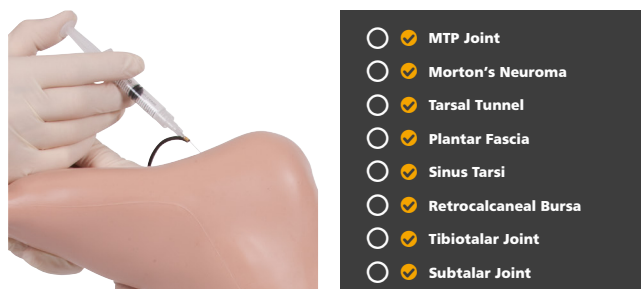
30100



A foot and ankle for practicing soft tissue injection for the treatment of injuries and arthritis. Designed in collaboration with Mr Jim Pickard and Dr Chris Davies from the University of Huddersfield, UK.

SKILLS

- Patient posture & management
- Palpation techniques
- Identifying anatomical landmarks
- Injection sites for:
 - Metatarsophalangeal (MTP) joint
 - Tarsal tunnel
 - Sinus tarsi
 - Tibiotalar joint
 - Morton's neuroma
 - Plantar fascia
 - Retrocalcaneal bursa
 - Subtalar joint



QUALITIES

ANATOMY

- Represents normal anatomy as required for palpation purposes

KEY FEATURES

- Easy-to-use feedback console: LEDs light up when correct injection sites have been acquired

SAFETY

- Latex free

WHAT'S INCLUDED

Foot & Ankle Needle Set
Foot & Ankle Skin
Foot & Ankle Musculature
Foot & Ankle for Joint Injection
Feedback Console with Batteries

SHOULDER INJECTION TRAINER RANGE

This range combines physical practice with the guidance of technology. It provides a repeatable teaching and training platform for shoulder injections in the 4 most common sites.

Both models share a common torso but offer different levels of complexity to support trainees from early learning through to specialist level.

Shoulder Injection Trainer - Palpation Guided

70201

70220

70200*

70219*

*With tablet included

The accompanying Android app allows learners and teachers to visualize the underlying anatomy, as well as clearly signalling success.

SKILLS

- Practice multiple approaches to specific sites
- Identification of anatomical landmarks using palpation guidance
- 4 common injection sites:
 - Acromioclavicular joint
 - Glenohumeral joint
 - Bicipital groove
 - Subacromial space
- Rotation of the shoulder to locate head of the humerus

QUALITIES

REALISM

- Discrete muscle & skin layers for realistic needle feel

KEY FEATURES

- Palpation to find the four most common injection sites
- Instant feedback for the trainee when a site is correctly located
- Injections from multiple approaches to allow for different preferences
- Suitable for postgraduate learning
- App features full 360-degree view of underlying anatomy & injection sites to aid learning
- Cost effective replacement skins

VERSATILITY

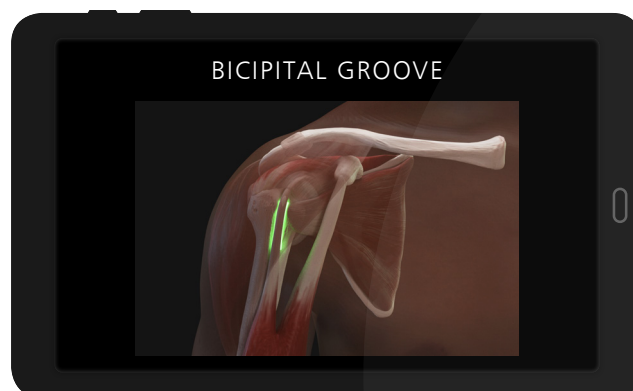
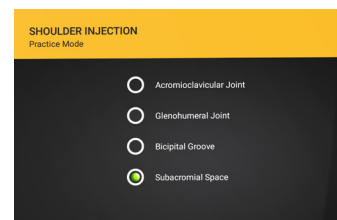
- Each skin can withstand up to 500 injections per site
- Simple bluetooth connection between app & trainer
- Requires a 21 gauge needle (supplied)
- Batteries (2 x AA supplied) last for up to 500 hours

SAFETY

- Latex free

WHAT'S INCLUDED

Shoulder Module - Palpation Guided
 Shoulder Skin (x1 spare)
 Shoulder Torso
 Needle Set
 Android Tablet (optional)
 Elbow
 AA Batteries (x2)
 Carry Case



The application includes interactive shoulder anatomy and links to injection technique guides.

Shoulder Injection Trainer - Ultrasound Guided

70202

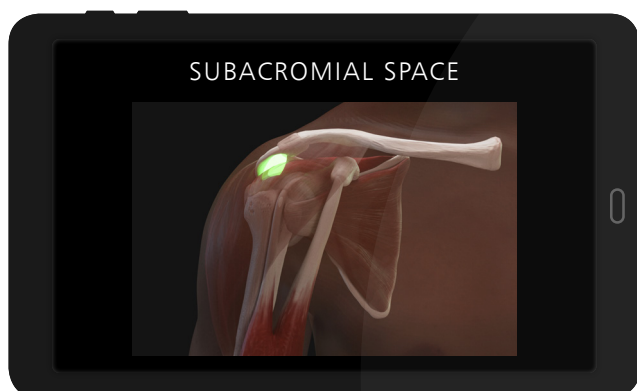
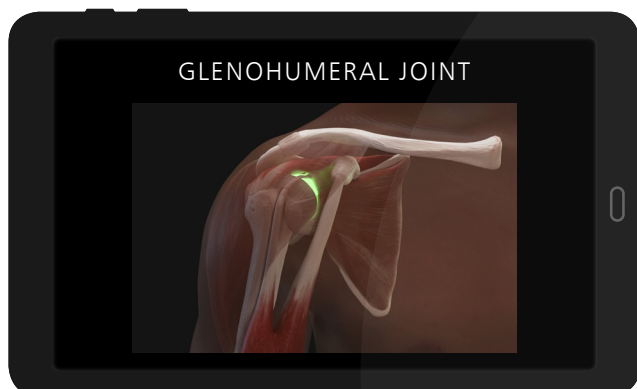
70221



Caters for ultrasound guided techniques, as well as allowing injection and aspiration of fluids under ultrasound.

SKILLS

- Patient positioning & management
- Identification of anatomical landmarks using ultrasound guidance
- 4 common injection sites:
 - Acromioclavicular joint
 - Glenohumeral joint
 - Biceps tendon sheath (which lies in the bicipital groove and surrounds the tendon)
 - Subdeltoid bursa (in the subacromial space)
- Competence using ultrasound technology to perform injections in different planes using different approaches
- View the suprascapular nerve under ultrasound



QUALITIES

REALISM

- Innovative materials within the shoulder create close to life ultrasound images

KEY FEATURES

- Echolucent materials visible under ultrasound represent the key internal landmarks
- Successful injection or aspiration can be confirmed by visualizing fluid entering or leaving the site
- The quantity of fluid in the subdeltoid bursa can be adjusted, from no fluid present to a fluid-filled distension for differing skill levels
- Nerve block functionality - allows trainees to view & inject around the suprascapular nerve

VERSATILITY

- Watertight and durable for up to 400 injections per site
- Altering the size of the bursa allows trainers to change the level of training difficulty (less fluid is more challenging to inject)
- Synovial fluid has a realistic color

SAFETY

- Latex free

WHAT'S INCLUDED

Shoulder Module - Ultrasound Guided
 Shoulder Torso
 Needle Set
 Synovial Fluid (250ml)
 Elbow
 Ultrasound gel
 Carry Case

Knee Aspiration & Injection Trainer with Ultrasound Capability

70103

70114



An anatomically accurate adult knee model for aspiration of synovial fluid and joint injection from both the lateral and medial aspects, using ultrasound-guidance or palpation.

The robust sealed knee includes knee joint, patella, patellar tendon and the suprapatellar space.

SKILLS

- Injection into joint cavity
- Aspiration of synovial fluid from both the lateral & medial aspects
- Competence using ultrasound technology to perform systematic scanning techniques & examination of the knee joint
- Identification of anatomical landmarks using ultrasound guidance or the palpation method
- Patient positioning & management
- Recognition of joint effusion
- Ballottement of the patella



ANATOMY

- Key anatomical landmarks are realistic to palpate:
 - Skin
 - Subcutaneous fat, quadriceps tendon & patellar ligament
 - Prefemoral, suprapatellar & hofa (infrapatellar) fat pad
 - Femur
 - Medial & lateral collateral ligament
 - Tibia
 - Patella
 - Joint space & synovial recess
 - Meniscus
 - Muscle mass of quadriceps



Key internal landmarks visible under ultrasound

QUALITIES

REALISM

- Discrete muscle & skin layers provide realistic tissue & needle response
- Anatomically accurate synovial sac & palpable patella
- Realistic color & consistency of synovial fluid

KEY FEATURES

- 1000+ stabs per module with 21 gauge needle
- Precise, palpable anatomy with bony landmarks
- Robust, sealed knee unit that holds all anatomy
- Key internal landmarks visible under ultrasound
- Compatible with all standard ultrasound machines
- Echolucent material allows aspiration & injection under ultrasound-guidance
- Suitable for undergraduate & postgraduate medical study
- Knee skin is watertight

VERSATILITY

- Caters for ultrasound-guided technique as well as palpation
- Can be used with leg supports for supine position, or without leg supports for side of bed position
- Separate fluid bag & stand ensure the model is easy to use and mobile
- Indicator on fluid bag to prevent overfilling

SAFETY

- Latex free

WHAT'S INCLUDED

Ultrasound Knee Module for Aspiration & Injection

Fluid Bag & Stand

Synovial Fluid (including Syringe)

Needle Set – 3 Green Needles, 1 Syringe, 1 Sharps Bin

Leg Unit, including Removable Supports

Carry Case

Hand & Wrist Injection Trainer

70230*

70232

*With tablet
included

Suitable for all levels of training, the Hand & Wrist Injection Trainer allows trainees and clinicians to practice and teach injections in five different locations (carpal tunnel, De Quervain's sheath, trigger finger, first carpometacarpal joint and the distal radioulnar joint). The model also highlights when incorrectly injected, ensuring trainees learn to avoid the median nerve.

The trainer comes equipped with an optional Android tablet, which works in unison with our newly developed app. The app, coupled with innovative sensory technology, provides learners with wireless, real-time feedback from the procedure.

SKILLS

- Model allows for injection into:
 - Carpal tunnel
 - De Quervain's sheath
 - Trigger finger
 - 1st carpometacarpal joint
 - Distal radioulnar joint
- Patient positioning & management
- Identification of anatomical landmarks

ANATOMY

- Injection sites:
 - Carpal tunnel
 - De Quervain's sheath
 - Trigger finger
 - First carpometacarpal joint
 - Distal radioulnar joint
 - Median nerve
- Bone structures:
 - Radial styloid
 - Ulnar styloid
 - Trapezius and scaphoid
 - First carpometacarpal joint space
 - Distal radioulnar joint space
 - Lister's tubercle
- Internal product anatomy:
 - Palmaris longus
 - Flexor carpi radialis
 - Extensor digitorum group
 - Extensor digiti minimi
 - Abductor pollicis longus
 - Extensor pollicis brevis
 - Extensor pollicis longus



QUALITIES

REALISM

- Interactive model anatomy
- Anatomically correct
- Includes important ligament & skeletal structures

KEY FEATURES

- Facilitates injection in 5 key sites
- Presence of median nerve allows for negative feedback
- New app provides interactive real-time feedback
- Each site can withstand over 200 injections
- Skin can be easily removed & changed

VERSATILITY

- Lightweight & easily portable
- App can be set to English UK, English USA, French, Mandarin, Spanish, German & Russian

CLEANING & CARE

- Skin surface is washable using soap & water

SAFETY

- Fluid should not be injected into any of the sites, due to the electronics contained
- Latex free

WHAT'S INCLUDED

- Hand & Wrist Model
- Hand & Wrist Skin (1x spare)
- Android Tablet (optional)
- Needle Set – 3 Orange Needles, 1 Syringe, 1 Sharps Bin
- AA Batteries (x2)

Pressure Sores Simulator

KKMW63

KYOTO KAGAKU



KKMW63 Pressure Sores Simulator is a decubitus care skills trainer for the new era. Its detailed representation allows for a wide range of training scenarios, including sore assessment, ultrasound assessment of deep tissue injury and necrotic tissue removal.

SKILLS

- Characterization of pressure sores
- Assessment of deep tissue in sciatic area by ultrasound
- Prevention & treatment of pressure ulcers / cleansing /dressing
- Debridement of necrotic tissue

Seymour II Wound Care Model™

VTA0910

VTA0920

VATA

Based on a 74-year-old patient, this model aids in the identification and assessment of wounds. Once the different etiologies are understood, it can be used to discuss and devise treatment plans.

SKILLS

- Wound assessment (classification & staging)
- Wound cleansing
- Dressing techniques
- Measurement of wound length, depth, undermining & tunnelling
- Negative pressure wound therapy

Freddie Fistula™ Skills Trainer

VTA0230

VATA

This realistic skills trainer facilitates the instruction and practice of the management of open abdominal wounds with active fistulas.

SKILLS

- Competency & confidence in stoma identification
- Identifying the source of effluent flow
- Management of drainage
- Employment of wound dressing materials & techniques (including negative pressure wound therapy)

'Wilma' Wound Foot™

VTA0950

VTA0955

VATA

Based on an 80-year-old patient for a true-to-life appearance, the model offers 20 conditions which allow for the identification and staging of wounds and their probable causes.

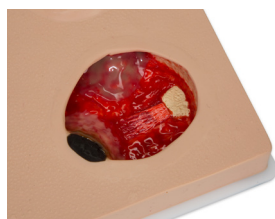
SKILLS

- Wound assessment
- Routine cleansing
- Dressing techniques

Pat Pressure Ulcer Staging Model

VTA0980

A unique, compact, comprehensive and realistic model displaying a range of pressure injuries. Recognition, routine cleansing and dressing changes can be taught and practiced on all wounds.



Medical Footcare Model

KKM66

KYOTO KAGAKU

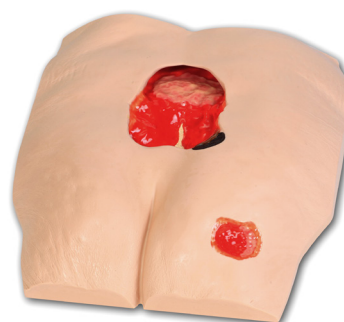


Stan Stage IV Pressure Injury Model™

VTA0970

VTA0975

VATA



Annie Arterial Insufficiency Leg Model

VTA0555

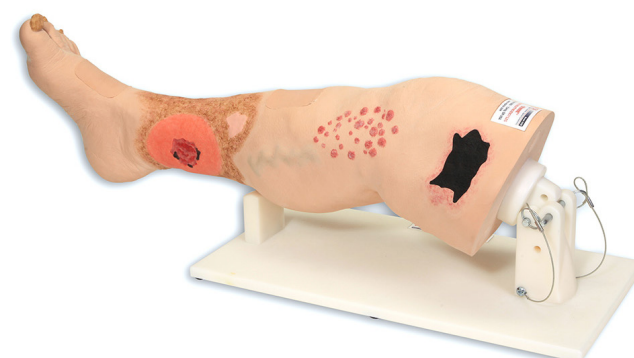
VATA



Vinnie Venous Insufficiency Leg Model

VTA0550

VATA



Please note: Vata products are currently not available for purchase in Canada.

eoSim™

The eoSim™ range of Laparoscopic box trainers allows trainees to practice their laparoscopic skills on a range of up to 18 curated tasks. Each box comes complete with four modular task bases, Laparoscopic instruments, an integrated digital camera and rechargeable light-source.



QUALITIES

KEY FEATURES

- Portable brief-case design for maximum portability
- Comes with everything you need
- Quick & easy to set up trainer
- Easily interchanged tasks
- Works with mobiles & tablets
- Built-in HD webcam for use with PC or Mac

SKILLS

- Minimally invasive surgery
- Psycho-motor skills associated with laparoscopic surgery
- Instrument handling
- Includes 18 different tasks to practice

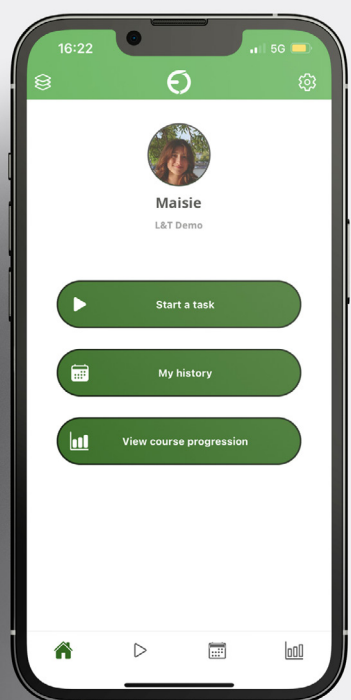


WHAT'S INCLUDED

		EOSIM ELITE EO003	EOSIM INSTITUTION EO008	EOSIM INSTITUTION PLUS EO009
Box	eoSim Box Trainer (includes Camera and LED Light)	✓	✓	✓
Instruments	5mm Ratcheted Grasper	✓	✓	✓
	5mm Non-Ratcheted Grasper	✓	✓	✓
	5mm Scissors	✓	✓	✓
	5mm Knot Pusher	✓	✓	✓
	5mm Needle Holder	✓	✓	✓
Hardware	22 inch Monitor	×	✓	✓
	USB-C to HDMI Cable	×	✓	✓
	Lightning to HDMI Cable	×	✓	✓
	Height Adjustable Trolley	×	×	✓
SurgTrac Modules	SurgTrac Elite – 18 Tasks	✓	✓	✓

SurgTrac™

SurgTrac™ is an integrated skills training platform designed by surgeons, for surgeons. Mirroring Kolb's experiential learning circle, SurgTrac offers a curriculum of skills, instrument tracking software, objective performance feedback and metrics synced to an online portfolio, all through your mobile device.



QUALITIES

KEY FEATURES

- Instrument tracking software records 20 metrics, generating instant quantitative performance feedback
- Additional formative, natural language feedback to support self-directed development
- Video recording of task attempts, which can be submitted for remote assessment by surgical trainers
- Evidence-backed by over 30 peer-reviewed validation studies
- Institutions can easily manage learner access and create groups using SurgTrac™ Manager

VERSATILITY

- Tiered curricula for advancing skill levels
- Curated courses of tasks for surgical specialties
- Available on iOS, Android, Windows & MacOS
- Connect with your colleagues & classmates in groups
- Invite trainees & track their progress on group dashboards
- Assign assessors to grade task submissions and track development



SKILLS

COURSE	TASKS	
CORE	Dice stacking	Precision cutting (paper)
	Paper fold	Thread transfer
	Peg capping	Paper clip untangle
ADVANCED	Tube ligation	Paper peg thread
	Thread pull	Peg ligate
	Cyst dissection	Tube thread
ELITE	Intracorporeal suture & tie	Slip knot & patch
	Anastomosis (continuous)	Anastomosis (interrupted)
	Precision suture	Horizontal suture

FUNDAMENTALS OF LAPAROSCOPIC SURGERY™

Approved by the SAGES-ACS FLS Committee, the FLS trainer system is the only approved hands-on equipment for training and assessment.

FLS is a joint educational offering of the American College of Surgeons (ACS) and the Society of American Gastrointestinal and Endoscopic Surgeons (SAGES). The FLS trainer system is appropriate for learning fundamental skills needed in many laparoscopic surgery specialties, including general surgery, gynecology and urology.

The systems are complete with training box and TV camera alongside a range of tasks designed to develop the skills necessary to perform the fundamentals of laparoscopic surgery.



QUALITIES

- Skin frame constructed from durable neoprene
- 2 pre-incised holes for the trocars
- Trainer systems come with a TV camera
- Trainer design allows for ambient light to enter the training area
- Overhead LED lighting strip

SKILLS

- Laparoscopic surgery
- Tasks:
 - Peg transfer
 - Precision cutting
 - Ligating loop
 - Intra- and Extra-corporeal Knot Tying

FLS Trainer Box with TV Camera

50302

This product is economical and portable, making it ideal for training centers.



Visit fls-products.com for more information about a range of tasks



Note that users must provide their own TV screen

FLS Trainer System

50304

The FLS Trainer System incorporates all of the features of the FLS Trainer Box but also includes a 19" Television Screen and a Mobile SimCart.

This product offers greater flexibility and is an extremely cost effective option for training centers.



FLS All-In-One Trainer System

50306

The FLS All-In-One Trainer System incorporates all of the features of the FLS Trainer System and also includes ligating loops, sutures and an FLS Approved Instrument Kit.

This product provides a training center with everything required to run an FLS Training program.



Advanced Training in Laparoscopic Suturing (ATLAS)

50400

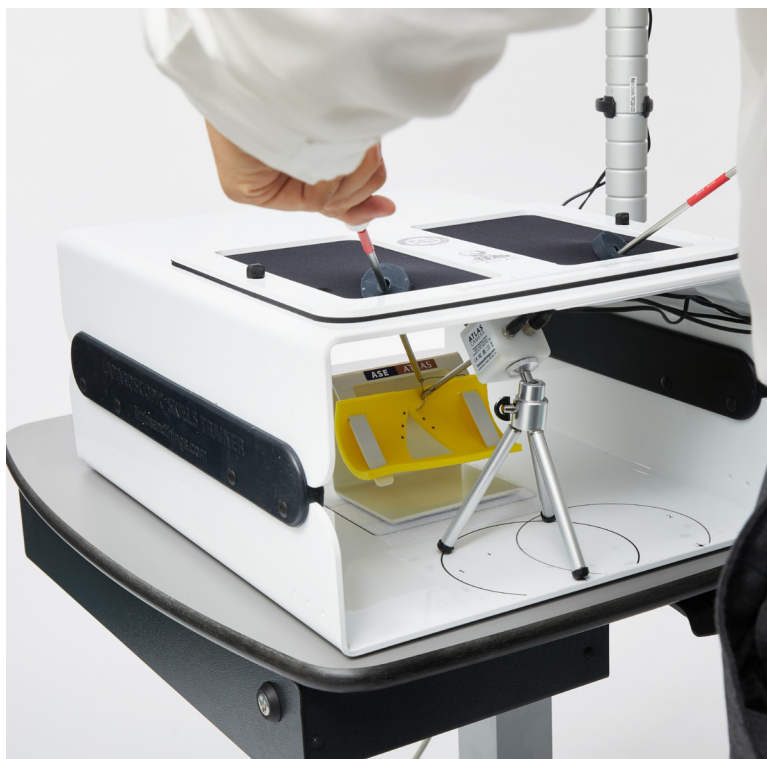
The brand-new Advanced Training in Laparoscopic Suturing (ATLAS) training kit is a laparoscopic surgery simulator designed to deliver high level minimally invasive suturing training.

This unique trainer helps to prepare surgeons for all forms of laparoscopic surgery, including those where the angle of view and allowance of suturing space is more restrictive.

ATLAS facilitates six task modules that act as a benchmark for minimally invasive training and progression:

- Needle handling and positioning
- Forehand suturing
- Backhand suturing
- Confined space suturing
- Suturing under tension
- Continuous suturing

See our website for the only ATLAS approved kits for training and assessment.



Want to see our trainers in action?



Click on the Play icons on the product pages to watch a product video or head to the webpage.

UNDERGRADUATE MEDICINE

Designed to meet the core training needs and essential skills required at undergraduate level.

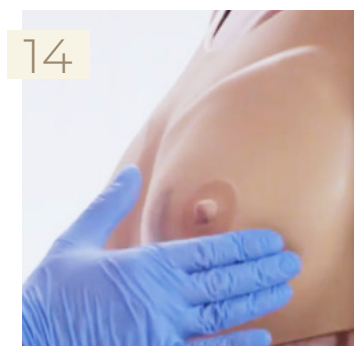
MALE RECTAL EXAMINATION



ABDOMINAL EXAMINATION



BREAST EXAMINATION



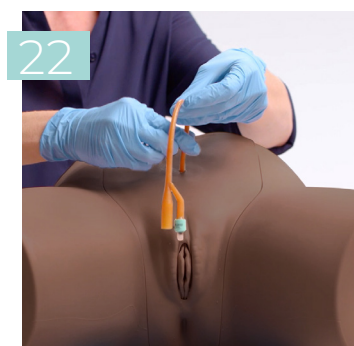
FEMALE PELVIC EXAMINATION



MALE PELVIC EXAMINATION



CATHETERIZATION



VENIPUNCTURE



ARTERIAL PUNCTURE WRIST



CaRE



BASIC SURGICAL SKILLS



OPHTHALMOLOGY & OTOTOLOGY



JOINT INJECTION



NURSE TRAINING

Nursing is at the heart of healthcare, and these products reflect the core simulation training needs required for undergraduate and postgraduate nursing.

CaRE

8



PELVIC EXAMINATION

12



BREAST EXAMINATION

14



MALE RECTAL EXAMINATION

16



ABDOMINAL EXAMINATION

10



VENIPUNCTURE

40



PATIENT CARE

44



INJECTION TECHNIQUE

42



CATHETERIZATION

22



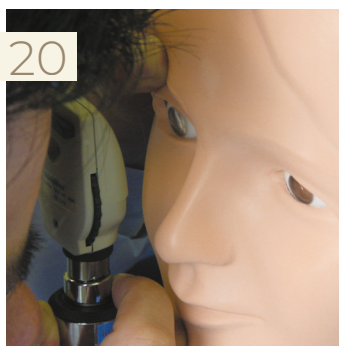
WOUND CARE

72



OPHTHALMOLOGY & OTOLOGY

20



AIRWAY MANAGEMENT

32



POCUS

For training in ultrasound guided procedures, the range is made of materials similar to human tissue, allowing trainees to practice advanced visualizing or injecting techniques while using ultrasound imaging for accuracy.

SUPRAPUBIC CATHETERIZATION



ULTRASOUND EPIDURAL



TRUIV BLOCK



PARACENTESIS TRAINER



CHEST TRAUMA MANAGEMENT



ARTERIAL PUNCTURE WRIST



SHOULDER - ULTRASOUND GUIDED



KNEE - ULTRASOUND CAPABILITY



ULTRASOUND VASCULAR ACCESS



TRUCVC



ULTRASOUND GUIDED PICC



ULTRASOUND PERICARDIOCENTESIS



ATLS

This range offers a cost effective solution to the simulation equipment needed for ATLS 11th Edition making it easy for training providers to deliver this course.

CHEST TRAUMA MANAGEMENT

26



AIRSIM DIFFICULT AIRWAY

34



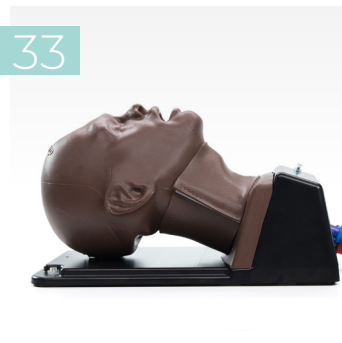
AIRSIM ADVANCE X

33



AIRSIM COMBO X

33



AIRSIM BABY X

34



SMART AIRWAY CHILD

32



SMART AIRWAY ADULT

32



EMS

From patient assessment and basic care, to more advanced skills, this range covers essential training elements required for emergency medicine training.

CLEAN BLEED MAT



ABDOMINAL EXAMINATION



VENIPUNCTURE ARM RANGE



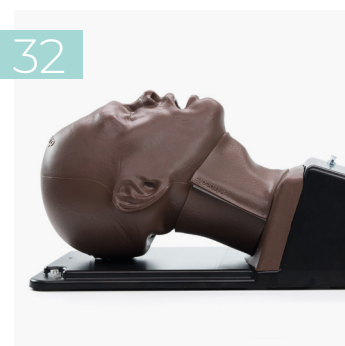
CHEST TRAUMA MANAGEMENT



INJECTIONS



AIRWAY MANAGEMENT



TRUCVC



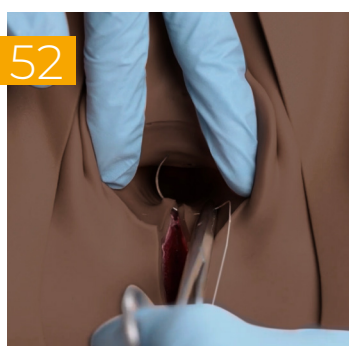
TRUIV BLOCK



TRUWOUND



OBSTETRICS & MIDWIFERY



JOINT INJECTIONS



TOURNIQUET



OSCE TRAINING

It's important students feel confident taking the Objective Structured Clinical Examination. These products are designed to train and test clinical skill performance for the OSCE.

MALE RECTAL EXAMINATION



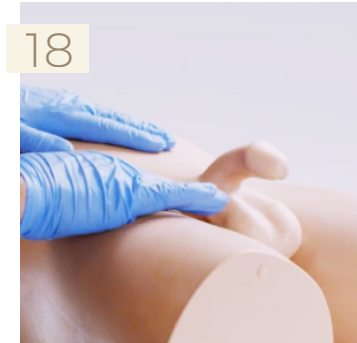
ABDOMINAL EXAMINATION



BREAST EXAMINATION



PELVIC EXAMINATION



CATHETERIZATION



VENIPUNCTURE



TUBE FEEDING



PATIENT CARE



LUMBAR PUNCTURE & EPIDURAL



ARTERIAL PUNCTURE WRIST



PEDIATRICS



CaRE



PHYSICIAN ASSISTANT

Designed to cover the broad set of skills required from Physician Assistants. Including physical examinations, diagnosing illnesses, care coordination and a variety of procedures.

MALE RECTAL EXAMINATION



CaRE



FEMALE PELVIC EXAMINATION



ABDOMINAL EXAMINATION



MALE PELVIC EXAMINATION



BREAST EXAMINATION



VENIPUNCTURE



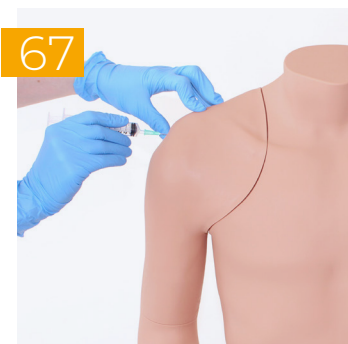
ARTERIAL PUNCTURE WRIST



CATHETERIZATION



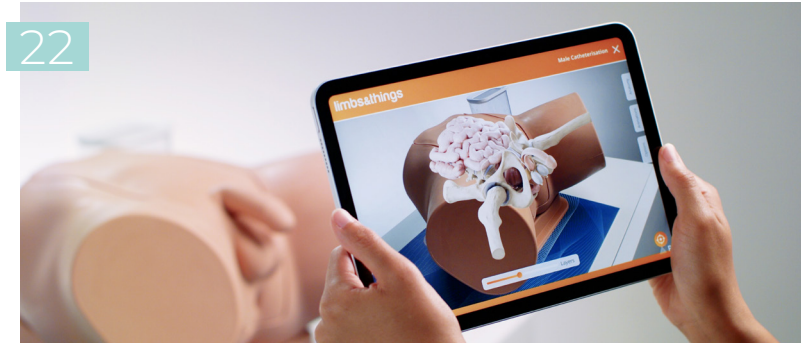
JOINT INJECTION



AUGMENTED REALITY (AR)

AR bridges the knowledge gap between theory and practice by allowing users to interact with the trainer's anatomy on their smart device. Discover our compatible models below, or find out how AR enhances learning on Page 6.

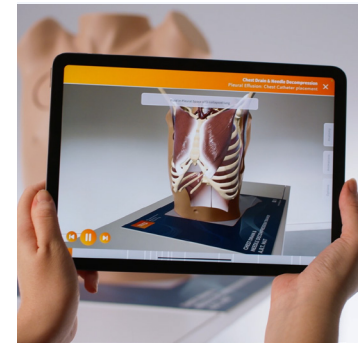
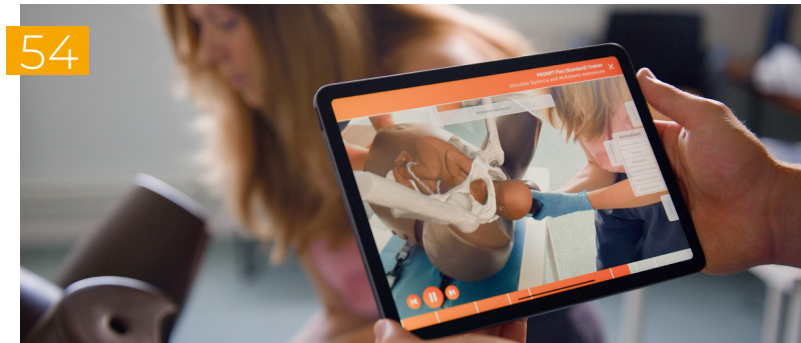
CATHETERIZATION TRAINER



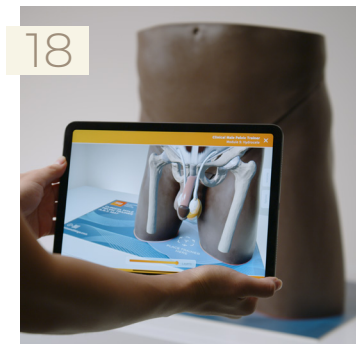
CHEST TRAUMA MANAGEMENT



PROMPT FLEX BIRTHING SIMULATOR



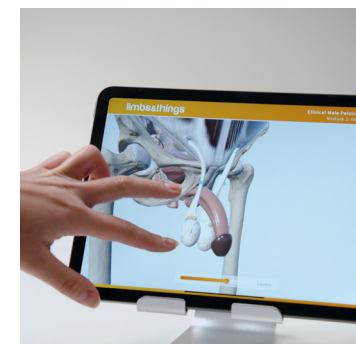
MALE PELVIC TRAINER



LUMBAR PUNCTURE & EPIDURAL



ABDOMINAL EXAMINATION TRAINER



A	ABDOMINAL EXAMINATION TRAINER	10
	ACF PAD - VENIPUNCTURE	35
	ADVANCED CATHETERIZATION TRAINER SET	23
	ADVANCED EPIDURAL & LUMBAR PUNCTURE MODEL	24
	ADVANCED VENIPUNCTURE ARM	40
	AIRWAY MANAGEMENT	
	AIRSIM ADVANCE X	33
	AIRSIM ADVANCE BRONCHI X	33
	AIRSIM BABY X	34
	AIRSIM COMBO X	33
	AIRSIM CHILD COMBO X	34
	AIRSIM DIFFICULT AIRWAY	34
	SMART AIRWAY	32
	SMART AIRWAY CHILD	32
	TRUBABY X	65
	ANAL SPHINCTER REPAIR TRAINER	
	ANNIE ARTERIAL INSUFFICIENCY LEG MODEL	73
	ARTERIAL PUNCTURE WRIST	38
	ASSISTED VAGINAL BIRTH MODULE (AVB) - PROMPT FLEX	57
	AUGMENTED REALITY	6

B	BASIC SURGICAL SKILLS	
	BSS ABSCESS	46
	BSS DAY 1 KIT	46
	BSS DAY 2 KIT	46
	BSS LESION & CYST	46
	DOUBLE LAYER BOWEL	46
	KNOT TYING TRAINER	46
	SUTURE TUTOR PLUS™	47
	BIRTHING SIMULATOR - PROMPT FLEX - STANDARD	54
	BIRTHING SIMULATOR - PROMPT FLEX - ADVANCED	54
	BREAST	
	BREAST EXAMINATION TRAINER - ADVANCED	14
	BREAST EXAMINATION TRAINER - STANDARD	14
	ULTRASOUND GUIDED BREAST BIOPSY PHANTOM	15

C	CARDIOLOGY	
	CARDIOVASCULAR & RESPIRATORY EXAMINATION	8
	CATHETERIZATION	
	ADVANCED TRAINER SET	23
	FEMALE CATHETERIZATION TRAINER	22

C	CATHETERIZATION (CONTINUED)	
	MALE CATHETERIZATION TRAINER	22
	STANDARD CATHETERIZATION TRAINER SET	23
	SUPRAPUBIC CATHETERIZATION INSERTION UNIT	22
	CENTRAL LINE MANAGEMENT	
	TRUCVC	36
	ULTRASOUND CVC INSERTION SIMULATOR MK 3	36
	ULTRASOUND GUIDED PICC TRAINING SIMULATOR	37
	CHEST TRAUMA MANAGEMENT	
	CHEST DRAIN & NEEDLE DECOMPRESSION TRAINER	26
	SMART TRUMAN TRAUMA ADULT	28
	TRUMAN TRAUMA ADULT	28
	CERVICAL DILATATION & EFFACEMENT MODULE (CD&E)	56
	CLEAN BLEED™ MAT	31
	CLINICAL FEMALE PELVIC TRAINER (CFPT) - ADVANCED	13
	CLINICAL FEMALE PELVIC TRAINER (CFPT) - STANDARD	12
	CLINICAL MALE PELVIC TRAINER (CMPT) - ADVANCED	19
	CLINICAL MALE PELVIC TRAINER (CMPT) - STANDARD	18
	COMBINED ULTRASOUND GUIDED THORACENTESIS/ PERICARDIOCENTESIS	29
	CURETTAGE, SNIP & SHAVE EXCISION PAD	50
CUTDOWN PAD	42	

D	DIGITAL EYE EXAMINATION TRAINER	20
	DOUBLE LAYER BOWEL	46

E	EAR EXAMINATION SIMULATOR II	21
	ELBOW FOR JOINT INJECTION	67
	ENHANCED CESAREAN SECTION MODULE (ECSM)	58
	EOSIM™	74
	EPIDURAL & LUMBAR PUNCTURE MODEL (ADVANCED)	24
	EPISIOTOMY TRAINER	63
	EXTENDED ACF PAD - VENIPUNCTURE	35
	EYE EXAMINATION TRAINER	20

F	FEMALE CATHETERIZATION TRAINER	22
	FEMALE EXAMINATION	
	BREAST EXAMINATION TRAINER - ADVANCED	14
	BREAST EXAMINATION TRAINER - STANDARD	14
	CLINICAL FEMALE PELVIC TRAINER (CFPT) - ADV	13
	CLINICAL FEMALE PELVIC TRAINER (CFPT) - STD	12
	ULTRASOUND GUIDED BREAST BIOPSY PHANTOM	15

F	FLS ALL-IN-ONE TRAINER SYSTEM	77
	FLS TRAINER BOX WITH TV CAMERA	76
	FLS TRAINER SYSTEM	77
	FOOT & ANKLE FOR JOINT INJECTION	70
	FREDDIE FISTULA™ SKILLS TRAINER	72

G	GYNECOLOGY	
	SURGICAL FEMALE PELVIC TRAINER (SFPT)	61

H	HAND & WRIST INJECTION TRAINER	71
---	--------------------------------	----

I	INFANT HIP EXAM	64
	INGROWING TOENAIL TRAINER	48
	INJECTION TRAINER	42

J	JOINT INJECTION	
	ELBOW FOR JOINT INJECTION	67
	FOOT & ANKLE FOR JOINT INJECTION	67
	HAND & WRIST INJECTION TRAINER	71
	KNEE ASPIRATION & INJECTION TRAINER	70
	SHOULDER INJECTION TRAINER - PALPATION GUIDED	68
	SHOULDER INJECTION TRAINER - ULTRASOUND GUIDED	69

K	KNEE ASPIRATION & INJECTION TRAINER	70
	KNOT TYING TRAINER	46

L	LABOR PROGRESS SIMULATOR	56
	LAPAROSCOPIC SURGERY	
	EOSIM™	74
	FLS ALL-IN-ONE TRAINER SYSTEM	77
	FLS TRAINER BOX WITH TV CAMERA	76
	FLS TRAINER SYSTEM	77
	SURGICAL FEMALE PELVIC TRAINER (SFPT)	61
	SURGRAC™	75
	LIPOMA PAD	49
	LUMBAR PUNCTURE & EPIDURAL	
	ADVANCED EPIDURAL & LUMBAR PUNCTURE MODEL	24
	LUMBAR PUNCTURE MODEL	24
	ULTRASOUND EPIDURAL & LUMBAR PUNCTURE MODEL	24

M	MALE CATHETERIZATION TRAINER	22
	MALE EXAMINATION	
	CLINICAL MALE PELVIC TRAINER (CMPT) - ADV	19
	CLINICAL MALE PELVIC TRAINER (CMPT) - STD	18

M	MALE EXAMINATION	
	MALE RECTAL EXAMINATION TRAINER - ADVANCED	16
	MALE RECTAL EXAMINATION TRAINER - STANDARD	16
	MATERNAL HEMORRHAGE SIMULATOR	59
	MEDICAL FOOTCARE MODEL	73
	MEDIOLATERAL PERINEAL REPAIR TRAINER	62
	MIDLINE PERINEAL REPAIR TRAINER	62
	MINOR SURGERY	
	CURETTAGE, SNIP & SHAVE EXCISION PAD	50
	INGROWING TOENAIL TRAINER	48
	LIPOMA PAD	49
	PROFESSIONAL SKIN PAD MK 3	49
	SEBACEOUS CYST PAD	50
	WOUND CLOSURE PAD	48

N	NICKIE® MEDICAL TRAINING DOLL	66
---	-------------------------------	----

O	OBSTETRICS & MIDWIFERY	
	ANAL SPHINCTER REPAIR TRAINER	63
	ASSISTED VAGINAL BIRTH MODULE (AVB)	57
	BIRTHING SIMULATOR - PROMPT FLEX - ADVANCED	54
	BIRTHING SIMULATOR - PROMPT FLEX - STANDARD	54
	CERVICAL DILATATION & EFFACEMENT MODULE (CD&E)	56
	ENHANCED CESAREAN SECTION MODULE (ECSM)	58
	EPISIOTOMY TRAINER	63
	MEDIOLATERAL PERINEAL REPAIR TRAINER	62
	MIDLINE PERINEAL REPAIR TRAINER	62
	POSTPARTUM HEMORRHAGE MODULE	59
	POSTPARTUM HEMORRHAGE KIT - PROMPT FLEX	59
	OPHTHALMOLOGY	
	DIGITAL EYE EXAMINATION TRAINER	20
	EYE EXAMINATION SIMULATOR	20
	OTOLOGY	
	EAR EXAMINATION SIMULATOR II	21

P	PEDIATRICS	
	AIRSIM CHILD COMBO X	34
	AIRSIM BABY X	34
	INFANT HIP EXAM	64
	NICKIE® MEDICAL TRAINING DOLL	66
	PEDIATRIC LUMBAR PUNCTURE SIMULATOR II	65
	SMART AIRWAY CHILD	32

P	PEDIATRICS (CONTINUED)	
	TRUBABY X	65
	TRUBABY X LITE	65
	PARACENTESIS TRAINER	43
	PAT PRESSURE ULCER STAGING MODEL	73
	PATIENT CARE	
	PATIENT CARE SIMULATOR "CHERRY"	45
	PATIENT CARE SIMULATOR "YAYE"	44
	TUBE FEEDING SIMULATOR	42
	PELVIC TRAINERS	
	CLINICAL FEMALE PELVIC TRAINERS (CFPT)	12
	CLINICAL MALE PELVIC TRAINERS (CMPT)	18
	PERINEAL REPAIR & EPISIOTOMY	
	ANAL SPHINCTER REPAIR TRAINER	63
	EPISIOTOMY TRAINER	63
	POSTPARTUM HEMORRHAGE MODULE - PROMPT FLEX	59
	POSTPARTUM HEMORRHAGE KIT - PROMPT FLEX	59
	PRESSURE SORES SIMULATOR	72
	PROMPT FLEX BIRTHING SIMULATOR RANGE	52
	PROFESSIONAL SKIN PAD MK3	49

R	(MALE) RECTAL EXAMINATION TRAINER	16
---	-----------------------------------	----

S	SEBACEOUS CYST PAD	50
	SEYMOUR II WOUND CARE MODEL™	72
	SHOULDER INJECTION TRAINER - PALPATION GUIDED	68
	SHOULDER INJECTION TRAINER - ULTRASOUND GUIDED	69
	SMART AIRWAY	32
	SMART AIRWAY CHILD	32
	SMART TRUMAN TRAUMA ADULT	28
	STAN STAGE IV PRESSURE INJURY MODEL™	73
	STANDARD CATHETERIZATION TRAINER SET	23
	STANDARD VENIPUNCTURE ARM	40
	SUPRAPUBIC CATHETERIZATION INSERTION UNIT	22
	SURGICAL FEMALE PELVIC TRAINER (SFPT)	61
	SURGTRAC™	75
	SUTURE TUTOR PLUS™ - HANDS-ON KIT	47

T	THREE VEIN PAD - VENIPUNCTURE	35
	TRUCVC	36
	TRUBABY X	65

T	TRUBABY X LITE	65
	TRUIV BLOCK	37
	TRUJUNCTIONAL	30
	TRUMAN TRAUMA ADULT	28
	TRUTOURNIQUET	30
	TRUWOUND	30
	TUBE FEEDING SIMULATOR	42

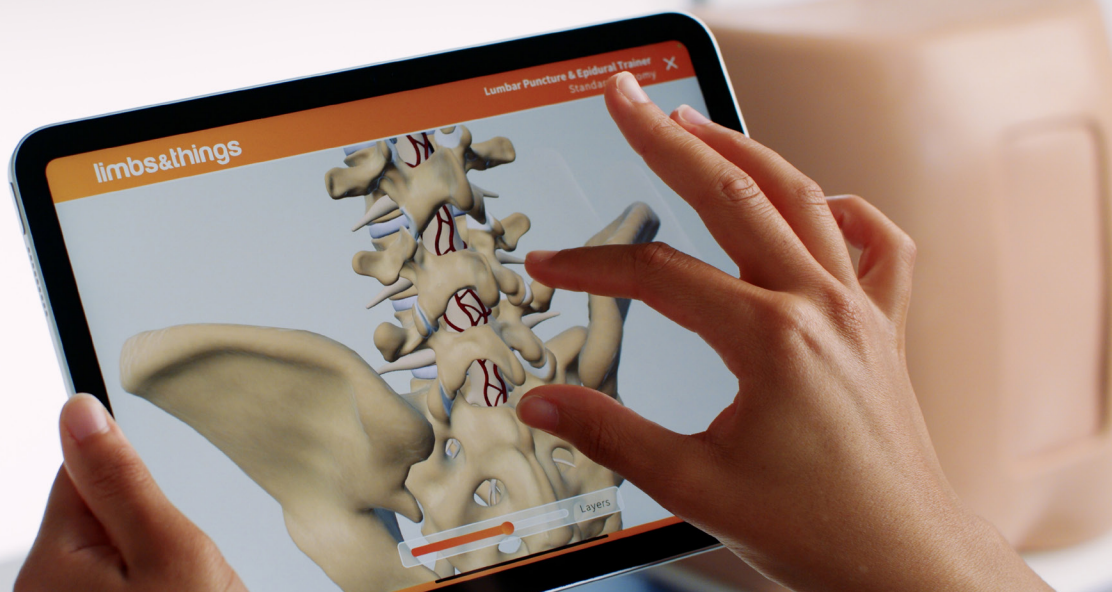
U	ULTRASOUND	
	ARTERIAL PUNCTURE WRIST	38
	CHEST DRAIN & NEEDLE DECOMPRESSION TRAINER	26
	COMBINED ULTRASOUND GUIDED THORACENTESIS/ PERICARDIOCENTESIS	29
	KNEE ASPIRATION & INJECTION TRAINER	70
	PARACENTESIS TRAINER	43
	SHOULDER INJECTION TRAINER - ULTRASOUND GUIDED	69
	SUPRAPUBIC CATHETERIZATION INSERTION UNIT	22
	TRUIV BLOCK	37
	ULTRASOUND EPIDURAL & LUMBAR PUNCTURE MODEL	24
	ULTRASOUND GUIDED BREAST BIOPSY PHANTOM	15
	ULTRASOUND GUIDED PICC TRAINING SIMULATOR	37
	ULTRASOUND VASCULAR ACCESS TRAINER	37

V	VENIPUNCTURE	
	ACF PAD - VENIPUNCTURE	35
	ADVANCED VENIPUNCTURE ARM	40
	CUTDOWN PAD	42
	EXTENDED ACF PAD - VENIPUNCTURE	35
	STANDARD VENIPUNCTURE ARM	40
	THREE VEIN PAD - VENIPUNCTURE	6
	VINNIE VENOUS INSUFFICIENCY LEG MODEL	73

W	WOUND CARE	
	ANNIE ARTERIAL INSUFFICIENCY LEG MODEL	73
	FREDDIE FISTULA™ SKILLS TRAINER	72
	MEDICAL FOOTCARE MODEL	73
	PRESSURE SORES SIMULATOR	72
	SEYMOUR II WOUND CARE MODEL™	72
	STAN STAGE IV PRESSURE INJURY MODEL™	73
	PAT PRESSURE ULCER STAGING MODEL	73
	VINNIE VENOUS INSUFFICIENCY LEG MODEL	73
	WILMA WOUND FOOT™	72
	WOUND CLOSURE PAD	48

Download our Augmented Reality app to start exploring now

Whether you have an AR compatible model or not, you can download the app for free and start discovering the interactive anatomy straight away.



Visit page 6 for more information on Augmented Reality

1

Visit
limbsandthings.com/augmentedreality



Scan to download the app

2

Select one of the app stores
depending on the operating system
of your device



3

Open the app,
head to products and download
the model you're interested in

Download

4

To use without a model,
select **Interactive Anatomy**,
and start exploring

Interactive Anatomy



Watch our video guide on our website for easy instructions
limbsandthings.com/how-to-use-ar



GENERAL INFORMATION

1 ORDER ONLINE

You can place your order online with a credit card. We accept Visa, Mastercard and American Express. Simply proceed through the checkout process providing your credit card information. Please note that charges will be placed on your card at the time the order is placed.

2 PURCHASE ORDER

If you are placing a purchase order you will be able to proceed through the online checkout and specify that you are ordering by purchase order and NOT provide a credit card. Please print the final page of the check-out and mail, or email (customerservice@limbsandthings.com) your order with a copy of an official signed purchase order form. No purchase orders will be shipped without a copy of the purchase order being received.

3 ORDER BY PHONE & PAYMENT LINK

Orders may be initiated by calling our Customer Service line at 912-629-0357. Provide the order details to one of our Associates and at the end of your call they will provide you with a secure payment link via email so that you may complete your purchase remotely and at your convenience. Once your payment is successfully processed a formal order confirmation will be provided. Note: the online shopping cart is a convenient way to organize the products you want to order prior to your call.

PAYMENT TERMS

Payment with order or 30 days from invoice for approved accounts. All orders are subject to applicable sales tax. Exempt customers are required to furnish a valid sales tax exempt certificate upon request to ensure compliance. All orders are subject to Limbs & Things Terms and Conditions of Sale. These are available to view on our website or from our Customer Service Department upon request. We reserve the right to request pre-payment on any order. We accept the following credit & debit cards:



CARE AND HANDLING OF MODELS

Certain of our synthetic soft tissue models contain natural latex. Latex can be discolored by direct or indirect contact with certain metals and prolonged exposure to direct sunlight. To avoid this always use surgical gloves when carrying out a procedure. Always follow the usage and cleaning instructions supplied with the individual model.

PRODUCT CHANGES

As we have a policy of continual product improvement, there may occasionally be variations with items shown in the catalog.

Patents granted

2277826: UK • 5775916: USA • 0990227: Europe, UK, Germany, Spain, France, Italy, Netherlands • 81174/98: Australia • 1023832: Hong Kong • US6336812: USA • 98806331.x: China • 5-512288: Japan • 2 293 585: Canada

Patents applied for:

11-503978: Japan • 0215051.4: UK

© 2026 Limbs & Things Limited. All rights reserved. No part of this publication may be reproduced, stored, transmitted or disseminated, in any form, or by any means, without prior written permission from Limbs & Things.

All information correct at time of going to press.



limbs&
things

USA

00 1-912-629-0357

customerservice@limbsandthings.com

Canada

00 1-912-695-2752

gbsales@limbsandthings.com

UK (Head Office)

00 44 (0)117 311 0500

gbsales@limbsandthings.com

Australia & New Zealand

00 61 3 9708 6511

aus.sales@limbsandthings.com

Sweden

00 72 730 79 00

order.waldemarlarsson@gmail.com

Distributed Regions

A global network of distributors supply our products to over 70 countries

limbsandthings.com

